



Fortnight - SSAA

Pag.

02	Full score combo C instrument
08	Full score combo Bb instrument
14	Full score combo Eb instrument
20	Full score combo 4 extra staves
33	Full score small combo
41	Full score small combo 2 extra staves
56	Full score Vocals (SSAA) Piano Advanced
65	Full score Vocals (SSAA) Piano Intermediate
74	Vocals (SSAA)
82	C instrument
84	Bb instrument
86	Eb instrument
88	Piano Combo
91	Piano Solo Advanced
94	Piano Solo Intermediate
97	Synthesizer
100	Guitar
102	Bass guitar
104	Drumkit
107	Leadsheet (melody, lyrics, chords)
110	Lyrics



SSAA Combo C

Fortnight

- Taylor Swift Feat. Post Malone -

Words and Music by Jack Antonoff, Taylor Swift, Austin Post
Arranged by Frank de Vreeze
Original Key B major

Pop ♩ = 96

A

Soprano 1
and get ___ me. my new aes-thet-

Soprano 2
and get ___ me. my new aes-thet-

Alto 1
I was s'posed to be sent a-way but they ___ for-got to come and get ___ me. I was a func-tion-ing al-co-hol-ic 'till no-bo-dy no-ticed my new aes-thet-

Alto 2
I was s'posed to be sent a-way but they ___ for-got to come and get ___ me. I was a func-tion-ing al-co-hol-ic 'till no-bo-dy no-ticed my new aes-thet-

C Instr.
F^{add2} F^{add2} G^{add2} E^m C/e A^{m7} F^{add2} G C^{maj7}

Piano Combo

Synthesizer
Warm Pad
Bass & Lead

Guitar
El. Guitar muted

Bass Guitar

Drums

Percussion

© www.ChorusOnline.com / 0031 (0) 6 - 41 57 77 56

C

26

S1 Fe - bru - a - ry. ooh tem - po - ra - ry.

S2 Fe - bru - a - ry. ooh tem - po - ra - ry.

A1 All my morn-ings are Mon-days stuck in an end-less Fe - bru - a - ry. I took the mir-a-cle move-on drug, the ef - fects were tem - po - ra - ry. And I love you, it's

A2 All my morn-ings are Mon-days stuck in an end-less Fe - bru - a - ry. I took the mir-a-cle move-on drug, the ef - fects were tem - po - ra - ry. And I love you, it's

C

F⁶ G⁶ G^{7sus4} C/e Am^{7sus4} F⁶ G⁶ G^{7sus4} C Am^{7sus4} F

P.C.

Synth

Gtr.

BG

Dr.

Perc.

D

35

S1 I love you, it's ru-in-ing my life. I touched you And for a fort - night we were Run in - to you

S2 I love you, it's ru-in-ing my life. I touched you And for a fort - night there we were for-e-ver. Run in - to you

A1 ru-in-ing my life, but you are the rea - son. I touched you for on-ly a fort - night. But I touched you And for a fort - night there we were for-e-ver. Run in - to you

A2 ru-in-ing my life, but you are the rea - son. I touched you for on-ly a fort - night. But I touched you And for a fort - night there we were for-e-ver. Run in - to you

C

G E^m C/e A^{m7} F^{add2} G C^{maj7} A^{m7} F^{add2} G

P.C.

Synth

Gtr.

BG

Dr.

Perc.

59

S1 I love you... it's ru-in-ing my life... I touched you... I love you, it's ru-in-ing my life. I

S2 I love you... it's ru-in-ing my life... I touched you... it's ru-in-ing my life. I

A1 ru-in-ing my life... but you are the rea - son. I touched you for on-ly a fort - night. But I touched you I love you, it's ru-in-ing my life...

A2 ru-in-ing my life... but you are the rea - son. I touched you for on-ly a fort - night. But I touched you I love you, it's ru-in-ing my life...

C

G E^m C/e A^{m7} F^{add2} G C^{maj7} A^{m7} F G

P.C.

Synth

Gtr.

BG

Dr.

Perc.

68

S1 love you... it's ru-in-ing my life. I touched you for on-ly a fort - night. I touched you... Thought of call - in' ya, but you won't pick up. 'No-ther fort -

S2 love you... it's ru-in-ing my life... for on-ly a fort - night. I touched you... Thought of call - in' ya, but you won't pick up. 'No-ther fort -

A1 but you are the rea - son. I touched you for on-ly a fort - night. I touched you. Thought of call - in' ya, but you won't pick up. 'No-ther fort -

A2 but you are the rea - son. I touched you for on-ly a fort - night. I touched you. Thought of call - in' ya, but you won't pick up. 'No-ther fort -

C

E^m C/e A^{m7} F^{add2} G C^{maj7} A^{m7} F⁶ G⁶ G^{7sus4}

P.C.

Synth

Gtr.

BG

Dr. Big Fill

Perc.



SSAA Combo Bb

Fortnight

- Taylor Swift Feat. Post Malone -

Words and Music by Jack Antonoff, Taylor Swift, Austin Post
Arranged by Frank de Vreeze
Original Key B major

Pop ♩ = 96

A

Soprano 1
and get ___ me. my new aes-thet-

Soprano 2
and get ___ me. my new aes-thet-

Alto 1
I was s'posed to be sent a-way but they ___ for-got to come and get ___ me. I was a func-tion-ing al-co-hol-ic 'till no-bo-dy no-ticed my new aes-thet-

Alto 2
I was s'posed to be sent a-way but they ___ for-got to come and get ___ me. I was a func-tion-ing al-co-hol-ic 'till no-bo-dy no-ticed my new aes-thet-

Bb Instr.
F^{add2} F^{add2} G^{add2} E^m C/e A^{m7} F^{add2} G Cmaj7

Piano Combo

Synthesizer
Warm Pad
Bass & Lead

Guitar
El. Guitar muted

Bass Guitar

Drums

Percussion

© www.ChorusOnline.com / 0031 (0) 6 - 41 57 77 56

C

26

S1 Fe - bru - a - ry. ooh tem - po - ra - ry.

S2 Fe - bru - a - ry. ooh tem - po - ra - ry.

A1 All my morn - ings are Mon - days stuck in an end - less Fe - bru - a - ry. I took the mir - a - cle move - on drug, the ef - fects were tem - po - ra - ry. And I love you, it's

A2 All my morn - ings are Mon - days stuck in an end - less Fe - bru - a - ry. I took the mir - a - cle move - on drug, the ef - fects were tem - po - ra - ry. And I love you, it's

Bb

P.C. F⁶ G⁶ G^{7sus4} C/e Am^{7sus4} F⁶ G⁶ G^{7sus4} C Am^{7sus4} F

Synth

Gtr.

BG

Dr.

Perc.

D

35

S1 I love you, it's ru - in - ing my life. I touched you And for a fort - night we were Run in - to you

S2 I love you, it's ru - in - ing my life. I touched you And for a fort - night there we were for - e - ver. Run in - to you

A1 ru - in - ing my life, but you are the rea - son. I touched you for on - ly a fort - night. But I touched you And for a fort - night there we were for - e - ver. Run in - to you

A2 ru - in - ing my life, but you are the rea - son. I touched you for on - ly a fort - night. But I touched you And for a fort - night there we were for - e - ver. Run in - to you

Bb

P.C. G E^m C/e Am⁷ F^{add2} G Cmaj⁷ A^{m7} F^{add2} G

Synth

Gtr.

BG

Dr.

Perc.

59

S1 I love you... it's ru-in-ing my life... I touched you... I love you... it's ru-in-ing my life. I

S2 I love you... it's ru-in-ing my life... I touched you... it's ru-in-ing my life. I

A1 ru-in-ing my life... but you are the rea-son. I touched you for on-ly a fort-night. But I touched you I love you... it's ru-in-ing my life...

A2 ru-in-ing my life... but you are the rea-son. I touched you for on-ly a fort-night. But I touched you I love you... it's ru-in-ing my life...

Bb G E^m C/e A^{m7} F^{add2} G C^{maj7} A^{m7} F G

P.C.

Synth

Gtr.

BG

Dr.

Perc.

68

S1 love you... it's ru-in-ing my life. I touched you for on-ly a fort-night. I touched you... Thought of call-in' ya, but you won't pick up. 'No-ther fort-

S2 love you... it's ru-in-ing my life... for on-ly a fort-night. I touched you... Thought of call-in' ya, but you won't pick up. 'No-ther fort-

A1 but you are the rea-son. I touched you for on-ly a fort-night. I touched you. Thought of call-in' ya, but you won't pick up. 'No-ther fort-

A2 but you are the rea-son. I touched you for on-ly a fort-night. I touched you. Thought of call-in' ya, but you won't pick up. 'No-ther fort-

Bb E^m C/e A^{m7} F^{add2} G C^{maj7} A^{m7} F⁶ G⁶ G^{7sus4}

P.C.

Synth

Gtr.

BG

Dr. Big Fill

Perc.



SSAA Combo Eb

Fortnight

- Taylor Swift Feat. Post Malone -

Words and Music by Jack Antonoff, Taylor Swift, Austin Post
Arranged by Frank de Vreeze
Original Key B major

Pop ♩ = 96

A

Soprano 1
and get ___ me. my new aes-thet-

Soprano 2
and get ___ me. my new aes-thet-

Alto 1
I was s'pposed to be sent a-way but they ___ for-got to come and get ___ me. I was a func-tion-ing al-co-hol-ic 'till no-bo-dy no-ticed my new aes-thet-

Alto 2
I was s'pposed to be sent a-way but they ___ for-got to come and get ___ me. I was a func-tion-ing al-co-hol-ic 'till no-bo-dy no-ticed my new aes-thet-

Eb Instr.
F^{add2} F^{add2} G^{add2} E^m C/e A^{m7} F^{add2} G C^{maj7}

Piano Combo

Synthesizer
Warm Pad
Bass & Lead

Guitar
El. Guitar muted

Bass Guitar

Drums

Percussion

© www.ChorusOnline.com / 0031 (0) 6 - 41 57 77 56

C

26

S1 Fe - bru - a - ry. ooh. tem - po - ra - ry.

S2 Fe - bru - a - ry. ooh. tem - po - ra - ry.

A1 All my morn - ings are Mon - days stuck in an end - less Fe - bru - a - ry. I took the mir - a - cle move - on drug, the ef - fects were tem - po - ra - ry. And I love you, it's

A2 All my morn - ings are Mon - days stuck in an end - less Fe - bru - a - ry. I took the mir - a - cle move - on drug, the ef - fects were tem - po - ra - ry. And I love you, it's

Chords: F⁶ G⁶ G^{7sus4} C/e Am^{7sus4} F⁶ G⁶ G^{7sus4} C Am^{7sus4} F

Instrument parts: P.C., Synth, Gtr., BG, Dr., Perc.

D

35

S1 I love you. it's ru - in - ing my life. I touched you. And for a fort - night we were Run in - to you

S2 I love you. it's ru - in - ing my life. I touched you. And for a fort - night there we were for - e - ver. Run in - to you

A1 ru - in - ing my life. but you are the rea - son. I touched you for on - ly a fort - night. But I touched you And for a fort - night there we were for - e - ver. Run in - to you

A2 ru - in - ing my life. but you are the rea - son. I touched you for on - ly a fort - night. But I touched you And for a fort - night there we were for - e - ver. Run in - to you

Chords: G E^m C/e A^{m7} F^{add2} G C^{maj7} A^{m7} F^{add2} G

Instrument parts: P.C., Synth, Gtr., BG, Dr., Perc.

59

S1 I love you... it's ru-in-ing my life... I touched you I love you... it's ru-in-ing my life. I

S2 I love you... it's ru-in-ing my life... I touched you it's ru-in-ing my life. I

A1 ru-in-ing my life... but you are the rea-son. I touched you for on-ly a fort-night. But I touched you I love you... it's ru-in-ing my life...

A2 ru-in-ing my life... but you are the rea-son. I touched you for on-ly a fort-night. But I touched you I love you... it's ru-in-ing my life...

Eb G E^m C/e A^{m7} F^{add2} G C^{maj7} A^{m7} F G

P.C.

Synth

Gtr.

BG

Dr.

Perc.

68

S1 love you... it's ru-in-ing my life. I touched you for on-ly a fort-night. I touched you Thought of call-in' ya, but you won't pick up. 'No-ther fort-

S2 love you... it's ru-in-ing my life... for on-ly a fort-night. I touched you Thought of call-in' ya, but you won't pick up. 'No-ther fort-

A1 but you are the rea-son. I touched you for on-ly a fort-night. I touched you. Thought of call-in' ya, but you won't pick up. 'No-ther fort-

A2 but you are the rea-son. I touched you for on-ly a fort-night. I touched you. Thought of call-in' ya, but you won't pick up. 'No-ther fort-

Eb E^m C/e A^{m7} F^{add2} G C^{maj7} A^{m7} F⁶ G⁶ G^{7sus4}

P.C.

Synth

Gtr.

BG

Dr. Big Fill

Perc.

SSAA 4 extra staves

Fortnight

- Taylor Swift Feat. Post Malone -

*Words and Music by Jack Antonoff, Taylor Swift, Austin Post
Arranged by Frank de Vreeze
Original Key B major*

Pop 1 = 96

A

Sheet music for Soprano 1, Soprano 2, Alto 1, and Alto 2. The music is in 4/4 time and features lyrics in English. The lyrics are: "I was sposed to be sent a way but they for got to come and get me. I was a func-tion-ing al-co-hol-ic till no-bo-dy". The music includes instrumental parts for Piano Combo, Synthesizer (Main Pad, Bass & Lead, El Guitarr mudad), Guitar, Bass Guitar, Drums, and Percussion. Chord progressions are indicated below the piano part: F add2, G add2, Em, C/e, Am7, F add2, G.

B

15

S1 here's to blame. But what a - bout your qui - et trea - son? And for a fort - night we were Run in - to you some - times ask a - bout Now you're in my

S2 here's to blame. But what a - bout your qui - et trea - son? And for a fort - night there we were for - e - ver. Run in - to you some - times ask a - bout the weath - er. Now you're in my

A1 here's to blame. But what a - bout your qui - et trea - son? And for a fort - night there we were for - e - ver. Run in - to you some - times ask a - bout the weath - er. Now you're in my

A2 here's to blame. But what a - bout your qui - et trea - son? And for a fort - night there we were for - e - ver. Run in - to you some - times ask a - bout the weath - er. Now you're in my

1

2

3

4

G Cmaj7 Am7 Fadd2 Gadd2 Em C/e Am7

p.c.

Smith

Chr.

BG

Dr.

Perc.

29

S1 - ry - ooh - tem - po - ra - ry - I

S2 - ry - ooh - tem - po - ra - ry - I

A1 - ry - I took the mir - a - cle move-on drug, the ef - fects were tem - po - ra - ry - And I love you, it's ru - in - ing my - life -

A2 - ry - I took the mir - a - cle move-on drug, the ef - fects were tem - po - ra - ry - And I love you, it's ru - in - ing my - life -

1

2

3

4

Am7sus4 F6 G6 G7sus4 C Am7sus4 F G

P.C.

Smith

Gtr.

BG

Dr.

Perc.

43

S1 Run in - to you some - times ask a - bout ——— Now you're in my back - yard in - to Your wife wat - ers flow - ers, I wan - na kill her. And for a

S2 for - e - ver. Run in - to you some - times ask a - bout ——— the weath - er. Now you're in my back - yard turned in - to good neigh - bors. Your wife wat - ers flow - ers, I wan - na kill her. And for a

A1 for - e - ver. Run in - to you some - times ask a - bout ——— the weath - er. Now you're in my back - yard turned in - to good neigh - bors. Your wife wat - ers flow - ers, I wan - na kill her. And for a

A2 for - e - ver. Run in - to you some - times ask a - bout ——— the weath - er. Now you're in my back - yard turned in - to good neigh - bors. Your wife wat - ers flow - ers, I wan - na kill her. And for a

1

2

3

4

G Em C/e A m7 Fadd2 G Cmaj7 A m7

p.c.

Smith

Chr.

BG

Dr.

Perc.

F

57

S1 Kill him. I love you. It's ru - in - ing my life. I

S2 Kill him. I love you. It's ru - in - ing my life. I

A1 Kill him. And I love you, it's ru - in - ing my life. but you are the rea - son. I touched you for on - ly a fort - night

A2 Kill him. And I love you, it's ru - in - ing my life. but you are the rea - son. I touched you for on - ly a fort - night

1

2

3

4

Am7sus4 F G Em C/e Am7 F+add2 G

P.C.

Smith

Gtr.

BG

Dr.

Perc.

G

71

S1 on - ly a fort - night. I touched you _____ Thought of call - - in' ya, but you won't _____ pick up. No - ther fort - night lost in A - mer - - i - ca. Move to Flor -

S2 on - ly a fort - night. I touched you _____ Thought of call - - in' ya, but you won't _____ pick up. No - ther fort - night lost in A - mer - - i - ca. Move to Flor -

A1 on - ly a fort - night. I touched _____ you, _____ Thought of call - - in' ya, but you won't _____ pick up. No - ther fort - night lost in A - mer - - i - ca. Move to Flor -

A2 on - ly a fort - night. I touched _____ you, _____ Thought of call - - in' ya, but you won't _____ pick up. No - ther fort - night lost in A - mer - - i - ca. Move to Flor -

1
2
3
4

G Cmaj7 Am7 F6 G6 G7sus4 C/e Am7sus4

p.c.

8

Dr. Big Fill

Perc.

85

S1 - - - | - ca. Flor - i - da car you want Flor - i - da till you touch touch you

S2 - - - | - ca. Move to Flor - - - i - da buy the car you want. But it won't start up till you touch touch, you

A1 - - - | - ca. Move to Flor - - - i - da buy the car you want. But it won't start up till you touch touch, you

A2 - - - | - ca. Move to Flor - - - i - da buy the car you want. But it won't start up till you touch touch, you

1

2

3

4

Am7sus4 F6 G6 G7sus4 C Am7sus4 Am

P.C.

Smith

Chr.

BG

Dr.

Perc.



SSAA small Combo

Fortnight

- Taylor Swift Feat. Post Malone -

Words and Music by Jack Antonoff, Taylor Swift, Austin Post
Arranged by Frank de Vreeze
Original Key B major

Pop ♩ = 96

A

Soprano 1

Soprano 2

Alto 1

Alto 2

Piano Combo

Guitar

Bass Guitar

Drums

Percussion

El. Guitar muted

F add2 F add2 G add2 E^m C/e A^{m7} F add2

and get me.

and get me.

I was s'posed to be sent a-way but they for-got to come and get me. I was a func-tion-ing

I was s'posed to be sent a-way but they for-got to come and get me. I was a func-tion-ing

© www.ChorusOnline.com / 0031 (0) 6 - 41 57 77 56

20

S1
some-times ask a-bout _____ Now you're in my back-yard in-to Your wife wat-ers flow-ers, I wan-na kill her.

S2
some-times ask a-bout _____ the weath-er. Now you're in my back-yard turned in-to good neigh-bors. Your wife wat-ers flow-ers, I wan-na kill her.

A1
some-times ask a-bout _____ the weath-er. Now you're in my back-yard turned in-to good neigh-bors. Your wife wat-ers flow-ers, I wan-na kill her.

A2
some-times ask a-bout _____ the weath-er. Now you're in my back-yard turned in-to good neigh-bors. Your wife wat-ers flow-ers, I wan-na kill her.

P.C.
E^m C/e A^{m7} F^{add2} G C^{maj7} A^{m7}

Gtr.

BG

Dr.

Perc.

C

26

S1
Fe-bru-a - ry. ooh _____ tem-po-ra -

S2
Fe-bru-a - ry. ooh _____ tem-po-ra -

A1
All my morn-ings are Mon-days stuck in an end-less Fe-bru-a - ry. _____ I took the mir-a-cle move-on drug, the ef-fects were tem-po-ra -

A2
All my morn-ings are Mon-days stuck in an end-less Fe-bru-a - ry. _____ I took the mir-a-cle move-on drug, the ef-fects were tem-po-ra -

P.C.
F⁶ G⁶ G^{7sus4} C/e A^{m7sus4} F⁶ G⁶ G^{7sus4} C

Gtr.

BG

Dr.

Perc.

E

46

S1
back-yard in-to Your wife wat-ers flow - ers, I wan-na kill her. And for a fort - night we were Run in-to you

S2
back-yard turned in-to good neigh-bors. Your wife wat-ers flow - ers, I wan-na kill her. And for a fort - night there we were to-geth-er Run in-to you

A1
back-yard turned in-to good neigh-bors. Your wife wat-ers flow - ers, I wan-na kill her. And for a fort - night there we were to-geth-er Run in-to you

A2
back-yard turned in-to good neigh-bors. Your wife wat-ers flow - ers, I wan-na kill her. And for a fort - night there we were to-geth-er Run in-to you

P.C.
F^{add2} G C^{maj7} A^{m7} F⁶ G⁶ G^{7sus4}

Gtr.

BG

Dr.

Perc.

52

S1
some-times com - ment on ___ Now you're at the mail - box, in-to My hus-band is cheat - ing. I wan-na kill him.

S2
some-times com - ment on ___ my sweat-er. Now you're at the mail - box, turned in-to good neigh-bors. My hus-band is cheat - ing. I wan-na kill him.

A1
some-times com - ment on ___ my sweat-er. Now you're at the mail - box, turned in-to good neigh-bors. My hus-band is cheat - ing. I wan-na kill him. And I

A2
some-times com - ment on ___ my sweat-er. Now you're at the mail - box, turned in-to good neigh-bors. My hus-band is cheat - ing. I wan-na kill him. And I

P.C.
C/e A^{m7sus4} F⁶ G⁶ G^{7sus4} C A^{m7sus4}

Gtr.

BG

Dr.

Perc.

Fortnight 7

SSAA small Combo

G

71

S1
on - ly a fort - night. I touched you _____ Thought of call - in' ya, but you won't pick up. 'No-ther fort -

S2
on - ly a fort - night. I touched you _____ Thought of call - in' ya, but you won't pick up. 'No-ther fort -

A1
on - ly a fort - night. I touched you. Thought of call - in' ya, but you won't pick up. 'No-ther fort -

A2
on - ly a fort - night. I touched you. Thought of call in' ya, but you won't pick up. 'No-ther fort -

P.C.
G Cmaj7 Am7 F6 G6 G7sus4

Gtr.

BG

Dr.
Big Fill

Perc.

76

S1
- night lost in A-mer - i-ca. Move to Flor - i-da buy the car you want. But it won't start up till you touch touch touch. Thought of call -

S2
- night lost in A-mer - i-ca. Move to Flor - i-da buy the car you want. But it won't start up till you touch touch touch. Thought of call -

A1
- night lost in A-mer - i-ca. Move to Flor - i-da buy the car you want. But it won't start up till you touch touch touch. Thought of call -

A2
- night lost in A-mer - i-ca. Move to Flor - i-da buy the car you want. But it won't start up till you touch touch touch. Thought of call -

P.C.
C/e Am7sus4 F6 G6 G7sus4 C Am7sus4

Gtr.

BG

Dr.

Perc.

SSAA small Combo extra staves

Fortnight

Words and Music by Jack Antonoff, Taylor Swift, Austin Post
 Arranged by Frank de Vreeze
 Original Key B major
 - Taylor Swift Feat. Post Malone -

Pop $\frac{4}{4}$ = 96

A

Sheet music for Soprano 1, Soprano 2, Alto 1, Alto 2, Piano Combo, Guitar, Bass Guitar, Drums, and Percussion. The music includes vocal lines with lyrics and guitar accompaniment with chord diagrams.

Et Guitar muted

Chords: Fadd2, Gadd2, Em, C/e, Am7, Fadd2, G

Lyrics:
 I was s'posed to be sent a way but they got to come and get me.
 I was a func-tion-ing al-co-hol-ic 'till no-bo-dy
 I was s'posed to be sent a way but they got to come and get me.
 I was a func-tion-ing al-co-hol-ic 'till no-bo-dy

B

15

S1 here's to blame. But what a-bout your qui - et trea - son? And for a fort - night we were Run in - to you some - times ask a - bout — Now you're in my

S2 here's to blame. But what a-bout your qui - et trea - son? And for a fort - night there we were - for - e - Ver: Run in - to you some - times ask a - bout — the weath - er: Now you're in my

A1 here's to blame. But what a-bout your qui - et trea - son? And for a fort - night there we were - for - e - Ver: Run in - to you some - times ask a - bout — the weath - er: Now you're in my

A2 here's to blame. But what a-bout your qui - et trea - son? And for a fort - night there we were for - e - Ver: Run in - to you some - times ask a - bout — the weath - er: Now you're in my

1

2

G Cmaj7 Am7 Fadd2 Gadd2 Em C/e Am7

PC:

Gtr:

BG:

Dr:

Perc:

29

S1 - ry - ooh - - - - - ten - po - ra - ry - I

S2 - ry - ooh - - - - - ten - po - ra - ry - I

A1 - ry - - - - - I took the mir - a - cle move - on drug, the ef - facts were ten - po - ra - ry - - - - - And I love you, - - - - - it's ru - in - ing my - - - - - life - - - - -

A2 - ry - - - - - I took the mir - a - cle move - on drug, the ef - facts were ten - po - ra - ry - - - - - And I love you, - - - - - it's ru - in - ing my - - - - - life - - - - -

1

2

Am7sus4 F6 G6 G7sus4 C Am7sus4 F G

Gtr.

BG

Dr.

Perc.

43

S1 Run in - to you some - times ask a - bout _____ Now you're in my back - yard In - to Your wife wat - ers flow - ers, I wan - na kill her. And for a

S2 for - e - ver; Run in - to you some - times ask a - bout _____ the weath - er; Now you're in my back - yard turned in - to good neigh - bors. Your wife wat - ers flow - ers, I wan - na kill her. And for a

A1 for - e - ver; Run in - to you some - times ask a - bout _____ the weath - er; Now you're in my back - yard turned in - to good neigh - bors. Your wife wat - ers flow - ers, I wan - na kill her. And for a

A2 for - e - ver; Run in - to you some - times ask a - bout _____ the weath - er; Now you're in my back - yard turned in - to good neigh - bors. Your wife wat - ers flow - ers, I wan - na kill her. And for a

1

2

G Em C/e Am7 Fadd2 G Cmaj7 Am7

P.C.

Gtr.

BG

Dr.

Perc.

F

57

S1 kill him. I love you. it's ru - in - ing my life. I
 S2 kill him. I love you. it's ru - in - ing my life. I
 A1 kill him. And I love you, it's ru - in - ing my life. but you are the rea - son. I touched you for on - ly a fort - night.
 A2 kill him. And I love you, it's ru - in - ing my life. but you are the rea - son. I touched you for on - ly a fort - night.

Chords: Am7sus4, F, G, Em, C/e, Am7, Fadd2, G

Instruments: Gtr., BG, Dr., Perc.

G

71

S1 on - ly a fort - night I touched you _____ Thought of call - in' ya, but you won't _____ pick up. No - ther fort - night lost in A - mer - i - ca. Move to Flor -

S2 on - ly a fort - night I touched you _____ Thought of call - in' ya, but you won't _____ pick up. No - ther fort - night lost in A - mer - i - ca. Move to Flor -

A1 on - ly a fort - night I touched _____ you _____ Thought of call - in' ya, but you won't _____ pick up. No - ther fort - night lost in A - mer - i - ca. Move to Flor -

A2 on - ly a fort - night I touched _____ you _____ Thought of call - in' ya, but you won't _____ pick up. No - ther fort - night lost in A - mer - i - ca. Move to Flor -

1

2

G Cmaj7 Am7 F6 G6 G7sus4 C/e Am7sus4

P.C. 

Gtr. 

BG 

Dr. 

Perc. 



SSAA Piano Solo Advanced

Fortnight

- Taylor Swift Feat. Post Malone -

*Words and Music by Jack Antonoff, Taylor Swift, Austin Post
Arranged by Frank de Vreeze
Original Key B major*

Pop ♩ = 96

A

Soprano 1

Soprano 2

Alto 1

Alto 2

Piano Solo Advanced

and get ___ me.

and get ___ me.

I was s'posed to be sent a-way but they ___ for-got to come and get ___ me.

I was s'posed to be sent a-way but they ___ for-got to come and get ___ me.

F add2 F add2 G add2 E^m C/e A^{m7}

© www.ChorusOnline.com / 0031 (0) 6 - 41 57 77 56

B

16

S1
what a-bout your qui - et trea - son? And for a fort - night we were Run in - to you some - times ask a - bout

S2
what a-bout your qui - et trea - son? And for a fort - night there we were for - e - ver. Run in - to you some - times ask a - bout

A1
what a-bout your qui - et trea - son? And for a fort - night there we were for - e - ver. Run in - to you some - times ask a - bout

A2
what a-bout your qui - et trea - son? And for a fort - night there we were for - e - ver. Run in - to you some - times ask a - bout

Cmaj7 A m7 F add2 G add2 E m C/e

P.S.A.

21

S1
— Now you're in my back - yard in - to Your wife wat - ers flow - ers, I wan - na kill her.

S2
— the weath - er. Now you're in my back - yard turned in - to good neigh - bors. Your wife wat - ers flow - ers, I wan - na kill her.

A1
— the weath - er. Now you're in my back - yard turned in - to good neigh - bors. Your wife wat - ers flow - ers, I wan - na kill her.

A2
— the weath - er. Now you're in my back - yard turned in - to good neigh - bors. Your wife wat - ers flow - ers, I wan - na kill her.

A m7 F add2 G Cmaj7 A m7

P.S.A.

D

37

S1
ru-in-ing my life. I touched you And for a fort - night we were

S2
ru-in-ing my life. I touched you And for a fort - night there we were

A1
- son. I touched you for on-ly a fort - night. But I touched you And for a fort - night there we were

A2
- son. I touched you for on-ly a fort - night. But I touched you And for a fort - night there we were

A^{m7} F^{add2} G C^{maj7} A^{m7} F^{add2}

P.S.A.

43

S1
Run in - to you some - times ask a - bout Now you're in my back - yard in - to

S2
for - e - ver. Run in - to you some - times ask a - bout the weath - er. Now you're in my back - yard turned in - to

A1
for - e - ver. Run in - to you some - times ask a - bout the weath - er. Now you're in my back - yard turned in - to

A2
for - e - ver. Run in - to you some - times ask a - bout the weath - er. Now you're in my back - yard turned in - to

G E^m C/e A^{m7} F^{add2}

P.S.A.

F

57

S1
kill him. I love you. it's ru-in-ing my life.

S2
kill him. I love you. it's ru-in-ing my life.

A1
kill him. And I love you, it's ru-in-ing my life. but you are the rea-son. I touched you for

A2
kill him. And I love you, it's ru-in-ing my life. but you are the rea-son. I touched you for

P.S.A.
Am7sus4 F G Em C/e Am7 Fadd2

63

S1
I touched you I love you, it's ru-in-ing my life. I love you. it's

S2
I touched you it's ru-in-ing my life. I love you. it's

A1
on-ly a fort - night. But I touched you I love you, it's ru-in-ing my life. but you are the rea-

A2
on-ly a fort - night. But I touched you I love you, it's ru-in-ing my life. but you are the rea-

P.S.A.
G Cmaj7 Am7 F G Em C/e

77

S1
- - i - ca. Move to Flor - i - da buy the car ___ you want. But it won't ___ start up till you touch ___ touch touch. Thought of call -

S2
- - i - ca. Move to Flor - i - da buy the car ___ you want. But it won't ___ start up till you touch ___ touch touch. Thought of call -

A1
- - i - ca. Move to Flor - i - da buy the car ___ you want. But it won't ___ start up till you touch ___ touch touch. Thought of call -

A2
- - i - ca. Move to Flor - i - da buy the car ___ you want. But it won't ___ start up till you touch ___ touch touch. Thought of call -

P.S.A.
Am7sus4 F⁶ G⁶ G⁷sus4 C Am7sus4

82

S1
- in' ya, but you won't ___ pick up. 'No-ther fort - night lost in A-mer - i - ca. Flor - i - da ___

S2
- in' ya, but you won't ___ pick up. 'No-ther fort - night lost in A-mer - i - ca. Move to Flor - i - da buy the car

A1
- in' ya, but you won't ___ pick up. 'No-ther fort - night lost in A-mer - i - ca. Move to Flor - i - da buy the car

A2
- in' ya, but you won't ___ pick up. 'No-ther fort - night lost in A-mer - i - ca. Move to Flor - i - da buy the car

P.S.A.
F⁶ G⁶ G⁷sus4 C/e Am7sus4 F⁶



SSAA Piano Solo Intermediate

Fortnight

- Taylor Swift Feat. Post Malone -

Words and Music by Jack Antonoff, Taylor Swift, Austin Post
Arranged by Frank de Vreeze
Original Key B major

Pop ♩ = 96

A

Soprano 1

Soprano 2

Alto 1

Alto 2

Piano Solo Intermediate

I was s'posed to be sent a-way but they ___ for-got to come and get ___ me.

I was s'posed to be sent a-way but they ___ for-got to come and get ___ me.

F add2 F add2 G add2 E^m C/e A^{m7}

© www.ChorusOnline.com / 0031 (0) 6 - 41 57 77 56

B

16

S1
what a-bout your qui - et trea - son? And for a fort - night we were Run in - to you some - times ask a - bout

S2
what a-bout your qui - et trea - son? And for a fort - night there we were for - e - ver. Run in - to you some - times ask a - bout

A1
what a-bout your qui - et trea - son? And for a fort - night there we were for - e - ver. Run in - to you some - times ask a - bout

A2
what a-bout your qui - et trea - son? And for a fort - night there we were for - e - ver. Run in - to you some - times ask a - bout

Cmaj7 A m7 F add2 G add2 E m C/e

P.S.I.

21

S1
— Now you're in my back - yard in - to Your wife wat - ers flow - ers, I wan - na kill her.

S2
— the weath - er. Now you're in my back - yard turned in - to good neigh - bors. Your wife wat - ers flow - ers, I wan - na kill her.

A1
— the weath - er. Now you're in my back - yard turned in - to good neigh - bors. Your wife wat - ers flow - ers, I wan - na kill her.

A2
— the weath - er. Now you're in my back - yard turned in - to good neigh - bors. Your wife wat - ers flow - ers, I wan - na kill her.

A m7 F add2 G Cmaj7 A m7

P.S.I.

D

37

S1
ru-in-ing my life. I touched you And for a fort - night we were

S2
ru-in-ing my life. I touched you And for a fort - night there we were

A1
- son. I touched you for on-ly a fort - night. But I touched you And for a fort - night there we were

A2
- son. I touched you for on-ly a fort - night. But I touched you And for a fort - night there we were

P.S.I.
A^{m7} F^{add2} G C^{maj7} A^{m7} F^{add2}

43

S1
Run in - to you some - times ask a - bout Now you're in my back - yard in - to

S2
for - e - ver. Run in - to you some - times ask a - bout the weath - er. Now you're in my back - yard turned in - to

A1
for - e - ver. Run in - to you some - times ask a - bout the weath - er. Now you're in my back - yard turned in - to

A2
for - e - ver. Run in - to you some - times ask a - bout the weath - er. Now you're in my back - yard turned in - to

P.S.I.
G E^m C/e A^{m7} F^{add2}

F

57

S1
kill him. I love you. it's ru-in-ing my life.

S2
kill him. I love you. it's ru-in-ing my life.

A1
kill him. And I love you, it's ru-in-ing my life. but you are the rea - son. I touched you for

A2
kill him. And I love you, it's ru-in-ing my life. but you are the rea - son. I touched you for

P.S.I.
Am7sus4 F G Em C/e Am7 Fadd2

63

S1
I touched you I love you, it's ru-in-ing my life. I love you. it's

S2
I touched you it's ru-in-ing my life. I love you. it's

A1
on-ly a fort - night. But I touched you I love you, it's ru-in-ing my life. but you are the rea-

A2
on-ly a fort - night. But I touched you I love you, it's ru-in-ing my life. but you are the rea-

P.S.I.
G Cmaj7 Am7 F G Em C/e

79

S1
— you want. But it won't start up till you touch touch touch. Thought of call - in' ya, but you won't

S2
— you want. But it won't start up till you touch touch touch. Thought of call - in' ya, but you won't

A1
— you want. But it won't start up till you touch touch touch. Thought of call - in' ya, but you won't

A2
— you want. But it won't start up till you touch touch touch. Thought of call - in' ya, but you won't

P.S.I.
G⁶ G^{7sus4} C Am^{7sus4} F⁶

83

S1
— pick up. 'No-ther fort - night lost in A - mer - i - ca. Flor - i - da

S2
— pick up. 'No-ther fort - night lost in A - mer - i - ca. Move to Flor - i - da buy the car

A1
— pick up. 'No-ther fort - night lost in A - mer - i - ca. Move to Flor - i - da buy the car

A2
— pick up. 'No-ther fort - night lost in A - mer - i - ca. Move to Flor - i - da buy the car

P.S.I.
G⁶ G^{7sus4} C/e Am^{7sus4} F⁶



SSAA

Fortnight

- Taylor Swift Feat. Post Malone -

Words and Music by Jack Antonoff, Taylor Swift, Austin Post
Arranged by Frank de Vreeze
Original Key B major

Pop ♩ = 96

A

Soprano 1
Soprano 2
Alto 1
Alto 2

and get
and get
I was s'pposed to be sent a-way but they ___ for-got to come and get
I was s'pposed to be sent a-way but they ___ for-got to come and get

5
S1
S2
A1
A2

— me. my new aes-thet -
— me. my new aes-thet -
— me. I was a func-tion-ing al-co-hol-ic 'till no-bo-dy no-ticed my new aes-thet -
— me. I was a func-tion-ing al-co-hol-ic 'till no-bo-dy no-ticed my new aes-thet -

© www.ChorusOnline.com / 0031 (0) 6 - 41 57 77 56

22

S1
back - yard in - to Your wife wat - ers flow - ers, I wan-na kill her.

S2
back - yard turned in - to good neigh-bors. Your wife wat - ers flow - ers, I wan-na kill her.

A1
back - yard turned in - to good neigh-bors. Your wife wat - ers flow - ers, I wan-na kill her.

A2
back - yard turned in - to good neigh-bors. Your wife wat - ers flow - ers, I wan-na kill her.

C back - yard turned in - to good neigh-bors. Your wife wat - ers flow - ers, I wan-na kill her.

26

S1
Fe - bru - a - ry. ooh _____

S2
Fe - bru - a - ry. ooh _____

A1
All my morn-ings are Mon-days stuck in an end - less Fe - bru - a - ry. _____

A2
All my morn-ings are Mon-days stuck in an end - less Fe - bru - a - ry. _____

30

S1
tem - po - ra - ry.

S2
tem - po - ra - ry.

A1
I took the mir-a-cle move-on drug, the ef - fects were tem - po - ra - ry. _____ And I love you, it's

A2
I took the mir-a-cle move-on drug, the ef - fects were tem - po - ra - ry. _____ And I love you, it's

E

47

S1 Your wife wat - ers flow - ers, I wan - na kill her. And for a fort - night we were

S2 good neigh - bors. Your wife wat - ers flow - ers, I wan - na kill her. And for a fort - night there we were

A1 good neigh - bors. Your wife wat - ers flow - ers, I wan - na kill her. And for a fort - night there we were

A2 good neigh - bors. Your wife wat - ers flow - ers, I wan - na kill her. And for a fort - night there we were

51

S1 Run in - to you some - times com - ment on ___ Now you're at the mail - box, in - to

S2 to - geth - er Run in - to you some - times com - ment on ___ my sweat - er. Now you're at the mail - box, turned in - to

A1 to - geth - er Run in - to you some - times com - ment on ___ my sweat - er. Now you're at the mail - box, turned in - to

A2 to - geth - er Run in - to you some - times com - ment on ___ my sweat - er. Now you're at the mail - box, turned in - to

F

55

S1 My hus - band is cheat - ing. I wan - na kill him.

S2 good neigh - bors. My hus - band is cheat - ing. I wan - na kill him.

A1 good neigh - bors. My hus - band is cheat - ing. I wan - na kill him. And I love you, it's

A2 good neigh - bors. My hus - band is cheat - ing. I wan - na kill him. And I love you, it's

G

73

S1
Thought of call - in' ya, but you won't___ pick up. 'No-ther fort - night lost in A-mer-

S2
Thought of call - in' ya, but you won't___ pick up. 'No-ther fort - night lost in A-mer-

A1
touched you. Thought of call - in' ya, but you won't___ pick up. 'No-ther fort - night lost in A-mer-

A2
touched you. Thought of call - in' ya, but you won't___ pick up. 'No-ther fort - night lost in A-mer-

77

S1
- i - ca. Move to Flor - i - da buy the car___ you want. But it won't___ start up till you touch

S2
- i - ca. Move to Flor - i - da buy the car___ you want. But it won't___ start up till you touch

A1
- i - ca. Move to Flor - i - da buy the car___ you want. But it won't___ start up till you touch

A2
- i - ca. Move to Flor - i - da buy the car___ you want. But it won't___ start up till you touch

81

S1
_ touch touch. Thought of call - in' ya, but you won't___ pick up. 'No-ther fort -

S2
_ touch touch. Thought of call - in' ya, but you won't___ pick up. 'No-ther fort -

A1
_ touch touch. Thought of call - in' ya, but you won't___ pick up. 'No-ther fort -

A2
_ touch touch. Thought of call - in' ya, but you won't___ pick up. 'No-ther fort -



C Instrument

Fortnight

- Taylor Swift Feat. Post Malone

Words and Music by Jack Antonoff, Taylor Swift, Austin Post

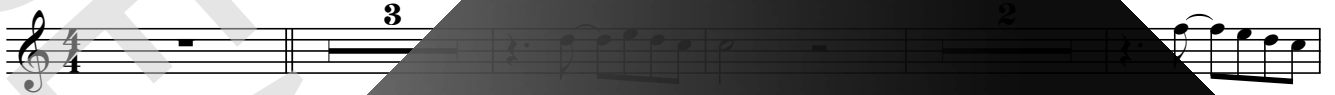
Arranged by Frank de Vreeze

Original Key B major

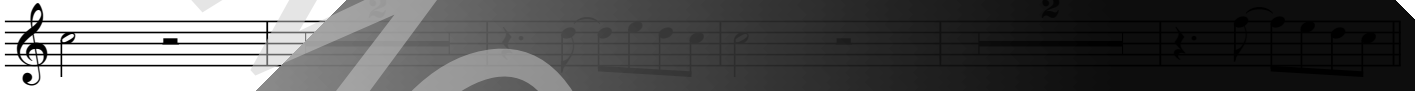
Pop ♩ = 96

C Instr.

A



10



B

18



C

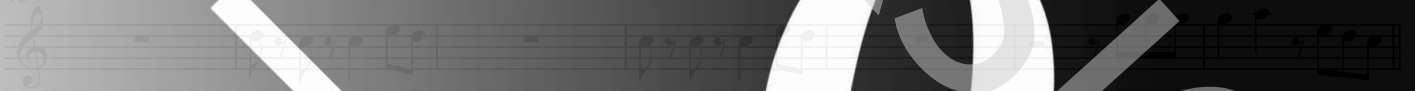
24



34



43



E

50



F

57



63





Bb Instrument

Fortnight

- Taylor Swift Feat. Post Malone

Words and Music by Jack Antonoff, Taylor Swift, Austin Post

Arranged by Frank de Vreeze

Original Key B major

Pop ♩ = 96

Bb Instr.

A

10

B

24

33

41

47

53

59



E♭ Instrument

Fortnight

- Taylor Swift Feat. Post Malone

Words and Music by Jack Antonoff, Taylor Swift, Austin Post

Arranged by Frank de Vreeze

Original Key B major

Pop ♩ = 96

E♭ Instr.

A

10

B

18

24

33

41

47

53

59

60 E^m C/e A^{m7} F^{add2} G C^{maj7}

65 A^{m7} F G E^m C/e A^{m7}

70 F^{add2} G C^{maj7} A^{m7} F⁶

75 G⁶ G^{7sus4} C/e A^{m7sus4} F⁶ G⁶ G^{7sus4}

80 C A^{m7sus4} F⁶ G⁶ G^{7sus4} C F⁶ G⁶ G^{7sus4}

85 A^{m7sus4} F⁶ G⁶ G^{7sus4} C A^{m7sus4} A^m



Piano Solo Advanced

Fortnight

- Taylor Swift Feat. Post Malone

Words and Music by Jack Antonoff, Taylor Swift, Austin Post

Arranged by Frank de Vreeze

Original Key B major

Pop ♩ = 96

A

Fadd2

Fadd2

Gadd2

E^m

C/e

A^{m7}

Musical notation for the first system of the piano solo, measures 1-5. The notation is in 4/4 time and B major. The right hand plays a melody of eighth notes, and the left hand plays a bass line of eighth notes. Chords are indicated above the staff: Fadd2, Fadd2, Gadd2, E^m, C/e, A^{m7}.

6 Fadd2

G

C

A^{m7}

Fadd2

Gadd2

Musical notation for the second system of the piano solo, measures 6-11. The notation is in 4/4 time and B major. The right hand plays a melody of eighth notes, and the left hand plays a bass line of eighth notes. Chords are indicated above the staff: Fadd2, G, C, A^{m7}, Fadd2, Gadd2.

12 E^m

A^{m7}

Fadd2

G

Cmaj7

Musical notation for the third system of the piano solo, measures 12-16. The notation is in 4/4 time and B major. The right hand plays a melody of eighth notes, and the left hand plays a bass line of eighth notes. Chords are indicated above the staff: E^m, A^{m7}, Fadd2, G, Cmaj7.

17 A^{m7}

Fadd2

Gadd2

E^m

C/e

A^{m7}

Musical notation for the fourth system of the piano solo, measures 17-22. The notation is in 4/4 time and B major. The right hand plays a melody of eighth notes, and the left hand plays a bass line of eighth notes. Chords are indicated above the staff: A^{m7}, Fadd2, Gadd2, E^m, C/e, A^{m7}.

23 G

Cmaj7

A^{m7}

F⁶

G⁶

G⁷

Musical notation for the fifth system of the piano solo, measures 23-27. The notation is in 4/4 time and B major. The right hand plays a melody of eighth notes, and the left hand plays a bass line of eighth notes. Chords are indicated above the staff: G, Cmaj7, A^{m7}, F⁶, G⁶, G⁷.



Piano Solo Intermediate

Fortnight

- Taylor Swift Feat. Post Malone

Words and Music by Jack Antonoff, Taylor Swift, Austin Post

Arranged by Frank de Vreeze

Original Key B major

Pop ♩ = 96

Chorus®

SOLO

INTERMEDIATE

ORIGINAL DO NOT COPY

6 Fadd2 G Cmaj7 Am7 Fadd2 Gadd2

12 Em Am7 Fadd2 G Cmaj7

17 Am7 Fadd2 Gadd2 Em C/e Am7

23 G Cmaj7 Am7 F6 G6 G7sus4 C/e

© www.ChorusOnline.com 2024 16-41-57-77-56



Synthesizer

Fortnight

- Taylor Swift Feat. Post Malone

Words and Music by Jack Antonoff, Taylor Swift, Austin Post

Arranged by Frank de Vreeze

Original Key B major

Pop ♩ = 96

A

Warm Pad

6

12

B

17

C

23



Guitar

Fortnight

- Taylor Swift Feat. Post Malone

Words and Music by Jack Antonoff, Taylor Swift, Austin Post

Arranged by Frank de Vreeze

Original Key B major

Pop ♩ = 96

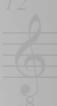
Guitar



6 Fadd2



12 Em

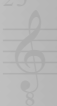


18 B

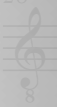
Fadd2 strumming



23 G



28 C/e



34 F





Bass Guitar

Fortnight

- Taylor Swift Feat. Post Malone

Words and Music by Jack Antonoff, Taylor Swift, Austin Post

Arranged by Frank de Vreeze

Original Key B major

Pop ♩ = 96

Bass Guitar

6 Fadd2 G Cmaj7 Am7 Fadd2 Gadd2

12 Em Am7 Fadd2 G Cmaj7 Am7 Fadd2 Gadd2

18 Fadd2 Gadd2 Em C/e Am7 Fadd2 Gadd2

24 Cmaj7 Am7 F6 G Cmaj7 Am7 Fadd2 Gadd2

30 F6 G6 G7sus4 C Am7sus4 F G Cmaj7 Am7

36 Em C/e Am7 Fadd2 G Cmaj7 Am7

Drumkit/Percussion

Hi-Hat closed
Hi-Hat open
Shareclick
Bassdrum (Kick)
Sharedrum
Hi-Hat foot
High Tom
Mid Tom
Low Tom
Floor Tom
Ride Cymbal
Ride Bell/Cup
Crash Cymbal
Splash Cymbal
Triangle mute
Tambourine Beating
Triangle open

Shaker (eggs)
Claves
High Tmbale
Sleigh Bells
Bell Tree
Maracas
Wind Chimes
Handclap
Cowbell
Conga Cabasa
Guro
Woodblock High
Woodblock Low
Timbale Low
Agogo High
Agogo Low



Drums

Fortnight

- Taylor Swift Feat. Post Malone

Words and Music by Jack Antonoff, Taylor Swift, Austin Post

Arranged by Frank de Vreeze

Original Key B major

Pop ♩ = 96

Drums

Musical staff for drums, measures 1-13. The staff is in 4/4 time and contains a series of rhythmic patterns. A box labeled 'A' is positioned above the staff at measure 10.

14

Musical staff for drums, measures 14-20. A box labeled 'B' is positioned above the staff at measure 17.

21

Musical staff for drums, measures 21-27.

28

Musical staff for drums, measures 28-34.

35

Musical staff for drums, measures 35-41. A box labeled 'D' is positioned above the staff at measure 38.

42

Musical staff for drums, measures 42-47. A box labeled 'E' is positioned above the staff at measure 45.

48

Musical staff for drums, measures 48-54.



Leadsheet

Fortnight

- Taylor Swift Feat. Post Malone

Words and Music by Jack Antonoff, Taylor Swift, Austin Post
Arranged by Frank de Vreeze
Original Key B major

Pop ♩ = 96

A

F^{add2} F^{add2} G E^m

I was s'posed to be sent a-way but they for-got to come and get

5 A^{m7} F^{add2} G C^{maj7}

me. I was a func-tion-ing al-co-hol-ic 'till no-bo-dy no-ticed my new aes-

9 A^{m7} F^{add2} G E^m

tic. All of this to say, I hope you're okay, but you are the rea-

13 A^{m7} F^{add2} G E^m

son. And no one here's to blame, just that you're my sui-

17 A^{m7} F^{add2} G E^m

son? And for a fortnight there we were face-er. Run in-to you some-times ask a-bout

21 A^{m7} F^{add2} G E^m

the weath-er. Now you're in my back-yard turned in-to good neigh-bors. Your wife wat-ers flow-ers,

25 A^{m7} F^{add2} G7(13) C/e

kill her. All my morn-ings are Mon-days stuck in an end-ess bru-a-



Lyrics

Fortnight

- Taylor Swift Feat. Post Malone

*Words and Music by Jack Antonoff, Taylor Swift, Austin Post
Arranged by Frank de Vreeze
Original Key B major*

A:
I was supposed to be sent away
but they forgot to come and get me
00:18 I was a functioning alcoholic
'Til nobody noticed my new aesthetic
All of this to say I hope you're okay,
but you're the reason
And no one here's to blame
But what about your quiet reason?

B:
And for a fortnight there,
we were forever
Run into you sometimes,
ask about the weather.
Now you're in my backyard,
turned into good neighbors
Your wife waters flowers,
I wanna kill her

C:
All my mornings are Mondays
stuck in an endless February
I took the miracle move-on drug,
the effects were temporary
And I love you, it's ruining my life
I love you, it's ruining my life
I touched you for only a fortnight
I touched you, but I touched you

D:
And for a fortnight there, we were forever
Run into you sometimes, ask about the weather
Now you're in my backyard,
turned into good neighbors
Your wife waters flowers, I wanna kill her

E:
And for a fortnight there, we were together
Run into you sometimes, comment on my sweater
Now you're at the mailbox, turned into good neighbors
My husband is cheating, I wanna kill him

F:
I love you, it's ruining my life
I love you, it's ruining my life
I touched you for only a fortnight
I touched you, I touched you
I love you, it's ruining my life
I love you, it's ruining my life
I touched you for only a fortnight
I touched you, I touched you

G:
Thought of callin' ya, but you won't pick up
'Nother fortnight lost in America
Move to Florida, buy the car you want
But it won't start up 'til you touch,
touch, touch me
Thought of calling ya,
but you won't pick up
'Nother fortnight lost in America
Move to Florida, buy the car you want
But it won't start up 'til you touch, touch, touch you