



Winter - Chorus-LIGHT

Pag.

02	Full score combo C instrument
14	Full score combo Bb instrument
26	Full score combo Eb instrument
38	Full score combo 4 extra staves
52	Full score small combo
67	Full score small combo 2 extra staves
86	Full score vocals (HIGH – MID - LOW) Piano Solo Advanced
101	Full score vocals (HIGH – MID - LOW) Piano Solo Intermediate
116	Vocals (HIGH – MID - LOW)
126	C instrument
127	Bb instrument
128	Eb instrument
129	Piano Solo Advanced
137	Piano Solo Intermediate
145	Synthesizer
148	Guitar
152	Bassguitar
154	Drumkit
156	Leadsheet (melody, lyrics, chords)
161	Empty paper
165	Lyrics



01 Chorus-LIGHT Combo C

Winter

- Tori Amos -

Words & Music by Tori Amos
Arranged by Don Henken
Original key E flat minor

DEMO

KEEPERS

Intro
Medium Slow ♩ = 80

HIGH

MID

LOW

C Instr.

Piano Adv. *mp*

Synthesizer

Guitar *Ac. Guitar (nylon)
Finger picking*

Bass Guitar

Drum Set

D^m A^{m7} B^b G^m D^m A^{m7} B^b G^m D^m A^{m7}

© www.ChorusOnline.com / 0031 (0) 6 - 41 57 77 56



Winter 3

01 Chorus-LIGHT Combo C

Verse 2

16

H *mp*
I put my hand in my fa - ther's glove. I run off where the drifts get deep - er.

M *mp*
Oo - - - - - fa - ther's glove. I run off where the drifts get deep - er.

L *p*
Oo - - - - - fa - ther's glove. Oo - - - - - oo - - - - -

C
D^m A^{m7} B⁹ G^m D^m A^{m7} B⁹ G^m

PA

Synth *p*
Strings

Gr.

Bass

D. S.

21

H *mf* *mp* *mf*
Sleep - ing beau - ty, it trips me with a frown. I hear a voice: Oo for your - self, 'cause I can't

M *mf* *mp* *mf*
Sleep - ing beau - ty, it trips me with a frown. I hear a voice: Oo for your - self, 'cause I can't

L *mf* *mf*
Oo - - - - - Oo - - - - - "You must learn to stand up for your - self, 'cause I can't

C
D^m A^{m7} B⁹ G^m D^m A^{m7} B⁹ G^m D^m A^{m7}

PA *mf*

Synth *mp*
Trombone

Gr.

Bass

D. S.

36

H
hors - es are still in bed. I tell you that I'll al - ways want you near. You say that things change,

M
hors - es are still in bed. I tell you that I'll al - ways want you near. You say that things change,

L
hors - es are still in bed. I tell you that I'll al - ways want you near. You say that things change,

C
D^m D^{m7} G^m F^{add2} B⁹ D^m C

P.A.
Synth
Gtr.
Bass
D. S.

41

Verse 3

mp
H
— my dear. Boys get dis - cov - ered as win - ter melts,

mp
M
— my dear. Boys get dis - cov - ered as win - ter melts,

mp
L
— my dear. Boys get dis - cov - ered as win - ter melts,

C
B⁹ C D^m A^{m7} B⁹ G^m D^m A^{m7} B⁹ G^m

P.A.
Synth
Gtr.
Bass
D. S.

56 *f* *mp*

H Skat - ing a - round the truth who I am. But I know, Dad, the ice is get - ting thin.

M Skat - ing a - round the truth who I am. But I know, Dad, the ice is get - ting thin.

L Ah Ah

C D^m A^{m7} B[♭] G^m D^m A^{m7} B[♭] G^m

P.A.

Synth *mf*

Gr.

Bass

D. S.

Chorus 2

61 *p* *cresc.*

H When you gon - na make up your mind? When you gon - na love you as much as I do? When you gon - na make up your mind?

M When you gon - na make up your mind? When you gon - na love you as much as I do? When you gon - na make up your mind?

L

C F D^m B[♭] *p* F D^m B[♭] F

P.A.

Synth *p*

Gr. Strumming

Bass

D. S.

76

H

M

L

C

P.A.

Synth

Gr.

Bass

D. S.

Ba ba ba ba. Ba ba ba ba.

ba ba. Ba ba ba ba. Ba, ba ba ba

F G^m D^m B⁷maj7 F G^m D^m B⁷maj7 F G^m

Finger picking

Verse 5

81

H

M

L

C

P.A.

Synth

Gr.

Bass

D. S.

Ba ba ba ba ba. Hair is grey and the fires are burn - ing. So man-y dreams

Ba ba ba ba. Hair is grey and the fires are burn - ing. So man-y dreams

ba. Ba ba ba. Hair is grey and the fires are burn - ing. So man-y dreams

D^m B⁷maj7 F G^m D^m B⁷maj7 F G^m D^m B⁷maj7

f

Winter 11
01 Chorus-LIGHT Combo C

96

H
as I do? When you gon - na make up your mind? 'Cause things are gon - na change so fast. All the white

M
as I do? When you gon - na make up your mind? 'Cause things are gon - na change so fast. All the white

L
'Cause things are gon - na change so fast. All the white

C
D^m B[>] F D^m B[>] F^{add2} B[>]

P.A.
Synth
Gtr.
Bass
D. S.

101

H
hors - es are still in bed. I tell you that I'll al - ways want you near. You say that things change,

M
hors - es are still in bed. I tell you that I'll al - ways want you near. You say that things change,

L
hors - es are still in bed. I tell you that I'll al - ways want you near. You say that things change,

C
mp D^m D^{m7} G^m mf F^{add2} B[>] D^m C

P.A.
Synth
Gtr.
Bass
D. S.



02 Chorus-LIGHT Combo Bb

Winter

- Tori Amos -

Words & Music by Tori Amos
Arranged by Don Henken
Original key E flat minor

DEMO

KEEPERS

Intro

Medium Slow ♩ = 80

Musical score for Intro, featuring staves for HIGH, MID, LOW, Bb Instr., Piano Adv., Synthesizer, Guitar, Bass Guitar, and Drum Set. The score includes chord progressions (D^m, A^{m7}, B^b, G^m) and performance instructions like *mp* and *Ac. Guitar (nylon) Finger picking*.

© www.ChorusOnline.com / 0031 (0) 6 - 41 57 77 56

Winter 3

02 Chorus-LIGHT Combo Bb

Verse 2

16

H I put my hand in my fa - ther's glove. I run off where the drifts get deep - er.

M Oo - - - - - fa - ther's glove. I run off where the drifts get deep - er.

L Oo - - - - - fa - ther's glove. Oo - - - - - oo - - - - -

Bb

P.A. D^m A^{m7} B⁹ G^m D^m A^{m7} B⁹ G^m

Synth

Strings

Gr.

Bass

D. S.

21

H Sleep - ing beau - ty, it trips me with a frown. I hear a voice: Oo for your - self, 'cause I can't

M Sleep - ing beau - ty, it trips me with a frown. I hear a voice: Oo - - - - - for your - self, 'cause I can't

L Oo - - - - - Oo - - - - - "You must learn to stand up for your - self, 'cause I can't

Bb

P.A. D^m A^{m7} B⁹ G^m D^m A^{m7} B⁹ G^m D^m A^{m7}

Synth

Trombone

Gr.

Bass

D. S.

Winter 5
02 Chorus-LIGHT Combo Bb

36

H
hors - es are still in bed. I tell you that I'll al - ways want you near. You say that things change,

M
hors - es are still in bed. I tell you that I'll al - ways want you near. You say that things change,

L
hors - es are still in bed. I tell you that I'll al - ways want you near. You say that things change,

Bb

P.A.
D^m D^{m7} G^m F^{add2} B⁹ D^m C

Synth

Gr.

Bass

D. S.

41

H
— my dear. Boys get dis - cov - ered as win - ter melts,

M
— my dear. Boys get dis - cov - ered as win - ter melts,

L
— my dear. Boys get dis - cov - ered as win - ter melts,

Bb

P.A.
B⁹ C D^m A^{m7} B⁹ G^m D^m A^{m7} B⁹ G^m

Synth

Gr.

Bass

D. S.

Verse 3

mp

mp

mp

56 *f* *mp*

H Skat - ing a - round the truth who I am. But I know, Dad, the ice is get - ting thin.

M Skat - ing a - round the truth who I am. But I know, Dad, the ice is get - ting thin.

L Ah Ah

Bb

P.A. *f* *mp*

Synth *mf*

Gtr.

Bass

D. S.

D^m A^{m7} B[♭] G^m D^m A^{m7} B[♭] G^m

Chorus 2

61 *p* *cresc.*

H When you gon - na make up your mind? When you gon - na love you as much as I do? When you gon - na make up your mind?

M When you gon - na make up your mind? When you gon - na love you as much as I do? When you gon - na make up your mind?

L

Bb

P.A. *p* *cresc.*

Synth *8va* *p*

Gtr. Strumming

Bass

D. S.

F D^m B[♭] *p* F D^m B[♭] F

76

H

M

L

Bb

P.A.

Synth

Gr.

Bass

D. S.

Ba ba ba ba. Ba ba ba ba.

ba ba. Ba ba ba ba. Ba, ba ba ba

F G^m D^m B⁷maj7 F G^m D^m B⁷maj7 F G^m

Finger picking

Verse 5

81

H

M

L

Bb

P.A.

Synth

Gr.

Bass

D. S.

Ba ba ba ba ba. Hair is grey and the fires are burn - ing. So man-y dreams

Ba ba ba ba. Hair is grey and the fires are burn - ing. So man-y dreams

ba. Ba ba ba. Hair is grey and the fires are burn - ing. So man-y dreams

D^m B⁷maj7 F G^m *f* D^m B⁷maj7 F G^m D^m B⁷maj7

Winter 11
02 Chorus-LIGHT Combo Bb

96

H
as I do? When you gon - na make up your mind? 'Cause things are gon - na change so fast. All the white

M
as I do? When you gon - na make up your mind? 'Cause things are gon - na change so fast. All the white

L
'Cause things are gon - na change so fast. All the white

Bb
D^m B⁷ F D^m B⁷ f^{add2} B⁷

P.A.
Finger picking

Synth

Gr.
Finger picking

Bass

D. S.

101

H
hors - es are still in bed. I tell you that I'll al - ways want you near. You say that things change,

M
hors - es are still in bed. I tell you that I'll al - ways want you near. You say that things change,

L
hors - es are still in bed. I tell you that I'll al - ways want you near. You say that things change,

Bb
mp D^m D^{m7} G^m mf^{add2} B⁷ D^m C

P.A.
Finger picking

Synth

Gr.
Finger picking

Bass

D. S.



Winter

- Tori Amos -

Words & Music by Tori Amos
Arranged by Don Henken
Original key E flat minor

DEMO

KEYS

Intro

Medium Slow ♩ = 80

MUSIC STAFFS:

- HIGH
- MID
- LOW
- Eb Instr.
- Piano Adv. (mp)
- Synthesizer
- Guitar (Ac. Guitar (nylon) Finger picking)
- Bass Guitar
- Drum Set

CHORDS: D^m, A^{m7}, B^b, G^m, D^m, A^{m7}, B^b, G^m, D^m, A^{m7}

© www.ChorusOnline.com / 0031 (0) 6 - 41 57 77 56

Winter 3
03 Chorus-LIGHT Combo Eb

Verse 2

16

H I put my hand in my fa - ther's glove. I run off where the drifts get deep - er.

M Oo fa - ther's glove. I run off where the drifts get deep - er.

L Oo fa - ther's glove. Oo oo

Eb

P.A. D^m A^{m7} B^b G^m D^m A^{m7} B^b G^m

Synth

Strings

Gtr.

Bass

D. S.

21

H Sleep-ing beau - ty, it trips me with a frown. I hear a voice: Oo for your - self, 'cause I can't

M Sleep-ing beau - ty, it trips me with a frown. I hear a voice: Oo for your - self, 'cause I can't

L Oo "You must learn to stand up for your - self, 'cause I can't

Eb

P.A. D^m A^{m7} B^b G^m D^m A^{m7} B^b G^m D^m A^{m7}

Synth

Trombone

Gtr.

Bass

D. S.

36

H
hors - es are still in bed. I tell you that I'll al - ways want you near. You say that things change,

M
hors - es are still in bed. I tell you that I'll al - ways want you near. You say that things change,

L
hors - es are still in bed. I tell you that I'll al - ways want you near. You say that things change,

Eb

P.A.
D^m D^{m7} G^m F^{add2} B^b D^m C

Synth

Gr.

Bass

D. S.

41

H
— my dear. Boys get dis - cov - ered as win - ter melts,

M
— my dear. Boys get dis - cov - ered as win - ter melts,

L
— my dear. Boys get dis - cov - ered as win - ter melts,

Eb

P.A.
B^b C D^m A^{m7} B^b G^m D^m A^{m7} B^b G^m

Synth

Gr.

Bass

D. S.

Verse 3
mp

56 *f* *mp*

H Skat - ing a - round the truth who I am. But I know, Dad, the ice is get - ting thin.

M Skat - ing a - round the truth who I am. But I know, Dad, the ice is get - ting thin.

L Ah Ah

Eb

P.A. *f* *mp*

Synth *mf*

Gr.

Bass

D. S.

D^m A^{m7} B^b G^m D^m A^{m7} B^b G^m

Chorus 2

61 *p* *cresc.*

H When you gon - na make up your mind? When you gon - na love you as much as I do? When you gon - na make up your mind?

M When you gon - na make up your mind? When you gon - na love you as much as I do? When you gon - na make up your mind?

L

Eb

P.A. *p* *cresc.*

Synth *p*

Gr. Strumming

Bass

D. S.

F D^m B^b *p* F D^m B^b F

76

H

M

L

Eb

P.A.

Synth

Gr.

Bass

D. S.

Ba ba ba ba. Ba ba ba ba.

ba ba. Ba ba ba ba. Ba, ba ba ba

F G^m D^m B⁷maj7 F G^m D^m B⁷maj7 F G^m

Finger picking

Verse 5

81

H

M

L

Eb

P.A.

Synth

Gr.

Bass

D. S.

Ba ba ba ba ba. Hair is grey and the fires are burn - ing. So man-y dreams

Ba ba ba ba. Hair is grey and the fires are burn - ing. So man-y dreams

ba. Ba ba ba. Hair is grey and the fires are burn - ing. So man-y dreams

D^m B⁷maj7 F G^m f D^m B⁷maj7 F G^m D^m B⁷maj7

Winter 11
03 Chorus-LIGHT Combo Eb

96

H
as I do? When you gon - na make up your mind? 'Cause things are gon - na change so fast. All the white

M
as I do? When you gon - na make up your mind? 'Cause things are gon - na change so fast. All the white

L
'Cause things are gon - na change so fast. All the white

Eb
D^m B^b F D^m B^b *f* F^{add2} B^b

P.A.
f

Synth
(8^{va})

Gr.
Finger picking

Bass

D. S.

101

H
hors - es are still in bed. I tell you that I'll al - ways want you near. You say that things change,

M
hors - es are still in bed. I tell you that I'll al - ways want you near. You say that things change,

L
hors - es are still in bed. I tell you that I'll al - ways want you near. You say that things change,

Eb
mp D^m D^{m7} G^m *mf* F^{add2} B^b D^m C

P.A.
mf

Synth
(8^{va})

Gr.
Finger picking

Bass

D. S.

04 Chorus-LIGHT 4 extra staves

Winter

- Tori Amos -

Words & Music by Tori Amos
Arranged by Don Henken
Original key E flat minor

Intro

Medium Slow $\text{♩} = 80$

HIGH

MID

LOW

1

2

3

4

Piano Adv. *mp*

D^m A^{m7} B^b G^m D^m A^{m7} B^b G^m D^m A^{m7} B^b G^m D^m A^{m7} B^b G^m D^m A^{m7} B^b G^m D^m A^{m7} B^b G^m

Synthesizer

A.c. Guitar (rhythm)
Finger picking

Guitar

Bass Guitar

Drum Set

Winter 5
04 Chorus-LIGHT 4 extra staves

33

H *mf* Cause things are gon - na change — so fast. — All the white hors - es are still in bed. — I tell you that I'll al - ways — want you near. — You say that things — change. —

M *mf* Cause things are gon - na change — so fast. — All the white hors - es are still in bed. — I tell you that I'll al - ways — want you near. — You say that things — change. —

L *mf* Cause things are gon - na change — so fast. — All the white hors - es are still in bed. — I tell you that I'll al - ways — want you near. — You say that things — change. —

1
2
3
4

Dm B \flat F add2 B \flat Dm Dm7 Gm F add2 B \flat Dm C

Synth *mp* *mf* Strings

Gtr

Bass

D. S.

Winter 7
04 Chorus-LIGHT 4 extra staves

Verse 4

49

H here still wait - ing, With - er - ing where some snow - man was. — *mf* Mir - ror, mir - ror, where's the crys - tal pal - ace? But I on - ly can see my - self. — *f* Skat - ing a - round the

M here still wait - ing, With - er - ing where some snow - man was. — *mf* Mir - ror, mir - ror, where's the crys - tal pal - ace? But I on - ly can see my - self. — *f* Skat - ing a - round the

L here still wait - ing, With - er - ing where some snow - man was. — *mf* Mir - ror, mir - ror, where's the crys - tal pal - ace? But I on - ly can see my - self. — *f* Ah —

1
2
3
4

B \flat G m D m A m 7 B \flat G m D m A m 7 B \flat G m D m A m 7 B \flat G m D m A m 7 B \flat G m D m A m 7

Synth *p* *mp* *mf*

Drum *mf*

Bass

D. S.

Winter 9
04 Chorus-LIGHT 4 extra staves

65

cresc. *f* When you gon-na make up your mind? — Cause things are gon-na change — so fast! — All the white hors-es are still in bed. — I tell you that I'll al-ways — want you near — You say that things

cresc. *f* When you gon-na make up your mind? — Cause things are gon-na change — so fast! — All the white hors-es are still in bed. — I tell you that I'll al-ways — want you near — You say that things

mf *cresc.* *f* When you gon-na make up your mind? — Cause things are gon-na change — so fast! — All the white hors-es are still in bed. — I tell you that I'll al-ways — want you near — You say that things

mf *cresc.* *f* When you gon-na make up your mind? — Cause things are gon-na change — so fast! — All the white hors-es are still in bed. — I tell you that I'll al-ways — want you near — You say that things

1
2
3
4

F D^m B^b F add2 B^b D^m D^m7 G^m F add2 B^b

Synth *mp* *mf* *over*

Gtr. Finger picking

Bass

D. S.

Winter 13
04 Chorus-LIGHT 4 extra staves

07

H *f* When you gon - na make up your mind? — Cause things are gon - na change — so fast. — All the white hors - es are still in bed — I tell you that I'll al - ways — want you near — You say that things

M *f* When you gon - na make up your mind? — Cause things are gon - na change — so fast. — All the white hors - es are still in bed — I tell you that I'll al - ways — want you near — You say that things

L *f* Cause things are gon - na change — so fast. — All the white hors - es are still in bed — I tell you that I'll al - ways — want you near — You say that things

1
2
3
4

F D^m B^b F^{add2} B^b D^m D^{m7} G^m F^{add2} B^b

Synth (8va) —

Gtr. Finger picking

Bass

D. S.



05 Chorus-LIGHT small Combo

Winter

- Tori Amos -

Words & Music by Tori Amos
Arranged by Don Henken
Original key E flat minor

Intro

Medium Slow ♩ = 80

HIGH

MID

LOW

Piano Adv. *mp*

Ac. Guitar (nylon)
Finger picking

Guitar

Bass Guitar

Drum Set

Chords: D^m, A^{m7}, B^b, G^m, D^m, A^{m7}, B^b, G^m

© www.ChorusOnline.com / 0031 (0) 6 - 41 57 77 56

Winter 3
05 Chorus-LIGHT small Combo

13

H
new boots on. I get a lit - tle warm in my heart when I think of win - ter. I put my hand in my

M
p
Oo

L
p
Oo

P.A.
B \flat G m D m A m 7 B \flat G m D m A m 7

Gtr.

Bass

D. S.

Verse 2

17

H
fa - ther's glove. I run off where the drifts get deep - er.

M
mp
fa - ther's glove. I run off where the drifts get deep - er.

L
p
fa - ther's glove. Oo

P.A.
B \flat G m D m A m 7 B \flat G m

Gtr.

Bass

D. S.

Winter 5
05 Chorus-LIGHT small Combo

29

H
When you gon - na love you as much ___ as I ___ do? When you gon - na make up your mind?

M
mp When you gon - na love you as much ___ as I ___ do? *cresc.* When you gon - na make up your mind?

L
8

P.A.
D^m B^b F D^m B^b F *cresc.*

Gtr.

Bass

D. S.

33

H
___ 'Cause things are gon - na change ___ so fast. ___ All the white hors - es are still in bed.

M
mf ___ 'Cause things are gon - na change so fast. ___ All the white hors - es are still in bed.

L
cresc. *mf* ___ 'Cause things are gon - na change so fast. ___ All the white hors - es are still in bed.

P.A.
D^m B^b F^{add2} B^b D^m D^{m7}

Gtr.

Bass

D. S.

45

H
as win - ter ___ melts, flow - ers com - pet - ing for the sun. ___ Years go by and I'm

M
as win - ter melts, flow - ers com - pet - ing for the sun. ___ Years go by and I'm

L
as win - ter melts, flow - ers com - pet - ing for the sun. ___ Years go by and I'm

P.A
B \flat G m D m A m7 B \flat G m D m A m7

Gtr.

Bass

D. S.

Verse 4

49

H
here still wait - ing, With - er - ing where some snow - man was. ___ Mir - ror, mir - ror, where's the

M
here still wait - ing, With - er - ing where some snow - man was. ___ Mir - ror, mir - ror, where's the

L
here still wait - ing, With - er - ing where some snow - man was. ___ Mir - ror, mir - ror, where's the

P.A
B \flat G m D m A m7 B \flat G m D m A m7

Gtr.

Bass

D. S.

Chorus 2

61 *p*

H
When you gon - na make up your mind? ___ When you gon - na love you as much ___ as I ___ do?

M
When you gon - na make up your mind? ___ When you gon - na love you as much ___ as I ___ do?

L
8

P.A.
p
F D^m B^b F D^m B^b

Gtr.
Strumming

Bass

D. S.

65 *cresc.* *f*

H
When you gon - na make up your mind? ___ 'Cause things are gon - na change ___ so fast. ___ All the white

M
cresc. *f*
When you gon - na make up your mind? ___ 'Cause things are gon - na change so fast. ___ All the white

L
mf *cresc.* *f*
'Cause things are gon - na change so fast. ___ All the white

P.A.
F D^m B^b F add2 B^b

Gtr.
Finger picking

Bass

D. S.

77

H

M

L

P.A

Gtr.

Bass

D. S.

Ba ba ba ba. Ba ba ba ba.

Ba ba ba ba. Ba, ba ba ba

D^m B[♭]maj7 F G^m D^m B[♭]maj7 F G^m

Verse 5

81

H

M

L

P.A

Gtr.

Bass

D. S.

Ba ba ba ba ba. *f* Hair is grey and the fires are burn - ing.

Ba ba ba ba. *f* Hair is grey and the fires are burn - ing.

ba. Ba ba ba. *f* Hair is grey and the fires are burn - ing.

D^m B[♭]maj7 F G^m D^m B[♭]maj7 F G^m

Chorus 3

93 *p*

H
When you gon - na make up your mind? ___ When you gon - na love you as much ___ as I ___ do?

M
p
When you gon - na love you as much ___ as I ___ do?

L

P.A.
F D^m B^b F D^m B^b

Gr. *Strumming*

Bass

D. S.

97 *f* *mf*

H
When you gon - na make up your mind? ___ 'Cause things are gon - na change ___ so fast. ___ All the white

M
f *mf*
When you gon - na make up your mind? ___ 'Cause things are gon - na change so fast. ___ All the white

L
f *mf*
'Cause things are gon - na change so fast. ___ All the white

P.A.
F D^m B^b F add2 B^b

Gr. *Finger picking*

Bass

D. S.

Winter 15
05 Chorus-LIGHT small Combo

109 *mp*

H
All the white hors - es. Ah.

M
All the white hors - es. Ah.

L
All the white hors - es. Ah.

P.A.
D^m A^{m7} B^b G^m D^m A^{m7}

Gtr.

Bass

D. S.

112 *p* *rit.*

H
Mmm.

M
Mmm.

L
Mmm.

P.A.
B^b G^m D^m A^{m7} B^b

Gtr.

Bass

D. S.

06 Chorus-LIGHT small Combo extra staves

Winter

- Tori Amos -

Words & Music by Tori Amos
Arranged by Don Henken
Original key E flat minor

Intro

Medium Slow $\text{♩} = 80$

HIGH

MID

LOW

1

2

Piano Adv.

Guitar

Bass Guitar

Drum Set

D^m A^{m7} B^b G^m D^m A^{m7} B^b G^m D^m A^{m7} B^b G^m D^m A^{m7} B^b G^m

Ac. Guitar (nylon)
Finger picking

mp

Winter 3
06 Chorus-LIGHT small Combo extra staves

13

H new boots on. — I get a lit-tle warm in my heart when I think of win-ter. I put my hand in my fa-ther's glove.

M *d* 00 — *d* 00 — *d* 00 — *d* 00 — fa-ther's glove.

L *d* 00 — *d* 00 — *d* 00 — *d* 00 — fa-ther's glove.

1

2

PA *B_b* *Gm* *Dm* *A^m7* *B_b* *Gm* *Dm* *A^m7* *B_b* *Gm*

Gtr. 8

Bass

D. S.

Chorus 1

25 *mf* H for your-self, 'cause I can't al-ways be — a-round." *pp* Whisper *mp* He says: When you gon-na make up your mind? — *mp* When you gon-na love you as much

mf M for your-self, 'cause I can't al-ways be — a-round." *pp* Whisper He says: When you gon-na love you as much

mf L for your-self, 'cause I can't al-ways be — a-round." He says: When you gon-na love you as much

1 2

D^m A^{m7} B^b G^m F D^m B^b F

PA

Gtr. 8

Bass

D.S.

37

H
I tell you that I'll al - ways want you near. You say that things change. my dear.

M
I tell you that I'll al - ways want you near. You say that things change. my dear.

L
I tell you that I'll al - ways want you near. You say that things change. my dear.

1
2

PA
Gm F add2 B \flat D \flat m C B \flat C D \flat m A \flat m7
mp

Gtr.
8

Bass

D. S.

Winter 9
06 Chorus-LIGHT small Combo extra staves

Verse 4

49

H *mf* here still wait - ing, With - er - ing where some snow - man was. — Mir - ror, mir - ror, where's the crys - tal pal - ace? But I on - ly can

M *mf* here still wait - ing, With - er - ing where some snow - man was. — Mir - ror, mir - ror, where's the crys - tal pal - ace? But I on - ly can

L *mf* here still wait - ing, With - er - ing where some snow - man was. — Mir - ror, mir - ror, where's the crys - tal pal - ace? But I on - ly can

1

2

PA *mf* here still wait - ing, With - er - ing where some snow - man was. — Mir - ror, mir - ror, where's the crys - tal pal - ace? But I on - ly can

B \flat G \flat m D \flat m A \flat m7 B \flat G \flat m D \flat m A \flat m7 B \flat G \flat m D \flat m A \flat m7

Gtr. 8

Bass 8

D. S.

Chorus 2

61 *p* When you gon-na make up your mind? — When you gon-na love you as much — as I — do? When you gon-na make up your mind? — 'Cause things are gon-na

p When you gon-na make up your mind? — When you gon-na love you as much — as I — do? When you gon-na make up your mind? — 'Cause things are gon-na

mf *cresc.* 'Cause things are gon-na

cresc. *cresc.* *cresc.*

1
2

PA *p* *F* *D^m* *B^b* *F* *D^m* *B^b* *F* *D^m* *B^b* *F* *D^m* *B^b*

Gtr. *Strumming*

Bass

D. S.

Interlude

73 *crvc.* *f*

H — change, — *f* my dear —

M — change, — *f* my dear —

L — change, — *f* my dear — Ba ba ba ba Ba ba ba.

1

2

Dm C B_b C Dm B^hmaj7 F G^m Dm B^hmaj7 F G^m

PA *f*

Gtr. 8 Finger picking

Bass

D. S.

85

H So man-y dreams on the shelf — You say I want-ed you to be prouder me. I al - ways want-ed

M So man-y dreams on the shelf — You say I want-ed you to be prouder me. I al - ways want-ed

L So man-y dreams on the shelf — You say I want-ed you to be prouder me. I al - ways want-ed

1

2

PA

Dm B \flat ma \flat 7 F Gm Dm B \flat ma \flat 7 F Gm Dm B \flat ma \flat 7

Gtr. 8

Bass

D. S.

Winter 17
06 Chorus-LIGHT small Combo extra staves

96

H
as I do? When you gon - na make up your mind? Cause things are gon - na change so fast. All the white hors - es are still in bed.

M
as I do? When you gon - na make up your mind? Cause things are gon - na change so fast. All the white hors - es are still in bed.

L
Cause things are gon - na change so fast. All the white hors - es are still in bed.

1
2

PA
Dm Bb F Dm Bb F add2 Bb Dm Dm7

Gtr.
8
Finger picking

Bass
8

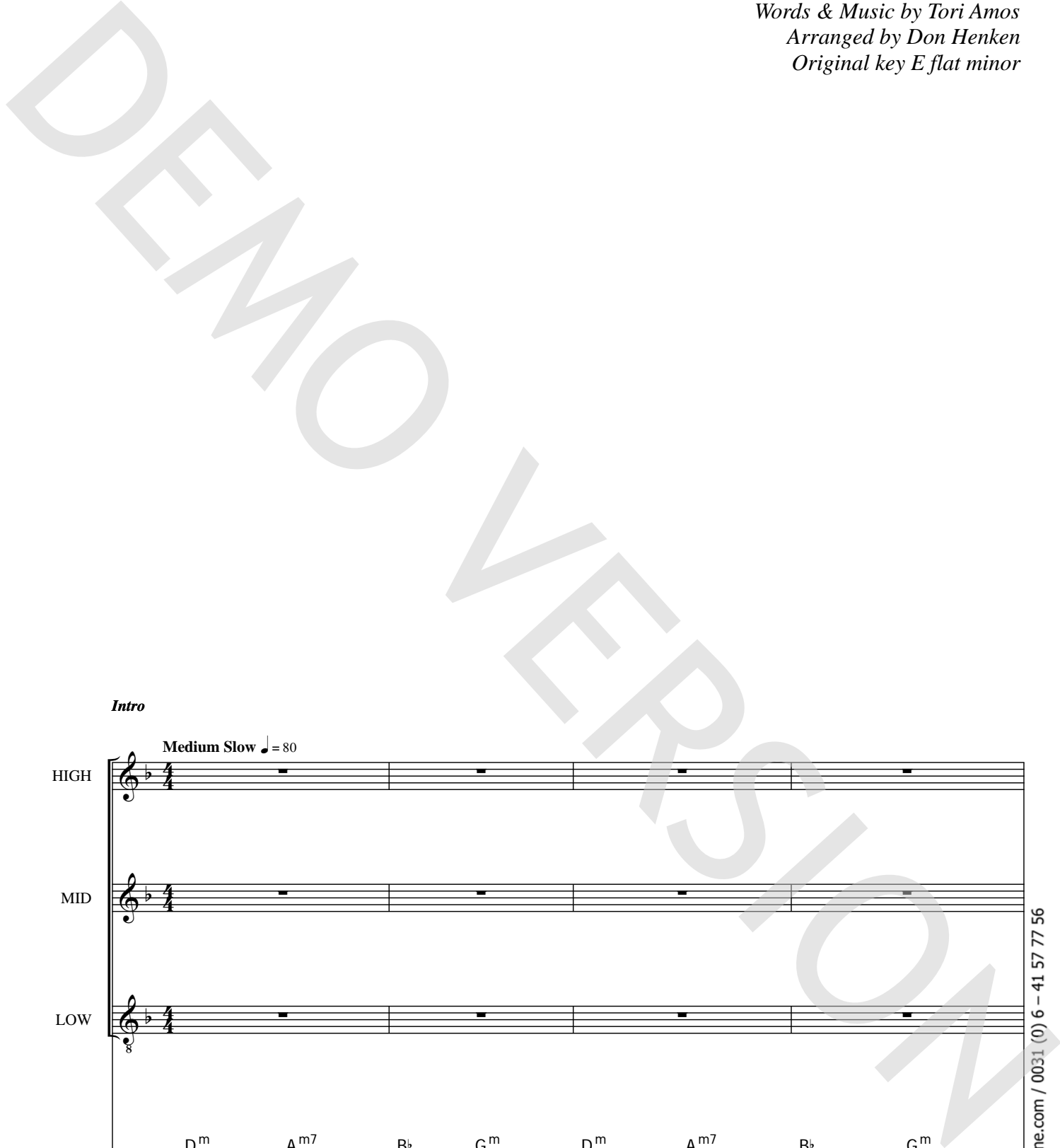
D. S.



Winter

- Tori Amos -

Words & Music by Tori Amos
Arranged by Don Henken
Original key E flat minor



Intro

Medium Slow ♩ = 80

Musical score for Piano Solo Advanced, featuring three staves (HIGH, MID, LOW) and a Piano Adv. section with chords and a bass line.

Chords: D^m, A^{m7}, B^b, G^m, D^m, A^{m7}, B^b, G^m

Tempo: Medium Slow ♩ = 80

Dynamic: *mp*

13

H
new boots on. I get a lit-tle warm in my heart when I think of win - ter. I put my hand in my

M
p
Oo _____ oo _____ Oo _____

L
p
Oo _____ oo _____ Oo _____

P.A
B \flat G m D m A m7 B \flat G m D m A m7

Verse 2

17

H
fa - ther's glove. I run off where the drifts get deep - er.

M
mp
fa - ther's glove. I run off where the drifts get deep - er.

L
p
fa - ther's glove. Oo _____ oo _____

P.A
B \flat G m D m A m7 B \flat G m

29

H
— When you gon - na love you as much ___ as I ___ do? When you gon - na make up your mind?

M
mp When you gon - na love you as much ___ as I ___ do? When you gon - na make up your mind?

L
8

P.A
D^m B^b F D^m B^b F *cresc.*

33

H
— 'Cause things are gon - na change ___ so fast. ___ All the white hors-es are still in bed.

M
mf 'Cause things are gon - na change so fast. ___ All the white hors-es are still in bed.

L
cresc. *mf* 'Cause things are gon - na change so fast. ___ All the white hors-es are still in bed.

P.A
D^m B^b F^{add2} B^b D^m D^{m7} *mf*

45

H
as win - ter melts, flow - ers com - pet - ing for the sun. Years go by and I'm

M
as win - ter melts, flow - ers com - pet - ing for the sun. Years go by and I'm

L
as win - ter melts, flow - ers com - pet - ing for the sun. Years go by and I'm

B \flat G m D m A m7 B \flat G m D m A m7

P.A

Verse 4

49

H
here still wait - ing, With - er - ing where some snow - man was. Mir - ror, mir - ror, where's the

M
here still wait - ing, With - er - ing where some snow - man was. Mir - ror, mir - ror, where's the

L
here still wait - ing, With - er - ing where some snow - man was. Mir - ror, mir - ror, where's the

B \flat G m D m A m7 B \flat G m D m A m7

P.A

Chorus 2

61 *p*

H
When you gon - na make up your mind? ____ When you gon - na love you as much ____ as I ____ do?

M
When you gon - na make up your mind? ____ When you gon - na love you as much ____ as I ____ do?

L

P.A.
p

F D^m B^b F D^m B^b

65 *cresc.* *f*

H
When you gon - na make up your mind? ____ 'Cause things are gon - na change ____ so fast. ____ All the white

M
cresc. *f*
When you gon - na make up your mind? ____ 'Cause things are gon - na change so fast. ____ All the white

L
mf cresc. *f*
'Cause things are gon - na change so fast. ____ All the white

P.A.
F D^m B^b F^{add2} B^b

77

H

M

L

P.A

Ba ba ba ba. Ba ba ba ba.

Ba ba ba ba. Ba, ba ba ba

D^m B[♭]maj7 F G^m D^m B[♭]maj7 F G^m

81

H

M

L

P.A

Ba ba ba ba ba. Hair is grey and the fires are burn - ing.

Ba ba ba ba. Hair is grey and the fires are burn - ing.

ba. Ba ba ba. Hair is grey and the fires are burn - ing.

D^m B[♭]maj7 F G^m D^m B[♭]maj7 F G^m

Verse 5

f

Chorus 3

93 *p*

H
When you gon - na make up your mind? ___ When you gon - na love you as much ___ as I ___ do?

M
p
When you gon - na love you as much ___ as I ___ do?

L

P.A.
F D^m B^b F D^m B^b

97 *f* *mf*

H
When you gon - na make up your mind? ___ 'Cause things are gon - na change ___ so fast. ___ All the white

M
f *mf*
When you gon - na make up your mind? ___ 'Cause things are gon - na change so fast. ___ All the white

L
f *mf*
'Cause things are gon - na change so fast. ___ All the white

P.A.
F D^m B^b F^{add2} B^b

109 *mp*

H All the white hors - es. Ah.

M All the white hors - es. Ah.

L All the white hors - es. Ah.

P.A. *D^m A^{m7} B^b G^m D^m A^{m7}*

112 *p* *rit.*

H Mmm.

M Mmm.

L Mmm.

P.A. *B^b G^m D^m A^{m7} B^b*



Winter

- Tori Amos -

Words & Music by Tori Amos
Arranged by Don Henken
Original key E flat minor

DEMO VERSION

Intro

Medium Slow ♩ = 80

HIGH

MID

LOW

Piano Interm.

mp

D^m A^{m7} B^b G^m D^m A^{m7} B^b G^m

13

H
new boots on. I get a lit-tle warm in my heart when I think of win - ter. I put my hand in my

M
p
Oo _____ oo _____ Oo _____

L
p
Oo _____ oo _____ Oo _____

P.I.
B \flat G m D m A m7 B \flat G m D m A m7

Verse 2

17

H
fa - ther's glove. I run off where the drifts get deep - er.

M
mp
fa - ther's glove. I run off where the drifts get deep - er.

L
p
fa - ther's glove. Oo _____ oo _____

P.I.
B \flat G m D m A m7 B \flat G m

29

H *cresc.*

— When you gon - na love you as much ___ as I ___ do? When you gon - na make up your mind?

M *mp* *cresc.*

— When you gon - na love you as much ___ as I ___ do? When you gon - na make up your mind?

L

P.I. *D^m B^b F D^m B^b F cresc.*

33

H *mf*

— 'Cause things are gon - na change ___ so fast. ___ All the white hors - es are still in bed.

M *mf*

— 'Cause things are gon - na change so fast. ___ All the white hors - es are still in bed.

L *cresc.* *mf*

— 'Cause things are gon - na change so fast. ___ All the white hors - es are still in bed.

P.I. *D^m B^b F^{add2} B^b D^m D^{m7} mf*

45

H
as win - ter melts, flow - ers com - pet - ing for the sun. Years go by and I'm

M
as win - ter melts, flow - ers com - pet - ing for the sun. Years go by and I'm

L
as win - ter melts, flow - ers com - pet - ing for the sun. Years go by and I'm

P.I.
B \flat G m D m A m7 B \flat G m D m A m7

49

H
here still wait - ing, With - er - ing where some snow - man was. Mir - ror, mir - ror, where's the

M
here still wait - ing, With - er - ing where some snow - man was. Mir - ror, mir - ror, where's the

L
here still wait - ing, With - er - ing where some snow - man was. Mir - ror, mir - ror, where's the

P.I.
B \flat G m D m A m7 B \flat G m D m A m7

Verse 4

mf

Chorus 2

61 *p*

H
When you gon - na make up your mind? ____ When you gon - na love you as much ____ as I ____ do?

M
When you gon - na make up your mind? ____ When you gon - na love you as much ____ as I ____ do?

L

P.I. *p*

F D^m B^b F D^m B^b

65 *cresc.* *f*

H
When you gon - na make up your mind? ____ 'Cause things are gon - na change ____ so fast. ____ All the white

M
cresc. *f*
When you gon - na make up your mind? ____ 'Cause things are gon - na change so fast. ____ All the white

L
mf cresc. *f*
'Cause things are gon - na change so fast. ____ All the white

P.I.

F D^m B^b F^{add2} B^b

77

H

M

L

P.I.

Ba ba ba ba. Ba ba ba ba.

Ba ba ba ba. Ba, ba ba ba

D^m B[♭]maj7 F G^m D^m B[♭]maj7 F G^m

81

H

M

L

P.I.

Ba ba ba ba ba. Hair is grey and the fires are burn - ing.

Ba ba ba ba. Hair is grey and the fires are burn - ing.

ba. Ba ba ba. Hair is grey and the fires are burn - ing.

D^m B[♭]maj7 F G^m D^m B[♭]maj7 F G^m

Verse 5

f

Chorus 3

93 *p*

H
When you gon - na make up your mind? ____ When you gon - na love you as much ____ as I ____ do?

M
p
When you gon - na love you as much ____ as I ____ do?

L

P.I.
F D^m B^b F D^m B^b

97 *f* *mf*

H
When you gon - na make up your mind? ____ 'Cause things are gon - na change ____ so fast. ____ All the white

M
f *mf*
When you gon - na make up your mind? ____ 'Cause things are gon - na change so fast. ____ All the white

L
f *mf*
'Cause things are gon - na change so fast. ____ All the white

P.I.
F D^m B^b F^{add2} B^b

109 *mp*

H
All the white hors - es. Ah.

M
All the white hors - es. Ah.

L
All the white hors - es. Ah.

P.I.
D^m A^{m7} B^b G^m D^m A^{m7}

112 *p* *rit.*

H
Mmm.

M
Mmm.

L
Mmm.

P.I.
B^b G^m D^m A^{m7} B^b



Winter

- Tori Amos -

Words & Music by Tori Amos
Arranged by Don Henken
Original key E flat minor

Intro

Medium Slow ♩ = 80

Verse 1

mp

HIGH

MID

LOW

Snow can wait, I for - got my mit - tens.

12

H

M

L

Wipe my nose, get my new boots on. I get a lit-tle warm in my heart when I

p

Oo

Oo

25 *mf* *pp* Whisper

H
for your - self, 'cause I can't al - ways be ___ a - round." He says:

M *mf* *pp* Whisper
for your - self, 'cause I can't al - ways be ___ a - round." He says:

L *mf*
for your - self, 'cause I can't al - ways be ___ a - round."

Chorus 1

28 *mp*

H
When you gon-na make up your mind? ___ When you gon-na love you as much

M
When you gon-na love you as much

L
When you gon-na love you as much

31 *cresc.*

H
___ as I ___ do? When you gon-na make up your mind? ___ 'Cause things are gon-na

M *cresc.*
___ as I ___ do? When you gon-na make up your mind? ___ 'Cause things are gon-na

L
___ as I ___ do? When you gon-na make up your mind? ___ 'Cause things are gon-na

'Cause things are gon-na

47

H
for the__ sun. Years go by and I'm here still wait - ing, With - er - ing where some

M
for the__ sun. Years go by and I'm here still wait - ing, With - er - ing where some

L
for the__ sun. Years go by and I'm here still wait - ing, With - er - ing where some

Verse 4

51

H
snow - man was. *mf* Mir - ror, mir - ror, where's the crys - tal pal - ace? But I on - ly can

M
snow - man was. *mf* Mir - ror, mir - ror, where's the crys - tal pal - ace? But I on - ly can

L
snow - man was. *mf* Mir - ror, mir - ror, where's the crys - tal pal - ace? But I on - ly can

55

H
see my - self. __ *f* Skat - ing a - round the truth who I ___ am.

M
see my - self. __ *f* Skat - ing a - round the truth who I am.

L
see my - self. __ Ah _____

67 *f* *mf*

H change so fast. All the white hors-es are still in bed. I tell you that I'll

M change so fast. All the white hors-es are still in bed. I tell you that I'll

L change so fast. All the white hors-es are still in bed. I tell you that I'll

71 *cresc.* *f*

H al - ways want you near. You say that things change, my

M al - ways want you near. You say that things change, my

L al - ways want you near. You say that things change, my

Interlude

75

H dear.

M dear. Ba ba ba ba. Ba ba ba ba.

L dear. Ba ba ba. Ba ba ba ba. Ba, ba ba ba

Chorus 3

93 *p*

H
When you gon-na make up your mind? ___ When you gon-na love you as much *p*

M
When you gon-na love you as much

L

96 *f*

H
___ as I ___ do? When you gon-na make up your mind? ___ 'Cause things are gon-na

M
___ as I ___ do? When you gon-na make up your mind? ___ 'Cause things are gon-na

L
'Cause things are gon-na

99 *mf*

H
change so fast. ___ *mf* All the white hors-es are still in bed. ___ I tell you that I'll

M
change so fast. ___ *mf* All the white hors-es are still in bed. ___ I tell you that I'll

L
change so fast. ___ All the white hors-es are still in bed. ___ I tell you that I'll

Winter

- Tori Amos -

Words & Music by Tori Amos
Arranged by Don Henken
Original key E flat minor

Intro Medium Slow ♩ = 80

Verse 1 8

Verse 2 8

Chorus 1 28 16

Verse 3 8

Verse 4 8

Chorus 2 2

64 *f* *mp* *mf*

Interlude

73 *cresc.* *f*

Verse 5

81 *f*

Chorus 3

88 *p*

96 *f* *mp* *mf*

Coda

105 *p* *rit.*

Winter

- Tori Amos -

Words & Music by Tori Amos
Arranged by Don Henken
Original key E flat minor

Intro Medium Slow ♩ = 80

Verse 1 8

Verse 2 8

Chorus 1 28 16

Verse 3 8

Verse 4 8

Chorus 2 2

64 *f* *mp* *mf*

Interlude

72 *cresc.* *f*

Verse 5

80 *f*

Chorus 3

88 *p*

97 *f* *mp* *mf*

Coda

106 4 *p* *rit.*



12 Eb Instrument

Winter

- Tori Amos -

Words & Music by Tori Amos
Arranged by Don Henken
Original key E flat minor

Intro

Medium Slow ♩ = 80

Verse 1

Verse 2

Chorus 1

Verse 3

Verse 4

Chorus 2

Interlude

Verse 5

Chorus 3

Coda

© www.ChorusOnline.com / 0031 (0) 6 - 41 57 77 56

Winter

- Tori Amos -

Words & Music by Tori Amos
Arranged by Don Henken
Original key E flat minor

Intro Medium Slow ♩ = 80

1 D^m A^{m7} B^b G^m D^m A^{m7}

4 B^b G^m D^m A^{m7} B^b G^m

7 D^m A^{m7} B^b G^m

Verse 1

10 D^m A^{m7} B^b G^m D^m A^{m7}

Chorus 1

28 *p*

F D^m B^b F

31 *cresc.*

D^m B^b F D^m B^b

34 *mf*

F add2 B^b D^m D^m7

37

G^m F add2 B^b

40 *mp*

D^m C B^b C D^m A^m7

58 D^m A^{m7} B^b G^m

Chorus 2

61 F D^m B^b F

p

64 D^m B^b F D^m B^b

67 F^{add2} B^b D^m D^{m7}

70 G^m F^{add2} B^b

88 F G^m D^m B^bmaj7 F G^m

Chorus 3

91 F D^m B^b

95 F D^m B^b F

98 D^m B^b F add2 B^b

101 D^m D^m7 G^m F add2

Winter

- Tori Amos -

Words & Music by Tori Amos
Arranged by Don Henken
Original key E flat minor

Medium Slow ♩ = 80
Intro

D^m A^{m7} B^b G^m D^m A^{m7}

B^b G^m D^m A^{m7} B^b G^m

D^m A^{m7} B^b G^m

Verse 1

D^m A^{m7} B^b G^m D^m A^{m7}

Chorus 1

28 *p* F D^m B^b F

31 *cresc.* D^m B^b F D^m B^b

34 *mf* F add2 B^b D^m D^{m7}

37 G^m F add2 B^b

40 D^m C B^b C D^m A^{m7} *mp*

58 D^m A^{m7} $B\flat$ G^m

Chorus 2

61 F D^m $B\flat$ F

p

64 D^m $B\flat$ F D^m $B\flat$

67 F^{add2} $B\flat$ D^m D^{m7}

70 G^m F^{add2} $B\flat$

F G^m D^m B^bmaj7 F G^m

88

Chorus 3
F

91

D^m B^b F D^m B^b

94

F D^m B^b F add2

97

B^b D^m D^m7 G^m

100

Winter

- Tori Amos -

Words & Music by Tori Amos
Arranged by Don Henken
Original key E flat minor

Medium Slow ♩ = 80

Intro

Verse 1

Verse 2

8 8 8 8

Strings

p

Trombone

Chorus 1

23

mp

mp

34

mf

Strings

Verse 3

42

f

p

Winter

- Tori Amos -

Words & Music by Tori Amos
Arranged by Don Henken
Original key E flat minor

Medium Slow ♩ = 80

Intro
Ac. Guitar (nylon)
Finger picking

D^m A^{m7} B^b G^m D^m A^{m7} B^b G^m



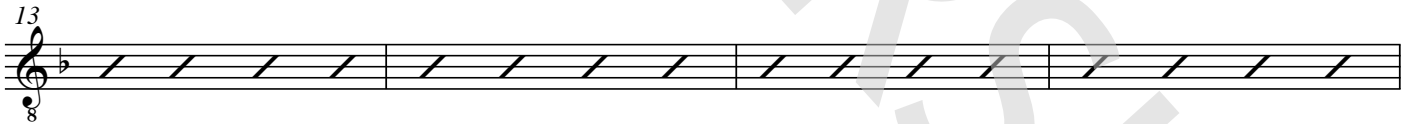
D^m A^{m7} B^b G^m D^m A^{m7} B^b G^m



Verse 1
D^m A^{m7} B^b G^m D^m A^{m7}



B^b G^m D^m A^{m7} B^b G^m D^m A^{m7}



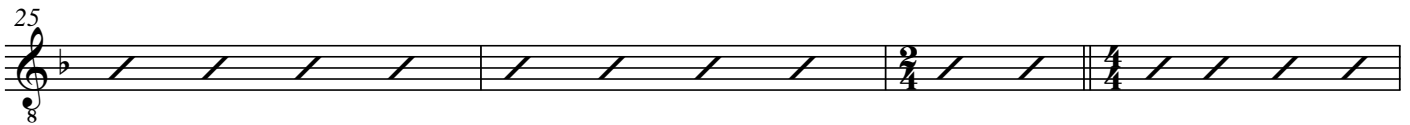
Verse 2
B^b G^m D^m A^{m7} B^b G^m



D^m A^{m7} B^b G^m D^m A^{m7} B^b G^m



D^m A^{m7} B^b G^m Chorus 1
F



Winter

- Tori Amos -

Words & Music by Tori Amos
Arranged by Don Henken
Original key E flat minor

Intro

Medium Slow ♩ = 80

Verse 1

Verse 2

8 8 4

Chorus 1

23 D^m A^{m7} B^b G^m D^m A^{m7} B^b G^m F

29 D^m B^b F D^m B^b F D^m B^b

34 F^{add2} B^b D^m D^{m7} G^m F^{add2} B^b

40 D^m C B^b C D^m A^{m7} B^b G^m Verse 3 D^m A^{m7}

45 B^b G^m D^m A^{m7} B^b G^m D^m A^{m7} B^b G^m

Verse 4

50 D^m A^{m7} B^b G^m D^m A^{m7} B^b G^m D^m A^{m7}

55 B^b G^m D^m A^{m7} B^b G^m D^m A^{m7} B^b G^m

Drumkit/Percussion

High Tom
 Hi-Hat closed
 Hi-Hat open
 Mid Tom
 Low Tom
 Ride Cymbal
 Crash Cymbal
 Triangle mute
 Shareclick
 Hi-Hat Foot
 Tambourine Beating
 Triangle open
 Bassdrum (Kick)
 Snaredrum
 Floor Tom
 Ride Bell/Cup
 Splash Cymbal

Shaker (eggs)
 Claves
 High Timbale
 Sleigh Bells
 Bell Tree
 Maracas
 Wind Chimes
 Handclap
 Guro
 Woodblock High
 Timbale Low
 Agogo High
 Cowbell
 Conga
 Cabasa
 Woodblock Low
 Agogo Low



18 Drum Set

Winter

- Tori Amos -

Words & Music by Tori Amos
Arranged by Don Henken
Original key E flat minor

Intro

Medium Slow ♩ = 80

8 8 8

Verse 1

Verse 2

Chorus 1

Verse 3

Verse 4

Chorus 2

Interlude

28 16 8 8 14

76

Verse 5

80

84

88 2

Chorus 3

Coda

93 14 8

Winter

- Tori Amos -

Words & Music by Tori Amos
Arranged by Don Henken
Original key E flat minor

Intro Medium Slow ♩ = 80

D^m A^{m7} B^b G^m D^m A^{m7} B^b G^m D^m A^{m7}

Verse 1

B^b G^m D^m A^{m7} B^b G^m D^m A^{m7}

Snow can wait, I for -

B^b G^m D^m A^{m7} B^b G^m

got my mit - tens. Wipe my nose, get my new boots on. —

D^m A^{m7} B^b G^m D^m A^{m7}

I get a lit - tle warm in my heart when I think of win - ter. I put my hand in my

B^b G^m D^m A^{m7} B^b G^m

fa - ther's glove. I run off where the drifts get deep - er.

D^m A^{m7} B^b G^m D^m A^{m7}

Sleep - ing beau - ty, — it trips me with a frown. I hear a voice: "You must

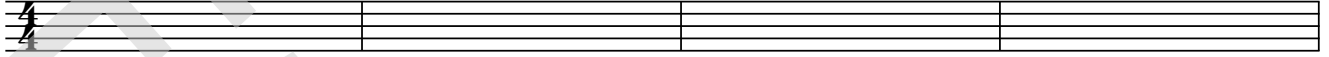
Winter

- Tori Amos -

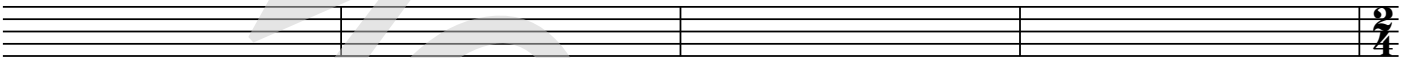
Words & Music by Tori Amos
Arranged by Don Henken
Original key E flat minor

Intro

Medium Slow ♩ = 80



5



Verse 1

9



13

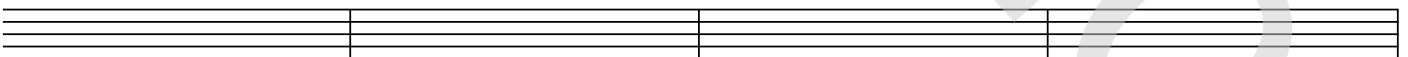


Verse 2

17



21

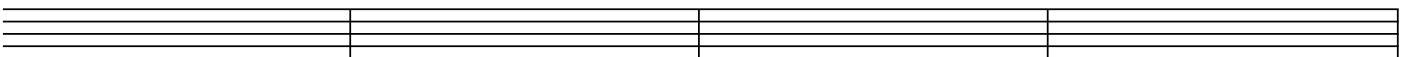


Chorus 1

25



29





21 Lyrics

Winter

- Tori Amos -

*Words & Music by Tori Amos
Arranged by Don Henken
Original key E flat minor*

Intro

Verse 1

Snow can wait, I forgot my mittens.
Wipe my nose, get my new boots on.
I get a little warm in my heart when I think of winter.
I put my hand in my father's glove.

Verse 2

I run off where the drifts get deeper.
Sleeping beauty trips me with a frown.
I hear a voice: "You must learn to stand up for yourself,
'cause I can't always be around" . He says:

Chorus 1

When you gonna make up your mind ?
When you gonna love you as much as I do ?
When you gonna make up your mind ?
'Cause things are gonna change so fast.
All the white horses are still in bed.
I tell you that I'll always want you near.
You say that things change, my dear.

Verse 3

Boys get discovered as winter melts,
flowers competing for the sun.
Years go by and I'm here still waiting,
withering where some snowman was.

Verse 4

Mirror, mirror, where's the crystal palace ?
But I only can see myself.
Skating around the truth who I am
But I know, Dad the ice is getting thin.

Chorus 2 = Chorus 1

Interlude

Ba, ba etc..

Verse 5

Hair is grey, and the fires are burning.
So many dreams on the shelf.
You say I wanted you to be proud of me
I always wanted that myself

Chorus 3 = Chorus 1

Coda

Never change. All the white horses. Ah. Mmm.