

SHINE [Take That] Chorus-LIGHT SAB Choir Combo

Pag.

02	Chorus-LIGHT SAB Full Score combo C instrument
12	Chorus-LIGHT SAB Full Score combo Bb instrument
22	Chorus-LIGHT SAB Full Score combo Eb instrument
32	Chorus-LIGHT SAB Full Score combo 2 extra staves
42	Chorus-LIGHT SAB Piano Solo Advanced
56	Chorus-LIGHT SAB Piano Solo Intermediate
70	Chorus-LIGHT SAB Vocals
80	C Instrument
82	Bb Instrument
84	Eb Instrument
86	Piano Combo
90	Piano Solo Advanced
94	Piano Solo Intermediate
98	Synthesizer
101	Guitar
104	Bass Guitar
107	Drums
109	Leadsheet (melody, lyrics, chords)
113	Empty Paper
116	Lyrics



PARTNERS

Chorus-LIGHT SAB Full Score combo C instrument

Shine

- Take That -

Words and Music by Gary Barlow, Howard Donald,
Mark Owen, Stephen Robson and Jason Orange
Arranged by Mathijs Zuidema
Original Key

Moderately ♩=90

High

Mid

Low

C Instr.

Piano Combo

Synthesizer

Electric Guitar

Bass Guitar

Drums

A VERSE 1

mf

You, you're such a big star to me...

*Eb*⁵

mf

/w *overdrive*

mf

mf

High

Mid

Low

C

P.C.

Synth.

Gr.

Bass

Drs.

you're ev - 'ry - thing I wan - na be... but you're stuck in a hole... and I want you to get out...

*G*⁵

*Bb*⁵

A^{b5}

CHORUS

High: all, all. So come on, Ooh, Ooh, Ooh your time is com-ing, don't be late.

Mid: all, all, So come on, so come on, get it on, don't know what you're wait-ing for, your time is com-ing, don't be late.

Low: all, all, So come on, so come on, get it on, don't know what you're wait-ing for, your time is com-ing, don't be late.

C: Bb, Ab/Bb, Eb, G7, Cm, C^ø/Bb, Eb⁶/Bb, Ab, Eb/G

P.C. (Piano/Chords): *f*

Str. (Strings): *mf*

Gr. (Guitar): Bb⁵, Ab/Bb, Eb⁵, G⁵, C⁵, C^ø/Bb, Eb⁶/Bb, Ab, Eb/G

Bass

Drs. (Drums): *fill*

High: hey hey! So come on, Ooh, Ooh, Ooh Let it shi(n) - ah

Mid: hey hey! So come on, see the light on your face let is shine, just let it shine, *cresc.*

Low: hey hey! So come on, see the light on your face let is shine, just let it shine, *cresc.*

C: F7, Bb, Abadd⁹/Bb, Eb, G⁷⁹, Cm, C^ø/Bb, C^b⁶

P.C. (Piano/Chords): *f*, *mf*

Synth. (Synthesizer): *f*, *mf*

Gr. (Guitar): F⁵, Bb, Bb⁷, Eb⁵, G⁵, C⁵

Bass

Drs. (Drums): *f*

PRE-CHORUS
E

High Ah Ah Smile, smile, smile. Oh, don't you let your de - mons pull you down,

Mid Ah Ah Smile, smile, smile. Oh, don't you let your de - mons pull you down,

Low and it may feel good, and you might want to Smile, smile, smile. Oh, don't you let your de - mons pull you down,

C

P.C. Bbm Ab Abm6 G7 Cm /Bb

Synth.

Gr. Bb5 Ab5 G5 C5

Bass

Drs. 31

CHORUS

High when you can have it all. You can have it all, all, all. So come on, Ooh, Ooh.

Mid when you can have it all. You can have it all, all, all. So come on, so come on, get it on.

Low when you can have it all. You can have it all, all, all. So come on, so come on, get it on.

C

P.C. Ab Eb/G Fm7 Eb Bb Ab/Bb Eb G7

Synth.

Gr. Ab5 Eb5 F5 Eb5 Bb5 Eb5 G5

Bass

Drs. 35 fill

BRIDGE
G

High *sf* Hey! *mf* Let me know__ ya; You're all__ that mat - ters__ to me__

Mid *sf* Hey! *mf* Let me know__ ya; You're all__ that mat - ters__ to me__

Low *sf* Hey! *mf* Let me know__ ya; You're all that mat - ters to me!

C

P.C. *Db* *Ab/C* *Db* *Eb*

Synth.

Gr. *Eb5* *Db5* *Ab5/C* *Db5* *Eb5*

Bass

Drs. 47 pushing forward

High *sf* Hey! *mf* Let me show__ ya; You're all__ that mat - ters__ to me__

Mid *sf* Hey! *mf* Let me show__ ya; You're all__ that mat - ters__ to me__

Low — *mf* Let me show__ ya; You're all that mat - ters to me!

C

P.C. *Db* *Ab/C* *Db* *Eb*

Synth.

Gr. **4**

Bass *small fill*

Drs. 51 *large fill*

BRIDGE

High *mf* Let me know_ ya; You're all_ that mat - ters_ to me_

Mid *mf* Let me know_ ya; You're all_ that mat - ters_ to me_

Low *mf* Let me know_ ya; You're all that mat - ters to me!

C Eb Db Ab/C Db Eb

P.C.

Synth.

Gr. *mf* Eb⁵ Db⁵ Ab⁵/C Db⁵ Eb⁵

Bass

Drs. 63 *mf* *fill*

High *sf* Hey! *mf* Let me show_ ya; You're all_ that mat - ters_ to me_

Mid *sf* Hey! *mf* Let me show_ ya; You're all_ that mat - ters_ to me_

Low Let me show_ ya; You're all that mat - ters

C Db Ab/C Db Eb

P.C.

Synth.

Gr. 4

Bass

Drs. 67 *mf* *fill*



PARTNERS

Chorus-LIGHT SAB Full Score combo Bb instrument

Shine

- Take That -

Words and Music by Gary Barlow, Howard Donald,
Mark Owen, Stephen Robson and Jason Orange
Arranged by Mathijs Zuidema
Original Key

Moderately ♩=90

High

Mid

Low

Bb Instr.

Piano Combo

Synthesizer

Electric Guitar

Bass Guitar

Drums

A VERSE 1

mf

You, you're such a big star to me...

*Eb*⁵

mf

/w *overdrive*

mf

mf

High

Mid

Low

Bb

P.C.

Synth.

Gr.

Bass

Drs.

you're ev - 'ry - thing I wan - na be... but you're stuck in a hole... and I want you to get out...

*G*⁵

*Bb*⁵

*Ab*⁵

CHORUS

High *f* all, all. So come on, *mp* Ooh, Ooh, Ooh *mf* your time is com - ing, don't be late.

Mid *f* all, all, So come on, *mf* so come on, get it on, don't know what you're wait - ing for, *mf* your time is com - ing, don't be late.

Low *f* all, all, So come on, *mf* so come on, get it on, don't know what you're wait - ing for, *mf* your time is com - ing, don't be late.

Bb

P.C. *f* Bb Ab/Bb Eb G7 Cm C^{ø7}/Bb Eb⁶/Bb Ab Eb/G

Str. [Strings]

Gr. *mp* Bb⁵ Ab/Bb Eb⁵ G⁵ C⁵ C^{ø7}/Bb Eb⁶/Bb Ab Eb/G

Bass

Drs. *fill*

High *f* hey hey! So come on, *mp* Ooh, Ooh, Ooh *mf* Let it shi(n) - ah

Mid *f* hey hey! So come on, *mf* see the light on your face let is shine, just let it shine, *cresc.*

Low *f* hey hey! So come on, *mf* see the light on your face let is shine, just let it shine, *cresc.*

Bb

P.C. F7 Bb Abadd⁹/Bb Eb G7^{b9} Cm C^{ø7}/Bb C^{b6}

Synth. *f* *mf*

Gr. F⁵ Bb Bb⁷ Eb⁵ G⁵ C⁵ *f*

Bass

Drs. *fill*

PRE-CHORUS

E

High Ah Ah Smile, smile, smile. Oh, don't you let your de - mons pull you down,

Mid Ah Ah Smile, smile, smile. Oh, don't you let your de - mons pull you down,

Low and it may feel good, and you might want to Smile, smile, smile. Oh, don't you let your de - mons pull you down,

Bb

P.C. Bbm Ab Abm6 G7 Cm /Bb

Synth.

Gr. Bb5 Ab5 G5 C5

Bass

Drs. 31

CHORUS

F

High when you can have it all. You can have it all, all, all. So come on, Ooh, Ooh.

Mid when you can have it all. You can have it all, all, all. So come on, so come on, get it on.

Low when you can have it all. You can have it all, all, all. So come on, so come on, get it on.

Bb

P.C. Ab Eb/G Fm7 Eb Bb Ab/Bb Eb G7

Synth.

Gr. Ab5 Eb5 F5 Eb5 Bb5 Eb5 G5

Bass

Drs. 35 fill

BRIDGE
G

High *sf* Hey! *mf* Let me know_ ya; You're all_ that mat - ters_ to me_

Mid *sf* Hey! *mf* Let me know_ ya; You're all_ that mat - ters_ to me_

Low *sf* Hey! *mf* Let me know_ ya; You're all that mat - ters to me!

Bb

P.C. *Db* *Ab/C* *Db* *Eb*

Synth.

Gr. *Eb5* *Db5* *Ab5/C* *Db5* *Eb5*

Bass

Drs. 47 pushing forward

High *sf* Hey! *mf* Let me show_ ya; You're all_ that mat - ters_ to me_

Mid *sf* Hey! *mf* Let me show_ ya; You're all_ that mat - ters_ to me_

Low — *mf* Let me show_ ya; You're all that mat - ters to me!

Bb

P.C. *Db* *Ab/C* *Db* *Eb*

Synth.

Gr. **4**

Bass *small fill*

Drs. 51 *large fill*

BRIDGE

mf Let me know_ ya; You're all_ that mat - ters_ to me_

mf Let me know_ ya; You're all_ that mat - ters_ to me_

mf Let me know_ ya; You're all that mat - ters to me!

E_b *D_b* *A_b/C* *D_b* *E_b*

E_b⁵ *D_b⁵* *A_b/C* *D_b⁵* *E_b⁵*

mf

63 *fill*

sf *mf* Hey! Let me show_ ya; You're all_ that mat - ters_ to me_

sf *mf* Hey! Let me show_ ya; You're all_ that mat - ters_ to me_

Let me show_ ya; You're all that mat - ters

D_b *A_b/C* *D_b* *E_b*

4

fill

67



PARTNERS

Chorus-LIGHT SAB Full Score combo Eb instrument

Shine

- Take That -

Words and Music by Gary Barlow, Howard Donald,
Mark Owen, Stephen Robson and Jason Orange
Arranged by Mathijs Zuidema
Original Key

Moderately ♩=90

High

Mid

Low

Eb Instr.

Piano Combo

Synthesizer

Electric Guitar

Bass Guitar

Drums

A VERSE 1

mf

You, you're such a big star to me...

mf

/w overdrive

mf

mf

mf

High

Mid

Low

Eb

P.C.

Synth.

Gr.

Bass

Drs.

you're ev - 'ry - thing I wan - na be... but you're stuck in a hole... and I want you to get out...

*G*⁵ *Bb*⁵ *Ab*⁵

4

CHORUS

High: all, all. So come on, Ooh, Ooh, Ooh your time is com-ing, don't be late.

Mid: all, all, So come on, so come on, get it on, don't know what you're wait-ing for, your time is com-ing, don't be late.

Low: all, all, So come on, so come on, get it on, don't know what you're wait-ing for, your time is com-ing, don't be late.

P.C. Chords: Bb, Ab/Bb, Eb, G7, Cm, C^ø/Bb, Eb⁶/Bb, Ab, Eb/G

Str. [Strings]

Gr. Chords: Bb⁵, Ab/Bb, Eb⁵, G⁵, C⁵, C^ø/Bb, Eb⁶/Bb, Ab, Eb/G

Bass

Drs. *fill*

High: hey hey! So come on, Ooh, Ooh, Ooh Let it shi(n) - ah

Mid: hey hey! So come on, see the light on your face let is shine, just let it shine, *cresc.*

Low: hey hey! So come on, see the light on your face let is shine, just let it shine, *cresc.*

P.C. Chords: F7, Bb, Abadd⁹/Bb, Eb, G⁷b⁹, Cm, C^ø/Bb, C^b6

Synth.

Gr. Chords: F⁵, Bb, Bb⁷, Eb⁵, G⁵, C⁵

Bass

Drs.

PRE-CHORUS
E

High Ah Ah Smile, smile, smile. Oh, don't you let your de - mons pull you down,

Mid Ah Ah Smile, smile, smile. Oh, don't you let your de - mons pull you down,

Low and it may feel good, and you might want to Smile, smile, smile. Oh, don't you let your de - mons pull you down,

Eb

P.C. Bbm Ab Abm6 G7 Cm /Bb

Synth.

Gr. Bb5 Ab5 G5 C5

Bass

Drs. 31

CHORUS

High when you can have it all. You can have it all, all, all. So come on, Ooh, Ooh.

Mid when you can have it all. You can have it all, all, all. So come on, so come on, get it on.

Low when you can have it all. You can have it all, all, all. So come on, so come on, get it on.

Eb

P.C. Ab Eb/G Fm7 Eb Bb Ab/Bb Eb G7

Synth.

Gr. Ab5 Eb5 F5 Eb5 Bb5 Eb5 G5

Bass

Drs. 35 fill

BRIDGE
G

High *sf* Hey! *mf* Let me know__ ya; You're all__ that mat - ters__ to me__

Mid *sf* Hey! *mf* Let me know__ ya; You're all__ that mat - ters__ to me__

Low *sf* Hey! *mf* Let me know__ ya; You're all that mat - ters to me!

Eb

P.C. *Db* *Ab/C* *Db* *Eb*

Synth.

Gr. *Eb5* *Db5* *Ab5/C* *Db5* *Eb5*

Bass

Drs. 47 pushing forward

High *sf* Hey! *mf* Let me show__ ya; You're all__ that mat - ters__ to me__

Mid *sf* Hey! *mf* Let me show__ ya; You're all__ that mat - ters__ to me__

Low — *mf* Let me show__ ya; You're all that mat - ters to me!

Eb

P.C. *Db* *Ab/C* *Db* *Eb*

Synth.

Gr. **4**

Bass *small fill*

Drs. 51 *large fill*

BRIDGE

High *mf* Let me know_ ya; You're all_ that mat - ters_ to me_

Mid *mf* Let me know_ ya; You're all_ that mat - ters_ to me_

Low *mf* Let me know_ ya; You're all that mat - ters to me!

Eb Eb Db Ab/C Db Eb

P.C.

Synth.

Gr. *mf* Eb⁵ Db⁵ Ab⁵/C Db⁵ Eb⁵

Bass

Drs. 63 *mf* *fill*

High *sf* Hey! *mf* Let me show_ ya; You're all_ that mat - ters_ to me_

Mid *sf* Hey! *mf* Let me show_ ya; You're all_ that mat - ters_ to me_

Low Let me show_ ya; You're all that mat - ters

Eb

P.C. Db Ab/C Db Eb

Synth.

Gr. 4

Bass

Drs. 67 *mf* *fill*



Chorus-LIGHT SAB Full Score combo 2 extra staves

Shine

- Take That -

Words and Music by Gary Barlow, Howard Donald,
Mark Owen, Stephen Robson and Jason Orange
Arranged by Mathijs Zuidema
Original Key

PARTNERS

Moderately ♩=90

High

Mid

Low

1

2

Piano Combo

Synthesizer

Electric Guitar

Bass Guitar

Drums

A VERSE 1

mf

You, you're such a big star to me...

E_b5

mf /w overdrive

High

Mid

Low

1

2

P.C.

Synth.

Gtr.

Bass

Des.

you're ev - 'ry - thing I wan - na be... but you're stuck in a hole... and I want you to get out...

G5 *B_b5* *A_b5*

High *f* all, all, So come on *mp* Ooh, Ooh, Ooh, *mf* your time is com - ing, don't be late...

Mid *f* all, all, So come on, *mf* so come on, get it on, don't know what you're wait - ing for, *mf* your time is com - ing, don't be late...

Low *f* all, all, So come on, *mf* so come on, get it on, don't know what you're wait - ing for, *mf* your time is com - ing, don't be late...

1

2

P.C. *f* $B\flat$ $A\flat/B\flat$ $E\flat$ G^7 Cm $C^{\#7}/B\flat$ $E\flat^6/B\flat$ $A\flat$ $E\flat/G$

Str. *Strings*

Gtr. *mp* $B\flat^5$ $A\flat/B\flat$ $E\flat^5$ G^5 C^5 $C^{\#7}/B\flat$ $E\flat^6/B\flat$ $A\flat$ $E\flat/G$

Bass

Drs. *fill*

High *f* hey hey! So come on *mp* Ooh, Ooh, Ooh, *mf* Let it shi(n) - ah

Mid *f* hey hey! So come on, *mf* see the light on your face, let is shine, just let it shine, *cresc.*

Low *f* hey hey! So come on, *mf* see the light on your face, let is shine, just let it shine, *cresc.*

1

2

P.C. F^7 $B\flat$ $A\flat add9/B\flat$ $E\flat$ $G^7\flat9$ Cm $C^{\#7}/B\flat$ $G\flat^6$

Synth. *f* *mf*

Gtr. F^5 $B\flat$ $B\flat^7$ $E\flat^5$ G^5 C^5

Bass

Drs. *fill*

PRE-CHORUS

High: Ah _____ Ah _____ Smile, smile, smile. Oh, don't you let your de - mons pull you down, _____

Mid: Ah _____ Ah _____ Smile, smile, smile. Oh, don't you let your de - mons pull you down, _____

Low: _____ and it may feel good _____ and you might want to Smile, smile, smile. Oh, don't you let your de - mons pull you down, _____

1: _____

2: _____

P.C.: **Bbm** **A^b** **A^bm⁶** **G⁷** **C^m** **/B^b**

Synth: *acc.*

Gtr: **B^b5** **A^b5** **G⁵** **C⁵**

Bass: _____

Drs. ₃₁ _____

High: _____ when you can have it all _____ You can have it all _____ all, all, So come on _____ *f* *mp* Ooh _____ Ooh _____

Mid: _____ when you can have it all _____ You can have it all _____ all, all, So come on _____ *f* *mf* so come on _____ get it on _____

Low: _____ when you can have it all _____ You can have it all _____ all, all, So come on _____ *f* *mf* so come on _____ get it on _____

1: _____

2: _____

P.C.: **A^b** **E^b/G** **F^m7** **E^b** **B^b** **A^b/B^b** **E^b** **G⁷**

Synth: *acc.*

Gtr: **A^b5** **E^b5** **F⁵** **E^b5** **B^b5** **E^b5** **G⁵**

Bass: _____

Drs. ₃₃ _____ *fill*

BRIDGE
G

High: Hey! Let me know ya; You're all that mat - ters to me

Mid: Hey! Let me know ya; You're all that mat - ters to me

Low: Hey! Let me know ya; You're all that mat - ters to me

1

2

P.C.: $D\flat$ $A\flat/C$ $D\flat$ $E\flat$

Synth.

Gr.: $E\flat^5$ $D\flat^5$ $A\flat^5/C$ $D\flat^5$ $E\flat^5$

Bass

Drs. 47 pushing forward

High: Hey! Let me show ya; You're all that mat - ters to me

Mid: Hey! Let me show ya; You're all that mat - ters to me

Low: Let me show ya; You're all that mat - ters to me

1

2

P.C.: $D\flat$ $A\flat/C$ $D\flat$ $E\flat$

Synth.

Gr.

Bass *small fill*

Drs. 51 *large fill*

High *mf* Let me know ya; You're all that mat - ters to me

Mid *mf* Let me know ya; You're all that mat - ters to me

Low *mf* Let me know ya; You're all that mat - ters to me

1

2

P.C. *E_b* *D_b* *A_b/C* *D_b* *E_b*

Synth.

Gtr. *mf* *E_b⁵* *D_b⁵* *A_b⁵/C* *D_b⁵* *E_b⁵*

Bass

Drs. 63 *ff*

High *sf* Hey! *mf* Let me show ya; You're all that mat - ters to me

Mid *sf* Hey! *mf* Let me show ya; You're all that mat - ters to me

Low Let me show ya; You're all that mat - ters

1

2

P.C. *D_b* *A_b/C* *D_b* *E_b*

Synth.

Gtr. *ff*

Bass

Drs. 64 *ff*



Chorus-LIGHT SAB Piano Solo Advanced

Shine

- Take That -

PARTNERS

Words and Music by Gary Barlow, Howard Donald,
Mark Owen, Stephen Robson and Jason Orange
Arranged by Mathijs Zuidema
Original Key

Moderately ♩=90

A VERSE 1

High

Mid

Low

Piano Solo Advanced

E \flat 5

E \flat

Mid

— you're ev-'ry-thing I wan-na be,— but you're stuck in a hole,— and I want you to get out

Gm

B \flat m

A \flat

P.S.
A.

High
— an-tic-i-pa-tion pulls you down, — when you can have it all. — You can have it all

Mid
— an-tic-i-pa-tion pulls you down, — when you can have it all. — You can have it all

Low
— an-tic-i-pa-tion pulls you down, — when you can have it all. — You can have it all

P.S.
A.
Cm /Bb Ab Eb/G F7 Eb

12

High
C CHORUS
f all, all. So come on, — *mp* Ooh — Ooh — Ooh —

Mid
f all, all, So come on, — *mf* so come on, — get it on — don't know what you're wait-ing for,

Low
f all, all, So come on, — *mf* so come on, — get it on — don't know what you're wait-ing for,

P.S.
A.
Bb Ab/Bb Eb G7 Cm Cø7/Bb Eb6/Bb

15

D VERSE 2

High *f* Stop! Be-ing so hard on your-self, — it's not good for your health

Mid *sf* Stop! *mp* Ah —

Low *sf* Stop! *mp* Ah —

P.S. *E_b* *G_m*
A. *mf*

24

High I know that you can change, — so clear your head and come round. —

Mid Ah — Ah —

Low Ah — Ah — *f* You on-ly have to o-pen your eyes,

P.S. *B_bm* *A_b* *A_bm⁶* *E_b*
A.

27

F CHORUS

High
You can have it all all, all. So come on, Ooh Ooh

Mid
You can have it all all, all, So come on, so come on, get it on

Low
You can have it all all, all, So come on, so come on, get it on

P.S.
A.
Fm7 Eb Bb Ab/Bb Eb G7

36

High
Ooh your time is com-ing, don't be late hey hey! So come on,

Mid
don't know what you're wait-ing for, your time is com-ing, don't be late hey hey! So come

Low
don't know what you're wait-ing for, your time is com-ing, don't be late hey hey! So come

P.S.
A.
Cm Cø7/Bb Eb6/Bb Ab Eb/G F7 Bb Abadd9/Bb

39

High
— ya; You're all_ that mat - ters_ to me_

Mid
— ya; You're all_ that mat - ters_ to me_

Low
mf
Let me know ya; You're all that mat-ters to me!

P.S.
A.
48
Db Ab/C Db Eb

High
sf Hey! *mf* Let me show_ ya; You're all_ that mat - ters_ to me

Mid
sf Hey! *mf* Let me show_ ya; You're all_ that mat - ters_ to me

Low
— Let me show ya;

P.S.
A.
51
Db Ab/C Db

High *mf* Ooh Let it shi(n) - ah *f* let it shine!

Mid let is shine, just let it shine, *cresc.* ah, *f* let it shine!

Low let is shine, just let it shine, *cresc.* ah, *f* let it shine!

P.S. Cm C^ø7/B^b G^b6 A^b9
A.

60

High *mf* | BRIDGE Let me know ya; You're all that mat - ters to me

Mid *mf* Let me know ya; You're all that mat - ters to me

Low *mf* Let me know ya;

P.S. E^b D^b A^b/C D^b
A.

63

J OUTRO

High *sf* Hey! *mf* Let me love__ ya; You're all__ that mat - ters_ to me

Mid *sf* Hey! *mf* Let me love__ ya; You're all__ that mat - ters_ to me

Low Shine! Shine! Shine!

P.S. A. Db Ab/C Db

71

High *sf* Hey! *mf* Let me show__ ya;

Mid *sf* Hey! *mf* Let me show__ ya;

Low Shine! Shine! Shine!

P.S. A. Eb Db

74



Chorus-LIGHT SAB Piano Solo Intermediate

Shine

- Take That -

PARTNERS

Words and Music by Gary Barlow, Howard Donald,
Mark Owen, Stephen Robson and Jason Orange
Arranged by Mathijs Zuidema
Original Key

Moderately ♩=90

A VERSE 1

High

Mid

Low

Piano Solo Intermediate

1

8

mf

You, you're such a big star to me,

E_b⁵ *E_b*

3

3

Mid

— you're ev-'ry-thing I wan-na be, — but you're stuck in a hole, — and I want you to get out

G_m *B_bm* *A_b*

P.S. I.

4

High
— an - tic - i - pa - tion pulls you down, — when you can have it all. — You can have it all

Mid
— an - tic - i - pa - tion pulls you down, — when you can have it all. — You can have it all

Low
— an - tic - i - pa - tion pulls you down, — when you can have it all. — You can have it all

P.S. I.
Cm /Bb Ab Eb/G F7 Eb

12

High
C CHORUS
f all, all. So come on, — *mp* Ooh — Ooh — Ooh —

Mid
f all, all, So come on, — *mf* so come on, — get it on — don't know what you're wait-ing for,

Low
f all, all, So come on, — *mf* so come on, — get it on — don't know what you're wait-ing for,

P.S. I.
Bb Ab/Bb Eb G7 Cm C°7/Bb Eb°6/Bb

15

D VERSE 2

High *f* Stop! Be-ing so hard on your-self, — it's not good for your health

Mid *sf* Stop! *mp* Ah —

Low *sf* Stop! *mp* Ah —

P.S. I. *E_b* *G_m* *mf*

24

High I know that you can change, — so clear your head and come round. —

Mid Ah — Ah —

Low Ah — Ah — *f* You on-ly have to o-pen your eyes,

P.S. I. *B_bm* *A_b* *A_bm⁶* *E_b*

27

F CHORUS

High *f* *mp*
 You can have it all all, all. So come on, Ooh Ooh

Mid *f* *mf*
 You can have it all all, all, So come on, so come on, get it on

Low *f* *mf*
 You can have it all all, all, So come on, so come on, get it on

P.S. I. *f*
 F7 Eb Bb Ab/Bb Eb G7

36

High *mf* *f*
 Ooh your time is com-ing, don't be late hey hey! So come on,

Mid *mf* *f*
 don't know what you're wait-ing for, your time is com-ing, don't be late hey hey! So come

Low *mf* *f*
 don't know what you're wait-ing for, your time is com-ing, don't be late hey hey! So come

P.S. I. *f*
 Cm C^ø7/Bb Eb⁶/Bb Ab Eb/G F7 Bb Ab^{add9}/Bb

39

High
— ya; You're all that mat - ters to me

Mid
— ya; You're all that mat - ters to me

Low
mf
Let me know ya; You're all that mat-ters to me!

P.S. I.
Db Ab/C Db Eb

48

High
sf Hey! *mf* Let me show — ya; You're all that mat - ters to me

Mid
sf Hey! *mf* Let me show — ya; You're all that mat - ters to me

Low
— Let me show ya;

P.S. I.
Db Ab/C Db

51

High *mf* Ooh Let it shi(n) - ah *f* let it shine!

Mid let is shine, just let it shine, *cresc.* ah, *f* let it shine!

Low let is shine, just let it shine, *cresc.* ah, *f* let it shine!

P.S. I. Cm C^o7/B^b G^b6 A^b9

60

High *mf* Let me know ya; You're all that mat - ters_ to me

Mid *mf* Let me know ya; You're all that mat - ters_ to me

Low *mf* Let me know ya;

P.S. I. D^b A^b/C D^b

63

BRIDGE

J OUTRO

High *sf* Hey! *mf* Let me love__ ya; You're all__ that mat - ters_ to me

Mid *sf* Hey! *mf* Let me love__ ya; You're all__ that mat - ters_ to me

Low Shine! Shine! Shine!

P.S. I. *Db* *Ab/C* *Db*

71

High *sf* Hey! *mf* Let me show__ ya;

Mid *sf* Hey! *mf* Let me show__ ya;

Low Shine! Shine! Shine!

P.S. I. *Eb* *Db*

74



Chorus-LIGHT SAB Vocals

Shine

- Take That -

PARTNERS

Words and Music by Gary Barlow, Howard Donald,
Mark Owen, Stephen Robson and Jason Orange
Arranged by Mathijs Zuidema
Original Key

Moderately ♩=90

A VERSE 1

High

Mid

Low

mf

You, you're such a big star to me, -

High

Mid

Low

— you're ev-'ry-thing I wan-na be, — but you're stuck in a hole, — and I want you to get out

C CHORUS

High *f* all, all. So come on, *mp* Ooh Ooh Ooh

Mid *f* all, all, So come on, *mf* so come on, get it on don't know what you're wait-ing for,

Low *f* all, all, So come on, *mf* so come on, get it on don't know what you're wait-ing for,

8
15

High *mf* your time is com-ing, don't be late *f* hey hey! So come on, *mp* Ooh Ooh

Mid *mf* your time is com-ing, don't be late *f* hey hey! So come on, *mf* see the light on your face

Low *mf* your time is com-ing, don't be late *f* hey hey! So come on, *mf* see the light on your face

18

High *mf* Ooh Let it shi(n) - ah *f* let it shine!

Mid let is shine, just let it shine, *cresc.* ah, *f* let it shine!

Low let is shine, just let it shine, *cresc.* ah, *f* let it shine!

21

PRE-CHORUS

E

High
Smile, smile, smile. Oh, don't you let your de - mons pull you down, when you can have it all.

Mid
Smile, smile, smile. Oh, don't you let your de - mons pull you down, when you can have it all.

Low
33 Smile, smile, smile. Oh, don't you let your de - mons pull you down, when you can have it all.

F CHORUS

High
— You can have it all all, all. So come on, Ooh Ooh

Mid
— You can have it all all, all, So come on, so come on, get it on.

Low
36 — You can have it all all, all, So come on, so come on, get it on.

High
— Ooh your time is com-ing, don't be late hey hey! So come on,

Mid
— don't know what you're wait-ing for, your time is com-ing, don't be late hey hey! So come

Low
39 — don't know what you're wait-ing for, your time is com-ing, don't be late hey hey! So come

High *sf* *mf*
Hey! Let me show__ ya; You're all__ that mat - ters__ to me

Mid *sf* *mf*
Hey! Let me show__ ya; You're all__ that mat - ters__ to me

Low
Let me show ya;

8
51

H CHORUS *mp*
Ooh_____ Ooh_____ Ooh_____

Mid *mf*
so come on, get it on don't know what you're wait-ing for,

Low
You're all that mat-ters to me!_____ so come on, get it on don't know what you're wait-ing for,

54

High *mf* *f* *mp*
your time is com-ing, don't be late_____ hey hey! So come on, Ooh_____ Ooh_____

Mid *mf* *f* *mf*
_____ your time is com-ing, don't be late_____ hey hey! So come on, see the light on your face

Low *f* *mf*
_____ your time is com-ing, don't be late_____ hey hey! So come on, see the light on your face

57

High
You're all that mat - ters to me

Mid
You're all that mat - ters to me

Low
You're all that mat - ters

8
69

J **OUTRO**

High
sf Hey! *mf* Let me love ya; You're all that mat - ters to me

Mid
sf Hey! *mf* Let me love ya; You're all that mat - ters to me

Low
Shine! Shine! Shine!

8
71

High
— *sf* Hey! *mf* Let me show ya;

Mid
— *sf* Hey! *mf* Let me show ya;

Low
Shine! Shine! Shine!

8
74



PARTNERS

C Instrument

Shine

- Take That -

Words and Music by Gary Barlow, Howard Donald,
Mark Owen, Stephen Robson and Jason Orange
Arranged by Mathijs Zuidema
Original Key

Moderately $\text{♩} = 90$

A VERSE 1

C Instr.

B PRE-CHORUS

C

C CHORUS

C

C

D VERSE 2

C

E PRE-CHORUS

C



PARTNERS

Bb Instrument

Shine

- Take That -

Words and Music by Gary Barlow, Howard Donald,
Mark Owen, Stephen Robson and Jason Orange
Arranged by Mathijs Zuidema
Original Key

Moderately $\text{♩} = 90$

A VERSE 1

Bb Instr.

B PRE-CHORUS

Bb

C CHORUS

Bb

Bb

D VERSE 2

Bb

E PRE-CHORUS

Bb



PARTNERS

E♭ Instrument

Shine

- Take That -

Words and Music by Gary Barlow, Howard Donald,
Mark Owen, Stephen Robson and Jason Orange
Arranged by Mathijs Zuidema
Original Key

Moderately $\text{♩} = 90$

A VERSE 1

E♭ Instr.

B PRE-CHORUS

E♭

C CHORUS

E♭

E♭

D VERSE 2

E♭

E PRE-CHORUS

E♭



PARTNERS

Piano Combo

Shine

- Take That -

Words and Music by Gary Barlow, Howard Donald,
Mark Owen, Stephen Robson and Jason Orange
Arranged by Mathijs Zuidema
Original Key

Moderately $\text{♩} = 90$

Piano Combo

mf

A VERSE 1

E_b^5 G^5

P.C.

B_b^5 A_b^5 G^5

P.C.

B PRE-CHORUS

B_b^5 A_b^5 G^5

P.C.

C^5 B_b^5 A_b^5 E_b^5/G F^{7no3} E_b B_b A_b/B_b



PARTNERS

Piano Solo Advanced

Shine

- Take That -

Words and Music by Gary Barlow, Howard Donald,
Mark Owen, Stephen Robson and Jason Orange
Arranged by Mathijs Zuidema
Original Key

Moderately ♩=90

Piano Solo Advanced

1 Eb⁵ A VERSE 1 Eb Gm

P.S. A.

5 Bbm Ab Eb Gm

P.S. A.

9 Bbm Ab B PRE-CHORUS G⁷

P.S. A.

12 Cm /Bb Ab Eb/G F⁷ Eb Bb Ab/Bb



Piano Solo Intermediate

Shine

- Take That -

PARTNERS

Words and Music by Gary Barlow, Howard Donald,
Mark Owen, Stephen Robson and Jason Orange
Arranged by Mathijs Zuidema
Original Key

Moderately $\text{♩} = 90$

Piano Solo Intermediate

A VERSE 1

P.S. I.

Bbm Ab Eb Gm

P.S. I.

Bbm Ab **B** PRE-CHORUS G7

P.S. I.

Cm /Bb Ab Eb/G F7 Eb Bb Ab/Bb



PARTNERS

Synthesizer

Shine

- Take That -

Words and Music by Gary Barlow, Howard Donald,
Mark Owen, Stephen Robson and Jason Orange
Arranged by Mathijs Zuidema
Original Key

Strings (fast)
Strings

Moderately ♩=90

A VERSE 1 **B PRE-CHORUS**

Synthesizer

Synth.

CHORUS
C

Synth.

D VERSE 2

Synth.

Guitar (Electric)

Shine

- Take That -

Words and Music by Gary Barlow, Howard Donald,
Mark Owen, Stephen Robson and Jason Orange
Arranged by Mathijs Zuidema
Original Key

Moderately ♩=90

Guitar (Electric) */w overdrive*

A VERSE 1

mf 3 3 8

B PRE-CHORUS **C CHORUS**

4 *mp* *mf*

Bb⁵ Ab/Bb Eb⁵ G⁵ C⁵ C⁵/Bb Eb⁶/Bb

Gtr. 11

Ab Eb/G F⁵ Bb Bb⁷ Eb⁵ G⁵ C⁵

Gtr. 18

D VERSE 2

f *mf*

Eb⁵

Gtr. 22

G⁵ Bb⁵ Ab⁵ Eb

Gtr. 26

G⁵ Bb⁵ Ab⁵

Gtr. 30



PARTNERS

Bass Guitar

Shine

- Take That -

Words and Music by Gary Barlow, Howard Donald,
Mark Owen, Stephen Robson and Jason Orange
Arranged by Mathijs Zuidema
Original Key

Moderately ♩=90

A VERSE 1

Bass Guitar

1 *mf*

Bass

5

Bass

8

B PRE-CHORUS

Bass

11

C CHORUS

Bass

14

Bass

17

Drums Shine

- Take That -

Words and Music by Gary Barlow, Howard Donald,
Mark Owen, Stephen Robson and Jason Orange
Arranged by Mathijs Zuidema
Original Key

Moderately $\text{♩} = 90$

Drum Set

1 *mf*

A VERSE 1

Dr.

5

Dr.

2

8

B PRE-CHORUS

Dr.

12

fill

Dr.

C CHORUS

16

Leadsheet Shine

- Take That -

Words and Music by Gary Barlow, Howard Donald,
Mark Owen, Stephen Robson and Jason Orange
Arranged by Mathijs Zuidema
Original Key

Moderately $\text{♩} = 90$

A **VERSE 1**

Eb^5 Eb Gm

1 You, you're such a big star to me, — you're ev-'ry-thing I wan-na be,

Bbm Ab Eb

5 — but you're stuck in a hole, — and I want you to get out — I don't know what there is to see,

Gm Bbm Ab

8 — but I know its time for you to leave, — we're all just push-in a-long, — try'n to fi-gure it out,

B **PRE-CHORUS**

G^7 Cm $/\text{Bb}$ Ab Eb/G

11 — out, out. All your — an - tic - i - pa - tion pulls you down, — when you can have it all.

F^7 Eb Bb Ab/Bb **C** **CHORUS** Eb G^7

14 — You can have it all — all, all, So come on, — so come on, — get it on —

Cm $\text{C}^{\flat 7}/\text{Bb}$ Eb^6/Bb Ab Eb/G F^7 Bb $\text{Ab}^{\text{add}9}/\text{Bb}$

17 — don't know what you're wait-ing for, — your time is com-ing, don't be late — hey hey! — So come



PARTNERS

Empty Paper

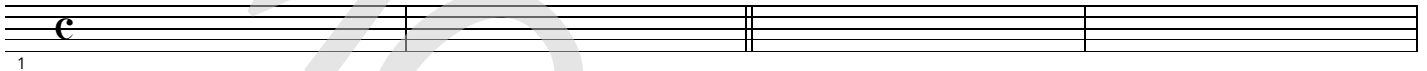
Shine

- Take That -

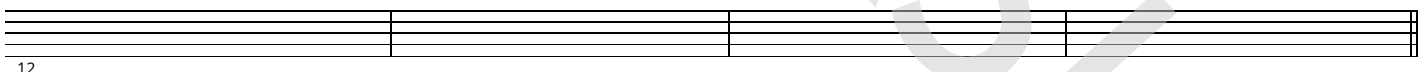
Words and Music by Gary Barlow, Howard Donald,
Mark Owen, Stephen Robson and Jason Orange
Arranged by Mathijs Zuidema
Original Key

Moderately $\text{♩} = 90$

A VERSE 1



B PRE-CHORUS



C CHORUS

