



Thinking out loud - SSAA

Pag.

02	Full score combo C instrument
12	Full score combo Bb instrument
22	Full score combo Eb instrument
32	Full score combo 4 extra staves
45	Full score small combo
57	Full score small combo 2 extra staves
75	Full score vocals (SSAA) piano advanced
90	Full score vocals (SSAA) piano moderated
105	Vocals (SSAA)
123	C instrument
125	Bb instrument
127	Eb instrument
129	Piano advanced
134	Piano moderated
139	Synthesizer
141	Guitar
144	Bassguitar
147	Drumkit
150	Percussion
153	Leadsheet (melody, lyrics, chords)
157	Empty paper
160	Lyrics



01 SSAA Combo C

Thinking out loud

- Ed Sheeran -

Words and Music by Ed Sheeran
Arranged by Hans Reintjes
Original Key D major

DEMO

VERSE

Romantic Ballad ♩ = 80

Verse 1

Soprano 1
Finger snap

Soprano 2
When your legs don't work like they used to be-fore, and I can't sweep you off of your feet. Will your mouth still re-mem-ber the

Alto 1
Used to be-fore _____ You can't sweep me off _____ your feet _____

Alto 2
Used to be-fore _____ You can't sweep me off _____ your feet _____

C Instr.

Piano Adv.
D D/F# G A D D/F# G A D D/F#

Synthesizer

Guitar
Ac. Guitar (steel)

Bass Guitar

Drum Set

Percussion
Claves

© www.ChorusOnline.com / 0031 (0) 6 - 41 57 77 56



Thinking out loud 3

01 SSAA Combo C

Pre-chorus 1

16

S1
peo - ple fall in love in mys - te - ri - ous ways, may - be just a touch of a hand well

S2
peo - ple fall in love in mys - te - ri - ous ways, may - be just a touch of a hand well

A1
I'm thin-kin' 'bout how peo - ple fall in love in mys - te - ri - ous ways, may - be just a touch of a hand well

A2
I'm thin-kin' 'bout how peo - ple fall in love in mys - te - ri - ous ways, may - be just a touch of a hand well

C

P.A.
G A Em7 A⁹ D Em7 A⁹ D

Synth

Strings

Gtr.

Bass

D. S.

Perc.

Chorus 1

21

S1
me I fall in love with you e - v'ry sin - gle day I just wan - na tell you I am Ooh

S2
me I fall in love with you e - v'ry sin - gle day I just wan - na tell you I am Ooh

A1
me I fall in love with you e - v'ry sin - gle day I just wan - na tell you I am so ho - ney now

A2
me I fall in love with you e - v'ry sin - gle day I just wan - na tell you I am Ooh

C

P.A.
Em7 A B^m Em7 A⁷ D D/F#

Synth

Gtr.

Bass

D. S.

Perc.
Cubasa

Thinking out loud 5
01 SSAA Combo C

36

S1 me-mo-ry fades and the crowds don't re-mem-ber my name, when my hands— don't play the strings the same way

S2 me-mo-ry fades and the crowds don't re-mem-ber my name, when my hands— don't play the strings the same way

A1 Your me-mo-ry fades _____ And they don't re-mem-ber your name _____ Don't play the strings the same

A2 Your me-mo-ry fades _____ And they don't re-mem-ber your name _____ Don't play the strings the same

C

P.A. G A D D/F# G A D D/F# G A

Synth

Gtr.

Bass

D. S.

Perc.

41

S1 I know you will still love me the same _____ 'cause ho-ney, your soul Could ne-ver grow Your soul could ne-ver grow old— it's

S2 I know you will still love me the same _____ 'cause ho-ney, your soul _____ could ne-ver grow old, it's e-ver-green _____

A1 way _____ 'cause ho-ney, your soul _____ could ne-ver grow old, it's e-ver-green _____

A2 way _____ 'cause ho-ney, your soul _____ Could ne-ver grow

C

P.A. D D/F# G A D D/F# G A D D/F#

Synth

Gtr.

Bass

D. S.

Perc.

Jazz Organ

Thinking out loud 7

01 SSAA Combo C

Chorus 2

56

S1
— mis - takes ho - pin' that you un - der ___ stand ___ Ooh

S2
— mis - takes ho - pin' that you un - der ___ stand ___ Ooh

A1
— mis - takes ho - pin' that you un - der ___ stand ___ so ba-by, now ___ take me in - to your lo - vin' arms

A2
— mis - takes ho - pin' that you un - der ___ stand ___ Ooh

C

P.A.
A B^m E^{m7} A⁷ D D/F# G G/A

Synth

Gtr.

Bass

D. S.

Perc. *Cubassa*

61

S1
Ooh Ooh Ooh

S2
Ooh Ooh Ooh

A1
kiss me un - der the light of a thou - sand stars ___ place your head on my bea - tin' heart ___ thin - kin'

A2
Ooh Ooh Ooh

C

P.A.
D D/F# G G/A D D/F# G G/A D D/F#

Synth

Gtr.

Bass

D. S.

Perc.

Thinking out loud 9

01 SSAA Combo C

Chorus 3

76

S1
so ba-by, now take me in - to your lo - vin' arms kiss me un - der the light of a thou -

S2
so ba-by, now take me in - to your lo - vin' arms kiss me un - der the light of a thou -

A1
so ba-by, now take me in - to your lo - vin' arms kiss me un - der the light of a thou -

A2
so ba-by, now take me in - to your lo - vin' arms kiss me un - der the light of a thou -

C

G A D D/F# G A D D/F# G A

P.A.

Synth
Jazz Organ

Ac. Guitar (steel)

Gr.

Bass

D. S.

Perc.

81

S1
- - sand stars place your head on my bea - tin' heart thin-kin' out loud, may-be we found love right

S2
- - sand stars place your head on my bea - tin' heart thin-kin' out loud, may-be we found love right

A1
- - sand stars place your head on my bea - tin' heart thin-kin' out loud, may-be we found love right

A2
- - sand stars place your head on my bea - tin' heart thin-kin' out loud, may-be we found love right

C

D D/F# G A D D/F# G A B^m A G D/F#

P.A.

Synth

Gr.

Bass

D. S.

Perc.



02 SSAA Combo Bb

Thinking out loud

- Ed Sheeran -

Words and Music by Ed Sheeran
Arranged by Hans Reintjes
Original Key D major

DEMO

VERSE

Romantic Ballad ♩ = 80

Verse 1

Soprano 1
Finger snap

Soprano 2
When your legs don't work like they used to be-fore, and I can't sweep you off of your feet. Will your mouth still re-mem-ber the

Alto 1
Used to be-fore _____ You can't sweep me off _your feet _____

Alto 2
Used to be-fore _____ You can't sweep me off _your feet _____

Bb Instr.

Piano Adv.
D D/F# G A D D/F# G A D D/F#

Synthesizer

Guitar
Ac. Guitar (steel)

Bass Guitar

Drum Set

Percussion
Claves

© www.ChorusOnline.com / 0031 (0) 6 - 41 57 77 56



Thinking out loud 3

02 SSAA Combo Bb

Pre-chorus 1

16

S1
— peo - ple fall in love in mys - te - ri - ous ways, may - be just a touch of a hand — well

S2
— peo - ple fall in love in mys - te - ri - ous ways, may - be just a touch of a hand — well

A1
I'm thin-kin' 'bout — how — peo - ple fall in love in mys - te - ri - ous ways, may - be just a touch of a hand — well

A2
I'm thin-kin' 'bout — how — peo - ple fall in love in mys - te - ri - ous ways, may - be just a touch of a hand — well

Bb

P.A.
G A Em7 A⁹ D Em7 A⁹ D

Synth

Strings

Gr.

Bass

D. S.

Perc.

Chorus 1

21

S1
me I fall in love with you e - vry sin - gle day — I just wan - na tell you I am — Ooh

S2
me I fall in love with you e - vry sin - gle day — I just wan - na tell you I am — Ooh

A1
me I fall in love with you e - vry sin - gle day — I just wan - na tell you I am — so ho - ney now

A2
me I fall in love with you e - vry sin - gle day — I just wan - na tell you I am — Ooh

Bb

P.A.
Em7 A B^m Em7 A⁷ D D/F#

Synth

Gr.

Bass

D. S.

Perc.
Cabasa

Thinking out loud 5

02 SSAA Combo Bb

36

S1 me-mo-ry fades and the crowds don't re-mem-ber my name, when my hands__ don't play the strings the same way

S2 me-mo-ry fades and the crowds don't re-mem-ber my name, when my hands__ don't play the strings the same way

A1 Your me-mo-ry fades_____ And they don't re-mem-ber your name_____ Don't play the strings the same

A2 Your me-mo-ry fades_____ And they don't re-mem-ber your name_____ Don't play the strings the same

Bb

P.A. G A D D/F# G A D D/F# G A

Synth

Gr. Bass D.S. Perc.

41

S1 I know you will still love me the same__ 'cause ho-ney, your soul Could ne-ver grow Your soul could ne-ver grow old__ it's

S2 I know you will still love me the same__ 'cause ho-ney, your soul__ could ne-ver grow old,__ it's e-ver-green__

A1 way_____ 'cause ho-ney, your soul__ could ne-ver grow old,__ it's e-ver-green__

A2 way_____ 'cause ho-ney, your soul Could ne-ver grow

Bb

P.A. D D/F# G A D D/F# G A D D/F#

Synth Jazz Organ

Gr. Bass D.S. Perc.

Thinking out loud 7

02 SSAA Combo Bb

Chorus 2

56

S1
— mis - takes ho - pin' that you un - der stand — Ooh

S2
— mis - takes ho - pin' that you un - der stand — Ooh

A1
— mis - takes ho - pin' that you un - der stand — so ba-by, now take me in - to your lo - vin' arms

A2
— mis - takes ho - pin' that you un - der stand — Ooh

Bb

P.A.
A B^m E^{m7} A⁷ D D/F# G G/A

Synth

Gr.

Bass

D. S.

Perc. *Cabasa*

61

S1
Ooh Ooh Ooh

S2
Ooh Ooh Ooh

A1
kiss me un - der the light of a thou - sand stars — place your head on my bea - tin' heart — thin - kin'

A2
Ooh Ooh Ooh

Bb

P.A.
D D/F# G G/A D D/F# G G/A D D/F#

Synth

Gr.

Bass

D. S.

Perc. *Cabasa*

Thinking out loud 9

02 SSAA Combo Bb

Chorus 3

76

S1
so ba-by, now take me in - to your lo - vin' arms kiss me un - der the light of a thou -

S2
so ba-by, now take me in - to your lo - vin' arms kiss me un - der the light of a thou -

A1
so ba-by, now take me in - to your lo - vin' arms kiss me un - der the light of a thou -

A2
so ba-by, now take me in - to your lo - vin' arms kiss me un - der the light of a thou -

Bb

P.A.
G A D D/F# G A D D/F# G A

Synth
Jazz Organ

Ac. Guitar (steel)

Grtr.
Bass
D. S.
Perc.

81

S1
- - sand stars place your head on my bea - tin' heart thinkin' out loud, may - be we found love right

S2
- - sand stars place your head on my bea - tin' heart thinkin' out loud, may - be we found love right

A1
- - sand stars place your head on my bea - tin' heart thinkin' out loud, may - be we found love right

A2
- - sand stars place your head on my bea - tin' heart thinkin' out loud, may - be we found love right

Bb

P.A.
D D/F# G A D D/F# G A B^m A G D/F#

Synth

Grtr.
Bass
D. S.
Perc.



03 SSAA Combo Eb

Thinking out loud

- Ed Sheeran -

Words and Music by Ed Sheeran
Arranged by Hans Reintjes
Original Key D major

DEMO

VERSE

Romantic Ballad ♩ = 80

Verse 1

Soprano 1
Finger snap

Soprano 2
When your legs don't work like they used to be-fore, and I can't sweep you off of your feet. Will your mouth still re-mem-ber the

Alto 1
Used to be-fore _____ You can't sweep me off _ your feet _____

Alto 2
Used to be-fore _____ You can't sweep me off _ your feet _____

Eb Instr.

Piano Adv.
D D/F# G A D D/F# G A D D/F#

Synthesizer

Guitar
Ac. Guitar (steel)

Bass Guitar

Drum Set

Percussion
Claves

© www.ChorusOnline.com / 0031 (0) 6 - 41 57 77 56

Thinking out loud 3

03 SSAA Combo Eb

Pre-chorus 1

16

S1
peo - ple fall in love in mys - te - ri - ous ways, may - be just a touch of a hand well

S2
peo - ple fall in love in mys - te - ri - ous ways, may - be just a touch of a hand well

A1
I'm thin - kin' 'bout how peo - ple fall in love in mys - te - ri - ous ways, may - be just a touch of a hand well

A2
I'm thin - kin' 'bout how peo - ple fall in love in mys - te - ri - ous ways, may - be just a touch of a hand well

Eb

P.A.
G A E^{m7} A⁹ D E^{m7} A⁹ D

Synth
Strings

Gtr.

Bass

D. S.

Perc.

Chorus 1

21

S1
me I fall in love with you e - v'ry sin - gle day I just wan - na tell you I am Ooh

S2
me I fall in love with you e - v'ry sin - gle day I just wan - na tell you I am Ooh

A1
me I fall in love with you e - v'ry sin - gle day I just wan - na tell you I am so ho - ney now

A2
me I fall in love with you e - v'ry sin - gle day I just wan - na tell you I am Ooh

Eb

P.A.
E^{m7} A B^m E^{m7} A⁷ D D/F#

Synth

Gtr.

Bass

D. S.

Perc.
Cubasa

Thinking out loud 5
03 SSAA Combo Eb

36

S1
me-mo-ry fades and the crowds don't re-mem-ber my name, when my hands ___ don't play the strings the same way

S2
me-mo-ry fades and the crowds don't re-mem-ber my name, when my hands ___ don't play the strings the same way

A1
Your me-mo-ry fades _____ And they don't re-mem-ber your name _____ Don't play the strings the same

A2
Your me-mo-ry fades _____ And they don't re-mem-ber your name _____ Don't play the strings the same

Eb

P.A.
G A D D/F# G A D D/F# G A

Synth

Gtr.

Bass

D. S.

Perc.

41

S1
I know you will still love me the same ___ 'cause ho-ney, your soul Could ne-ver grow Your soul could ne-ver grow old ___ it's

S2
I know you will still love me the same ___ 'cause ho-ney, your soul ___ could ne-ver grow old, ___ it's e-ver-green ___

A1
way ___ 'cause ho-ney, your soul ___ could ne-ver grow old, ___ it's e-ver-green ___

A2
way ___ 'cause ho-ney, your soul Could ne-ver grow

Eb

P.A.
D D/F# G A D D/F# G A D D/F#

Synth
Jazz Organ

Gtr.

Bass

D. S.

Perc.

Thinking out loud 7

03 SSAA Combo Eb

Chorus 2

56

S1
— mis - takes ho - pin' that you un - der stand — Ooh

S2
— mis - takes ho - pin' that you un - der stand — Ooh

A1
— mis - takes ho - pin' that you un - der stand — so ba - by, now take me in - to your lo - vin' arms

A2
— mis - takes ho - pin' that you un - der stand — Ooh

Eb

P.A.
A B^m E^{m7} A⁷ D D/F# G G/A

Synth

Gtr.

Bass

D. S.

Perc. Cabasa

61

S1
Ooh Ooh Ooh

S2
Ooh Ooh Ooh

A1
kiss me un - der the light of a thou - sand stars — place your head on my bea - tin' heart — thin - kin'

A2
Ooh Ooh Ooh

Eb

P.A.
D D/F# G G/A D D/F# G G/A D D/F#

Synth

Gtr.

Bass

D. S.

Perc.

Thinking out loud 9

03 SSAA Combo Eb

Chorus 3

76

S1
so ba-by, now take me in - to your lo - vin' arms kiss me un - der the light of a thou -

S2
so ba-by, now take me in - to your lo - vin' arms kiss me un - der the light of a thou -

A1
so ba-by, now take me in - to your lo - vin' arms kiss me un - der the light of a thou -

A2
so ba-by, now take me in - to your lo - vin' arms kiss me un - der the light of a thou -

Eb

P.A.
G A D D/F# G A D D/F# G A

Synth
Jazz Organ

Gr. Ac. Guitar (steel)

Bass

D. S.

Perc.

81

S1
- - sand stars place your head on my bea - tin' heart thinkin' out loud, may-be we found love right

S2
- - sand stars place your head on my bea - tin' heart thinkin' out loud, may-be we found love right

A1
- - sand stars place your head on my bea - tin' heart thinkin' out loud, may-be we found love right

A2
- - sand stars place your head on my bea - tin' heart thinkin' out loud, may-be we found love right

Eb

P.A.
D D/F# G A D D/F# G A B^m A G D/F#

Synth

Gr.

Bass

D. S.

Perc.

04 SSAA 4 extra staves

Thinking out loud

- Ed Sheeran -

Words and Music by Ed Sheeran
Arranged by Hans Reintjes
Original Key D major

Romantic Ballad $\text{♩} = 80$

Verse 1

Finger snap

Soprano 1

Soprano 2

Alto 1

Alto 2

1

2

3

4

Piano Adv.

Synthesizer

Guitar

Bass Guitar

Drum Set

Percussion

Ac. Guitar (steel)

Claves

D D/F# G A D D/F# G A D D/F# G A D

When your legs don't work like they used to be-fore, and I can't sweep you off of your feet. Will your mouth still re-main her the taste of my love, will your eyes still smile from you

Used to be-fore _____ You can't sweep me off _ your feet _____ Taste of my love _____

Used to be-fore _____ You can't sweep me off _ your feet _____ Taste of my love _____

Pre-chorus 1

1/5

S1 at tven - ty — three — peo - ple fall in love in mys - te — ri - ous ways, may - be just a touch of a hand — well me I fall in love with you e -

S2 — peo - ple fall in love in mys - te — ri - ous ways, may - be just a touch of a hand — well me I fall in love with you e -

A1 — I'm thin-kin' 'bout — how — peo - ple fall in love in mys - te — ri - ous ways, may - be just a touch of a hand — well me I fall in love with you e -

A2 I'm thin-kin' 'bout — how — peo - ple fall in love in mys - te — ri - ous ways, may - be just a touch of a hand — well me I fall in love with you e -

1
2
3
4

P/A D D/F# G A Em7 A9 D Em7 A9 D Em7

Synth

Gtr. 8

Bass

D. S.

Perc.

Strings

Thinking out loud 5

04 SS/AA 4 extra staves

Verse 2

29

S1 Ooh _____

S2 Ooh _____

A1 Ooh _____

A2 Ooh _____

1

2

3

4

D D/F# G G/A D D/F# G G/A Bm A G D/F# Em7 A D D D/F#

place your head on my bea-tin' heart _____

thin-kin' out _____ loud _____

may-be we found love right where we are _____

may-be we found love right where we are _____

may-be we found love right where we are _____

may-be we found love right where we are _____

When my hair's all but gone and my

When my hair's all but gone and my

When my hair's all but gone and my

When my hair's all but gone and my

Perc. Triangles Congas

Synth

Bass

Gtr. 8

D. S.

P.A.

4/3

S1 soul Could ne - ver grow Your soul could ne - ver grow old — It's e - ver green and, ba - by your smile In my mind In me - mo - ry

S2 soul — could ne - ver grow old — It's e - ver - green — and, ba - by your smile for - e - ver in — my mind In me - mo - ry

A1 soul — could ne - ver grow old — It's e - ver - green — and, ba - by your smile for - e - ver in — my mind In me - mo - ry

A2 soul Could ne - ver grow and, ba - by your smile In my mind

1
2
3
4

P/A D D/F# G A D D/F# G A D D/F# G A D D/F#

Synth Jazz Organ

Gtr. 8

Bass

D. S.

Perc.

Chorus 2

57

S1 ho-pin' that you un-der _ stand _ Ooh _

S2 ho-pin' that you un-der _ stand _ Ooh _

A1 ho-pin' that you un-der _ stand _ so baby now _ Take me in - 'to your lo-ve' arms _ Kiss me un-der the light of a thou - sand stars _

A2 ho-pin' that you un-der _ stand _ Ooh _

1

2

3

4

Em7 A7 D D/F# G G/A D D/F# G G/A D D/F#

Synth

Gtr. 8

Bass

D. S.

Perc. *Cubassa*

85

S1 we found love right where we are ba-by Ooh _____ where we are _____

S2 we found love right where we are ba-by Ooh _____ where we are _____

A1 we found love right where we are ba-by and we found love right where we are _____

A2 we found love right where we are ba-by and we found love right where we are _____

1

2

3

4

P/A Bm A G D/F# Em7 A D Bm A G D/F# Em7 A D Bm A G D/F# Em7 A D

Gtr. 8

Bass

D.S.

Perc. Triangle



05 SSAA small Combo

Thinking out loud

- Ed Sheeran -

Words and Music by Ed Sheeran
Arranged by Hans Reintjes
Original Key D major

DEMO

DEMO

Romantic Ballad ♩ = 80

Verse 1

Soprano 1
Finger snap

Soprano 2
When your legs don't work like they used to be-fore, and I can't sweep you off of your feet.

Alto 1
Used to be-fore _____ You can't sweep me off _ your feet _____

Alto 2
Used to be-fore _____ You can't sweep me off _ your feet _____

Piano Adv.
D D/F# G A D D/F# G A

Guitar
Ac. Guitar (steel)

Bass Guitar

Drum Set

Percussion
Claves

© www.ChorusOnline.com / 0031 (0) 6 - 41 57 77 56

Thinking out loud 3
05 SSAA small Combo

13

S1 I could fall hard at twenty-three

S2 heart could still fall as hard at twenty-three

A1 heart could still fall as hard at twenty-three I'm thin-kin' 'bout how

A2 I could fall hard I'm thin-kin' 'bout how

P.A. D D/F# G A D D/F# G A

Gtr.

Bass

D. S.

Perc.

Pre-chorus 1

17

S1 peo - ple fall in love in mys - te - ri - ous ways, may - be just a touch of a hand well

S2 peo - ple fall in love in mys - te - ri - ous ways, may - be just a touch of a hand well

A1 peo - ple fall in love in mys - te - ri - ous ways, may - be just a touch of a hand well

A2 peo - ple fall in love in mys - te - ri - ous ways, may - be just a touch of a hand well

P.A. E m7 A⁹ D E m7 A⁹ D

Gtr.

Bass

D. S.

Perc.

29

S1 Ooh _____ Ooh _____ may-be

S2 Ooh _____ Ooh _____ may-be

A1 sand stars _____ place your head on my bea-tin' heart _____ thin-kin' out _____ loud, _ may-be

A2 Ooh _____ Ooh _____ may-be

P.A. D D/F# G G/A D D/F# G G/A

Gtr.

Bass

D. S.

Perc.

Verse 2

33

S1 we found love right where we are _ When my hair's all but gone and my me - mo - ry fades

S2 we found love right where we are _ When my hair's all but gone and my me - mo - ry fades

A1 we found love right where we are _ Your me - mo - ry fades

A2 we found love right where we are _ Your me - mo - ry fades

P.A. B^m A G D/F# E^{m7} A D D D/F# G A

Gtr.

Bass

D. S.

Perc. Triangle Conga's

45

S1 Your soul could ne-ver grow old— it's e-ver green and, ba-by your smile in my mind

S2 — and, ba-by your smile, for - e-ver in — my mind in me-mo-ry

A1 — and, ba-by your smile, for - e-ver in — my mind in me-mo-ry

A2 — and, ba-by your smile in my mind

P.A. D D/F# G A D D/F# G A

Gtr.

Bass

D. S.

Perc.

Pre-chorus 2

49

S1 in me - mo - ry — how — peo - ple fall in love in mys - te - ri - ous ways,

S2 — how — peo - ple fall in love in mys - te - ri - ous ways,

A1 — I'm thin-kin' 'bout how — peo - ple fall in love in mys - te - ri - ous ways,

A2 — I'm thin-kin' 'bout how — peo - ple fall in love in mys - te - ri - ous ways,

P.A. D D/F# G A E^{m7} A⁹ D

Gtr.

Bass

D. S.

Perc.

Thinking out loud 9
05 SSAA small Combo

61

S1 Ooh Ooh

S2 Ooh Ooh

A1 kiss me un-der the light of a thou - sand stars place your head on my bea-tin' heart

A2 Ooh Ooh

P.A. D D/F# G G/A D D/F# G G/A

Gtr.

Bass

D. S.

Perc.

65

S1 Ooh may-be we found love right where we are

S2 Ooh may-be we found love right where we are

A1 thin-kin' out loud, may-be we found love right where we are

A2 Ooh may-be we found love right where we are

P.A. D D/F# G G/A B^m A G D/F# E^{m7} A D

Gtr. distortion

Bass

D. S.

Perc. Triangle

Chorus 3

77

S1 take me in - to your lo - vin' arms

S2 take me in - to your lo - vin' arms

A1 take me in - to your lo - vin' arms

A2 take me in - to your lo - vin' arms

P.A. D D/F# G A D D/F#

Gtr.

Bass

D. S.

Perc.

80

S1 kiss me un - der the light of a thou - sand stars place your head on my bea - tin' heart

S2 kiss me un - der the light of a thou - sand stars place your head on my bea - tin' heart

A1 kiss me un - der the light of a thou - sand stars place your head on my bea - tin' heart

A2 kiss me un - der the light of a thou - sand stars place your head on my bea - tin' heart

P.A. G A D D/F# G A

Gtr.

Bass

D. S.

Perc.

11

S1 I will be lo-ving' you un - til we're se-ven - ty and ba-by my I could fall hard - at twen - ty - three

S2 — — — — — and ba-by my heart - could still fall as hard - at twenty - three

A1 — — — — — and ba-by my heart - could still fall as hard - at twenty - three

A2 — — — — — and ba-by my I could fall hard -

1

2

D D/F# G A D D/F# G A D D/F#

PA

Gtr.

Bass

D. S.

Perc.

Chorus 1

21

S1 me | fall in love with you e - v'ry sin - gle day — I just wan - na — tell you | am —

S2 me | fall in love with you e - v'ry sin - gle day — I just wan - na — tell you | am —

A1 me | fall in love with you e - v'ry sin - gle day — I just wan - na — tell you | am —

A2 me | fall in love with you e - v'ry sin - gle day — I just wan - na — tell you | am —

so ho - ney now —

Ooh —

Ooh —

Ooh —

Gtr. Em7 A Bm Em7 A7 D D/F#

D.S.

Perc. *Cabasa*

Thinking out loud 7
06 SSA small Combo extra staves

Verse 2

31

S1 Ooh _____ maybe we found love right where we are _____

S2 Ooh _____ maybe we found love right where we are _____

A1 thin-kin' out _____ loud, _____ maybe we found love right where we are _____

A2 Ooh _____ maybe we found love right where we are _____

1

2

D D/F# G G/A Bm A G D/F# Em7 A D D D/F#

PA

Gtr.

Bass

D. S.

Perc. Triangle Conga's

4/4

S1 I know you will still love me the same — 'cause ho-ney, your soul Could ne - ver grow Your soul could ne-ver grow old — it's

S2 I know you will still love me the same — 'cause ho-ney, your soul could ne-ver grow old — it's e-ver-green —

A1 way — 'cause ho-ney, your soul — could ne-ver grow old — it's e-ver-green —

A2 way — 'cause ho-ney, your soul Could ne - ver grow

1

2

PA D D/F# G A D D/F# G A A D D/F#

Gtr. 8

Bass

D. S.

Perc.

Pre-chorus 2

51

S1 peo - ple fall in love in mys - te - ri - ous ways, may - be it's all part of a plan — well I'll just keep on ma - kin' the same

S2 peo - ple fall in love in mys - te - ri - ous ways, may - be it's all part of a plan — well I'll just keep on ma - kin' the same

A1 peo - ple fall in love in mys - te - ri - ous ways, may - be it's all part of a plan — well I'll just keep on ma - kin' the same

A2 peo - ple fall in love in mys - te - ri - ous ways, may - be it's all part of a plan — well I'll just keep on ma - kin' the same

1

2

PA

E m7 A⁹ D E m7 A⁹ D E m7

Gtr. 8

Bass

D. S.

Perc.

Sheet music for "Thinking out Loud 13" (06 SSAA small Combo extra staves). The score includes parts for Soprano 1 (S1), Soprano 2 (S2), Alto 1 (A1), Alto 2 (A2), Piano (P), Bass, Double Bass (D.S.), and Percussion (Perc.).

The lyrics are: "kiss me un-der the light of a thou - sand stars - place your head on my bea-tin' heart - thin-kin'".

The guitar part (Gtr.) includes the following chord progression: D, D/F#, G, G/A, D, D, D/F#, G, G/A, D, D/F#.

The piano part (P) features a rhythmic accompaniment with accents (>) and a dynamic marking of 8.

The vocal parts (S1, S2, A1, A2) include melodic lines with lyrics and "Ooh" vocalizations. The S1 part has a first ending bracketed with a "1" above it.

71

S1
la la la la la la la la la la
Ooh

S2
Ooh

A1
Ooh

A2
Ooh

Gtr.
D D/F# G A D D/F# G A D D/F#

Bass

D.S.

Perc.

1
2

81

S1 - - sand stars - - place your head on my bea-tin' heart - - thinkin' out - - loud, may-be we found love right

S2 - - sand stars - - place your head on my bea-tin' heart - - thinkin' out - - loud, may-be we found love right

A1 - - sand stars - - place your head on my bea-tin' heart - - thinkin' out - - loud, may-be we found love right

A2 - - sand stars - - place your head on my bea-tin' heart - - thinkin' out - - loud, may-be we found love right

1

2

PA

D D/F# G A D D/F# G A B^m A G D/F#

Gtr. 8

Bass

D. S.

Perc.



07 SSAA Piano Advanced

Thinking out loud

- Ed Sheeran -

Words and Music by Ed Sheeran
Arranged by Hans Reintjes
Original Key D major

DEMO

VERSES

Romantic Ballad ♩ = 80
Verse 1

Soprano 1
Finger snap

Soprano 2
When your legs don't work like they used to be-fore, and I can't sweep you off of your

Alto 1
Used to be-fore _____

Alto 2
Used to be-fore _____

D D/F# G A D D/F#

Piano Adv.

© www.ChorusOnline.com / 0031 (0) 6 - 41 57 77 56

10

S1
til we're I will be lo-vin' you un - til we're se-ven-ty and ba-by my

S2
'till we're se-ven-ty and ba-by my

A1
'till we're se-ven-ty and ba-by my

A2
til we're and ba-by my

G A D D/F# G A

P.A

13

S1
I could fall hard at twen - ty three

S2
heart could still fall as hard at twen-ty - three

A1
heart could still fall as hard at twen-ty - three

A2
I could fall hard

D D/F# G A D D/F#

P.A

22

S1
v'ry sin - gle day ___ I just wan - na ___ tell you I am ___

S2
v'ry sin - gle day ___ I just wan - na ___ tell you I am ___

A1
v'ry sin - gle day ___ I just wan - na ___ tell you I am ___ so ho - ney now

A2
v'ry sin - gle day ___ I just wan - na ___ tell you I am ___

A
B^m E^{m7} A⁷

P.A

Chorus 1

25

S1
Ooh _____ Ooh _____

S2
Ooh _____ Ooh _____

A1
take me in - to your lo - vin' arms _____

A2
Ooh _____ Ooh _____

D D/F# G G/A D D/F#

P.A

Verse 2

34

S1 where we are — When my hair's all but gone and my me - mo - ry fades

S2 where we are — When my hair's all but gone and my me - mo - ry fades

A1 where we are — Your me - mo - ry fades

A2 where we are — Your me - mo - ry fades

P.A. E^{m7} A D D D/F# G A

37

S1 and the crowds don't re - mem - ber my name, when my hands — don't

S2 and the crowds don't re - mem - ber my name, when my hands — don't

A1 — And they don't re mem - ber your name —

A2 — And they don't re - mem - ber your name —

P.A. D D/F# G A D D/F#

46

S1 e - ver green and, ba - by your smile in my mind

S2 and, ba - by your smile, for - e - ver in my mind in me - mo - ry

A1 and, ba - by your smile, for - e - ver in my mind in me - mo - ry

A2 and, ba - by your smile in my mind

G A D D/F# G A

P.A

Pre-chorus 2

49

S1 in me - mo - ry how peo - ple fall in love in mys - te

S2 how peo - ple fall in love in mys - te

A1 I'm thin-kin' 'bout how peo - ple fall in love in mys - te

A2 I'm thin-kin' 'bout how peo - ple fall in love in mys - te

D D/F# G A E m7

P.A

Chorus 2

58

S1
Ooh _____

S2
Ooh _____

A1
so ba-by, now _____ take me in - to your lo - vin' arms

A2
Ooh _____

P.A
A⁷ D D/F# G G/A

61

S1
Ooh _____ Ooh _____

S2
Ooh _____ Ooh _____

A1
kiss me un - der the light of a thou - sand stars

A2
Ooh _____ Ooh _____

P.A
D D/F# G G/A D D/F#

71

S1
la la la la la la la la la la la la la la ___ Ooh _____ Ooh ___

S2
Ooh _____ Ooh _____ Ooh ___

A1
Ooh _____

A2
Ooh _____ Ooh _____

P.A
D D/F# G A D D/F# G A

Chorus 3

75

S1
so ba-by, now _____

S2
so ba-by, now _____

A1
Ooh _____ so ba-by, now _____

A2
so ba-by, now _____

P.A
D D/F# G A D D/F#

84

S1
out _____ loud, _____ may-be we found love right where we are _____ ba - by

S2
out _____ loud, _____ may-be we found love right where we are _____ ba - by

A1
out _____ loud, _____ may-be we found love right where we are _____ ba - by

A2
out _____ loud, _____ may-be we found love right where we are _____ ba - by

P.A
G A B^m A G D/F# E^{m7} A D

87

S1
Ooh _____ where we are _____ Ooh _____ where we _____ are

S2
Ooh _____ where we are _____ Ooh _____ where we _____ are

A1
we found love right where we are _____ and we found love right where we _____ are

A2
we found love right where we are _____ and we found love right where we _____ are

P.A
B^m A G D/F# E^{m7} A D B^m A G D/F# E^{m7} A D



08 SSAA Piano Moderated

Thinking out loud

- Ed Sheeran -

Words and Music by Ed Sheeran
Arranged by Hans Reintjes
Original Key D major

DEMO

VERS

ON

Romantic Ballad ♩ = 80
Verse 1

Soprano 1
Finger snap

Soprano 2
When your legs don't work like they used to be-fore, and I can't sweep you off of your

Alto 1
Used to be-fore _____

Alto 2
Used to be-fore _____

Piano Mod.
D D/F# G A D D/F#

© www.ChorusOnline.com / 0031 (0) 6 - 41 57 77 56



Thinking out loud 3
08 SSAA Piano Moderated

10

S1
til we're I will be lo-vin' you un - til we're se-ven-ty and ba-by my

S2
'till we're se-ven-ty and ba-by my

A1
'till we're se-ven-ty and ba-by my

A2
til we're and ba-by my

P.M
G A D D/F# G A

13

S1
I could fall hard at twen - ty three

S2
heart could still fall as hard at twen-ty - three

A1
heart could still fall as hard at twen-ty - three

A2
I could fall hard

P.M
D D/F# G A D D/F#

22

S1
v'ry sin - gle day ___ I just wan - na ___ tell you I am ___

S2
v'ry sin - gle day ___ I just wan - na ___ tell you I am ___

A1
v'ry sin - gle day ___ I just wan - na ___ tell you I am ___ so ho - ney now

A2
v'ry sin - gle day ___ I just wan - na ___ tell you I am ___

P. M
A B^m E^{m7} A⁷

Chorus 1

25

S1
Ooh _____ Ooh _____

S2
Ooh _____ Ooh _____

A1
take me in - to your lo - vin' arms _____

A2
Ooh _____ Ooh _____

P. M
D D/F# G G/A D D/F#

Verse 2

34

S1
where we are _ When my hair's all but gone and my me - mo - ry fades

S2
where we are _ When my hair's all but gone and my me - mo - ry fades

A1
where we are _ Your me - mo - ry fades

A2
where we are _ Your me - mo - ry fades

P.M
E^{m7} A D D D/F# G A

37

S1
and the crowds don't re - mem - ber my name, when my hands ___ don't

S2
and the crowds don't re - mem - ber my name, when my hands ___ don't

A1
_____ And they don't re mem - ber your name _____

A2
_____ And they don't re - mem - ber your name _____

P.M
D D/F# G A D D/F#

46

S1 e - ver green and, ba - by your smile in my mind

S2 and, ba - by your smile, for - e - ver in my mind in me - mo - ry

A1 and, ba - by your smile, for - e - ver in my mind in me - mo - ry

A2 and, ba - by your smile in my mind

P. M. G A D D/F# G A

Pre-chorus 2

49

S1 in me - mo - ry how peo - ple fall in love in mys - te

S2 how peo - ple fall in love in mys - te

A1 I'm thin-kin' 'bout how peo - ple fall in love in mys - te

A2 I'm thin-kin' 'bout how peo - ple fall in love in mys - te

P. M. D D/F# G A E^{m7}

Chorus 2

58

S1
Ooh

S2
Ooh

A1
so ba-by, now take me in - to your lo - vin' arms

A2
Ooh

P.M
A⁷ D D/F# G G/A

61

S1
Ooh

S2
Ooh

A1
kiss me un - der the light of a thou - sand stars

A2
Ooh

P.M
D D/F# G G/A D D/F#

71

S1
la la la la la la la la la la la la la la la la Ooh Ooh

S2
Ooh Ooh Ooh

A1
Ooh

A2
Ooh Ooh

P.M
D D/F# G A D D/F# G A

Chorus 3

75

S1
so ba-by, now

S2
so ba-by, now

A1
Ooh so ba-by, now

A2
so ba-by, now

P.M
D D/F# G A D D/F#

Thinking out loud 15
08 SSAA Piano Moderated

84

S1
out loud, may-be we found love right where we are ba-by

S2
out loud, may-be we found love right where we are ba-by

A1
out loud, may-be we found love right where we are ba-by

A2
out loud, may-be we found love right where we are ba-by

P. M
G A B^m A G D/F# E^{m7} A D

87

S1
Ooh where we are Ooh where we are

S2
Ooh where we are Ooh where we are

A1
we found love right where we are and we found love right where we are

A2
we found love right where we are and we found love right where we are

P. M
B^m A G D/F# E^{m7} A D B^m A G D/F# E^{m7} A D



09 SSAA

Thinking out loud

- Ed Sheeran -

Words and Music by Ed Sheeran
Arranged by Hans Reintjes
Original Key D major

Romantic Ballad ♩ = 80

Verse 1

Soprano 1

Finger snap

Soprano 2

When your legs don't work like they used to be-fore,

Alto 1

Used to be-fore

Alto 2

Used to be-fore

© www.ChorusOnline.com / 0031 (0) 6 - 41 57 77 56

7

S1 and dar-lin' I will Un-

S2 will your eyes still smile from you cheeks? and dar-lin' I will ___ be lo-vin' you

A1 and dar-lin' I will ___ be lo-vin' you

A2 and dar-lin' I will Un-

10

S1 til we're ___ I will be lo-vin' you un -

S2 'till ___ we're se-ven-ty ___

A1 'till ___ we're se-ven-ty ___

A2 til we're ___

Pre-chorus 1

17

S1
peo-ple fall in love in mys-te____ ri-ous ways, may-be just a__ touch of a hand

S2
peo-ple fall in love in mys-te____ ri-ous ways, may-be just a__ touch of a hand

A1
peo-ple fall in love in mys-te____ ri-ous ways, may-be just a__ touch of a hand

A2
peo-ple fall in love in mys-te____ ri-ous ways, may-be just a__ touch of a hand

20

S1
— well me I fall in love with you e - v'ry sin-gle day —

S2
— well me I fall in love with you e - v'ry sin-gle day —

A1
— well me I fall in love with you e - v'ry sin-gle day —

A2
— well me I fall in love with you e - v'ry sin-gle day —

28

S1

S2

A1

A2

Ooh

Ooh

kiss me un - der the light of a thou - sand stars

Ooh

30

S1

S2

A1

A2

Ooh

Ooh

place your head on my bea - tin' heart thin-kin'

Ooh

45

S1
Your soul could ne-ver grow old— it's e-ver green and, ba-by your

S2
— and, ba-by your

A1
— and, ba-by your

A2
— and, ba-by your

47

S1
smile in my mind in me - mo - ry

S2
smile, for - e-ver in — my mind in me-mo-ry —

A1
smile, for - e-ver in — my mind in me-mo-ry —

A2
smile in my mind

56

S1
— mis-takes ho-pin' that you un-der stand —

S2
— mis-takes ho-pin' that you un-der stand —

A1
— mis-takes ho-pin' that you un-der stand — so ba-by, now

A2
— mis-takes ho-pin' that you un-der stand —

Chorus 2

59

S1
Ooh _____ Ooh _____

S2
Ooh _____ Ooh _____

A1
take me in - to your lo-vin' arms _____

A2
Ooh _____ Ooh _____

Interlude

66

S1
— may-be we found love right where we are —

S2
— may-be we found love right where we are — Ooh —

A1
out — loud, may-be we found love right where we are —

A2
— may-be we found love right where we are —

70

S1
la la la la la la la la la la la — Ooh —

S2
— Ooh — Ooh —

A1
— Ooh —

A2
— Ooh —

80

S1
kiss me un - der the light of a thou - sand stars

S2
kiss me un - der the light of a thou - sand stars _____

A1
kiss me un - der the light of a thou - sand stars

A2
kiss me un - der the light of a thou - sand stars

82

S1
place your head on my bea - tin' heart _____ thin-kin'

S2
place your head on my bea - tin' heart _____ thin-kin'

A1
place your head on my bea - tin' heart _____ thin-kin'

A2
place your head on my bea - tin' heart _____ thin-kin'



10 C Instrument

Thinking out loud

- Ed Sheeran -

Words and Music by Ed Sheeran
Arranged by Hans Reintjes
Original Key D major

Romantic Ballad ♩ = 80

Verse 1



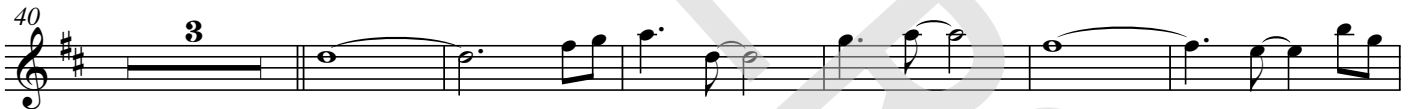
Pre-chorus 1



Chorus 1



Verse 2



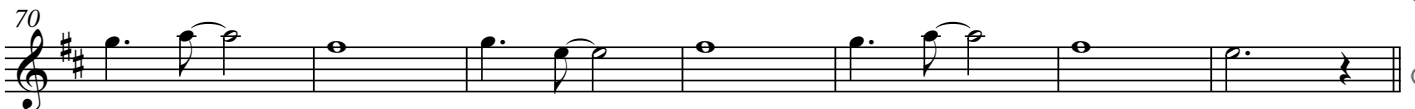
Pre-chorus 2



Chorus 2



Interlude



11 Bb Instrument

chorus[®]
online

Thinking out loud

- Ed Sheeran -

Words and Music by Ed Sheeran
Arranged by Hans Reintjes
Original Key D major

Romantic Ballad ♩ = 80

Verse 1





12 Eb Instrument

Thinking out loud

- Ed Sheeran -

Words and Music by Ed Sheeran
Arranged by Hans Reintjes
Original Key D major

Romantic Ballad ♩ = 80

Verse 1



Pre-chorus 1



Chorus 1



Verse 2



Pre-chorus 2



Chorus 2



Interlude



© www.ChorusOnline.com / 0031 (0) 6 - 41 57 77 56

Thinking out loud

- Ed Sheeran -

Words and Music by Ed Sheeran
Arranged by Hans Reintjes
Original Key D major

Romantic Ballad ♩ = 80

Verse 1

D D/F# G A D D/F# G A

Musical notation for measures 1-4 of the piano arrangement. The score is in D major (two sharps) and 4/4 time. The right hand features a melodic line with eighth and quarter notes, while the left hand provides a steady accompaniment with quarter notes and chords.

D D/F# G A D D/F# G A D D/F#

Musical notation for measures 5-8 of the piano arrangement. Measure 5 is marked with a '5'. The notation continues with the same melodic and accompaniment patterns as the first system.

G A D D/F# G A D D/F#

Musical notation for measures 9-12 of the piano arrangement. Measure 10 is marked with a '10'. The notation continues with the same melodic and accompaniment patterns.

G A D D/F# G A E^{m7}

Musical notation for measures 13-16 of the piano arrangement. Measure 14 is marked with a '14'. The notation concludes with the same melodic and accompaniment patterns.

Pre-chorus 1



14 Piano Moderated

Thinking out loud

- Ed Sheeran -

Words and Music by Ed Sheeran
Arranged by Hans Reintjes
Original Key D major

Romantic Ballad ♩ = 80

Verse 1

D D/F# G A D D/F# G A D D/F#

G A D D/F# G A D D/F# G A

D D/F# G A D D/F# G A

Pre-chorus 1

D D/F# G A E^{m7} A⁹ D E^{m7}

© www.ChorusOnline.com / 0031 (0) 6 - 41 57 77 56



15 Synthesizer

Thinking out loud

- Ed Sheeran -

Words and Music by Ed Sheeran
Arranged by Hans Reintjes
Original Key D major

Romantic Ballad ♩ = 80

Verse 1

8 *Jazz Organ*

Pre-chorus 1

14 *Strings*

19

Chorus 1

24

Verse 2

32 *Jazz Organ*

Thinking out loud

- Ed Sheeran -

Words and Music by Ed Sheeran
Arranged by Hans Reintjes
Original Key D major

Romantic Ballad ♩ = 80

Verse 1

Ac. Guitar (steel)

D D/F# G A D D/F# G A



D D/F# G A D D/F# G A



D D/F# G A D D/F# G A



D D/F# G A D D/F# G A



Pre-chorus 1

E^{m7} A⁹ D E^{m7} A⁹ D



E^{m7} A B^m E^{m7} A⁷



Chorus 1

D D/F# G G/A D D/F# G G/A



Thinking out loud

- Ed Sheeran -

Words and Music by Ed Sheeran
 Arranged by Hans Reintjes
 Original Key D major



Romantic Ballad ♩ = 80

Verse 1

D D/F# G A D D/F#

8

G A D D/F# G A D D/F#

12

Pre-chorus 1

G A E^{m7} A⁹ D E^{m7}

16

A⁹ D E^{m7} A B^m E^{m7}

20

Chorus 1

A⁷ D D/F# G G/A D D/F#

24

G G/A D D/F# G G/A D D/F#

28

Verse 2

G G/A B^m A G D/F# E^{m7} A D D D/F#

32

Drumkit/Percussion

High Tom
 Hi-Hat closed
 Hi-Hat open
 Mid Tom
 Low Tom
 Ride Cymbal
 Crash Cymbal
 Shareclick
 Floor Tom
 Ride Bell/Cup
 Splash Cymbal
 Triangle mute
 Bassdrum (Kick)
 Snaredrum
 Hi-Hat Foot
 Tambourine Beating
 Triangle open

Shaker (eggs)
 Claves
 High Timbale
 Sleigh Bells
 Bell Tree
 Maracas
 Wind Chimes
 Handclap
 Guro
 Woodblock High
 Timbale Low
 Agogo High
 Cowbell
 Conga
 Cabasa
 Woodblock Low
 Agogo Low



18 Drum Set

Thinking out loud

- Ed Sheeran -

Words and Music by Ed Sheeran
Arranged by Hans Reintjes
Original Key D major

Romantic Ballad ♩ = 80

Verse 1

9

Pre-chorus 1

13

Chorus 1

24

27

Verse 2

33

37

Drumkit/Percussion

Hi-Hat closed
Hi-Hat open
Shareclick
Bassdrum (Kick)
Snaredrum
Hi-Hat Foot
High Tom
Mid Tom
Low Tom
Floor Tom
Ride Cymbal
Ride Bell/Cup
Crash Cymbal
Splash Cymbal
Tambourine Beating
Triangle mute

- Shaker (eggs)
- Claves
- High Timbale
- Sleigh Bells
- Bell Tree
- Maracas
- Wind Chimes

Cowbell
Handclap
Conga Cabasa
Guro
Woodblock High
Woodblock Low
Timbale Low
Agogo High
Agogo Low

Thinking out loud

- Ed Sheeran -

Words and Music by Ed Sheeran
Arranged by Hans Reintjes
Original Key D major

Romantic Ballad ♩ = 80

Verse 1
Claves

9 Conga's

Pre-chorus 1

Chorus 1

Verse 2

Thinking out loud

- Ed Sheeran -

Words and Music by Ed Sheeran
 Arranged by Hans Reintjes
 Original Key D major

Romantic Ballad ♩ = 80

Verse 1

D D/F# G A



When your legs don't work like they used to be-fore,

D D/F# G A D D/F#



and I can't sweep you off of your feet.

Will your mouth still re-mem-ber the

G A D D/F# G A



taste of my love,

will your eyes still smile from your cheeks?

and dar-lin' I

D D/F# G A D D/F# G A



will ___ be lo-vin' you

'till ___ we're se-ven-ty ___

and ba-by my

D D/F# G A D D/F#



heart ___ could still fall as

hard ___ at twen-ty - three ___

Pre-chorus 1

G A E^{m7} A D



I'm thin-kin' 'bout how ___ peo-ple fall in love in mys-te-ri-ous ways,



21 Empty Paper

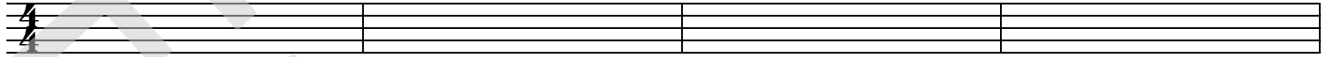
Thinking out loud

- Ed Sheeran -

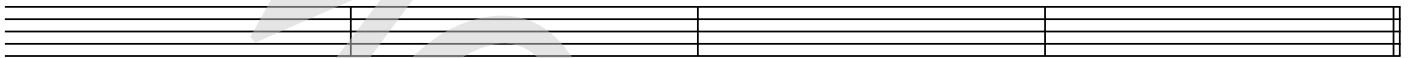
Words and Music by Ed Sheeran
Arranged by Hans Reintjes
Original Key D major

Romantic Ballad $\text{♩} = 80$

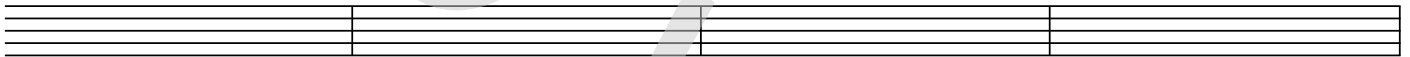
Verse 1



5



9

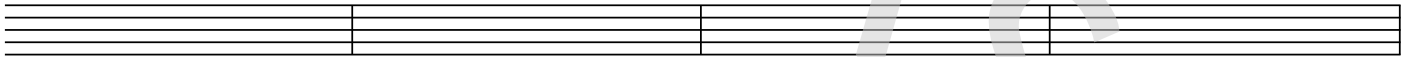


13

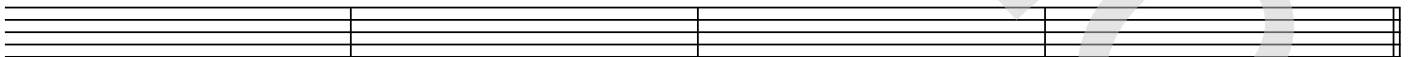


Pre-chorus 1

17

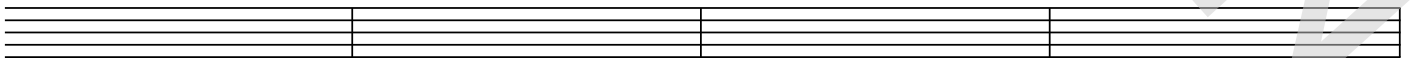


21

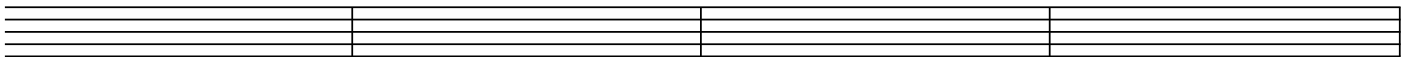


Chorus 1

25



29



© www.ChorusOnline.com / 0031 (0) 6 - 41 57 77 56



22 Lyrics

Thinking out loud

- Ed Sheeran -

*Words and Music by Ed Sheeran
Arranged by Hans Reintjes
Original Key D major*

Verse 1

When your legs don't work like they used to before
And I can't sweep you off of your feet
Will your mouth still remember the taste of my love?
Will your eyes still smile from your cheeks?

Verse 1a

And, darlin', I will be lovin' you 'ntill we're seventy
And, baby, my heart could still fall as hard at twentythree
I'm thinkin' 'bout how people fall in love in mysterious ways
Maybe just a touch of a hand
Well, me I fall in love with you ev'ry single day
I just wanna tell you I am

Chorus 1

So honey now, take me into your lovin' arms
Kiss me under the light of a thousand stars
Place your head on my beatin' heart
I'm thinking out loud
Maybe we found love right where we are

Verse 2

When my hair's all but gone and my memory fades
And the crowds don't remember my name
When my hands don't play the strings the same way
I know you will still love me the same

Verse 2a

'Cause honey your soul could never grow old, it's evergreen
And, baby, your smile's forever in my mind and memory
I'm thinking 'bout how people fall in love in mysterious ways
Maybe it's all part of a plan
Well, I'll just keep on making the same mistakes
Hoping that you'll understand

Chorus 1

But, baby, now. Take me into your loving arms
Kiss me under the light of a thousand stars
Place your head on my beating heart
Thinking out loud
That maybe we found love right where we are

Chorus 3

So, baby, now. Take me into your loving arms
Kiss me under the light of a thousand stars
Oh, darling, place your head on my beating heart
I'm thinking out loud
That maybe we found love right where we are