

APT. - Chorus-LIGHT (SAB)

Pag.

02	Full score combo C instrument
15	Full score combo Bb instrument
28	Full score combo Eb instrument
41	Full score combo 4 extra staves
58	Full score small combo
71	Full score small combo 2 extra staves
88	Full score Vocals (High-Mid-Low) Piano Advanced
101	Full score Vocals (High-Mid-Low) Piano Intermediate
114	Vocals (High-Mid-Low)
123	C instrument
125	Bb instrument
127	Eb instrument
129	Piano Combo
133	Piano Solo Advanced
137	Piano Solo Intermediate
141	Synthesizer
144	Guitar
147	Bass guitar
149	Drumkit
152	Percussion
154	Leadsheet
158	Lyrics



Chorus-LIGHT(SAB) Combo C

APT.

- ROSÉ & Bruno Mars -

Words and Music By Philip Lawrence II, Peter Gene Hernandez, Henry Walter, Christopher Brody Brown, Chae Young Park, Nicholas Chinn, Theron Thomas, Rogét Chahayed, Omer Fedi, Michael Chapman, Amy Allen
Arranged by Anne Pater
Original Key

Pop ♩ = 149

A *mf*

Soprano
A - - pa - teu,a - pa - teu A - - pa - teu,a - pa - teu A - - pa - teu,a - pa - teu Uh, uh - uh, uh - uh.

Alto
A - - pa - teu,a - pa - teu A - - pa - teu,a - pa - teu A - - pa - teu,a - pa - teu Uh, uh - uh, uh - uh.

Bass
A - - pa - teu,a - pa - teu A - - pa - teu,a - pa - teu A - - pa - teu,a - pa - teu Uh, uh - uh, uh - uh.

C Instr.

Piano Combo
C5 B5 C5

Synthesizer

Electric Guitar

Bass Guitar

Drums

Percussion
Handclaps

Copyright © 2024 BMG Onyx, Mars Force Music, Warner Geo Met Ric Music, Tim & Danny Sounds, WC Music Corp., Chae Young Park ASCAP Pub Designee, Kenny + Betty Tunes, LLC, Sony Music Publishing (US) LLC, Songs Of Universal, Inc., Electric Feel Music, Omer Fedi Music, Universal Music Corp., Cirkut Break er LLC, PW Arrangements, Universal Music - MGB Songs, Wellhellothere Music, Westside Independent Music Publishing LLC and Nine Lives Later All Rights for BMG Onyx and Mars Force Music Administered by BMG Rights Management (US) LLC All Rights for Warner Geo Met Ric Music and Tim & Danny Sounds Administered by Warner Geo Met Music Corp. and PW Arrangements All Rights for PW Arrangements Administered by Universal Music Corp. International Copyright Secured All Rights Reserved



3 APT.
Chorus-LIGHT(SAB) Combo C

13

S hearts, hearts, Come give me some - thing I can feel, oh - oh, oh.____

A Red hearts, red hearts, that's what I'm on,____ yeah. Come give me some - thing I can feel, oh - oh, oh.____

B hearts, hearts, Come give me some - thing I can feel, oh - oh, oh.____

C Instr.

P.C. C5 B5 C5

Synth

E. Gtr.

BG

Dr.

Perc.

C

S Don't you want me like I want you, ba - - by? Don't you need me like I need you now?

A Don't you want me like I want you, ba - - by? Don't you need me like I need you now?

B Don't you want me like I want you, ba - - by? Don't you need me like I need you now?

C Instr.

P.C. Ab Bb Cm Eb

Synth

E. Gtr.

BG

Dr.

Perc.

5 APT.
Chorus-LIGHT(SAB) Combo C

29

S A - - pa - teu, a - pa - teu A - - pa - teu, a - pa - teu A - - pa - teu, a - pa - teu Uh, uh - uh, uh - uh.

A A - - pa - teu, a - pa - teu A - - pa - teu, a - pa - teu A - - pa - teu, a - pa - teu Uh, uh - uh, uh - uh.

B A Aah _____ It's what -

C Instr.

P.C. C5 B:5 C5
swell

Synth

E. Gtr.

BG

Dr.

Perc.

E

S what - e - ver, what - e - ver, what - e - ver, woo! uh - uh, uh - uh.

A what - e - ver, what - e - ver, what - e - ver, woo! uh - uh, uh - uh.

B - e - ver, it's what - e - ver, it's what - e - ver you like. Turn this a - pa - teu in - to a club. I'm tal - king

C Instr.

P.C. C5 B:5 C5

Synth

E. Gtr.

BG

Dr.

Perc.

7 APT.
Chorus-LIGHT(SAB) Combo C

45

S Sleep to - mor - row, but to - night go cra - - zy. All you got - ta do is just meet me at the

A Sleep to - mor - row, but to - night go cra - - zy. All you got - ta do is just meet me at the

B Sleep to - mor - row, but to - night go cra - - zy. All you got - ta do is just

C Instr.

P.C. A_b B_b Cm

Synth

E. Gtr.

BG

Dr.

Perc.

G

S Aah uh - uh, uh - uh.

A Aah Aah

B A - - pa - teu, a - pa - teu A - - pa - teu, a - pa - teu A - - pa - teu, a - pa - teu Uh, uh - uh, uh - uh.

C Instr.

P.C. A_b B_b Cm E_b $E_b(aab)$

Synth

E. Gtr.

BG

Dr.

Perc.

9 APT.
Chorus-LIGHT(SAB) Combo C

I *f*

S Hold on, hold on. I'm on my way.

A Hold on, hold on. I'm on my way.

B Hold on, hold on. on my way, hold on, I'm on my wa - - y.

C Instr.

P.C. Cm Bb Eb C

Synth

E. Gtr.

BG

Dr.

Perc. *Beating*

65

S Yeah, yeah, yeah - yeah, yeah. I'm on my way.

A Yeah, yeah, yeah - yeah, yeah. I'm on my way.

B Yeah, yeah, yeah - yeah, yeah. on my way, hold on, I'm on my wa - - y.

C Instr.

P.C. Cm Bb Eb C

Synth

E. Gtr.

BG

Dr.

Perc.

11 APT.
Chorus-LIGHT(SAB) Combo C

J *mf*

S Don't you want me like I want you, ba - by? Don't you need me like I need you now?

A Don't you want me like I want you, ba - by? Don't you need me like I need you now?

B Don't you want me like I want you, ba - by? Don't you need me like I need you now?

C Instr.

P.C. *mf* A_b B_b C_m E_b

Synth

E. Gtr.

BG

Dr.

Perc.

sf

S Sleep to - mor - row, but to - night go cra - - zy. All you got - ta do is just meet me at the

A Sleep to - mor - row, but to - night go cra - - zy. All you got - ta do is just meet me at the

B Sleep to - mor - row, but to - night go cra - - zy. All you got - ta do is just

C Instr.

P.C. A_b B_b C_m E_b

Synth

E. Gtr.

BG

Dr.

Perc.

13 APT.
Chorus-LIGHT(SAB) Combo C

95 *f*

S Aah Just meet me at the

A Aah Just meet me at the

B A - - pa - teu,a - pa - teu A - - pa - teu,a - pa - teu A - - pa - teu,a - pa - teu Uh, uh - uh, uh - uh.

C Instr.

P.C. *Ab Bb Cm Eb E_b(add9)*

Synth

E. Gtr.

BG

Dr.

Perc.

97

S Aah uh - uh, uh - uh.

A Aah uh - uh, uh - uh.

B A - - pa - teu,a - pa - teu A - - pa - teu,a - pa - teu pa - teu,a - pa - teu Uh, uh - uh, uh - uh.

C Instr.

P.C. *Ab Bb Cm Eb*

Synth

E. Gtr.

BG

Dr.

Perc.



Chorus-LIGHT(SAB) Combo Bb

APT.

- ROSÉ & Bruno Mars -

Words and Music By Philip Lawrence II, Peter Gene Hernandez, Henry Walter, Christopher Brody Brown, Chae Young Park, Nicholas Chinn, Theron Thomas, Rogét Chahayed, Omer Fedi, Michael Chapman, Amy Allen
Arranged by Anne Pater
Original Key

DEMO

Pop ♩ = 149

[A]

mf

Soprano
A - - pa - teu,a - pa - teu A - - pa - teu,a - pa - teu A - - pa - teu,a - pa - teu Uh, uh - uh, uh - uh.

Alto
A - - pa - teu,a - pa - teu A - - pa - teu,a - pa - teu A - - pa - teu,a - pa - teu Uh, uh - uh, uh - uh.

Bass
A - - pa - teu,a - pa - teu A - - pa - teu,a - pa - teu A - - pa - teu,a - pa - teu Uh, uh - uh, uh - uh.

Bb Instr.

Piano Combo
C5 Bb5 C5

Synthesizer

Electric Guitar

Bass Guitar

Drums

Percussion
Handclaps

3 APT.
Chorus-LIGHT(SAB) Combo Bb

19

S hearts, hearts, Come give me some - thing I can feel, oh - oh, oh.____

A Red hearts, red hearts, that's what I'm on,____ yeah. Come give me some - thing I can feel, oh - oh, oh.____

B hearts, hearts, Come give me some - thing I can feel, oh - oh, oh.____

E♭ Instr.

P.C. C5 B♭5 C5

Synth

E. Gtr.

BG

Dr.

Perc.

C

S Don't you want me like I want you, ba - - by? Don't you need me like I need you now?

A Don't you want me like I want you, ba - - by? Don't you need me like I need you now?

B Don't you want me like I want you, ba - - by? Don't you need me like I need you now?

E♭ Instr.

P.C. A♭ B♭ Cm E♭

Synth

E. Gtr.

BG

Dr.

Perc.

5 APT.
Chorus-LIGHT(SAB) Combo Bb

29

S
A - - pa - teu,a - pa - teu A - - pa - teu,a - pa - teu A - - pa - teu,a - pa - teu Uh, uh - uh, uh - uh.

A
A - - pa - teu,a - pa - teu A - - pa - teu,a - pa - teu A - - pa - teu,a - pa - teu Uh, uh - uh, uh - uh.

B
A Aah _____ It's what -

Bb Instr.

P.C.
C5 Bb5 C5
swell

Synth

E. Gtr.

BG

Dr.

Perc.

E

S
what - e - ver, what - e - ver, what - e - ver, woo! uh - uh, uh - uh.

A
what - e - ver, what - e - ver, what - e - ver, woo! uh - uh, uh - uh.

B
- e - ver, it's what - e - ver, it's what - e - ver you like. Turn this a - pa - teu in - to a club. I'm tal - king

Bb Instr.

P.C.
C5 Bb5 C5

Synth

E. Gtr.

BG

Dr.

Perc.

7 APT.
Chorus-LIGHT(SAB) Combo Bb

45

S Sleep to - mor - row, but to - night go cra - - zy. All you got - ta do is just meet me at the

A Sleep to - mor - row, but to - night go cra - - zy. All you got - ta do is just meet me at the

B Sleep to - mor - row, but to - night go cra - - zy. All you got - ta do is just

Bb Instr.

P.C. A \flat B \flat Cm

Synth

E. Gtr.

BG

Dr.

Perc.

G

S Aah uh - uh, uh - uh.

A Aah Aah

B A - - pa - teu, a - pa - teu A - - pa - teu, a - pa - teu A - - pa - teu, a - pa - teu Uh, uh - uh, uh - uh.

Bb Instr.

P.C. A \flat B \flat Cm E \flat E \flat (add9)

Synth

E. Gtr.

BG

Dr.

Perc.

9 APT.
Chorus-LIGHT(SAB) Combo Bb

1 *f*

S Hold on, hold on. I'm on my way.

A Hold on, hold on. I'm on my way.

B Hold on, hold on. on my way, hold on, I'm on my way.

B♭ Instr.

P.C. Cm B♭ E♭ C

Synth

E. Gtr.

BG.

Dr.

Perc. *Beating*

65

S Yeah, yeah, yeah - yeah, yeah. I'm on my way.

A Yeah, yeah, yeah - yeah, yeah. I'm on my way.

B Yeah, yeah, yeah - yeah, yeah. on my way, hold on, I'm on my way.

B♭ Instr.

P.C. Cm B♭ E♭ C

Synth

E. Gtr.

BG.

Dr.

Perc.

11 APT.
Chorus-LIGHT(SAB) Combo Bb

J *mf*

S Don't you want me like I want you, ba - by? Don't you need me like I need you now?

A Don't you want me like I want you, ba - by? Don't you need me like I need you now?

B Don't you want me like I want you, ba - by? Don't you need me like I need you now?

Bb Instr.

P.C. *mf* $A\flat$ $B\flat$ Cm $E\flat$

Synth

E. Gtr.

BG

Dr.

Perc.

sf

S Sleep to - mor - row, but to - night go cra - - zy. All you got - ta do is just meet me at the

A Sleep to - mor - row, but to - night go cra - - zy. All you got - ta do is just meet me at the

B Sleep to - mor - row, but to - night go cra - - zy. All you got - ta do is just

Bb Instr.

P.C. $A\flat$ $B\flat$ Cm $E\flat$

Synth

E. Gtr.

BG

Dr.

Perc.

13 APT.
Chorus-LIGHT(SAB) Combo Bb

93 *f*

S Aah Just meet me at the

A Aah Just meet me at the

B A - - pa - teu,a - pa - teu A - - pa - teu,a - pa - teu A - - pa - teu,a - pa - teu Uh, uh - uh, uh - uh.

Bb Instr. *A_b* *B_b* *Cm* *E_b* *E_b(add9)*

P.C.

Synth

E. Gtr.

BG

Dr.

Perc.

97

S Aah uh - uh, uh - uh.

A Aah uh - uh, uh - uh.

B A - - pa - teu,a - pa - teu A - - pa - teu,a - pa - teu pa - teu,a - pa - teu Uh, uh - uh, uh - uh.

Bb Instr. *A_b* *B_b* *Cm* *E_b*

P.C. *f*

Synth

E. Gtr.

BG

Dr.

Perc.



Chorus-LIGHT(SAB) Combo Eb

APT.

- ROSÉ & Bruno Mars -

Words and Music By Philip Lawrence II, Peter Gene Hernandez, Henry Walter, Christopher Brody Brown, Chae Young Park, Nicholas Chinn, Theron Thomas, Rogét Chahayed, Omer Fedi, Michael Chapman, Amy Allen
Arranged by Anne Pater
Original Key

DEMO

Pop ♩ = 149

[A]

mf

Soprano
A - - pa - teu,a - pa - teu A - - pa - teu,a - pa - teu A - - pa - teu,a - pa - teu Uh, uh - uh, uh - uh.

Alto
A - - pa - teu,a - pa - teu A - - pa - teu,a - pa - teu A - - pa - teu,a - pa - teu Uh, uh - uh, uh - uh.

Bass
A - - pa - teu,a - pa - teu A - - pa - teu,a - pa - teu A - - pa - teu,a - pa - teu Uh, uh - uh, uh - uh.

E♭ Instr.

Piano Combo
C5 B♭5 C5

Synthesizer

Electric Guitar

Bass Guitar

Drums

Percussion
Handclaps

3 APT.
Chorus-LIGHT(SAB) Combo Eb

19

S hearts, hearts, Come give me some - thing I can feel, oh - oh, oh.____

A Red hearts, red hearts, that's what I'm on,____ yeah. Come give me some - thing I can feel, oh - oh, oh.____

B hearts, hearts, Come give me some - thing I can feel, oh - oh, oh.____

E♭ Instr.

P.C. C5 B♭5 C5

Synth

E. Gtr.

BG

Dr.

Perc.

C

S Don't you want me like I want you, ba - - by? Don't you need me like I need you now?

A Don't you want me like I want you, ba - - by? Don't you need me like I need you now?

B Don't you want me like I want you, ba - - by? Don't you need me like I need you now?

E♭ Instr.

P.C. A♭ B♭ Cm E♭

Synth

E. Gtr.

BG

Dr.

Perc.

5 APT.
Chorus-LIGHT(SAB) Combo Eb

29

S
A - - pa - teu,a - pa - teu A - - pa - teu,a - pa - teu A - - pa - teu,a - pa - teu Uh, uh - uh, uh - uh.

A
A - - pa - teu,a - pa - teu A - - pa - teu,a - pa - teu A - - pa - teu,a - pa - teu Uh, uh - uh, uh - uh.

B
A Aah _____ It's what -

E♭ Instr.

P.C.
C5 B♭5 C5
swell

Synth

E. Gtr.

BG

Dr.

Perc.

E

S
what - e - ver, what - e - ver, what - e - ver, woo! uh - uh, uh - uh.

A
what - e - ver, what - e - ver, what - e - ver, woo! uh - uh, uh - uh.

B
- e - ver, it's what - e - ver, it's what - e - ver you like. Turn this a - pa - teu in - to a club. I'm tal - king

E♭ Instr.

P.C.
C5 B♭5 C5

Synth

E. Gtr.

BG

Dr.

Perc.

7 APT.
Chorus-LIGHT(SAB) Combo Eb

45

S
Sleep to - mor - row, but to - night go cra - - zy. All you got - ta do is just meet me at the

A
Sleep to - mor - row, but to - night go cra - - zy. All you got - ta do is just meet me at the

B
Sleep to - mor - row, but to - night go cra - - zy. All you got - ta do is just

E♭ Instr.

P.C.
A♭ B♭ Cm

Synth

E. Gtr.

BG

Dr.

Perc.

G

S
Aah uh - uh, uh - uh.

A
Aah Aah

B
A - - pa - teu, a - pa - teu A - - pa - teu, a - pa - teu A - - pa - teu, a - pa - teu Uh, uh - uh, uh - uh.

E♭ Instr.

P.C.
A♭ B♭ Cm E♭ E♭(add9)

Synth

E. Gtr.

BG

Dr.

Perc.

9 APT.
Chorus-LIGHT(SAB) Combo Eb

1 *f*

S Hold on, hold on. I'm on my way.

A Hold on, hold on. I'm on my way.

B Hold on, hold on. on my way, hold on, I'm on my way.

E♭ Instr.

P.C. Cm B♭ E♭ C

Synth

E. Gtr.

BG.

Dr.

Perc. *Beating*

65

S Yeah, yeah, yeah - yeah, yeah. I'm on my way.

A Yeah, yeah, yeah - yeah, yeah. I'm on my way.

B Yeah, yeah, yeah - yeah, yeah. on my way, hold on, I'm on my way.

E♭ Instr.

P.C. Cm B♭ E♭ C

Synth

E. Gtr.

BG.

Dr.

Perc.

11 APT.
Chorus-LIGHT(SAB) Combo Eb

J *mf*

S Don't you want me like I want you, ba - by? Don't you need me like I need you now?

A Don't you want me like I want you, ba - by? Don't you need me like I need you now?

B Don't you want me like I want you, ba - by? Don't you need me like I need you now?

E♭ Instr.

P.C. *mf* A♭ B♭ Cm E♭

Synth

E. Gtr.

BG

Dr.

Perc.

sl

S Sleep to - mor - row, but to - night go cra - - zy. All you got - ta do is just meet me at the

A Sleep to - mor - row, but to - night go cra - - zy. All you got - ta do is just meet me at the

B Sleep to - mor - row, but to - night go cra - - zy. All you got - ta do is just

E♭ Instr.

P.C. A♭ B♭ Cm E♭

Synth

E. Gtr.

BG

Dr.

Perc.

13 APT.
Chorus-LIGHT(SAB) Combo Eb

93 *f*

S Aah Just meet me at the

A Aah Just meet me at the

B A - - pa - teu,a - pa - teu A - - pa - teu,a - pa - teu A - - pa - teu,a - pa - teu Uh, uh - uh, uh - uh.

E♭ Instr. A♭ B♭ Cm Eb Eb(add9)

P.C.

Synth

E. Gtr.

BG

Dr.

Perc.

97

S Aah uh - uh, uh - uh.

A Aah uh - uh, uh - uh.

B A - - pa - teu,a - pa - teu A - - pa - teu,a - pa - teu pa - teu,a - pa - teu Uh, uh - uh, uh - uh.

E♭ Instr.

P.C.

Synth

E. Gtr.

BG

Dr.

Perc.



Chorus-LIGHT(SAB) small Combo

APT.

- ROSÉ & Bruno Mars -

Words and Music By Philip Lawrence II, Peter Gene Hernandez, Henry Walter, Christopher Brody Brown, Chae Young Park, Nicholas Chinn, Theron Thomas, Rogét Chahayed, Omer Fedi, Michael Chapman, Amy Allen
Arranged by Anne Pater
Original Key

Pop ♩ = 149

A

mf

Soprano
A - pa - teu,a - pa - teu A - pa - teu,a - pa - teu A - pa - teu,a - pa - teu Uh, uh - uh, uh - uh.

Alto
A - pa - teu,a - pa - teu A - pa - teu,a - pa - teu A - pa - teu,a - pa - teu Uh, uh - uh, uh - uh.

Bass
A - pa - teu,a - pa - teu A - pa - teu,a - pa - teu A - pa - teu,a - pa - teu Uh, uh - uh, uh - uh.

Piano Combo
C5 B♭5 C5

Electric Guitar

Bass Guitar

Drums

Percussion
Handclaps

Copyright © 2024 BMG Onyx, Mars Force Music, Warner Geo Met Ric Music, Tim & Danny Sounds, WC Music Corp., Chae Young Park ASCAP Pub Designee, Kenny + Betty Tunes, LLC, Sony Music Publishing (US) LLC, Songs Of Universal, Inc., Electric Feel Music, Omer Fedi Music, Universal Music Corp., Cirkut Break er LLC, PW Arrangements, Universal Music - MGB Songs, Wellhellothere Music, Westside Independent Music Publishing LLC and Nine Lives Later All Rights for BMG Onyx and Mars Force Music Administered by BMG Rights Management (US) LLC All Rights for Warner Geo Met Ric Music and Tim & Danny Sounds Administered by Warner Geo Met Music Corp. and PW Arrangements All Rights for PW Arrangements Administered by Universal Music Corp. International Copyright Secured All Rights Reserved

3 APT.
Chorus-LIGHT(SAB) small Combo

13

S
hearts, hearts, Come give me some - thing I can feel, oh - oh, oh. ___

A
Red hearts, red hearts, that's what I'm on, ___ yeah. Come give me some - thing I can feel, oh - oh, oh. ___

B
hearts, hearts, Come give me some - thing I can feel, oh - oh, oh. ___

P.C.
C5 B:5 C5

E. Gtr.

BG

Dr.

Perc.

C

S
Don't you want me like I want you, ba - by? Don't you need me like I need you now?

A
Don't you want me like I want you, ba - by? Don't you need me like I need you now?

B
Don't you want me like I want you, ba - by? Don't you need me like I need you now?

P.C.
Ab Bb Cm Eb

E. Gtr.

BG

Dr.

Perc.

5 APT.
Chorus-LIGHT(SAB) small Combo

29

S
A - pa - teu, a - pa - teu A - pa - teu, a - pa - teu A - pa - teu, a - pa - teu Uh, uh - uh, uh - uh.

A
A - pa - teu, a - pa - teu A - pa - teu, a - pa - teu A - pa - teu, a - pa - teu Uh, uh - uh, uh - uh.

B
A Aah _____ It's what -

P.C.
C5 B:5 C5

E. Gtr.

BG

Dr.

Perc.

E

S
what - e - ver, what - e - ver, what - e - ver, woo! uh - uh, uh - uh.

A
what - e - ver, what - e - ver, what - e - ver, woo! uh - uh, uh - uh.

B
- e - ver, it's what - e - ver, it's what - e - ver you like. Turn this a - pa - teu in - to a club. I'm tal - king

P.C.
C5 B:5 C5

E. Gtr.

BG

Dr.

Perc.

7 APT.
Chorus-LIGHT(SAB) small Combo

45

S
Sleep to - mor - row, but to - night go cra - zy. All you got - ta do is just meet me__ at the

A
Sleep to - mor - row, but to - night go cra - zy. All you got - ta do is just meet me__ at the

B
Sleep to - mor - row, but to - night go cra - zy. All you got - ta do is just

P.C.
Ab Bb Cm

E. Gtr.

BG

Dr.

Perc.

G

S
Aah _____ uh - uh, uh - uh.

A
Aah _____ Aah _____

B
A - - pa - teu, a - pa - teu A - - pa - teu, a - pa - teu A - - pa - teu, a - pa - teu Uh, uh - uh, uh - uh.

P.C.
Ab Bb Cm Eb Eb(add9)

E. Gtr.

BG

Dr.

Perc.

9 APT.
Chorus-LIGHT(SAB) small Combo

I *f*

S: Hold on, hold on. I'm on my way.

A: Hold on, hold on. I'm on my way.

B: Hold on, hold on. on my way, hold on, I'm on my wa - - y.

P.C. *f* Cm B \flat E \flat C

E. Gtr.

BG.

Dr.

Perc. *Beating*

65

S: Yeah, yeah, yeah - yeah, yeah. I'm on my way.

A: Yeah, yeah, yeah - yeah, yeah. I'm on my way.

B: Yeah, yeah, yeah - yeah, yeah. on my way, hold on, I'm on my wa - - y.

P.C. Cm B \flat E \flat C

E. Gtr.

BG.

Dr.

Perc.

11 APT.
Chorus-LIGHT(SAB) small Combo

J *mf*

S Don't you want me like I want you, ba - by? Don't you need me like I need you now?

A *mf*
Don't you want me like I want you, ba - by? Don't you need me like I need you now?

B *mf*
Don't you want me like I want you, ba - by? Don't you need me like I need you now?

P.C. *mf*
Ab Bb Cm Eb

E. Gtr.

BG

Dr.

Perc.

57

S Sleep to - mor - row, but to - night go cra - zy. All you got - ta do is just meet me at the

A Sleep to - mor - row, but to - night go cra - zy. All you got - ta do is just meet me at the

B Sleep to - mor - row, but to - night go cra - zy. All you got - ta do is just

P.C. *mf*
Ab Bb Cm Eb

E. Gtr.

BG

Dr.

Perc.

13 APT.
Chorus-LIGHT(SAB) small Combo

93 *f*

S Aah Just meet me at the

A Aah Just meet me at the

B A - - pa - teu, a - pa - teu A - - pa - teu, a - pa - teu A - - pa - teu, a - pa - teu Uh, uh - uh, uh - uh.

P.C. *Ab Bb Cm Eb Eb(add9)*

E. Gtr.

BG

Dr.

Perc.

97

S Aah uh - uh, uh - uh.

A Aah uh - uh, uh - uh.

B A - - pa - teu, a - pa - teu A - - pa - teu, a - pa - teu pa - teu, a - pa - teu Uh, uh - uh, uh - uh.

P.C. *Ab Bb Cm Eb*

E. Gtr.

BG

Dr.

Perc.

Chorus-LIGHT(SAB) Piano Solo Advanced

APT.

- ROSÉ & Bruno Mars -

Words and Music By Philip Lawrence II, Peter Gene Hernandez, Henry Walter, Christopher Brody Brown, Chae Young Park, Nicholas Chinn, Theron Thomas, Rogét Chahayed, Omer Fedi, Michael Chapman, Amy Allen
Arranged by Anne Pater
Original Key

Pop ♩ = 149

A

mf

Soprano
A - pa - teu, a - pa - teu A - pa - teu, a - pa - teu A - pa - teu, a - pa - teu Uh, uh - uh, uh - uh.

mf

Alto
A - pa - teu, a - pa - teu A - pa - teu, a - pa - teu A - pa - teu, a - pa - teu Uh, uh - uh, uh - uh.

mf

Bass
A - pa - teu, a - pa - teu A - pa - teu, a - pa - teu A - pa - teu, a - pa - teu Uh, uh - uh, uh - uh.

Body Percussion
Handclaps (optional)

Piano Advanced
C5 Bb5 C5

3 APT.
Chorus-LIGHT(SAB) Piano Solo Advanced

13

S
hearts, hearts, Come give me some - thing I can feel, oh - oh, oh. . .

A
Red hearts, red hearts, that's what I'm on, . . . yeah. Come give me some - thing I can feel, oh - oh, oh. . .

B
hearts, hearts, Come give me some - thing I can feel, oh - oh, oh. . .

B. Perc.

P.A.
C5 Bb5 C5

C

S
Don't you want_ me like I want you, ba - by? Don't you need_ me like I need_ you now?

A
Don't you want_ me like I want you, ba - by? Don't you need_ me like I need_ you now?

B
Don't you want_ me like I want you, ba - by? Don't you need_ me like I need_ you now?

B. Perc.

P.A.
Ab Bb Cm Eb
mf

45

S
Sleep to - mor - row, but to - night go cra - zy. All you got - ta do is just meet me_ at the

A
Sleep to - mor - row, but to - night go cra - zy. All you got - ta do is just meet me_ at the

B
Sleep to - mor - row, but to - night go cra - zy. All you got - ta do is just

B. Perc.

P.A.

Ab Bb Cm

G

S
Aah _____ uh - uh, uh - uh.

A
Aah _____ Aah _____

B
A - pa - teu, a - pa - teu A - pa - teu, a - pa - teu A - pa - teu, a - pa - teu Uh, uh - uh, uh - uh.

B. Perc.

P.A.

Ab Bb Cm Eb Eb(add9)

I

f

S
Hold on, hold on... I'm on my way.

A
Hold on, hold on... I'm on my way.

B
Hold on, hold on... on my way, hold on, I'm on my wa - y.

B. Perc.

P.A.
Cm Bb Eb C
f

65

S
Yeah, yeah, yeah - yeah, yeah... I'm on my way.

A
Yeah, yeah, yeah - yeah, yeah... I'm on my way.

B
Yeah, yeah, yeah - yeah, yeah... on my way, hold on, I'm on my wa - y.

B. Perc.

P.A.
Cm Bb Eb C

J *mf*

S Don't you want_ me like I want you, ba - by? Don't you need_ me like I need_ you now?

A Don't you want_ me like I want you, ba - by? Don't you need_ me like I need_ you now?

B Don't you want_ me like I want you, ba - by? Don't you need_ me like I need you now?

B. Perc.

P.A. *mf*

A \flat B \flat Cm E \flat

81

S Sleep to - mor - row, but to - night go cra - zy. All you got - ta do is just meet me__ at the

A Sleep to - mor - row, but to - night go cra - zy. All you got - ta do is just meet me__ at the

B Sleep to - mor - row, but to - night go cra - zy. All you got - ta do is just

B. Perc.

P.A.

A \flat B \flat Cm E \flat

93

S *f* Aah Just meet me at the

A *f* Aah Just meet me at the

B *f* A - pa - teu, a - pa - teu A - pa - teu, a - pa - teu A - pa - teu, a - pa - teu Uh, uh - uh, uh - uh.

B. Perc.

P.A. *Ab* *Bb* *Cm* *Eb* *Eb(add9)*

97

S Aah uh - uh, uh - uh.

A Aah uh - uh, uh - uh.

B A - pa - teu, a - pa - teu A - pa - teu, a - pa - teu pa - teu, a - pa - teu Uh, uh - uh, uh - uh.

B. Perc.

P.A. *Ab* *Bb* *Cm* *Eb* *f*

3 APT.
Chorus-LIGHT(SAB) Piano Solo Intermediate

13

S
hearts, hearts, Come give me some - thing I can feel, oh - oh, oh. _

A
Red hearts, red hearts, that's what I'm on, _ yeah. Come give me some - thing I can feel, oh - oh, oh. _

B
hearts, hearts, Come give me some - thing I can feel, oh - oh, oh. _

B. Perc.

P.I.
C5 Bb5 C5

C

S
Don't you want_ me like I want you, ba - by? Don't you need_ me like I need_ you now?

A
Don't you want_ me like I want you, ba - by? Don't you need_ me like I need_ you now?

B
Don't you want_ me like I want you, ba - by? Don't you need_ me like I need_ you now?

B. Perc.

P.I.
Ab Bb Cm Eb
mf

45

S
Sleep to - mor - row, but to - night go cra - zy. All you got - ta do is just meet me_ at the

A
Sleep to - mor - row, but to - night go cra - zy. All you got - ta do is just meet me_ at the

B
Sleep to - mor - row, but to - night go cra - zy. All you got - ta do is just

B. Perc.

P.I.
Ab Bb Cm

G

S
Aah_ uh - uh, uh - uh.

A
Aah_ Aah_

B
A - pa - teu, a - pa - teu A - pa - teu, a - pa - teu A - pa - teu, a - pa - teu Uh, uh - uh, uh - uh.

B. Perc.

P.I.
Ab Bb Cm Eb Eb(add9)

I

S
Hold on, hold on... I'm on my way.

A
Hold on, hold on... I'm on my way.

B
Hold on, hold on... on my way, hold on, I'm on my wa - y.

B. Perc.

P.I.
Cm Bb Eb C
f

65

S
Yeah, yeah, yeah - yeah, yeah... I'm on my way.

A
Yeah, yeah, yeah - yeah, yeah... I'm on my way.

B
Yeah, yeah, yeah - yeah, yeah... on my way, hold on, I'm on my wa - y.

B. Perc.

P.I.
Cm Bb Eb C

J *mf*

S Don't you want_ me like I want you, ba - by? Don't you need_ me like I need_ you now?

A *mf*
Don't you want_ me like I want you, ba - by? Don't you need_ me like I need_ you now?

B *mf*
Don't you want_ me like I want you, ba - by? Don't you need_ me like I need_ you now?

B. Perc.

P.I. *mf*

A \flat *B \flat* *Cm* *E \flat*

81

S Sleep to - mor - row, but to - night go cra - zy. All you got - ta do is just meet me_ at the

A Sleep to - mor - row, but to - night go cra - zy. All you got - ta do is just meet me_ at the

B Sleep to - mor - row, but to - night go cra - zy. All you got - ta do is just

B. Perc.

P.I.

A \flat *B \flat* *Cm* *E \flat*

93

S *f* Aah Just meet me at the

A *f* Aah Just meet me at the

B *f* A - pa - teu, a - pa - teu A - pa - teu, a - pa - teu A - pa - teu, a - pa - teu Uh, uh - uh, uh - uh.

B. Perc.

P.I. *Ab* *Bb* *Cm* *Eb* *Eb(add9)*

97

S Aah uh - uh, uh - uh.

A Aah uh - uh, uh - uh.

B A - pa - teu, a - pa - teu A - pa - teu, a - pa - teu pa - teu, a - pa - teu Uh, uh - uh, uh - uh.

B. Perc.

P.I. *Ab* *Bb* *Cm* *Eb* *f*

Chorus-LIGHT(SAB)

APT.

- ROSÉ & Bruno Mars -

Words and Music By Philip Lawrence II, Peter Gene Hernandez, Henry Walter, Christopher Brody Brown, Chae Young Park, Nicholas Chinn, Theron Thomas, Rogét Chahayed, Omer Fedi, Michael Chapman, Amy Allen
Arranged by Anne Pater
Original Key

Pop ♩ = 149

A

mf

Soprano
A - pa - teu, a - pa - teu A - pa - teu, a - pa - teu A - pa - teu, a - pa - teu Uh, uh - uh, uh - uh.

Alto
A - pa - teu, a - pa - teu A - pa - teu, a - pa - teu A - pa - teu, a - pa - teu Uh, uh - uh, uh - uh.

Bass
A - pa - teu, a - pa - teu A - pa - teu, a - pa - teu A - pa - teu, a - pa - teu Uh, uh - uh, uh - uh.

5

S
A - pa - teu, a - pa - teu A - pa - teu, a - pa - teu A - pa - teu, a - pa - teu Uh, uh - uh, uh - uh.

A
A - pa - teu, a - pa - teu A - pa - teu, a - pa - teu A - pa - teu, a - pa - teu Uh, uh - uh, uh - uh.

B
A - pa - teu, a - pa - teu A - pa - teu, a - pa - teu A - pa - teu, a - pa - teu Uh, uh - uh, uh - uh.

21

S Sleep to - mor - row, but to - night go cra - zy. All you got - ta do is just meet me__ at the

A Sleep to - mor - row, but to - night go cra - zy. All you got - ta do is just meet me__ at the

B Sleep to - mor - row, but to - night go cra - zy. All you got - ta do is just

D

S A - pa - teu,a - pa - teu A - pa - teu,a - pa - teu A - pa - teu,a - pa - teu Uh, uh - uh, uh - uh.

A A - pa - teu,a - pa - teu A - pa - teu,a - pa - teu A - pa - teu,a - pa - teu Uh, uh - uh, uh - uh.

B A Aah _____ Uh, uh - uh, uh - uh.

p *mf*
gliss.

29

S A - pa - teu,a - pa - teu A - pa - teu,a - pa - teu A - pa - teu,a - pa - teu Uh, uh - uh, uh - uh.

A A - pa - teu,a - pa - teu A - pa - teu,a - pa - teu A - pa - teu,a - pa - teu Uh, uh - uh, uh - uh.

B A Aah _____ It's what-

p *mf*
gliss.

45

S Sleep to - mor - row, but to - night go cra - zy. All you got - ta do is just meet me__ at the

A Sleep to - mor - row, but to - night go cra - zy. All you got - ta do is just meet me__ at the

B Sleep to - mor - row, but to - night go cra - zy. All you got - ta do is just

G

S Aah _____ uh - uh, uh - uh.

A Aah _____ Aah _____

B A - pa - teu, a - pa - teu A - pa - teu, a - pa - teu A - pa - teu, a - pa - teu Uh, uh - uh, uh - uh.

53

S Aah _____ uh - uh, uh - uh.

A Aah _____ uh - uh, uh - uh.

B A - pa - teu, a - pa - teu A - pa - teu, a - pa - teu A - pa - teu, a - pa - teu Uh, uh - uh, uh - uh.

68

S Hold on, hold on. I'm on my way.

A Hold on, hold on. I'm on my way.

B on, I'm on my wa - y. Hold on, hold on. I'm on my way.

72

S Yeah, yeah, yeah - yeah, yeah. I'm on my wa - - - -

A Yeah, yeah, yeah - yeah, yeah. I'm on my wa - - - -

B Yeah, yeah, yeah - yeah, yeah. I'm on my wa - - - -

J

76

S y. Don't you want me like I want you, ba - by?

A y. Don't you want me like I want you, ba - by?

B y. Don't you want me like I want you, ba - by?

89

S Aah _____

A Aah _____ Just meet me__ at the

B A - pa - teu,a - pa - teu A - pa - teu,a - pa - teu A - pa - teu,a - pa - teu Uh, uh - uh, uh - uh.

93 *f*

S Aah _____ Just meet me__ at the

A *f* Aah _____ Just meet me__ at the

B *f* A - pa - teu,a - pa - teu A - pa - teu,a - pa - teu A - pa - teu,a - pa - teu Uh, uh - uh, uh - uh.

97

S Aah _____ uh - uh, uh - uh.

A Aah _____ uh - uh, uh - uh.

B A - pa - teu,a - pa - teu A - pa - teu,a - pa - teu pa - teu,a - pa - teu Uh, uh - uh, uh - uh.



C instr.

APT.

- ROSÉ & Bruno Mars -

*Words and Music By Philip Lawrence II, Peter Gene Hernandez, Henry Walter, Christopher Brody Brown, Chae Young Park, Nicholas Chinn, Theron Thomas, Rogét Chahayed, Omer Fedi, Michael Chapman, Amy Allen
Arranged by Anne Pater
Original Key*

A Pop ♩ = 149

B

C

D

E

F

G

ORIGINAL DO NOT COPY

Copyright © 2024 BMG Onyx, Mars Force Music, Warner Geo Met Ric Music, Tim & Danny Sounds, WC Music Corp., Chae Young Park ASCAP, Universal Music Corp., Betty Tunes, LLC, Sony Music Publishing (US) LLC, Songs Of Universal, Inc., Electric Feel Music, Omer Fedi Music, Universal Music Corp., Breakout PW Arrangements, Universal Music - MGB Songs, Welltunes Music, Westside Independent Music Publishing LLC and Nine Lives Later All Rights Reserved. BMG Onyx, Mars Force Music Administered by BMG Rights Management (US) LLC All Rights for Warner Geo Met Ric Music and Tim & Danny Sounds Administered by Warner Geo Met Ric Music Corp and PW Arrangements All Rights for PW Arrangements Administered by Universal Music Corp. International Copyright Secured. All Rights Reserved.



Bb instr.

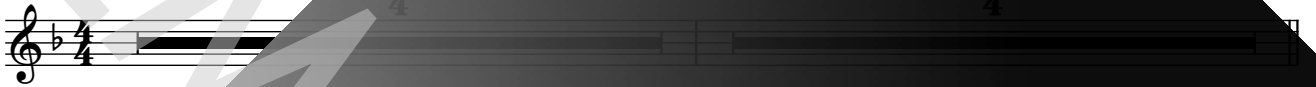
APT.

- ROSÉ & Bruno Mars -

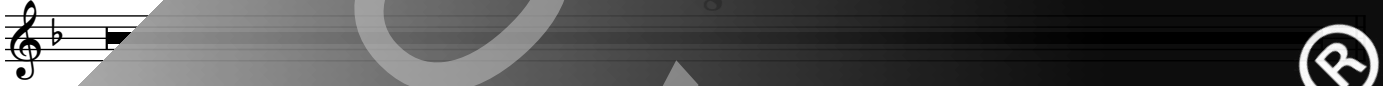
*Words and Music By Philip Lawrence II, Peter Gene Hernandez, Henry Walter, Christopher Brody Brown, Chae Young Park, Nicholas Chinn, Theron Thomas, Rogét Chahayed, Omer Fedi, Michael Chapman, Amy Allen
Arranged by Anne Pater
Original Key*

Pop ♩ = 149

A



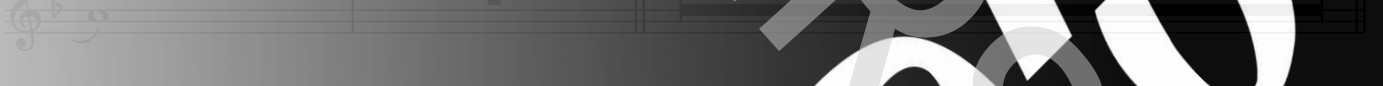
B



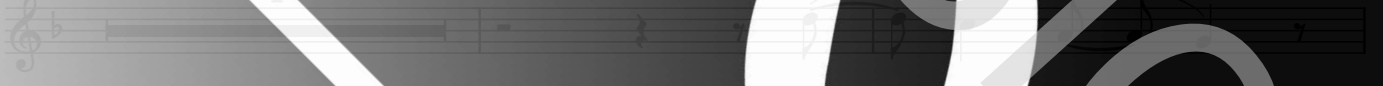
C



D



E



F



G



Chorus Online®

Copyright © 2024 BMG Onyx, Mars Force Music, Warner Geo Met Ric Music, Tim & Danny Sounds, WC Music Corp., Chae Young Park ASCAP, Electric Feel Music, Omer Fedi Music, Universal Music Corp., Betty Tunes, LLC, Sony Music Publishing (US) LLC, Songs Of Universal, Inc., Electric Feel Music, Omer Fedi Music, Universal Music Corp., Breakout Music, PW Arrangements, Universal Music - MGB Songs, Welltunes Music, Westside Independent Music Publishing LLC and Nine Lives Later All Rights Reserved. BMG Onyx, Mars Force Music Administered by BMG Rights Management (US) LLC All Rights for Warner Geo Met Ric Music and Tim & Danny Sounds Administered by Warner Geo Met Ric Music. Chae Young Park PW Arrangements All Rights for PW Arrangements Administered by Universal Music Corp. International Copyright Secured. All Rights Reserved.

ORIGINAL DO NOT COPY



Eb instr.

APT.

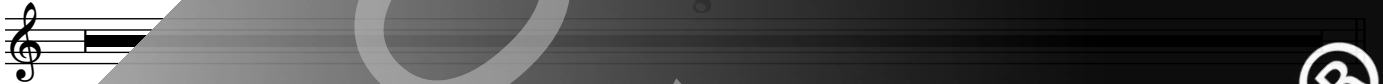
- ROSÉ & Bruno Mars -

*Words and Music By Philip Lawrence II, Peter Gene Hernandez, Henry Walter, Christopher Brody Brown, Chae Young Park, Nicholas Chinn, Theron Thomas, Rogét Chahayed, Omer Fedi, Michael Chapman, Amy Allen
Arranged by Anne Pater
Original Key*

A Pop ♩ = 149



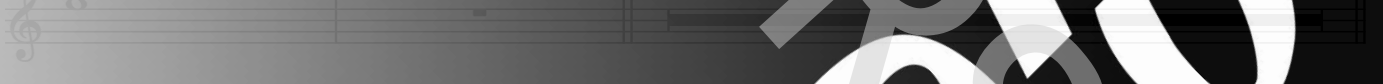
B



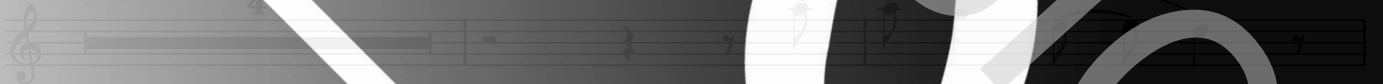
C



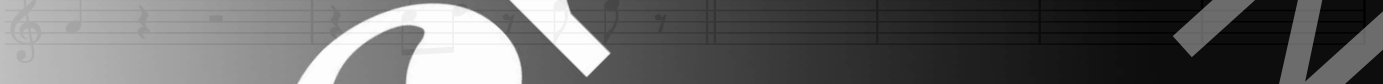
D



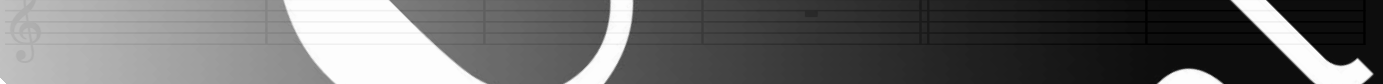
E



F



G



Chorus[®] Online

Copyright © 2024 BMG Onyx, Mars Forces Music, Warner Geo Met Ric Music, Tim & Danny Sounds, WC Music Corp., Chae Young Park ASCAP, Universal Music Corp., Sony Music Publishing (US) LLC, Songs Of Universal, Inc., Electric Feel Music, Omer Fedi Music, Universal Music Corp., Breakout Music, PW Arrangements, Universal Music - MGB Songs, Welltunes Music, Westside Independent Music Publishing LLC and Nine Lives Later All Rights Reserved. BMG Onyx, Mars Forces Music Administered by BMG Rights Management (US) LLC All Rights for Warner Geo Met Ric Music and Tim & Danny Sounds Administered by Warner Geo Met Ric Music Corp and PW Arrangements All Rights for PW Arrangements Administered by Universal Music Corp. International Copyright Secured. All Rights Reserved.

ORIGINAL DO NOT COPY

chorus[®]

online

Piano Combo

APT.

- ROSÉ & Bruno Mars -

*Words and Music By Philip Lawrence II, Peter Gene Hernandez, Henry Walter,
Christopher Brody Brown, Chae Young Park, Nicholas Chinn, Theron Thomas,
Rogét Chahayed, Omer Fedi, Michael Chapman, Amy Allen
Arranged by Anne Pater
Original Key*

Pop ♩ = 149

A

C5



B♭5 C5

C5



6

B♭5 C5

B

B♭5

11

C5

C5

B♭5

16

A♭

B♭

Cm

Copyright © 2024 BMG Onyx, Mars Force Music, Warner Geo Met Ric Music, Tim & Danny Sounds, WC Music Corp., Chae Young Park ASCAP, Universal Music Corp., Betty Tunes, LLC, Sony Music Publishing (US) LLC, Songs Of Universal, Inc., Electric Feel Music, Omer Fedi Music, Universal Music Corp., Breakout Music, PW Arrangements, Universal Music - MGB Songs, Welltunes Music, Westside Independent Music Publishing LLC and Nine Lives Later All Rights Reserved. Bruno Mars Force Music Administered by BMG Rights Management (US) LLC All Rights for Warner Geo Met Ric Music and Tim & Danny Sounds Administered by Warner Geo Met Ric Music Corp and PW Arrangements All Rights for PW Arrangements Administered by Universal Music Corp. International Copyright Secured. All Rights Reserved.

ORIGINAL DO NOT COPY

chorus[®]

online

Piano Advanced

APT.

- ROSÉ & Bruno Mars -

*Words and Music By Philip Lawrence II, Peter Gene Hernandez, Henry Walter,
Christopher Brody Brown, Chae Young Park, Nicholas Chinn, Theron Thomas,
Rogét Chahayed, Omer Fedi, Michael Chapman, Amy Allen
Arranged by Anne Pater
Original Key*

Pop ♩ = 149

A



6



11



16



Copyright © 2024 BMG Onyx, Mars Force Music, Warner Geo Met Ric Music, Tim & Danny Sounds, WC Music Corp., Chae Young Park ASCA, Electric Feel Music, Omer Fedi Music, Universal Music Corp., Breakout Music, PW Arrangements, Universal Music - MGB Songs, Welltunes Music, Westside Independent Music Publishing LLC and Nine Lives Later All Rights Reserved. BMG Onyx, Mars Force Music Administered by BMG Rights Management (US) LLC All Rights for Warner Geo Met Ric Music and Tim & Danny Sounds Administered by Warner Geo Met Ric Music Corp and PW Arrangements All Rights for PW Arrangements Administered by Universal Music Corp. International Copyright Secured. All Rights Reserved.

ORIGINAL DO NOT COPY



Piano Intermediate

APT.

- ROSÉ & Bruno Mars -

*Words and Music By Philip Lawrence II, Peter Gene Hernandez, Henry Walter, Christopher Brody Brown, Chae Young Park, Nicholas Chinn, Theron Thomas, Rogét Chahayed, Omer Fedi, Michael Chapman, Amy Allen
Arranged by Anne Pater
Original Key*

Pop ♩ = 149

A

Copyright © 2024 BMG Onyx, Mars Force Music, Warner Geo Met Ric Music, Tim & Danny Sounds, WC Music Corp., Chae Young Park ASCAP, Universal Music Corp., Betty Tunes, LLC, Sony Music Publishing (US) LLC, Songs Of Universal, Inc., Electric Feel Music, Omer Fedi Music, Universal Music Corp., Breakout Music, PW Arrangements, Universal Music - MGB Songs, Wellmud Music, Westside Independent Music Publishing LLC and Nine Lives Later All Rights Reserved. Bruno Mars Force Music Administered by BMG Rights Management (US) LLC All Rights for Warner Geo Met Ric Music and Tim & Danny Sounds Administered by Warner Geo Met Ric Music Corp and PW Arrangements All Rights for PW Arrangements Administered by Universal Music Corp. International Copyright Secured. All Rights Reserved.

ORIGINAL DO NOT COPY



Synthesizer

APT.

- ROSÉ & Bruno Mars -

*Words and Music By Philip Lawrence II, Peter Gene Hernandez, Henry Walter, Christopher Brody Brown, Chae Young Park, Nicholas Chinn, Theron Thomas, Rogét Chahayed, Omer Fedi, Michael Chapman, Amy Allen
Arranged by Anne Pater
Original Key*

Pop ♩ = 149

A

B

C

D

Copyright © 2024 BMG Onyx, Mars Force Music, Warner Geo Met Ric Music, Tim & Danny Sounds, WC Music Corp., Chae Young Park ASCAP, Electric Feel Music, Omer Fedi Music, Universal Music Corp., Breakout Music, PW Arrangements, Universal Music - MGB Songs, Welltunes Music, Westside Independent Music Publishing LLC and Nine Lives Later All Rights Reserved. BMG Onyx, Mars Force Music Administered by BMG Rights Management (US) LLC All Rights for Warner Geo Met Ric Music and Tim & Danny Sounds Administered by Warner Geo Met Ric Music. Cor and PW Arrangements All Rights for PW Arrangements Administered by Universal Music Corp. International Copyright Secured. All Rights Reserved.

ORIGINAL DO NOT COPY

Bass Guitar

APT.

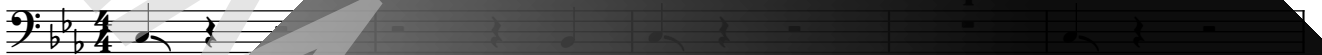
- ROSÉ & Bruno Mars -

Words and Music By Philip Lawrence II, Peter Gene Hernandez, Henry Walter,
Christopher Brody Brown, Chae Young Park, Nicholas Chinn, Theron Thomas,
Rogét Chahayed, Omer Fedi, Michael Chapman, Amy Allen
Arranged by Anne Pater
Original Key

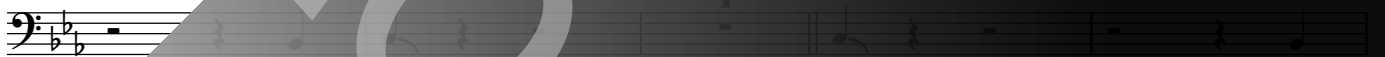
Pop ♩ = 149

A

C5



6



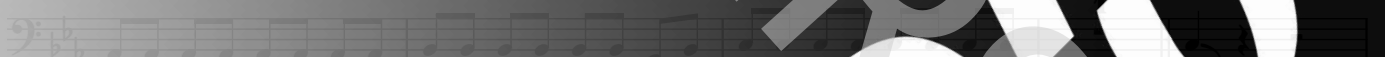
11



16



21



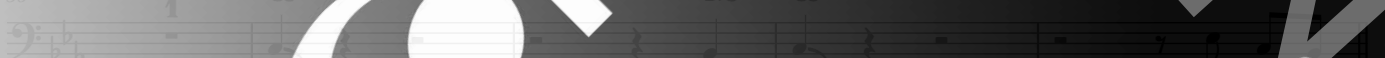
26



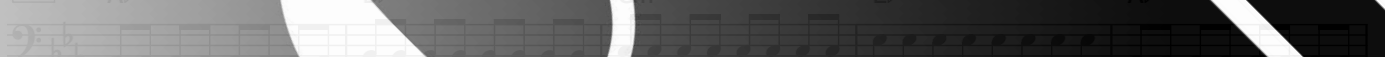
31



36



F





Drums

APT.

- ROSÉ & Bruno Mars -

*Words and Music By Philip Lawrence II, Peter Gene Hernandez, Henry Walter, Christopher Brody Brown, Chae Young Park, Nicholas Chinn, Theron Thomas, Rogét Chahayed, Omer Fedi, Michael Chapman, Amy Allen
Arranged by Anne Pater
Original Key*

Pop ♩ = 149

A

5

B

13

C

21

26

Copyright © 2024 BMG Onyx, Mars Force Music, Warner Geo Met Ric Music, Tim & Danny Sounds, WC Music Corp., Chae Young Park ASCA, Electric Feel Music, Omer Fedi Music, Universal Music Corp., Breakout Music, PW Arrangements, Universal Music - MGB Songs, Welltunes Music, Westside Independent Music Publishing LLC and Nine Lives Later All Rights Reserved. BMG Onyx, Mars Force Music Administered by BMG Rights Management (US) LLC All Rights for Warner Geo Met Ric Music and Tim & Danny Sounds Administered by Warner Geo Met Ric Music Corp and PW Arrangements All Rights for PW Arrangements Administered by Universal Music Corp. International Copyright Secured Agreements Reserved



Percussion

APT.

- ROSÉ & Bruno Mars -

*Words and Music By Philip Lawrence II, Peter Gene Hernandez, Henry Walter, Christopher Brody Brown, Chae Young Park, Nicholas Chinn, Theron Thomas, Rogét Chahayed, Omer Fedi, Michael Chapman, Amy Allen
Arranged by Anne Pater
Original Key*

Pop ♩ = 149

A

Handclaps

7

13

19

26

32

39

45

52

Chorus Online®

Copyright © 2024 BMG Onyx, Mars Force Music, Warner Geo Met Ric Music, Tim & Danny Sounds, WC Music Corp., Chae Young Park ASCAP, Universal Music Corp., Betty Tunes, LLC, Sony Music Publishing (US) LLC, Songs Of Universal, Inc., Electric Feel Music, Omer Fedi Music, Universal Music Corp., Breakout Music, PW Arrangements, Universal Music - MGB Songs, WellHeard Music, Westside Independent Music Publishing LLC and Nine Lives Later All Rights Reserved. BMG Onyx, Mars Force Music Administered by BMG Rights Management (US) LLC All Rights for Warner Geo Met Ric Music and Tim & Danny Sounds Administered by Warner Geo Met Ric Music Corp and PW Arrangements All Rights for PW Arrangements Administered by Universal Music Corp. International Copyright Secured Agreements Reserved

ORIGINAL DO NOT COPY

Leadsheet

APT.

- ROSÉ & Bruno Mars -

Words and Music By Philip Lawrence II, Peter Gene Hernandez, Henry Walter,
Christopher Brody Brown, Chae Young Park, Nicholas Chinn, Theron Thomas,
Rogét Chahayed, Omer Fedi, Michael Chapman, Amy Allen
Arranged by Anne Pater
Original Key

Pop $\text{♩} = 149$

A C5 B \flat 5 C5

A - pa - teu, a - pa - teu A - pa - teu, a - pa - teu A - pa - teu, a - pa - teu

mf

4 C5 B \flat 5

Uh, uh - uh, uh - uh, A - pa - teu, a - pa - teu A - pa - teu, a - pa - teu

7 C5 B \flat 5 C5

A - pa - teu, a - pa - teu Uh, uh - uh, uh - uh, Kis - sy face, kis - sy face

10 B \flat 5 C5

sent to your phone, but I'm try - na kiss your lips for real Uh, uh - uh

13 C5 B \flat 5 C5

Red hearts, red hearts, that's what I'm on, yeah. Come give me some - thing can

16 C \flat B \flat

feel, oh - oh, oh Don't you want me like I want you, ba - by

19 C \flat B \flat A \flat

Don't you need me like you need you now? Sleep to - mor - row but

Lyrics

APT.

- ROSÉ & Bruno Mars -

*Words and Music By Philip Lawrence II, Peter Gene Hernandez, Henry Walter, Christopher Brody Brown, Chae Young Park, Nicholas Chinn, Theron Thomas, Rogét Chahayed, Omer Fedi, Michael Chapman, Amy Allen
Arranged by Anne Pater
Original Key*

A:

Apateu, apateu
Apateu, apateu
Apateu, apateu
Uh, uh-uh, uh-uh
Apateu, apateu
Apateu, apateu
Apateu, apateu
Uh, uh-uh, uh-uh

B:

Kissy face, kissy face
Sent to your phone, but
I'm trying to kiss your lips for real
Red hearts, red hearts
That's what I'm on, yeah
Come give me something I can feel
Oh-oh, oh

C:

Don't you want me like I want you, baby
Don't you need me like I need you now
Sleep tomorrow, but tonight go crazy
All you gotta do is just meet me at the

D:

Apateu, apateu
Apateu, apateu
Apateu, apateu
Uh, uh-uh, uh-uh
Apateu, apateu
Apateu, apateu
Apateu, apateu
Uh, uh-uh, uh-uh

E:

It's whatever (Whatever), it's whatever
(Whatever)
It's whatever (Whatever) you like (Woo)
Turn this apateu into a club (Uh-uh, uh-uh)
I'm talking drink, dance smoke, freak, party
night (Come on!)
Geonbae, geonbae, girl, what's up? Oh-oh, oh

Don't you want me like I want you, baby
Don't you need me like I need you now
Sleep tomorrow, but tonight go crazy
All you gotta do is just meet me at the

Apateu, apateu
Apateu, apateu
Apateu, apateu
Uh, uh-uh, uh-uh
Apateu, apateu
Apateu, apateu
Apateu, apateu
Uh, uh-uh, uh-uh

Hey, so now you know the game
Are you ready?
Cause I'm coming to get ya, get ya, get ya

