



Everything SSAA

Pag.

02	Full score combo C instrument
10	Full score combo Bb instrument
18	Full score combo Eb instrument
26	Full score combo 4 extra staves
38	Full score small combo
49	Full score small combo 2 extra staves
65	Full score vocals (SSAA) piano advanced
72	Full score vocals (SSAA) piano moderated
79	Vocals (SATB)
87	C instrument
89	Bb instrument
91	Eb instrument
93	Piano advanced
98	Piano moderated
103	Synthesizer
106	Guitar
109	Bassguitar
111	Drumkit
114	Percussion
117	Leadsheet (melody, lyrics, chords)
121	Empty paper
124	Lyrics



01 SSAA Combo C

Everything

Words and Music by M. Bubl , A. Chang
Arranged by Hans Reintjes
Original Key



Intro $\text{♩} = 124$

Soprano 1

Soprano 2

Alto 1

Alto 2

C Instr.

D Bm7 E7 G6 D Bm7 E7 G6 D Bm7 E7 GmMaj7 G/A

Piano Adv.

Synthesizer

Warm Pad

Guitar Ac. Guitar (steel)

Bass Guitar

Drum Set

Percussion Shaker

© www.ChorusOnline.com / 0031 (0) 6 - 41 57 77 56

Chorus 1

22

S 1 tend Cause you can see it when I look at you And in this cra - - - zy li - fe and through these cra - - - zy times It's you it's you

S 2 know its true. Cause you can see it when I look at you And in this cra - - - zy li - fe and through these cra - - - zy times It's you it's you

A 1 know its true. Cause you can see it when I look at you And in this cra - - - zy li - fe and through these cra - - - zy times It's you it's you

A 2 know its true. Cause you can see it when I look at you And in this cra - - - zy li - fe and through these cra - - - zy times It's you it's you

C

P.A. E⁷ G^m G/A D G A D B^{m7} G A D D⁷

Synth

Gtr.

Bass

D. S.

Perc.

Interlude 1

29

S 1 - you make me sing you're e - vry line you're e - vry word you're e - vry - thing

S 2 - you make me sing you're e - vry line you're e - vry word you're e - vry - thing

A 1 - you make me sing you're e - vry word you're e - vry - thing

A 2 - you make me sing you're e - vry word you're e - vry - thing

C

P.A. G F#⁷ B^m D/A E⁷/G# G^mMaj7 D B^{m7} E⁷ G^mMaj7 G/A

Synth

Gtr.

Bass

D. S.

Perc.

50 **Chorus 2**

S 1 through and you know that's what our love can do — And in this cra - - - zy li - fe and through these cra - - - zy times — It's you — it's you

S 2 through and you know that's what our love can do — And in this cra - - - zy li - fe and through these cra - - - zy times — It's you — it's you

A 1 way and you know that's what our love can do — And in this cra - - - zy li - fe and through these cra - - - zy times — It's you — it's you

A 2 way and you know that's what our love can do — And in this cra - - - zy li - fe and through these cra - - - zy times — It's you — it's you

C

P.A. E^7 G^m G/A D G A D Bm^7 G A D D^7

Synth

Gtr.

Bass

D.S.

Perc.

57 **Interlude 1**

S 1 — you make me sing — you're e - vry line — you're e - vry word — you're e - vry - thing

S 2 — you make me sing — you're e - vry line — you're e - vry word — you're e - vry - thing

A 1 — you make me sing — you're e - vry word — you're e - vry - thing

A 2 — you make me sing — you're e - vry word — you're e - vry - thing

C

P.A. G $F\#7$ B^m D/A $E^7/G\#$ $GmMaj7$ D Bm^7 E^7 G^m G/A
For solo: see guitar score

Synth

Gtr. *Open for solo* *ff*

Bass

D.S.

Perc.

78

S 1
fe and through these cra - - - zy times It's you It's you you make me sing you're e - vry line you're e - vry word you're e - vry

S 2
fe and through these cra - - - zy times It's you It's you you make me sing you're e - vry line you're e - vry word you're e - vry

A 1
fe and through these cra - - - zy times It's you It's you you make me sing you're e - vry line

A 2
fe and through these cra - - - zy times It's you It's you you make me sing you're e - vry line

C
- - - - -

P.A.
E C#m7 A B E E7 A G#7 C#m E/B F#7/A# AmMaj7

Synth

Gtr.

Bass

D. S.

Perc.

85

S 1
thing cause you're my e - vry - thing

S 2
thing you're e - vry song. (Solo) cause you're my e - vry - thing

A 1
e - vry - thing you're e - vry song. and I sing a - long. cause you're my e - vry - thing

A 2
e - vry - e - - vry - thing cause you're my e - vry - thing

C
- - - - -

P.A.
C#m C#m7/B F# We prefer Guitar playing this part AmMaj7 A/B E C#m7

Synth

Gtr.

Bass

D. S.

Perc.

Interlude 3



02 SSAA Combo Bb

Everything

Words and Music by M. Bubl , A. Chang
Arranged by Hans Reintjes
Original Key

DEMO

WATER

MUSIC

MUSIC

MUSIC

Intro $\text{♩} = 124$

Soprano 1

Soprano 2

Alto 1

Alto 2

Bb Instr.

Piano Adv.

Synthesizer

Guitar *Ac. Guitar (steel)*

Bass Guitar

Drum Set

Percussion *Shaker*

D B^{m7} E⁷ G⁶ D B^{m7} E⁷ G⁶ D B^{m7} E⁷ GmMaj7 G/A

Warm Pad

Shaker

© www.ChorusOnline.com / 0031 (0) 6 - 41 57 77 56

Chorus 1

22

S 1
tend Cause you can see it when I look at you And in this cra - - - zy li - fe and through these cra - - - zy times It's you it's you

S 2
know its true. Cause you can see it when I look at you And in this cra - - - zy li - fe and through these cra - - - zy times It's you it's you

A 1
know its true. Cause you can see it when I look at you And in this cra - - - zy li - fe and through these cra - - - zy times It's you it's you

A 2
tend Cause you can see it when I look at you And in this cra - - - zy li - fe and through these cra - - - zy times It's you it's you

Bb

P.A.
E⁷ G^m G/A D G A D B^{m7} G A D D⁷

Synth

Gtr.

Bass

D. S.

Perc.

Interlude 1

29

S 1
— you make me sing — you're e - vry line — you're e - vry word — you're e - vry - thing

S 2
— you make me sing — you're e - vry line — you're e - vry word — you're e - vry - thing

A 1
— you make me sing — you're e - vry word — you're e - vry - thing

A 2
— you make me sing — you're e - vry word — you're e - vry - thing

Bb

P.A.
G F^{#7} B^m D/A E⁷/G[#] G^mMaj⁷ D B^{m7} E⁷ G^mMaj⁷ G/A

Synth

Gtr.

Bass

D. S.

Perc.

50 *Chorus 2*

S 1 through and you know that's what our love can do And in this cra - - zy li - fe and through these cra - - zy times It's you it's you

S 2 through and you know that's what our love can do And in this cra - - zy li - fe and through these cra - - zy times It's you it's you

A 1 way and you know that's what our love can do And in this cra - - zy li - fe and through these cra - - zy times It's you it's you

A 2 way and you know that's what our love can do And in this cra - - zy li - fe and through these cra - - zy times It's you it's you

Bb *E⁷ G^m G/A D G A D B^{m7} G A D D⁷*

P.A.

Synth

Gtr.

Bass

D.S.

Perc.

57 *Interlude 1*

S 1 — you make me sing — you're e - vry line — you're e - vry word — you're e - vry - thing

S 2 — you make me sing — you're e - vry line — you're e - vry word — you're e - vry - thing

A 1 — you make me sing — you're e - vry word — you're e - vry - thing

A 2 — you make me sing — you're e - vry word — you're e - vry - thing

Bb *G F^{#7} B^m D/A E⁷/G[#] G^mMaj⁷ D^p B^{m7} E⁷ G^m G/A*

P.A. *For solo: see guitar score*

Synth

Gtr. *Open for solo ff*

Bass

D.S.

Perc.

Chorus 3

77

S 1
cra - - zy li - fe and through these cra - - zy times It's you it's you you make me sing you're e - vry line you're e - vry word

S 2
cra - - zy li - fe and through these cra - - zy times It's you it's you you make me sing you're e - vry line you're e - vry word

A 1
cra - - zy li - fe and through these cra - - zy times It's you it's you you make me sing you're e - vry line

A 2
cra - - zy li - fe and through these cra - - zy times It's you it's you you make me sing you're e - vry line

Bb

P.A.
A B E C#m7 A B E E7 A G#7 C#m E/B F#7/A#

Synth

Gtr.

Bass

D. S.

Perc.

84

S 1
you're e - vry - thing cause you're my e - vry - thing

S 2
you're e - vry - thing you're e - vry song. cause you're my e - vry - thing

A 1
e - vry - thing you're e - vry song. and I sing a - long. (Solo)

A 2
e - vry - e - - vry - thing

Bb

P.A.
AmMaj7 C#m C#m7/B F# AmMaj7 A/B
We prefer Guitar playing this part

Synth

Gtr.

Bass

D. S.

Perc.



03 SSAA Combo Eb

Everything

Words and Music by M. Publé, A. Chang
Arranged by Hans Reintjes
Original Key

DEMO

EVERYTHING

SOPRANO

ALTO

BASS

Intro $\text{♩} = 124$

Soprano 1

Soprano 2

Alto 1

Alto 2

Eb Instr.

Piano Adv.

Synthesizer

Guitar *Ac. Guitar (steel)*

Bass Guitar

Drum Set

Percussion *Shaker*

D B^{m7} E⁷ G⁶ D B^{m7} E⁷ G⁶ D B^{m7} E⁷ GmMaj7 G/A

Warm Pad

© www.ChorusOnline.com / 0031 (0) 6 - 41 57 77 56

Chorus 1

22

S 1
tend Cause you can see it when I look at you And in this cra - - zy li - fe and through these cra - - zy times It's you it's you

S 2
know its true. Cause you can see it when I look at you And in this cra - - zy li - fe and through these cra - - zy times It's you it's you

A 1
know its true. Cause you can see it when I look at you And in this cra - - zy li - fe and through these cra - - zy times It's you it's you

A 2
tend Cause you can see it when I look at you And in this cra - - zy li - fe and through these cra - - zy times It's you it's you

Eb
E⁷ G^m G/A D G A D B^{m7} G A D D⁷

P.A.
Synth
Gtr.
Bass
D. S.
Perc.

Interlude 1

29

S 1
— you make me sing — you're e - vry line — you're e - vry word — you're e - vry - thing

S 2
— you make me sing — you're e - vry line — you're e - vry word — you're e - vry - thing

A 1
— you make me sing — you're e - vry word — you're e - vry - thing

A 2
— you make me sing — you're e - vry word — you're e - vry - thing

Eb
G F^{#7} B^m D/A E⁷/G[#] G^mMaj⁷ D B^{m7} E⁷ G^mMaj⁷ G/A

P.A.
Synth
Gtr.
Bass
D. S.
Perc.

50 *Chorus 2*

S 1 through and you know that's what our love can do And in this cra - - zy li - fe and through these cra - - zy times It's you it's you

S 2 through and you know that's what our love can do And in this cra - - zy li - fe and through these cra - - zy times It's you it's you

A 1 way and you know that's what our love can do And in this cra - - zy li - fe and through these cra - - zy times It's you it's you

A 2 way and you know that's what our love can do And in this cra - - zy li - fe and through these cra - - zy times It's you it's you

E♭

P.A. *E⁷ G^m G/A D G A D B^{m7} G A D D⁷*

Synth

Gtr.

Bass

D. S.

Perc.

57 *Interlude 1*

S 1 — you make me sing — you're e - vry line — you're e - vry word — you're e - vry - thing

S 2 — you make me sing — you're e - vry line — you're e - vry word — you're e - vry - thing

A 1 — you make me sing — you're e - vry word — you're e - vry - thing

A 2 — you make me sing — you're e - vry word — you're e - vry - thing

E♭

P.A. *G F#⁷ B^m D/A E⁷/G# G^mMaj⁷ D^p B^{m7} E⁷ G^m G/A*
For solo: see guitar score

Synth

Gtr. *Open for solo*
ff

Bass

D. S.

Perc.

Everything 7

03 SSAA Combo Eb

78

S 1
fe and through these cra - - - zy times It's you it's you you make me sing you're e - vry line you're e - vry word you're e - vry

S 2
fe and through these cra - - - zy times It's you it's you you make me sing you're e - vry line you're e - vry word you're e - vry

A 1
fe and through these cra - - - zy times It's you it's you you make me sing you're e - vry line

A 2
fe and through these cra - - - zy times It's you it's you you make me sing you're e - vry line

Eb

P.A.
E C#m7 A B E E7 A G#7 C#m E/B F#7/A# AmMaj7

Synth

Gtr.

Bass

D. S.

Perc.

85

S 1
thing cause you're my e - vry - thing

S 2
thing you're e - vry song. (Solo) cause you're my e - vry - thing

A 1
e - vry - - - thing you're e - vry song. and I sing a - long.

A 2
e - vry - - - e - - - vry - thing

Eb

P.A.
C#m C#m7/B F# AmMaj7 A/B
We prefer Guitar playing this part

Synth

Gtr.

Bass

D. S.

Perc.

04 SSAA 4 extra staves

Everything

Words and Music by M. Bublé, A. Chang
Arranged by Hans Reintjes
Original Key

Intro $\text{♩} = 124$

Soprano 1

Soprano 2

Alto 1

Alto 2

1

2

3

4

D Bm⁷ E⁷ G⁶ D Bm⁷ E⁷ G⁶ D Bm⁷ E⁷ Gm/A⁷ G/A D G/A D Bm⁷ E⁷

Piano Adx. *Warm Pad*

Synthesizer

Guitar *Ac. Guitar (Lead)*

Bass Guitar

Drum Set *Snare*

Percussion *Congas/Low*

You're a fal - ling star you're the get a - way car - you're the line
You're a fal - ling star you're the get a - way car - you're the line

Chorus 1

10

S 1
smile at me you know ex-act-ly what you do ba-by don't pre . . . tend Cause you can see it when I look at you And in— this cra . . . zy — ll - fe and through these cra . . . zy times

S 2
smile at me you know ex-act-ly what you do ba-by don't pre-tend that you don't know its true Cause you can see it when I look at you And in— this cra . . . zy — ll - fe and through these cra . . . zy times

A1
smile at me you know ex-act-ly what you do ba-by don't - pre-tend that you don't know its true Cause you can see it when I look at you And in— this cra . . . zy — ll - fe and through these cra . . . zy times

A2
smile at me you know ex-act-ly what you do ba-by don't pre . . . tend Cause you can see it when I look at you And in— this cra . . . zy — ll - fe and through these cra . . . zy times

1
2
3
4

G^m G/A D G/A D B^m7 E⁷ G^m G/A D G A A D B^m7 G A

Dr.
Synth
P.A.
Gtr.
Bass
D. S.
Perc.

37 Verse 2

S 1 *p* Yes you are Yes you are You light me up Yes you are Yes you are And I can't

S 2 *p* Yes you are Yes you are You light me up Yes you are Yes you are And I can't

A1 *p* rou - sel, you're a wi - shing well, and you light me up, when you ring my bell, — You're a mis - te - ry, you're from ou - ter space, you're e - vry mi - nute of my e - vry day — And I can't

A2 rou - sel, you're a wi - shing well, and you light me up, when you ring my bell, — You're a mis - te - ry, you're from ou - ter space, you're e - vry mi - nute of my e - vry day — And I can't

1

2

3

4

D Bm7 E7 G G/A D G/A D Bm7 E7 G G/A D G/A

Synth 8 8 8 8

Dr. Perc.

Bass

Gtr.

D. S.

Everything 7

04 SS/AA 4 extra staves

Interlude 1

54

S 1
fe and through these cra - zy times - It's you - it's you - you make me sing - you're e - vry line - you're e - vry - thing

S 2
fe and through these cra - zy times - It's you - it's you - you make me sing - you're e - vry line - you're e - vry - thing

A1
fe and through these cra - zy times - It's you - it's you - you make me sing - you're e - vry word - you're e - vry - thing

A2
fe and through these cra - zy times - It's you - it's you - you make me sing - you're e - vry word - you're e - vry - thing

1
2
3
4

D Bm7 G A D D7 G F#7 Bm D/A E7/G# Gm/Maj7 D Bm7 E7

For solo, see guitar score

Synth
8 8

Gtr.
Open for solo *ff*

Bass

D. S.

Perc.

Interlude 3

Coda

02

S 1 cause you're my e - v'ry - thing So — la la la la la la la —

S 2 cause you're my e - v'ry - thing So — la la la la la la la —

A 1 cause you're my e - v'ry - thing cause you're my e - v'ry - thing — So — la la la la la la la —

A 2 cause you're my e - v'ry - thing cause you're my e - v'ry - thing — So — la la la la la la la —

1

2

3

4

E C#m7 F#7 A° E C#m7 F#7 A° E C#m7 F#7 Am/Maj7 A/B

PA

Synth

Gr.

Bass

D. S.

Perc.

05 SSAA small Combo



Everything

Words and Music by M. Bubl , A. Chang
Arranged by Hans Reintjes
Original Key

DEMO

VEEP

SONGS

Intro $\text{♩} = 124$

Soprano 1

Soprano 2

Alto 1

Alto 2

Piano Adv.

Guitar *Ac. Guitar (steel)*

Bass Guitar

Drum Set

Percussion *Shaker*

D Bm7 E7 G6 D Bm7 E7 G6 D Bm7

© www.ChorusOnline.com / 0031 (0) 6 - 41 57 77 56

16

S 1
S 2
A 1
A 2

And you play it coy but its kind a cute. Ah, when you smile at me you know ex-act-ly what you do ba-by don't

—
—
—
—

D G/A D Bm⁷ E⁷ G^m G/A D G/A

P.A.
Gtr.
Bass
D. S.
Perc.

21

S 1
S 2
A 1
A 2

pre - - - tend Cause you can see it when I look at you And in_ this cra - - - zy_ li -

pre-tend that you don't know its true. Cause you can see it when I look at you And in_ this cra - - - zy_ li -

pre-tend that you don't know its true. Cause you can see it when I look at you And in_ this cra - - - zy_ li -

—
—
—
—

D Bm⁷ E⁷ G^m G/A D G A

Chorus 1

P.A.
Gtr.
Bass
D. S.
Perc.

36 *Verse 2*

S 1 *p* Yes you are Yes you are You light me up

S 2 *p* Yes you are Yes you are You light me up

A1 You're a ca - rou - sel, you're a wi - shing well, and you light me up, when you ring my bell. — You're a mis -

A2 You're a ca - rou - sel, you're a wi - shing well, and you light me up, when you ring my bell. — You're a mis -

D G/A D Bm7 E7 G G/A D G/A

P.A.

Gtr.

Bass

D. S.

Perc.

41

S 1 Yes you are Yes you are And I can't be - lieve, uh that I'm

S 2 Yes you are Yes you are And I can't be - lieve, uh that I'm

A1 te - ry, you're from ou - ter space, you're e - v'ry mi - nute of my e - v'ry day. — And I can't be - lieve, uh that I'm

A2 te - ry, you're from ou - ter space, you're e - v'ry mi - nute of my e - v'ry day. — And I can't be - lieve, uh that I'm

D Bm7 E7 G G/A D G/A D Bm7

P.A.

Gtr.

Bass

D. S.

Perc.

56

S 1
— It's you — it's you — you make me sing — you're e - v'ry line — you're e - v'ry word — you're e - v'ry - thing

S 2
— It's you — it's you — you make me sing — you're e - v'ry line — you're e - v'ry word — you're e - v'ry - thing

A 1
— It's you — it's you — you make me sing — you're e - v'ry word — you're e - v'ry - thing

A 2
— It's you — it's you — you make me sing — you're e - v'ry word — you're e - v'ry - thing

P.A.
D D⁷ G F^{#7} B^m D/A E⁷/G[#] GmMaj7

Gtr.
8

Bass

D. S.

Perc.

61

Interlude 1 *Interlude 1*

S 1
you're e - v'ry - thing

S 2
you're e - v'ry - thing

A 1
you're e - v'ry - thing

A 2
you're e - v'ry - thing

P.A.
D Bm⁷ E⁷ G^m G/A D G/A D Bm⁷
For solo: see guitarscore

Gtr.
8
Open for solo
ff

Bass

D. S.

Perc.

Chorus 3

77

S 1
cra - - - zy li - fe and through these cra - - - zy times It's you it's you you make me sing

S 2
cra - - - zy li - fe and through these cra - - - zy times It's you it's you you make me sing

A 1
cra - - - zy li - fe and through these cra - - - zy times It's you it's you you make me sing

A 2
cra - - - zy li - fe and through these cra - - - zy times It's you it's you you make me sing

P.A.
A B E C#m7 A B E E7 A G#7

Gtr.
8

Bass

D. S.

Perc.

82

S 1
you're e - v'ry line you're e - v'ry word you're e - v'ry - thing

S 2
you're e - v'ry line you're e - v'ry word you're e - v'ry - thing

A 1
you're e - v'ry line e - v'ry - - - thing

A 2
you're e - v'ry line e - v'ry - - - e - - - v'ry -

P.A.
C#m E/B F#7/A# AmMaj7 C#m C#m7/B

Gtr.
8

Bass

D. S.

Perc.

96 *Coda*

S 1
la la la la la la la So

S 2
la la la la la la la So

A 1
la la la la la la la So

A 2
la la la la la la la So

E C#m7 F#7 AmMaj7 A/B E A/B

P.A.
Gtr.
Bass
D. S.
Perc.

100 *rit.*

S 1
la la la la la la la la la la la la

S 2
la la la la la la la la la la la la

A 1
la la la la la la la la la la la la

A 2
la la la la la la la la la la la la

E C#m7 F#7 A^m E

P.A.
Gtr.
Bass
D. S.
Perc.

06 SSAA small Combo extra staves

Everything

Words and Music by M. Bubl , A. Chang
Arranged by Hans Reintjes
Original Key

Intro

$\text{♩} = 124$

Verse 1

Soprano 1

Soprano 2

Alto 1

Alto 2

Piano Adv.

Guitar

Bass Guitar

Drum Set

Percussion

1

2

D Bm7 E7 G6 D Bm7 E7 G6 D Bm7 E7 G6 D Bm7 E7 G6 D Bm7 E7 G6 D Bm7 E7 G6 D Bm7

Ac. Guitar (Steel)

Slacker

You're a fal - ling star you're the get
you're a fal - ling star you're the get

16

S1
And you play it coy but its kind a cute. Ah, when you smile at me you know ex-act-ly what you do ba-by don't - - pre - -

S2
And you play it coy but its kind a cute. Ah, when you smile at me you know ex-act-ly what you do ba-by don't - - pre-tend that you don't

A1
And you play it coy but its kind a cute. Ah, when you smile at me you know ex-act-ly what you do ba-by don't - - pre-tend that you don't

A2
And you play it coy but its kind a cute. Ah, when you smile at me you know ex-act-ly what you do ba-by don't - - pre - -

1
2

D G/A D Bm7 E7 Gm G/A D G/A D Bm7

PA
Gtr.
8

Bass

D. S.

Perc.

Interlude 1

28

S 1
It's you — it's you — you make me sing — you're e - v'ry line — you're e - v'ry - thing

S 2
— It's you — it's you — you make me sing — you're e - v'ry line — you're e - v'ry - thing

A 1
— It's you — it's you — you make me sing — you're e - v'ry line — you're e - v'ry - thing

A 2
— It's you — it's you — you make me sing — you're e - v'ry line — you're e - v'ry - thing

1

2

PA
D D7 G F#7 Bm D/A E7/G# Gm(maj7) D Bm7 E7

Gtr.
8

Bass

D. S.

Perc.

Everything 7
06 SSA small Combo extra staves

41

S 1 Yes you are Yes you are
And I can't be- lieve, uh that I'm your man, and I

S 2 Yes you are Yes you are
And I can't be- lieve, uh that I'm your man, and I

A 1 te- ry, you're from ou - ter space, you're e - v'ry mi- nute of my e - v'ry day — And I can't be- lieve, uh that I'm your man, and I

A 2 te- ry, you're from ou - ter space, you're e - v'ry mi- nute of my e - v'ry day — And I can't be- lieve, uh that I'm your man, and I

1

2

D Bm7 E7 G G/A D G/A D Bm7 E7

PA

Gtr. 8

Bass

D. S.

Perc.

Chorus 2

S 1

cra - zy - li - fe and through these cra - zy times - It's you - it's you - you make me sing - you're e - v'ry line - you're e - v'ry word

S 2

cra - zy - li - fe and through these cra - zy times - It's you - it's you - you make me sing - you're e - v'ry line - you're e - v'ry word

A 1

cra - zy - li - fe and through these cra - zy times - It's you - it's you - you make me sing - you're e - v'ry word

A 2

cra - zy - li - fe and through these cra - zy times - It's you - it's you - you make me sing - you're e - v'ry word

1

2

PA

G A D Bm7 G A D D7 G F#7 Bm D/A E7/G#

Gtr.

Bass

D. S.

Perc.

Everything 11
06 SSAA small Combo extra staves

Interlude 2

67

S1
S2
A1
A2

So — la la la la la la la
So — la la la la la la la
So la la la
So la la la

1
2

PA

Gm G/A D D Bm7 E7 Gm G/A D G/A D Bm7

Gtr.
Bass
D. S.
Perc.

87

S1 — you make me sing — you're e - v'ry line — you're e - v'ry word — you're e - v'ry - thing —

S2 — you make me sing — you're e - v'ry line — you're e - v'ry word — you're e - v'ry - thing —

A1 — you make me sing — you're e - v'ry line — you're e - v'ry word — you're e - v'ry - thing —

A2 — you make me sing — you're e - v'ry line — you're e - v'ry word — you're e - v'ry - thing —

1

2

PA

A G#7 C#m E/B F#7/A# Am/Vaj7 C#m C#m7/B

Gtr. 8

Bass

D. S.

Perc.

Everything 15
06 SSA small Combo extra staves

Coda

9/4

S1
So — la la la la la la la la — So

S2
So — la la la la la la la la — So

A1
So — la la la la la la la la — So

A2
cause you're my e - vry - thing — So — la la la la la la la la — So

1
2

E C#m7 F#7 A6 E C#m7 F#7 AmMaj7 A/B E A/B

PA
Gtr.
Bass
D. S.
Perc.

Everything

Words and Music by M. Bubl , A. Chang
 Arranged by Hans Reintjes
 Original Key



Intro   = 124

D Bm7 E7 G6 D Bm7 E7 G6 D Bm7 E7

Piano Adv.

Verse 1

S 1

S 2

A 1

A 2

P.A

You're a fal - ling star you're the get a - way car_ you're the line_ in the sand When I go

GmMaj7 G/A D G/A D Bm7 E7 G A7sus4

S 1

S 2

A 1

A 2

P.A

And you play

And you play

too far You're the swim - ming pool, on an Au - gust day . And you're the per - fect thing_ to say_ And you play

too far You're the swim - ming pool, on an Au - gust day . And you're the per - fect thing_ to say_ And you play

D G/A D Bm7 E7 G A7sus4 D G/A

Interlude 1

32

S 1
you're e - v'ry - thing

S 2
you're e - v'ry - thing

A 1
you're e - v'ry - thing

A 2
you're e - v'ry - thing

P.A.
GmMaj7 D Bm7 E7 GmMaj7 G/A D G/A

You're a ca-

You're a ca-

37 Verse 2

S 1
p Yes you are Yes you are You light me up

S 2
p Yes you are Yes you are You light me up

A 1
rou - sel, you're a wi - shing well, and you light me up, when you ring my bell. — You're a mis -

A 2
rou - sel, you're a wi - shing well, and you light me up, when you ring my bell. — You're a mis -

P.A.
D Bm7 E7 G G/A D G/A

41

S 1
Yes you are Yes you are And I can't be-lieve, uh that I'm

S 2
Yes you are Yes you are And I can't be-lieve, uh that I'm

A 1
te-ry, you're from ou - ter space, you're e - v'ry mi - nute of my e - v'ry day. — And I can't be-lieve, uh that I'm

A 2
te-ry, you're from ou - ter space, you're e - v'ry mi - nute of my e - v'ry day. — And I can't be-lieve, uh that I'm

P.A.
D Bm7 E7 G G/A D G/A D Bm7

Interlude 1

61

S 1

S 2

A 1

A 2

P.A

you're e - v'ry - thing

you're e - v'ry - thing

you're e - v'ry - thing

you're e - v'ry - thing

you're e - v'ry - thing

D B^{m7} E⁷ G^m G/A D G/A D B^{m7} E⁷

For solo: see guitar score

Interlude 2

67

S 1

S 2

A 1

A 2

P.A

So — la la la la la la — So

So — la la la la la la — So

So

So

G^m G/A D D B^{m7} E⁷ G^m G/A D G/A

Chorus 3

73

S 1

S 2

A 1

A 2

P.A

la la la la la la — And in — this cra - - - zy li -

la la la la la la — And in — this cra - - - zy li -

la la la la la la — And in — this cra - - - zy li -

la la la la la la — And in — this cra - - - zy li -

D B^{m7} E⁷ G^m G/A D A B

Interlude 3

92

S 1
cause you're my e - v'ry - thing So ___

S 2
So ___

A 1
cause you're my e - v'ry - thing

A 2
cause you're my e - v'ry - thing cause you're my e - v'ry - thing So ___

P.A
E C#m7 F#7 A6 E C#m7 F#7 A6

Coda

96

S 1
la la la la la la So

S 2
la la la la la la So

A 1
la la la la la la So

A 2
la la la la la la So

P.A
E C#m7 F#7 AmMaj7 A/B E A/B

100

rit.

S 1
la la la la la la la la la

S 2
la la la la la la la la la

A 1
la la la la la la la la la

A 2
la la la la la la la la la

P.A
E C#m7 F#7 A^m E

Everything



Words and Music by M. Bubl , A. Chang
 Arranged by Hans Reintjes
 Original Key

Intro

♩ = 124

Piano Mod.

D Bm7 E7 G6 D Bm7 E7 G6 D Bm7 E7

Verse 1

S 1

S 2

A 1

A 2

P. M.

You're a fal - ling star you're the get a - way car_ you're the line_ in the sand When I go

GmMaj7 G/A D G/A D Bm7 E7 G A7sus4

S 1

S 2

A 1

A 2

P. M.

And you play

And you play

too far You're the swim - ming pool, on an Au - gust day . And you're the per - fect thing_ to say_ And you play

too far You're the swim - ming pool, on an Au - gust day . And you're the per - fect thing_ to say_ And you play

D G/A D Bm7 E7 G A7sus4 D G/A

Interlude 1

31

S 1
— you're e - v'ry word — you're e - v'ry - thing

S 2
— you're e - v'ry word — you're e - v'ry - thing

A1
— you're e - v'ry word — you're e - v'ry - thing

A 2
— you're e - v'ry word — you're e - v'ry - thing

P. M
E⁷/G# GmMaj7 D B^{m7} E⁷ GmMaj7 G/A

36

Verse 2

S 1
p Yes you are Yes you are You light me up

S 2
p Yes you are Yes you are You light me up

A1
You're a ca - rou-sel, you're a wi - shing well, and you light me up, when you ring my bell. — You're a mis-

A 2
You're a ca - rou-sel, you're a wi - shing well, and you light me up, when you ring my bell. — You're a mis-

P. M
D G/A D B^{m7} E⁷ G G/A D G/A

41

S 1
Yes you are Yes you are And I can't be-lieve, uh that I'm

S 2
Yes you are Yes you are And I can't be-lieve, uh that I'm

A1
te-ry, you're from ou - ter space, you're e - v'ry mi-nute of my e - v'ry day. — And I can't be-lieve, uh that I'm

A 2
te-ry, you're from ou - ter space, you're e - v'ry mi-nute of my e - v'ry day. — And I can't be-lieve, uh that I'm

P. M
D B^{m7} E⁷ G G/A D G/A D B^{m7}

Interlude 1

61

S 1

S 2

A 1

A 2

P. M

you're e - v'ry - thing

you're e - v'ry - thing

you're e - v'ry - thing

you're e - v'ry - thing

For solo: see guitarscore

D B^{m7} E⁷ G^m G/A D G/A D B^{m7} E⁷

Interlude 2

67

S 1

S 2

A 1

A 2

P. M

So — la la la la la la la — So

So — la la la la la la la — So

So

So

G^m G/A D D B^{m7} E⁷ G^m G/A D G/A

Chorus 3

73

S 1

S 2

A 1

A 2

P. M

la la la la la la la — And in — this cra - - - zy li -

la la la la la la la — And in — this cra - - - zy li -

la la la la la la la — And in — this cra - - - zy li -

la la la la la la la — And in — this cra - - - zy li -

D B^{m7} E⁷ G^m G/A D A B

93

S 1
cause you're my e - v'ry - thing So ___

S 2
So ___

A 1
cause you're my e - v'ry - thing ___ So ___

A 2
So ___

P. M
F#7 A6 E C#m7 F#7 A6

96 *Coda*

S 1
la la la la la la la So

S 2
la la la la la la la So

A 1
la la la la la la la So

A 2
la la la la la la la So

P. M
E C#m7 F#7 AmMaj7 A/B E A/B

100 *rit.*

S 1
la la la la la la la la la la

S 2
la la la la la la la la la la

A 1
la la la la la la la la la la

A 2
la la la la la la la la la la

P. M
E C#m7 F#7 A^m E

Everything

Words and Music by M. Bubl , A. Chang
Arranged by Hans Reintjes
Original Key

Intro

$\text{♩} = 124$

Alto 1
You're a fal - ling star you're the get a - way car _ you're the line

Alto 2
You're a fal - ling star you're the get a - way car _ you're the line

11

A1
_ in the sand When I go too far _ You're the swim - ming pool, on an Au -

A2
_ in the sand When I go too far _ You're the swim - ming pool, on an Au -

14

S 1
And you play it coy but its kind

S 2
And you play it coy but its kind

A1
gust day . And you're the per - fect thing to say _ And you play it coy but its kind

A2
gust day . And you're the per - fect thing to say _ And you play it coy but its kind

28

S 1
— It's you — it's you — you make me sing — you're e - v'ry line — you're e - v'ry word

S 2
— It's you — it's you — you make me sing — you're e - v'ry line — you're e - v'ry word

A 1
— It's you — it's you — you make me sing — you're e - v'ry word

A 2
— It's you — it's you — you make me sing — you're e - v'ry word

32

Interlude 1 **2** *Verse 2*

S 1
— you're e - v'ry - thing **2** *p* Yes you are

S 2
— you're e - v'ry - thing **2** *p* Yes you are

A 1
— you're e - v'ry - thing **2** You're a ca - rou - sel, you're a wi -

A 2
— you're e - v'ry - thing **2** You're a ca - rou - sel, you're a wi -

38

S 1
Yes you are You light me up

S 2
Yes you are You light me up

A 1
shing well, and you light me up, when you ring my bell. — You're a mis -

A 2
shing well, and you light me up, when you ring my bell. — You're a mis -

Chorus 2

51

S 1
that's what our love can do ___ And in this cra - zy ___ li - fe and through these

S 2
that's what our love can do ___ And in this cra - zy ___ li - fe and through these

A 1
that's what our love can do ___ And in this cra - zy ___ li - fe and through these

A 2
that's what our love can do ___ And in this cra - zy ___ li - fe and through these

55

S 1
cra - zy times ___ It's you ___ it's you ___ you make me sing ___ you're e - v'ry line

S 2
cra - zy times ___ It's you ___ it's you ___ you make me sing ___ you're e - v'ry line

A 1
cra - zy times ___ It's you ___ it's you ___ you make me sing

A 2
cra - zy times ___ It's you ___ it's you ___ you make me sing

Interlude 1

59

S 1
— you're e - v'ry word ___ you're e - v'ry-thing you're e - v'ry-thing

S 2
— you're e - v'ry word ___ you're e - v'ry-thing you're e - v'ry-thing

A 1
— you're e - v'ry word ___ you're e - v'ry-thing you're e - v'ry-thing

A 2
— you're e - v'ry word ___ you're e - v'ry-thing you're e - v'ry-thing

82

S 1
— you're e - v'ry line — you're e - v'ry word — you're e - v'ry - thing

S 2
— you're e - v'ry line — you're e - v'ry word — you're e - v'ry - thing

A 1
— you're e - v'ry line — e - v'ry - thing

A 2
— you're e - v'ry line — e - v'ry - e - v'ry -

87

S 1
— cause you're my e - v'ry - thing

S 2
— you're e - v'ry song. — cause you're my e - v'ry - thing

A 1
— you're e - v'ry song. (Solo) —

A 2
— you're e - v'ry song. — and I sing a - long, —

thing

Interlude 3

92

S 1
— cause you're my e - v'ry - thing

S 2
—

A 1
— cause you're my e - v'ry - thing — cause you're my e - v'ry - thing

A 2
— cause you're my e - v'ry - thing —



10 C Instrument

Everything

Words and Music by M. Bubl , A. Chang
Arranged by Hans Reintjes
Original Key

Intro

♩ = 124

Verse 1

17

Chorus 1

29

Interlude 1

36

p

Verse 2

49

Chorus 2

55

p

Instr. Solo

62

Interlude 2

66

70



11 Bb Instrument

Everything

Words and Music by M. Bubl , A. Chang
Arranged by Hans Reintjes
Original Key

Intro $\text{♩} = 124$ **4**

Verse 1 **8**

Chorus 1 **7**

Interlude 1 **2**

Verse 2 **8** *p*

Chorus 2

Instr. Solo **2** *p*

Interlude 2

70



12 Eb Instrument

Everything

Words and Music by M. Bubl , A. Chang
Arranged by Hans Reintjes
Original Key

Intro

♩ = 124

4

Verse 1

9

8

7

Chorus 1

Interlude 1

27

2

Verse 2

34

8

p

Chorus 2

53

2

Instr. Solo

60

p

65

Interlude 2

69



13 Piano Advanced

Everything

Words and Music by M. Bublé, A. Chang
Arranged by Hans Reintjes
Original Key

Intro

♩ = 124

D Bm7

E7 G6 D Bm7 E7

GmMaj7 G/A Verse 1

© www.ChorusOnline.com / 0031 (0) 6 - 41 57 77 56





14 Piano Moderated

Everything

Words and Music by M. Bublé, A. Chang
Arranged by Hans Reintjes
Original Key

Intro $\text{♩} = 124$

D B^{m7} E⁷ G⁶ D B^{m7}

E⁷ G⁶ D B^{m7} E⁷

Verse 1

G^{mMaj7} G/A D G/A D B^{m7} E⁷

G A^{7sus4} D G/AD B^{m7} E⁷ G A^{7sus4}



15 Synthesizer

Everything

Words and Music by M. Bubl , A. Chang
Arranged by Hans Reintjes
Original Key

Intro

♩ = 124

Warm Pad

Verse 1

Chorus 1

© www.ChorusOnline.com / 0031 (0) 6 - 41 57 77 56



16 Guitar

Everything

Words and Music by M. Bublé, A. Chang
Arranged by Hans Reintjes
Original Key

Intro ♩ = 124 Ac. Guitar (steel)

D Bm7 E7 G6 D Bm7 E7 G6

D Bm7 E7 GmMaj7 G/A D G/A

Verse 1

D Bm7 E7 G A7sus4 D G/A D Bm7

E7 G A7sus4 D G/A D Bm7 E7

Gm G/A D G/A D Bm7 E7

Chorus 1

Gm G/A D G A D Bm7 G A



17 Bass Guitar

Words and Music by M. Bubl , A. Chang

Arranged by Hans Reintjes

Original Key

Everything

Intro

$\text{♩} = 124$ **3**

D B^{m7} E⁷ G^mMaj⁷ G/A

Verse 1

8 D G/A D B^{m7} E⁷ G A⁷sus⁴ D G/A

13 D B^{m7} E⁷ G A⁷sus⁴ D G/A D B^{m7}

18 E⁷ G^m G/A D G/A D B^{m7} E⁷

Chorus 1

23 G^m G/A D G A D B^{m7} G A

28 D D⁷ G F^{#7} B^m D/A E⁷/G[#] G^mMaj⁷

Interlude 1

33 D B^{m7} E⁷ G^mMaj⁷ G/A D G/A

Verse 2

38 E⁷ G G/A D G/A D B^{m7} E⁷

43 G G/A D G/A D B^{m7} E⁷ G^m G/A

48 D G/A D B^{m7} E⁷ G^m G/A D

© www.ChorusOnline.com / 0031 (0) 6 - 41 57 77 56

Drumkit/Percussion

High Tom
Hi-Hat closed
Hi-Hat open
Mid Tom
Low Tom
Ride Cymbal
Crash Cymbal
Triangle mute
Snareclick
Hi-Hat Foot
Bassdrum(Kick)
Snaredrum
Tambourine Beating
Triangle open

Detailed description: This staff of musical notation represents the first set of percussion instruments. It features a treble clef and a key signature of one sharp (F#). The notation includes various note values and rests, with specific symbols for each instrument: a vertical line with a slash for Hi-Hat closed, a vertical line with a slash and an 'x' for Hi-Hat open, a vertical line with a slash and a dot for Hi-Hat foot, a vertical line with a slash and a triangle for snare and tom drums, and vertical lines with slashes and asterisks for cymbals. Tambourine beating is indicated by a vertical line with a slash and a circle, and triangle open by a vertical line with a slash and a triangle.

Shaker(eggs)
Claves
High Timbale
Sleigh Bells
Bell Tree
Maracas
Wind Chimes
Handclap
Güiro
Woodblock High
Timbale Low
Agogo High
Cowbell
Conga
Cabasa
Woodblock Low
Agogo Low

Detailed description: This staff of musical notation represents the second set of percussion instruments. It features a treble clef and a key signature of one sharp (F#). The notation includes various note values and rests, with specific symbols for each instrument: a vertical line with a slash and a triangle for shakers, a vertical line with a slash and a triangle for claves, a vertical line with a slash and a triangle for high timbales, a vertical line with a slash and a triangle for sleigh bells, a vertical line with a slash and a triangle for bell trees, a vertical line with a slash and a triangle for maracas, a vertical line with a slash and a triangle for wind chimes, a vertical line with a slash and a triangle for handclaps, a vertical line with a slash and a triangle for güiros, a vertical line with a slash and a triangle for high woodblocks, a vertical line with a slash and a triangle for low timbales, a vertical line with a slash and a triangle for high agogos, a vertical line with a slash and a triangle for cowbells, a vertical line with a slash and a triangle for congas, a vertical line with a slash and a triangle for cabasas, a vertical line with a slash and a triangle for low woodblocks, and a vertical line with a slash and a triangle for low agogos.



18 Drum Set

Everything

Words and Music by M. Bubl , A. Chang
Arranged by Hans Reintjes
Original Key

Intro

$\text{♩} = 124$

6

Verse 1

11

17

Chorus 1

25

30

Interlude 1

33

Verse 2

37

45

© www.ChorusOnline.com / 0031 (0) 6 - 41 57 77 56

Drumkit/Percussion

Hi-Hat closed
Hi-Hat open
Snareclick
Bassdrum(Kick)
Snaredrum
Hi-Hat Foot
High Tom
Mid Tom
Low Tom
Floor Tom
Ride Cymbal
Ride Bell/Cup
Crash Cymbal
Splash Cymbal
Triangle mute
Tambourine Beating
Triangle open

- Shaker(eggs)
- Claves
- High Timbale
- Sleigh Bells
- Bell Tree
- Maracas
- Wind Chimes

Cowbell
Conga Cabasa
Handclap
Guiro
Woodblock High
Woodblock Low
Timbale Low
Agogo High
Agogo Low



19 Percussion

Everything

Words and Music by M. Bubl , A. Chang
Arranged by Hans Reintjes
Original Key

Intro

♩ = 124

4

Shaker

Verse 1

9

Conga Low

Conga High

14

19

Chorus 1

24

Interlude 1

29

Verse 2

34

39

44

Everything

Words and Music by M. Bubl , A. Chang
 Arranged by Hans Reintjes
 Original Key

Intro ♩ = 124

D B^{m7} E⁷ G⁶ D B^{m7} E⁷ G⁶



D B^{m7} E⁷ G^{mMaj7} G/A D G/A



You're a fal-

Verse 1 D B^{m7} E⁷ G A^{7sus4}



ling star you're the get a - way car you're the line in the sand When I go

D G/A D B^{m7} E⁷



too far You're the swim - ming pool, on an Au - gust day . And you're the

G A^{7sus4} D G/A D B^{m7}



per - fect thing to say And you play it coy but its kind

E⁷ G^m G/A D G/A



a cute. Ah, when you smile at me you know ex - act - ly what you do ba - by don't

D B^{m7} E⁷ G^m G/A



pre - tend that you don't know its true. Cause you can see it when I look at you

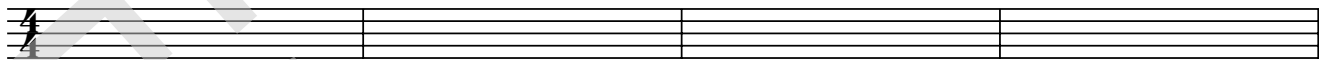


21 Empty paper

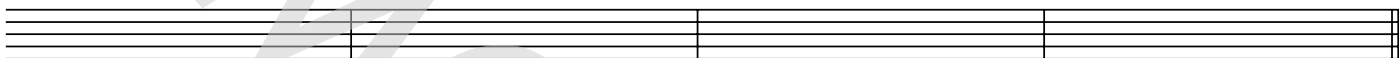
Everything

Words and Music by M. Bubl , A. Chang
Arranged by Hans Reintjes
Original Key

Intro ♩ = 124

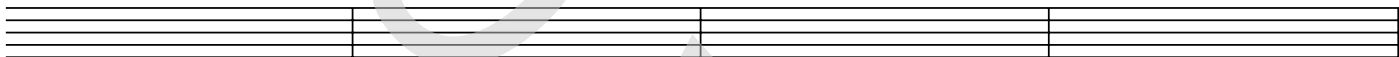


5

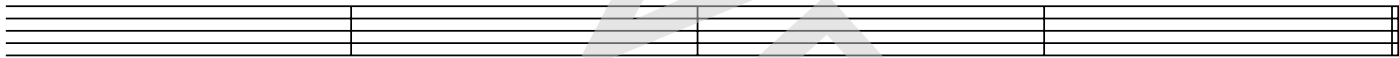


Verse 1

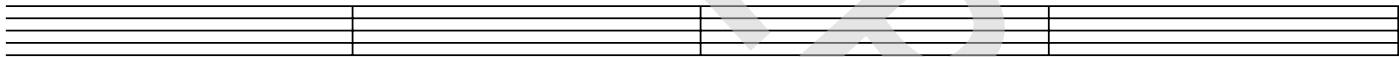
9



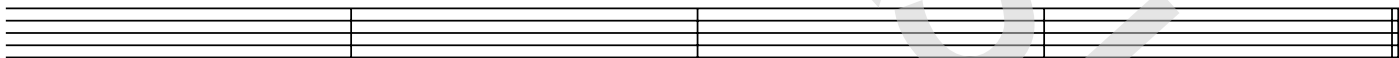
13



17

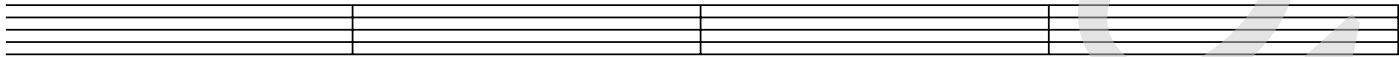


21

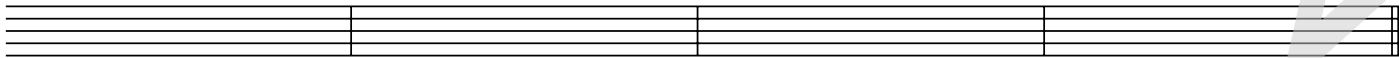


Chorus 1

25

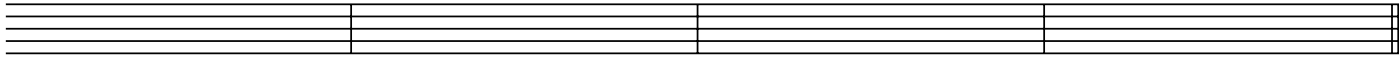


29



Interlude 1

33



© www.ChorusOnline.com / 0031 (0) 6 - 41 57 77 56

Everything

22 Lyrics

*Words and Music by M. Bubl , A. Chang
Arranged by Hans Reintjes
Original Key*

Verse 1 You're a falling star, You're the getaway car.
You're the line in the sand when I go too far.
You're the swimming pool, on an August day.
And you're the perfect thing to say.

And you play it coy, but it's kinda cute.
Ah, When you smile at me you know exactly what you do.
Baby don't pretend, that you don't know it's true.
Cause you can see it when I look at you.

Chorus And in this crazy life, and through these crazy times
It's you, it's you, You make me sing.
You're every line, you're every word, you're everything.

Interlude 1

Verse 2 You're a carousel, you're a wishing well,
And you light me up, when you ring my bell.
You're a mystery, you're from outer space,
You're every minute of my every day.

And I can't believe, uh that I'm your man,
And I get to kiss you baby just because I can.
Whatever comes our way, ah we'll see it through,
And you know that's what our love can do.

Chorus

Solo ... you're everything

Interlude 2 So, La, La, La, La, La, La, La, La (2x)

Chorus

.....You're every song, and I sing along.
'Cause you're my everything
('Cause you're my everything)

Coda

So, La, La, La, La, La, La, La, La
So, La, La, La, La, La, La, La, La, La, La