



## Big Yellow Taxi SSAA

Pag.

02	Full score combo C instrument
13	Full score combo Bb instrument
24	Full score combo Eb instrument
35	Full score combo 4 extra staves
50	Full score small combo
66	Full score small combo 2 extra staves
88	Full score vocals (SSAA) piano advanced
98	Full score vocals (SSAA) piano moderated
107	Vocals (SSAA)
117	C instrument
118	Bb instrument
119	Eb instrument
120	Piano advanced
128	Piano moderated
135	Synthesizer
140	Guitar
146	Bassguitar
149	Drumkit
153	Leadsheet in G (melody, lyrics, chords)
159	Leadsheet in Ab (melody, lyrics, chords) orig. key
165	Empty paper

The index numbers above are based on the original (complete) PDF-file.  
In this smaller DEMO-version, the numbers above do NOT match this file !



SSAA Combo C

# Big Yellow Taxi

Words & Music by Joni Mitchell  
Arrangement by Don Henken  
Original Key Ab Major

With a groovy feeling ♩ = 84

## Intro

The musical score for the 'Intro' section of 'Big Yellow Taxi' is arranged for SSAA Combo C. It features ten staves: Soprano 1, Soprano 2, Alto 1, Alto 2, C Instr., Piano Adv., Synthesizer, Guitar, Bass Guitar, and Drum Set. The key signature is one sharp (F#) and the time signature is 4/4. The tempo is marked as 'With a groovy feeling ♩ = 84'. The piano part includes the following chords: G Maj7(add2), C Maj7/G, G Maj7(add2), and C Maj7/G. The guitar part features a rhythmic pattern of eighth notes. The bass guitar part has a steady eighth-note accompaniment. The drum set part includes a snare drum and a bass drum pattern.

Verse 2

23

S 1 They took all the trees, and put them in a tree mu - - se - um

S 2 Woo \_\_\_\_\_ pap pap\_ pap Woo \_\_\_\_\_ pap pap\_ They took all the trees, and put them in a tree mu - - se - um

A 1 Woo \_\_\_\_\_ pap pap\_ pap Woo \_\_\_\_\_ pap pap\_ They took all the trees, and put them in a tree mu - - se - um

A 2 Woo \_\_\_\_\_ pap pap\_ pap Woo \_\_\_\_\_ pap pap\_ They took all the trees, and put them in a tree mu - - se - um

C

P.A. GMaj7(add2) CMaj7/G G(add2) CMaj7/G G(add2)

Synth

Gtr. 23

Bass

D.S. 2 2 2

Chorus 2

30

S 1 And charged the peo - ple a dol - lar and a half to see them. No, no, no. Don't it al - ways seem to go That you

S 2 And charged the peo - ple a dol - lar and a half to see them. No, no, no. Don't it al - ways seem to go That you

A 1 And charged the peo - ple a dol - lar and a half to see them. No, no, no. Don't it al - ways seem to go That you

A 2 And charged the peo - ple a dol - lar and a half to see them. No, no, no. Don't it al - ways seem to go That you

C

P.A. CMaj7/G C/D G(add2) G GMaj7

Synth

Gtr. 30

Bass

D.S. 2 2 2

# Big Yellow Taxi 5

SSAA Combo C

## Chorus 3

51

S 1  
bees Don't it al - ways seem \_\_\_ to go That you don't know what you've got \_\_\_ till it's gone? They paved par - a - dise, and

S 2  
bees Don't it al - ways seem \_\_\_ to go That you don't know what you got \_\_\_ till it's gone? They paved par - a - dise and

A 1  
bees please! Don't it al - ways seem \_\_\_ to go That you don't know what you got \_\_\_ till it's gone? They paved par - a - dise and

A 2  
bees please! Don't it al - ways seem \_\_\_ to go That you don't know what you got \_\_\_ till it's gone? They paved par - a - dise and

C

P.A.  
G(add2) G GMaj7 CMaj7/G G(add2) CMaj7

Synth

Gtr. 51

Bass

D. S. 2 2 2 2

59

S 1  
put up a park - ing lot. \_\_\_ Hey now, they've paved par - a - dise to put up a park - ing lot. \_\_\_ Why not?

S 2  
put up a par - king lot. \_\_\_ Hey now, they've paved par - a - dise to put up a par - king lot. \_\_\_ Woo \_\_\_ pap pap \_\_\_ pap

A 1  
put up a par - king lot. \_\_\_ Hey now, they've paved par - a - dise to put up a par - king lot. \_\_\_ Woo \_\_\_ pap pap \_\_\_ pap

A 2  
put up a par - king lot. \_\_\_ Hey now, they've paved par - a - dise to put up a par - king lot. \_\_\_ Woo \_\_\_ pap pap \_\_\_ pap

C

P.A.  
D(add2) GMaj7 CMaj7 D(add2) GMaj7(add2)

Synth

Gtr. 59

Bass

D. S. 2 2 2

# Big Yellow Taxi 7

SSAA Combo C

## Verse 4

79

S 1 Lis-ten, late last night, I heard the screendoor slam, And a big yel-low ta-xi

S 2 Lis-ten, late last night, I heard the screendoor slam, And a big yel-low ta-xi

A 1

A 2

C

P.A.  $E^m7$  G/D  $C^{Maj7}(add2)$   $C^{Maj7}(add2)$  G  $C6$

Synth

Gtr. 79

Bass

D.S.

## Chorus 4

90

S 1 took my man a-way. Now Don't it al-ways seem to go That you don't know what you've got till it's gone? They

S 2 took my man a-way. Ooh hoo Ooh hoo They

A 1 Ooh hoo Ooh hoo They

A 2 Ooh hoo Ooh hoo They

C

P.A.  $D(add2)$  G G  $G^{Maj7}$   $C(add2)$   $G(add2)$

Synth

Gtr. 90

Bass

D.S.

# Big Yellow Taxi 9

SSAA Combo C

113

S 1 lot. Hey hey\_ hey, paved par - a - dise and put up a par - king lot.

S 2 lot. Hey hey\_ hey, paved par - a - dise and put up a par - king lot. Woo\_ pap pap\_ pap Woo\_

A 1 lot. Hey hey\_ hey, paved par - a - dise and put up a par - king lot. Woo\_ pap pap\_ pap Woo\_

A 2 lot. Hey hey\_ hey, paved par - a - dise and put up a par - king lot. Woo\_ pap pap\_ pap Woo\_

C

P.A. GMaj7 CMaj7 D7(add2) GMaj7 CMaj7/G

Synth

Gr. 113

Bass

D. S.

## Coda

120

S 1

S 2 \_ pap pap\_ Hey, hey\_ hey. Now you wan - na give it, I \_

A 1 \_ pap pap\_ I don't wan - na give it, Why you wan - na give it, Why you wan - na giv - ing it all a - way? Hey, hey\_ hey. Now you wan - na give it, I \_

A 2 \_ pap pap\_ I don't wan - na give it, Why you wan - na give it, Why you wan - na giv - ing it all a - way? Hey, hey\_ hey. Now you wan - na give it, I \_

C

P.A. G CMaj7/G G(add2) CMaj7/G

Synth

Gr. 120

Bass

D. S.

Big Yellow Taxi 11  
SSAA Combo C

139

S 1  
Now, now! They paved par - a - dise to put in a par - king lot. \_\_\_\_\_

S 2  
Now, now! They paved par - a - dise to put up a par - king lot. \_\_\_\_\_

A 1  
Now, now! They paved par - a - dise to put up a par - king lot. \_\_\_\_\_

A 2  
Now, now! They paved par - a - dise to put up a par - king lot. \_\_\_\_\_

C

P.A.  
GMaj7(add2) CMaj7 D7(add2) G(add2)

Synth

Gtr.  
139

Bass

D. S.



SSAA Combo Bb

# Big Yellow Taxi

Words & Music by Joni Mitchell  
Arrangement by Don Henken  
Original Key Ab Major

With a groovy feeling ♩ = 84

### Intro

Musical score for SSAA Combo Bb, including parts for Soprano 1, Soprano 2, Alto 1, Alto 2, Bb Instr., Piano Adv., Synthesizer, Guitar, Bass Guitar, and Drum Set. The score includes a large 'DEMO' watermark and a 'KEEP' watermark.

Chord progression for Piano Adv. (measures 1-4):  
 Measure 1: GMaj7(add2)  
 Measure 2: CMaj7/G  
 Measure 3: GMaj7(add2)  
 Measure 4: CMaj7/G

© www.ChorusOnline.com / 0031 (0) 6 - 41 57 77 56



# Big Yellow Taxi 3

SSAA Combo Bb

## Verse 2

23

S 1 They took all the trees, and put them in a tree mu - - se - um

S 2 Woo \_\_\_\_\_ pap pap pap Woo \_\_\_\_\_ pap pap They took all the trees, and put them in a tree mu - - se - um

A 1 Woo \_\_\_\_\_ pap pap pap Woo \_\_\_\_\_ pap pap They took all the trees, and put them in a tree mu - - se - um

A 2 Woo \_\_\_\_\_ pap pap pap Woo \_\_\_\_\_ pap pap They took all the trees, and put them in a tree mu - - se - um

Bb

P.A. GMaj7(add2) CMaj7/G G(add2) CMaj7/G G(add2)

Synth

Gr. 23

Bass

D. S. 2 2 2

## Chorus 2

30

S 1 And charged the peo - ple a dol - lar and a half to see them. No, no, no. Don't it al - ways seem to go That you

S 2 And charged the peo - ple a dol - lar and a half to see them. No, no, no. Don't it al - ways seem to go That you

A 1 And charged the peo - ple a dol - lar and a half to see them. No, no, no. Don't it al - ways seem to go That you

A 2 And charged the peo - ple a dol - lar and a half to see them. No, no, no. Don't it al - ways seem to go That you

Bb

P.A. CMaj7/G C/D G(add2) G GMaj7

Synth

Gr. 30

Bass

D. S. 2 2 2

# Big Yellow Taxi 5

SSAA Combo Bb

## Chorus 3

51

S 1  
bees Don't it al - ways seem \_\_\_ to go That you don't know what you've got \_\_\_ till it's gone? They paved par - a - dise, and

S 2  
bees Don't it al - ways seem \_\_\_ to go That you don't know what you got \_\_\_ till it's gone? They paved par - a - dise and

A 1  
bees please! Don't it al - ways seem \_\_\_ to go That you don't know what you got \_\_\_ till it's gone? They paved par - a - dise and

A 2  
bees please! Don't it al - ways seem \_\_\_ to go That you don't know what you got \_\_\_ till it's gone? They paved par - a - dise and

Bb

P.A.  
G(add2) G GMaj7 CMaj7/G G(add2) CMaj7

Synth

Gtr. 51

Bass

D. S. 2 2 2 2

58

S 1  
put up a park - ing lot. \_\_\_ Hey now, they've paved par - a - dise to put up a park - ing lot. \_\_\_ Why not?

S 2  
put up a par - king lot. \_\_\_ Hey now, they've paved par - a - dise to put up a par - king lot. \_\_\_ Woo \_\_\_ pap pap \_\_\_ pap

A 1  
put up a par - king lot. \_\_\_ Hey now, they've paved par - a - dise to put up a par - king lot. \_\_\_ Woo \_\_\_ pap pap \_\_\_ pap

A 2  
put up a par - king lot. \_\_\_ Hey now, they've paved par - a - dise to put up a par - king lot. \_\_\_ Woo \_\_\_ pap pap \_\_\_ pap

Bb

P.A.  
D(add2) GMaj7 CMaj7 D(add2) GMaj7(add2)

Synth

Gtr. 58

Bass

D. S. 2 2 2

# Big Yellow Taxi 7

SSAA Combo Bb

## Verse 4

79

S 1 Lis-ten, late last night, I heard the screendoor slam, And a big yel-low ta-xi

S 2 Lis-ten, late last night, I heard the screendoor slam, And a big yel-low ta-xi

A 1

A 2

Bb

P.A. E<sup>m</sup>7 G/D CMaj7(add2) CMaj7(add2) G C6

Synth

Gr. 79

Bass

D. S.

## Chorus 4

90

S 1 took my man a-way. Now Don't it al-ways seem to go That you don't know what you've got till it's gone? They

S 2 took my man a-way. Ooh hoo Ooh hoo They

A 1 Ooh hoo Ooh hoo They

A 2 Ooh hoo Ooh hoo They

Bb

P.A. D(add2) G G GMaj7 C(add2) G(add2)

Synth

Gr. 90

Bass

D. S.

# Big Yellow Taxi 9

SSAA Combo Bb

113

S 1 lot. Hey hey — hey, paved par - a - dise and put up a par - king lot.

S 2 lot. Hey hey — hey, paved par - a - dise and put up a par - king lot. Woo — pap pap — pap Woo —

A 1 lot. Hey hey — hey, paved par - a - dise and put up a par - king lot. Woo — pap pap — pap Woo —

A 2 lot. Hey hey — hey, paved par - a - dise and put up a par - king lot. Woo — pap pap — pap Woo —

Bb

P.A. GMaj7 CMaj7 D7(add2) GMaj7 CMaj7/G

Synth

Gr. 113

Bass

D. S.

## Coda

120

S 1 — pap pap — Hey, hey, — hey. Now you wan - na give it, I —

S 2 — pap pap — I don't wan - na give it, Why you wan - na give it, Why you wan - na giv - ing it all — a - way? Hey, hey, — hey. Now you wan - na give it, I —

A 1 — pap pap — I don't wan - na give it, Why you wan - na give it, Why you wan - na giv - ing it all — a - way? Hey, hey, — hey. Now you wan - na give it, I —

A 2 — pap pap — I don't wan - na give it, Why you wan - na give it, Why you wan - na giv - ing it all — a - way? Hey, hey, — hey. Now you wan - na give it, I —

Bb

P.A. G CMaj7/G G(add2) CMaj7/G

Synth

Gr. 120

Bass

D. S.

# Big Yellow Taxi 11

SSAA Combo Bb

139

S 1  
Now, now! They paved par - a - dise to put in a par - king lot.

S 2  
Now, now! They paved par - a - dise to put up a par - king lot.

A 1  
Now, now! They paved par - a - dise to put up a par - king lot.

A 2  
Now, now! They paved par - a - dise to put up a par - king lot.

Bb

P.A.  
GMaj7(add2) CMaj7 D7(add2) G(add2)

Synth

Gtr.  
139

Bass

D. S.  
2 2



SSAA Combo Eb

# Big Yellow Taxi

Words & Music by Joni Mitchell  
Arrangement by Don Henken  
Original Key Ab Major

DEMO

With a groovy feeling  $\text{♩} = 84$

### Intro

The musical score for the 'Intro' section of 'Big Yellow Taxi' is arranged for an SSAA Combo Eb. It features ten staves: Soprano 1, Soprano 2, Alto 1, Alto 2, Eb Instrument, Piano Adv., Synthesizer, Guitar, Bass Guitar, and Drum Set. The key signature is Ab Major (three flats) and the time signature is 4/4. The tempo is marked as 'With a groovy feeling' with a quarter note equal to 84 beats per minute. The piano part includes four measures of accompaniment with the following chords: GMaj7(add2), CMaj7/G, GMaj7(add2), and CMaj7/G. The guitar and bass parts provide a rhythmic foundation, while the drum set plays a steady pattern. The vocal staves are currently blank, indicating the beginning of the piece.

© www.ChorusOnline.com / 0031 (0) 6 - 41 57 77 56

# Big Yellow Taxi 3

SSAA Combo Eb

## Verse 2

23

S 1 They took all the trees, and put them in a tree mu - - se-um

S 2 Woo pap pap pap Woo pap pap They took all the trees, and put them in a tree mu - - se-um

A 1 Woo pap pap pap Woo pap pap They took all the trees, and put them in a tree mu - - se-um

A 2 Woo pap pap pap Woo pap pap They took all the trees, and put them in a tree mu - - se-um

Eb

P.A. GMaj7(add2) CMaj7/G G(add2) CMaj7/G G(add2)

Synth

Gtr. 23

Bass

D. S. 2 2 2

## Chorus 2

30

S 1 And charged the peo - ple a dol - lar and a half to see them. No, no, no. Don't it al - ways seem to go That you

S 2 And charged the peo - ple a dol - lar and a half to see them. No, no, no. Don't it al - ways seem to go That you

A 1 And charged the peo - ple a dol - lar and a half to see them. No, no, no. Don't it al - ways seem to go That you

A 2 And charged the peo - ple a dol - lar and a half to see them. No, no, no. Don't it al - ways seem to go That you

Eb

P.A. CMaj7/G C/D G(add2) G GMaj7

Synth

Gtr. 30

Bass

D. S. 2 2 2

# Big Yellow Taxi 5

SSAA Combo Eb

## Chorus 3

49

S. 1 spots on my ap-ples, Leave me the birds and the bees Don't it al - ways seem to go That you don't know what you've got

S. 2 spots on my ap-ples, Leave me the birds and the bees Don't it al - ways seem to go That you don't know what you've got

A. 1 spots on my ap-ples, Leave me the birds and the bees please! Don't it al - ways seem to go That you don't know what you've got

A. 2 spots on my ap-ples, Leave me the birds and the bees please! Don't it al - ways seem to go That you don't know what you've got

Eb

P.A. CMaj7 C/D G(add2) G GMaj7 CMaj7/G

Synth

Gtr. 49

Bass

D. S. 2 2 2 2

56

S. 1 - till it's gone? They paved par-a - dise, and put up a park - ing lot. Hey now, they've paved par-a - dise to put up a park - ing lot.

S. 2 - till it's gone? They paved par-a - dise and put up a par - king lot. Hey now, they've paved par-a - dise to put up a par - king lot.

A. 1 - till it's gone? They paved par-a - dise and put up a par - king lot. Hey now, they've paved par-a - dise to put up a par - king lot.

A. 2 - till it's gone? They paved par-a - dise and put up a par - king lot. Hey now, they've paved par-a - dise to put up a par - king lot.

Eb

P.A. G(add2) CMaj7 D(add2) GMaj7 CMaj7 D(add2)

Synth

Gtr. 56

Bass

D. S. 2 2 2

# Big Yellow Taxi 7

SSAA Combo Eb

## Verse 4

77

S 1  
S 2  
A 1  
A 2  
Eb  
P.A.  
Synth  
Gtr.  
Bass  
D. S.

Lis-ten, late last night, I  
Lis-ten, late last night, I

G(add2) Em7 G/D CMaj7(add2) CMaj7(add2)

## Chorus 4

86

S 1  
S 2  
A 1  
A 2  
Eb  
P.A.  
Synth  
Gtr.  
Bass  
D. S.

heard the screendoor slam, And a big yel-low ta-xi took my man a-way. Now Don't it al-ways seem to go That you don't know what you've got  
heard the screendoor slam, And a big yel-low ta-xi took my man a-way. Ooh hoo Ooh  
Ooh hoo Ooh  
Ooh hoo Ooh

G C6 D(add2) G G GMaj7 C(add2)

# Big Yellow Taxi 9

SSAA Combo Eb

111

S 1  
paved par-a - dise They put up a par - king lot. Hey hey\_ hey, paved par - a - dise and put up a par - king lot.

S 2  
paved par-a - dise They put up a par - king lot. Hey hey\_ hey, paved par - a - dise and put up a par - king lot. Woo

A 1  
paved par-a - dise They put up a par - king lot. Hey hey\_ hey, paved par - a - dise and put up a par - king lot. Woo

A 2  
paved par-a - dise They put up a par - king lot. Hey hey\_ hey, paved par - a - dise and put up a par - king lot. Woo

Eb

P.A.  
CMaj7 D7(add2) GMaj7 CMaj7 D7(add2) GMaj7

Synth

Gtr.  
111

Bass

D. S.

*Coda*

118

S 1  
\_ pap pap pap Woo pap pap Hey, hey, hey.

S 2  
\_ pap pap pap Woo pap pap I don'twan-na give it, Why you wan-na give it, Why you wan-na giv-ing it all a-way? Hey, hey, hey.

A 1  
\_ pap pap pap Woo pap pap I don'twan-na give it, Why you wan-na give it, Why you wan-na giv-ing it all a-way? Hey, hey, hey.

A 2  
\_ pap pap pap Woo pap pap I don'twan-na give it, Why you wan-na give it, Why you wan-na giv-ing it all a-way? Hey, hey, hey.

Eb

P.A.  
CMaj7/G G CMaj7/G G(add2)

Synth

Gtr.  
118

Bass

D. S.

# Big Yellow Taxi 11

SSAA Combo Eb

138

S 1  
put in a par - king lot. \_\_\_\_\_ Now, now! They paved par - a - dise to put in a par - king lot. \_\_\_\_\_

S 2  
put up a par - king lot. \_\_\_\_\_ Now, now! They paved par - a - dise to put up a par - king lot. \_\_\_\_\_

A 1  
put up a par - king lot. \_\_\_\_\_ Now, now! They paved par - a - dise to put up a par - king lot. \_\_\_\_\_

A 2  
put up a par - king lot. \_\_\_\_\_ Now, now! They paved par - a - dise to put up a par - king lot. \_\_\_\_\_

Eb

P.A.  
D7(add2) GMaj7(add2) CMaj7 D7(add2) G(add2)

Synth

Gtr.  
138

Bass

D. S.

SSAA 4 extra staves

# Big Yellow Taxi

Words & Music by Joni Mitchell  
Arrangement by Don Henken  
Original Key Ab Major

*Intro*

Soprano 1  
Soprano 2  
Alto 1  
Alto 2

1  
2  
3  
4

Guitar  
Bass Guitar  
Drum Set

Piano Adv.  
Synthesizer

G(Maj7(add2)) C(Maj7/G) G(Maj7(add2)) C(Maj7/G) G C(Maj7/G) G(Maj7(add2))

*Verse 1*

They paved par-a - dis - e and put up a par - ling tot -  
They paved par-a - dis - e and put up a par - ling tot -  
They paved par-a - dis - e and put up a par - ling tot -  
They paved par-a - dis - e and put up a par - ling tot -

# Big Yellow Taxi 3

SSAA 4 extra staves

## Verse 2

22

S 1 put up a pair - king lot. \_\_\_\_\_  
They took all the trees, and put them in a tree mu - se-um And

S 2 put up a pair - king lot. \_\_\_\_\_  
Woo - pap pap - pap They took all the trees, and put them in a tree mu - se-um And

A 1 put up a pair - king lot. \_\_\_\_\_  
Woo - pap pap - pap They took all the trees, and put them in a tree mu - se-um And

A 2 put up a pair - king lot. \_\_\_\_\_  
Woo - pap pap - pap They took all the trees, and put them in a tree mu - se-um And

1 \_\_\_\_\_

2 \_\_\_\_\_

3 \_\_\_\_\_

4 \_\_\_\_\_

P.A. D7(add2) G(Maj7(add2) C(Maj7)/G G(add2) C(Maj7)/G G(add2)

Synth \_\_\_\_\_

Gr. \_\_\_\_\_

Bass \_\_\_\_\_

D.S. \_\_\_\_\_

# Big Yellow Taxi 5

SSAA 4 extra staves

Verse 3

39

S 1 paved par-a - - - - - and put up a park - - - - - ing lot. ———

S 2 paved par-a - - - - - and put up a par - - - - - king lot. ——— Woo ——— pap pap — pap

A 1 paved par-a - - - - - and put up a par - - - - - king lot. ——— Woo ——— pap pap — pap

A 2 paved par-a - - - - - and put up a par - - - - - king lot. ——— Woo ——— pap pap — pap

1 paved par-a - - - - - and put up a par - - - - - king lot. ——— Woo ——— pap pap — pap

2 paved par-a - - - - - and put up a par - - - - - king lot. ——— Woo ——— pap pap — pap

3 paved par-a - - - - - and put up a par - - - - - king lot. ——— Woo ——— pap pap — pap

4 paved par-a - - - - - and put up a par - - - - - king lot. ——— Woo ——— pap pap — pap

P.A. Cmaj7 D(add2) Gmaj7 Cmaj7/G G Cmaj7/G G(add2)

Synth

Gtr.

Bass

D.S.



# Big Yellow Taxi 9

SSAA 4 extra staves

Verse 4

75

S1  
S2  
A1  
A2  
1  
2  
3  
4

CMaj7/G  
G(add2)  
Em7  
G/D  
CMaj7(add2)  
CMaj7(add2)

Gtr.  
Bass  
D.S.

Synth

PA

75

Lis-ten, I heard the screendoor  
Lis-ten, I heard the screendoor  
Lis-ten, I heard the screendoor

# Big Yellow Taxi II

SSAA 4 extra staves

## Chorus 5

100

S1 put up a par - king lot. \_\_\_\_\_ Hey now, now. Don't it al - ways seem \_\_\_\_\_ to go That you don't know what you've got \_\_\_\_\_ till it's gone? They paved par - a - dise, and put up a park - ing lot.

S2 put up a par - king lot. \_\_\_\_\_ Hey now, now. Don't it al - ways seem \_\_\_\_\_ to go That you don't know what you got \_\_\_\_\_ till it's gone? They paved par - a - dise and put up a par - king lot.

A1 put up a par - king lot. \_\_\_\_\_ Hey now, now. Don't it al - ways seem \_\_\_\_\_ to go That you don't know what you got \_\_\_\_\_ till it's gone? They paved par - a - dise and put up a par - king lot.

A2 put up a par - king lot. \_\_\_\_\_ Hey now, now. Don't it al - ways seem \_\_\_\_\_ to go That you don't know what you got \_\_\_\_\_ till it's gone? They paved par - a - dise and put up a par - king lot.

1  
2  
3  
4

PA D(add2) G(Maj7) G G(Maj7) C(Maj7)/G G(add2) C(Maj7) D(add2)

Synth

Git. *100*

Bass

D.S.



# Big Yellow Taxi 15

SSAA 4 extra staves

175

S1 way, yeah yeah They paved par-a - dise to put in a par - king lot, \_\_\_\_\_  
Now, now! They paved par-a - dise to put in a par - king lot, \_\_\_\_\_

S2 way, yeah yeah They paved par-a - dise to put up a par - king lot, \_\_\_\_\_  
Now, now! They paved par-a - dise to put up a par - king lot, \_\_\_\_\_

A1 way, yeah yeah They paved par-a - dise to put up a par - king lot, \_\_\_\_\_  
Now, now! They paved par-a - dise to put up a par - king lot, \_\_\_\_\_

A2 way, yeah yeah They paved par-a - dise to put up a par - king lot, \_\_\_\_\_  
Now, now! They paved par-a - dise to put up a par - king lot, \_\_\_\_\_

1  
2  
3  
4

PA G(Maj7(add2)) C(Maj7) D7(add2) G(Maj7(add2)) C(Maj7) D7(add2) G(add2)

Synth

Gtr. 175

Bass

D.S. 2 2



SSAA small Combo

# Big Yellow Taxi

Words & Music by Joni Mitchell

Arrangement by Don Henken

Original Key Ab Major

With a groovy feeling ♩ = 84

### Intro

Score for SSAA small Combo, Piano, Guitar, Bass Guitar, and Drum Set. The score includes an Intro section. The vocal parts (Soprano 1, Soprano 2, Alto 1, Alto 2) are currently blank. The piano part features chords G<sup>Maj7</sup>(add2), C<sup>Maj7</sup>/G, and G<sup>Maj7</sup>(add2). The guitar part has a rhythmic pattern. The bass guitar part has a walking bass line. The drum set part has a groove.

© www.ChorusOnline.com / 0031 (0) 6 - 41 57 77 56



# Big Yellow Taxi 3

SSAA small Combo

## Chorus 1

16

S 1 Don't it al-ways seem \_\_\_ to go That you don't know what you got \_\_\_ till it'sgone? They paved par-a - dise and

S 2 Don't it al-ways seem \_\_\_ to go That you don't know what you got \_\_\_ till it'sgone? They paved par-a - dise and

A 1 Don't it al-ways seem \_\_\_ to go That you don't know what you got \_\_\_ till it'sgone? They paved par-a - dise and

A 2 Don't it al-ways seem \_\_\_ to go That you don't know what you got \_\_\_ till it'sgone? They paved par-a - dise and

P.A. G GMaj7 CMaj7/G G CMaj7

Gtr.

Bass

D. S.

22

S 1 put up a par - king lot. \_\_\_\_\_ They

S 2 put up a par - king lot. \_\_\_\_\_ Woo \_\_\_\_\_ pap pap \_ pap Woo \_\_\_\_\_ pap pap \_ They

A 1 put up a par - king lot. \_\_\_\_\_ Woo \_\_\_\_\_ pap pap \_ pap Woo \_\_\_\_\_ pap pap \_ They

A 2 put up a par - king lot. \_\_\_\_\_ Woo \_\_\_\_\_ pap pap \_ pap Woo \_\_\_\_\_ pap pap \_ They

P.A. D7(add2) GMaj7(add2) CMaj7/G G(add2)

Gtr.

Bass

D. S.

# Big Yellow Taxi 5

SSAA small Combo

36

S 1 — to go That you don't know what you've got \_\_\_\_\_ till it's gone? They paved par - a - dise, and

S 2 — to go That you don't know what you got \_\_\_\_\_ till it's gone? They paved par - a - dise and

A 1 — to go That you don't know what you got \_\_\_\_\_ till it's gone? They paved par - a - dise and

A 2 — to go That you don't know what you got \_\_\_\_\_ till it's gone? They paved par - a - dise and

P.A. C<sup>Maj7</sup>/G G(add2) C<sup>Maj7</sup>

Gtr.

Bass

D. S. 2 2

40

S 1 put up a park - ing lot. \_\_\_\_\_

S 2 put up a par - king lot. \_\_\_\_\_ Woo \_\_\_\_\_ pap pap pap Woo \_\_\_\_\_ pap pap \_\_\_\_\_

A 1 put up a par - king lot. \_\_\_\_\_ Woo \_\_\_\_\_ pap pap pap Woo \_\_\_\_\_ pap pap Hey, far -

A 2 put up a par - king lot. \_\_\_\_\_ Woo \_\_\_\_\_ pap pap pap Woo \_\_\_\_\_ pap pap Hey, far -

P.A. D(add2) G<sup>Maj7</sup> C<sup>Maj7</sup>/G G

Gtr.

Bass

D. S. 2 2

# Big Yellow Taxi 7

SSAA small Combo

54

S 1  
— to go That you don't know what you've got — till it's gone? They paved par - a - dise, and

S 2  
— to go That you don't know what you got — till it's gone? They paved par - a - dise and

A 1  
— to go That you don't know what you got — till it's gone? They paved par - a - dise and

A 2  
— to go That you don't know what you got — till it's gone? They paved par - a - dise and

P.A.  
C<sup>Maj7</sup>/G G(add2) C<sup>Maj7</sup>

Gtr.

Bass

D. S.

58

S 1  
put up a park - ing lot. — Hey now, they've paved par - a - dise to put up a park - ing lot.

S 2  
put up a par - king lot. — Hey now, they've paved par - a - dise to put up a par - king lot.

A 1  
put up a par - king lot. — Hey now, they've paved par - a - dise to put up a par - king lot.

A 2  
put up a par - king lot. — Hey now, they've paved par - a - dise to put up a par - king lot.

P.A.  
D(add2) G<sup>Maj7</sup> C<sup>Maj7</sup> D(add2)

Gtr.

Bass

D. S.

# Big Yellow Taxi 9

SSAA small Combo

73

S 1

S 2

A 1

A 2

P.A.

G(add2) CMaj7/G G(add2)

Gtr.

Bass

D. S.

78

S 1

S 2

A 1

A 2

P.A.

E<sup>m</sup>7 G/D CMaj7(add2)

Gtr.

Bass

D. S.

Lis-ten,

Lis-ten,

# Big Yellow Taxi 11

SSAA small Combo

## Chorus 5

99

S 1  
paved par-a - dise and put up a par - king lot. \_\_\_\_\_ Hey now, now. Don't it al - ways seem

S 2  
paved par-a - dise and put up a par - king lot. \_\_\_\_\_ Hey now, now. Don't it al - ways seem

A 1  
paved par-a - dise and put up a par - king lot. \_\_\_\_\_ Hey now, now. Don't it al - ways seem

A 2  
paved par-a - dise and put up a par - king lot. \_\_\_\_\_ Hey now, now. Don't it al - ways seem

P.A.  
C Maj7 D(add2) G Maj7 G G Maj7

Gtr.

Bass

D. S.

104

S 1  
\_ to go That you don't know what you've got \_ till it's gone? They paved par-a - dise, and put up a park - ing lot.

S 2  
\_ to go That you don't know what you got \_ till it's gone? They paved par-a - dise and put up a par - king lot.

A 1  
\_ to go That you don't know what you got \_ till it's gone? They paved par-a - dise and put up a par - king lot.

A 2  
\_ to go That you don't know what you got \_ till it's gone? They paved par-a - dise and put up a par - king lot.

P.A.  
C Maj7/G G(add2) C Maj7 D(add2)

Gtr.

Bass

D. S.

2

Coda

119

S 1

S 2

A 1

A 2

P.A.

Gtr.

Bass

D. S.

Woo — pap pap —

Woo — pap pap — I don't wan - na give it, Why you wan - na give it, Why you wan - na

Woo — pap pap — I don't wan - na give it, Why you wan - na give it, Why you wan - na

C<sub>Maj7/G</sub> G C<sub>Maj7/G</sub>

119

S 1

S 2

A 1

A 2

P.A.

Gtr.

Bass

D. S.

Hey, hey, — hey. Now you wan - na give it, I — should wan - na give it, Cause you're

giv - ing it all — a - way? — Hey, hey, — hey. Now you wan - na give it, I — should wan - na give it, Cause you're

giv - ing it all — a - way? — Hey, hey, — hey. Now you wan - na give it, I — should wan - na give it, Cause you're

G(add2) C<sub>Maj7/G</sub>

123

Gtr.

Bass

D. S.

# Big Yellow Taxi 15

SSAA small Combo

136

S 1 They paved par - a - dise to

S 2 They paved par - a - dise to

A 1 They paved par - a - dise to

A 2 They paved par - a - dise to

P.A. C Maj 7

Gtr.

Bass

D. S.

138

S 1 put in a par - king lot, Now, now! They

S 2 put up a par - king lot. Now, now! They

A 1 put up a par - king lot. Now, now! They

A 2 put up a par - king lot. Now, now! They

P.A. D7(add2) GMaj7(add2)

Gtr.

Bass

D. S. 2

SSAA small Combo extra staves

# Big Yellow Taxi

*Words & Music by Joni Mitchell*  
*Arrangement by Don Henken*  
*Original Key Ab Major*

With a groovy feeling ♩ = 84

**Intro**

Soprano 1  
Soprano 2  
Alto 1  
Alto 2

1  
2

Guitar  
Bass Guitar  
Drum Set

Piano Adv.

Guitar: GMaj7(add2), CMaj7/G, GMaj7(add2), CMaj7/G, G, CMaj7/G

Verse 1

They paved par-a - dise and put up a par - king lot.  
They paved par-a - dise and put up a par - king lot.  
They paved par-a - dise and put up a par - king lot.  
They paved par-a - dise and put up a par - king lot.

Big Yellow Taxi 3  
SSAA small Combo extra staves

18

S 1 — to go That you don't know what you got till it's gone? They paved par-a - dise and put up a par - king lot. —

S 2 — to go That you don't know what you got till it's gone? They paved par - a - dise and put up a par - king lot. — Woo — pap pap — pap

A 1 — to go That you don't know what you got till it's gone? They paved par - a - dise and put up a par - king lot. — Woo — pap pap — pap

A 2 — to go That you don't know what you got till it's gone? They paved par - a - dise and put up a par - king lot. — Woo — pap pap — pap

1

2

P.A. C Maj 7/G G C Maj 7 D7(add2) G Maj 7(add2)

Gtr. 18

Bass

D. S.

Chorus 2

Big Yellow Taxi 5  
SSAA small Combo extra staves

31

S1 charged the peo - ple a dol - lar and a half to see them. No, no, — no. Don't it al - ways seem — to go That you

S2 charged the peo - ple a dol - lar and a half to see them. No, no, — no. Don't it al - ways seem — to go That you

A1 charged the peo - ple a dol - lar and a half to see them. No, no, — no. Don't it al - ways seem — to go That you

A2 charged the peo - ple a dol - lar and a half to see them. No, no, — no. Don't it al - ways seem — to go That you

1

2

Gtr. Cmaj7/G C/D G(add2) G Gmaj7

Bass

D.S.

2 2 2

Verse 3

Big Yellow Taxi 7  
SSAA small Combo extra staves

43

S 1  
I don't care a-bout

S 2  
I don't care a-bout

A 1  
I don't care a-bout

A 2  
I don't care a-bout

1  
2

Woo pap pap pap  
Woo pap pap pap  
Woo pap pap pap  
Woo pap pap pap

Hey, far - mer, far - mer,  
Hey, far - mer, far - mer,  
Hey, far - mer, far - mer,  
Hey, far - mer, far - mer,

put a-way your D. D. T.  
put a-way your D. D. T.  
put a-way your D. D. T.  
put a-way your D. D. T.

Cmaj7/G G Cmaj7/G G (add2)

Gtr.  
43

Bass

D. S.

Big Yellow Taxi 9  
SSAA small Combo extra staves

55

S 1 don't know what you've got till it's gone? They paved par - a - dise, and put up a park - ing lot. Hey now, they've

S 2 don't know what you got till it's gone? They paved par - a - dise and put up a par - king lot. Hey now, they've

A 1 don't know what you got till it's gone? They paved par - a - dise and put up a par - king lot. Hey now, they've

A 2 don't know what you got till it's gone? They paved par - a - dise and put up a par - king lot. Hey now, they've

1

2

P.A. Cmaj7/G G(add2) Cmaj7 D(add2) Gmaj7

Gtr. 55

Bass 2 2 2

D. S. 2 2 2



Verse 4

Big Yellow Taxi 13  
SSAA small Combo extra staves

87

S 1 Lis-ten, late last night, I heard the screendoor slam, And a big yel-low ta-xi took my man a-way. —

S 2 Lis-ten, late last night, I heard the screendoor slam, And a big yel-low ta-xi took my man a-way. —

A 1

A 2

1

2

P.A. CMaj7(add2) CMaj7(add2) G C6 D(add2) G

Ctr. 87

Bass

D.S.

Chorus 5

Big Yellow Taxi 15  
SSAA small Combo extra staves

100

S 1 put up a par - king lot. \_\_\_\_\_ Hey now, now. Don't it al - ways seem \_\_\_\_\_ to go That you don't know what you've got

S 2 put up a par - king lot. \_\_\_\_\_ Hey now, now. Don't it al - ways seem \_\_\_\_\_ to go That you don't know what you got

A 1 put up a par - king lot. \_\_\_\_\_ Hey now, now. Don't it al - ways seem \_\_\_\_\_ to go That you don't know what you got

A 2 put up a par - king lot. \_\_\_\_\_ Hey now, now. Don't it al - ways seem \_\_\_\_\_ to go That you don't know what you got

1

2

P.A. D(add2) G(Maj7) G G(Maj7) C(Maj7)/G

Gtr. 100

Bass

D.S.

Big Yellow Taxi 17  
SSAA small Combo extra staves

112

S 1 put up a par - king lot. Hey hey — hey, paved par - a - dise and put up a par - king lot.

S 2 put up a par - king lot. Hey hey — hey, paved par - a - dise and put up a par - king lot. Woo — pap pap — pap

A 1 put up a par - king lot. Hey hey — hey, paved par - a - dise and put up a par - king lot. Woo — pap pap — pap

A 2 put up a par - king lot. Hey hey — hey, paved par - a - dise and put up a par - king lot. Woo — pap pap — pap

1

2

P.A. D7(add2) Gmaj7 Cmaj7 D7(add2) Gmaj7

Gtr. 112

Bass

D.S.



173

S 1 way, yeah. They paved par - a - dise to put in a par - king lot, \_\_\_\_\_

S 2 way, yeah. They paved par - a - dise to put up a par - king lot, \_\_\_\_\_

A 1 way, yeah. They paved par - a - dise to put up a par - king lot, \_\_\_\_\_

A 2 way, yeah. They paved par - a - dise to put up a par - king lot, \_\_\_\_\_

1

2

P.A. GMaj7(add2) CMaj7 D7(add2) GMaj7(add2)

Gtr. 173

Bass

D.S.



SSAA Piano advanced

# Big Yellow Taxi

Words & Music by Joni Mitchell

Arrangement by Don Henken

Original Key Ab Major

With a groovy feeling ♩ = 84

## Intro

Soprano 1

Soprano 2

Alto 1

Alto 2

Piano Adv.

G<sup>Maj7</sup>(add2)      C<sup>Maj7</sup>/G      G<sup>Maj7</sup>(add2)

## Verse 1

S 1

S 2

A 1

A 2

P.A

They paved par - a - dise and put up a par - king lot, With a

They paved par - a - dise and put up a par - king lot, With a

They paved par - a - dise and put up a par - king lot, With a

They paved par - a - dise and put up a par - king lot, With a

C<sup>Maj7</sup>/G      G      C<sup>Maj7</sup>/G      G<sup>Maj7</sup>(add2)

29

S 1 se - um And charged the peo - ple a dol - lar and a half to see them.

S 2 se - um And charged the peo - ple a dol - lar and a half to see them.

A 1 se - um And charged the peo - ple a dol - lar and a half to see them.

A 2 se - um And charged the peo - ple a dol - lar and a half to see them.

P.A. G(add2) CMaj7/G C/D G(add2)

34

*Chorus 2*

S 1 No, no, no. Don't it al - ways seem to go That you don't know what you've got till it's gone? They

S 2 No, no, no. Don't it al - ways seem to go That you don't know what you got till it's gone? They

A 1 No, no, no. Don't it al - ways seem to go That you don't know what you got till it's gone? They

A 2 No, no, no. Don't it al - ways seem to go That you don't know what you got till it's gone? They

P.A. G GMaj7 CMaj7/G G(add2)

39

S 1 paved par - a - dise, and put up a park - ing lot. Woo pap pap pap Woo

S 2 paved par - a - dise and put up a par - king lot. Woo pap pap pap Woo

A 1 paved par - a - dise and put up a par - king lot. Woo pap pap pap Woo

A 2 paved par - a - dise and put up a par - king lot. Woo pap pap pap Woo

P.A. CMaj7 D(add2) GMaj7 CMaj7/G

59

S 1  
S 2  
A 1  
A 2

Hey now, they've paved par - a - dise to put up a park - ing lot. Woo

G Maj7 C Maj7 D (add2) G Maj7 (add2)

P.A.

64

S 1  
S 2  
A 1  
A 2

Why not?  
— pap pap — pap Woo — pap pap —

— pap pap — pap Woo — pap pap —

— pap pap — pap Woo — pap pap —

C Maj7/G G C Maj7/G G (add2)

P.A.

*Instr. Solo*

70

S 1  
S 2  
A 1  
A 2

C Maj7/G G (add2)

P.A.

96

S 1 — till it's gone? They paved par - a - dise and put up a par - king lot. —

S 2 — hoo — They paved par - a - dise and put up a par - king lot. —

A 1 — hoo — They paved par - a - dise and put up a par - king lot. —

A 2 — hoo — They paved par - a - dise and put up a par - king lot. —

P.A. G(add2) CMaj7 D(add2) GMaj7

102

S 1 Hey now, now. Don't it al - ways seem \_\_\_ to go That you don't know what you've got \_\_\_ till it's gone? They

S 2 Hey now, now. Don't it al - ways seem \_\_\_ to go That you don't know what you got \_\_\_ till it's gone? They

A 1 Hey now, now. Don't it al - ways seem \_\_\_ to go That you don't know what you got \_\_\_ till it's gone? They

A 2 Hey now, now. Don't it al - ways seem \_\_\_ to go That you don't know what you got \_\_\_ till it's gone? They

P.A. G GMaj7 CMaj7/G G(add2)

*Chorus 5*

107

S 1 paved par - a - dise, and put up a park - ing lot. — Why not? They paved par - a - dise They

S 2 paved par - a - dise and put up a par - king lot. — Why not? They paved par - a - dise They

A 1 paved par - a - dise and put up a par - king lot. — Why not? They paved par - a - dise They

A 2 paved par - a - dise and put up a par - king lot. — Why not? They paved par - a - dise They

P.A. CMaj7 D(add2) GMaj7 GMaj7 CMaj7

126

S 1

S 2

A 1

A 2

P.A

I don't wan - na give it, Why you

— should wan - na give it, Cause you're giv - ing it all \_\_\_ a - way, \_\_\_ now now. — I don't wan - na give it, Why you

— should wan - na give it, Cause you're giv - ing it all \_\_\_ a - way, \_\_\_ now now. — I don't wan - na give it, Why you

— should wan - na give it, Cause you're giv - ing it all \_\_\_ a - way, \_\_\_ now now. — I don't wan - na give it, Why you

G(add2) CMaj7/G

130

S 1

S 2

A 1

A 2

P.A

wan - na give it, Why you wan - na giv - ing it all \_\_\_ a - way. Cause you're giv - ing it all, \_\_\_ giv - ing it all \_\_\_ a -

wan - na give it, Why you wan - na giv - ing it all \_\_\_ a - way. Cause you're giv - ing it all, \_\_\_ giv - ing it all \_\_\_ a -

wan - na give it, Why you wan - na giv - ing it all \_\_\_ a - way. Cause you're giv - ing it all, \_\_\_ giv - ing it all \_\_\_ a -

wan - na give it, Why you wan - na giv - ing it all \_\_\_ a - way. Cause you're giv - ing it all, \_\_\_ giv - ing it all \_\_\_ a -

G(add2) CMaj7 D7(add2)

135

S 1

S 2

A 1

A 2

P.A

way, yeah \_\_\_ yeah. They paved par - a - dise to put in a par - king lot,

way, yeah \_\_\_ yeah. They paved par - a - dise to put up a par - king lot.

way, yeah \_\_\_ yeah. They paved par - a - dise to put up a par - king lot.

way, yeah \_\_\_ yeah. They paved par - a - dise to put up a par - king lot.

G Maj7(add2) CMaj7 D7(add2)



SSAA Piano moderated

# Big Yellow Taxi

Words & Music by Joni Mitchell  
Arrangement by Don Henken  
Original Key Ab Major

With a groovy feeling ♩ = 84

### Intro

Soprano 1

Soprano 2

Alto 1

Alto 2

Piano Mod.

GMaj7(add2) CMaj7 GMaj7(add2) CMaj7

### Verse 1

S 1

S 2

A 1

A 2

P. M.

They paved par - a - dise and put up a par - king lot, With a pink ho - tel, a bou -

They paved par - a - dise and put up a par - king lot, With a pink ho - tel, a bou -

They paved par - a - dise and put up a par - king lot, With a pink ho - tel, a bou -

They paved par - a - dise and put up a par - king lot, With a pink ho - tel, a bou -

G CMaj7/G GMaj7(add2) CMaj7/G

# Big Yellow Taxi 3

SSAA Piano moderated

## Chorus 2

31

S 1 charged the peo - ple a dol - lar and a half to see them. No, no, no. Don't it al - ways seem

S 2 charged the peo - ple a dol - lar and a half to see them. No, no, no. Don't it al - ways seem

A 1 charged the peo - ple a dol - lar and a half to see them. No, no, no. Don't it al - ways seem

A 2 charged the peo - ple a dol - lar and a half to see them. No, no, no. Don't it al - ways seem

P. M. C<sup>Maj7</sup>/G C/D G(add2) G G<sup>Maj7</sup>

36

S 1 - to go That you don't know what you've got till it's gone? They paved par-a - dise, and put up a park - ing lot.

S 2 - to go That you don't know what you got till it's gone? They paved par-a - dise and put up a park - ing lot.

A 1 - to go That you don't know what you got till it's gone? They paved par-a - dise and put up a park - ing lot.

A 2 - to go That you don't know what you got till it's gone? They paved par-a - dise and put up a park - ing lot.

P. M. C<sup>Maj7</sup>/G G(add2) C<sup>Maj7</sup> D(add2)

## Verse 3

41

S 1

S 2 Woo pap pap pap Woo pap pap

A 1 Woo pap pap pap Woo pap pap Hey, far - mer, far - mer, put a-way your D. D.

A 2 Woo pap pap pap Woo pap pap Hey, far - mer, far - mer, put a-way your D. D.

P. M. G<sup>Maj7</sup> C<sup>Maj7</sup>/G G C<sup>Maj7</sup>/G

# Big Yellow Taxi 5

SSAA Piano moderated

*Instr. Solo*

63

S 1

S 2

A 1

A 2

P. M

Why not?

Woo pap pap pap Woo pap pap

Woo pap pap pap Woo pap pap

Woo pap pap pap Woo pap pap

G Maj7(add2) C Maj7/G G C Maj7/G

69

S 1

S 2

A 1

A 2

P. M

G(add2) C Maj7/G G(add2)

75

S 1

S 2

A 1

A 2

P. M

C Maj7/G G(add2) E m7 G/D C Maj7(add2)

Big Yellow Taxi 7  
SSAA Piano moderated

104

S 1  
— to go That you don't know what you've got — till it's gone? They paved par - a - dise, and put up a park - ing lot.

S 2  
— to go That you don't know what you got — till it's gone? They paved par - a - dise and put up a par - king lot.

A 1  
— to go That you don't know what you got — till it's gone? They paved par - a - dise and put up a par - king lot.

A 2  
— to go That you don't know what you got — till it's gone? They paved par - a - dise and put up a par - king lot.

P. M  
C Maj7/G G (add2) C Maj7 D (add2)

109

S 1  
Why not? They paved par - a - dise They put up a par - king lot. Hey hey — hey,

S 2  
Why not? They paved par - a - dise They put up a par - king lot. Hey hey — hey,

A 1  
Why not? They paved par - a - dise They put up a par - king lot. Hey hey — hey,

A 2  
Why not? They paved par - a - dise They put up a par - king lot. Hey hey — hey,

P. M  
G Maj7 G Maj7 C Maj7 D7 (add2) G Maj7

115

S 1  
paved par - a - dise and put up a par - king lot.

S 2  
paved par - a - dise and put up a par - king lot. Woo — pap pap — pap Woo — pap pap —

A 1  
paved par - a - dise and put up a par - king lot. Woo — pap pap — pap Woo — pap pap —

A 2  
paved par - a - dise and put up a par - king lot. Woo — pap pap — pap Woo — pap pap —

P. M  
C Maj7 D7 (add2) G Maj7 C Maj7/G G

Big Yellow Taxi 9  
SSAA Piano moderated

136

S 1  
They paved par - a - dise to put in a par - king lot. \_\_\_\_\_

S 2  
They paved par - a - dise to put up a par - king lot. \_\_\_\_\_

A 1  
They paved par - a - dise to put up a par - king lot. \_\_\_\_\_

A 2  
They paved par - a - dise to put up a par - king lot. \_\_\_\_\_

P. M  
C<sup>Maj</sup>7 D7(add2) G<sup>Maj</sup>7(add2)

140

S 1  
Now, now! They paved par - a - dise to put in a par - king lot. \_\_\_\_\_

S 2  
Now, now! They paved par - a - dise to put up a par - king lot. \_\_\_\_\_

A 1  
Now, now! They paved par - a - dise to put up a par - king lot. \_\_\_\_\_

A 2  
Now, now! They paved par - a - dise to put up a par - king lot. \_\_\_\_\_

P. M  
C<sup>Maj</sup>7 D7(add2) G(add2)



SSAA

# Big Yellow Taxi

Words & Music by Joni Mitchell

Arrangement by Don Henken

Original Key Ab Major

With a groovy feeling ♩ = 84

### Intro

### Verse 1

Soprano 1

Soprano 2

Alto 1

Alto 2

They paved par-a-dise and put up a par-king lot,

They paved par-a-dise and put up a par-king lot,

They paved par-a-dise and put up a par-king lot,

They paved par-a-dise and put up a par-king lot,

11

S 1

S 2

A 1

A 2

With a pink ho-tel, a bou-tique, and a swing-ing hot spot.

With a pink ho-tel, a bou-tique, and a swing-ing hot spot.

With a pink ho-tel, a bou-tique, and a swing-ing hot spot.

With a pink ho-tel, a bou-tique, and a swing-ing hot spot.

31

S 1  
charged the peo - ple a dol - lar and a half to see them. No, no, \_\_\_ no.

S 2  
charged the peo - ple a dol - lar and a half to see them. No, no, \_\_\_ no.

A 1  
charged the peo - ple a dol - lar and a half to see them. No, no, \_\_\_ no.

A 2  
charged the peo - ple a dol - lar and a half to see them. No, no, \_\_\_ no.

**Chorus 2**

35

S 1  
Don't it al - ways seem \_\_\_ to go That you don't know what you've got \_\_\_ till it's gone? They

S 2  
Don't it al - ways seem \_\_\_ to go That you don't know what you got \_\_\_ till it's gone? They

A 1  
Don't it al - ways seem \_\_\_ to go That you don't know what you got \_\_\_ till it's gone? They

A 2  
Don't it al - ways seem \_\_\_ to go That you don't know what you got \_\_\_ till it's gone? They

39

S 1  
paved par-a-dise, and put up a park - ing lot. \_\_\_

S 2  
paved par-a-dise and put up a par - king lot. \_\_\_ Woo \_\_\_ pap pap \_\_\_ pap Woo \_\_\_

A 1  
paved par-a-dise and put up a par - king lot. \_\_\_ Woo \_\_\_ pap pap \_\_\_ pap Woo \_\_\_

A 2  
paved par-a-dise and put up a par - king lot. \_\_\_ Woo \_\_\_ pap pap \_\_\_ pap Woo \_\_\_

56

S 1  
— till it's gone? They paved par - a - dise, and put up a park - ing lot. —

S 2  
— till it's gone? They paved par - a - dise and put up a par - king lot. —

A 1  
— till it's gone? They paved par - a - dise and put up a par - king lot. —

A 2  
— till it's gone? They paved par - a - dise and put up a par - king lot. —

60

S 1  
Hey now, they've paved par - a - dise to put up a park - ing lot. —

S 2  
Hey now, they've paved par - a - dise to put up a par - king lot. — Woo —

A 1  
Hey now, they've paved par - a - dise to put up a par - king lot. — Woo —

A 2  
Hey now, they've paved par - a - dise to put up a par - king lot. — Woo —

*Instr. Solo*

64

S 1  
Why not?

S 2  
— pap pap — pap Woo — pap pap —

A 1  
— pap pap — pap Woo — pap pap —

A 2  
— pap pap — pap Woo — pap pap —

14 2

14 2

14 2

14 2

Chorus 5

99

S 1  
paved par-a-dise and put up a par - king lot. — Hey now, now. Don't it al-ways seem

S 2  
paved par-a-dise and put up a par - king lot. — Hey now, now. Don't it al-ways seem

A 1  
paved par-a-dise and put up a par - king lot. — Hey now, now. Don't it al-ways seem

A 2  
paved par-a-dise and put up a par - king lot. — Hey now, now. Don't it al-ways seem

104

S 1  
— to go That you don't know what you've got — till it's gone? They paved par-a - dise, and

S 2  
— to go That you don't know what you got — till it's gone? They paved par - a - dise and

A 1  
— to go That you don't know what you got — till it's gone? They paved par - a - dise and

A 2  
— to go That you don't know what you got — till it's gone? They paved par - a - dise and

108

S 1  
put up a park - ing lot. — Why not? They paved par-a-dise They put up a par - king

S 2  
put up a par - king lot. — Why not? They paved par-a-dise They put up a par - king

A 1  
put up a par - king lot. — Why not? They paved par-a-dise They put up a par - king

A 2  
put up a par - king lot. — Why not? They paved par-a-dise They put up a par - king

125

S 1

S 2

A 1

A 2

Now you wan - na give it, I \_\_\_\_ should wan - na give it, Cause you're giv-ing it all\_\_ a - way,

Now you wan - na give it, I \_\_\_\_ should wan - na give it, Cause you're giv-ing it all\_\_ a - way,

Now you wan - na give it, I \_\_\_\_ should wan - na give it, Cause you're giv-ing it all\_\_ a - way,

128

S 1

S 2

A 1

A 2

I don't wan - na give it, Why you wan - na give it, Why you wan - na

\_\_ now now. I don't wan - na give it, Why you wan - na give it, Why you wan - na

\_\_ now now. I don't wan - na give it, Why you wan - na give it, Why you wan - na

\_\_ now now. I don't wan - na give it, Why you wan - na give it, Why you wan - na

131

S 1

S 2

A 1

A 2

giv-ing it all\_\_ a-way. Cause you're giv-ing it all,\_\_ giv-ing it all\_\_ a - way, yeah yeah.

giv-ing it all\_\_ a-way. Cause you're giv-ing it all,\_\_ giv-ing it all\_\_ a - way, yeah yeah.

giv-ing it all\_\_ a-way. Cause you're giv-ing it all,\_\_ giv-ing it all\_\_ a - way, yeah yeah.

giv-ing it all\_\_ a-way. Cause you're giv-ing it all,\_\_ giv-ing it all\_\_ a - way, yeah yeah.



C Instrument

# Big Yellow Taxi

Words & Music by Joni Mitchell

Arrangement by Don Henken

Original Key Ab Major

With a groovy feeling ♩ = 84

**Intro**

8                      8                      10                      8                      10

**Verse 1**

**Chorus 1**

**Verse 2**

**Chorus 2**

**Verse 3**

**Chorus 3**

**Instr. Solo**

45                      8                      13

71

77

**Verse 4**

**Chorus 4**

**Chorus 5**

**Coda**

85                      8                      5                      4                      18                      23



Bb Instrument

# Big Yellow Taxi

Words & Music by Joni Mitchell

Arrangement by Don Henken

Original Key Ab Major

With a groovy feeling ♩ = 84

**Intro**

**Verse 1**

**Chorus 1**

**Verse 2**

**Chorus 2**

8 8 10 8 10

**Verse 3**

**Chorus 3**

**Instr. Solo**

45 8 13

70

76

**Verse 4**

**Chorus 4**

**Chorus 5**

**Coda**

84 8 5 4 4 18 23



Eb Instrument

# Big Yellow Taxi

Words & Music by Joni Mitchell  
Arrangement by Don Henken  
Original Key Ab Major

With a groovy feeling ♩ = 84

**Intro**      **Verse 1**      **Chorus 1**      **Verse 2**      **Chorus 2**

8      8      10      8      10

**Verse 3**      **Chorus 3**      **Instr. Solo**

45      8      13

70

76

**Verse 4**      **Chorus 4**      **Chorus 5**      **Coda**

84      8      5      4      18      23



Piano Advanced

# Big Yellow Taxi

Words & Music by Joni Mitchell

Arrangement by Don Henken

Original Key Ab Major

With a groovy feeling ♩ = 84

### Intro

F<sup>Maj7</sup>(add2)

B<sup>b</sup>Maj7/F

### Verse 1

F<sup>Maj7</sup>(add2)

B<sup>b</sup>Maj7/F

F B<sup>b</sup>Maj7/F

F<sup>Maj7</sup>(add2)

B<sup>b</sup>Maj7/F

### Chorus 1

F<sup>Maj7</sup>(add2)

F

F<sup>Maj7</sup>

B<sup>b</sup>Maj7/F

© www.ChorusOnline.com / 0031 (0) 6 - 41 57 77 56

38 F(add2) B<sup>b</sup>Maj7 C(add2)

41 FMaj7 B<sup>b</sup>Maj7/F F

Verse 3

45 B<sup>b</sup>Maj7/F F(add2)

48 B<sup>b</sup>Maj7 B<sup>b</sup>/C

Chorus 3

51 F(add2) F FMaj7

71 B $\flat$ Maj7/F F(add2)

74 B $\flat$ Maj7/F

77 F(add2) D $^m$ 7 F/C

81 B $\flat$ Maj7(add2) Verse 4 B $\flat$ Maj7(add2) F

89 B $\flat$ 6 Chorus 4 C(add2) F F F $^m$ 7 B $\flat$ (add2) F(add2)

115 B♭Maj7 C7(add2) FMaj7

119 B♭Maj7/F F Coda B♭Maj7/F

123 F(add2) B♭Maj7/F

127 F(add2) B♭Maj7/F

131 F(add2) B♭Maj7



Piano Moderated

# Big Yellow Taxi

Words & Music by Joni Mitchell

Arrangement by Don Henken

Original Key Ab Major

With a groovy feeling ♩ = 84

### Intro

F<sup>Maj7</sup>(add2) B<sup>b</sup>Maj7/F

### Verse 1

5 F<sup>Maj7</sup>(add2) B<sup>b</sup>Maj7/F F B<sup>b</sup>Maj7/F

10 F<sup>Maj7</sup>(add2) B<sup>b</sup>Maj7/F

### Chorus 1

15 F<sup>Maj7</sup>(add2) F F<sup>Maj7</sup> B<sup>b</sup>Maj7/F

© www.ChorusOnline.com / 0031 (0) 6 - 41 57 77 56

Big Yellow Taxi 3  
Piano Moderated

41 F<sup>Maj7</sup> B<sup>b</sup>Maj7/F F

Verse 3

45 B<sup>b</sup>Maj7/F F(add2)

49 B<sup>b</sup>Maj7 B<sup>b</sup>/C F(add2)

Chorus 3

53 F F<sup>Maj7</sup> B<sup>b</sup>Maj7/F F(add2)

57 B<sup>b</sup>Maj7 C(add2) F<sup>Maj7</sup>

Verse 4

82

B $\flat$ Maj7(add2) F B $\flat$ 6

Chorus 4

90

C(add2) F F F $\flat$ Maj7 B $\flat$ (add2) F(add2)

98

B $\flat$ Maj7 C(add2) F $\flat$ Maj7

Chorus 5

102

F F $\flat$ Maj7 B $\flat$ Maj7/F

106

F(add2) B $\flat$ Maj7 C(add2) F $\flat$ Maj7



Synthesizer

# Big Yellow Taxi

Words & Music by Joni Mitchell  
Arrangement by Don Henken  
Original Key Ab Major

With a groovy feeling ♩ = 84

### Intro

### Verse 1

### Chorus 1

8 8 9 F(add2)

### Verse 2

27 B♭Maj7/F F(add2) B♭Maj7/F

### Chorus 2

32 B♭/C F(add2) F FMaj7 B♭Maj7/F

38 F(add2) B♭Maj7 C(add2) FMaj7 B♭Maj7/F F

© www.ChorusOnline.com / 0031 (0) 6 - 41 57 77 56

76 F(add2) D<sup>m7</sup> F/C B<sup>b</sup>Maj7(add2)

Verse 4

83 B<sup>b</sup>Maj7(add2) F B<sup>b</sup>6

Chorus 4

90 C(add2) F F F<sup>Maj7</sup> B<sup>b</sup>(add2) F(add2)

97 B<sup>b</sup>Maj7 C(add2) F<sup>Maj7</sup>

Chorus 5

102 F F<sup>Maj7</sup> B<sup>b</sup>Maj7/F F(add2) B<sup>b</sup>Maj7



Guitar

# Big Yellow Taxi

Words & Music by Joni Mitchell  
Arrangement by Don Henken  
Original Key Ab Major

With a groovy feeling ♩ = 84  
*Intro*

F<sup>Maj7</sup>(add2) B<sup>b</sup>Maj7

4 F<sup>Maj7</sup>(add2) B<sup>b</sup>Maj7

*Verse 1*

8 F B<sup>b</sup>Maj7/F F<sup>Maj7</sup>(add2)

12 B<sup>b</sup>Maj7/F F<sup>Maj7</sup>(add2)

*Chorus 1*

16 F F<sup>Maj7</sup> B<sup>b</sup>Maj7/F

20 F B<sup>b</sup>Maj7 C7(add2) F<sup>Maj7</sup>(add2)

Chorus 3

52 F FMaj7 B♭Maj7/F

56 F(add2) B♭Maj7 C(add2) FMaj7

60 B♭Maj7 C(add2) FMaj7(add2)

Instr. Solo

64 B♭Maj7/F F B♭Maj7/F

68 F(add2) B♭Maj7/F

72 F(add2) B♭Maj7/F

76 F(add2) Dm7

Bass Guitar

# Big Yellow Taxi



Words & Music by Joni Mitchell  
Arrangement by Don Henken  
Original Key Ab Major

With a groovy feeling ♩ = 84

### Intro

F<sup>Maj7</sup>(add2) B<sup>b</sup>Maj7/F

### Verse 1

5 F<sup>Maj7</sup>(add2) B<sup>b</sup>Maj7/F F B<sup>b</sup>Maj7/F

10 F<sup>Maj7</sup>(add2) B<sup>b</sup>Maj7/F

### Chorus 1

15 F<sup>Maj7</sup>(add2) F F<sup>Maj7</sup> B<sup>b</sup>Maj7/F

20 F B<sup>b</sup>Maj7 C7(add2) F<sup>Maj7</sup>(add2)

### Verse 2

25 B<sup>b</sup>Maj7/F F(add2) B<sup>b</sup>Maj7/F F(add2)

30 B<sup>b</sup>Maj7/F B<sup>b</sup>/C F(add2)

### Chorus 2

35 F F<sup>Maj7</sup> B<sup>b</sup>Maj7/F F(add2) B<sup>b</sup>Maj7

40 C(add2) F<sup>Maj7</sup> B<sup>b</sup>Maj7/F F



Drum Set

# Big Yellow Taxi

Words & Music by Joni Mitchell

Arrangement by Don Henken

Original Key Ab Major

Hi-Hat Pedal  
Hi-Hat opened  
Hi-Hat Closed  
Snaredrum  
Bassdrum  
Snare rim (click)

Cymbal Crash  
Ride heavy  
Ride light  
Ride cup  
Cymbal Splash  
Triangle Open  
Triangle Closed  
Shakers (Maracas)  
Bells

Claves  
Conga High  
Conga Low  
Quiro  
Tambourine

Toms: High 1  
High 2  
Mid  
Low

With a groovy feeling  $\text{♩} = 84$

### Intro

### Verse 1

### Chorus 1

# Big Yellow Taxi

Words & Music by Joni Mitchell

Arrangement by Don Henken

Original Key Ab Major

*Intro*

A<sup>b</sup>Maj7(add2)

D<sup>b</sup>Maj7/A<sup>b</sup>



A<sup>b</sup>Maj7(add2)

D<sup>b</sup>Maj7/A<sup>b</sup>

A<sup>b</sup>

5



They

*Verse 1*

D<sup>b</sup>Maj7/A<sup>b</sup>

A<sup>b</sup>Maj7(add2)

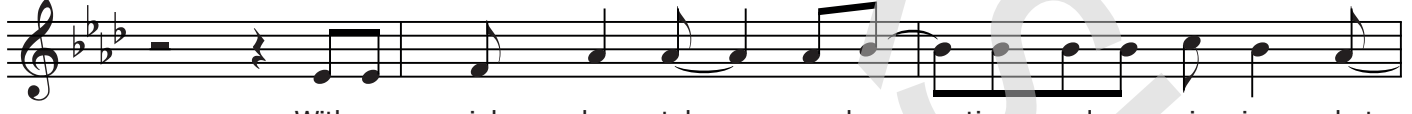
9



paved par - a - dise and put up a par - king lot,

D<sup>b</sup>Maj7/A<sup>b</sup>

12



With a pink ho - tel, a bou - tique, and a swing - ing hot

A<sup>b</sup>Maj7(add2)

*Chorus 1*

A<sup>b</sup>

A<sup>b</sup>Maj7

15



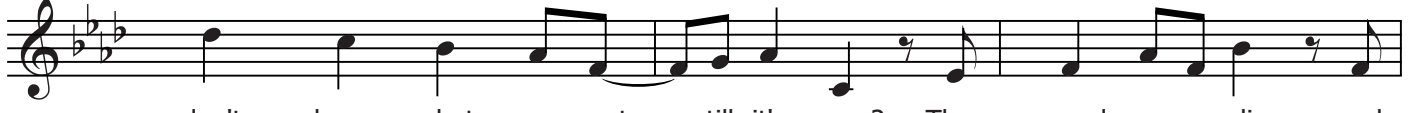
spot. Don't it al - ways seem to go That you

D<sup>b</sup>Maj7/A<sup>b</sup>

A<sup>b</sup>

D<sup>b</sup>Maj7

19



don't know what you got till it's gone? They paved par - a - dise and

Verse 3

45  $D^{\flat}Maj7/A^{\flat}$   $A^{\flat}(add2)$

- - mer, far - mer, put a - way your D. D. \_\_\_\_\_ T.

48  $D^{\flat}Maj7$   $D^{\flat}/E^{\flat}$

I don't care a - bout spots on my ap - ples, Leave \_\_\_\_\_ me the birds and the

Chorus 1

51  $A^{\flat}(add2)$   $A^{\flat}$   $A^{\flat}Maj7$

bees please! \_\_\_\_\_ Don't it al - ways seem \_\_\_\_\_ to go That you

55  $D^{\flat}Maj7/A^{\flat}$   $A^{\flat}(add2)$   $D^{\flat}Maj7$

don't know what you got \_\_\_\_\_ till it's gone? They paved par - a - dise and

58  $E^{\flat}(add2)$   $A^{\flat}Maj7$

put up a park - ing lot. \_\_\_\_\_ Hey now, they've

61  $D^{\flat}Maj7$   $E^{\flat}(add2)$   $A^{\flat}Maj7(add2)$  Woo \_\_\_\_\_

paved par - a - dise to put up a park - ing lot. \_\_\_\_\_

64  $D^{\flat}Maj7/A^{\flat}$   $A^{\flat}$   $D^{\flat}Maj7/A^{\flat}$  *Instr. Solo*

— pap - pap - pap. Woo \_\_\_\_\_ pap - pap - pap.  
Why not?

Chorus 5

100  $E^b(\text{add}2)$   $A^b\text{Maj}7$   $A^b$   $A^b\text{Maj}7$

put up a par - king lot. \_\_\_\_\_ Hey now, now. Don't it al - ways seem

104  $D^b\text{Maj}7/A^b$   $A^b(\text{add}2)$

— to go That you don't know what you've got \_\_\_\_\_ till it's gone? They

107  $D^b\text{Maj}7$   $E^b(\text{add}2)$   $A^b\text{Maj}7$

paved par - a - dise, and put up a park - ing lot. \_\_\_\_\_

110  $A^b\text{Maj}7$   $D^b\text{Maj}7$   $E^b7(\text{add}2)$

Why not? They paved par - a - dise They put up a par - king

113  $A^b\text{Maj}7$   $D^b\text{Maj}7$   $E^b7(\text{add}2)$

lot. Hey hey hey, paved par - a - dise and put up a par - king

117  $A^b\text{Maj}7$   $D^b\text{Maj}7/A^b$   $A^b$

lot. Woo \_\_\_\_\_ pap - pap - pap. Woo \_\_\_\_\_ pap - pap - pap.

Coda

121  $D^b\text{Maj}7/A^b$

I don't wan - na give it, Why you wan - na give it, Why you wan - na

# Big Yellow Taxi



Words & Music by Joni Mitchell  
 Arrangement by Don Henken  
 Original Key Ab Major

*Intro*

F<sup>Maj7</sup>(add2)

B<sup>b</sup>Maj7/F

5 F<sup>Maj7</sup>(add2) B<sup>b</sup>Maj7/F F

They

*Verse 1*

B<sup>b</sup>Maj7/F

F<sup>Maj7</sup>(add2)

9 paved par-a-dise and put up a par - king lot, With a

B<sup>b</sup>Maj7/F

F<sup>Maj7</sup>(add2)

13 pink ho - tel, a bou - tique, and a swing-ing hot spot.

*Chorus 1*

F

F<sup>Maj7</sup>

B<sup>b</sup>Maj7/F

16 Don't it al - ways seem to go That you don't know what you got

F

B<sup>b</sup>Maj7

C7(add2)

20 till it's gone? They paved par - a - dise and put up a par - king lot.

48 B<sup>b</sup>Maj7 B<sup>b</sup>/C

I don't care a-bout spots on my ap-ples, Leave me the birds and the

*Chorus 1*

51 F(add2) F FMaj7

bees please! Don't it al-ways seem to go That you

55 B<sup>b</sup>Maj7/F F(add2) B<sup>b</sup>Maj7

don't know what you got till it's gone? They paved par-a-dise and

58 C(add2) FMaj7 B<sup>b</sup>Maj7

put up a park-ing lot. Hey now, they've paved par-a-dise to

62 C(add2) FMaj7(add2)

put up a park-ing lot. Woo pap-pap-pap. Why not?

65 B<sup>b</sup>Maj7/F F *Instr. Solo* B<sup>b</sup>Maj7/F

Woo pap-pap-pap.

69 F(add2) B<sup>b</sup>Maj7/F F(add2)



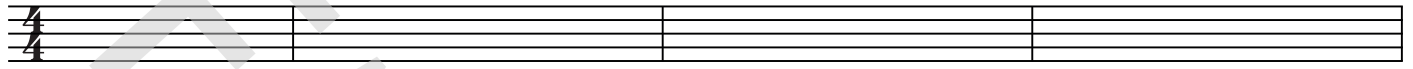
Empty paper

# Big Yellow Taxi

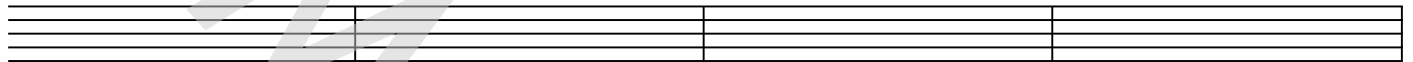
Words & Music by Joni Mitchell  
Arrangement by Don Henken  
Original Key Ab Major

With a groovy feeling  $\text{♩} = 84$

## Intro

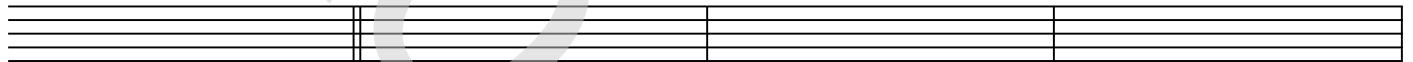


4



## Verse 1

8



12

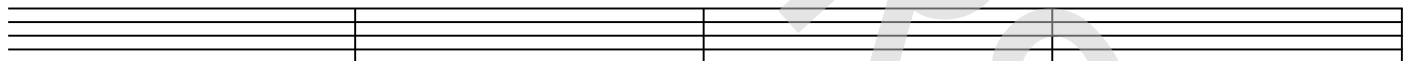


## Chorus 1

16

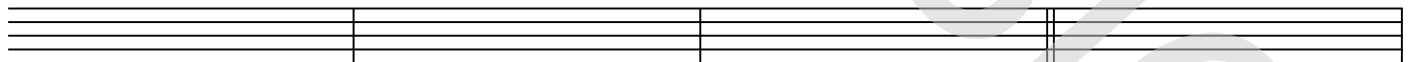


20

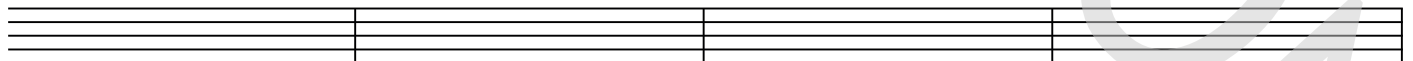


## Verse 2

24

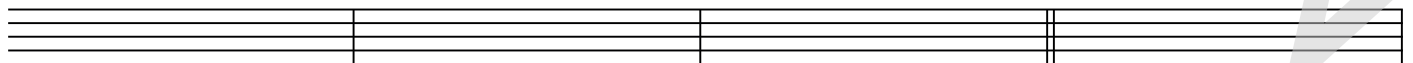


28

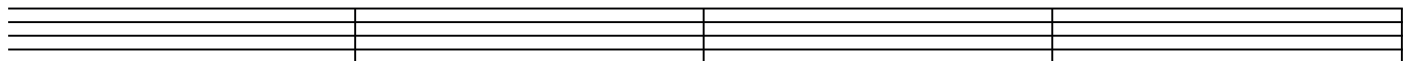


## Chorus 2

32



36



© www.ChorusOnline.com / 0031 (0) 6 - 41 57 77 56