



Thank you for visiting ChorusOnline

We hope this demo version will be of great help for you

Choral Sheet music - Practice mp3's and Backtrack*

What do we stand for:



Legal arrangements

Artists receive a part of the price (royalties)



Quality

Our team consists of the best choir/vocal group arrangers



Speed

Choose, pay (internet) and download within 2 minutes



Price

Nowhere cheaper

* A professional Backtrack goes only with the choir-combo version



This is the life SSATB

Pag.

02	Full score combo C instrument
11	Full score combo Bb instrument
20	Full score combo Eb instrument
29	Full score combo 4 extra staves
41	Full score small combo
53	Full score small combo 2 extra staves
70	Full score vocals (SSATB) piano advanced
79	Full score vocals (SSATB) piano moderated
88	Vocals (SSATB)
97	C instrument
98	Bb instrument
99	Eb instrument
100	Piano advanced
104	Piano moderated
108	Synthesizer
110	Guitar
112	Bassguitar
114	Drumkit
116	Percussion
118	Leadsheet in C# minor (melody, lyrics, chords) orig. Key
122	Leadsheet in E minor (melody, lyrics, chords)
126	Empty paper

The index numbers above are based on the original (complete) PDF-file

In this smaller DEMO-version, the numbers above do NOT match this file!!



SATB Combo C

This Is The Life

Words and Music by Amy MacDonald

Arranged by Dirk Kokx

Original Key C# minor

With a drive ♩ = 95

Intro Verse 1

Soprano

Alto *mf*
Oh the wind whis-tles down ___ the

Tenor

Bass

C Instr.
E^m C *mp* G *mf* B^m E^m

Piano Adv. *mf*

Synthesizer

Bass Guitar *mf*
dead strokes
strumming freely

Drum Set *mp*
brushes
hihat (foot)
continuous 16th on snare (ghost notes)
Shaker

Percussion *mp*

This Is The Life 3

SATB Combo C

15

S

A

T

B

C

P.A.

Synth

Bass

D.S.

Perc.

And you're sing-ing the songs...
morn-ing and your head feels twice the size Where you gon-na go? Where you gon-na go? Where you gon-na sleep to-night? ___ And you're sing-ing the songs...
morn-ing and your head feels twice the size Where you gon-na go? Where you gon-na go? Where you gon-na sleep to-night? ___ And you're sing-ing the songs...
And you're sing-ing the songs...
C G B^m

18

S

A

T

B

C

P.A.

Synth

Bass

D.S.

Perc.

— think-ing this is the life ___ And you wake up in the morn-ing and your head feels twice the size Where you gon-na go? Where you gon-na go? Where you gon-na sleep to-night? ___
— think-ing this is the life ___ And you wake up in the morn-ing and your head feels twice the size Where you gon-na go? Where you gon-na go? Where you gon-na sleep to-night? ___
— think-ing this is the life ___ And you wake up in the morn-ing and your head feels twice the size Where you gon-na go? Where you gon-na go? Where you gon-na sleep to-night? ___
— think-ing this is the life ___ And you wake up in the morn-ing and your head feels twice the size Where you gon-na go? Where you gon-na go? Where you gon-na sleep to-night? ___
E^m C G

This Is The Life 5

SATB Combo C

30 *mp* oo ——— Ro-ber Ri - ger's mot-ley crew *mf* And you're sing-ing the songs

A sit - ting there with no-thing to do — Talk-ing a - bout Ro-ber Ri-ger and his mot-ley crew — And where ——— you're gon-na go? Where you're gon-na sleep to-night? ——— *mf* And you're sing-ing the songs

T *mp* oo ——— Ro-ber Ri - ger's mot-ley crew ——— where gon - - - na sleep *mf* And you're sing-ing the songs

B *mp* oo ——— Ro-ber Ri - ger's mot-ley crew ——— *mf* And you're sing-ing the songs

C

P.A. *E^m* *C* *G* *B^m*

Synth *Harp* *mf*

Bass

D.S. *2*

Perc. *2*

34 *Chorus 2*

S think-ing this is the life — And you wake up in the morn-ing and your head feels twice the size Where you gon - na go? Where you gon - na go? Where you gon - na sleep to - night? —

A think-ing this is the life — And you wake up in the morn-ing and your head feels twice the size Where you gon - na go? Where you gon - na go? Where you gon - na sleep to - night? —

T think-ing this is the life — And you wake up in the morn-ing and your head feels twice the size Where you gon - na go? Where you gon - na go? Where you gon - na sleep to - night? —

B think-ing this is the life — And you wake up in the morn-ing and your head feels twice the size Where you gon - na go? Where you gon - na go? Where you gon - na sleep to - night? —

C

P.A. *E^m* *C* *G*

Synth *El Piano (Rhodes)*

Bass

D.S.

Perc.

This Is The Life 7

SATB Combo C

Chorus 3

45

S

A

T

B

C

P.A.

Synth

Bass

D. S.

Perc.

And you're singing the songs thinking this is the life... And you wake up in the

B^m *E^m* *C* *G* *B^m* *E^m*

mf *mf* *mf*

Harp

El. Piano (Rhodes)

mf *mf*

51

S

A

T

B

C

P.A.

Synth

Bass

D. S.

Perc.

soprano & mezzo

And you're singing the songs thinking this is the life... And you wake up in the

morning and your head feels twice the size Where you gon-na go? Where you gon-na go? Where you gon-na sleep to-night? ... And you're singing the songs thinking this is the life... And you wake up in the

C *G* *B^m* *E^m*

mp *mf*

Harp

This Is The Life 9

SATB Combo C

62

S *Slowly*
— think-ing this is the life — And you wake up in the morn-ing and your head feels twice the size Where you gon-na go? Where you gon-na go? Where you gon-na sleep to-night? —

A *(optional solo)*
— think-ing this is the life — And you wake up in the morn-ing and your head feels twice the size Where you gon-na go? Where you gon-na go? Where you gon-na sleep to-night? — Where you gon-na sleep to-

T
Where you gon-na go? Where you gon-na go? Where you gon-na sleep to-night? —

B
think-ing this is the life — And you wake up in the morn-ing and your head feels twice the size Where you gon-na go? Where you gon-na go? Where you gon-na sleep to-night? —

C

P.A. *E^m C G B^m*

Synth

Bass

D.S.

Perc.

Coda
66 *a tempo*

S *p*

A *p*
night?

T *p*
Where you gon - - na sleep

B *p*
Sleep to - night

C *p mp*

P.A. *E^m C G B^m E^m*

Synth

Bass

D.S.

Perc.

2 This Is The Life

SATB Combo Bb

7

S *p*

A cold dark street to-night — And the peo-ple they were danc-ing to the mu-sic vibe — And the boys — chase the girls with the curls in their hair — While the

T *p*

B *p*

Bb

P.A. C G B^m E^m

Synth *El. Piano (Rhodes)* *mf*

Bass

D.S.

Perc.

11

S *mf* *Chorus 1*

A aah and the songs — they get lou-der each one bet-ter than be-fore —

T shy tor-men-ted youth sit way o-ver there — and the songs — they get lou-der each one bet-ter than be-fore — And you're sing-ing the songs think-ing this is the life — And you wake up in the

B aah and the songs — they get lou-der each one bet-ter than be-fore — And you're sing-ing the songs think-ing this is the life — And you wake up in the

Bb

P.A. C G B^m E^m

Synth

Bass

D.S.

Perc.

4 This Is The Life

SATB Combo Bb

Interlude 1

21

S — Where you gon-na sleep to-night?

A — Where you gon-na sleep to-night? So you're

T —

B — So you're

Bb —

P.A. *f* if guitar plays solo play only chords *mf*

Synth

Bass *f*

D.S.

Perc.

Chords: B^m, E^m, C, G, B^m

Verse 2

26

S — And you're wait-ing out - side Jim-my's front door

A — head-ing down the road in your ta - xi for four — And you're wait-ing out - side Jim-my's front door But no - bo - dy's in — and no - bo - dy's home — 'til — four So you're

T — in your ta - xi for four — no - bo - dy's in — no - bo - dy's home — 'til — four

B — head-ing down the road in your ta - xi for four —

Bb —

P.A. *E^m* *C* *G* *B^m*

Synth *Vibraphone* *mf*

Bass *mf*

D.S.

Perc.

6 This Is The Life

SATB Combo Bb

37

S And you're sing-ing the songs think-ing this is the life. And you wake up in the morn-ing and your head feels twice the size Where you gon-na go?

A And you're sing-ing the songs think-ing this is the life. And you wake up in the morn-ing and your head feels twice the size Where you gon-na go?

T And you're sing-ing the songs Wake up in the mor-

B And you're sing-ing the songs Wake up in the mor-

Bb

P.A. B^m E^m C

Synth

Bass

D.S.

Perc.

40

S Where you gon-na go? Where you gon-na sleep to-night?

A Where you gon-na go? Where you gon-na sleep to-night?

T - - - ning Where you gon-na sleep to-night?

B - - - ning Where you gon-na sleep to-night?

Bb

P.A. G B^m E^m *mf* C G

f if guitar plays solo play only chords

Synth

Bass *f*

D.S.

Perc.

8 This Is The Life

SATB Combo Bb

Chorus 4

55

S
morn-ing and your head feels twice the size Where you gon-na go? Where you gon-na go? Where you gon-na sleep to-night? — And you're sing-ing the songs think-ing this is the life. — And you wake up in the

A
morn-ing and your head feels twice the size Where you gon-na go? Where you gon-na go? Where you gon-na sleep to-night? — And you're sing-ing the songs think-ing this is the life. — And you wake up in the

T
And you're sing-ing the songs

B
And you're sing-ing the songs

Bb
C G B^m E^m

P.A.
Piano accompaniment with chords C, G, B^m, E^m

Synth
El Piano (Rhodes)

Bass

D.S.
Drum set

Perc.
Percussion

59

S
morn-ing and your head feels twice the size Where you gon-na go? Where you gon-na go? Where you gon-na sleep to-night? — And you're sing-ing the songs —

A
morn-ing and your head feels twice the size Where you gon-na go? Where you gon-na go? Where you gon-na sleep to-night? — And you're sing-ing the songs —

T
Wake up — in the mor - - - ning — Where you gon - na sleep — to - night —

B
Wake up — in the mor - - - ning — Where you gon - na sleep — to - night —

Bb
C G B^m

P.A.
Piano accompaniment with chords C, G, B^m

Synth
El Piano (Rhodes)

Bass

D.S.
Drum set

Perc.
Percussion



SATB Combo Eb

This Is The Life

Words and Music by Amy MacDonald
Arranged by Dirk Kokx
Original Key C# minor

With a drive ♩ = 95

DEMO

Intro Verse 1

Soprano

Alto *mf*

Tenor

Bass

Eb Instr.

Piano Adv. *mf*

Synthesizer

Bass Guitar *mf*

Drum Set *mp*

Percussion *mp*

dead strokes

strumming, freely

brushes

continuous 16th on snare (ghost notes)

Shaker

hihat (foot)

E^m C G B^m E^m

mp mf

© www.ChorusOnline.com / 0031 (0) 6 - 41 57 77 56

This Is The Life 3

SATB Combo Eb

15

S
A
T
B

And you're sing-ing the songs...
morn-ing and your head feels twice the size Where you gon-na go? Where you gon-na go? Where you gon-na sleep to-night? And you're sing-ing the songs...
morn-ing and your head feels twice the size Where you gon-na go? Where you gon-na go? Where you gon-na sleep to-night? And you're sing-ing the songs...
And you're sing-ing the songs...

P.A.
C G B^m

Synth

Bass

D.S.

Perc.

18

S
A
T
B

— think-ing this is the life — And you wake up in the morn-ing and your head feels twice the size Where you gon-na go? Where you gon-na go? Where you gon-na sleep to-night? —
— think-ing this is the life — And you wake up in the morn-ing and your head feels twice the size Where you gon-na go? Where you gon-na go? Where you gon-na sleep to-night? —
— think-ing this is the life — And you wake up in the morn-ing and your head feels twice the size Where you gon-na go? Where you gon-na go? Where you gon-na sleep to-night? —
— think-ing this is the life — And you wake up in the morn-ing and your head feels twice the size Where you gon-na go? Where you gon-na go? Where you gon-na sleep to-night? —

E^m C G

P.A.

Synth

Bass

D.S.

Perc.

This Is The Life 5
SATB Combo Eb

30 *mp* oo ————— Ro-ber Ri - ger's mot-ley crew *mf* And you're sing-ing the songs

A sit - ting there with no-thing to do ___ Talk-ing a - bout Ro-ber Ri-ger and his mot-ley crew ___ And where ___ you're gon-na go? Where you're gon-na sleep to-night? ___ *mf* And you're sing-ing the songs

T oo ————— Ro-ber Ri - ger's mot-ley crew ___ where gon - - - na sleep *mf* And you're sing-ing the songs

B oo ————— Ro-ber Ri - ger's mot-ley crew ___ And you're sing-ing the songs

Eb

P.A. *E^m* *C* *G* *B^m*

Synth *Harp* *mf*

Bass

D. S.

Perc.

34 *Chorus 2*

S think-ing this is the life ___ And you wake up in the morn-ing and your head feels twice the size Where you gon - na go? Where you gon - na go? Where you gon - na sleep to - night? ___

A think-ing this is the life ___ And you wake up in the morn-ing and your head feels twice the size Where you gon - na go? Where you gon - na go? Where you gon - na sleep to - night? ___

T think-ing this is the life ___ And you wake up in the morn-ing and your head feels twice the size Where you gon - na go? Where you gon - na go? Where you gon - na sleep to - night? ___

B think-ing this is the life ___ And you wake up in the morn-ing and your head feels twice the size Where you gon - na go? Where you gon - na go? Where you gon - na sleep to - night? ___

Eb

P.A. *E^m* *C* *G*

Synth *El Piano (Rhodes)*

Bass

D. S.

Perc.

This Is The Life 7

SATB Combo Eb

Chorus 3

45

S

A

T

B

Eb

P.A.

Synth

Bass

D. S.

Perc.

And you're singing the songs thinking this is the life... And you wake up in the

mf

B^m *E^m* *C* *G* *B^m* *E^m*

Harp *mf* *El. Piano (Rhodes)* *mf*

59

S

A

T

B

Eb

P.A.

Synth

Bass

D. S.

Perc.

soprano & mezzo

And you're singing the songs... thinking this is the life... And you wake up in the

morn-ing and your head feels twice the size Where you gon-na go? Where you gon-na go? Where you gon-na sleep to-night?... And you're sing-ing the songs... thinking this is the life... And you wake up in the

mp *mf*

C *G* *B^m* *E^m*

Harp

This Is The Life 9

SATB Combo Eb

62

S *Slowly*
— think-ing this is the life — And you wake up in the morn-ing and your head feels twice the size Where you gon-na go? Where you gon-na go? Where you gon-na sleep to-night? — (optional solo)

A — think-ing this is the life — And you wake up in the morn-ing and your head feels twice the size Where you gon-na go? Where you gon-na go? Where you gon-na sleep to-night? — Where you gon-na sleep to-

T — Where you gon-na go? Where you gon-na go? Where you gon-na sleep to-night? —

B — think-ing this is the life — And you wake up in the morn-ing and your head feels twice the size Where you gon-na go? Where you gon-na go? Where you gon-na sleep to-night? —

E♭

P.A. *E^m* *C* *G* *B^m*

Synth

Bass

D. S.

Perc.

Coda
63 *a tempo*

S — — — — — *p* — — — — —

A — — — — — *p* — — — — —

T night? — — — — — *p* — — — — —

B — — — — — *p* — — — — — Where you gon - - na sleep

E♭ — — — — — *p* — — — — — *mp* — — — — —

P.A. *E^m* *C* *G* *B^m* *E^m*

Synth

Bass

D. S.

Perc.

2 This Is The Life

SATB 4 extra staves

S *p* ∞ aah

A to the mu-sic vibe— *p* And the boys— chase the girls with the cuts in their hair— While the sly tar-mar-ted youth sit way o-ver there— *mf* and the songs— they get lou - der each one bet-ter than be-fore—

T *p* ∞ aah *mf* and the songs— they get lou - der each one bet-ter than be-fore— *mf* and the songs— they get lou - der each one bet-ter than be-fore— *mf* and the songs— they get lou - der each one bet-ter than be-fore—

B *p* ∞ aah *mf* and the songs— they get lou - der each one bet-ter than be-fore— *mf* and the songs— they get lou - der each one bet-ter than be-fore— *mf* and the songs— they get lou - der each one bet-ter than be-fore— *mf* and the songs— they get lou - der each one bet-ter than be-fore—

1

2

3

4

P.A. *Bm* *E^m* *G* *Bm*

Synth *mf* *El Piano (Ritard)* *mf* *B*

Bass

D.S.

Perc.



6 This Is The Life

SATB 4 extra staves

mf **Chorus 2**

S — Robert Ri - ger's motley crew —
 And you're singing the songs thinking this is the life — And you wake up in the morning and your head feels twice the size Where you gon-na go?

A bout Robert Riger and his motley crew — And where — you're gon-na go? Where you're gon-na sleep tonight? —
 And you're singing the songs thinking this is the life — And you wake up in the morning and your head feels twice the size Where you gon-na go?

T — Robert Ri - ger's motley crew — where gon - - - na sleep *mf* And you're singing the songs thinking this is the life — And you wake up in the morning and your head feels twice the size Where you gon-na go?

B — Robert Ri - ger's motley crew —
 And you're singing the songs thinking this is the life — And you wake up in the morning and your head feels twice the size Where you gon-na go?

1
2
3
4

C G Bm Em C

El Piano/Ritard.

Synth
P.A.
Bass
D. S.
Perc.



8 This Is The Life

SATB 4 EXTRA STAVES

Introduce 2

Sheet music for SATB 4 EXTRA STAVES, including vocal parts (Soprano, Alto, Tenor, Bass) and instrumental accompaniment (Piano, Synth, D.S., Perc.).

Vocal Parts:

- Soprano (S):** *ff* (first measure)
- Alto (A):** *ff* (first measure)
- Tenor (T):** *ff* (first measure), lyrics: "Where you gon-na sleep to-night? Where you gon-na sleep to-night?"
- Bass (B):** *ff* (first measure), lyrics: "Where you gon-na sleep to-night?"

Instrumental Parts:

- P.A. (Piano):** Chords: B^m, E^m, C, G, B^m, E^m, C, G. Includes lyrics: "If you're plannin' to do right, only do it now!"
- Synth:** *f* (first measure)
- D.S. (Drum Set):** *f* (first measure)
- Perc. (Percussion):** *f* (first measure)

Chords: B^m, E^m, C, G, B^m, E^m, C, G

Dynamic Markings: *ff*, *f*, *mf*

Performance Notes: *harp* (first measure), *mf* (first measure)

12 This Is The Life

SATB 4 EXTRA STAVES

64

Slowly

Coda
a tempo

S morning and your head feels twice the size Where you gonna go? Where you gonna sleep to - night? — (optional solo)

A morning and your head feels twice the size Where you gonna go? Where you gonna sleep to - night? — Where you gonna sleep to - night?

T Where you gonna go? Where you gonna go? Where you gonna sleep to - night? —

B morning and your head feels twice the size Where you gonna go? Where you gonna go? Where you gonna sleep to - night? —

1

2

3

4

C G Bm Em C G Bm Em

Synth

P.A.

Bass

D. S.

Perc.

8

p

p

p

Sleep to - night oo

Where you gon - na sleep

2 This Is The Life

SATB small Combo

Verse 1

S
A
T
B

wind whistles down the cold dark street to-night And the people they were dancing

E^m C G

P.A.
Bass
D.S.
Perc.

S
A
T
B

oo... aah and the songs...
to the music vibe And the boys chase the girls with the curls in their hair While the shy tormented youth sit way o-ver there and the songs...
oo... aah and the songs...
oo... aah and the songs...

B^m E^m C

P.A.
Bass
D.S.
Perc.

4 This Is The Life

SATB small Combo

18

S
— thinking this is the life— And you wake up in the morn-ing and your head feels twice the size Where you gon-na go? Where you gon-na go? Where you gon-na sleep to-night?

A
— thinking this is the life— And you wake up in the morn-ing and your head feels twice the size Where you gon-na go? Where you gon-na go? Where you gon-na sleep to-night?

T
8
— thinking this is the life— And you wake up in the morn-ing and your head feels twice the size Where you gon-na go? Where you gon-na go? Where you gon-na sleep to-night?

B
— thinking this is the life— And you wake up in the morn-ing and your head feels twice the size Where you gon-na go? Where you gon-na go? Where you gon-na sleep to-night?

E^m C G

P.A.
P.A.
Bass
D. S.
Perc.

Interlude 1

21

S
— Where you gon-na sleep to-night?

A
— Where you gon-na sleep to-night?

T
8
—

B
—

B^m E^m C G

P.A.
f if guitar playss solo play only chords

Bass
D. S.
Perc.

6 This Is The Life

SATB small Combo

31 *mf*

S — Ro-ber Ri - ger's mot-ley crew — And you're sing-ing the songs

A — bout Ro-ber Ri-ger and his mot-ley crew — And where — you're gon-na go? Where you're gon-na sleep to-night? — And you're sing-ing the songs

T — Ro-ber Ri - ger's mot-ley crew — where gon - - - na sleep — And you're sing-ing the songs

B — Ro-ber Ri - ger's mot-ley crew — And you're sing-ing the songs

C G B^m

P.A.

Bass

D. S.

Perc.

Chorus 2

34

S think-ing this is the life — And you wake up in the morn-ing and your head feels twice the size Where you gon - na go?

A think-ing this is the life — And you wake up in the morn-ing and your head feels twice the size Where you gon - na go?

T think-ing this is the life — And you wake up in the morn-ing and your head feels twice the size Where you gon - na go?

B think-ing this is the life — And you wake up in the morn-ing and your head feels twice the size Where you gon - na go?

E^m C

P.A.

Bass

D. S.

Perc.

8 This Is The Life

SATB small Combo

Interlude 2

41

S

A

T

B

Where you gon-na sleep to-night?

Where you gon-na sleep to-night?

P.A.

f if guitar playss solo play only chords

Bass

D. S.

Perc.

45

S

A

T

B

And you're sing-ing the songs

P.A.

Bass

D. S.

Perc.

10 This Is The Life

SATB small Combo

Chorus 4

56

S Where you gon-na go? Where you gon-na sleep to-night? _____ And you're sing-ing the songs think-ing this is the life____ And you wake up in the

A Where you gon-na go? Where you gon-na sleep to-night? _____ And you're sing-ing the songs think-ing this is the life____ And you wake up in the

T _____ And you're sing-ing the songs

B _____ And you're sing-ing the songs

P.A. G B^m E^m

Bass

D. S.

Perc.

59

S morn - ing and your head feels twice the size Where you gon - na go? Where you gon - na go? Where you gon - na sleep to - night?__

A morn - ing and your head feels twice the size Where you gon - na go? Where you gon - na go? Where you gon - na sleep to - night?__

T _____ Wake up _____ in the mor - - - - ning _____

B _____ Wake up _____ in the mor - - - - ning _____

P.A. C G

Bass

D. S.

Perc.

12 This Is The Life

SATB small Combo

Coda
66 *a tempo*

S
A
T
B

night?
8

p *p* *p*

Where you gon - na sleep

Sleep to - night

E^m C G B^m E^m

P.A.
Bass
D. S.
Perc.

2 This Is The Life

SATB small Combo extra staves

Soprano (S): *p* peo - ple they were danc - ing to the mus - ic vib - ing And the boys - chase the girls with the curls in their hair - While the shy - tor - ment - ed youth sit way o - ver there - and the songs - *mf*

Alto (A): *p* peo - ple they were danc - ing to the mus - ic vib - ing And the boys - chase the girls with the curls in their hair - While the shy - tor - ment - ed youth sit way o - ver there - and the songs - *mf*

Tenor (T): *p* peo - ple they were danc - ing to the mus - ic vib - ing And the boys - chase the girls with the curls in their hair - While the shy - tor - ment - ed youth sit way o - ver there - and the songs - *mf*

Bass (B): *p* peo - ple they were danc - ing to the mus - ic vib - ing And the boys - chase the girls with the curls in their hair - While the shy - tor - ment - ed youth sit way o - ver there - and the songs - *mf*

Piano/Accompaniment (P.A.): G Bm Em C

Bass

D.S.

Perc.

4 This Is The Life

SATB small Combo extra staves

16

S
A
T
B

Where you gon - na go? Where you gon - na sleep to - night? ———
Where you gon - na go? Where you gon - na sleep to - night? ———
Where you gon - na go? Where you gon - na sleep to - night? ———
Where you gon - na go? Where you gon - na sleep to - night? ———

And you're sing - ing the songs ——— think - ing this is the life ——— And you wake up in the
And you're sing - ing the songs ——— think - ing this is the life ——— And you wake up in the
And you're sing - ing the songs ——— think - ing this is the life ——— And you wake up in the
And you're sing - ing the songs ——— think - ing this is the life ——— And you wake up in the

1
2

G
B^m
E^m

P.A.
Bass
D.S.
Perc.

6 This Is The Life

SATB small Combo extra staves

Verse 2

23

S
A
T
B

And you're wait-ing out - side Jim-my's front door
So you're head-ing down the road in your ta - xi for four — And you're wait-ing out - side Jim-my's front door But
in your ta - xi for four —
So you're head-ing down the road in your ta - xi for four —

1
2

P.A.
C G Bm Em C

mf

Bass
D.S.
Perc.

8 This Is The Life

SATB small Combo extra staves

Chorus 2

32

S *mf* And you're sing - ing the songs think - ing this is the life — And you wake up in the

A — you're gon - na go? Where you're gon - na sleep to - night? — *mf* And you're sing - ing the songs think - ing this is the life — And you wake up in the

T where gon - - - na sleep *mf* And you're sing - ing the songs think - ing this is the life — And you wake up in the

B — — — — — *mf* And you're sing - ing the songs think - ing this is the life — And you wake up in the

1

2

P.A. G B^m E^m

Bass

D.S.

Perc.

10 This Is The Life

SATB small Combo extra staves

36

S — think-ing this is the life — And you wake up in the morn-ing and your head feels twice the size Where you gon-na go? Where you gon-na go? Where you gon-na sleep to-night? —

A — think-ing this is the life — And you wake up in the morn-ing and your head feels twice the size Where you gon-na go? Where you gon-na go? Where you gon-na sleep to-night? —

T — — — — — Wake up — — — — — in the mor - - - ning — — — — —

B — — — — — Wake up — — — — — in the mor - - - ning — — — — —

1

2

P.A. E^m C G

Bass

D.S.

Perc.

12 This Is The Life

SATB small Combo extra staves

Chorus 3

Soprano (S): *4th* *f*

Alto (A): *f*

Tenor (T): *f*

Bass (B): *f*

Piano Accompaniment (P.A.): *f*

Double Bass (D.S.): *f*

Percussion (Perc.): *f*

Lyrics: And you're sing-ing the songs think-ing this is the life— And you wake up in the

Chords: C, G, B^m, E^m

Dynamics: *mf*, *f*

14 This Is The Life

SATB small Combo extra staves

Chorus 4

55

S morning and your head feels twice the size Where you gon-na go? Where you gon-na sleep to-night? ——— And you're singing the songs think-ing this is the life ——— And you wake up in the

A morning and your head feels twice the size Where you gon-na go? Where you gon-na sleep to-night? ——— And you're singing the songs think-ing this is the life ——— And you wake up in the

T 8 And you're singing the songs

B And you're singing the songs

1

2

C G Bm Em

P.A.

Bass

D.S.

Perc.

16 This Is The Life

SATB small Combo extra staves

2nd *Slowerly*

S — thinking this is the life — And you wake up in the morn-ing and your head feels twice the size Where you gon-na go? Where you gon-na sleep to-night? — (optional solo)

A — thinking this is the life — And you wake up in the morn-ing and your head feels twice the size Where you gon-na go? Where you gon-na sleep to-night? — Where you gon-na sleep to-

T — — — — — Where you gon-na go? Where you gon-na go? Where you gon-na sleep to-night? — — — — —

B — thinking this is the life — And you wake up in the morn-ing and your head feels twice the size Where you gon-na go? Where you gon-na sleep to-night? — — — — —

1
2

P.A. E^m C G B^m

Bass

D.S.

Perc.



SATB Piano advanced

This Is The Life

Words and Music by Amy MacDonald

Arranged by Dirk Kokx

Original Key C# minor

With a drive ♩ = 95

Intro

Verse 1

Soprano

Alto

Tenor

Bass

Piano Adv.

mf

Oh the wind whistles down the

E^m C G B^m E^m

S

A

T

B

P.A

7

cold dark street to-night And the peo-ple they were danc - ing to the mu-sic vibe And the boys

C G B^m

This Is The Life 3
SATB Piano advanced

17

S And you're sing - ing the songs — think - ing this is the life — And you wake up in the

A — And you're sing - ing the songs — think - ing this is the life — And you wake up in the

T — And you're sing - ing the songs — think - ing this is the life — And you wake up in the

B — And you're sing - ing the songs — think - ing this is the life — And you wake up in the

P.A. B^m E^m

19

S morn - ing and your head feels twice the size Where you gon - na go? Where you gon - na go? Where you gon - na sleep to - night? —

A morn - ing and your head feels twice the size Where you gon - na go? Where you gon - na go? Where you gon - na sleep to - night? —

T morn - ing and your head feels twice the size Where you gon - na go? Where you gon - na go? Where you gon - na sleep to - night? —

B morn - ing and your head feels twice the size Where you gon - na go? Where you gon - na go? Where you gon - na sleep to - night? —

P.A. C G

Interlude 1

21

S — Where you gon - na sleep to - night?

A — Where you gon - na sleep to - night? So you're

T —

B — So you're

P.A. B^m E^m C G B^m

f if guitar playss solo play only chords *mf*

This Is The Life 5
SATB Piano advanced

35

S
A
T
B

morn - ing and your head feels twice the size Where you gon - na go? Where you gon - na go? Where you gon - na sleep to - night? _

C G

P.A

37

S
A
T
B

— And you're sing - ing the songs — think - ing this is the life — And you wake up in the

B^m E^m

P.A

39

S
A
T
B

morn - ing and your head feels twice the size Where you gon - na go? Where you gon - na go? Where you gon - na sleep to - night? _

C G

P.A

Wake up — in the mor - - - - ning —

This Is The Life 7
SATB Piano advanced

52 *soprano & mezzo*

S
A
T
B

And you're sing-ing the songs — think-ing this is the life — And you wake up in the
Where you gon-na go? Where you gon-na sleep to-night? — And you're sing-ing the songs — think-ing this is the life — And you wake up in the

P.A

G B^m E^m

55

S
A
T
B

morn-ing and your head feels twice the size Where you gon - na go? Where you gon - na go? Where you gon - na sleep to - night? —
morn-ing and your head feels twice the size Where you gon - na go? Where you gon - na go? Where you gon - na sleep to - night? —

P.A

C G

57 *Chorus 4*

S
A
T
B

— And you're sing - ing the songs think - ing this is the life — And you wake up in the
— And you're sing - ing the songs think - ing this is the life — And you wake up in the
— And you're sing - ing the songs
— And you're sing - ing the songs

P.A

B^m E^m

This Is The Life 9
SATB Piano advanced

65 *Slowly* *Coda*
a tempo *p*

S

A (optional solo) *p*

T *p*

B *p*

P.A.

Where you gon-na sleep to - night?

Where you gon - na sleep

Sleep to - night

B^m E^m C G B^m E^m

2 This Is The Life

SATB Piano moderated

10 *p* *mf*

S oo - - - - - aah and the songs_

A _ chase the girls with the curls in their hair_ While the shy tor - men - ted youth sit way o - ver there_ and the songs_

T *p* *mf*
8 oo - - - - - aah and the songs_

B *p* *mf*
8 oo - - - - - aah and the songs_

P.M. *E^m* *C*

Chorus 1

12

S _ they get lou - der each one bet - ter than be - fore_

A _ they get lou - der each one bet - ter than be - fore_ And you're sing - ing the songs think - ing this is the life_ And you wake up in the

T *8* _ they get lou - der each one bet - ter than be - fore_ And you're sing - ing the songs think - ing this is the life_ And you wake up in the

B _ they get lou - der each one bet - ter than be - fore_

G *B^m* *E^m*

P.M.

15

S

A morn - ing and your head feels twice the size Where you gon - na go? Where you gon - na go? Where you gon - na sleep to - night?_

T *8* morn - ing and your head feels twice the size Where you gon - na go? Where you gon - na go? Where you gon - na sleep to - night?_

B

C *G*

P.M.

4 This Is The Life

SATB Piano moderated

Verse 2

26

S And you're wait-ing out-side Jim-my's front door

A head-ing down the road in your ta-xi for four ___ And you're wait-ing out-side Jim-my's front door But no-bo-dy's in ___ and no-bo-dy's home ___ 'til ___

T in your ta-xi for four ___ no-bo-dy's in ___ no-bo-dy's home ___ 'til ___

B head-ing down the road in your ta-xi for four ___

P.M. E^m C G

29

S oo ___ Ro-ber-t Ri - ger's mot-ley crew ___

A ___ four So you're sit-ting there with no-thing to do ___ Talk-ing a - bout Ro-ber-t Ri-ger and his mot-ley crew ___ And where ___

T ___ four oo ___ Ro-ber-t Ri - ger's mot-ley crew ___

B oo ___ Ro-ber-t Ri - ger's mot-ley crew ___

P.M. B^m E^m C

mp

32

S And you're sing-ing the songs

A ___ you're gon - na go? Where you're gon - na sleep to - night? ___ And you're sing-ing the songs

T where gon - - - na sleep And you're sing-ing the songs

B And you're sing-ing the songs

P.M. G B^m

mf

6 This Is The Life

SATB Piano moderated

Interlude 2

40

S
Where you gon-na go? Where you gon-na sleep to-night? _____

A
Where you gon-na go? Where you gon-na sleep to-night? _____

T
ning _____ Where you gon-na sleep to-night?

B
ning _____ Where you gon-na sleep to-night?

P.M
G B^m E^m

f if guitar plays solo play only chords

43

S

A

T

B

P.M
C G B^m E^m C G

Chorus 3

49

S

A
And you're sing-ing the songs think-ing this is the life___ And you wake up in the

T

B

P.M
B^m E^m

mf

8 This Is The Life

SATB Piano moderated

Chorus 4

57

S
A
T
B

And you're sing - ing the songs think - ing this is the life ___ And you wake up in the

And you're sing - ing the songs think - ing this is the life ___ And you wake up in the

And you're sing - ing the songs

And you're sing - ing the songs

P.M

B^m E^m

59

S
A
T
B

morn - ing and your head feels twice the size Where you gon - na go? Where you gon - na go? Where you gon - na sleep to - night? _

morn - ing and your head feels twice the size Where you gon - na go? Where you gon - na go? Where you gon - na sleep to - night? _

Wake up ___ in the mor - - - - ning ___

Wake up ___ in the mor - - - - ning ___

P.M

C G

61

S
A
T
B

And you're sing - ing the songs ___ think - ing this is the life ___ And you wake up in the

And you're sing - ing the songs ___ think - ing this is the life ___ And you wake up in the

Where you gon - na sleep ___ to - night

Where you gon - na sleep ___ to - night ___ think - ing this is the life ___ And you wake up in the

P.M

B^m E^m



SATB

This Is The Life

Words and Music by Amy MacDonald
Arranged by Dirk Kokx
Original Key C# minor

With a drive ♩ = 95

Intro

Verse 1

Musical score for Soprano, Alto, Tenor, and Bass. The score is in 4/4 time with a key signature of one sharp (F#). The tempo is marked 'With a drive' at 95 beats per minute. The piece begins with an 'Intro' section consisting of a triplet of quarter notes. The 'Verse 1' section begins with the lyrics 'Oh the wind whis-tles down ___ the'. The Alto part is marked *mf*. The Soprano, Tenor, and Bass parts have a triplet of quarter notes at the start of the verse.

Musical score for Soprano (S), Alto (A), Tenor (T), and Bass (B). The score continues from the previous system. The Alto part has the lyrics 'cold dark street to-night ___ And the peo-ple they were danc - ing to the mu-sic vibe ___ And the boys ___'. The Soprano, Tenor, and Bass parts have a triplet of quarter notes at the start of the line.

© www.ChorusOnline.com / 0031 (0) 6 - 41 57 77 56

This Is The Life 3
SATB

16

S
A
T
B

And you're sing-ing the songs—
Where you gon-na go? Where you gon-na sleep to-night? — And you're sing-ing the songs—
Where you gon-na go? Where you gon-na sleep to-night? — And you're sing-ing the songs—
And you're sing-ing the songs—

18

S
A
T
B

—thinking this is the life— And you wake up in the morning and your head feels twice the size Where you gon-na go?
—thinking this is the life— And you wake up in the morning and your head feels twice the size Where you gon-na go?
—thinking this is the life— And you wake up in the morning and your head feels twice the size Where you gon-na go?
—thinking this is the life— And you wake up in the morning and your head feels twice the size Where you gon-na go?

20

S
A
T
B

Interlude 1

Where you gon-na go? Where you gon-na sleep to - night? Where you gon-na sleep to-night?
Where you gon-na go? Where you gon-na sleep to - night? Where you gon-na sleep to-night?
Where you gon-na go? Where you gon-na sleep to - night?
Where you gon-na go? Where you gon-na sleep to - night?

32 *mf*

S And you're sing-ing the songs

A — you're gon-na go? Where you're gon-na sleep to-night? — And you're sing-ing the songs

T 8 where gon - - - na sleep And you're sing-ing the songs

B *mf* And you're sing-ing the songs

Chorus 2

34

S thinking this is the life — And you wake up in the morning and your head feels twice the size Where you gon-na go?

A thinking this is the life — And you wake up in the morning and your head feels twice the size Where you gon-na go?

T 8 thinking this is the life — And you wake up in the morning and your head feels twice the size Where you gon-na go?

B thinking this is the life — And you wake up in the morning and your head feels twice the size Where you gon-na go?

36

S Where you gon-na go? Where you gon-na sleep to-night? — And you're sing-ing the songs —

A Where you gon-na go? Where you gon-na sleep to-night? — And you're sing-ing the songs —

T 8 Where you gon-na go? Where you gon-na sleep to-night? — And you're sing-ing the songs —

B Where you gon-na go? Where you gon-na sleep to-night? — And you're sing-ing the songs —

51

S

A

T

B

morning and your head feels twice the size Where you gonna go? Where you gonna go? Where you gonna sleep tonight?

53

soprano & mezzo

S

A

T

B

And you're sing-ing the songs— think-ing this is the life— And you wake up in the

— And you're sing-ing the songs— think-ing this is the life— And you wake up in the

55

S

A

T

B

morning and your head feels twice the size Where you gonna go? Where you gonna go? Where you gonna sleep tonight?

morning and your head feels twice the size Where you gonna go? Where you gonna go? Where you gonna sleep tonight?

63

S morning and your head feels twice the size Where you gonna go? Where you gonna go? Where you gon-na sleep to-night?

A morning and your head feels twice the size Where you gonna go? Where you gonna go? Where you gon-na sleep to-night?

T 8 _____ Where you gonna go? Where you gonna go? Where you gon-na sleep to-night?

B morning and your head feels twice the size Where you gonna go? Where you gonna go? Where you gon-na sleep to-night?

65

Slowly *Coda*
a tempo

S _____ *p*

A (optional solo) _____ *p*
Where you gon-na sleep to - night? oo _____

T _____ *p*
Where you gon-na sleep

B _____ *p*
Sleep to - night oo



Bb Instrument

This Is The Life

Words and Music by Amy MacDonald
Arranged by Dirk Kokx
Original Key C# minor

With a drive ♩ = 95

Intro *Verse 1*

Chorus 1 *Interlude 1* *Verse 2* *Chorus 2*

Interlude 2

Chorus 3

Chorus 4 *Slowly*

Coda *a tempo*



Piano Advanced

This Is The Life

Words and Music by Amy MacDonald

Arranged by Dirk Kokx

Original Key C# minor

With a drive ♩ = 95

Intro

E^m

C

G

Verse 1

5 B^m

E^m

C

G

9 B^m

E^m

C

G

Chorus 1

13 B^m

E^m

C

16 G

B^m

E^m

37 **B^m** **E^m** **C**

40 **G** **B^m** **E^m** *Interlude 2*
f if guitar plays solo play only chords

43 **C** **G** **B^m**

46 **E^m** **C** **G** **B^m**

Chorus 3
50 **E^m** **C** **G** **B^m**
mf



Piano Moderated

This Is The Life

Words and Music by Amy MacDonald

Arranged by Dirk Kokx

Original Key C# minor

With a drive ♩ = 95

Intro

Em C G

Verse 1

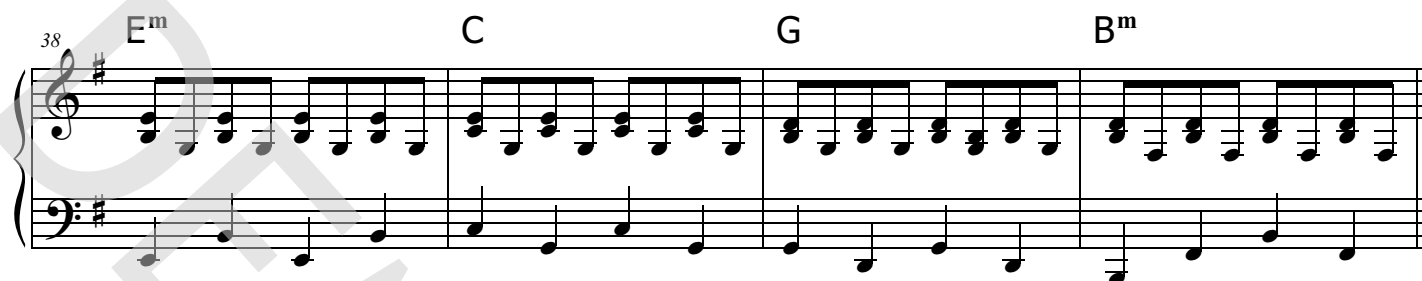
5 B^m E^m C G B^m

10 E^m C G B^m

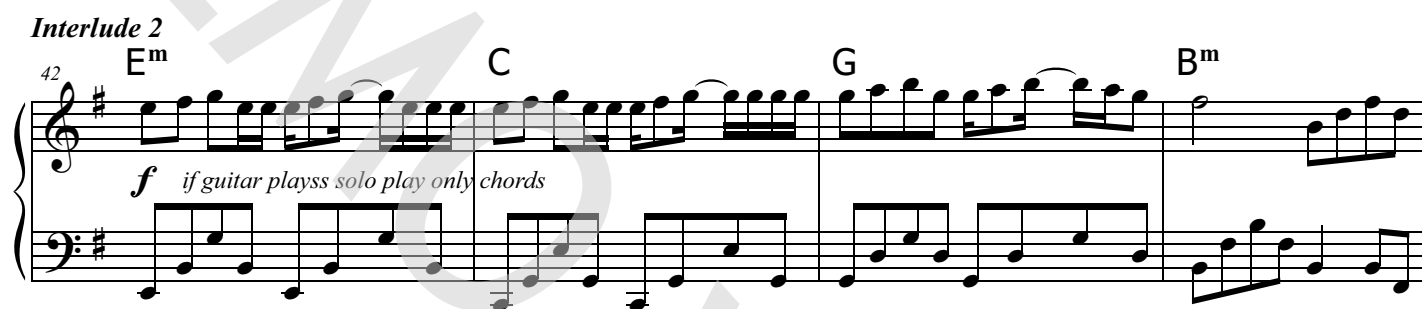
Chorus 1

14 E^m C G B^m

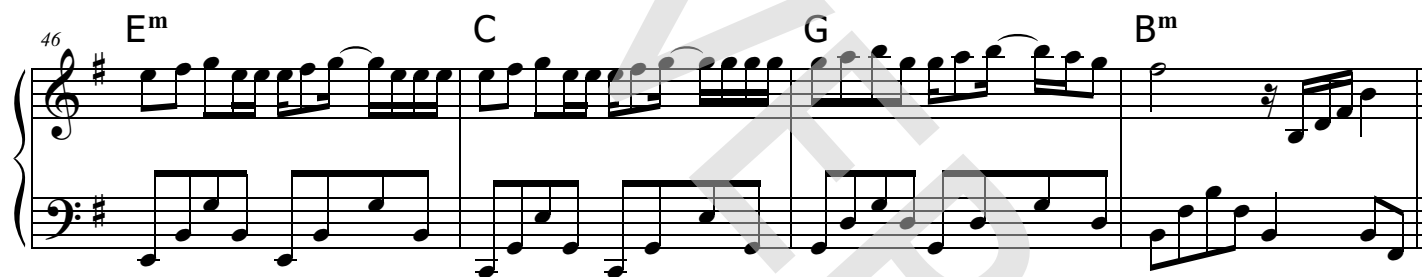
38 E^m C G B^m



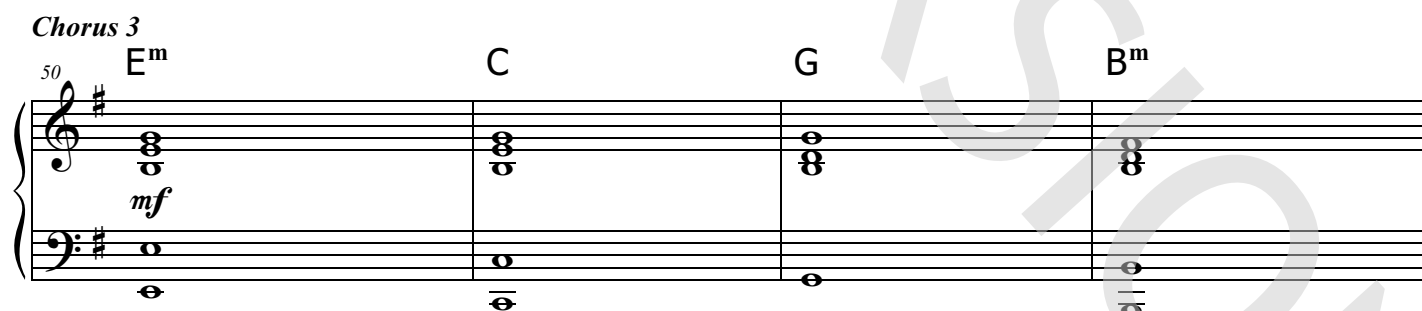
Interlude 2
42 E^m C G B^m
f if guitar plays solo play only chords



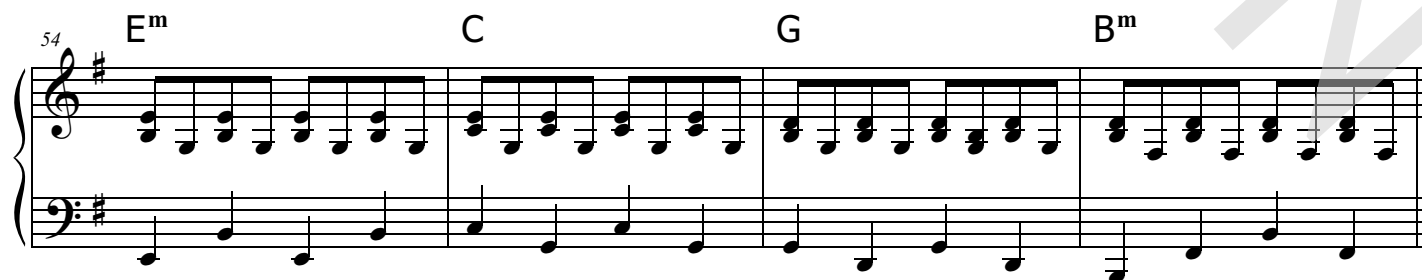
46 E^m C G B^m



Chorus 3
50 E^m C G B^m
mf



54 E^m C G B^m





Synthesizer

This Is The Life

Words and Music by Amy MacDonald
Arranged by Dirk Kokx
Original Key C# minor

With a drive ♩ = 95

Intro *Verse 1* *El. Piano (Rhodes)*

Chorus 1
14

19 *Interlude 1* *Verse 2*
Vibraphone

28 *Harp*



Guitar

This Is The Life

Words and Music by Amy MacDonald
Arranged by Dirk Kokx
Original Key C# minor

With a drive ♩ = 95

dead strokes **Intro** C G B^m

mf *strumming, freely*

Verse 1

E^m C G B^m E^m C G B^m

Chorus 1

E^m C G B^m E^m C G B^m

Interlude 1

E^m C G B^m

Verse 2

E^m C G B^m E^m C G B^m



Bass Guitar

This Is The Life

Words and Music by Amy MacDonald

Arranged by Dirk Kokx

Original Key C# minor

With a drive ♩ = 95

Intro

E^m C G B^m

mf

Verse 1

E^m C G B^m E^m C

Chorus 1

G B^m E^m C G B^m

Interlude 1

E^m C G B^m E^m C

Verse 2

G B^m E^m C G B^m

Chorus 2

E^m C G B^m E^m C

G B^m E^m C G B^m

© www.ChorusOnline.com / 0031 (0) 6 - 41 57 77 56

This Is The Life

Words and Music by Amy MacDonald

Arranged by Dirk Kokx

Original Key C# minor

Hi-Hat Pedal
Hi-Hat opened
Hi-Hat Closed
Snaredrum
Bassdrum
Snare rim (click)
Toms: High 1
High 2
Mid
Low
Ride heavy
Ride light
Ride cup
Claves
Conga High
Conga Low
Cymbal Crash
Cymbal Splash
Triangle Open
Triangle Closed
Quiro
Tambourine
Shakers (Maracas)
Bells

With a drive ♩ = 95

Intro

brushes
mp
hihat (foot)
continuous 16th on snare (ghost notes)

Verse 1

6

Chorus 1

12

Interlude 1

18

This Is The Life

Words and Music by Amy MacDonald
Arranged by Dirk Kokx
Original Key C# minor

Verse 1

6

10

Chorus 1

14

18

Interlude 1

22



Leadsheet

This Is The Life

Words and Music by Amy MacDonald

Arranged by Dirk Kokx

Original Key C# minor

With a drive ♩ = 95

Intro

C#m A E G#m

Verse 1

C#m

Oh the wind whis-tles down___ the

cold dark street to - night___ And the peo - ple they were danc - ing

to the mu-sic vibe___ And the boys___ chase the girls with the curls in their hair___ While the

shy tor-mented youth sit way o-ver there___ and the songs___ they get lou - der each one bet-ter than before

Chorus 1

___ And you're sing-ing the songs think-ing this is the life___ And you wake up in the

morning and your head feels twice the size Where you gonna go? Where you gonna go? Where you gonna sleep to - night?

___ And you're sing-ing the songs___ think-ing this is the life___ And you wake up in the

36 E G#m

Where you gon-na go? Where you gon-na sleep to-night? _____ And you're sing-ing the songs—

38 C#m A

— thinking this is the life— And you wake up in the morning and your head feels twice the size Where you gonna go?

40 E G#m

Where you gon-na go? Where you gon-na sleep to-night? _____ Where you gon-na sleep to-night?

Interlude 2

42 C#m A E G#m

46 C#m A E G#m

And you're sing-ing the songs

Chorus 3

50 C#m A

thinking this is the life— And you wake up in the morning and your head feels twice the size Where you gonna go?

52 E G#m

Where you gon-na go? Where you gon-na sleep to-night? _____ And you're sing-ing the songs—



Leadsheet

This Is The Life

Words and Music by Amy MacDonald

Arranged by Dirk Kokx

Original Key C# minor

With a drive ♩ = 95

Intro

E^m C G B^m

Verse 1

E^m

Oh the wind whis-tles down___ the

cold dark street to - night___ And the peo - ple they were danc - ing

to the mu-sic vibe___ And the boys___ chase the girls with the curls in their hair___ While the

shy tor-men-ted youth sit way o-ver there___ and the songs___ they get lou - der each one bet-ter than before___


Chorus 1

___ And you're sing-ing the songs think-ing this is the life___ And you wake up in the

morning and your head feels twice the size Where you gonna go? Where you gonna go? Where you gonna sleep to - night?


___ And you're sing-ing the songs___ think-ing this is the life___ And you wake up in the

36 **G** **B^m**




Where you gon-na go? Where you gon-na sleep to-night? _____ And you're sing-ing the songs _

38 **E^m** **C**



__ thinking this is the life ____ And you wake up in the morning and your head feels twice the size Where you gon-na go?


40 **G** **B^m**



Where you gon-na go? Where you gon-na sleep to-night? _____ Where you gon-na sleep to-night?


Interlude 2

42 **E^m** **C** **G** **B^m**



Interlude 2 musical notation with chords E^m, C, G, B^m and a triplet.

46 **E^m** **C** **G** **B^m**



Interlude 2 musical notation with chords E^m, C, G, B^m and a triplet.

And you're sing-ing the songs


Chorus 3

50 **E^m** **C**



thinking this is the life ____ And you wake up in the morning and your head feels twice the size Where you gon-na go?

52 **G** **B^m**



Where you gon-na go? Where you gon-na sleep to-night? _____ And you're sing-ing the songs _



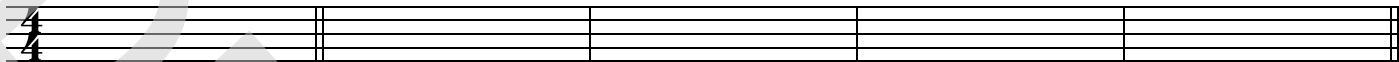
Empty paper

This Is The Life

Words and Music by Amy MacDonald
Arranged by Dirk Kokx
Original Key C# minor

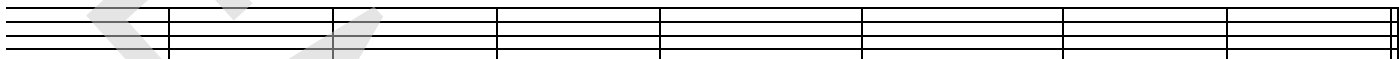
With a drive ♩ = 95

Intro



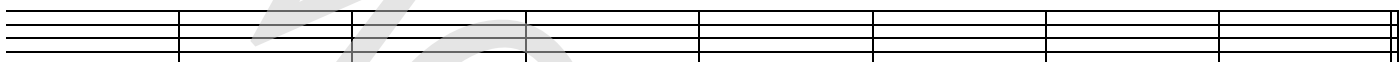
Verse 1

6



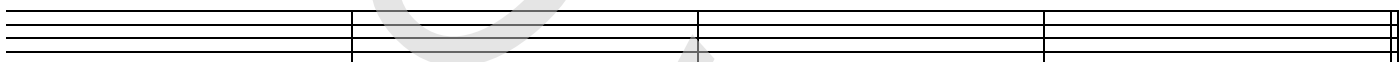
Chorus 1

14



Interlude 1

22



Verse 2

26



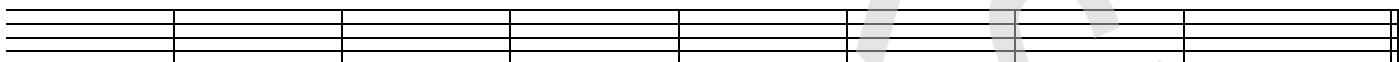
Chorus 2

34



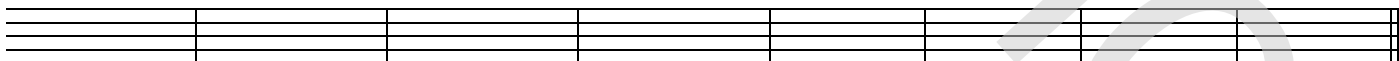
Interlude 2

42



Chorus 3

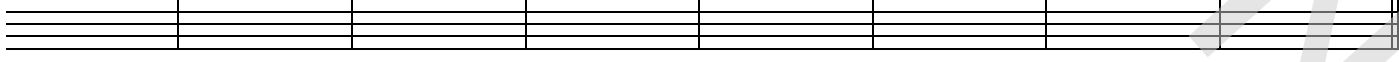
50



Chorus 4

58

Slowly



Coda

a tempo

66

