



Thank you for visiting ChorusOnline

We hope this demo version will be of great help for you

Choral Sheet music - Practice mp3's and Backtrack*

What do we stand for:



Legal arrangements

Artists receive a part of the price (royalties)



Quality

Our team consists of the best choir/vocal group arrangers



Speed

Choose, pay (internet) and download within 2 minutes



Price

Nowhere cheaper

* A professional Backtrack goes only with the choir-combo version



Something Beautiful SSATB

Pag.

02	Full score combo C instrument
11	Full score combo Bb instrument
20	Full score combo Eb instrument
29	Full score combo 4 extra staves
43	Full score small combo
56	Full score small combo 2 extra staves
75	Full score vocals (SSATB) piano advanced
84	Full score vocals (SSATB) piano moderated
92	Vocals (SSATB)
103	C instrument
105	Bb instrument
107	Eb instrument
109	Piano advanced
116	Piano moderated
122	Synthesizer
126	Guitar
129	Bassguitar
132	Drumkit
134	Empty paper
137	Leadsheet (melody, lyrics, chords)

The index numbers above are based on the original (complete) PDF-file

In this smaller DEMO-version, the numbers above do NOT match this file!!



SATB Combo C

Something Beautiful

Words and Music by Robert Williams and Guy Chambers
Arranged by Frank de Vreeze
Original Key

Rockballad ♩ = 88
16 th shuffle feel

Intro **Verse 1**

Soprano

Alto

Tenor

Bass

C Instr.

Piano Adv.

Synthesizer

Guitar

Bass Guitar

Drum Set

You can't ma-nu-fac-ture a mi-ra-cle, the si-lence was pi-ti-ful that day. And love is get-ting too cy-ni-

And love is get-ting too cy-ni-

Continue staccato
Playing lefthand is possible, but we prefer this played by bass only.

B[♭] B[♭] G^m D^m E[♭](6) E[♭]/F B[♭]

©2001 BMG Music Publishing Limited

This arrangement ©2009 BMG Music Publishing Limited (50%) EMI Music Publishing Ltd
Reproduced by permission of International Music Publications Limited (a trading name of Faber Music Limited).

This arrangement ©2009 MusicSales (50%) administered by ChorusOnline. All Rights Reserved.

[Arranged for SATB, SSAA and Chorus-LIGHT]

Something Beautiful 3

SATB Combo C

20

S
ning, 'cause your bed lies va-cant at night. If you're lost hurt, ti-red or lone-ly, can't con-trol it, try as you might.

A
ning, 'cause your bed lies va-cant at night. If you're lost hurt, ti-red or lone-ly, can't con-trol it, try as you might.

T
ning, 'cause your bed lies va-cant at night. If you're lost hurt, ti-red or lone-ly, can't con-trol it, try as you might.

B
ning, 'cause your bed lies va-cant at night. If you're lost hurt, ti-red or lone-ly, can't con-trol it, try as you might.

C

B7/D E7 E7/F B7 F/A E7/G B7/F C/E

P.A.

Synth

Gtr.

Bass

D.S.

20

S
May you find that love that won't leave you, may you find it by the end of the day. You won't be lost hurt,

A
May you find that love that won't leave you, may you find it by the end of the day. You won't be lost hurt,

T
May you find that love that won't leave you, may you find it by the end of the day. You won't be lost hurt,

B
May you find that love that won't leave you, may you find it by the end of the day. You won't be lost hurt,

C

Fsus4 F B7 D Cm E7/B7 A7 B7/F F

P.A.

Synth

Gtr.

Bass

D.S.

Something Beautiful 5

SATB Combo C

44

S no no no ooh

A no no no ooh

T tis-fied but they can't see your soul no no no For-got the time feel-ing pe-tri-fied when they lived a-lone aah

B no no no ooh

C

P.A. E^m/G^6 $B^>$ B^7 E^b C/E B^7/F

Synth *Brass*

Gtr.

Bass

D.S.

50 **Chorus 2**

S If you can't wake up in the mor - ning, 'cause your bed lies va - cant at night. If you're lost hurt, ti - red or lone - ly, can't con -

A If you can't wake up in the mor - ning, 'cause your bed lies va - cant at night. If you're lost hurt, ti - red or lone - ly, can't con -

T If you can't wake up in the mor - ning, 'cause your bed lies va - cant at night. If you're lost hurt, ti - red or lone - ly, can't con -

B If you can't wake up in the mor - ning, 'cause your bed lies va - cant at night. If you're lost hurt, ti - red or lone - ly, can't con -

C

P.A. F $B^>$ B^7/D E^b E^b/F $B^>$ F/A E^b/G B^7/F

Synth *RH switch to strings*

Gtr. *LH switch to Jazz Organ*

Bass

D.S.

Something Beautiful 7

SATB Combo C

68

S It will come your way. It will come your way. It will come your way.

A It will come your way. It will come your way. It will come your way.

T Some-kind of beau-ti-ful. Some-kind of beau-ti-ful.

B It will come your way. It will come your way. It will come your way.

C

P.A. B^b E^b/B^b A^b F D^b G^b/D^b C^b A^b/C D^b

Synth

Gtr.

Bass

D.S. 2

73 Verse 3

S way. no no no ooh

A way. no no no ooh

T All your friends think your sa-tis-fied but they can't see your soul no no no For-got the time feel-ing pe-

B way. no no no ooh

C

P.A. A E E^m/G B B^7 E

Synth Jazz Organ

Gtr. 73

Bass

D.S.

Something Beautiful 9

SATB Combo C

97

S — you, may you find it by the end of ___ the day. ___ You won't be lost hurt, ti-red and lone - ly some-thing beau-ti-ful will come your ___ way.

A — you, may you find it by the end of ___ the day. ___ You won't be lost hurt, ti-red and lone - ly some-thing beau-ti-ful will come your ___ way.

T — you, may you find it by the end of ___ the day. ___ You won't be lost ___ hurt, ti-red and lone - ly some-thing beau-ti-ful will come your ___ way.

B — you, may you find it by the end of ___ the day. ___ You won't be lost ___ hurt, ti-red and lone - ly some-thing beau-ti-ful will come your ___ way.

C

D# C#m E/B A B/F# F# A E G A

P.A

Synth

Gtr.

Bass

D. S.

Rit.

97

S You won't be lost hurt, ti - red and lone - ly some-thing beau - ti - ful will come your ___ way. ___

A You won't be lost hurt, ti - red and lone - ly some-thing beau - ti - ful will come your ___ way. ___

T You won't be lost ___ hurt, ti - red and lone - ly some-thing beau - ti - ful will come your ___ way. ___

B You won't be lost ___ hurt, ti - red and lone - ly some-thing beau - ti - ful will come your ___ way. ___

C

B B/F# F# A E G A B

P.A

Synth

Gtr.

Bass

D. S.

2 Something Beautiful

SATB Combo Bb

8

S

A

T
cal, pas-sion's just phy-si - cal, these days. You a-na-lyse e - vry - one you meet but get no sign, lo - ving

B
cal, pas-sion's just phy-si - cal, these days.

Bb

P.A.
G^m D^m F E^b E^m/G^b B^b

Synth
Brass

Gtr.

Bass

D. S.

14

S

A

T
kind. Ev'-ry night you ad - mit de-feat, and cry your-self blind. If you can't wake up in the mor -

B
Ev'-ry night you ad - mit de-feat, and cry your-self blind. If you can't wake up in the mor -

Bb

P.A.
B^b7 E^b C/E B^b/F F B^b

Synth
Jazz Organ

Gtr.

Bass

D. S.

4 Something Beautiful

SATB Combo Bb

Verse 2

32

S ti-red and lone - ly some-thing beau-ti - ful will come your way. ooh ooh ooh

A ti-red and lone - ly some-thing beau-ti - ful will come your way. ooh ooh ooh

T ti-red and lone - ly some-thing beau-ti - ful will come your way. The D J said on the ra - di - o "Life should be ste-re - o" each day."

B ti-red and lone - ly some-thing beau-ti - ful will come your way. "Life should be ste-re - o"

Bb

P.A. A^b E^b G^b A^b B^b B^b G^m D^m

Synth

Gtr. 32

Bass

D. S.

38

S yeah yeah yeah yeah ooh ooh ooh ooh

A yeah yeah yeah yeah ooh ooh ooh ooh

T And the past that cast the un-suit - a - ble 'stead of some kind of beau-ti - ful you just could-n't wait. All your friends think your sa -

B And the past that cast the un-suit - a - ble 'stead of some kind of beau-ti - ful you just could-n't wait. ooh

Bb

P.A. E^x(6) E^b/F B^b G^m D^m F E^b

Synth

Gtr. 38

Bass

D. S.

6 Something Beautiful

SATB Combo Bb

57

S
trol it, try as you might. _____ May you find that love that won't leave _____ you, may you find it by the end of _____ the day. _____ You won't be

A
trol it, try as you might. _____ May you find that love that won't leave _____ you, may you find it by the end of _____ the day. _____ You won't be

T
trol it, try as you might. _____ May you find that love that won't leave _____ you, may you find it by the end of _____ the day. _____ You won't be

B
trol it, try as you might. _____ May you find that love that won't leave _____ you, may you find it by the end of _____ the day. _____ You won't be

Bb

C/E F^{sus4} F B^b D C^m E^b/B^b A^b

P.A.

Synth

57

Gtr.

Bass

D.S.

63

Bridge

S
lost hurt, ti - red and lone - ly some-thing beau - ti - ful will come your _____ way. It will come your _____ way. _____

A
lost hurt, ti - red and lone - ly some-thing beau - ti - ful will come your _____ way. It will come your _____ way. _____

T
lost _____ hurt, ti - red and lone - ly some-thing beau - ti - ful will come your _____ way. Some - kind of beau - ti - ful _____

B
lost _____ hurt, ti - red and lone - ly some-thing beau - ti - ful will come your _____ way. It will come your _____ way. _____

Bb

B^b/F F A^b E^b G^b A^b B^b E^b/B^b A^b F B^b

P.A.

Synth

Brass

63

Gtr.

Bass

D.S.

8 Something Beautiful

SATB Combo Bb

Chorus 3

79

S If you can't wake up in the mor - ning, 'cause your bed lies va - cant at night.

A If you can't wake up in the mor - ning, 'cause your bed lies va - cant at night.

T - tri - fied when they lived a - lone aah If you can't wake up in the mor - ning, 'cause your bed lies va - cant at night.

B ooh If you can't wake up in the mor - ning, 'cause your bed lies va - cant at night.

Bb

C#/E# B/F# F# B B/D# E E/F#

P.A.

Synth

79 LH switch to Jazz Organ

Gtr.

Bass

D. S.

85

S If you're lost hurt, ti - red or lone - ly, can't con - trol it, try as you might. May you find that love that won't leave...

A If you're lost hurt, ti - red or lone - ly, can't con - trol it, try as you might. May you find that love that won't leave...

T If you're lost hurt, ti - red or lone - ly, can't con - trol it, try as you might. May you find that love that won't leave...

B If you're lost hurt, ti - red or lone - ly, can't con - trol it, try as you might. May you find that love that won't leave...

Bb

B F#/A# E/G# B/F# C#/E# F#sus4 F# B

P.A.

Synth

85

Gtr.

Bass

D. S.



SATB Combo Eb

Something Beautiful

Words and Music by Robert Williams and Guy Chambers
Arranged by Frank de Vreeze
Original Key

Rockballad ♩ = 88
16 th shuffle feel

Intro **Verse 1**

Soprano

Alto

Tenor

Bass

E♭ Instr.

Piano Adv.

Synthesizer

Guitar

Bass Guitar

Drum Set

You can't ma-nu-fac-ture a mi-ra-cle, the si-lence was pi-ti-ful that day. And love is get-ting too cy-ni-

And love is get-ting too cy-ni-

Continue staccato

Playing lefthand is possible, but we prefer this played by bass only.

B[♭] B[♭] G^m D^m E[♭](6) E[♭]/F B[♭]

2

©2001 BMG Music Publishing Limited

This arrangement ©2009 BMG Music Publishing Limited (50%) EMI Music Publishing Ltd

Reproduced by permission of International Music Publications Limited (a trading name of Faber Music Limited).

This arrangement ©2009 MusicSales (50%) administered by ChorusOnline. All Rights Reserved.

[Arranged for SATB, SSAA and Chorus-LIGHT]

Something Beautiful 3

SATB Combo Eb

20

S
- - ning, ___ 'cause your bed lies va - cant at night. If you're lost hurt, ti - red or lone - ly, can't con - trol it, try as you might. ___

A
- - ning, ___ 'cause your bed lies va - cant at night. If you're lost hurt, ti - red or lone - ly, can't con - trol it, try as you might. ___

T
- - ning, ___ 'cause your bed lies va - cant at night. If you're lost ___ hurt, ti - red or lone - ly, can't con - trol it, try as you might. ___

B
- - ning, ___ 'cause your bed lies va - cant at night. If you're lost ___ hurt, ti - red or lone - ly, can't con - trol it, try as you might. ___

Eb

P.A.
B \flat /D E \flat E \flat /F B \flat F/A E \flat /G B \flat /F C/E

Synth

Gtr.

Bass

D. S.

26

S
___ May you find that love that won't leave ___ you, may you find it by the end of ___ the day. ___ You won't be lost hurt,

A
___ May you find that love that won't leave ___ you, may you find it by the end of ___ the day. ___ You won't be lost hurt,

T
___ May you find that love that won't leave ___ you, may you find it by the end of ___ the day. ___ You won't be lost ___ hurt,

B
___ May you find that love that won't leave ___ you, may you find it by the end of ___ the day. ___ You won't be lost ___ hurt,

Eb

P.A.
F $\text{sus}4$ F B \flat D C m E \flat /B \flat A \flat B \flat /F F

Synth

Gtr.

Bass

D. S.

Something Beautiful 5

SATB Combo Eb

44

S no no no ooh

A no no no ooh

T tis-fied but they can't see your soul no no no For-got the time feel-ing pe-tri-fied when they lived a-lone aah

B no no no ooh

E♭

P.A. E^m/G^o B[>] B⁷ E^b C/E B⁷/F

Synth Brass

Gtr.

Bass

D.S.

Chorus 2

50

S If you can't wake up in the mor - ning, 'cause your bed lies va - cant at night. If you're lost hurt, ti - red or lone - ly, can't con-

A If you can't wake up in the mor - ning, 'cause your bed lies va - cant at night. If you're lost hurt, ti - red or lone - ly, can't con-

T If you can't wake up in the mor - ning, 'cause your bed lies va - cant at night. If you're lost hurt, ti - red or lone - ly, can't con-

B If you can't wake up in the mor - ning, 'cause your bed lies va - cant at night. If you're lost hurt, ti - red or lone - ly, can't con-

E♭

P.A. F B[>] B⁷/D E^b E^b/F B[>] F/A E^b/G B⁷/F

Synth RH switch to strings

Gtr. LH switch to Jazz Organ

Bass

D.S.

Something Beautiful 7

SATB Combo Eb

68

S It will come your way. It will come your way. It will come your way.

A It will come your way. It will come your way. It will come your way.

T Some-kind of beau-ti-ful. Some-kind of beau-ti-ful.

B It will come your way. It will come your way. It will come your way.

Eb

P.A. B^b E^b/B^b A^b F D^b G^b/D^b C^b A^b/C D^b

Synth

Gtr.

Bass

D.S.

73

S way. no no no ooh

A way. no no no ooh

T All your friends think your sa-tis-fied but they can't see your soul no no no For-got the time feel-ing pe-

B way. no no no ooh

Eb

P.A. A E E^m/G B B^7/G E

Synth *Jazz Organ*

Gtr.

Bass

D.S.

Something Beautiful 9

SATB Combo Eb

97

S — you, may you find it by the end of ___ the day. ___ You won't be lost hurt, ti-red and lone - ly some-thing beau-ti-ful will come your ___ way.

A — you, may you find it by the end of ___ the day. ___ You won't be lost hurt, ti-red and lone - ly some-thing beau-ti-ful will come your ___ way.

T — you, may you find it by the end of ___ the day. ___ You won't be lost ___ hurt, ti-red and lone - ly some-thing beau-ti-ful will come your ___ way.

B — you, may you find it by the end of ___ the day. ___ You won't be lost ___ hurt, ti-red and lone - ly some-thing beau-ti-ful will come your ___ way.

Eb

D# C#m E/B A B/F# F# A E G A

P.A.

Synth

Gtr.

Bass

D.S.

97

S You won't be lost hurt, ti-red and lone - ly some-thing beau-ti-ful will come your ___ way. ___

A You won't be lost hurt, ti-red and lone - ly some-thing beau-ti-ful will come your ___ way. ___

T You won't be lost ___ hurt, ti-red and lone - ly some-thing beau-ti-ful will come your ___ way. ___

B You won't be lost ___ hurt, ti-red and lone - ly some-thing beau-ti-ful will come your ___ way. ___

Eb

B B/F# F# A E G A B

P.A.

Synth

Gtr.

Bass

D.S.

Rit.

2 Something Beautiful

SATB 4 extra staves

11

S
A
T
B

You a-na-lyse e - vry - one you meet but get no sign, lo - ving kind, Ev-ry night you ad - mit defeat, and cry your-self blind If you

Ev-ry night you ad - mit defeat, and cry your-self blind If you

Ev-ry night you ad - mit defeat, and cry your-self blind If you

1
2
3
4

E_b E_b^m/G_b B_b B_b⁷ E_b C/E B_b/F F

P.A.
Synth
Brass

Gtr.
Bass
D. S.

2 2 2

4 Something Beautiful

SATB 4 extra staves

36

S
 ——— May you find that love that won't leave ——— you, may you find it by the end of ——— the day. ——— You won't be lost hurt, ti - red and lone - ly some-thing

A
 ——— May you find that love that won't leave ——— you, may you find it by the end of ——— the day. ——— You won't be lost hurt, ti - red and lone - ly some-thing

T
 8 ——— May you find that love that won't leave ——— you, may you find it by the end of ——— the day. ——— You won't be lost hurt, ti - red and lone - ly some-thing

B
 ——— May you find that love that won't leave ——— you, may you find it by the end of ——— the day. ——— You won't be lost hurt, ti - red and lone - ly some-thing

1
 2
 3
 4

F^{sus4} F B \flat D C^m E \flat /B \flat A \flat B \flat /F F A \flat E \flat

P.A.
 Synth
 Chtr.
 Bass
 D. S.

6 Something Beautiful

SATB 4 extra staves

40

S ooh ooh ooh ooh

A ooh ooh

T ooh ooh

B - a - ble 'stead of some kind of beau - ti - ful you just could - n't wait. All your friends think your sa - tis - fied but they can't see your soul no no no no

1

2

3

4

G^m D^m F E^b E^m/G^b B^b B^b7

Synth

Chtr.

Bass

D. S.

8 Something Beautiful

SATB 4 extra staves

35

S
lost hurt, ti - red or lone - ly, can't con - trol it, try as you might. _____ May you find that love that won't leave _____ you, may you find it by the end of _____ the day. _____

A
lost hurt, ti - red or lone - ly, can't con - trol it, try as you might. _____ May you find that love that won't leave _____ you, may you find it by the end of _____ the day. _____

T
lost _____ hurt, ti - red or lone - ly, can't con - trol it, try as you might. _____ May you find that love that won't leave _____ you, may you find it by the end of _____ the day. _____

B
lost _____ hurt, ti - red or lone - ly, can't con - trol it, try as you might. _____ May you find that love that won't leave _____ you, may you find it by the end of _____ the day. _____

1
2
3
4

F/A E/G B/F C/E Fsus4 F Bb D Cm E/Bb

Synth

Chr.

Bass

D. S.

10 Something Beautiful

SATB 4 extra staves

69

S
It will come your way. _____
It will come your way. _____

A
It will come your way. _____
It will come your way. _____

T
Some-kind of beau-ti-ful _____
Some-kind of beau-ti-ful _____

B
It will come your way. _____
It will come your way. _____

1
2
3
4

E^b/B^b A^b F D^b G^b/D^b C^b A^b/C D^b A E

Synth

P.A.

Jazz Organ

69

Gtr.

Bass

D. S.

2

1/verse 3

12 Something Beautiful

SATB 4 extra staves

Chorus 3

28

S
cant' wake up in the mor - ning, — 'cause your bed lies va - cant' at night. If you're lost hurt, ti - red or lone - ly, can't con - trol it, try as you might. —

A
cant' wake up in the mor - ning, — 'cause your bed lies va - cant' at night. If you're lost hurt, ti - red or lone - ly, can't con - trol it, try as you might. —

T
cant' wake up in the mor - ning, — 'cause your bed lies va - cant' at night. If you're lost hurt, ti - red or lone - ly, can't con - trol it, try as you might. —

B
cant' wake up in the mor - ning, — 'cause your bed lies va - cant' at night. If you're lost hurt, ti - red or lone - ly, can't con - trol it, try as you might. —

1
2
3
4

P.A.
B B/D# E E/F# B F#/A# E/G# B/F# C#/E#

Synth
8 8 *LH switch to Jazz Organ*

Chr.
28

Bass
28

D. S.
28

14 Something Beautiful

SATB 4 extra staves

Rit.

S
beau - ti - ful will come your way. You won't be lost hurt, ti - red and lone - ly some-thing beau - ti - ful will come your way.

A
beau - ti - ful will come your way. You won't be lost hurt, ti - red and lone - ly some-thing beau - ti - ful will come your way.

T
beau - ti - ful will come your way. You won't be lost hurt, ti - red and lone - ly some-thing beau - ti - ful will come your way.

B
beau - ti - ful will come your way. You won't be lost hurt, ti - red and lone - ly some-thing beau - ti - ful will come your way.

1
2
3
4

G A B B/F# F# A E G A B

P.A.
Synth
Chr.
Bass
D. S.

2 Something Beautiful

SATB small Combo

6

S

A

T

B

And love is get-ting too cy-ni - cal, pas-sion's just phy-si - cal, these days.

E \flat (6) E \flat /F B \flat G m D m F

P.A.

Gr.

Bass

D. S.

11

S

A

T

B

You a - na - lyse e - v'ry - one you meet but get no sign, lo - ving kind.

E \flat E \flat m /G \flat B \flat B \flat 7

P.A.

Gr.

Bass

D. S.

4 Something Beautiful

SATB small Combo

24

S ti - red or lone - ly, can't con - trol it, try as you might. May you find that love that won't leave -

A ti - red or lone - ly, can't con - trol it, try as you might. May you find that love that won't leave -

T ti - red or lone - ly, can't con - trol it, try as you might. May you find that love that won't leave -

B ti - red or lone - ly, can't con - trol it, try as you might. May you find that love that won't leave -

E♭/G B♭/F C/E F♯sus4 F B♭

24

S — you, may you find it by the end of the day. You won't be lost hurt,

A — you, may you find it by the end of the day. You won't be lost hurt,

T — you, may you find it by the end of the day. You won't be lost hurt,

B — you, may you find it by the end of the day. You won't be lost hurt,

D C♯m E♭/B♭ A♭ B♭/F F

28

6 Something Beautiful

SATB small Combo

40

S ooh ooh ooh

A ooh ooh ooh

T - a - ble 'stead of some kind of beau - ti - ful you just could - n't wait. All your friends think your sa -

B - a - ble 'stead of some kind of beau - ti - ful you just could - n't wait. ooh

P.A. G^m D^m F E^b

Gr. 40

Bass

D. S. 2 2

44

S no no no ooh

A no no no ooh

T - tis - fied but they can't see your soul no no no For - got the time feel - ing pe -

B no no no ooh

P.A. E^b^m/G^b B^b B^b7 E^b

Gr. 44

Bass

D. S. 2 2

8 Something Beautiful

SATB small Combo

56

S ti - red or lone - ly, can't con - trol it, try as you might. _____ May you find that love that won't leave _

A ti - red or lone - ly, can't con - trol it, try as you might. _____ May you find that love that won't leave _

T ti - red or lone - ly, can't con - trol it, try as you might. _____ May you find that love that won't leave _

B ti - red or lone - ly, can't con - trol it, try as you might. _____ May you find that love that won't leave _

E \flat /G B \flat /F C/E F^{sus}4 F B \flat

60

S _ you, may you find it by the end of _ the day. _____ You won't be lost hurt,

A _ you, may you find it by the end of _ the day. _____ You won't be lost hurt,

T _ you, may you find it by the end of _ the day. _____ You won't be lost _ hurt,

B _ you, may you find it by the end of _ the day. _____ You won't be lost _ hurt,

D C^m E \flat /B \flat A \flat B \flat /F F

10 Something Beautiful

SATB small Combo

71

S
It will come your _____ way. _____

A
It will come your _____ way. _____

T
Some - kind of beau - ti - ful. _____

B
It will come your _____ way. _____

P.A.
G^b/D^b C^b A^b/C D^b A

Gr.
71

Bass

D. S.

Verse 3

74

S
no _____ no _____ no _____

A
no _____ no _____ no _____

T
All your friends think your sa - tis - fied but they can't see your soul _____ no _____ no _____

B
no _____ no _____ no _____

P.A.
E E^m/G B B⁷

Gr.
74

Bass

D. S.

12 Something Beautiful

SATB small Combo

86

S
lost hurt, ti - red or lone - ly, can't con - trol it, try as you might. _____ May you

A
lost hurt, ti - red or lone - ly, can't con - trol it, try as you might. _____ May you

T
lost hurt, ti - red or lone - ly, can't con - trol it, try as you might. _____ May you

B
lost hurt, ti - red or lone - ly, can't con - trol it, try as you might. _____ May you

P.A.
F#/A# E/G# B/F# C#/E# F#sus4 F#

86

Gr.

Bass

D. S.

90

S
find that love that won't leave _____ you, may you find it by the end of _____ the day. _____ You won't be

A
find that love that won't leave _____ you, may you find it by the end of _____ the day. _____ You won't be

T
find that love that won't leave _____ you, may you find it by the end of _____ the day. _____ You won't be

B
find that love that won't leave _____ you, may you find it by the end of _____ the day. _____ You won't be

P.A.
B D# C#m E/B A

90

Gr.

Bass

D. S.

SATB small Combo extra staves

Something Beautiful

Words and Music by Robert Williams and Guy Chambers
Arranged by Frank de Vreeze
Original Key

Rockballad ♩ = 88
16th shuffle feel

Intro

Verse 1

Soprano

Alto

Tenor

Bass

Guitar

Bass Guitar

Drum Set

Piano Adv.

Continue staccato

Playing left hand is possible, but we prefer this played by bass only.

1

2

B \flat

B \flat

G \flat

D \flat

E \flat (6)

E \flat /F

B \flat

G \flat

You can't ma-nu-fac-ture a mi - ra - cle, the sil - ence was pi - ti - ful that ____ day ____

And love is get - ting too cy - ni - cal, pas - sion's just phy - si -

And love is get - ting too cy - ni - cal, pas - sion's just phy - si -

Something Beautiful 3
SATB small Combo extra staves

Chorus 1

15

S
A
T
B

Ev'ry night you ad - mit de - feat, and cry your-self blind
If you can't wake up in the mor - ning, 'cause your

Ev'ry night you ad - mit de - feat, and cry your-self blind
If you can't wake up in the mor - ning, 'cause your

Ev'ry night you ad - mit de - feat, and cry your-self blind
If you can't wake up in the mor - ning, 'cause your

1
2

E \flat C/E B \flat /F F B \flat B \flat /D

P.A.
Gtr.
Bass
D. S.

15

2

27

S find that love that won't leave you, may you find it by the end of the day. You won't be lost hurt, tired and lone - ly something

A find that love that won't leave you, may you find it by the end of the day. You won't be lost hurt, tired and lone - ly something

T find that love that won't leave you, may you find it by the end of the day. You won't be lost hurt, tired and lone - ly something

B find that love that won't leave you, may you find it by the end of the day. You won't be lost hurt, tired and lone - ly something

1

2

B \flat D C m E \flat /B \flat A \flat B \flat /F F A \flat E \flat

P.A.

Gtr.

Bass

D. S.

39

S ooh ooh ooh

A ooh ooh ooh

T ooh ooh ooh

B past that cast the un - suit - a - ble 'stead of some kind of beau - ti - ful you just could - n't wait. ooh

1

2

P.A. B \flat G \flat m D \flat m F E \flat

Gtr. 39

Bass 2

D. S. 2

All your friends think your sa -

Chorus 2

50

S If you can't wake up in the mor - ning, ___ 'cause your bed lies va - cant at night. If you're lost hurt,

A If you can't wake up in the mor - ning, ___ 'cause your bed lies va - cant at night. If you're lost hurt,

T If you can't wake up in the mor - ning, ___ 'cause your bed lies va - cant at night. If you're lost hurt,

B If you can't wake up in the mor - ning, ___ 'cause your bed lies va - cant at night. If you're lost hurt,

1

2

P.A. F B \flat B \flat /D E \flat E \flat /F B \flat F/A

Gtr. 50

Bass

D. S.

61

S find it by the end of the day. You won't be lost hurt, ti - red and lone - ly some-thing beau - ti - ful will come your way.

A find it by the end of the day. You won't be lost hurt, ti - red and lone - ly some-thing beau - ti - ful will come your way.

T find it by the end of the day. You won't be lost hurt, ti - red and lone - ly some-thing beau - ti - ful will come your way.

B find it by the end of the day. You won't be lost hurt, ti - red and lone - ly some-thing beau - ti - ful will come your way.

1

2

Cm Eb/Bb Ab Bb/F F Ab Eb Gb Ab

Gtr. 61

Bass 61

D. S.

Rit.

S ⁹⁰
ti - red and lone - - - ly some - thing beau - ti - ful will come your - - - way - - -

A
ti - red and lone - - - ly some - thing beau - ti - ful will come your - - - way - - -

T ⁸
ti - red and lone - - - ly some - thing beau - ti - ful will come your - - - way - - -

B
ti - red and lone - - - ly some - thing beau - ti - ful will come your - - - way - - -

1
2
A E G A B

P.A.
⁹⁰
A E G A B

Gtr.
⁹⁰

Bass

D. S.

2 Something Beautiful

SATB Piano advanced

11

S

A

T

B

P.A.

You a-na-lyse e - v'ry - one _____ you meet but get no _____ sign, _____ lo - ving _____ kind. _____ Ev'-ry night you ad - mit _____

Ev'-ry night you ad - mit _____

E^b E^m/G^b B^b B^b7 E^b

16

S

A

T

B

P.A.

Chorus 1

If you can't wake up in the mor - ning, _____ 'cause your

If you can't wake up in the mor - ning, _____ 'cause your

_____ de-feat, and cry your-self blind _____ If you can't wake up in the mor - ning, _____ 'cause your

_____ de-feat, and cry your-self blind _____ If you can't wake up in the mor - ning, _____ 'cause your

C/E B^b/F F B^b B^b/D

21

S

A

T

B

P.A.

bed lies va - cant at night. If you're lost hurt, ti - red or lone - ly, can't con - trol it, try as you might. _____

bed lies va - cant at night. If you're lost hurt, ti - red or lone - ly, can't con - trol it, try as you might. _____

bed lies va - cant at night. If you're lost _____ hurt, ti - red or lone - ly, can't con - trol it, try as you might. _____

bed lies va - cant at night. If you're lost _____ hurt, ti - red or lone - ly, can't con - trol it, try as you might. _____

E^b E^b/F B^b F/A E^b/G B^b/F C/E

4 Something Beautiful

SATB Piano advanced

40

S
ooh ooh ooh

A
ooh ooh ooh

T
- a - ble 'stead of some kind of beau - ti - ful you just could - n't wait. All your friends think your sa -

B
- a - ble 'stead of some kind of beau - ti - ful you just could - n't wait. ooh

P.A
G^m D^m F E^b

44

S
no no no ooh

A
no no no ooh

T
- tis - fied but they can't see your soul no no no For - got the time feel - ing pe -

B
no no no ooh

P.A
E^m/G^b B^b B^b7 E^b

48

S
If you can't wake up in the mor -

A
If you can't wake up in the mor -

T
- tri - fied when they lived a - lone aah If you can't wake up in the mor -

B
If you can't wake up in the mor -

P.A
C/E B^b/F F B^b

Chorus 2

6 Something Beautiful

SATB Piano advanced

Bridge

64

S ti-red and lone - ly some-thing beau-ti-ful will come your ___ way. It will come your ___ way. ___

A ti-red and lone - ly some-thing beau-ti-ful will come your ___ way. It will come your ___ way. ___

T ti-red and lone - ly some-thing beau-ti-ful will come your ___ way. Some-kind of beau - ti-ful ___

B ti-red and lone - ly some-thing beau-ti-ful will come your ___ way. It will come your ___ way. ___

P.A. A^b E^b G^b A^b B^b E^b/B^b A^b F B^b

68

S It will come your ___ way. ___ It will come your ___ way. ___

A It will come your ___ way. ___ It will come your ___ way. ___

T Some-kind of beau-ti - ful ___ Some-kind of beau - ti - ful. ___

B It will come your ___ way. ___ It will come your ___ way. ___

P.A. B^b E^b/B^b A^b F D^b G^b/D^b C^b A^b/C D^b

Verse 3

72

S It will come your ___ way. ___

A It will come your ___ way. ___

T All your friends think your sa - tis-fied but they can't see your soul ___

B It will come your ___ way. ___

P.A. A E E^m/G

8 Something Beautiful

SATB Piano advanced

88

S
A
T
B

trol it, try as you might. _____ May you find that love that won't leave_

C#/E# F#sus4 F# B

P.A.

91

S
A
T
B

— you, may you find it by the end of ___ the day. _____ You won't be lost hurt,

D# C#m E/B A B/F# F#

P.A.

95

S
A
T
B

ti - red and lone - ly some-thing beau - ti - ful will come your ___ way. You won't be lost hurt,

A E G A B B/F# F#

P.A.

SATB Piano moderated

Something Beautiful

Words and Music by Robert Williams and Guy Chambers
Arranged by Frank de Vreeze
Original Key



Rockballad ♩ = 88
16 th shuffle feel

Intro

Verse 1

Soprano

Alto

Tenor

Bass

Piano Mod.

You can't ma-nu-fac-ture a mi - ra-cle, the si-lence was pi-ti - ful that ___ day. ___

B^b Play 8 va Continue staccato

Playing lefthand is possible, but we prefer this played by bass only.

B^b G^m D^m

S

A

T

B

P. M

And love is get-ting too cy-ni - cal, pas-sion's just phy-si - cal, ___ these ___ days. ___

And love is get-ting too cy-ni - cal, pas-sion's just phy-si - cal, ___ these ___ days. ___

E^b(6) E^b/F B^b G^m D^m F

©2001 BMG Music Publishing Limited

This arrangement ©2009 BMG Music Publishing Limited (50%) EMI Music Publishing Ltd
Reproduced by permission of International Music Publications Limited (a trading name of Faber Music Limited).

This arrangement ©2009 MusicSales (50%) administered by ChorusOnline. All Rights Reserved.

[Arranged for SATB, SSAA and Chorus-LIGHT]

Something Beautiful 3
SATB Piano moderated

26

S
A
T
B

May you find that love that won't leave you, may you find it by the end of the day.

P. M

F^{sus4} F B^b D C^m E^b/B^b

30

S
A
T
B

You won't be lost hurt, ti-red and lone - ly some-thing beau-ti-ful will come your way.

The

P. M

A^b B^b/F F A^b E^b G^b A^b B^b

Verse 2

35

S
A
T
B

ooh ooh ooh yeah yeah yeah yeah ooh

ooh ooh ooh yeah yeah yeah yeah ooh

D J said on the ra - di - o "Life should be ste-re - o" each day." And the past that cast the un-suit -

"Life should be ste-re - o" And the past that cast the un-suit -

P. M

B^b G^m D^m E^b(6) E^b/F B^b

Something Beautiful 5
SATB Piano moderated

53

S bed lies va - cant at night. If you're lost hurt, ti - red or lone - ly, can't con - trol it, try as you might. —

A bed lies va - cant at night. If you're lost hurt, ti - red or lone - ly, can't con - trol it, try as you might. —

T bed lies va - cant at night. If you're lost hurt, ti - red or lone - ly, can't con - trol it, try as you might. —

B bed lies va - cant at night. If you're lost hurt, ti - red or lone - ly, can't con - trol it, try as you might. —

P. M. E^b E^b/F B^b F/A E^b/G B^b/F C/E

58

S — May you find that love that won't leave you, may you find it by the end of the day. —

A — May you find that love that won't leave you, may you find it by the end of the day. —

T — May you find that love that won't leave you, may you find it by the end of the day. —

B — May you find that love that won't leave you, may you find it by the end of the day. —

P. M. F^{sus4} F B^b D C^m E^b/B^b

62

S — You won't be lost hurt, ti - red and lone - ly some - thing beau - ti - ful will come your way. —

A — You won't be lost hurt, ti - red and lone - ly some - thing beau - ti - ful will come your way. —

T — You won't be lost hurt, ti - red and lone - ly some - thing beau - ti - ful will come your way. —

B — You won't be lost hurt, ti - red and lone - ly some - thing beau - ti - ful will come your way. —

P. M. A^b B^b/F F A^b E^b G^b A^b

Something Beautiful 7
SATB Piano moderated

78

S ooh _____ If you

A ooh _____ If you

T For - got the time feel - ing pe - tri - fied when they lived a - lone _____ aah _____ If you

B ooh _____ ooh _____ If you

P. M. E C#/E# B/F# F#

Chorus 3

82

S can't wake up in the mor - ning, _____ 'cause your bed lies va - cant at night. If you're lost hurt,

A can't wake up in the mor - ning, _____ 'cause your bed lies va - cant at night. If you're lost hurt,

T can't wake up in the mor - ning, _____ 'cause your bed lies va - cant at night. If you're lost _____ hurt,

B can't wake up in the mor - ning, _____ 'cause your bed lies va - cant at night. If you're lost _____ hurt,

P. M. B B/D# E E/F# B F#/A#

87

S ti - red or lone - ly, can't con - trol it, try as you might. _____ May you find that love that won't leave _____

A ti - red or lone - ly, can't con - trol it, try as you might. _____ May you find that love that won't leave _____

T ti - red or lone - ly, can't con - trol it, try as you might. _____ May you find that love that won't leave _____

B ti - red or lone - ly, can't con - trol it, try as you might. _____ May you find that love that won't leave _____

P. M. E/G# B/F# C#/E# F#sus4 F# B



SATB

Something Beautiful

Words and Music by Robert Williams and Guy Chambers

Arranged by Frank de Vreeze

Original Key

Intro

Verse 1

Tenor

You can't ma-nu-fac-ture a mi-ra-cle, the si-lence was pi-ti-

T

ful that day. And love is get-ting too cy-ni-

B

And love is get-ting too cy-ni-

T

cal, pas-sion's just phy-si-cal, these days.

B

cal, pas-sion's just phy-si-cal, these days.

T

You a-na-lyse e-v'ry - one you meet but get no sign, lo-ving

T

kind. Ev'-ry night you ad-mit de-feat, and cry your-self blind

B

Ev'-ry night you ad-mit de-feat, and cry your-self blind

©2001 BMG Music Publishing Limited

This arrangement ©2009 BMG Music Publishing Limited (50%) EMI Music Publishing Ltd

Reproduced by permission of International Music Publications Limited (a trading name of Faber Music Limited).

This arrangement ©2009 MusicSales (50%) administered by ChorusOnline. All Rights Reserved.

[Arranged for SATB, SSAA and Chorus-LIGHT]

Something Beautiful 3
SATB

28

S
— you, may you find it by the end of ___ the day. ___ You won't be

A
— you, may you find it by the end of ___ the day. ___ You won't be

T
8
— you, may you find it by the end of ___ the day. ___ You won't be

B
— you, may you find it by the end of ___ the day. ___ You won't be

31

S
lost hurt, ti-red and lone - ly some-thing beau-ti-ful will come your ___ way. ___

A
lost hurt, ti-red and lone - ly some-thing beau-ti-ful will come your ___ way. ___

T
8
lost ___ hurt, ti-red and lone - ly some-thing beau-ti-ful will come your ___ way. ___

B
lost ___ hurt, ti-red and lone - ly some-thing beau-ti-ful will come your ___ way. ___

Verse 2

34

S
— ooh ooh

A
— ooh ooh

T
8
— The D J said on the ra - di - o "Life should be ste-re-

B
— "Life should be ste-re-

45

S
no no no ooh

A
no no no ooh

T
8
no no no For - got the time feel - ing pe -

B
no no no ooh

48

S
If you

A
If you

T
8
- tri - fied when they lived a - lone aah If you

B
If you

Chorus 2

51

S
can't wake up in the mor - ning, 'cause your bed lies va - cant at night.

A
can't wake up in the mor - ning, 'cause your bed lies va - cant at night.

T
8
can't wake up in the mor - ning, 'cause your bed lies va - cant at night.

B
can't wake up in the mor - ning, 'cause your bed lies va - cant at night.

Something Beautiful 7
SATB

63

S
lost hurt, ti-red and lone - ly some-thing beau-ti-ful will come your ___ way.

A
lost hurt, ti-red and lone - ly some-thing beau-ti-ful will come your ___ way.

T
8
lost ___ hurt, ti-red and lone - ly some-thing beau-ti-ful will come your ___ way.

B
lost ___ hurt, ti-red and lone - ly some-thing beau-ti-ful will come your ___ way.

Bridge

66

S
It will come your ___ way. ___

A
It will come your ___ way. ___

T
8
Some - kind of beau - ti - ful ___

B
It will come your ___ way. ___

68

S
It will come your ___ way. ___

A
It will come your ___ way. ___

T
8
Some - kind of beau - ti - ful ___

B
It will come your ___ way. ___

78

S
ooh _____

A
ooh _____

T
8
For-got the time feel-ing pe - tri-fied when they lived a - lone _____ aah _____

B
ooh ooh

Chorus 3

81

S
If you can't wake up in the mor - ning, _____ 'cause your

A
If you can't wake up in the mor - ning, _____ 'cause your

T
8
_____ If you can't wake up in the mor - ning, _____ 'cause your

B
If you can't wake up in the mor - ning, _____ 'cause your

84

S
bed lies va - cant at night. If you're lost hurt,

A
bed lies va - cant at night. If you're lost hurt,

T
8
bed lies va - cant at night. If you're lost _____ hurt,

B
bed lies va - cant at night. If you're lost _____ hurt,

Something Beautiful 11
SATB

95

S
ti - red and lone - ly some - thing beau - ti - ful will come your ____ way. You won't be

A
ti - red and lone - ly some - thing beau - ti - ful will come your ____ way. You won't be

T
8
ti - red and lone - ly some - thing beau - ti - ful will come your ____ way. You won't be

B
ti - red and lone - ly some - thing beau - ti - ful will come your ____ way. You won't be

98

S
lost hurt, ti - red and lone - - ly some - thing

A
lost hurt, ti - red and lone - - ly some - thing

T
8
lost ____ hurt, ti - red and lone - - ly some - thing

B
lost ____ hurt, ti - red and lone - - ly some - thing

Rit.
100

S
beau - ti - ful will come your ____ way. ____

A
beau - ti - ful will come your ____ way. ____

T
8
beau - ti - ful will come your ____ way. ____

B
beau - ti - ful will come your ____ way. ____

2 Something Beautiful

C Instrument

68



73

Verse 3



81

Chorus 3



86



93



99

Rit.



2 Something Beautiful

Bb Instrument

Verse 3

71

Chorus 3

79

85

92

Rit.

98

2 Something Beautiful

E♭ Instrument

69

Verse 3

74

Chorus 3

81

87

94

Rit.

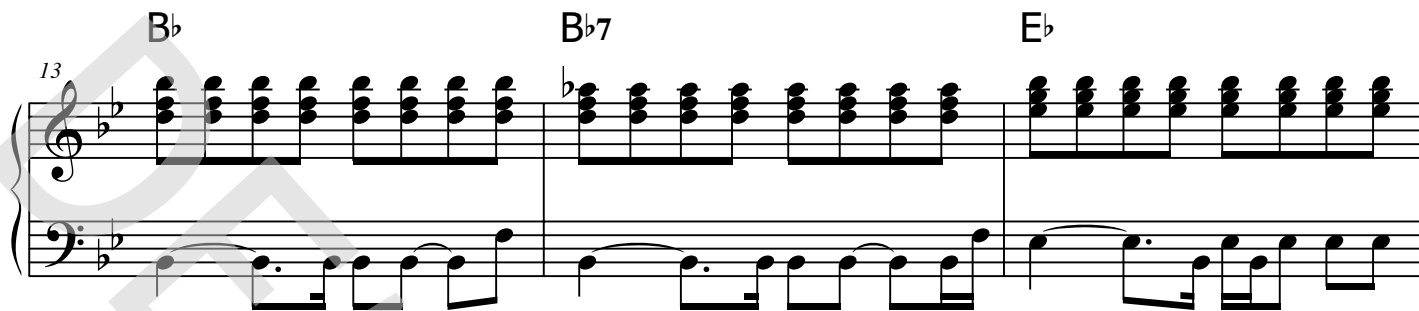
100

2 Something Beautiful

Piano Advanced

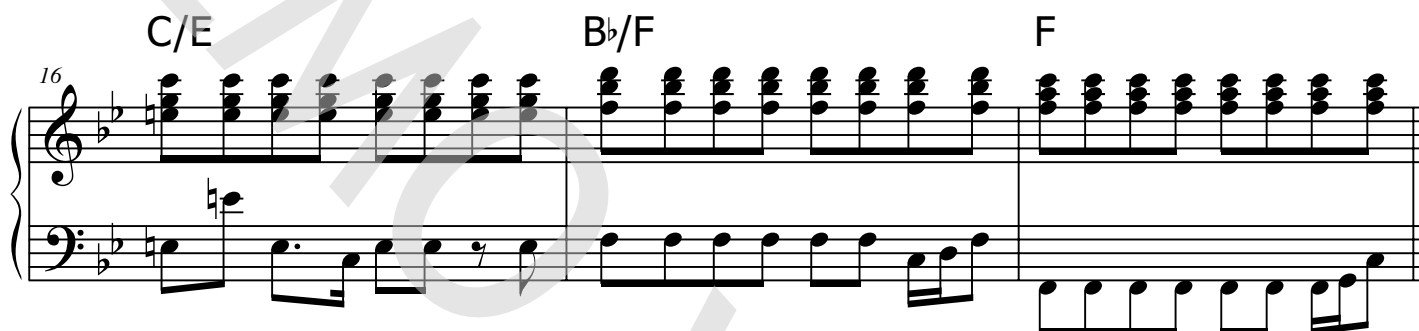
13

B \flat B \flat 7 E \flat



16

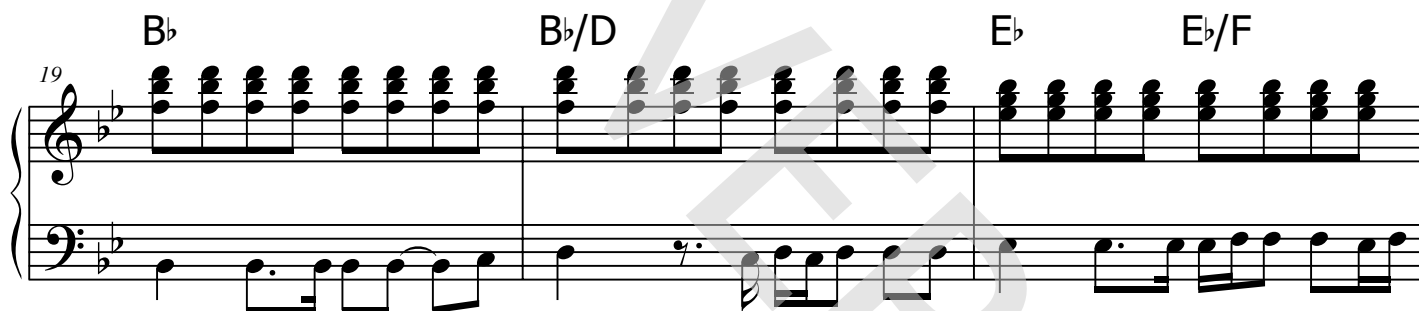
C/E B \flat /F F



Chorus 1

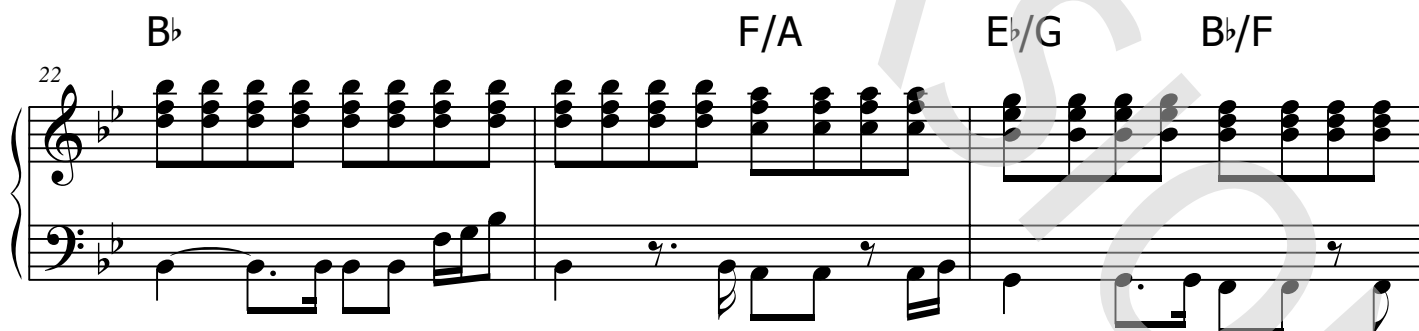
19

B \flat B \flat /D E \flat E \flat /F



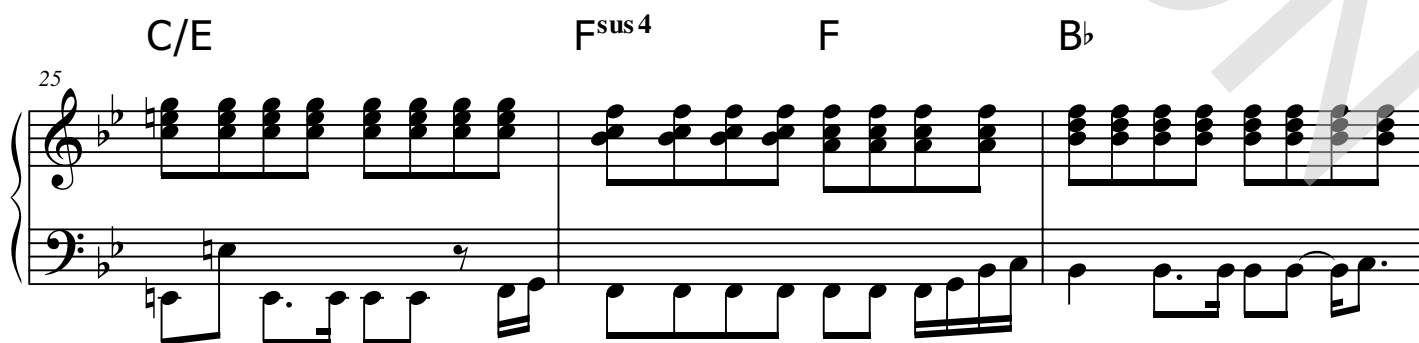
22

B \flat F/A E \flat /G B \flat /F



25

C/E F^{sus}4 F B \flat



4 Something Beautiful

Piano Advanced

44 E_b^m/G_b B_b B_b7

47 E_b C/E B_b/F

Chorus 2

50 F B_b B_b/D

53 E_b E_b/F B_b F/A

56 E_b/G B_b/F C/E F^{sus4} F



Piano Moderated

Something Beautiful

Words and Music by Robert Williams and Guy Chambers
Arranged by Frank de Vreeze
Original Key

Popballad ♩ = 88

Playing lefthand is possible, but we prefer this played by bass only.

Intro

B^b Play 8 va

Continue staccato

Verse 1

B^b

G^m

D^m

E^b(6)

E^b/F

B^b

G^m

D^m

F

E^b

E^b/G^b

B^b

B^b7

E^b

C/E

© www.ChorusOnline.com / 0031 (0) 6 - 41 57 77 56

©2001 BMG Music Publishing Limited

This arrangement ©2009 BMG Music Publishing Limited (50%) EMI Music Publishing Ltd

Reproduced by permission of International Music Publications Limited (a trading name of Faber Music Limited).

This arrangement ©2009 MusicSales (50%) administered by ChorusOnline. All Rights Reserved.

[Arranged for SATB, SSAA and Chorus-LIGHT]

Verse 2

34 $B\flat$ $B\flat$ G^m D^m

38 $E\flat(6)$ $E\flat/F$ $B\flat$ G^m D^m

42 F $E\flat$ $E\flat^m/G\flat$ $B\flat$

46 $B\flat 7$ $E\flat$ C/E $B\flat/F$

Chorus 2

50 F $B\flat$ $B\flat/D$ $E\flat$ $E\flat/F$

Something Beautiful 5
Piano Moderated

71 G^b/D^b C^b A^b/C D^b A

Verse 3

74 E E^m/G B B^7

78 E $C^{\#}/E^{\#}$ $B/F^{\#}$ $F^{\#}$

Chorus 3

82 B $B/D^{\#}$ E $E/F^{\#}$ B

86 $F^{\#}/A^{\#}$ $E/G^{\#}$ $B/F^{\#}$ $C^{\#}/E^{\#}$



Synthesizer

Something Beautiful

Words and Music by Robert Williams and Guy Chambers

Arranged by Frank de Vreeze

Original Key

Intro

Verse 1

Brass

Chorus 1

Jazz Organ

© www.ChorusOnline.com / 0031 (0) 6 - 41 57 77 56

©2001 BMG Music Publishing Limited

This arrangement ©2009 BMG Music Publishing Limited (50%) EMI Music Publishing Ltd

Reproduced by permission of International Music Publications Limited (a trading name of Faber Music Limited).

This arrangement ©2009 MusicSales (50%) administered by ChorusOnline. All Rights Reserved.

[Arranged for SATB, SSAA and Chorus-LIGHT]

Bridge

66

Brass

70

Verse 3

74

Jazz Organ

Chorus 3

81

87

Something Beautiful

Words and Music by Robert Williams and Guy Chambers

Arranged by Frank de Vreeze

Original Key

Popballad ♩ = 88

Intro

Verse 1

E \flat



E \flat ^m/G \flat



B \flat



B \flat 7



Musical staff for the Intro and Verse 1. The Intro consists of two measures of a whole note chord. Verse 1 begins at measure 8 with a whole note chord.

Chorus 1

E \flat



C/E



B \flat /F



F



B \flat



B \flat /D



Musical staff for Chorus 1, measures 15-20. Measure 15 is a whole note chord. Measures 16-20 contain a melodic line.

E \flat



B \flat



B \flat



F/A



E \flat /G



B \flat /F



C/E



Musical staff for Chorus 1, measures 21-25. Measure 21 is a whole note chord. Measures 22-25 contain a melodic line.

F^{sus}4



F



B \flat



D



C^m



E \flat /B \flat



A \flat



Musical staff for Chorus 1, measures 26-30. Measure 26 is a whole note chord. Measures 27-30 contain a melodic line.

B \flat /F



F



A \flat



E \flat



G \flat



A \flat



B \flat



Verse 2

B \flat



Musical staff for Verse 2, measures 31-35. Measure 31 is a whole note chord. Measures 32-35 contain a melodic line.

69

E^b/B^b 3fr. A^b 4fr. F 5fr. D^b 4fr.

71

G^b/D^b C^b A^b/C D^b A 5fr.

Verse 3

74

E 7fr. E^m/G 8fr. B 7fr. B7 7fr. E 7fr. C[#]/E[#] 6fr. B/F[#] F[#] 6fr.

Chorus 3

82

B 7fr. B/D[#] 6fr. E 7fr. E/F[#] 7fr. B 7fr. B 7fr. F[#]/A[#] 4fr.

87

E/G[#] B/F[#] C[#]/E[#] F[#]sus 4 6fr. F[#] 6fr. B 7fr.

92

C^{#m} 4fr. E/B 4fr. A 5fr. B/F[#] F[#] 6fr. A 5fr. E 7fr. G A 5fr.

97

B 7fr. B 7fr. F[#] 6fr. A 5fr. E 7fr. G A 5fr. B 7fr.

Rit.

2 Something Beautiful

Bass Guitar

Verse 2

34

B \flat B \flat G m D m



38

E \flat (6) E \flat /F B \flat G m D m



42

F E \flat E \flat^m /G \flat B \flat



46

B \flat 7 E \flat C/E B \flat /F



Chorus 2

50

F B \flat B \flat /D E \flat E \flat /F



54

B \flat F/A E \flat /G B \flat /F C/E



58

F $^{\text{sus}4}$ F B \flat D C m E \flat /B \flat



62

A \flat B \flat /F F A \flat E \flat G \flat A \flat



Bridge

66

B \flat E \flat /B \flat A \flat F B \flat B \flat E \flat /B \flat A \flat F D \flat



70

G \flat /D \flat C \flat A \flat /C D \flat



Something Beautiful

Words and Music by Robert Williams and Guy Chambers

Arranged by Frank de Vreeze

Original Key

Hi-Hat Pedal
 Hi-Hat opened
 Hi-Hat Closed

Snaredrum
 Bassdrum
 Snare rim (click)

Toms: High 1
 High 2
 Mid
 Low

Ride heavy
 Ride light
 Ride cup

Cymbal Crash
 Cymbal Splash

Triangle Open
 Triangle Closed

Claves
 Conga High
 Conga Low

Quiro
 Tambourine

Shakers (Maracas)
 Bells

Popballad ♩ = 88

Intro

Verse 1

7 2 2 2 2

17

23

28

©2001 BMG Music Publishing Limited

This arrangement ©2009 BMG Music Publishing Limited (50%) EMI Music Publishing Ltd

Reproduced by permission of International Music Publications Limited (a trading name of Faber Music Limited).

This arrangement ©2009 MusicSales (50%) administered by ChorusOnline. All Rights Reserved.

[Arranged for SATB, SSAA and Chorus-LIGHT]



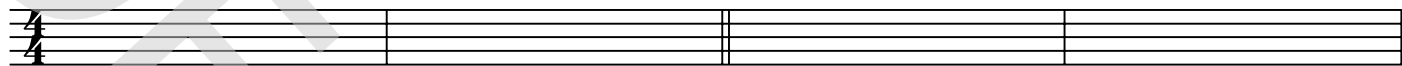
Empty paper

Something Beautiful

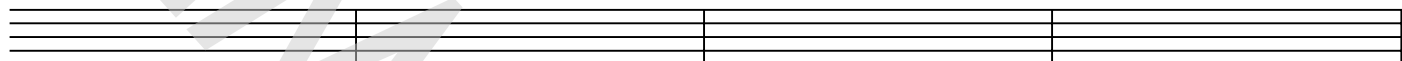
Words and Music by Robert Williams and Guy Chambers
Arranged by Frank de Vreeze
Original Key

Intro

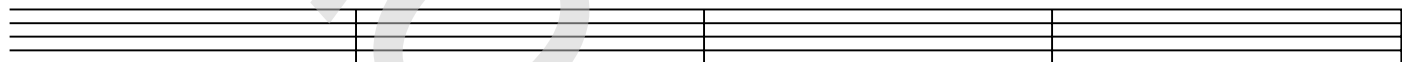
Verse 1



5



9



13

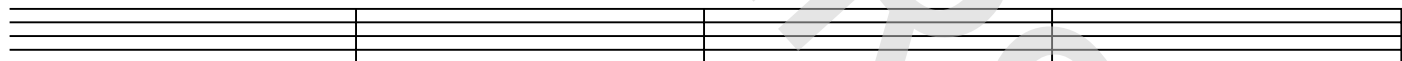


Chorus 1

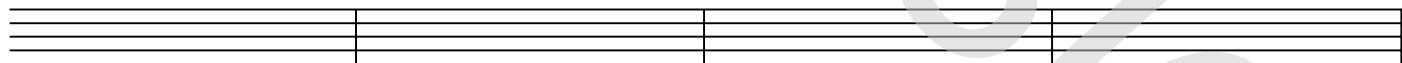
17



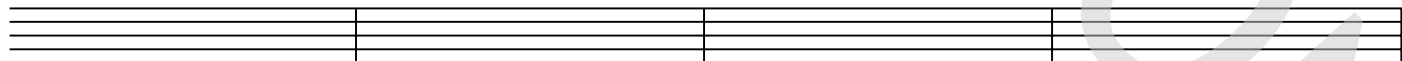
21



25

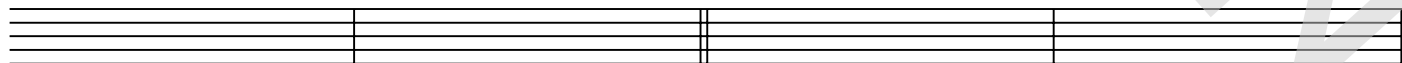


29

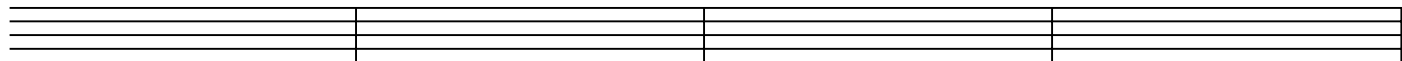


Verse 2

33



37



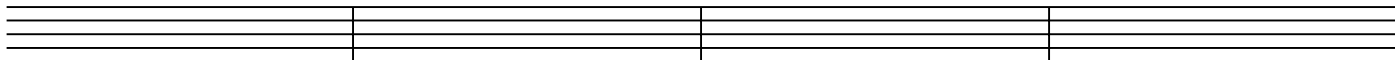
©2001 BMG Music Publishing Limited

This arrangement ©2009 BMG Music Publishing Limited (50%) EMI Music Publishing Ltd
Reproduced by permission of International Music Publications Limited (a trading name of Faber Music Limited).

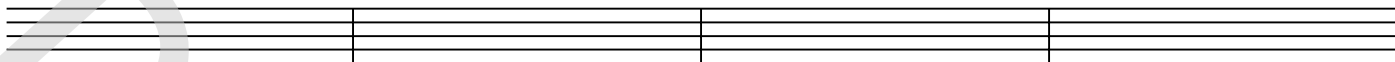
This arrangement ©2009 MusicSales (50%) administered by ChorusOnline. All Rights Reserved.

[Arranged for SATB, SSAA and Chorus-LIGHT]

89

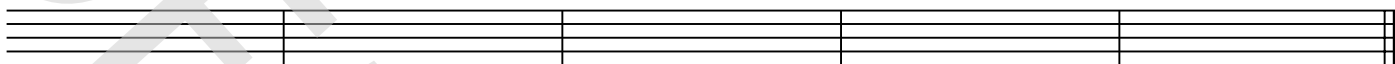


93



Rit.

97



DEMO VERSION

4 Something Beautiful

Leadsheet

60

D C^m E^b/B^b A^b

— you, may you find it by the end of — the day. — You won't be

63

B^b/F F A^b E^b G^b A^b

lost — hurt, ti-red and lone - ly some-thing beau-ti-ful will come your — way.

Bridge

66

B^b E^b/B^b A^b F B^b B^b E^b/B^b A^b F D^b

Somekind of beau - ti-ful — Some kind of beau ti - ful

70

G^b/D^b C^b A^b/C D^b A

— Some kind of beau ti — ful. —

Verse 3

74

E E^m/G

All your friends think your sa - tis-fied but they can't see your soul —

76

B B⁷ E

— no — no no — For - got the time feel - ing pe -

79

C[#]/E[#] B/F[#] F[#]

- - tri-fied when they lived a - lone — aah — If you