



## A team – Ed Sheeran SSAA

Pag.

02	Full score combo C instrument
12	Full score combo Bb instrument
22	Full score combo Eb instrument
23	Full score combo 4 extra staves
47	Full score small combo
61	Full score small combo 2 extra staves
81	Full score vocals (SSAA) Piano Solo Advanced
96	Full score vocals (SSAA) Piano Solo Moderated
111	Vocals (SSAA)
129	C instrument
130	Bb instrument
131	Eb instrument
132	Piano Solo Advanced
139	Piano Solo Moderated
146	Piano Combo
151	Synthesizer
153	Guitar
157	Bassguitar
160	Drumkit
162	Leadsheet in A (melody, lyrics, chords)
168	Leadsheet in B (melody, lyrics, chords)
174	Empty paper
180	Lyrics

The index numbers above are based on the original (complete) PDF-file.  
In this smaller DEMO-version, the numbers above do NOT match this  
file !



# The A Team 3

## 01 SSAA Combo C

32

S 1 *mp* the worst things in life come

S 2 *mp* face seems wast - ing and they scream *mp* the worst things in life come

A 1 *mf* face seems wast - ing and they scream *mf* the worst things in life come

A 2 late - ly her face seems, slow - ly sink - ing, wast - ing, crum - bl - ing like pas - tries and they scream, the worst things in life come

C *C#m7* *E* *B* *F#/A#*

P.C.

Synth

Gtr. *Bm7* *D* *A* *E/G#*

Bass

D.S.

40 *Interlude 1*

S 1 *p* free hoo hoo hoo hoo hoo hoo

S 2 *p* free hoo hoo hoo hoo hoo hoo

A 1 free to us, 'cause we're just un - der the up - per - hand, and go mad for a cou - ple grams and she don't want to go out - side to - night.

A 2 free to us, 'cause we're just un - der the up - per - hand, and go mad for a cou - ple grams and she don't want to go out - side to - night.

C *G#m* *E* *B* *G#m* *E* *B*

P.C.

Synth

Gtr. *F#m* *D* *A* *F#m* *D* *A*

Bass

D.S.

# The A Team 5

## 01 SSAA Combo C

67

S 1  
\_ tried to swim \_ and stay a-float. \_ Dry house, \_ wet clothes. \_ Loose change, \_ bank notes, \_ wea-ry eyed, \_ dry \_ throat,

S 2  
for an - gels \_ to fly - - - - - oo

A 1  
for an - gels \_ to fly - - - - - oo

A 2  
\_ tried to swim \_ and stay a-float. \_ Dry house, \_ wet clothes. \_ Loose change, \_ bank notes, \_ wea-ry eyed, \_ dry \_ throat,

C

P.C.  
F#/A# G#m7 Eadd9 B Bmaj7 B F#/A#

Synth

Gtr.  
E F#m7 Dadd9 A E

Bass

D.S.

77

*Chorus 2*

S 1  
\_ call girl, \_ no phone. \_ *pp* oo

S 2  
*p* they say \_ A team \_ day dream

A 1  
*p* they say \_ A team \_ day dream

A 2  
*mf* \_ call girl, \_ no phone. \_ And they say she's in the class A \_ team, stuck in her \_ day - dream,

C

P.C.  
G#m7 Eadd9 B C#m7 E B

Synth

Gtr.  
F#m7 Dadd9 A Bm7 D A

Bass

D.S.

# The A Team 7

## 01 SSAA Combo C

102

S 1  
hoo - hoo hoo hoo - hoo it's too cold out - side

S 2  
hoo - hoo hoo hoo - hoo it's too cold out - side

A 1  
out - side to - night. And in the pipe she flies to the moth-er-land, or sells love to an - oth-er man, it's too cold out - side

A 2  
out - side to - night. And in the pipe she flies to the moth-er-land, or sells love to an - oth-er man, it's too cold out - side

C  
F#/e Emaj7 F#/b G#m7/b F#/b G#m7/b F#/G# G#m7 F#/e Emaj7 F#/b G#m7/b F#/b G#m7/b F#/G# G#m7 F#/e Emaj7

P.C.

Synth

Gtr.  
D A F#m D A F#m D

Bass

D.S.

111

*Bridge*

S 1  
for an - gels to fly for an - gels to fly

S 2  
*pp* an - gels fly *mm* *a* *p*

A 1  
*pp* an - gels fly *mm* *a*

A 2  
for an - gels to fly. An an - gel will die, cov-ered in while, closed eye, and hop-ing for a bet-ter life.

C  
F#/b G#m7/b F# B/f# C#m7 Eadd9 G#m7 B

P.C.

Synth

Gtr.  
A Eadd11 Bm7 Dadd9 F#m7 A

Bass

D.S.

141 *mp* *Interlude 3* *p*

S1 the worst things in life come free hoo hoo hoo hoo

S2 and they scream the worst things in life come free hoo hoo hoo hoo

A1 and they scream the worst things in life come free to us, and we're all un-der the up-per-hand, and go mad for a cou-ple grams and we don't want to go

A2 tries and they scream, the worst things in life come free to us,

C *colla voce* *mp*

P.C. B F#

Synth

Gtr. A E F#m7 D A F#m7

Bass

D.S.

150 *p*

S1 hoo - hoo hoo hoo hoo hoo hoo hoo hoo it's too cold out - side for an -

S2 hoo - hoo hoo hoo hoo hoo hoo hoo hoo it's too cold out - side

A1 out - side to - night. And in the pipe we fly to the moth-er-land, or sell love to an - oth-er man, it's too cold out - side

A2 *mp* And in the pipe we fly to the moth-er-land, or sell love to an - oth-er man, it's too cold out - side *mf* for an -

C

P.C. F#m7 G#m7 F#m7 F#m7 E#m7 F#m7 B F#m7 G#m7/b F#m7 G#m7 F#m7 E#m7 F#m7 B *cresc.* *mp*

Synth

Gtr. Dadd9 A F#m7 D A F#m7 D A *mp*

Bass *mp*

D.S.



02 SSAA Combo Bb

# The A Team

- Ed Sheeran -

Words and Music by Ed Sheeran  
Original Key A Major  
Arranged by Hans Kaldeway

DEMO

DEMO

$\text{♩} = 168$   
Intro Verse 1

Soprano 1

Soprano 2

Alto 1

Alto 2 *mp*  
White lips, pale face, breath-ing in snow - flakes.

Bb Instr.

Piano Combo *mp*  
B *No guitar: play small notes* F#/A# G#m7 Eadd9 B B F#/A#

Synthesizer

Guitar *mp*  
A *Capo on 2nd fret* E/G# F#m7 Dadd9 A A E/G#  
The notated guitar part is meant as a suggestion.  
Feel free to make up your own accompaniment,  
in a fingerpicking style.

Drum Set *p*  
*brushes* > > > > / / / / /

© www.ChorusOnline.com / 0031 (0)6-41577756



# The A Team 3

## 02 SSAA Combo Bb

32

S 1 *mp* the worst things in life come

S 2 *mp* face seems wast - ing and they scream the worst things in life come

A 1 *mf* face seems wast - ing and they scream the worst things in life come

A 2 late - ly her face seems, slow - ly sink - ing, wast - ing, crum - bl - ing like pas - tries and they scream, the worst things in life come

Bb

P.C. C#m7 E B F#/A#

Synth

Gtr. Bm7 D A E/G#

Bass

D.S.

40

*Interlude 1*

S 1 *p* free hoo hoo - hoo hoo hoo - hoo

S 2 *p* free hoo hoo - hoo hoo hoo - hoo

A 1 free to us, 'cause we're just un - der the up - per - hand, and go mad for a cou - ple grams and she don't want to go out - side to - night.

A 2 free to us, 'cause we're just un - der the up - per - hand, and go mad for a cou - ple grams and she don't want to go out - side to - night.

Bb

P.C. G#m E B G#m E B

Synth

Gtr. F#m D A F#m D A

Bass

D.S.



# The A Team 7

## 02 SSAA Combo Bb

102

S 1  
hoo - hoo hoo hoo - hoo it's too cold out - side

S 2  
hoo - hoo hoo hoo - hoo it's too cold out - side

A 1  
out - side to - night. And in the pipe she flies to the moth - er - land, or sells love to an - oth - er man, it's too cold out - side

A 2  
out - side to - night. And in the pipe she flies to the moth - er - land, or sells love to an - oth - er man, it's too cold out - side

Bb

P.C.  
F#/e Emaj7 F#/b G#m7/b F#/b G#m7/b F#/G# G#m7 F#/e Emaj7 F#/b G#m7/b F#/b G#m7/b F#/G# G#m7 F#/e Emaj7

Synth

Gtr.  
D A F#m D A F#m D

Bass

D.S.

111

*Bridge*

S 1  
for an - - - - gets to fly for an - gets to fly

S 2  
*pp* an - gets fly *mm* *a* *p*

A 1  
an - gets fly *mm* *a*

A 2  
for an - gets to fly. An an - gel will die, cov - ered in while, closed eye, and hop - ing for a bet - ter life.

Bb

P.C.  
F#/b G#m7/b F# B/f# C#m7 Eadd9 G#m7 B

Synth

Gtr.  
A Eadd11 Bm7 Dadd9 F#m7 A

Bass

D.S.





03 SSAA Combo Eb

# The A Team

- Ed Sheeran -

Words and Music by Ed Sheeran  
Original Key A Major  
Arranged by Hans Kaldewey

DEMO

VERSE

**♩ = 168**  
*Intro* *Verse 1*

Soprano 1

Soprano 2

Alto 1

Alto 2 *mp*  
White lips, pale face, breath-ing in

Eb Instr.

Piano Adv. *mp*  
*No guitar: play small notes*  
B F#/A# G#m7 Eadd9 B B

Synthesizer

Guitar *mp*  
A *Capo on 2nd fret* E/G# F#m7 Dadd9 A A  
The notated guitar part is meant as a suggestion. Feel free to make up your own accompaniment, in a fingerpicking style.

Drum Set *p*  
*brushes*

© www.ChorusOnline.com / 0031 (0)6-41577756



# The A Team 3

## 03 SSAA Combo Eb

31

S 1 oo the worst things in life come

S 2 face seems wast - ing and they scream the worst things in life come

A 1 face seems wast - ing and they scream the worst things in life come

A 2 eight - een, but late - ly her face seems, slow - ly sink - ing, wast - ing, crum - bl - ing like pas - tries and they scream, the worst things in life come

Eb

P.A.

Synth

Gtr.

Bass

D. S.

F#/A# C#m7 E B F#/A#

40

Interlude 1

S 1 free hoo hoo - hoo hoo hoo - hoo

S 2 free hoo hoo - hoo hoo hoo - hoo

A 1 free to us, 'cause we're just un - der the up - per - hand, and go mad for a cou - ple grams and she don't want to go out - side to - night.

A 2 free to us, 'cause we're just un - der the up - per - hand, and go mad for a cou - ple grams and she don't want to go out - side to - night.

Eb

P.A.

Synth

Gtr.

Bass

D. S.

G#m E B G#m E B

F#m D A F#m D A

The A Team 5  
03 SSAA Combo Eb

67

S 1  
— tried to swim — and stay a-float. — Dry house, — wet clothes. — Loose change, — bank notes, — wea-ry eyed, — dry — throat,

S 2  
for an — gets — to fly — — — — oo —

A 1  
for an — gets — to fly — — — — oo —

A 2  
— tried to swim — and stay a-float. — Dry house, — wet clothes. — Loose change, — bank notes, — wea-ry eyed, — dry — throat,

Eb

P.A.  
F#/A# G#m7 Eadd9 B Bmaj7 B F#/A#

Synth

Gtr.  
E F#m7 Dadd9 A E

Bass

D.S.

77

Chorus 2

S 1  
— call girl, — no phone. — oo — *pp*

S 2  
they say — A team — day dream *p*

A 1  
they say — A team — day dream *p*

A 2  
— call girl, — no phone. — And they say she's in the class A — team, stuck in her day - dream, *mf*

Eb

P.A.  
G#m7 Eadd9 B C#m7 E B

Synth

Gtr.  
F#m7 Dadd9 A Bm7 D A

Bass

D.S.

# The A Team 7

## 03 SSAA Combo Eb

102

S 1  
hoo - hoo hoo hoo - hoo it's too cold out - side

S 2  
hoo - hoo hoo hoo - hoo it's too cold out - side

A 1  
out - side to - night. And in the pipe she flies to the moth - er - land, or sells love to an - oth - er man, it's too cold out - side

A 2  
out - side to - night. And in the pipe she flies to the moth - er - land, or sells love to an - oth - er man, it's too cold out - side

Eb

P.A.  
F#/e Emaj7 F#/b G#m7/b F#/b G#m7/b F#/G# G#m7 F#/e Emaj7 F#/b G#m7/b F#/b G#m7/b F#/G# G#m7 F#/e Emaj7

Synth

Gtr.  
D A F#m D A F#m D

Bass

D.S.

111

*Bridge*

S 1  
for an - gels to fly for an - gels to fly

S 2  
*pp* an - gels fly *mm* *a* *p*

A 1  
*pp* an - gels fly *mm* *a*

A 2  
for an - gels to fly. An an - gel will die, cov - ered in while, closed eye, and hop - ing for a bet - ter life.

Eb

P.A.  
F#/b G#m7/b F# B/f# C#m7 Eadd9 G#m7 B

Synth

Gtr.  
A Eadd11 Bm7 Dadd9 F#m7 A

Bass

D.S.

The A Team 9  
03 SSAA Combo Eb

141 *mp* *Interlude 3* *p*

S 1 the worst things in life come free hoo hoo hoo hoo

S 2 and they scream the worst things in life come free hoo hoo hoo hoo

A 1 and they scream the worst things in life come free to us, and we're all un-der the up-per-hand, and go mad for a cou-ple grams and we don't want to go

A 2 tries and they scream, the worst things in life come free to us,

Eb *colla voce* *mp*

P.A. B F#

Synth

Gtr. A E F#m7 D A F#m7

Bass

D.S.

150 *p*

S 1 hoo - hoo hoo hoo - hoo it's too cold out - side for an -

S 2 hoo - hoo hoo hoo - hoo it's too cold out - side

A 1 out - side to - night. And in the pipe we fly to the moth-er-land, or sell love to an - oth-er man, it's too cold out - side

A 2 *mp* And in the pipe we fly to the moth-er-land, or sell love to an - oth-er man, it's too cold out - side *mf* for an -

Eb

P.A. F#m7 G#m7 F#e Emaj7 F#/b B F#/b G#m7/b F#m7 G#m7 F#e Emaj7 F#/b B *cresc.* *mp*

Synth

Gtr. Dadd9 A F#m7 D A F#m7 D A *mp*

Bass *mp*

D.S.



29

S 1 — 00 — 00 —

S 2 day dream — face seems — wast - ing — and they scream — the worst things in life come free

A 1 day dream — face seems — wast - ing — and they scream — the worst things in life come free to us, 'cause we're

A 2 - dream, been this way — since eight - een, but late - ly — her face seems, slow - ly sink - ing, wast - ing, crum - bl - ing like pas - ties and they — scream, the worst things in life come free to us, 'cause we're

1

2

3

4

B F#m7 C#m7 E B F#m7

R.C.

Synth

A E/G# Bm7 D A E/G#

Gtr.

BASS

D. S.







119

S1 *p* mm straight down the line

S2 *p* a bet-ter life — this — time — mm — hoo — hoo — hoo — hoo —

A1 *p* a bet-ter life — this — time — mm — hoo — hoo —

A2 *p* hop-ing for a bet-ter life. This — time. we'll fade out to — night! straight down the line hoo — hoo — *mp* And they say she's in the class A — team.

1

2

3

4

R.C. *B* *Chm7* *Eadd9* *F#/G# G#m7* *E* *B* *Chm7* *E*

Synth *A* *Bm7* *Dadd9* *F#m* *D* *A* *Bm7* *D*

Gtr. *A* *Bm7* *Dadd9* *F#m* *D* *A* *Bm7* *D*

BASS *A* *Bm7* *Dadd9* *F#m* *D* *A* *Bm7* *D*

D. S. *A* *Bm7* *Dadd9* *F#m* *D* *A* *Bm7* *D*

Chorus 3

144 *Interlude 3*

S 1 free hoo hoo hoo hoo hoo hoo hoo hoo hoo hoo

S 2 free hoo hoo hoo hoo hoo hoo hoo hoo hoo hoo

A 1 free to us — and we're all un-der the up-per-hand, and go mad for a cou-ple grams and we don't want to go out - side to - night — *mp* And in the pipe we fly to the moth-er-land, or sell love to an -

A 2 free to us — *mp* And in the pipe we fly to the moth-er-land, or sell love to an -

1  
2  
3  
4

R.C. F#/G# G#m7 F#/e E maj7 F#/B B

Synth F#m7 D A F#m7 Dadd9 A F#m7 D A

Gtr. F#m7 D A F#m7 Dadd9 A F#m7 D A

BASS F#m7 D A F#m7 Dadd9 A F#m7 D A

D. S.







05 SSAA small Combo

# The A Team

- Ed Sheeran -

Words and Music by Ed Sheeran  
Original Key A Major  
Arranged by Hans Kaldewey

DEMO

VERSION

$\text{♩} = 168$   
*Intro*

Soprano 1

Soprano 2

Alto 1

Alto 2

Piano Combo

*No guitar: play small notes*

*mp*

B F#/A# G#m7 Eadd9 B

Guitar

*mp*

A Capo on 2nd fret E/G# F#m7 Dadd9 A

The notated guitar part is meant as a suggestion.  
Feel free to make up your own accompaniment,  
in a fingerpicking style.

Drum Set

*p* brushes > > > >

© www.ChorusOnline.com / 0031 (0)6-41577756

ORIGINAL DO NOT COPY

24 *Chorus 1* *pp*

S 1 oo

S 2 *p* they say A team day dream

A 1 *p* they say A team day dream

A 2 *mf* And they say she's in the class A team, stuck in her day - dream, been this way since

P.C. *C#m7* *E* *B*

Gtr. *Bm7* *D* *A*

Bass *mp*

D. S.

31

S 1 oo

S 2 face seems wast - ing and they scream

A 1 face seems wast - ing and they scream

A 2 eight - een, but late - ly her face seems, slow - ly sink - ing, wast - ing, crum - bl - ing like pas - tries and they

P.C. *F#m7* *C#m7* *E* *B*

Gtr. *E/G#* *Bm7* *D* *A*

Bass

D. S.

50

S 1  
hoo - hoo \_\_\_\_\_ for an - - - -

S 2  
hoo - hoo \_\_\_\_\_ it's too cold \_\_\_\_\_ out - side

A 1  
moth-er-land, or sells love to an - oth-er man, it's too cold \_\_\_\_\_ out - side

A 2  
moth-er-land, or sells love to an - oth-er man, it's too cold \_\_\_\_\_ out - side \_\_\_\_\_ for an - gels to fly

P.C.  
E B G#m B F#add11

Gtr.  
D A F#m D A Eadd11

Bass

D. S.

57

S 1  
- - gels to fly \_\_\_\_\_ for an - gels to fly \_\_\_\_\_

S 2  
*pp*  
an - gels fly fly fly an - gels fly fly

A 1  
*pp*  
an - gels fly fly fly an - gels fly fly

A 2  
\_\_\_\_\_ for an - gels to fly \_\_\_\_\_

P.C.  
G#m7(9) G#m7 E6 9 B G#m7(9) G#m7 E6 9 B  
*Play always*  
*mp*

Gtr.  
F#m9 D6 9 A F#m9 D6 9 A

Bass

D. S.

Chorus 2

78

S 1 *pp*  
no phone. oo

S 2 *p*  
they say A team

A 1 *p*  
they say A team

A 2 *mf*  
no phone. And they say she's in the class A team, stuck in her day -

P.C. Eadd9 B C#m7 E

Gtr. Dadd9 A Bm7 D

Bass

D. S.

85

S 1 oo oo

S 2 day dream face seems

A 1 day dream face seems

A 2 - dream, been this way since eight - een, but late - ly her face seems, slow - ly sink - ing, wast -

P.C. B F# C#m7

Gtr. A E Bm7

Bass

D. S.

103

S 1  
hoo - hoo \_\_\_\_\_ hoo \_\_\_\_\_ hoo - hoo \_\_\_\_\_

S 2  
hoo - hoo \_\_\_\_\_ hoo \_\_\_\_\_ hoo - hoo \_\_\_\_\_

A 1  
to - night. \_\_\_\_\_ And in the pipe she flies to the moth-er-land, or sells love to an - oth-er man,

A 2  
to - night. \_\_\_\_\_ And in the pipe she flies to the moth-er-land, or sells love to an - oth-er man,

P.C.  
F#/b G#m/b F#/b G#m7/b F#/G# G#m7 F#/e Emaj7 F#/b G#m/b F#/b G#m7/b

Gtr.  
A F#m D A

Bass

D. S.

109

S 1  
it's too cold \_\_\_\_\_ out - side \_\_\_\_\_ for an - gels \_\_\_\_\_ to fly \_\_\_\_\_

S 2  
it's too cold \_\_\_\_\_ out - side \_\_\_\_\_ an - gels \_\_\_\_\_ fly \_\_\_\_\_

A 1  
it's too cold \_\_\_\_\_ out - side \_\_\_\_\_ an - gels \_\_\_\_\_ fly \_\_\_\_\_

A 2  
it's too cold \_\_\_\_\_ out - side \_\_\_\_\_ for an - gels to fly. An an - gel \_\_\_\_\_ will die, \_\_\_\_\_

Bridge

P.C.  
F#/G# G#m7 F#/e Emaj7 F#/b G#m/b F# B/f# C#m7 Eadd9

Gtr.  
F#m D A Eadd11 Bm7 Dadd9

Bass

D. S.

131

S 1 *pp* oo \_\_\_\_\_

S 2 *p* face seems \_\_\_\_\_

A 1 *p* face seems \_\_\_\_\_

A 2 \_\_\_\_\_ team, stuck in her day - dream, been this way since eight - een, but late - ly her face seems, slow - ly sink - ing, wast -

P.C. E B F# C#m7

Gtr. D A E/G# Bm7

Bass *p*

D. S. / / / / / / / /

139

S 1 *mp* the worst things in life come free *p* hoo \_\_\_\_\_

S 2 *mp* wast - ing \_\_\_\_\_ and they scream \_\_\_\_\_ the worst things in life come free *p* hoo \_\_\_\_\_

A 1 *mp* wast - ing \_\_\_\_\_ and they scream \_\_\_\_\_ the worst things in life come free to us, and we're all un - der the

A 2 - ing, crum - bl - ing like pas - tries and they \_\_\_\_\_ scream, the worst things in life come free to us, \_\_\_\_\_

P.C. E B F#

Gtr. D A E F#m7

Bass

D. S. / / / / / / / /

Interlude 3

Coda

160

S 1  
gels\_ to fly \_\_\_\_\_ for an - gels\_ to fly \_\_\_\_\_

S 2  
*pp*  
an - gels\_ fly fly fly an - gels\_ fly

A 1  
*pp*  
an - gels\_ fly fly fly an - gels\_ fly

A 2  
gels\_ to fly \_\_\_\_\_ for an - gels\_ to fly \_\_\_\_\_

P.C.  
F# B/f# F#/g# G#m7 F#/e Emaj7 F#/b B F#/b G#m7/b F#/g# G#m7 F#/e Emaj7  
*decesc.*

Gtr.  
E F#m D A F#m D  
*decesc.*

Bass

D. S.  
*mp*

167

S 1  
\_\_\_\_\_ for an - gels\_ to fly \_\_\_\_\_ *pp* an - gels\_

S 2  
fly fly an - gels\_ fly fly fly an - gels\_

A 1  
fly fly an - gels\_ fly fly fly an - gels\_

A 2  
*mp*  
for an - gels\_ to fly \_\_\_\_\_ for an - gels\_ to fly, \_\_\_\_\_ to fly,

P.C.  
F#/b B F#/b G#m7/b F#/g# G#m7 F#/e Emaj7 F#/b B F#/b G#m7/b F#/g# G#m7  
*p* *decesc.*

Gtr.  
A F#m D A F#m  
*p* *decesc.*

Bass  
*p* *decesc.*

D. S.  
*p* *decesc.*

06 SSAA small Combo extra staves

# The A Team

- Ed Sheeran -

Words and Music by Ed Sheeran  
Original Key A Major  
Arranged by Hans Kaldewey

*♩* = 168

**Intro**

Soprano 1  
Soprano 2  
Alto 1  
Alto 2

*mp*

**Verse 1**

White lips, \_\_\_\_\_ pale face, \_\_\_\_\_ breath-ing in \_\_\_\_\_ snow - flakes.

*mp*

Piano Combo

1  
2

**A** Capo on 2nd fret  
*mp*

**B** No guitar: play small notes

F#/A# G#m7  
Eadd9 B  
E/G# F#m7  
Dadd9 A  
A  
F#/A#  
E/G#

Guitar

*mp*

The notated guitar part is meant as a suggestion. Feel free to make up your own accompaniment, in a fingerpicking style.

Drum Set

*p* brushes >

23

*pp* Chorus 1

S 1 00 \_\_\_\_\_ 00 \_\_\_\_\_

S 2 *p* they say \_\_\_\_\_ A team \_\_\_\_\_ day dream \_\_\_\_\_

A 1 *p* they say \_\_\_\_\_ A team \_\_\_\_\_ day dream \_\_\_\_\_

A 2 *mf* And they say she's in the class A team, stuck in her day - dream, been this way - since eight - een, but

1

2

PC: A B C#m7 E B F#/A#

A Bm7 D A E/G#

Gtr. A

Bass *mp*

D, S.

Interlude 1

40

S 1 free hoo - - - - - hoo - - - - - hoo - - - - - hoo - - - - -

S 2 free hoo - - - - - hoo - - - - - hoo - - - - - hoo - - - - -

A 1 free to us, 'cause we're just un - der the up - per - hand, and go mad for a cou - ple grams and she don't want to go - - - - - out - - - - - side to - - - - - night.

A 2 free to us, 'cause we're just un - der the up - per - hand, and go mad for a cou - ple grams and she don't want to go - - - - - out - - - - - side to - - - - - night.

1

2

PC: G#m E B G#m E B

Gtr. F#m D A F#m D A

Bass 8

D. S.

The A Team 7  
06 SSA small Combo extra staves

57

S1 - - gets - to fly \_\_\_\_\_

S2 *pp* an - gets - fly fly fly fly

A1 *pp* an - gets - fly fly fly fly

A2 - - for an - gets to fly \_\_\_\_\_

Ripped gloves. *mp*

Verse 2

Ripped gloves. *p*

fly - - - -  
gradually change vowel *p*

fly - - - -  
gradually change vowel *mp*

Ripped gloves.

1

2

PC: *mp* *plays always*

G#m7(9) G#m7 E9 B

G#m7(9) G#m7 E9 B

F#m9 D9 A

F#m9 D9 A

Gtr. 8

Bass

D. S.



The A Team 11  
06 SSAA small Combo extra staves

Interlude 2

92

S 1 *mp* the worst things In life come free *p* hoo - hoo - hoo -

S 2 *mp* and they scream the worst things In life come free *p* hoo - hoo - hoo -

A 1 and they scream the worst things In life come free to us, 'cause we're just un - der the up - per - hand, and go mad for a

A 2 cum - bl - ing like pas - tries and they scream, the worst things In life come free to us, 'cause we're just un - der the up - per - hand, and go mad for a

1

2

B B F# F#/G# G#m7 F#/E Emaj7 F#/D B

A A

E E F#m D A

PC.

Gtr.

Bass

D. S.



Chorus 3

126

S1

pp

S2

pp

A1

pp

A2

pp

And they say she's in the class A team, stuck in her day - dream, been this way - since eight - een, but late - ly - her

1

2

PC.

E B C#m7 E B F#

Gtr.

D A Bm7 D A E/G#

Bass

D A Bm7 D A E/G#

D. S.



10/4

S 1 for an - gets - to fly -

S 2 fly an - gets - fly

A 1 fly an - gets - fly

A 2 fly an - gets - to fly -

1

2

PC: F#/b G#m7/b F#/g# G#m7 F#/e Emaj7 F#/b B F#/b G#m7/b F#/g# G#m7 F#/e Emaj7 F#/b B

Gtr. F#m D A

Bass p p p

D, S.

# The A Team

- Ed Sheeran -

Words and Music by Ed Sheeran  
Original Key A Major  
Arranged by Hans Kaldeway

**Intro**  
♩ = 168  
Piano Solo Advanced  
*mp*

B F#/a# G#m7 Eadd9

The introduction consists of six measures of music in A major, 4/4 time. The right hand plays a series of chords: B, F#/a#, G#m7, Eadd9, B, F#/a#. The left hand plays a steady eighth-note accompaniment.

**Verse 1**  
A 2  
*mp*

White lips, pale face, breath-ing in snow - flakes.

B B F#/a#

The first line of the verse (measures 7-12) features a vocal line in the treble clef and piano accompaniment in the bass clef. The lyrics are: "White lips, pale face, breath-ing in snow - flakes." The piano accompaniment uses chords B, B, and F#/a#.

A 2

Burnt lungs, sour taste. Light's gone, day's end,

G#m7 Eadd9 B

The second line of the verse (measures 13-18) continues the vocal and piano parts. The lyrics are: "Burnt lungs, sour taste. Light's gone, day's end,". The piano accompaniment uses chords G#m7, Eadd9, and B.

A 2

strug-gl - ing to pay rent. Long nights, strange men. And they

F#/a# G#m7 Eadd9 B

*mf*

The third line of the verse (measures 19-24) concludes the vocal and piano parts. The lyrics are: "strug-gl - ing to pay rent. Long nights, strange men. And they". The piano accompaniment uses chords F#/a#, G#m7, Eadd9, and B. The dynamic marking changes to *mf* at the end.

36

S 1 *mp* the worst things in life come free

S 2 *mp* and they scream the worst things in life come free

A 1 *mf* and they scream the worst things in life come free to us, 'cause we're

A 2 crum-bl-ing like pas-tries and they scream, the worst things in life come free to us, 'cause we're

P.S.A. *B* *F#/a#* */b*

*Interlude 1*

41

S 1 *p* hoo hoo - hoo hoo

S 2 *p* hoo hoo - hoo hoo

A 1 just un-der the up-per-hand, and go mad for a cou-ple grams and she don't want to go

A 2 just un-der the up-per-hand, and go mad for a cou-ple grams and she don't want to go

P.S.A. *G#m7* *Eadd9* *B* *G#m7*

57

S 1  
- - gels\_ to fly \_\_\_\_\_ for an - gels\_ to fly \_\_\_\_\_

S 2  
*pp*  
an - gels\_ fly fly fly an - gels\_ fly

A 1  
*pp*  
an - gels\_ fly fly fly an - gels\_ fly

A 2  
- for an - gels to fly \_\_\_\_\_

P.S.A.  
G#m9 E6\_9 B G#m9 E6\_9

63

Verse 2

S 1  
*mp*  
- Ripped gloves, rain - coat, tried to swim and stay a - float.

S 2  
*p*  
fly fly gradually change vowel oo

A 1  
*p*  
fly fly gradually change vowel oo

A 2  
*mp*  
Ripped gloves, rain - coat, tried to swim and stay a - float.

P.S.A.  
B B F#a#

Chorus 2

80

S 1 *pp*  
oo \_\_\_\_\_

S 2 *p*  
they say \_\_\_\_\_ A team \_\_\_\_\_

A 1 *p*  
they say \_\_\_\_\_ A team \_\_\_\_\_

A 2 *mf*  
And they say she's in the class A \_\_\_\_\_ team, stuck in her \_\_\_\_\_ day -

P.S.A. *C#m7* *E*

85

S 1  
oo \_\_\_\_\_ oo \_\_\_\_\_

S 2  
day dream \_\_\_\_\_ face seems

A 1  
day dream \_\_\_\_\_ face seems

A 2  
- dream, been this way \_\_\_\_\_ since eight - een, but late - ly \_\_\_\_\_ her face seems,

P.S.A. *B* *F#a* *C#m7*

100

S 1  
hoo \_\_\_\_\_ hoo - hoo \_\_\_\_\_

S 2  
hoo \_\_\_\_\_ hoo - hoo \_\_\_\_\_

A 1  
cou-ple grams and she don't want to go \_\_\_\_\_ out - side to - night. \_\_\_\_\_ And in the

A 2  
cou-ple grams and she don't want to go \_\_\_\_\_ out - side to - night. \_\_\_\_\_ And in the

F#/b G#m7/b F#/g# G#m7 F#/e Emaj7 F#/b G#m/b F#/b G#m7/b

P.S.A.

105

S 1  
hoo \_\_\_\_\_ hoo - hoo \_\_\_\_\_ it's too cold \_\_\_\_\_

S 2  
hoo \_\_\_\_\_ hoo - hoo \_\_\_\_\_ it's too cold \_\_\_\_\_

A 1  
pipe she flies to the moth-er-land, or sells love to an - oth-er man, it's too cold \_\_\_\_\_

A 2  
pipe she flies to the moth-er-land, or sells love to an - oth-er man, it's too cold \_\_\_\_\_

F#/g# G#m7 F#/e Emaj7 F#/b G#m/b F#/b G#m7/b F#/g# G#m7

P.S.A.

121

S 1  
straight down the line

S 2  
time mm hoo

A 1  
time mm hoo

A 2  
time, we'll fade out to - night, straight down the line

P.S.A.  
C#m7 Eadd9 F#/g# G#m7 E  
mf

127

Chorus 3

S 1

S 2  
hoo - hoo

A 1  
hoo - hoo

A 2  
mp  
And they say she's in the class A team, stuck in her day

P.S.A.  
B C#m7 E  
p

Interlude 3

144

S 1 *p* free hoo hoo - hoo

S 2 *p* free hoo hoo - hoo

A 1 free to us, and we're all un - der the up - per - hand, and go mad for a cou - ple grams

A 2 free to us,

P.S.A. G#m7 E B

149

S 1 hoo hoo - hoo hoo

S 2 hoo hoo - hoo hoo

A 1 and we don't want to go out - side to - night. And in the pipe we fly to the

A 2 *mp* And in the pipe we fly to the

P.S.A. G#m7 E B F#/g# G#m7

166

S 1  
for an - gels — to fly —

S 2  
fly fly fly an - gels — fly fly

A 1  
fly fly fly an - gels — fly fly

A 2  
*mp*  
— for an - gels — to fly — for an -

F#/e Emaj7 F#/b B F#/b G#m7/b F#/g# G#m7 F#/e Emaj7 F#/b B

P.S.A.

172

S 1  
*pp*  
an - gels — fly fly fly an - gels — fly fly *poco rit.*

S 2  
fly an - gels — fly fly fly an - gels — fly fly

A 1  
fly an - gels — fly fly fly an - gels — fly fly

A 2  
*p*  
— gels — to fly, — to fly, — to fly, — or an - gels — to die. — fly fly

F#/b G#m7/b F#/g# G#m7 F#/e Emaj7 F#/b B

P.S.A.  
*decresc.*



08 SSAA Piano Solo Moderated

# The A Team

- Ed Sheeran -

Words and Music by Ed Sheeran  
Original Key A Major  
Arranged by Hans Kaldeway

**Intro**  
♩ = 168  
Piano Solo Moderated  
*mp*

B F#/a# G#m7 Eadd9

**Verse 1**  
A 2  
*mp*

White lips, pale face, breath-ing in snow - flakes.

B B F#/a#

P.S.M.

A 2

Burnt lungs, sour taste. Light's gone, day's end,

G#m7 Eadd9 B

P.S.M.

A 2

strug-gl - ing to pay rent. Long nights, strange men. And they

F#/a# G#m7 Eadd9 B

P.S.M.

© www.ChorusOnline.com / 0031 (0)6-41577756



The A Team 3  
08 SSAA Piano Solo Moderated

Interlude 1

37

S 1 *mp* the worst things in life come free *p* hoo

S 2 *mp* and they scream the worst things in life come free *p* hoo

A 1 *mf* and they scream the worst things in life come free to us, 'cause we're just un-der the

A 2 - tries and they scream, the worst things in life come free to us, 'cause we're just un-der the

P.S.M. B F#/a# /b G#m7

42

S 1 hoo - hoo hoo

S 2 hoo - hoo hoo

A 1 up-per-hand, and go mad for a cou-ple grams and she don't want to go out - side

A 2 up-per-hand, and go mad for a cou-ple grams and she don't want to go out - side

P.S.M. Eadd9 B G#m7 Eadd9

58

S 1  
for an - gels - to fly

S 2  
fly fly fly an - gels - fly fly

A 1  
fly fly fly an - gels - fly fly

A 2  
for an - gels to fly

P.S.M.  
E<sup>6</sup><sub>9</sub> B G<sup>#m</sup><sub>9</sub> E<sup>6</sup><sub>9</sub> B

64

Verse 2

S 1  
*mp*  
Ripped gloves, rain - coat, tried to swim and stay a - float.

S 2  
*p*  
fly gradually change vowel oo

A 1  
*p*  
fly gradually change vowel oo

A 2  
*mp*  
Ripped gloves, rain - coat, tried to swim and stay a - float.

P.S.M.  
B F<sup>#</sup>/a<sup>#</sup>

Chorus 2

80

S 1 *pp*  
oo

S 2 *p*  
they say \_\_\_\_\_ A team \_\_\_\_\_

A 1 *p*  
they say \_\_\_\_\_ A team \_\_\_\_\_

A 2 *mf*  
And they say she's in the class A \_\_\_\_\_ team, stuck in her \_\_\_\_\_ day -

P.S.M. *C#m7* *E*

85

S 1  
oo oo

S 2  
day dream \_\_\_\_\_ face seems

A 1  
day dream \_\_\_\_\_ face seems

A 2  
- dream, been this way \_\_\_\_\_ since eight - een, but late - ly \_\_\_\_\_ her face seems,

P.S.M. *B* *F#/a#* *C#m7*

The A Team 9  
08 SSAA Piano Solo Moderated

100

S 1  
hoo hoo - hoo

S 2  
hoo hoo - hoo

A 1  
cou-ple grams and she don't want to go out - side to - night. And in the

A 2  
cou-ple grams and she don't want to go out - side to - night. And in the

F#/b G#m7/b F#/g# G#m7 F#/e Emaj7 F#/b G#m/b F#/b G#m7/b

P.S.M.

105

S 1  
hoo hoo - hoo it's too cold

S 2  
hoo hoo - hoo it's too cold

A 1  
pipe she flies to the moth-er-land, or sells love to an - oth-er man, it's too cold

A 2  
pipe she flies to the moth-er-land, or sells love to an - oth-er man, it's too cold

F#/g# G#m7 F#/e Emaj7 F#/b G#m/b F#/b G#m7/b F#/g# G#m7

P.S.M.

121

S 1  
straight down the line

S 2  
time mm hoo

A 1  
time mm hoo

A 2  
time, we'll fade out to - night, straight down the line

P.S.M.  
C#m7 Eadd9 F#/g# G#m7 E

127

Chorus 3

S 1

S 2  
hoo - hoo

A 1  
hoo - hoo

A 2  
mp  
And they say she's in the class A team, stuck in her day

P.S.M.  
B C#m7 E

Interlude 3

144

S 1 *p* free hoo hoo - hoo

S 2 *p* free hoo hoo - hoo

A 1 free to us, and we're all un - der the up - per - hand, and go mad for a cou - ple grams

A 2 free to us,

P.S.M. G#m7 E B

149

S 1 hoo hoo - hoo hoo

S 2 hoo hoo - hoo hoo

A 1 and we don't want to go out - side to - night. And in the pipe we fly to the

A 2 *mp* And in the pipe we fly to the

P.S.M. G#m7 E B F#/g# G#m7

166

S 1  
for an - gels - to fly

S 2  
fly fly fly an - gels - fly fly

A 1  
fly fly fly an - gels - fly fly

A 2  
*mp*  
- for an - gels to fly - for an -

F#/e Emaj7 F#/b B F#/b G#m7/b F#/g# G#m7 F#/e Emaj7 F#/b B

P.S.M.

172

S 1  
*pp*  
an - gels - fly fly fly an - gels - fly fly *poco rit.*

S 2  
fly an - gels - fly fly fly an - gels - fly fly

A 1  
fly an - gels - fly fly fly an - gels - fly fly

A 2  
*p*  
- gels to fly, - to fly, - to fly, - or an - gels - to die. - fly fly

F#/b G#m7/b F#/g# G#m7 F#/e Emaj7 F#/b B

P.S.M.



09 SSAA

# The A Team

- Ed Sheeran -

Words and Music by Ed Sheeran  
Original Key A Major  
Arranged by Hans Kaldeway

♩ = 168  
**Intro**

## Verse 1

Alto 2 **8** *mp*

White lips, pale face, breath-ing in

A 2 **12**

— snow - flakes. Burnt lungs, sour taste.

A 2 **17**

Light's gone, day's end, strug- gl - ing to pay rent.

A 2 **21** *mf*

— Long nights, strange men. And they

## Chorus 1

S 1 **25** *pp*

oo

S 2 *p*

they say A team day dream

A 1 *p*

they say A team day dream

A 2

say she's in the class A team, stuck in her day - dream,

Copyright © 2011 Sony/ATV Music Publishing (UK) Limited  
All Rights Administered by Sony/ATV Music Publishing LLC, 424 Church Street, Suite 1200, Nashville, TN 37219

International Copyright Secured All Rights Reserved

*Interlude 1*

39

S 1  
\_ things in life come free hoo \_\_\_\_\_

S 2  
\_ things in life come free hoo \_\_\_\_\_

A 1  
\_ things in life come free to us, \_ 'cause we're just un-der the up-per-hand,

A 2  
\_ things in life come free to us, \_ 'cause we're just un-der the up-per-hand,

43

S 1  
hoo - hoo \_\_\_\_\_ hoo \_\_\_\_\_

S 2  
hoo - hoo \_\_\_\_\_ hoo \_\_\_\_\_

A 1  
and go mad for a cou-ple grams and she don't want to go \_\_\_\_\_ out - side

A 2  
and go mad for a cou-ple grams and she don't want to go \_\_\_\_\_ out - side

57

S 1  
gels \_ to fly \_\_\_\_\_ for an - gels \_ to fly

S 2  
*pp*  
an - gels \_ fly fly fly an - gels \_

A 1  
*pp*  
an - gels \_ fly fly fly an - gels \_

A 2  
\_\_\_\_\_ for an - gels to fly \_\_\_\_\_

62

Verse 2

S 1  
\_\_\_\_\_ *mp*  
Ripped gloves, \_ rain - coat,

S 2  
fly fly fly - - - - - oo  
*p*

A 1  
fly fly fly - - - - - oo  
*p* gradually change vowel

A 2  
\_\_\_\_\_ *mp*  
Ripped gloves, \_ rain - coat,

76

S 1  
dry throat, call girl, no phone.

S 2

A 1

A 2  
dry throat, call girl, no phone. *mf*  
And they

Chorus 2

81 *pp*

S 1  
oo

S 2  
*p*  
they say A team day dream

A 1  
*p*  
they say A team day dream

A 2  
say she's in the class A team, stuck in her day - dream,

*Interlude 2*

95

S 1  
\_ things in life come free hoo \_\_\_\_\_

S 2  
\_ things in life come free hoo \_\_\_\_\_

A 1  
\_ things in life come free to us, \_ 'cause we're just un-der the up-per-hand,

A 2  
\_ things in life come free to us, \_ 'cause we're just un-der the up-per-hand,

99

S 1  
hoo - hoo \_\_\_\_\_ hoo \_\_\_\_\_

S 2  
hoo - hoo \_\_\_\_\_ hoo \_\_\_\_\_

A 1  
and go mad for a cou-ple grams and she don't want to go \_\_\_\_\_ out - side

A 2  
and go mad for a cou-ple grams and she don't want to go \_\_\_\_\_ out - side

*Bridge*

111

S 1  
for an - - - - - gels to fly \_\_\_\_\_

S 2  
*pp*  
an - gels fly \_\_\_\_\_

A 1  
*pp*  
an - gels fly \_\_\_\_\_

A 2  
for an - gels to fly. An an - gel will die, \_\_\_\_\_

116

S 1  
for an - gels to fly \_\_\_\_\_

S 2  
mm \_\_\_\_\_ *p*  
a

A 1  
mm \_\_\_\_\_ *p*  
a

A 2  
cov-ered in white, \_\_\_\_\_ closed eye, and hop-ing for a bet-ter life.

131

S 1

S 2

A 1

A 2

\_\_ team, stuck in her \_\_\_ day - dream, been this way \_\_\_ since eight - een, but

136

S 1

S 2

A 1

A 2

late - ly \_\_\_ her face seems, slow - ly sink - ing, wast - ing, crum - bl - ing like pas -

*pp*

*p*

*p*

149

S 1  
hoo hoo - hoo

S 2  
hoo hoo - hoo

A 1  
and we don't want to go out - side to - night. And in the

A 2  
*mp*  
And in the

153

S 1  
hoo hoo - hoo it's too cold

S 2  
hoo hoo - hoo it's too cold

A 1  
pipe we fly to the moth-er-land, or sell love to an - oth-er man, it's too cold

A 2  
pipe we fly to the moth-er-land, or sell love to an - oth-er man, it's too cold

166

S 1  
for an - gels to fly

S 2  
fly fly fly an - gels

A 1  
fly fly fly an - gels

A 2  
*mp*  
for an - gels to fly

Detailed description: This block contains the musical score for measures 166 through 170. It features four vocal staves: Soprano 1 (S 1), Soprano 2 (S 2), Alto 1 (A 1), and Alto 2 (A 2). The music is in a key with three sharps (F#, C#, G#) and a common time signature. The lyrics are: S 1: "for an - gels to fly"; S 2: "fly fly fly an - gels"; A 1: "fly fly fly an - gels"; A 2: "for an - gels to fly". A dynamic marking of *mp* (mezzo-piano) is placed above the A 2 staff. The score includes various musical notations such as notes, rests, and slurs.

170

S 1  
*pp*  
an - gels

S 2  
fly fly fly an - gels

A 1  
fly fly fly an - gels

A 2  
for an - gels to fly, to fly,

Detailed description: This block contains the musical score for measures 170 through 174. It features the same four vocal staves as the previous block. The lyrics are: S 1: "an - gels"; S 2: "fly fly fly an - gels"; A 1: "fly fly fly an - gels"; A 2: "for an - gels to fly, to fly,". A dynamic marking of *pp* (pianissimo) is placed above the S 1 staff. The score includes various musical notations such as notes, rests, and slurs.



10 C Instrument

# The A Team

- Ed Sheeran -

Words and Music by Ed Sheeran  
Original Key A Major  
Arranged by Hans Kaldeway

♩ = 168  
Intro

Verse 1 Chorus 1

8 8 4 4 9 7

Interlude 1

41 Verse 2 Chorus 2

16 7 5 8 3 5

86

Interlude 2 Bridge

8 3 4 4 7 16

Chorus 3

129 Interlude 3

15 *mp*  
*colla voce*

149

155

*mp*

Coda

161

168

174

4

© www.ChorusOnline.com / 0031 (0)6-41577756





12 Eb Instrument

# The A Team

- Ed Sheeran -

Words and Music by Ed Sheeran  
Original Key A Major  
Arranged by Hans Kaldeway

♩ = 168  
Intro

Verse 1 Chorus 1

Interlude 1

41 Verse 2 Chorus 2

86 Interlude 2 Bridge

Chorus 3

129 Interlude 3

149

155

Coda

161

168

174

# The A Team

- Ed Sheeran -



Words and Music by Ed Sheeran  
Original Key A Major  
Arranged by Hans Kaldeway

♩ = 168  
*Intro*

B

F#/A# G#m7

*Verse 1*

Eadd9

B

B

F#/A# G#m7

Eadd9

B

F#/A#

© www.ChorusOnline.com / 0031 (0)6-4157756

46 Eadd9 B G#m7 Eadd9

51 B G#m7 Eadd9 B

56 F#add11 G#m9 E6\_9 B

61 Verse 2  
G#m9 E6\_9 B B

66 F#/A# G#m7 Eadd9

14 Piano Solo Moderated

chorus<sup>®</sup>  
online

# The A Team

- Ed Sheeran -

Words and Music by Ed Sheeran  
Original Key A Major  
Arranged by Hans Kaldeway

♩ = 168

Intro

B

F#/a#

*mp*

G#m7

Eadd9

B

Verse 1

B

5

F#/a# G#m7

Eadd9

10

B

15

© www.ChorusOnline.com / 0031 (0)6-41577756

45 *G#m7* *Eadd9* *B* *G#m7*

50 *Eadd9* *B* *G#m7* *Eadd9*

55 *B* *F#add11* *G#m9* *E6 9* *B*

60 *G#m9* *E6 9* *B*

Verse 2

65 *B* *F#/a#* *G#m7*

# The A Team

- Ed Sheeran -

Words and Music by Ed Sheeran  
Original Key  
Arranged by Hans Kaldewey

♩ = 168

Intro

B F#/A# G#m7 Eadd9

*No guitar: play small notes*

Verse 1

B B F#/A#

7

G#m7 Eadd9 B

13

F#/A# G#m7 Eadd9 B

19

Play always

G#m7(9) G#m7 E9<sup>6</sup> B G#m7(9) G#m7 E9<sup>6</sup> B

57

mp

Verse 2

B F#/b F#/A# G#m7 Eadd9 B

65

Bmaj7 B F#/A# G#m7 Eadd9 B

73

Chorus 2

C#m7 E B

81

F# C#m7

86

E B F#

91



16 Synthesizer

# The A Team

- Ed Sheeran -

Words and Music by Ed Sheeran  
Original Key  
Arranged by Hans Kaldeway

♩ = 168

Intro

Verse 1

Chorus 1

Interlude 1

	8	16	16	24

Verse 2

65 *Strings*

73

Chorus 2

81

© www.ChorusOnline.com / 0031 (0)6-4157756



17 Guitar

# The A Team

- Ed Sheeran -

Words and Music by Ed Sheeran  
Original Key A Major  
Arranged by Hans Kaldewey

♩ = 168  
Capo on 2nd fret

The notated guitar part is meant as a suggestion.  
Feel free to make up your own accompaniment,  
in a fingerpicking style.

**A** *Intro* **E/G# F#m7**

**Verse 1**

**Dadd9 A A**

**E/G# F#m7 Dadd9 A**

**E/G# F#m7 Dadd9 A**

**Chorus 1**

**Bm7 D**

**A E/G# Bm7**

**D A**

© www.ChorusOnline.com / 0031 (0)6-41577756

86 E Bm7

91 D A E

*Interlude 2*

96 F#m D A

101 F#m D A F#m

106 D A F#m D

*Bridge*

111 A Eadd11 Bm7 Dadd9

116 F#m7 A

121 Bm7 Dadd9 F#m

*Chorus 3*

126 D A Bm7 D A



18 Bass Guitar

# The A Team

- Ed Sheeran -

Words and Music by Ed Sheeran  
Original Key A Major  
Arranged by Hans Kaldewey

♩ = 168  
*Intro*

*Verse 1*

*Chorus 1*

C#m7  
*mp*

E

8 16

29

B F#/A# C#m7

35

E B F#/A#

*Interlude 1*

41

G#m E B G#m E

47

B G#m E B

53

G#m B F#add11 G#m7(9) G#m7 E9<sup>6</sup>

59

B G#m7(9) G#m7 E9<sup>6</sup> B

© www.ChorusOnline.com / 0031 (0)6-41577756

119 B C#m7 Eadd9

125 F#/G# G#m7 E B

*Chorus 3*

137 C#m7 E B F#

*Interlude 3*

145 F#/g# G#m7 F#/e Emaj7 F#/b B F#/b G#m7/b

157 F#/g# G#m7 F#/e Emaj7 F#/b B F# B/f#

*Coda*

F#/g# G#m7 F#/e Emaj7

163 F#/b B F#/b G#m7/b F#/g# G#m7 F#/e Emaj7 F#/b B

168 F#/b G#m7/b F#/g# G#m7 F#/e Emaj7 F#/b B F#/b G#m7/b

*p* *decresc.*

173 F#/g# G#m7 F#/e Emaj7 F#/b B



19 Drum Set

# The A Team

- Ed Sheeran -

Words and Music by Ed Sheeran  
Original Key  
Arranged by Hans Kaldewey

♩ = 168  
Intro

Verse 1

4 *p* > > > >

brushes

11

Chorus 1

21

31

Interlude 1

41

51

Verse 2

61

www.ChorusOnline.com / 0031 (0)6-41577756

# The A Team

- Ed Sheeran -



Words and Music by Ed Sheeran  
Original Key  
Arranged by Hans Kaldeway

♩ = 168  
Intro

A

E/G#



F#m7

Dadd9

A



## Verse 1

A

E/G#



White lips, \_\_\_ pale face, \_\_\_ breath-ing in \_\_\_ snow - flakes.

F#m7

Dadd9

A



\_\_\_ Burnt lungs, \_\_\_ sour taste. \_\_\_ Light's gone,

E/G#

F#m7



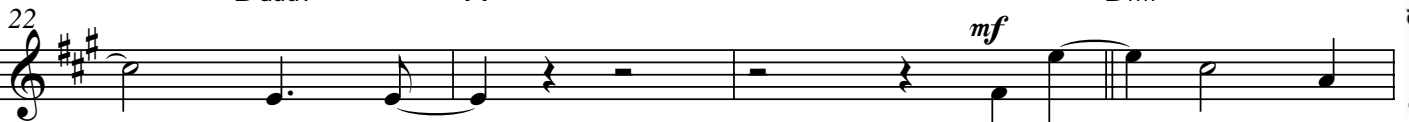
\_\_\_ day's end, \_\_\_ strug- gl - ing \_\_\_ to pay rent. \_\_\_ Long nights,

Dadd9

A

## Chorus 1

Bm7



\_\_\_ strange men. \_\_\_ And they say she's

54 *A* *Eadd11* *F#m7(9)* *F#m7*

— out - side \_\_\_\_\_ for an - - - gels to fly \_\_\_\_\_

58 *D9* *A* *F#m7(9)* *F#m7*

for an - - - gels \_\_\_\_\_ to fly \_\_\_\_\_

*Verse 2*

62 *D9* *A* *A* *E/a* *mp*

— Ripped gloves, \_\_\_\_\_ rain - coat,

67 *E/G#* *F#m7* *Dadd9*

— tried to swim \_\_\_\_\_ and stay a - float. \_\_\_\_\_ Dry \_\_\_\_\_ house, \_\_\_\_\_ wet clothes.

71 *A* *A* *A* *A* *A* *A*

— Loose change, \_\_\_\_\_ bank notes, \_\_\_\_\_ wea - ry eyed,

76 *E/G#* *F#m7* *Dadd9* *A*

— dry \_\_\_\_\_ throat, \_\_\_\_\_ call \_\_\_\_\_ girl, \_\_\_\_\_ no phone. \_\_\_\_\_

*Chorus 2*

80 *Bm7* *D* *mf*

And they say she's in the class A \_\_\_\_\_ team,

# The A Team

- Ed Sheeran -



Words and Music by Ed Sheeran  
Original Key A Major  
Arranged by Hans Kaldeway

♩ = 168  
Intro

B

F#/A#



G#m7

Eadd9

B



## Verse 1

B

*mp*

F#/A#



White lips, \_\_\_ pale face, \_\_\_ breath-ing in \_\_\_ snow - flakes.

G#m7

Eadd9

B



\_\_\_ Burnt lungs, \_\_\_ sour taste. \_\_\_ Light's gone,

F#/A#

G#m7



\_\_\_ day's end, \_\_\_ strug-gl - ing \_\_\_ to pay rent. \_\_\_ Long nights,

Eadd9

B

## Chorus 1

C#m7

*mf*



\_\_\_ strange men. \_\_\_ And they say she's

54 B F#add11 G#m7(9) G#m7

— out - side — — — — — for an - - - gels to fly — — — — —

58 E<sup>6</sup><sub>9</sub> B G#m7(9) G#m7

for an - - - gels — — — — — to fly — — — — —

Verse 2

62 E<sup>6</sup><sub>9</sub> B B F#/b

— — — — — Ripped gloves, — — — — — rain - coat,

67 F#/A# G#m7 Eadd9

— — — — — tried to swim — — — — — and stay a - float. — — — — — Dry house, — — — — — wet clothes.

71 B Bmaj7 B

— — — — — Loose change, — — — — — bank notes, — — — — — wea - ry eyed,

76 F#/A# G#m7 Eadd9 B

— — — — — dry — — — — — throat, — — — — — call — — — — — girl, — — — — — no phone. — — — — —

Chorus 2

80 C#m7 E

And they say she's in the class A — — — — — team,



21 Empty Paper

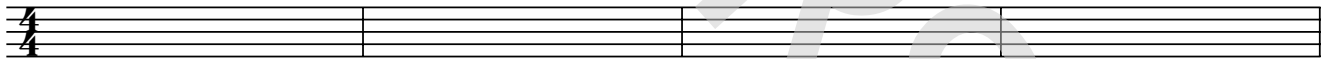
# The A Team

- Ed Sheeran -

*Words and Music by Ed Sheeran  
Original Key  
Arranged by Hans Kaldewey*

♩ = 168

*Intro*

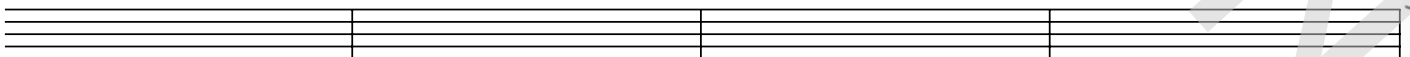


5

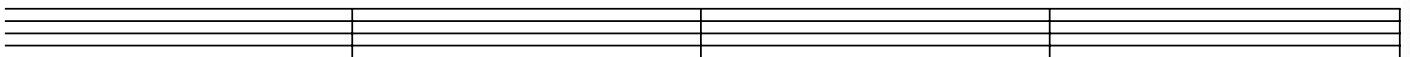


*Verse 1*

9

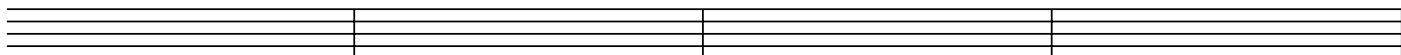


13

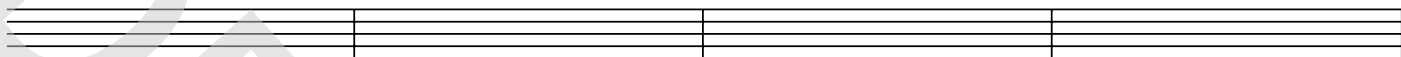


© www.ChorusOnline.com / 0031 (0)6-4157756

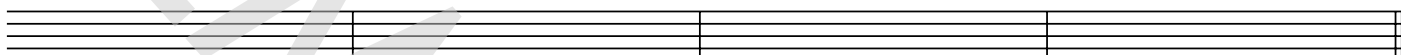
53



57



61

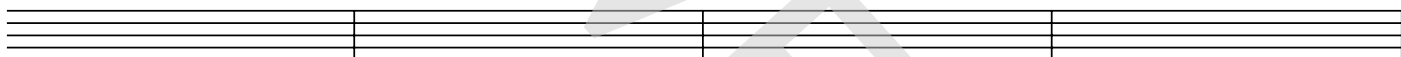


*Verse 2*

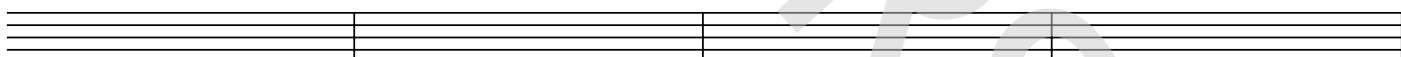
65



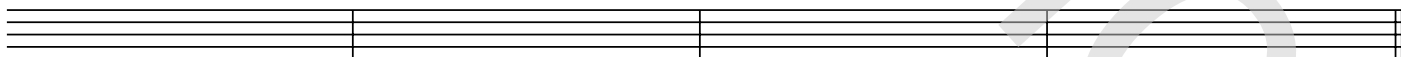
69



73

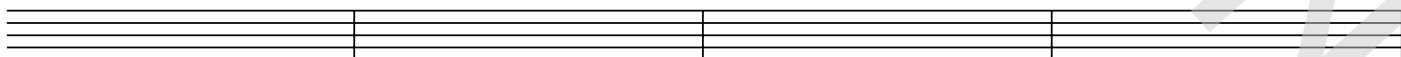


77

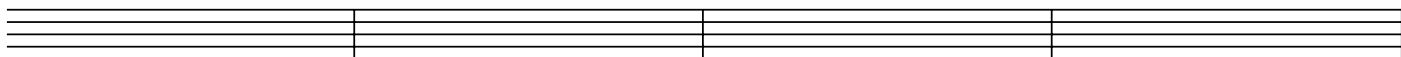


*Chorus 2*

81



85



# The A Team

- Ed Sheeran -

*Words and Music by Ed Sheeran  
Original Key  
Arranged by Hans Kaldeway*

## Intro

## Verse 1

White lips, pale face, breathing in snowflakes.  
Burnt lungs, sour taste.  
Light's gone, day's end, struggling to pay rent.  
Long nights, strange men

## Chorus1

And they say she's in the class A team,  
stuck in her daydream, been this way since eighteen,  
but lately her face seems, slowly sinking, wasting,  
crumbling like pastries, and they scream,  
the worst things in life come free to us,  
'cause we're just

## Interlude 1

Under the upper hand, and go mad for a couple grams  
and she don't want to go outside tonight.  
And in the pipe she flies to the motherland,  
or sells love to another man, It's too cold outside  
for angels to fly (2x)

## Verse 2

Ripped gloves, rain coat, tried to swim and stay afloat.  
Dry house, wet clothes.  
Loose change, bank notes, weary-eyed, dry throat,  
call girl, no phone.

## Chorus 2

## Interlude 2

## Bridge

An angel will die, covered in white, closed eye  
and hoping for a better life.  
This time, we'll fade out tonight, straight down the line.

## Chorus 3

## Interlude 3

## Coda

For angels to fly (3x) to fly, to fly  
Or angels to die