



Hard to say I'm sorry SSAATB

Pag.

02	Full score combo C instrument
07	Full score combo Bb instrument
12	Full score combo Eb instrument
17	Full score combo 4 extra staves
24	Full score small combo
31	Full score small combo 2 extra staves
41	Full score vocals (SSAATB) piano advanced
46	Full score vocals (SSAATB) piano moderated
51	Vocals (SSAATB)
56	C instrument
57	Bb instrument
58	Eb instrument
59	Piano advanced
62	Piano moderated
65	Synthesizer
67	Guitar
69	Bassguitar
71	Drumkit
73	Leadsheet in E (melody, lyrics, chords) orig. Key
76	Leadsheet in G (melody, lyrics, chords)
79	Empty paper
81	Lyrics



SATB Combo C

Hard to Say I'm Sorry

Words and Music by David Foster and Peter Cetera
Arranged by Dirk Kokx
Original Key E major



Intro Steady, with an inner drive

Verse 1 *mf*

Soprano
Alto
Tenor
Bass

E - very - bo - dy needs a li - ttle time a - way

C Instr. *mf*

G C/e D/f# B/d# E_m A/c# D_{sus4} D G G

Piano Adv. *mf*

Synthesizer *mp* Strings

Guitar

Bass Guitar *mf*

Drum Set

Hard to Say I'm Sorry 3

SATB Combo C

Verse 2

24

S
and done You're just a part of me_ I can't let go
Could-n't stand to be kept a-way just for the day from your bo - dy.

A
and done You're just a part of me_ I can't let go
Could-n't stand to be kept a-way just for the day from your bo - dy.

T
and done You're just a part of me_ I can't let go
Could-n't stand to be kept a-way just for the day from your bo - dy.

B
done You're just a part of me_ I can't let go
Could-n't stand to be kept a-way just for the day from your bo - dy.

C
D/f# B/d# Em A/C# Dsus4 D Dsus4 D G Bm7 C C D Em D

P.A.
Synth

Gtr.
24
Chorus - Delay / fingerpicking

Bass

D. S.
mf

32

S
Would-n't want to be swept a-way, far a-way from the one that I love Hold me now It's hard for me to say I'm sor-ry I just want you to know

A
Would-n't want to be swept a-way, far a-way from the one that I love Hold me now It's hard for me to say I'm sor-ry I just want you to know

T
Would-n't want to be swept a-way, Far from the one that I love Hold me now It's hard for me to say I'm sor-ry I just want you to know

B
Would-n't want to be swept a-way, Far from the one that I love Hold me now It's hard for me to say I'm sor-ry I just want you to know

C
Shaker
G Bm7 C C D Em D Em Am Dsus4 D7 G Em Am7

P.A.
Synth

Gtr.
32

Bass

D. S.

Hard to Say I'm Sorry 5

SATB Combo C

Chorus 3

52 *f*

S Af-ter all... that we've been through I will make it up to you I pro-mise to.

A Af-ter all... that we've been through I will make it up to you I pro-mise to.

T Af-ter all... that we've been through I will make it up to you I pro-mise to.

B Af-ter all... that we've been through I will make it up to you I pro-mise to.

C

P.A. *f* B \flat E \flat /g F/a D/f \sharp Gm C/e F_{sus4} FF_{sus4}/g F/a B \flat E \flat /g F/a D/f \sharp Gm C/e

Synth

Gr. 52 *f* Distortion *ff*

Bass *f*

D.S. *f*

Coda

59

S You are gon-na be... the lu-cy one... oo

A oo oo

T doo doo... doo doo oo doo doo doo doo

B doo doo... doo doo oo doo doo doo doo

C *f*

P.A. F_{sus4} F F_{sus4}/g F/a B \flat E \flat /g F/a D/f \sharp Gm C/e \flat /eD_{7sus4} D G \flat o \flat 2 *mf*

Synth

Gr. 59 *f*

Bass

D.S.



SATB Combo Bb

Hard to Say I'm Sorry

Words and Music by David Foster and Peter Cetera

Arranged by Dirk Kokx

Original Key E major

DEMO

VERSE 1

Intro Steady, with an inner drive

Verse 1 *mf*

Soprano: E - very - bo - dy needs a li - ttle time a - way

Alto: -

Tenor: -

Bass: -

Bb Instr. *mf*

Piano Adv. *mf*

Chords: G C/e D/f# B/d# Em A/C# Dsus4 D G G

Strings *mp*

Guitar

Bass Guitar *mf*

Drum Set

Hard to Say I'm Sorry 3

SATB Combo Bb

Verse 2

24

S: ...and done... You're just... a part... of me I can't... let go
 A: ...and done... You're just... a part... of me I can't... let go
 T: ...and done... You're just... a part... of me I can't... let go
 B: ...done... You're just... a part... of me I can't... let go

... Could-n't stand to be kept a-way... just for the day... from your bo - dy.

D/f# B/d# Em A/C# Dsus4 D Dsus4 D G Bm7 C C D Em D

Synth

Gtr. 24 Chorus - Delay / fingerpicking

Bass

D.S. mf

32

S: Would-n't want to be swept a-way, far a-way from the one that I love Hold me now It's hard for me to say I'm sor-ry I just want you to know
 A: Would-n't want to be swept a-way, far a-way from the one that I love Hold me now It's hard for me to say I'm sor-ry I just want you to know
 T: Would-n't want to be swept a-way, Far from the one that I love Hold me now It's hard for me to say I'm sor-ry I just want you to know
 B: Would-n't want to be swept a-way, Far from the one that I love Hold me now It's hard for me to say I'm sor-ry I just want you to know

Shaker

G Bm7 C C D Em D Em Am Dsus4 D7 G Em Am7

Synth

Gtr. 32

Bass

D.S.

Hard to Say I'm Sorry 5

SATB Combo Bb

Chorus 3

S
A
T
B

f Af-ter all_ that we've_ been through I will make it up to you I pro - mise to.

Bb

P.A.
Bb E^b/g F/a D/f# Gm C/e F^{sus4} F^{sus4}/g F/a Bb E^b/g F/a D/f# Gm C/e

Synth

52
Gtr. *f* Distortion *ff*

Bass *f*

D.S. *f*

Coda

S
A
T
B

You are gon-na be_ the lu - cky one_ oo

oo doo doo_ doo oo doo doo doo doo doo

oo doo doo_ doo oo doo doo doo doo

Bb

P.A.
F^{sus4} F F^{sus4}/g F/a Bb^f E^b/g F/a D/f# Gm C/e F⁹/e D^{7sus4} D Gadd2

Synth

59
Gtr. *f*

Bass

D.S.



SATB Combo Eb

Hard to Say I'm Sorry

Words and Music by David Foster and Peter Cetera

Arranged by Dirk Kokx

Original Key E major



Intro Steady, with an inner drive

Verse 1 *mf*

Soprano: E - very - bo - dy needs a li - ttle time a - way

Alto: -

Tenor: -

Bass: -

Eb Instr. *mf*

Piano Adv. *mf*

Chords: G C/e D/f# B/d# E_m A/C# D_{sus4} D G G

Synthesizer *mp* **Strings**

Guitar

Bass Guitar *mf*

Drum Set

© www.ChorusOnline.com / 0031 (0) 6 - 41 57 77 56



Hard to Say I'm Sorry 3

SATB Combo Eb

Verse 2

24

S: ...and done. You're just a part of me I can't let go. Could-n't stand to be kept a-way just for the day from your bo - dy.

A: ...and done. You're just a part of me I can't let go. Could-n't stand to be kept a-way just for the day from your bo - dy.

T: ...and done. You're just a part of me I can't let go. Could-n't stand to be kept a-way just for the day from your bo - dy.

B: ...done. You're just a part of me I can't let go. Could-n't stand to be kept a-way just for the day from your bo - dy.

P.A. Chords: D/f# B/d# Em A/C# Dsus4 D Dsus4 D G Bm7 C C D Em D

Synth

Gtr. 24 Chorus - Delay / fingerpicking

Bass

D.S. mf

32

S: Would-n't want to be swept a-way, far a-way from the one that I love Hold me now It's hard for me to say I'm sor-ry I just want you to know

A: Would-n't want to be swept a-way, far a-way from the one that I love Hold me now It's hard for me to say I'm sor-ry I just want you to know

T: Would-n't want to be swept a-way, Far from the one that I love Hold me now It's hard for me to say I'm sor-ry I just want you to know

B: Would-n't want to be swept a-way, Far from the one that I love Hold me now It's hard for me to say I'm sor-ry I just want you to know

Eb Shaker

P.A. Chords: G Bm7 C C D Em D Em Am Dsus4 D7 G Em Am7

Synth

Gtr. 32

Bass

D.S.

Hard to Say I'm Sorry 5

SATB Combo Eb

Chorus 3

S
A
T
B

Af - ter all _ that we've _ been through I will make it up to you I pro - mise to.

Eb

P.A.
Synth

Gr.
Distortion

Bass

D.S.

f *ff*

B \flat E \flat /g F/a D/f \sharp Gm C/e F $_{sus4}$ F $_{sus4}$ /g F/a B \flat E \flat /g F/a D/f \sharp Gm C/e

Coda

S
A
T
B

You are gon-na be _ the lu - cky one _ oo

oo oo

doo doo _ doo doo oo doo doo doo doo doo

doo doo _ doo doo oo doo doo doo doo doo

Eb

P.A.
Synth

Gr.

Bass

D.S.

f *mf*

F $_{sus4}$ F F $_{sus4}$ /g F/a B \flat E \flat /g F/a D/f \sharp Gm C/e F $^{\flat 9}$ /e D $^{\flat 7sus4}$ D Gadd2

SATB 4 extra staves

Hard to Say I'm Sorry

Words and Music by David Foster and Peter Cetera

Arranged by Dirk Kokx

Original Key E major

mp Steady, with an inner drive

mp *less 1*

E-very-bo-dy needs a li-ttle time a-way — I've heard you say — from each ot - her E-ven lo-vers need a ho-li-day —

from each ot - her *mp* from each ot - her *mp* from each ot - her *mp*

1 2 3 4

G C/e D/F# B/d# Em A/C# Dsus4 D G G Bm7 C C D Em D G Bm7

Piano Advx *mp*

Strings *mp*

Guitar *mp*

Bass Guitar *mp*

Drum Set *mp*

Soprano

Alto

Tenor

Bass

Hard to Say I'm Sorry 3

SATB 4 extra staves

Verse 2

22

8

Chorus - Delay / fingerpicking

mf

Chords: D_{sus4} B_{sus4} D₇ G C/e D/f# B/d# Em A/C# D_{sus4} D D_{sus4} D G Bm7 C C D Em D

Staff S: - mise to And af-ter all that's been said and done You're just a part of me I can't let go

Staff A: - mise to, yes I do. all that's been said and done You're just a part of me I can't let go

Staff T: - mise to, yes I do. all that's been said and done You're just a part of me I can't let go

Staff B: - mise to, yes I do. all that's been said and done You're just a part of me I can't let go

Staff 1: Couldn't stand to be kept a-way just for the day from your bo - dy.

Staff 2: Couldn't stand to be kept a-way just for the day from your bo - dy.

Staff 3: Couldn't stand to be kept a-way just for the day from your bo - dy.

Staff 4: Couldn't stand to be kept a-way just for the day from your bo - dy.

Hard to Say I'm Sorry 5

SATB 4 extra staves

Chorus 2

S real-ly want to tell you I'm sor - ry I could ne-ver let you go Af-ter all that we've been through I will make it up to you I pro - mise to, And af-ter all that's been said

A real-ly want to tell you I'm sor - ry I could ne-ver let you go Af-ter all that we've been through I will make it up to you I pro - mise to, yes I do, all that's been said

T real-ly want to tell you I'm sor - ry I could ne-ver let you go Af-ter all that we've been through I will make it up to you I pro - mise to, yes I do, all that's been said

B — I real-ly want to tell I could ne-ver let you go Af-ter all that we've been through I will make it up to you I pro - mise to, yes I do, all that's been said

1
2
3
4

P/A D_{sus4} D_7 G E_m A_m7 D_{7sus4} D G C/e $D/f\sharp$ $B/d\sharp$ E_m $A/c\sharp$ D_{sus4} $D_{sus4}B/f\sharp$ G C/e

Smith *mf*

Chtr. *mf*

Bass *mf*

D. S. *small/pil*



SATB small Combo

Hard to Say I'm Sorry

Words and Music by David Foster and Peter Cetera
Arranged by Dirk Kokx
Original Key E major

DEMO

VERSION

Chorus

Intro Steady, with an inner drive

Soprano

Alto

Tenor

Bass

Piano Adv. *mf*

Guitar

Bass Guitar *mf*

Drum Set

G C/e D/f# B/d# Em A/C# D_{sus4} D G

© www.ChorusOnline.com / 0031 (0) 6 - 41 57 77 56

Hard to Say I'm Sorry 3

SATB small Combo

Chorus 1

18

S Af - ter all ___ that we've been through ___ I will make it up to you ___ I pro - mise to.

A Af - ter all ___ that we've been through ___ I will make it up to you ___ I pro - mise to. yes I

T Af - ter all ___ that we've been through ___ I will make it up to you ___ I pro - mise to. yes I

B Af - ter all ___ that we've been through ___ I will make it up to you ___ I pro - mise to. yes I

P.A. D_{7sus4} D G C/e $D/f\#$ $B/d\#$ Em $A/C\#$ D_{sus4} D_{sus4} $D/e/f\#$

Gr. 18

Bass

D. S.

23

S And af - ter all that's been said ___ and done ___ You're just ___ a part ___ of me ___ I can't ___ let go

A do. all that's been said ___ and done ___ You're just ___ a part ___ of me ___ I can't ___ let go

T do. all that's been said ___ and done ___ You're just ___ a part ___ of me ___ I can't let go

B do. all that's been said ___ done ___ You're just ___ a part ___ of me ___ I can't let go

P.A. G C/e $D/f\#$ $B/d\#$ Em $A/C\#$ D_{sus4} D D_{sus4} D

Gr. 23

Bass

D. S.

Hard to Say I'm Sorry 5

SATB small Combo

38 oo ba - by

S I just want you to know Hold me now I real-ly want to tell you I'm sor - ry

A I just want you to know Hold me now I real-ly want to tell you I'm sor - ry

T I just want you to know Hold me now I real-ly want to tell you I'm sor - ry

B I just want you to know Hold me Just hold me now. I real-ly want to

Em Am7 D7sus4 D Em Am Dsus4 D7 G

P.A.

Gtr. 38

Bass

D. S.

42 **Chorus 2**

S I could ne-ver let you go Af - ter all that we've been through I will make it up to you I pro -

A I could ne-ver let you go Af - ter all that we've been through I will make it up to you I pro -

T I could ne-ver let you go Af - ter all that we've been through I will make it up to you I pro -

B tell I could ne-ver let you go Af - ter all that we've been through I will make it up to you I pro -

Em Am7 D7sus4 D G C/e D/f# B/d# Em A/C#

P.A.

Gtr. 42

Bass

D. S. *small fill*

Hard to Say I'm Sorry 7

SATB small Combo

Coda

57

S
A
T
B

You are gon-na be the lu -
oo
doo doo - doo doo oo
doo doo - doo doo oo

F/a D/f# Gm C/e F_{sus4} F F_{sus4}/g F/a B^b E^b/g F/a D/f#

P.A.

57

Gtr.
Bass
D. S.

62

S
A
T
B

- cky one oo
oo
doo doo doo doo doo
doo doo doo doo doo

Gm C/e F⁹/e^b D^{7sus4} D G^{add2}

P.A.

62

Gtr.
Bass
D. S.

mf 3

SATB small Combo extra staves

Hard to Say I'm Sorry

Words and Music by David Foster and Peter Cetera
Arranged by Dirk Kokx
Original Key E major

Intro
Steady, with an inner drive

Soprano
Alto
Tenor
Bass

1
2

Piano Adv.
mf

G C/e D/f# B/d# Em A/c# D_{sust} D G G Bm7 C C D Em D

Verse 1
mf

E-very-bo-dy needs a li-ttle time a-way — I've heard you say —
from each of - her
from each of - her
from each of - her

Drum Set
Bass Guitar
Guitar

Chorus 1

Hard to Say I'm Sorry 3
SATB small Combo extra staves

18

S Af - ter all — that we've been through — I will make it up to you I pro - mise to. And af - ter all that's been said

A Af - ter all — that we've been through — I will make it up to you I pro - mise to. yes I do. all that's been said

T Af - ter all — that we've been through — I will make it up to you I pro - mise to. yes I do. all that's been said

B Af - ter all — that we've been through — I will make it up to you I pro - mise to. yes I do. all that's been said

1

2

P.A. D_{7sus4} D G C/e D/\sharp B/d \sharp E m A/c \sharp D_{sus4} D_{sus4}^{\flat} B/d \sharp G C/e

Gtr. $\frac{1}{8}$

Bass $\frac{1}{8}$

D. S.

Hard to Say I'm Sorry 5
SATB small Combo extra staves

30

S — from your bo - dy. Would-n't want to be swept a-way, — far a-way from the one that I love Hold me now It's

A — from your bo - dy. Would-n't want to be swept a-way, — far a-way from the one that I love Hold me now It's

T — from your bo - dy. Would-n't want to be swept a-way, — Far from the one that I love Hold me now It's

B — from your bo - dy. Would-n't want to be swept a-way, — Far from the one that I love Hold me now It's

1

2

C C D Em D G Bm7 C C D Em D Em Am

Gtr. 30

Bass 8

D. S.

Chorus 2

Hard to Say I'm Sorry 7
SATB small Combo extra staves

42

S I could ne-ver let you go Af-ter all that we've been through I will make it up to you I pro-mise to.

A I could ne-ver let you go Af-ter all that we've been through I will make it up to you I pro-mise to. yes I

T I could ne-ver let you go Af-ter all that we've been through I will make it up to you I pro-mise to. yes I

B tell I could ne-ver let you go Af-ter all that we've been through I will make it up to you I pro-mise to. yes I

1

2

P.A. Em Am7 D7sus4 D G C/e D/# B/d# Em A/c# Dsus4 D#sus4 B/#

Gtr. 42 8

Bass

D.S. *small fill*

Hard to Say I'm Sorry 9
SATB small Combo extra staves

54

S
to you I pro - mise to.

A
to you I pro - mise to.

T
to you I pro - mise to.

B
to you I pro - mise to.

1
2

Gm C/e F sus4 F F sus4/g F/a B_b E^b/g F/a D/# Gm C/e F sus4 F F sus4/g F/a

Gtr. 54 8 *ff* 3

Bass

D. S.



SATB Piano advanced

Hard to Say I'm Sorry

Words and Music by David Foster and Peter Cetera
Arranged by Dirk Kokx
Original Key E major

Intro

Steady, with an inner drive

Soprano

Alto

Tenor

Bass

Piano Adv.

G C/e D/f# B/d# Em A/C# Dsus4 D G

Verse 1

S

A

T

B

P.A.

mf

E-very-bo-dy needs a li-ttle time a-way — I've heard you say — from each ot - her E-ven lo-vers need a ho-li-day

mf

from each ot - her oo

mf

from each ot - her oo

mf

oo

G Bm7 C C D Em D G

Hard to Say I'm Sorry 3

SATB Piano advanced

Verse 2

28

S
A
T
B
P.A

Could-n't stand to be kept a-way — just for the day — from your bo - dy. Would-n't want to be swept a-way,

Could-n't stand to be kept a-way — just for the day — from your bo - dy. Would-n't want to be swept a-way,

Could-n't stand to be kept a-way — just for the day — from your bo - dy. Would-n't want to be swept a-way,

Could-n't stand to be kept a-way — just for the day — from your bo - dy. Would-n't want to be swept a-way,

G Bm7 C C D Em D G

33

S
A
T
B
P.A

— far a-way from the one that I love Hold me now It's hard for me to say I'm sor-ry I just want you to know

— far a-way from the one that I love Hold me now It's hard for me to say I'm sor-ry I just want you to know

— Far from the one that I love Hold me now It's hard for me to say I'm sor-ry I just want you to know

— Far from the one that I love Hold me now It's hard for me to say I'm sor-ry I just want you to know

Bm7 C C D Em D Em Am Dsus4 D7 G Em Am7

39

S
A
T
B
P.A

— oo — ba-by Hold me now — I real-ly want to tell you I'm sor-ry I could ne-ver let you go

— oo — ba-by Hold me now — I real-ly want to tell you I'm sor-ry I could ne-ver let you go

— oo — ba-by Hold me now — I real-ly want to tell you I'm sor-ry I could ne-ver let you go

— oo — ba-by Hold me Just hold me now. — I real-ly want to tell I could ne-ver let you go

D7sus4 D Em Am Dsus4 D7 G Em Am7 D7sus4 D

Hard to Say I'm Sorry 5

SATB Piano advanced

Coda

56

S
A
T
B

You are gon-na be__ the lu -
oo
doo doo doo doo oo
doo doo doo doo oo

P.A.

B \flat E \flat /g F/a D/f# Gm C/e F_{sus4} F_{sus4}/g F/a B \flat E \flat /g F/a D/f#

62

S
A
T
B

- cky one__ oo
oo
doo doo doo doo doo
doo doo doo doo doo

P.A.

Gm C/e F⁹/e \flat D_{7sus4} D G_{add2}

mf 3

SATB Piano moderated



Hard to Say I'm Sorry

Words and Music by David Foster and Peter Cetera

Arranged by Dirk Kokx

Original Key E major

Intro Steady, with an inner drive

Soprano

Alto

Tenor

Bass

Piano Mod.

G C/e D/f# B/d# Em A/C# D_{sus4} D G

Verse 1

S

A

T

B

P. M.

E-very-bo-dy needs a li-ttle time a-way ___ I've heard you say ___ from each ot - her E-ven lo-vers need a ho-li-day

from each ot - her oo

from each ot - her oo

oo

G Bm7 C C D Em D G

Hard to Say I'm Sorry 3

SATB Piano moderated

Verse 2

27

S
A
T
B

Could-n't stand to be kept a - way — just for the day — from your bo - dy.

P. M.

D_{sus4} D G Bm7 C C D E_m D

32

S
A
T
B

Would-n't want to be swept a - way, — far a - way from the one that I love Hold me now It's

P. M.

G Bm7 C C D E_m D E_m A_m

37

S
A
T
B

hard for me to say I'm sor - ry I just want you to know oo — ba - by Hold me now I

P. M.

D_{sus4} D7 G E_m A_{m7} D7_{sus4} D E_m A_m

Hard to Say I'm Sorry 5

SATB Piano moderated

Coda

55

S - mise to.

A - mise to. oo

T - mise to. doo doo doo doo

B - mise to. doo doo doo doo

P. M. F_{sus4} F F_{sus4}/g F/a B^b E^b/g F/a $D/f\#$ G_m C/e F_{sus4} F F_{sus4}/g F/a B^b E^b/g

61

S You are gon-na be the lu - cky one oo

A oo

T oo doo doo doo doo

B oo doo doo doo doo

P. M. F/a $D/f\#$ G_m C/e F^9/e^b D^7_{sus4} D G_{add2} *mf*

SATB



Hard to Say I'm Sorry

Words and Music by David Foster and Peter Cetera

Arranged by Dirk Kokx

Original Key E major

Steady, with an inner drive

Intro

Verse 1

mf

Soprano

Alto

Tenor

Bass

E-very-bo-dy needs a li-ttle time a-way — I've heard you say

9

S

A

T

B

from each ot - her E-ven lo-vers need a ho-li-day —

from each ot - her oo

from each ot - her oo

oo

13

S

A

T

B

far a-way from each ot - her Hold me now It's hard for me to say I'm sor-ry

far a-way from each ot - her Hold me now It's hard for me to say I'm sor-ry

from each ot - her Hold me now It's hard for me to say I'm sor-ry

from each ot - her Hold me now It's hard for me to say I'm sor-ry

Hard to Say I'm Sorry 3

SATB

Verse 2

28

S
A
T
B

Could-n't stand to be kept a-way — just for the day — from your bo - dy.

32

S
A
T
B

Would-n't want to be swept a-way, — far a-way from the one that I love

36

S
A
T
B

Hold me now It's hard for me to say I'm sor-ry I just want you to know — oo__ ba-by

Hard to Say I'm Sorry 5

SATB

Chorus 3

50

S *f*
— a part — of me — I can't — let go Af - ter all — that we've — been

A *f*
— a part — of me — I can't — let go Af - ter all — that we've been

T *f*
— a part — of me — I can't let go Af - ter all — that we've — been

B *f*
— a part — of me — I can't let go Af - ter all — that we've been

53

S **3**
through I will make it up to you I pro - mise to.

A **3**
through I will make it up to you I pro - mise to.

T **3**
through I will make it up to you I pro - mise to. doo doo doo

B **3**
through I will make it up to you I pro - mise to. doo doo doo

Coda

60

S
You are gon-na be the lu - cky one oo —

A
oo — oo —

T
doo — oo — doo doo doo doo doo —

B
doo — oo — doo doo doo doo doo —

Hard to Say I'm Sorry

Words and Music by David Foster and Peter Cetera

Arranged by Dirk Kokx

Original Key E major

Intro Steady, with an inner drive

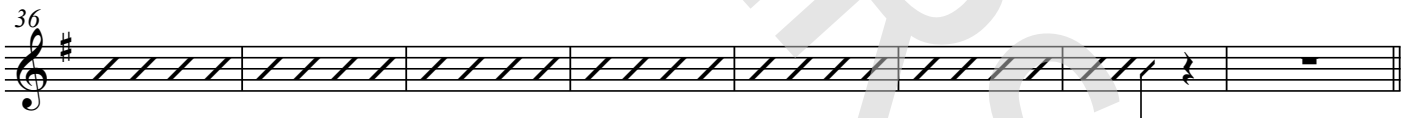
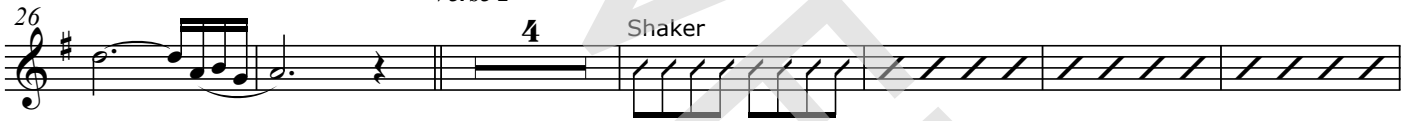
Verse 1

Chorus 1



Verse 2

Shaker



Chorus 2



Chorus 3



Coda





Bb Instrument

Hard to Say I'm Sorry

Words and Music by David Foster and Peter Cetera
Arranged by Dirk Kokx
Original Key E major

Intro Steady, with an inner drive

Verse 1

Chorus 1

Musical notation for the Intro and Verse 1. The Intro starts at measure 5 and ends at measure 11. The Verse 1 section begins at measure 11. The key signature is E major (two sharps) and the time signature is 4/4. Dynamics include *mf* and accents.

Verse 2

Shaker

Chorus 2

Musical notation for Verse 2 and Chorus 2. Verse 2 starts at measure 28 and includes a 'Shaker' section. Chorus 2 starts at measure 39. Dynamics include *mf* and *f*.

Chorus 3

Musical notation for Chorus 3, starting at measure 52. It features a triplet of eighth notes. Dynamics include *f*.

Coda

Musical notation for the Coda, starting at measure 60. It ends with a double bar line and a repeat sign. Dynamics include *f*.

Hard to Say I'm Sorry

Words and Music by David Foster and Peter Cetera
Arranged by Dirk Kokx
Original Key E major

Steady, with an inner drive

Intro G C/e D/f# B/d# Em A/c#

Verse 1 D_{sus4} D G G B_{m7} C C D

10 Em D G B_{m7} C C D Em D

Chorus 1 15 Em Am G/d D7 G Em Am7 D7sus4 D G C/e

Hard to Say I'm Sorry

Words and Music by David Foster and Peter Cetera

Arranged by Dirk Kokx

Original Key E major

Steady, with an inner drive

Intro G C/e D/f# B/d# Em A/c#

Verse 1

4 D_{sus4} D G G B_{m7} C CD

10 Em D G B_{m7} C CD Em D Em Am

Chorus 1

16 G/d D7 G Em Am7 D7sus4 D G C/e D/f# B/d#

Hard to Say I'm Sorry

Words and Music by David Foster and Peter Cetera
Arranged by Dirk Kokx
Original Key E major

Steady, with an inner drive

Intro

Strings

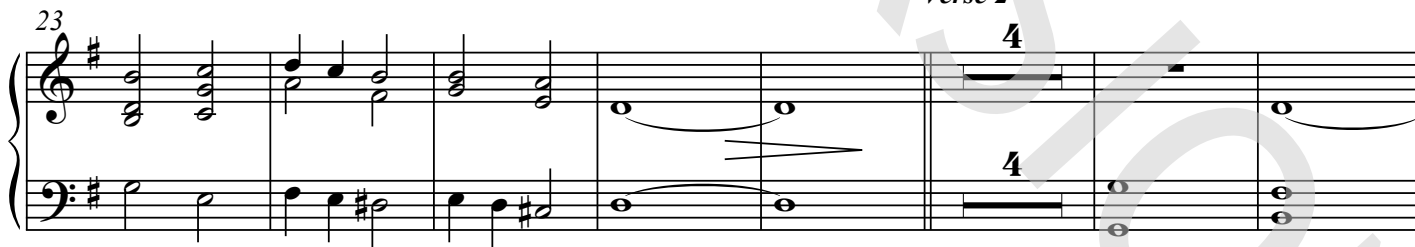
Verse 1



Chorus 1



Verse 2



Guitar

chorus[®]

online

Hard to Say I'm Sorry

Words and Music by David Foster and Peter Cetera

Arranged by Dirk Kokx

Original Key E major

Steady, with an inner drive

Intro

Verse 1

Chorus 1

6 12 9

Verse 2

G Bm7 C C D Em D

28

8 Chorus - Delay / fingerpicking

G Bm7 C C D Em D

32

Em Am D_{sus4} D7 G Em Am7 D_{7sus4} D

36

Em Am D_{sus4} D7 G Em Am7 D_{7sus4} D

40

Chorus 2

G C/e D/f# B/d# Em A/c# D_{sus4} D D_{sus4}/e D/f#

44

G C/e D/f# B/d# Em A/c# D D_{7/c}

48

© www.ChorusOnline.com / 0031 (0) 6 - 41 57 77 56

Hard to Say I'm Sorry

Words and Music by David Foster and Peter Cetera
Arranged by Dirk Kokx
Original Key E major

Steady, with an inner drive

Intro G C/e D/f# B/d# Em A/c# D_{sus4} D Verse 1

15 Em Am G/d D7 G Em Am7 D7_{sus4} D

Chorus 1
19 G C/e D/f# B/d# Em A/c# D_{sus4} D^D_{sus4}/e D/f#

23 G C/e D/f# B/d# Em A/c# D_{sus4} D D_{sus4} D

Verse 2
28 G Bm7 C C D Em D

32 G Bm7 C C D Em D

36 Em Am D_{sus4} D7 G Em Am7 D7_{sus4} D

40 Em Am D_{sus4} D7 G Em Am7 D7_{sus4} D



Drum Set

Hard to Say I'm Sorry

Words and Music by David Foster and Peter Cetera
Arranged by Dirk Kokx
Original Key E major

Hi-Hat Pedal
Hi-Hat opened
Hi-Hat Closed
Snaredrum
Bassdrum
Snare rim (click)
Toms: High 1
High 2
Mid
Low
Ride heavy
Ride light
Ride cup
Claves
Cymbal Crash
Cymbal Splash
Triangle Open
Triangle Closed
Conga High
Conga Low
Quiro
Tambourine
Shakers (Maracas)
Bells

Steady, with an inner drive

Intro

Verse 1

Chorus 1

Verse 2

6 12 9
mf

30

36 *small fill - 1*

Chorus 2

44

Hard to Say I'm Sorry

Words and Music by David Foster and Peter Cetera
Arranged by Dirk Kokx
Original Key E major

Intro Steady, with an inner drive

E A/c# B/d# G#/b# C#m F#/a#

Verse 1

4 B_{sus4} B E E

E-very-bo-dy needs a li-ttle time a-way

8 G#m7 A A B C#m B

I've heard you say from each ot-her

11 E G#m7 A A B

E-ven lo-vers need a ho-li-day far a-way from each

14 C#m B C#m F#m E/b B7 E

ot-her Hold me now It's hard for me to say I'm sor-ry

Chorus 1

17 C#m F#m7 B7sus4 B E A/c#

I just want you to stay Af-ter all that we've been through

Hard to Say I'm Sorry

Words and Music by David Foster and Peter Cetera

Arranged by Dirk Kokx

Original Key E major

Intro Steady, with an inner drive

G C/e D/f# B/d# Em A/c#

Verse 1

4 D_{sus4} D G G

E-very-bo-dy needs a li-ttle time a-way

8 B_{m7} C C D Em D

I've heard you say from each ot - her

11 G B_{m7} C C D

E-ven lo-vers need a ho - li - day far a-way from each

14 Em D Em Am G/d D7 G

ot - her Hold me now It's hard for me to say I'm sor - ry

Chorus 1

17 Em Am7 D7_{sus4} D G C/e

I just want you to stay Af - ter all that we've been through



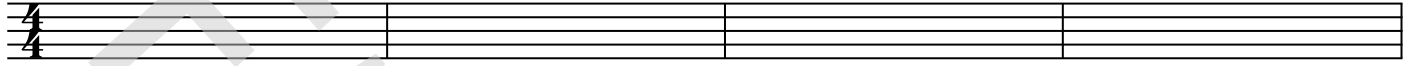
Empty paper

Hard to Say I'm Sorry

Words and Music by David Foster and Peter Cetera
Arranged by Dirk Kokx
Original Key E major

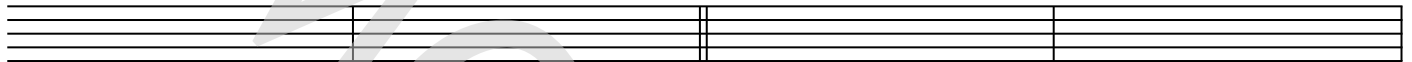
Steady, with an inner drive

Intro



Verse 1

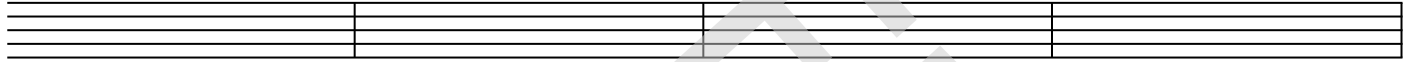
5



9

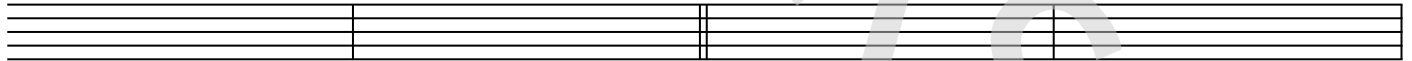


13

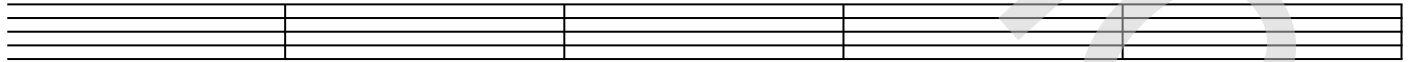


Chorus 1

17

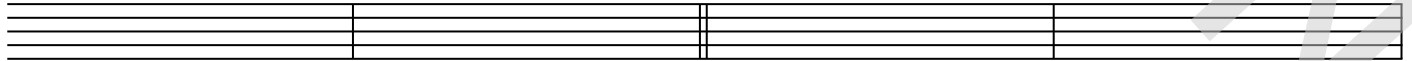


21

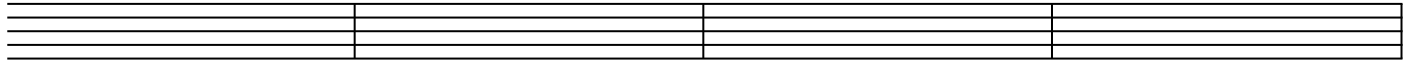


Verse 2

26



30



© www.ChorusOnline.com / 0031 (0) 6 - 41 57 77 56

Hard To Say I'm Sorry

"Everybody needs a little time away,"

I heard her say, "from each other."

"Even lover's need a holiday
far away from each other."

Hold me now.

It's hard for me to say I'm sorry.

I just want you to stay.

After all that we've been through,

I will make it up to you. I promise to.

And after all that's been said and done,

You're just the part of me I can't let go.

Couldn't stand to be kept away

just for the day from your body.

Wouldn't wanna be swept away,

far away from the one that I love.

Hold me now.

It's hard for me to say I'm sorry.

I just want you to know.

Hold me now.

I really want to tell you I'm sorry.

I could never let you go.

After all that we've been through,

I will make it up to you. I promise to.

And after all that's been said and done,

You're just the part of me I can't let go.

After all that we've been through,

I will make it up to you. I promise to.

You are gonna be the lucky one.