



Love yourself – Justin Bieber SSAA

Pag.

02	Full score combo
14	Full score combo 4 extra staves
29	Vocals (SSAA) Piano
44	Vocals (SSAA)
62	Piano
66	Guitar
68	Bassguitar
70	Leadsheet (melody, lyrics, chords)
75	Lyrics



01 SSAA combo

Love Yourself

- Justin Bieber -

Words and Music by Ed Sheeran & Justin Bieber
Arranged by Frank de Vreeze
Original Key E

Pop, Soul ♩ = 100

Verse 1
Finger Snap on 2 & 4

mf

Soprano 1
For all the times___ that you rain___ on my pa - rade. And all the clubs___ you get in___ u - sing my name. You think you broke

Soprano 2

Alto 1

Alto 2

Piano
N.C.
(No guitar: play this piano part)

Guitar
E. Jazz Sound
Damp string on 2 & 4

Bass Guitar
pp

Love Yourself 3
01 SSAA combo

13

S1 *mf*
mo - vin' on — and I think you should be some - thin' I don't wan - na hold back, may - be you should know that. My ma - ma don't

S2 *mf*
mo - vin' on — and I think you should be some - thin' I don't wan - na hold back, may - be you should know that. My ma - ma don't

A1 *pp*
MMM My ma - ma don't

A2 *pp*
MMM My ma - ma don't

P.
P.

Gtr.

Bass

Pre-Chorus 1

17

S1
like you and she likes e - ve - ry - one. — And I ne - ver like to ad - mit that I — was wrong. — And I've been so

S2
like you and she likes e - ve - ry - one. — And I ne - ver like to ad - mit that I — was wrong. — And I've been so

A1
like you and she likes e - ve - ry - one. — And I ne - ver like to ad - mit that I — was wrong. —

A2
like you and she likes e - ve - ry - one. — And I ne - ver like to ad - mit that I — was wrong. —

P.
C#m A5 E5 C#m A5 E5

Gtr.

Bass

Love Yourself 5
01 SSAA combo

Verse 2

31

S1
you should go and love your - self. But when you told me that you ha - ted my friends. The on - ly pro -

S2
you should go and love your - self. But when you told me that you ha - ted my friends. The on - ly pro -

A1
you should go and love your - self. OOH _____

A2
you should go and love your - self. OOH _____

P.
E5 A/b E N.C.

Gtr.

Bass

35

S1
- blem was with you and not them. And ev' - ry time ___ you told me my o - pi - nion was wrong. And tried to make

S2
- blem was with you and not them. And ev' - ry time ___ you told me my o - pi - nion was wrong. And tried to make

A1
OOH _____ OOH _____

A2
OOH _____ OOH _____

P.

Gtr.

Bass

Pre-Chorus 2

47

S1 hold back, may - be you should know that. My ma - ma don't like you and she likes e - ve - ry - one. ___ And I ne - ver

S2 hold back, may - be you should know that. My ma - ma don't like you and she likes e - ve - ry - one. ___ And I ne - ver

A1 MMM My ma - ma don't like you and she likes e - ve - ry - one. ___ And I ne - ver

A2 MMM My ma - ma don't like you and she likes e - ve - ry - one. ___ And I ne - ver

P. C#m A5 E5

Gtr.

Bass

51

S1 like to ad - mit that I ___ was wrong. ___ And I've been so caught up in my job, didn't see what's go - ing on. And now I

S2 like to ad - mit that I ___ was wrong. ___ And I've been so caught up in my job, didn't see what's go - ing on. And now I

A1 like to ad - mit that I ___ was wrong. ___ see what's go - ing on. And now I

A2 like to ad - mit that I ___ was wrong. ___ see what's go - ing on. And now I

P. C#m A5 E5 C#m A5 E5 B5

Gtr.

Bass

Love Yourself 9
01 SSAA combo

Interlude

65

S1
M M M M M M M M M M M - M

S2
M M M M M M M M M M M - M

A1
M - M

A2
M - M

P.
E5 B5 C#5 A5 E5 A/b E

Gtr.

Bass

69

S1
M M M M M M M M M M M For all the times

S2
M M M M M M M M M M M For all the times

A1
M M M M M M M M M M M

A2
M M M M M M M M M M M

P.
E5 B5 C#5 A5 E5 A/b E

Gtr.

Bass

Love Yourself 11
01 SSAA combo

Chorus 3

81

S1 like the way you look that ___ much Oh ba - by you should go and love your - self. And if you

S2 like the way you look that ___ much Oh ba - by you should go and love your - self. And if you

A1 like the way you look that ___ much Oh ba - by you should go and love your - self. And if you

A2 like the way you look that ___ much Oh ba - by you should go and love your - self. And if you

P. E5 B5 C#5 A5 E5 A/b E

Gtr.

Bass

85

S1 think that I'm stil hold - in' ___ on to some - thing you should go and love your - self. Cause if you

S2 think that I'm stil hold - in' ___ on to some - thing you should go and love your - self. Cause if you

A1 think that I'm stil hold - in' ___ on to some - thing you should go and love your - self. Cause if you

A2 think that I'm stil hold - in' ___ on to some - thing you should go and love your - self. Cause if you

P. E5 B5 C#5 A5 E5 A/b

Gtr.

Bass

02 SSAA 4 extra staves

Love Yourself

- Justin Bieber -

Words and Music by Ed Sheeran & Justin Bieber
Arranged by Frank de Vreeze
Original Key E

Pop, Soul $\text{♩} = 100$

Verse 1

Finger Stop on 2 & 4

mf
For all the times that you rain on my parade
And all the clubs you get in u - sing my name
You think you broke my heart oh boy for good - ness

Soprano 1

Soprano 2

Alto 1

Alto 2

1

2

3

4

N.C.
(No guitar play this piano part)

Piano Combo

Guitar

E. Jazz Sound

Dump string on 2 & 4

pp

Bass Guitar

Love Yourself 3

02 SS/AA 4 extra staves

Pre-Chorus 1

1/2

S1 phone up. And Da-by I be mo - vin' on — and I think you should be some - thin' I don't wan - na hold back. may - be you should know that. *mf* My ma - ma don't like you and she likes e - ve - ry - one.

S2 phone up. And Da-by I be mo - vin' on — and I think you should be some - thin' I don't wan - na hold back. may - be you should know that. *mf* My ma - ma don't like you and she likes e - ve - ry - one.

A1 *pp* MMM ———— and I think you should be some - thin' I don't wan - na hold back. may - be you should know that. My ma - ma don't like you and she likes e - ve - ry - one.

A2 *pp* MMM ———— and I think you should be some - thin' I don't wan - na hold back. may - be you should know that. My ma - ma don't like you and she likes e - ve - ry - one.

1

2

3

4

Gtr. 8

Bass

PC.

C#m A5

Chorus 1

25

S1 like the way you look that — much Oh ba - by you should go and love your - self And if you think that I'm still hold - in' — on to some-thing you should go and love your - self

S2 like the way you look that — much Oh ba - by you should go and love your - self And if you think that I'm still hold - in' — on to some-thing you should go and love your - self

A1 like the way you look that — much Oh ba - by you should go and love your - self And if you think that I'm still hold - in' — on to some-thing you should go and love your - self

A2 like the way you look that — much Oh ba - by you should go and love your - self And if you think that I'm still hold - in' — on to some-thing you should go and love your - self

1

2

3

4

PC. E5 B5 C#5 A5 E5 A/b E E5 B5 C#5 A5 E5 A/b

Ch. 8

Bass

38

S1 wrong. And tried to make me for - get where I came from. And I did -n't wan-na write a song cause I did -n't want a -ny-one think - ing I still care I don't but, you still hit my

S2 wrong. And tried to make me for - get where I came from. And I did -n't wan-na write a song cause I did -n't want a -ny-one think - ing I still care I don't but, you still hit my

A1 wrong. And tried to make me for - get where I came from. And I did -n't wan-na write a song cause I did -n't want a -ny-one think - ing I still care I don't but, you still hit my

A2 *pp* OOH OOH OOH OOH *fu* And I did -n't wan-na write a song *did* MMM *fu* And I did -n't wan-na write a song *did* MMM

1 *fu* *did*

2 *fu* *did*

3

4

PC.

Chr. 8

Bass

50

S1 — And I ne-ver like to ad-mit that I — was wrong — And I've been so caught up in my job, didn't see what's go-ing on. And now I know, I'm bet-ter sleep-ing on my own. Cause if you

S2 — And I ne-ver like to ad-mit that I — was wrong — And I've been so caught up in my job, didn't see what's go-ing on. And now I know, I'm bet-ter sleep-ing on my own. Cause if you

A1 — And I ne-ver like to ad-mit that I — was wrong — And I've been so caught up in my job, didn't see what's go-ing on. And now I know, I'm bet-ter sleep-ing on my own. Cause if you

A2 — And I ne-ver like to ad-mit that I — was wrong — And I've been so caught up in my job, didn't see what's go-ing on. And now I know, I'm bet-ter sleep-ing on my own. Cause if you

1

2

3

4

PC. E5 C#m A5 E5 C#m A5 E5 B5 C#m A B5

Ch. 8

Bass

Chorus 3

78

S1
- rable. Was I a fool — to let you break down my walls. Cause if you like the way you look that — much Oh ba - by you should go and love your - self. And if you

S2
- rable. Was I a fool — to let you break down my walls. Cause if you like the way you look that — much Oh ba - by you should go and love your - self. And if you

A1
so low Was I a fool — to let you break down my walls. Cause if you like the way you look that — much Oh ba - by you should go and love your - self. And if you

A2
so low Was I a fool — to let you break down my walls. Cause if you like the way you look that — much Oh ba - by you should go and love your - self. And if you

1
2
3
4

P.C.
E5 B5 C#5 A5 E5 A/b E

Ch.
8

Bass

01

S1 you should go and love your - self - - - Yeah - - - You think That I'm - - - hold - in' on - - - go and love your - self - -

S2 you should go and love your - self - - - think that I'm still hold - in' - - - on to some - thing you should go and love your - self - -

A1 you should go and love your - self - - - And if you think that I'm still hold - in' - - - on to some - thing you should go and love your - self - -

A2 you should go and love your - self - - - And if you think that I'm still hold - in' - - - on to some - thing you should go and love your - self - -

1

2

3

4

E5 A/b E E5 B5 C#5 A5 E5 A/b E5

P.C.

Chr. 8

Bass



03 SSAA Piano Solo

Love Yourself

- Justin Bieber -

Words and Music by Ed Sheeran & Justin Bieber
Arranged by Frank de Vreeze
Original Key E

Pop, Soul ♩ = 100

Verse 1

Finger Snap on 2 & 4

mf

Soprano 1
For all the times ___ that you rain ___ on my pa - rade. And all the clubs ___ you get in u - sing my name.

Soprano 2

Alto 1

Alto 2

Piano Solo
N.C.
(No guitar: play this piano part)

The musical score for Verse 1 is written in E major (three sharps) and 4/4 time. It features five staves: Soprano 1, Soprano 2, Alto 1, Alto 2, and Piano Solo. The Soprano 1 part begins with a melody in the first measure, followed by lyrics. The other vocal parts (Soprano 2, Alto 1, Alto 2) are currently silent, indicated by whole rests. The Piano Solo part starts with a whole rest in the first measure, then provides accompaniment for the rest of the verse. A dynamic marking of *mf* (mezzo-forte) is placed above the first measure of the Soprano 1 staff. The tempo is indicated as 100 beats per minute.

Love Yourself 3
03 SSAA Piano Solo

11

S1
don't but, you still hit my phone up. And ba-by I be mo - vin' on — and I think you

S2
don't but, you still hit my phone up. And ba-by I be mo - vin' on — and I think you

A1
pp

A2
MMM
pp
MMM

P.S.

14

S1
should be some - thin' I don't wan - na hold back, may - be you should know that. My ma - ma don't

S2
should be some - thin' I don't wan - na hold back, may - be you should know that. My ma - ma don't

A1
MMM
My ma - ma don't

A2
MMM
My ma - ma don't

P.S.

mf

Chorus 1

24

S1
sleep-ing on my own. Cause if you like the way you look that much Oh ba-by you should go and love your - self.

S2
sleep-ing on my own. Cause if you like the way you look that much Oh ba-by you should go and love your - self.

A1
sleep-ing on my own. Cause if you like the way you look that much Oh ba-by you should go and love your - self.

A2
sleep-ing on my own. Cause if you like the way you look that much Oh ba-by you should go and love your - self.

B5 E5 B5 C#5 A5 E5 A/b

P.S.

28

S1
And if you think that I'm stil hold - in' ___ on to some-thing you should go and love your - self.

S2
And if you think that I'm stil hold - in' ___ on to some-thing you should go and love your - self.

A1
And if you think that I'm stil hold - in' ___ on to some-thing you should go and love your - self.

A2
And if you think that I'm stil hold - in' ___ on to some-thing you should go and love your - self.

E E5 B5 C#5 A5 E5 A/b

P.S.

38

S1
wrong. And tried to make me for - get where I came from. And I did - n't wan - na

S2
wrong. And tried to make me for - get where I came from. And I did - n't wan - na

A1
OOH And I did - n't wan - na

A2
pp OOH OOH And I did - n't wan - na

P.S.

41

S1
write a song cause I did - n't want a - ny - one think - ing I still care I don't but, you still hit my

S2
write a song cause I did - n't want a - ny - one think - ing I still care I don't but, you still hit my

A1
pp write a song MMM write a song MMM

A2
pp write a song MMM write a song MMM

P.S.

Love Yourself 9
03 SSAA Piano Solo

50

S1
— And I ne - ver like to ad - mit that I — was wrong. — And I've been so

S2
— And I ne - ver like to ad - mit that I — was wrong. — And I've been so

A1
— And I ne - ver like to ad - mit that I — was wrong. —

A2
— And I ne - ver like to ad - mit that I — was wrong. —

P.S.
E5 C#m A5 E5

53

S1
caught up in my job, didn't see what's go - ing on. And now I know, I'm bet - ter sleep - ing on my own. Cause if you

S2
caught up in my job, didn't see what's go - ing on. And now I know, I'm bet - ter sleep - ing on my own. Cause if you

A1
see what's go - ing on. And now I know, I'm bet - ter sleep - ing on my own. Cause if you

A2
see what's go - ing on. And now I know, I'm bet - ter sleep - ing on my own. Cause if you

P.S.
C#m A5 E5 B5 C#m A B5

Interlude

65

S1

S2

A1

A2

P.S.

M M M M M M M M M M M - M

M M M M M M M M M M M - M

E5 B5 C#5 A5 E5 A/b E

69

S1

S2

A1

A2

P.S.

M M M M M M M M M M M

M M M M M M M M M M M

M M M M M M M M M M M

M M M M M M M M M M M

E5 B5 C#5 A5 E5 A/b

78

S1
- rable. Was I a fool — to let you — break down my walls. Cause if you

S2
- rable. Was I a fool — to let you — break down my walls. Cause if you

A1
so low Was I a fool — to let you break down my walls. Cause if you

A2
so low Was I a fool — to let you break down my walls. Cause if you

P.S.

Chorus 3

81

S1
like the way you look that — much Oh ba - by you should go and love your - self.

S2
like the way you look that — much Oh ba - by you should go and love your - self.

A1
like the way you look that — much Oh ba - by you should go and love your - self.

A2
like the way you look that — much Oh ba - by you should go and love your - self.

P.S.
E5 B5 C#5 A5 E5 A/b



04 SSAA

Love Yourself

- Justin Bieber -

Words and Music by Ed Sheeran & Justin Bieber
Arranged by Frank de Vreeze
Original Key E

Pop, Soul ♩ = 100

Verse 1

Finger Snap on 2 & 4

mf

Soprano 1

For all the times ___ that you rain ___ on my pa - rade. And all the clubs

Soprano 2

Alto 1

Alto 2

7

S1
- ing, oh my oh, well I ain't. And I did-n't wan-na

S2
And I did-n't wan-na

A1

A2
MMM

9

S1
write a song cause I did-n't want a-ny-one think-ing I still care I

S2
write a song cause I did-n't want a-ny-one think-ing I still care I

A1

A2
pp
MMM

Pre-Chorus 1

16 *mf*

S1
know that. My ma - ma don't like you and she likes e-ve-ry-one. ___ And I ne-ver

S2
know that. My ma - ma don't like you and she likes e-ve-ry-one. ___ And I ne-ver

A1
— My ma - ma don't like you and she likes e-ve-ry-one. ___ And I ne-ver

A2
— My ma - ma don't like you and she likes e-ve-ry-one. ___ And I ne-ver

19

S1
like to ad-mit that I ___ was wrong. ___ And I've been so caught up in my job, didn't

S2
like to ad-mit that I ___ was wrong. ___ And I've been so caught up in my job, didn't

A1
like to ad-mit that I ___ was wrong. ___

A2
like to ad-mit that I ___ was wrong. ___

28

S1
And if you think that I'm stil hold - in' ___ on to some-thing

S2
And if you think that I'm stil hold - in' ___ on to some-thing

A1
And if you think that I'm stil hold - in' ___ on to some-thing

A2
And if you think that I'm stil hold - in' ___ on to some-thing

Verse 2

31

S1
you should go and love your-self. But when you told me that you ha-ted my

S2
you should go and love your-self. But when you told me that you ha-ted my

A1
you should go and love your-self. *pp* OOH _____

A2
you should go and love your-self.

39

S1
me for - get where I came from. And I did - n't wan - na

S2
me for - get where I came from. And I did - n't wan - na
mf

A1
OOH _____ And I did - n't wan - na
mf

A2
OOH _____ And I did - n't wan - na

41

S1
write a song cause I did - n't want a - ny - one think - ing I still care I

S2
write a song cause I did - n't want a - ny - one think - ing I still care I

A1
write a song *pp* MMM _____

A2
write a song *pp* MMM _____

Pre-Chorus 2

48 *p*

S1 know that. My ma - ma don't like you and she likes e-ve-ry-one. ___ And I ne-ver

S2 know that. My ma - ma don't like you and she likes e-ve-ry-one. ___ And I ne-ver

A1 — My ma - ma don't like you and she likes e-ve-ry-one. ___ And I ne-ver

A2 — My ma - ma don't like you and she likes e-ve-ry-one. ___ And I ne-ver

51

S1 like to ad - mit that I ___ was wrong. ___ And I've been so

S2 like to ad - mit that I ___ was wrong. ___ And I've been so

A1 like to ad - mit that I ___ was wrong. ___

A2 like to ad - mit that I ___ was wrong. ___

59

S1
you should go and love your - self. And if you think that I'm stil

S2
you should go and love your - self. And if you think that I'm stil

A1
you should go and love your - self. And if you think that I'm stil

A2
you should go and love your - self. And if you think that I'm stil

62

S1
hold-in'___ on to some-thing you should go and love your - self. M - M

S2
hold-in'___ on to some-thing you should go and love your - self. M - M

A1
hold - in'___ on to some-thing you should go and love your - self.

A2
hold - in'___ on to some-thing you should go and love your - self.

Verse 3

72

S1
M For all the times that you made me___ feel small. I fell in love

S2
M For all the times that you made me___ feel small. I fell in love

A1
M For all the times you made me feel small

A2
M For all the times you made me feel small

75

S1
— now I feel no - thing at all. I ne-ver felt

S2
— now I feel no - thing at all. I ne-ver felt

A1
Now I feel_____ no - thing at all.

A2
Now I feel_____ no - thing at all.

83

S1
you should go and love your-self. And if you think that I'm stil hold-in' ___ on to some-thing

S2
you should go and love your-self. And if you think that I'm stil hold-in' ___ on to some-thing

A1
you should go and love your-self. And if you think that I'm stil hold-in' ___ on to some-thing

A2
you should go and love your-self. And if you think that I'm stil hold-in' ___ on to some-thing

Chorus 4

87

S1
you should go and love your - self. Cause if you like the way you

S2
you should go and love your - self. Cause if you like the way you

A1
you should go and love your - self. Cause if you like the way you

A2
you should go and love your - self. Cause if you like the way you



05 Piano

Love Yourself

- Justin Bieber -

Words and Music by Ed Sheeran & Justin Bieber
Arranged by Frank de Vreeze
Original Key E

Pop, Soul ♩ = 100

Verse 1

N.C.

(No guitar: play this piano part)

Musical notation for the first four measures of Verse 1. The key signature is E major (three sharps) and the time signature is 4/4. The notation is for piano, with treble and bass staves.

Musical notation for measures 5 through 10 of Verse 1. The notation continues with piano accompaniment in E major, 4/4 time.

Musical notation for measures 11 through 16 of Verse 1. The notation continues with piano accompaniment in E major, 4/4 time.

Pre-Chorus 1

C#m A5 E5 C#m A5 E5

Musical notation for measures 17 through 20 of Pre-Chorus 1. The notation includes chord symbols above the staff: C#m, A5, E5, C#m, A5, E5. The piano part features chords in the right hand and a bass line in the left hand.

© www.ChorusOnline.com / 0031 (0) 6 - 41 57 77 56



06 Guitar

Love Yourself

- Justin Bieber -

Words and Music by Ed Sheeran & Justin Bieber
Arranged by Frank de Vreeze
Original Key E

Pop, Soul ♩ = 100

Verse 1

E. Jazz Sound N.C. Damp string on 2 & 4

Pre-Chorus 1

C#m A5 E5 C#m A5 E5 C#m A5 E5 B5

Chorus 1

C#m A^{add2} B5 E5 B5 C#5 A5 E5 A/b E

Verse 2

E5 B5 C#5 A5 E5 A/b E N.C.



07 Bass Guitar

Love Yourself

- Justin Bieber -

Words and Music by Ed Sheeran & Justin Bieber
Arranged by Frank de Vreeze
Original Key E

Pop, Soul ♩ = 100

Verse 1

N.C.

pp

Pre-Chorus 1

C#m A5 E5 C#m A5 E5 C#m A5

Chorus 1

E5 B5 C#m A^{add2} B5 E5 B5 C#5 A5

E5 A/b E E5 B5 C#5 A5 E5 A/b E

Verse 2

N.C.

© www.ChorusOnline.com / 0031 (0) 6 - 41 57 77 56

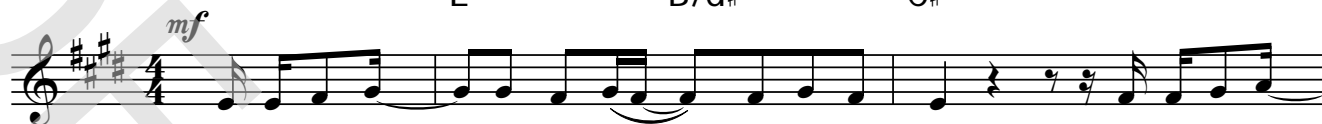
Love Yourself

- Justin Bieber -

Pop, Soul ♩ = 100

Words and Music by Ed Sheeran & Justin Bieber
 Arranged by Frank de Vreeze
 Original Key E

Verse 1

E B/d# C#^m

For all the times ___ that you rain ___ on my pa - rade. And all the clubs

F#^m E B/d# E B/d#

___ you get in u-sing my name. You think you broke ___ my heart oh girl for good-ness

C#^m F#^m E B/d#

___ sake. You think I'm cry - ing, oh my oh, well I ain't. And I did-n't wan-na

E B/d# C#^m F#^m E

write a song cause I did-n't want a - ny-one think-ing I still care I don't but, you still hit my

B/d# E B/d#



phone up. And ba - by I be mo - vin' on ___ and I think you

C#^m F#^m E B/d#

should be some-thin' I don't wan-na hold back, may-be you should know that. My ma - ma don't



09 Lyrics

Love Yourself

- Justin Bieber -

Words and Music by Ed Sheeran & Justin Bieber

Arranged by Frank de Vreeze

Original Key E

Verse 1

For all the times that you rain on my parade
And all the clubs you get in using my name
You think you broke my heart, oh girl for goodness sake
You think I'm crying, oh my oh, well I ain't

And I didn't wanna write a song cause I didn't want anyone thinking I still care
I don't but, you still hit my phone up
And baby I be movin' on and I think you should be somethin'
I don't wanna hold back, maybe you should know that

Pre-Chorus 1

My mama don't like you and she likes everyone
And I never like to admit that I was wrong
And I've been so caught up in my job, didn't see what's going on
And now I know, I'm better sleeping on my own

Chorus 1

Cause if you like the way you look that much
Oh baby you should go and love yourself
And if you think that I'm still holdin' on to somethin'
You should go and love yourself

Verse 2

But when you told me that you hated my friends
The only problem was with you and not them
And every time you told me my opinion was wrong
And tried to make me forget where I came from

And I didn't wanna write a song cause I didn't want anyone thinking I still care
I don't but, you still hit my phone up
And baby I be movin' on and I think you should be somethin'
I don't wanna hold back, maybe you should know that

Pre-Chorus 2

Chorus 2

Interlude
M, M, M etc

Verse 3

For all the times you made me feel small
I fell in love, now I fear nothin' at all
I never felt so low when I was vulnerable
Was I a fool to let you break down my walls?

Chorus 3

Chorus 4