



A Sky Full Of Stars - SSAATTBB

Pag.

02	Full score combo C instrument
16	Full score combo Bb instrument
30	Full score combo Eb instrument
44	Full score combo 4 extra staves
66	Full score small combo
81	Full score small combo 2 extra staves
103	Full score Vocals (SSAATTBB) Piano Advanced
120	Full score Vocals (SSAATTBB) Piano Intermediate
136	Vocals (SSAATTBB)
147	C instrument
149	Bb instrument
151	Eb instrument
153	Piano Combo
161	Piano Solo Advanced
169	Piano Solo Intermediate
175	Synthesizer
180	Acoustic Guitar Strumming
183	Guitar Solo
185	Bass guitar
189	Drumkit
191	Percussion
193	Leadsheet (melody, lyrics, chords)
197	Lyrics



SSAATTB Combo C

A Sky Full Of Stars

- Coldplay -

Words and Music by Guy Berryman, Jon Buckland,
Will Champion, Chris Martin and Tim Bergling
Arranged by Frank de Vreeze
Original Key

DEMO

DEMO

Pop Dance ♩ = 125

A

Soprano *mf* Div. _____
 'Cause you're a sky —

Alto _____

Tenor _____

Bass _____
 'Cause you're a sky —

C Instr. _____

Piano Combo *ff* *8va*
 E^bm7 D⁷ G⁷/C⁷ G^b Bbm7(13)

Synthesizer Warm Pad *mp*

Guitar _____

Bass Guitar _____

Drums Toms Floor tom *pp* *ff*

Percussion _____

© www.ChorusOnline.com / 0031 (0) 6 - 41 57 77 56



A Sky Full Of Stars 3

SSAATTB Combo C

15

S2
S1

S: give you my heart. 'Cause you're a sky ooh full of stars.

A: 'Cause you're a sky, 'Cause you're a sky, full of stars.

T: 'Cause you're a sky, 'Cause you're a sky, full of stars.

B: give you my heart. 'Cause you're a sky ooh full of stars.

C: G⁺ Bm7(13) E^bm7 D⁷ G/C⁺ G⁺

P.C. *mf* *p*

Synth *mf* *p*

Gr. BG Dr. Perc. *pp* Beat ring

20

S1
S2

S: full of stars. full of stars. ooh light up the path.

A: 'Cause you light up the path. light up the path.

T: 'Cause you light up the path. light up the path.

B: full of stars. full of stars. ooh light up the path. light up the path.

C: Bm7(13) E^bm7 D⁷ G/C⁺ G⁺ Bm7(13)

P.C. *f*

Synth *f*

Gr. BG Dr. Perc. *pp* Toms

A Sky Full Of Stars 5
SSAATTB Combo C

35

S
I think I saw you, _____

A
_____ if you do. _____ You you you, I saw you _____ you, are a sky _____

T
_____ if you do. _____ You you you, I saw you _____ you, are a sky _____

B
_____ if you do. _____ You you you, I saw you _____ you, are a sky _____

C
G⁺ Bm7(13) E_bm7 D_b7 C⁺ G⁺

P.C.
8th 8th

Synth

Gr.

BG

Dr.

Perc.

40

S
Div. I think I saw you. I think I saw

A
Div. I think I saw you. I think I saw
— full. I think I saw you I think I saw

T
— full. I think I saw you I think I saw

B
— full. I think I saw you I think I saw
Lower opt.

C
Bm7(13) E_bm7 D_b7 C⁺ G⁺ Bm7(13)

P.C.
8th 8th

Synth

Gtr.
Guitar 1: E. Guitar solo distortion (see separate Guitar solo score)
Guitar 2: Ac. Guitar strumming
D_bsus4 G_bsus4 G⁺ D_bsus4

BG

Dr.

Perc.

Note Arranger: Guitar Chords differ from Piano!

A Sky Full Of Stars 7

SSAATTB Combo C

55

S1 S2 S1

S full of stars. I wan - na die ooh I wan - na die in your arms.

A 'Cause you're a sky, full of stars. I wan - na die in your arms.

T sky, full of stars. I wan - na die in your arms.

B full of stars. I wan - na die ooh I wan - na die in your arms.

C

P.C. G^b Bm7(13) E^bm7 D⁷ C^b G^b

Synth

Gtr. G^b D⁷,sus4 G^b D⁷,sus4 G^b,sus4 G^b

BG

Dr.

Perc.

60

S1 S2 S1 S1 S2

S 'Cause you get light - - - er. ooh you get light - er the more - it gets dark.

A 'Cause you get light - - - er the more - it gets dark.

T 'Cause you get light - - - er the more - it gets dark.

B 'Cause you get light - - - er. ooh you get light - er the more - it gets dark.

C

P.C. Bm7(13) E^bm7 D⁷ C^b G^b Bm7(13)

Synth

Gtr. D⁷,sus4 *Guitar 1 play E. Guitar solo* *Guitar 2 continue Ac. Guitar groove* PLAY

BG

Dr.

Perc.

A Sky Full Of Stars 9
SSAATTB Combo C

75 Keep building until section G

S: ooh ooh _____ if you do

A: I don't care, I _____ don't I don't I don't I don't care, _____ if you do,

T: I don't care, I _____ don't I don't I don't I don't care, _____ if you do,

B: I don't care, I _____ don't I don't I don't I don't care, _____ if you do,

C: G^b B^{m7}(13) E^bm7 D^b7 C^b G^b

P.C. (Piano/Keyboard)

Synth

Gtr. G^b D^bsus4 *p* G^b D^bsus4 G^bsus4 G^b

BG (Bass Guitar)

Dr. (Drums)

Perc. (Percussion)

80

S: I think I saw you, _____ I think I see

A: _____ You you you, _____ I saw you _____ you, are a sky full.

T: _____ You you you, _____ I saw you _____ you, are a sky full.

B: _____ You you you, _____ I saw you _____ you, are a sky full.

C: B^{m7}(13) E^bm7 D^b7 C^b G^b B^{m7}(13)

P.C. (Piano/Keyboard)

Synth

Gtr. D^bsus4 G^b D^bsus4 G^bsus4 G^b D^bsus4

BG (Bass Guitar)

Dr. (Drums)

Perc. (Percussion)

A Sky Full Of Stars 11
SSAATTB Combo C

95

S *Unis.*
I think I saw you,
A *Unis.*
I think I saw I don't care don't care. I don't care, tear me a - part
T
I think I saw I don't care don't care. I don't care, tear me a - part
B *Unis.*
I think I saw I don't care don't care. I don't care, tear me a - part
C
G^b B^{m7}(13) E^bm7 D⁷ C^b G^b
P.C.
Synth
Gtr. G^b D^bsus4 G^b D^bsus4 G^bsus4 G^b
BG
Dr. *Cymbal crash*
Perc. *Hi-Hat foot*

100

S *Div.* I'm gon - na give
A *Div.* I think I saw you, *Unis.* I'm gon - na give
I think I saw I don't care don't care. I don't care, tear me a - part. *Div.* I'm gon - na give
T I think I saw I don't care don't care. I don't care, tear me a - part. *Div.* I'm gon - na give
B I think I saw I don't care don't care. I don't care, tear me a - part. I'm gon - na give
C
B^{m7}(13) E^bm7 D⁷ C^b G^b B^{m7}(13)
P.C.
Synth
Gtr. D^bsus4 G^b D^bsus4 G^bsus4 G^b D^bsus4
BG
Dr. *Cymbal crash*
Perc. *Hi-Hat foot*

A Sky Full Of Stars 13
SSAATTB Combo C

116

S Such heav - en - ly view

A Such heav - en - ly view

T Unis. I'm gon - na give you I'm gon - na give you I'm gon - na give you I'm gon - na give you

B Such heav - en - ly view

C Such heav - en - ly view

P.C. /g^b C^o D₇sus⁴ D₇sus⁴ E₇m

Synth

Gtr. C^o D₇sus⁴ E₇m

BG

Dr.

Perc.

120

S Unis. You're such a heav - en - ly view yeah yeah yeah yeah

A You're such a heav - en - ly view yeah yeah yeah yeah

T You're such a heav - en - ly view yeah yeah yeah yeah

B You're such a heav - en - ly view decresc. yeah yeah yeah yeah

C You're such a heav - en - ly view decresc. yeah yeah yeah yeah

P.C. /g^b C^o D₇sus⁴ D₇sus⁴ E₇m /g^b

Synth

Gtr. C^o D₇sus⁴ E₇m

BG

Dr. Cymbal crash

Perc.



SSAATTB Combo Bb

A Sky Full Of Stars

- Coldplay -

Words and Music by Guy Berryman, Jon Buckland,
Will Champion, Chris Martin and Tim Bergling
Arranged by Frank de Vreeze
Original Key

DEMO

DEMO

Pop Dance ♩ = 125

A

Soprano *mf* Div. 'Cause you're a sky —

Alto

Tenor

Bass 'Cause you're a sky —

Bb Instr.

Piano Combo *ff* E^bm7 D^b7 G^b/C^b G^b B^bm7(13)

Synthesizer Warm Pad *mp*

Guitar

Bass Guitar

Drums *pp* Toms *ff* Floor tom

Percussion

© www.ChorusOnline.com / 0031 (0) 6 - 41 57 77 56

A Sky Full Of Stars 3

SSAATTB Combo Bb

15

S: give you my heart. 'Cause you're a sky ooh full of stars.

A: 'Cause you're a sky, 'Cause you're a sky, full of stars.

T: 'Cause you're a sky, 'Cause you're a sky, full of stars.

B: give you my heart. 'Cause you're a sky ooh full of stars.

Bb: [Empty staff]

P.C.: G⁺ Bm7(13) E^bm7 D⁷ G/C⁺ G⁺

Synth: *mf* *p*

Gtr.: [Empty staff]

BG.: [Empty staff]

Dr.: [Empty staff]

Perc.: Beat ring *pp*

20

S: full of stars. full of stars. ooh light up the path.

A: 'Cause you light up the path. light up the path.

T: 'Cause you light up the path. light up the path.

B: full of stars. full of stars. ooh light up the path. light up the path.

Bb: [Empty staff]

P.C.: Bm7(13) E^bm7 D⁷ G/C⁺ G⁺ Bm7(13)

Synth: *f*

Gtr.: [Empty staff]

BG.: [Empty staff]

Dr.: [Empty staff]

Perc.: Toms *pp*

A Sky Full Of Stars 5

SSAATTB Combo Bb

35

S
A
T
B
Bb

I think I saw you, _____
_____ if you do. _____ You you you, I saw you _____ you, are a sky _____
_____ if you do. _____ You you you, I saw you _____ you, are a sky _____
_____ if you do. _____ You you you, I saw you _____ you, are a sky _____

P.C.
G⁺ Bm7(13) E_bm7 D_b7 C⁺ G⁺

Synth

Gtr.
BG
Dr.
Perc.

40

S
A
T
B
Bb

Div. I think I saw you. I think I saw
_____ full. I think I saw you. I think I saw
_____ full. I think I saw you. I think I saw
_____ full. I think I saw you. I think I saw

Lower opt.

Bb

Bm7(13) E_bm7 D_b7 C⁺ G⁺ Bm7(13)

P.C.

Synth

Gtr. 1: E.Guitar solo distortion (see separate Guitar Solo score)
Gtr. 2: Ac. Guitar strumming

D_bsus4 G_bsus4 G⁺ D_bsus4

Note Arranger: Guitar Chords differ from Piano!

BG
Dr.
Perc.

A Sky Full Of Stars 7

SSAATTB Combo Bb

55

S1 S2 S1

S full of stars. I wan - na die ooh die in your arms.

A 'Cause you're a sky, full of stars. I wan - na die in your arms.

T sky, full of stars. I wan - na die in your arms.

B full of stars. I wan - na die ooh die in your arms.

Bb

P.C. G^b Bm7(13) E^bm7 D⁷ C^b G^b

Synth

Gtr. G^b D₉sus4 G^b D₉sus4 G₉sus4 G^b

BG

Dr.

Perc.

60

S1 S2 S1 S1 S2

S 'Cause you get light - - - er. ooh you get light - er the more - it gets dark.

A 'Cause you get light - - - er the more - it gets dark.

T 'Cause you get light - - - er the more - it gets dark.

B 'Cause you get light - - - er. ooh you get light - er the more - it gets dark.

Bb

P.C. Bm7(13) E^bm7 D⁷ C^b G^b Bm7(13)

Synth

Gtr. D₉sus4 *Guitar 1 play E. Guitar solo* *Guitar 2 continue Ac. Guitar groove* **PLAY**

BG

Dr.

Perc.

A Sky Full Of Stars 9
SSAATTB Combo Bb

75 Keep building until section G

S: ooh ooh — if you do

A: I don't care, I don't I don't I don't I don't care, — if you do,

T: I don't care, I don't I don't I don't I don't care, — if you do,

B: I don't care, I don't I don't I don't I don't care, — if you do,

Bb: G^b B^{m7}(13) E^bm7 D⁷ C^o G^b

P.C. (Piano/Contingent) and Synth (Synthesizer) parts are shown with complex chordal textures.

Gtr. (Guitar): G^b D⁷,sus4 G^b D⁷,sus4 G^b,sus4 G^b

BG (Bass Guitar), Dr. (Drums), and Perc. (Percussion) parts are also included.

80

S: I think I saw you, — I think I see

A: — You you you, — I saw you — you, are a sky — full.

T: — You you you, — I saw you — you, are a sky — full.

B: — You you you, — I saw you — you, are a sky — full.

Bb: B^{m7}(13) E^bm7 D⁷ C^o G^b B^{m7}(13)

P.C. and Synth parts continue with intricate accompaniment.

Gtr. (Guitar): D⁷,sus4 G^b D⁷,sus4 G^b,sus4 G^b D⁷,sus4

BG, Dr., and Perc. parts are also shown.

A Sky Full Of Stars 11
SSAATTB Combo Bb

95

S *Unis.*
I think I saw you, —

A *Unis.*
I think I saw I don't care don't care. — I don't care, — tear me a - part

T
I think I saw I don't care don't care. — I don't care, — tear me a - part

B *Unis.*
I think I saw I don't care don't care. — I don't care, — tear me a - part

Bb

P.C. *G⁷ B^{m7}(13) E^bm7 D⁷ C⁷ G⁷*

Synth

Gtr. *G⁷ D⁷ sus4 G⁷ D⁷ sus4 G⁷ sus4 G⁷*

BG

Dr. *Cymbal crash*
Hi-Hat foot

Perc.

100

S *Div.* I'm gon - na give

A *Div.* I think I saw you, — *Unis.* I'm gon - na give

T — I think I saw I don't care don't care. — I don't care, — tear me a - part. — *Div.* I'm gon - na give

B — I think I saw I don't care don't care. — I don't care, — tear me a - part. — I'm gon - na give

Bb

P.C. *B^{m7}(13) E^bm7 D⁷ C⁷ G⁷ B^{m7}(13)*

Synth

Gtr. *D⁷ sus4 G⁷ D⁷ sus4 G⁷ sus4 G⁷ D⁷ sus4*

BG

Dr.

Perc.

A Sky Full Of Stars 13
SSAATTB Combo Bb

116

S Such heav - en - ly view

A Such heav - en - ly view

T Unis. I'm gon - na give you I'm gon - na give you I'm gon - na give you I'm gon - na give you

B Such heav - en - ly view

Bb Such heav - en - ly view

P.C. /g^b C[>] D₇sus⁴ D₇sus⁴ E₇m

Synth

Gtr. C[>] D₇sus⁴ E₇m

BG

Dr.

Perc.

120

S Unis. You're such a heav - en - ly view yeah yeah yeah yeah

A You're such a heav - en - ly view yeah yeah yeah yeah

T You're such a heav - en - ly view yeah yeah yeah yeah

B You're such a heav - en - ly view yeah yeah yeah yeah

Bb You're such a heav - en - ly view *decresc.* yeah yeah yeah yeah

P.C. /g^b C[>] D₇sus⁴ D₇sus⁴ E₇m /g^b

Synth

Gtr. C[>] D₇sus⁴ E₇m

BG

Dr. Cymbal crash

Perc.



SSAATTB Combo Eb

A Sky Full Of Stars

- Coldplay -

Words and Music by Guy Berryman, Jon Buckland,
Will Champion, Chris Martin and Tim Bergling
Arranged by Frank de Vreeze
Original Key

DEMO

DEMO

Pop Dance ♩ = 125

A

Soprano *mf* Div. 'Cause you're a sky —

Alto

Tenor

Bass 'Cause you're a sky —

Eb Instr.

Piano Combo *ff* E^bm7 D^b7 G^b/C^b G^b B^bm7(13)

Synthesizer Warm Pad *mp*

Guitar

Bass Guitar

Drums Toms Floor tom *pp* *ff*

Percussion

© www.ChorusOnline.com / 0031 (0) 6 - 41 57 77 56

A Sky Full Of Stars 3

SSAATTB Combo Eb

15

S2
S1

S: give you my heart. 'Cause you're a sky ooh full of stars.

A: 'Cause you're a sky, 'Cause you're a sky, full of stars.

T: 'Cause you're a sky, 'Cause you're a sky, full of stars.

B: give you my heart. 'Cause you're a sky ooh full of stars.

Eb: _____

P.C. G⁺ B^m7(13) E⁺m7 D⁺7 G⁺/C⁺ G⁺

Synth: _____

Gtr: _____

BG: _____

Dr: _____

Perc. Beat ring *pp*

20

S1
S2

S: full of stars. full of stars. ooh light up the path.

A: 'Cause you light up the path. light up the path.

T: 'Cause you light up the path. light up the path.

B: full of stars. full of stars. ooh light up the path. light up the path.

Eb: _____

P.C. B^m7(13) E⁺m7 D⁺7 G⁺/C⁺ G⁺ B^m7(13)

Synth: _____

Gtr: _____

BG: _____

Dr: _____

Perc. Toms *pp*

A Sky Full Of Stars 5

SSAATTB Combo Eb

35

S
A
T
B
Eb
P.C.
Synth
Gtr.
BG
Dr.
Perc.

I think I saw you, _____
_____ if you do. _____ You you you, I saw you _____ you, are a sky _____
_____ if you do. _____ You you you, I saw you _____ you, are a sky _____
_____ if you do. _____ You you you, I saw you _____ you, are a sky _____

G⁺ B^{m7}(13) E^{m7} D⁷ C⁺ G⁺

40

S
A
T
B
Eb
P.C.
Synth
Gtr.
BG
Dr.
Perc.

Div. I think I saw you. I think I saw
_____ full. I think I saw you I think I saw
_____ full. I think I saw you I think I saw
_____ full. I think I saw you I think I saw

Lower opt.
_____ full. I think I saw you I think I saw

B^{m7}(13) E^{m7} D⁷ C⁺ G⁺ B^{m7}(13)

Guitar 1: E. Guitar solo distortion (see separate Guitar Solo score)
Guitar 2: Ac. Guitar strumming

D⁺sus4 G⁺sus4 G⁺ D⁺sus4

Note Arranger, Guitar Chords differ from Piano!

A Sky Full Of Stars 7

SSAATTB Combo Eb

55

S1 S2 S1

S full of stars. I wan - na die ooh die in your arms.

A 'Cause you're a sky, full of stars. I wan - na die in your arms.

T sky, full of stars. I wan - na die in your arms.

B full of stars. I wan - na die ooh die in your arms.

Eb

P.C. G^b B^{m7}(13) E^{m7} D⁷ C⁺ G^b

Synth

Gtr. G^b D₉^{sus4} G^b D₉^{sus4} G₉^{sus4} G^b

BG

Dr.

Perc.

60

S1 S2 S1 S1 S2

S 'Cause you get light - - - er. ooh you get light - er the more_ it gets dark.

A 'Cause you get light - - - er the more_ it gets dark.

T 'Cause you get light - - - er the more_ it gets dark.

B 'Cause you get light - - - er. ooh you get light - er the more_ it gets dark.

Eb

P.C. B^{m7}(13) E^{m7} D⁷ C⁺ G^b B^{m7}(13)

Synth

Gtr. D₉^{sus4} *Guitar 1 play E. Guitar solo* *Guitar 2 continue Ac. Guitar groove* **PLAY**

BG

Dr.

Perc.

A Sky Full Of Stars 9

SSAATTB Combo Eb

75 Keep building until section G

S: ooh ooh _____ if you do

A: I don't care, I _____ don't I don't I don't I don't care, _____ if you do,

T: I don't care, I _____ don't I don't I don't I don't care, _____ if you do,

B: I don't care, I _____ don't I don't I don't I don't care, _____ if you do,

Eb: _____

P.C.: G^{\flat} $B^{\flat}m7(13)$ $E^{\flat}m7$ $D^{\flat}7$ C^{\flat} G^{\flat}

Synth: _____

Gtr.: G^{\flat} $D^{\flat},sus4$ G^{\flat} $D^{\flat},sus4$ $G^{\flat},sus4$ G^{\flat}

BG: _____

Dr.: _____

Perc.: _____

80

S: I think I saw you, _____ I think I see

A: _____ You you you, _____ I saw you _____ you, are a sky full.

T: _____ You you you, _____ I saw you _____ you, are a sky full.

B: _____ You you you, _____ I saw you _____ you, are a sky full.

Eb: _____

P.C.: $B^{\flat}m7(13)$ $E^{\flat}m7$ $D^{\flat}7$ C^{\flat} G^{\flat} $B^{\flat}m7(13)$

Synth: _____

Gtr.: $D^{\flat},sus4$ G^{\flat} $D^{\flat},sus4$ $G^{\flat},sus4$ G^{\flat} $D^{\flat},sus4$

BG: _____

Dr.: _____

Perc.: _____

A Sky Full Of Stars 11
SSAATTB Combo Eb

95

S *Unis.*
A *Unis.*
T
B *Unis.*

I think I saw you,
I think I saw I don't care don't care. I don't care, tear me a - part

I think I saw I don't care don't care. I don't care, tear me a - part

I think I saw I don't care don't care. I don't care, tear me a - part

P.C. *G^b B^bm7(13) E^bm7 D^b7 C^b G^b*

Synth

Gtr. *G^b D^bsus4 G^b D^bsus4 G^bsus4 G^b*

BG

Dr. *Cymbal crash*
Hi-Hat foot

Perc.

100

S *Div.*
A *Div.* *Unis.* *Div.*
T *Div.*
B *Div.*

I think I saw you, I'm gon - na give
I think I saw I don't care don't care. I don't care, tear me a - part. I'm gon - na give
I think I saw I don't care don't care. I don't care, tear me a - part. I'm gon - na give
I think I saw I don't care don't care. I don't care, tear me a - part. I'm gon - na give

I'm gon - na give
I'm gon - na give
I'm gon - na give
I'm gon - na give

P.C. *B^bm7(13) E^bm7 D^b7 C^b G^b B^bm7(13)*

Synth

Gtr. *D^bsus4 G^b D^bsus4 G^bsus4 G^b D^bsus4*

BG

Dr.

Perc.

A Sky Full Of Stars 13

SSAATTB Combo Eb

116

S Such heav - en - ly view

A Such heav - en - ly view

T Unis. I'm gon - na give you I'm gon - na give you I'm gon - na give you I'm gon - na give you

B Such heav - en - ly view

Eb Such heav - en - ly view

P.C. /g^b C^b D₇^{sus4} D₇^{sus4} E₇^m

Synth C^b D₇^{sus4} E₇^m

Gtr. C^b D₇^{sus4} E₇^m

BG

Dr.

Perc.

120

S Unis. You're such a heav - en - ly view yeah yeah yeah yeah

A You're such a heav - en - ly view yeah yeah yeah yeah

T You're such a heav - en - ly view yeah yeah yeah yeah

B You're such a heav - en - ly view yeah yeah yeah yeah

Eb You're such a heav - en - ly view *deces.* yeah yeah yeah yeah

P.C. /g^b C^b D₇^{sus4} D₇^{sus4} E₇^m /g^b

Synth C^b D₇^{sus4} E₇^m

Gtr. C^b D₇^{sus4} E₇^m

BG

Dr. Cymbal crash

Perc.

SSAATTB 4 extra staves

A Sky Full Of Stars

- Coldplay -

Words and Music by Guy Berryman, Jon Buckland,
Will Champion, Chris Martin and Tim Bergling
Arranged by Frank de Vreeze
Original Key

Pop Dance $\text{♩} = 125$

A

Soprano
Alto
Tenor
Bass

Piano Combo
Synthesizer
Guitar
Bass Guitar
Drums
Percussion

Sopr. 2 sing. D4 unit m.23

mf
Cause you're a sky

f
Cause you're a sky

pp Toms
mf Flourish

mf Em7 D7 G/C# G# Bm7(13) E,m7 D7



85

S you, _____

A you you you I think I saw you, _____

T you you you I think I saw you, _____

B you you you I think I saw you, _____

1

2

3

4

E:m7 D:7 C: G: E:m7 D:7 C: G: E:m7 D:7 C: G:

see score Guitar 1

Lower pit

85

Dix: I think I saw you, _____

Dix: I think I saw you, _____

Dix: I think I saw you, _____

Dix: I think I saw you, _____

G

Perc.

Dr.

BG

Gtr.

Smith

P.C.

A Sky Full of Stars 19

SSAATTB 4 extra staves

1/9

S — Im gon - na give you — Im gon - na give you — Im gon - na give you — my heart — you're a sky, — full of stars.

A — Im gon - na give you — Im gon - na give you — Im gon - na give you — my heart — you're a sky, —

T — Im gon - na give you — Im gon - na give you — Im gon - na give you — my heart — you're a sky, —

B — You — my heart — you — you're a sky, —

1 —

2 —

3 —

4 —

P.C. C D₇sus4 E₇m /gb C D₇sus4 D₇7sus4 E₇m

Smith C D₇sus4 E₇m C D₇sus4 E₇m

Gtr. C D₇sus4 E₇m C D₇sus4 E₇m

BG C D₇sus4 E₇m C D₇sus4 E₇m

Dr. C D₇sus4 E₇m C D₇sus4 E₇m

Perc. Cymbal crash

121

S
 view _____ yeah _____ yeah _____ yeah _____ yeah _____ yeah _____ yeah _____

A
 view _____ yeah _____ yeah _____ yeah _____ yeah _____ yeah _____ yeah _____

T
 view _____ yeah _____ yeah _____ yeah _____ yeah _____ yeah _____ yeah _____

B
 view _____ yeah _____ yeah _____ yeah _____ yeah _____ yeah _____ yeah _____

1

2

3

4

P.C.
 C₁ D₁sus4 D₇sus4 E₁m /g^h C₁ D₁sus4 E₁m

Synth
 C₁ D₁sus4 E₁m

Gtr.
 C₁ D₁sus4 E₁m

BG
 C₁ D₁sus4 E₁m

Dr.
 Cymbal crash
 Floor tom

Perc.
 Cymbal crash
 Floor tom



SSAATTB small Combo

A Sky Full Of Stars

- Coldplay -

Words and Music by Guy Berryman, Jon Buckland,
Will Champion, Chris Martin and Tim Bergling
Arranged by Frank de Vreeze
Original Key

DEMO

DEMO

Pop Dance ♩ = 125

A

mf

Soprano: *mf* Div. S2 S1
Sopr. 2 sing Db until m23
'Cause you're a sky ooh

Alto

Tenor

Bass

Piano Combo: *ff*
E_bm⁷ D_b⁷ G_b/C_b G_b B_bm⁷(13) E_bm⁷ D_b⁷ G_b/C_b

Guitar

Bass Guitar

Drums: *pp* *ff*
Toms Floor tom

Percussion

© www.ChorusOnline.com / 0031 (0) 6 - 41 57 77 56



A Sky Full Of Stars 3

SSAATTB small Combo

17

S2
S1

S1
S2

S
A
T
B

oooh _____ full of stars. full of stars. full of stars. _____
 'Cause you're a sky, 'Cause you're a sky, _____ full of stars. _____ 'Cause you
 'Cause you're a sky, 'Cause you're a sky, _____ full of stars. _____ 'Cause you

E^bm7 D^b7 G^b/C^b G^b B^bm7(13) E^bm7 D^b7

P.C.

8^{vb} 8^{vb}

Gtr.

BG

Dr.

Perc. Beat ring *pp*

22

C

S
A
T
B

oooh _____ light up the path. _____ I don't care, _____ go on and
 light _____ up the path. _____ light up the path _____ oooh _____
 light _____ up the path. _____ light up the path _____ oooh _____

oooh light up the path. light up the path oooh

G^b/C^b G^b B^bm7(13) E^bm7 D^b7 C^b

P.C.

8^{vb} 8^{vb}

Gtr.

BG

Dr. Toms Floor tom *pp* *f*

Perc.

A Sky Full Of Stars 7

SSAATTB small Combo

57

S2
S1

S
ooh die in your arms. 'Cause you get light - - - er.

A
I wan-na die in your arms.

T
I wan-na die in your arms. 'Cause you get

B
ooh die in your arms. 'Cause you get light - - - er.

E_bm7 D_b7 C_b G_b B^m7(13) E_bm7 D_b7

P.C.

G_b D_bsus4 G_bsus4 G_b D_bsus4

Gtr. *Guitar 1 play E. Guitar solo*
Guitar 2 continue Ac. Guitar groove PLAY

BG

Dr.

Perc.

62

S2
S1

S
ooh you get light - er the more it gets dark. ooh

A
'Cause you get light - - - er the more it gets dark. I'm gon-na give

T
light - - - er the more it gets dark. I'm gon-na give you my heart..

B
ooh you get light - er the more it gets dark. ooh

C_b G_b B^m7(13) E_bm7 D_b7 C_b

P.C.

repeat Solo(4 bars) until section G

Gtr.

BG

Dr.

Perc.

A Sky Full Of Stars 9
SSAATTB small Combo

75 Keep building until section G

S
— ooh ooh — if you do

A
I don't care, I don't I don't I don't I don't care,

T
I don't care, I don't I don't I don't I don't care,

B
I don't care, I don't I don't I don't I don't care,

P.C.
G^b B^{m7}(13) E^bm⁷ D^b7 C^b

Gtr.
G^b D^bsus⁴ G^b D^bsus⁴ G^bsus⁴

BG

Dr.

Perc.

79

S
I think I saw you, —

A
— if you do, — You you you, — I saw you — you, are a sky

T
— if you do, — You you you, — I saw you — you, are a sky

B
— if you do, — You you you, — I saw you — you, are a sky

P.C.
G^b B^{m7}(13) E^bm⁷ D^b7 C^b G^b

Gtr.
G^b D^bsus⁴ G^b D^bsus⁴ G^bsus⁴ G^b

BG

Dr.

Perc.

A Sky Full Of Stars 11

SSAATTB small Combo

94

S *Unis.*

A I think I saw you, *Unis.*

I think I saw I don't care don't care.

T I think I saw I don't care don't care.

B *Unis.*

I think I saw I don't care don't care.

P.C. *C* *G \flat* *B \flat m7(13)* *E \flat m7* *D \flat 7*

Gtr. *G \flat sus4* *G \flat* *D \flat sus4* *G \flat* *D \flat sus4*

BG

Dr. *Cymbal crash*

Perc. *Hi-Hat foot*

98

S

A *Div.* I think I saw you, *Unis.*

I don't care, tear me a - part I think I saw I don't care don't care.

T I don't care, tear me a - part I think I saw I don't care don't care.

B I don't care, tear me a - part I think I saw I don't care don't care.

P.C. *C* *G \flat* *B \flat m7(13)* *E \flat m7* *D \flat 7*

Gtr. *G \flat sus4* *G \flat* *D \flat sus4* *G \flat* *D \flat sus4*

BG

Dr.

Perc.

A Sky Full Of Stars 13
SSAATTB small Combo

109

S I'm gon - na give you I'm gon - na give you I'm gon - na give you my heart!

A You my heart. —
I'm gon - na give you I'm gon - na give you I'm gon - na give you I'm gon - na give you

T You my heart. —

B You my heart.

P.C. C D_b7sus4 D_b7sus4 E_bm /g_b

Gtr. C D_b7sus4 E_bm

BG

Dr.

Perc.

I

113

S Lead you're a sky, you're a sky, full of stars. Such heav - en - ly

A you Such heav - en - ly

T Lead you're a sky, you're a sky, full of stars. I'm gon - na give you I'm gon - na give you I'm gon - na give you I'm gon - na give you
Unis.

B you Such heav - en - ly

P.C. C D_b7sus4 D_b7sus4 E_bm /g_b

Gtr. C D_b7sus4 E_bm

BG

Dr. Cymbal crash

Perc.

A Sky Full Of Stars 15
SSAATTB small Combo

J

125

mp

S
— yeah yeah — yeah yeah. —
Heart Div.

A
— yeah yeah — yeah yeah. —
Heart Div.

T
— yeah yeah — yeah yeah. —
Heart

B
— yeah yeah — yeah yeah. —
Heart

P.C.
C D_bsus4 E_b^m /g^b C_b D_bsus4

Gtr.

BG

Dr.
Floor tom

Perc.

131

pp

S
View (w)

A
View (w)

T
View (w)

B
View (w)

P.C.
E_b^m C_b E_b^m D_bsus4 E_b^m *pp*

Gtr. *pp*

BG *pp*

Dr.

Perc.

A Sky Full Of Stars 3
SSAATTB small Combo extra staves

12

S2
S1

S: I'm gon-na give you _____
 A: I'm gon-na give _____ you my heart.
 T: I'm gon-na give _____ you my heart.
 B: I'm gon-na give you _____ ooh _____ you my heart. _____
 1: _____
 2: _____
 PC: _____
 Gtr: _____
 BG: _____
 Dr: _____
 Perc: _____

B \flat m7(13) E \flat m7 D \flat 7 G \flat /C \flat G \flat B \flat m7(13) E \flat m7 D \flat 7
 (g \flat) (g \flat) (g \flat)

Beat ring
 ppp

C

Lead Unis.

25
S I don't care, go on and tear me a - part. I don't care,

A I don't care, I don't

T I don't care, I don't

B I don't care, I don't

1 I don't care, I don't

2 I don't care, I don't

PC. *g[♭]* E_bm7 D₉7 C_♭ G_♭ B₉m7(13) E_bm7 D₉7 *g[♭]*

Gtr. 8

BG *Floor tom*

Dr. *f*

Perc.

A Sky Full Of Stars 7
SSAATTB small Combo extra staves

D

36

S I think I saw you, _____

A I think I saw you, _____

T I think I saw you, _____

B I think I saw you, _____

1 I think I saw you, _____

2 I think I saw you, _____

PC. *(g^{tr})* *(g^{tr})*

Guitar 1: E. Guitar solo distortion (see separate Guitar Solo score)
Guitar 2: Ac. Guitar strumming

8

Dr.

Perc.

Note Arranger: Guitar Chords differ from Piano!

60

S1 S2 S1 S1 S2

S Cause you get light - - er ooh _____ you get light - er the more it gets dark. _____

A _____

T Cause you get light - - er the more _____ it gets dark. _____ I'm gon-na

B Cause you get light - - er ooh _____ you get light - er the more it gets dark. _____

1

2

B \flat m7(13) E \flat m7 D \flat 7 C \flat G \flat B \flat m7(13) E \flat m7 D \flat 7

PC. *Guitar 1 play E. Guitar solo*
D \flat sus4 *Guitar 2 continue etc. Guitar groove PLAY*

8

Dr. Perc.

BG

repeat Solo (4 bars) until section G

A Sky Full Of Stars 13
 SSAATTB small Combo extra staves

Keep building until section G

72

S
 I don't care, _____ if you do, _____ ooh ooh _____ if you do

A
 I don't care, I _____ don't care _____ if you do, _____ I don't care, I _____ don't I don't

T
 I don't care, I _____ don't care _____ if you do, _____ I don't care, I _____ don't I don't

B
 I don't care, I _____ don't care _____ if you do, _____ I don't care, I _____ don't I don't

1
 2

P.C.
 B \flat m7(13) E \flat m7 D \flat 7 C \flat G \flat B \flat m7(13) E \flat m7 D \flat 7

PC.
 D \flat 7sus4 G \flat D \flat 7sus4 G \flat D \flat 7sus4 G \flat D \flat 7sus4 G \flat D \flat 7sus4 G \flat D \flat 7sus4

Git.
 8

BG
 8

Dr.
 8

Perc.
 8

A Sky Full Of Stars 15
SSAATTB small Combo extra staves

84

S I think I see you, _____

A — full! You you you I think — I saw you. —

T — full! You you you I think — I saw you. —

B — full! You you you I think — I saw you. —

I You you you I think — I saw you. —

2 You you you I think — I saw you. —

Tear me a - part, — I think I saw you _____

Div. I think I saw you. _____

Lower opt. you _____

Chords: Bbm7(13), Em7, D7, G, Gb, Ebm7, D7, Dbsus4, Gbsus4, Gb, Gb, Dbsus4

see score Guitar 1

Perc. Dr. BG Gtr.

96

S Unis. I think I saw you, _____

A Unis. I think I saw I don't care don't care. I don't care, tear me a - part _____

T Unis. I think I saw I don't care don't care. I don't care, tear me a - part _____

B Unis. I think I saw I don't care don't care. I don't care, tear me a - part _____

1 I think I saw I don't care don't care. I think I saw I don't care don't care.

2 I think I saw I don't care don't care. I think I saw I don't care don't care.

Gtr. $B_{b7}(13)$ E_{b7} D_{b7} C_{b} G_{b} $B_{b7}(13)$ E_{b7} D_{b7}

BG D_{b7sus4} G_{b7} D_{b7sus4} G_{b7sus4} G_{b} D_{b7sus4} G_{b7} D_{b7sus4}

Perc. *Cymbal crash* *Hi-hat foot*

108

S — my heart — I'm gon - na give you — I'm gon - na give you — I'm gon - na give you — my heart!

A my heart. You — I'm gon - na give you — I'm gon - na give you — I'm gon - na give you — my heart —

T — I'm gon - na give you — I'm gon - na give you — I'm gon - na give you — I'm gon - na give you — I'm gon - na give you — I'm gon - na give you —

B — my heart. You — my heart. — my heart.

1
2

/g# C# D_bsus4 D_b7sus4 E_bm /g#

P.C. (g#) C# D_bsus4 E_bm

Gtr. 8

BG 8

Dr.

Perc.

120

Unis.

S
You're such a heav - en - ly view _____ yeah _____ yeah _____ yeah _____

A
You're such a heav - en - ly view _____ 8 _____ yeah _____ yeah _____ yeah _____

T
You're such a heav - en - ly view _____ 8 _____ yeah _____ yeah _____ yeah _____

B
You're such a heav - en - ly view _____ yeah _____ yeah _____ yeah _____

1
2
/g# C# D_bsus4 D_b7sus4 E_bm /g#

PC.
/g# C# D_bsus4 D_b7sus4 E_bm /g#

Gtr.
8

BG
8

Dr.
Cymbal crash

Perc.
Cymbal crash



SSAATTB Piano Solo Advanced

A Sky Full Of Stars

- Coldplay -

Words and Music by Guy Berryman, Jon Buckland,
Will Champion, Chris Martin and Tim Bergling
Arranged by Frank de Vreeze
Original Key

DEMO

VEEP

SO

Pop Dance ♩ = 125

A

mf
Div.

Soprano
Alto
Tenor
Bass

Sopr. 2 sing Db until m23

'Cause you're a sky

'Cause you're a sky

ff E^bm7 D^b7 G^b/c^b G^b B^bm7(13)

Piano Solo
Advanced

8^{vb}

© www.ChorusOnline.com / 0031 (0) 6 - 41 57 77 56



A Sky Full Of Stars 3
SSAATTB Piano Solo Advanced

13

S2
S1

S
ooh give you my heart. 'Cause you're a sky

A
I'm gon-na give you my heart.

T
I'm gon-na give you my heart.

B
ooh give you my heart. 'Cause you're a sky

E^bm7 D^b7 G^b/C^b G^b B^m7(13)

P.S.A.

8^{vb}

17

S2
S1

S
ooh full of stars. full of stars. full of stars.

A
'Cause you're a sky, 'Cause you're a sky, full of stars.

T
'Cause you're a sky, 'Cause you're a sky, full of stars.

B
ooh full of stars. full of stars. full of stars.

E^bm7 D^b7 G^b/C^b G^b B^m7(13)

P.S.A.

8^{vb}

29

S I don't care, _____ if you do, _____ ooh ooh _____ if you

A _____ don't care _____ if you do, _____ I don't care, I _____

T _____ don't care _____ if you do, _____ I don't care, I _____

B _____ don't care _____ if you do, _____ I don't care, I _____

E^b,m7 D^b,7 C^b G^b B^bm7(13)

P.S.A.

8^{vb}

33

S do _____ I think I saw _____

A _____ don't I don't I don't I don't care, _____ if you do. _____

T _____ don't I don't I don't I don't care, _____ if you do. _____

B _____ don't I don't I don't I don't care, _____ if you do. _____

E^b,m7 D^b,7 C^b G^b B^bm7(13)

P.S.A.

8^{vb}

A Sky Full Of Stars 7
SSAATTB Piano Solo Advanced

45

S you. I think I saw

A you. I think I saw

T you. I think I saw

B you. I think I saw

E_b^m7 D_b^7 C_b G_b $B^bm7(13)$

P.S.A.

8^{vb}

49

S 'Cause you're a sky

A 'Cause you're a sky

T 'Cause you're a sky

B Unis. 'Cause you're a sky

E_b^m7 D_b^7 C_b G_b $B^bm7(13)$

P.S.A.

8^{vb}

A Sky Full Of Stars 9
SSAATTB Piano Solo Advanced

61

S S2
S1

S er. ooh you get light - er the more it gets dark.

A 'Cause you get light - - - er the more it gets dark.

T 'Cause you get light - - - er the more it gets dark.

B - - - er. ooh you get light - er the more it gets dark.

E^bm7 D^b7 C^b G^b B^bm7(13)

P.S.A.

65

S Give you my heart.

S ooh Give you my heart.

A I'm gon-na give you my heart.. Give you my heart.

T I'm gon-na give you my heart.. Give you my heart.

B ooh Give you my heart. Give you my heart.

E^bm7 D^b7 C^b G^b B^bm7(13)

P.S.A.

77 Keep building until section G

S do I think I saw

A — don't I don't I don't I don't care, — if you do, —

T — don't I don't I don't I don't care, — if you do, —

B — don't I don't I don't I don't care, — if you do, —

E_bm7 D_b⁷ C_b G_b B_bm7(13)

P.S.A.

81

S you, — I think I see

A You you you, — I saw you — you, are a sky — full.

T You you you, — I saw you — you, are a sky — full.

B You you you, — I saw you — you, are a sky — full.

E_bm7 D_b⁷ C_b G_b B_bm7(13)

P.S.A.

94

S *Unis.*
I think I saw you,

A *Unis.*
I think I saw I don't care don't care.

T
I think I saw I don't care don't care.

B *Unis.*
I think I saw I don't care don't care.

P.S.A.
C^b G^b B^bm7(13) E^bm7 D^b7
ff
(8^{vb}) 8^{vb}

98

S
I think I saw you,

A *Div.* *Unis.*
— I don't care, tear me a - part — I think I saw I don't care don't care.

T
— I don't care, tear me a - part — I think I saw I don't care don't care.

B
— I don't care, tear me a - part — I think I saw I don't care don't care.

P.S.A.
C^b G^b B^bm7(13) E^bm7 D^b7
(8^{vb}) 8^{vb}

109

S I'm gon-na give you I'm gon-na give you I'm gon-na give you my heart!

A You my heart.

T I'm gon-na give you I'm gon-na give you I'm gon-na give you I'm gon-na give you

B You my heart.

C_b D_bsus4 D_b7sus4 E_b^m /g_b

P.S.A.

I

113

S Lead you're a sky, you're a sky, full of stars. Such heav-en - ly

A you Such heav-en - ly

T I'm gon-na give you I'm gon-na give you I'm gon-na give you I'm gon-na give you

B Lead you're a sky, you're a sky, full of stars. Unis. Such heav-en - ly

C_b D_bsus4 D_b7sus4 E_b^m /g_b

P.S.A.



SSAATTB Piano Solo Intermediate

A Sky Full Of Stars

- Coldplay -

Words and Music by Guy Berryman, Jon Buckland,
Will Champion, Chris Martin and Tim Bergling
Arranged by Frank de Vreeze
Original Key

DEMO

VEEPSTON

STON

Pop Dance ♩ = 125

A

mf

Div.

Soprano: Sop. 2 sing Db until m23

'Cause you're a sky

E_bm⁷ D_b⁷ G_b/c_b G_b B_bm⁷(13)

ff

Piano Solo Intermediate

© www.ChorusOnline.com / 0031 (0) 6 - 41 57 77 56

A Sky Full Of Stars 3
SSAATTB Piano Solo Intermediate

14

S2
S1

S
oooh give you my heart. 'Cause you're a sky

A
give you my heart. 'Cause you're a

T
give you my heart. 'Cause you're a

B
oooh give you my heart. 'Cause you're a sky

G^b/C^b G^b B^m7(13) E^bm⁷ D^b7

P.S.I.

(8th)

18

S2
S1

S
oooh full of stars. full of stars. full of stars.

A
sky, 'Cause you're a sky, full of stars. 'Cause you

T
sky, 'Cause you're a sky, full of stars. 'Cause you

B
oooh full of stars. full of stars. full of stars.

G^b/C^b G^b B^m7(13) E^bm⁷ D^b7

P.S.I.

(8th)

S1
S2

A Sky Full Of Stars 5
SSAATTB Piano Solo Intermediate

30

S
_____ if you do, _____ ooh ooh _____ if you do

A
care _____ if you do, _____ I don't care, I _____ don't I don't

T
care _____ if you do, _____ I don't care, I _____ don't I don't

B
care _____ if you do, _____ I don't care, I _____ don't I don't

P.S.I.
C^b G^b B^bm7(13) E^bm7 D^b7

(8^{vb}) 8^{vb}

34

S
I think I saw you, _____

A
I don't I don't care, _____ if you do. _____ You you

T
I don't I don't care, _____ if you do. _____ You you

B
I don't I don't care, _____ if you do. _____ You you

P.S.I.
C^b G^b B^bm7(13) E^bm7 D^b7

(8^{vb}) 8^{vb}

A Sky Full Of Stars 7
SSAATTB Piano Solo Intermediate

47

S
A
T
B

I think I saw
I think I saw
I think I saw
I think I saw

G^b B^bm7(13) E^bm7 D^b7 C^b G^b

P.S.I.

(8^{vb}) 8^{vb}

52

S
A
T
B

'Cause you're a sky _____ ooh _____ full of stars.
'Cause you're a sky, 'Cause you're a sky, _____
Lead
'Cause you're a sky, 'Cause you're a sky, _____ full of stars.
Unis. *p*
'Cause you're a sky _____ ooh _____ full of stars.

B^bm7(13) E^bm7 D^b7 C^b G^b

P.S.I.

pp

(8^{vb})

E

S2 S1

A Sky Full Of Stars 9
SSAATTB Piano Solo Intermediate

64

S1
S2

S
er the more_ it gets dark. _ ooh _

A
_ it gets dark. _ I'm gon - na give _

T
dark. _ I'm gon - na give _ you my heart..

B
_ er the more_ it gets dark. _ ooh

P.S.I.
Bm7(13) Eb,m7 Db,7 Cb

67

F

S
Give you my heart. _ Give you my heart. _ I don't care, _ go on and tear _ me a-part.

A
_ you my heart.. Give you my heart. _ ooh _

T
_ Give you my heart. _ ooh _

B
Give you my heart. _ Give you my heart. _ ooh _

P.S.I.
Gb Bm7(13) Eb,m7 Db,7 Cb Gb

Lead Unis.

80

S I think I saw you, _____ I think I see

A _____ You you you, _____ I saw you _____ you, are a sky _____ full.

T _____ You you you, _____ I saw you _____ you, are a sky _____ full.

B _____ You you you, _____ I saw you _____ you, are a sky _____ full.

P.S.I. $Bm7(13)$ $E_b m7$ $D_b 7$ C_b G_b $Bm7(13)$

85

S you, _____ I think I saw

A You you you I think _____ I saw you. _____ Tear me a - part, _____ I think I saw

T You you you I think _____ I saw you. _____ Tear me a - part, _____ I think I saw

B You you you I think _____ I saw you. _____ Tear me a - part, _____ I think I saw

P.S.I. $E_b m7$ $D_b 7$ C_b G_b

99

S
A
T
B

I think I saw you, _____
Div. Unis.

tear me a-part _____ I think I saw I don't care don't care. _____ I don't care, tear me a-part.

tear me a-part _____ I think I saw I don't care don't care. _____ I don't care, tear me a-part.

tear me a-part _____ I think I saw I don't care don't care. _____ I don't care, tear me a-part.

G^b B^bm7(13) E^bm7 D^b7 C^b G^b

P.S.I.

(8^{vb})

104

S
A
T
B

I'm gon-na give you I'm gon-na give you I'm gon-na give you I'm gon-na give you
Div. H Keep building until section J

I'm gon-na give you _____ I'm gon-na give you _____ I'm gon-na give you _____ I'm gon-na give you

I'm gon-na give you I'm gon-na give you _____ I'm gon-na give you _____ I'm gon-na give you

I'm gon-na give you _____ I'm gon-na give you _____ I'm gon-na give you _____ I'm gon-na give you

I'm gon-na give you _____ I'm gon-na give you _____ I'm gon-na give you _____ I'm gon-na give you

B^bm7(13) C^b D^b_{sus4} D^b7_{sus4} E^bm

P.S.I.

(8^{vb})

A Sky Full Of Stars 15
SSAATTB Piano Solo Intermediate

116

S Such heav-en - ly view

A Such heav-en - ly view

T Unis. I'm gon-na give you I'm gon-na give you I'm gon-na give you I'm gon-na give you

B Such heav-en - ly view

P.S.I. /g^b C^b D^b_{sus4} D^b_{7sus4} E^b_m

(8^{vb})

120

S Unis. You're such a heav-en - ly view yeah yeah

A You're such a heav-en - ly view yeah yeah

T You're such a heav-en - ly view yeah yeah

B You're such a heav-en - ly view yeah yeah

P.S.I. /g^b C^b D^b_{sus4} D^b_{7sus4} E^b_m

(8^{vb})



SSAATTB

A Sky Full Of Stars

- Coldplay -

Words and Music by Guy Berryman, Jon Buckland,
Will Champion, Chris Martin and Tim Bergling
Arranged by Frank de Vreeze
Original Key

Pop Dance ♩ = 125

A

mf

S2
S1

Soprano
Alto
Tenor
Bass

'Cause you're a sky _____ ooh _____ full of stars.

'Cause you're a sky _____ ooh _____ full of stars.

B

8

p

S2
S1

S
A
T
B

— 'Cause you're a sky _____ Lead ooh _____ full of stars.

'Cause you're a sky, 'Cause you're a sky, _____ full of stars.

Lead

'Cause you're a sky, 'Cause you're a sky, _____ full of stars.

p

— 'Cause you're a sky _____ ooh _____ full of stars.

C

24 light up the path. Lead Unis.

S I don't care, _____ go on and tear me a-part.

A light up the path _____ ooh _____

T light up the path _____ ooh _____

B _____ light up the path _____ ooh _____

28

S _____ I don't care, _____ if you do, _____ ooh ooh _____ if you

A _____ I don't care, I _____ don't care if you do, _____ I don't care, I _____

T _____ I don't care, I _____ don't care if you do, _____ I don't care, I _____

B _____ I don't care, I _____ don't care if you do, _____ I don't care, I _____

33

S do I think I saw you, _____

A _____ don't I don't I don't I don't care, _____ if you do. _____ You you

T _____ don't I don't I don't I don't care, _____ if you do. _____ You you

B _____ don't I don't I don't I don't care, _____ if you do. _____ You you

A Sky Full Of Stars 5
SSAATTB

54 S2 S1 S1 S2

S ooh _____ full of stars. I wan - na die

A 'Cause you're a sky, 'Cause you're a sky, _____ full of stars.

T sky, 'Cause you're a sky, _____ full of stars. _____

B ooh _____ full of stars. I wan - na die

57 S2 S1 S1 S2

S _____ ooh die _____ in your arms. 'Cause you get light-

A I wan-na die _____ in your arms.

T I wan-na die _____ in your arms. _____

B _____ ooh die _____ in your arms. 'Cause you get light-

61 S2 S1 S1 S2

S - - er. ooh _____ you get light -

A 'Cause you get light - - - er the more _____

T 'Cause you get light - - - er the more _____ it gets

B - - er. ooh _____ you get light -

75 Keep building until section G

S
— ooh ooh — if you do

A
— I don't care, I — don't I don't I don't I don't care, — if you do,

T
8
— I don't care, I — don't I don't I don't I don't care, — if you do,

B
— I don't care, I — don't I don't I don't I don't care, — if you do,

80

S
I think I saw you, — I think I see

A
— You you you, — I saw you — you, are a sky — full.

T
8
— You you you, — I saw you — you, are a sky — full.

B
— You you you, — I saw you — you, are a sky — full.

85

S
you, — Div. I think I saw

A
You you you I think — I saw you. Tear me a - part, — I think I saw

T
8
You you you I think — I saw you. Tear me a - part, — I think I saw

B
You you you I think — I saw you. Tear me a - part, — I think I saw

101

S I'm gon-na give
Div.

A you, _____
Unis. I'm gon-na give
Div.

T I don't care don't care. I don't care, tear me a-part. I'm gon-na give
Div.

B I don't care don't care. I don't care, tear me a-part. I'm gon-na give

H

Keep building until section J

105

S you I'm gon-na give you I'm gon-na give you I'm gon-na give you

A you _____
you I'm gon-na give you I'm gon-na give you I'm gon-na give you

T you _____

B you _____

108

S — my heart! I'm gon-na give you I'm gon-na give you I'm gon-na give you

A my heart. You _____
I'm gon-na give you I'm gon-na give you I'm gon-na give you I'm gon-na give you

T my heart. You _____

B — my heart. You _____

122

S
A
T
B

yeah yeah yeah yeah yeah yeah

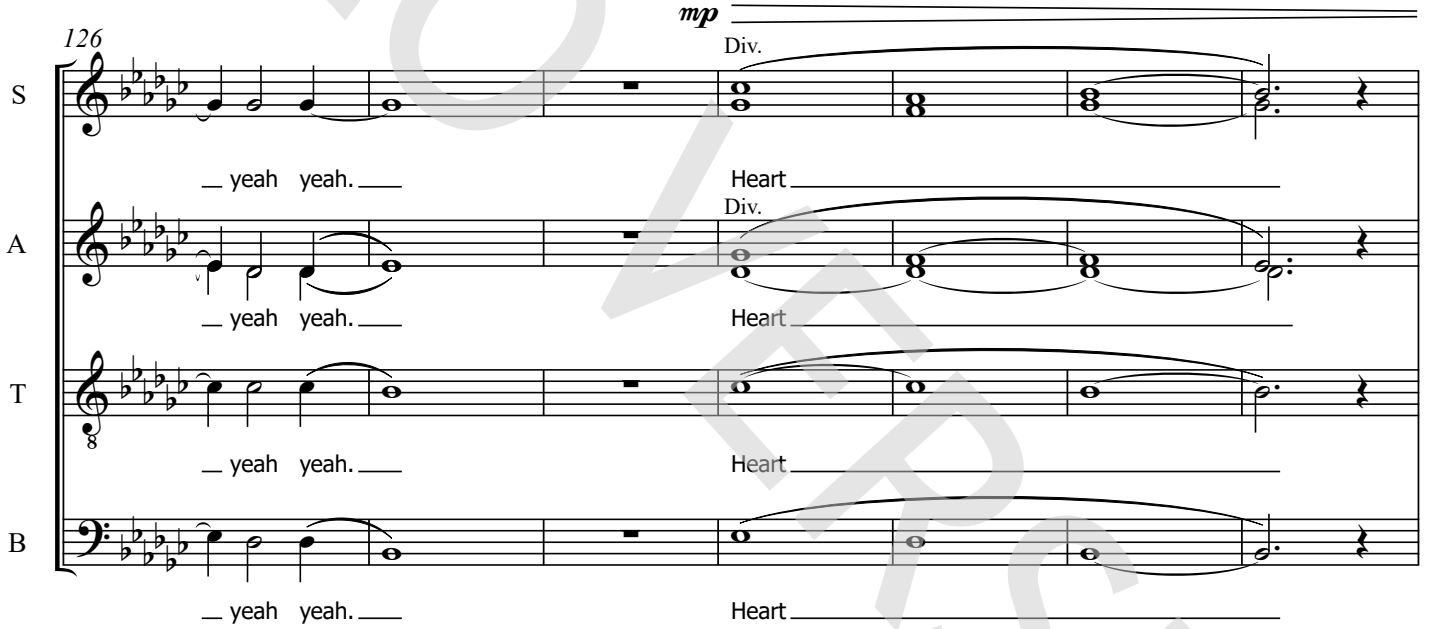


126

mp

S
A
T
B

— yeah yeah. — Heart
— yeah yeah. — Div.
— yeah yeah. — Heart
— yeah yeah. — Heart

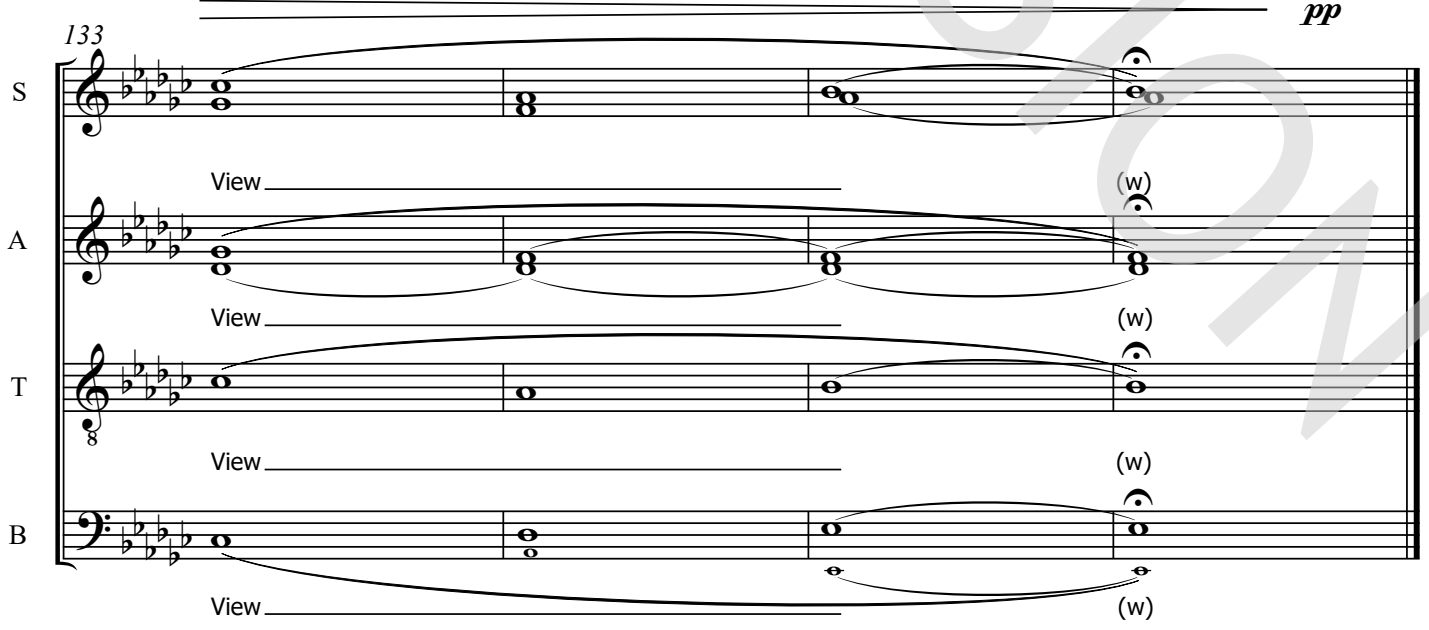


133

pp

S
A
T
B

View (w)
View (w)
View (w)
View (w)





C Instrument

A Sky Full Of Stars

- Coldplay -

Words and Music by *Guy Berryman, Jon Buckland, Will Champion, Chris Martin and Tim Bergling*
Arranged by *Frank de Vreeze*
Original Key

Pop Dance ♩ = 125

A

B

C

C Instr.

28

34

40

45

50

71

77

83

ORIGINAL DO NOT COPY



Bb Instrument

A Sky Full Of Stars

- Coldplay -

Words and Music by Guy Berryman, Jon Buckland,
Will Champion, Chris Martin and Tim Bergling
Arranged by Frank de Vreeze
Original Key

Pop Dance ♩ = 125

A

B

C

Bb Instr.



Eb Instrument

A Sky Full Of Stars

- Coldplay -

Words and Music by *Guy Berryman, Jon Buckland, Will Champion, Chris Martin and Tim Bergling*
Arranged by *Frank de Vreeze*
Original Key

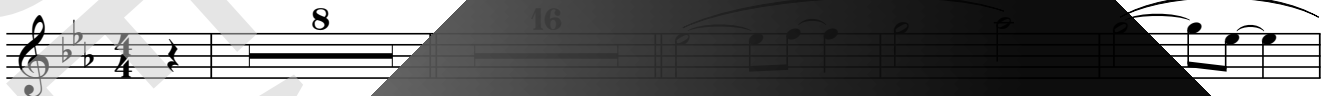
Pop Dance ♩ = 125

A

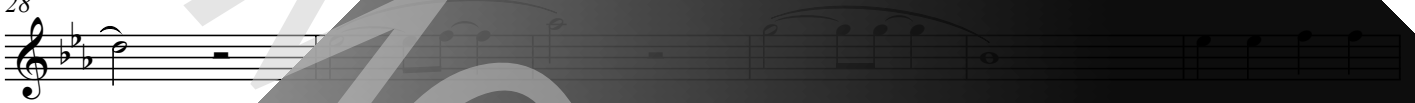
B

C

Eb Instr.



28



34



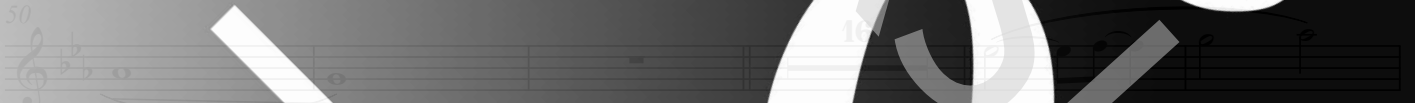
40



45



50



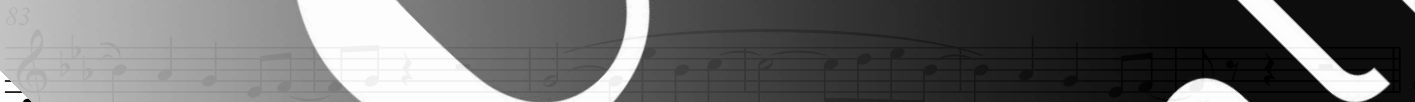
71



77



83





Piano Combo

A Sky Full Of Stars

- Coldplay -

Words and Music by *Guy Berryman, Jon Buckland, Will Champion, Chris Martin and Tim Bergling*
Arranged by *Frank de Vreeze*
Original Key

Pop Dance ♩

ff *8^{va}* *D⁷* *G/c*

G⁺ *B^{m7}(9)* *D⁷* *E^{m7}* *D⁷* *G⁺*

3 *G⁺* *B^{m7}(9)* *D⁷* *E^{m7}* *D⁷* *G⁺*

6 *G⁺/c* *G⁺* *D⁷* *E^{m7}* *D⁷* *G⁺*

8^{va} *B* *E^{m7}* *D⁷* *G⁺* *D⁷* *G⁺*

9 *pp* *8^{va}* *G⁺* *D⁷* *E^{m7}* *D⁷* *G⁺*

8^{va}

chorus online®



Piano Solo Intermediate

A Sky Full Of Stars

- Coldplay -

Words and Music by *Guy Berryman, Jon Buckland, Will Champion, Chris Martin and Tim Bergling*
Arranged by *Frank de Vreeze*
Original Key

Pop Dance

DEMO

Chorus®

5

10

15

ORIGINAL DO NOT COPY



Synthesizer

A Sky Full Of Stars

- Coldplay -

Words and Music by *Guy Berryman, Jon Buckland, Will Champion, Chris Martin and Tim Bergling*
Arranged by *Frank de Vreeze*
Original Key

Pop Dance

A

Warm Pad
mp

B

pp

14

mf

21

Poly Synth
pp

chorus®



02 Acoustic Guitar strumming

A Sky Full Of Stars

- Coldplay -

Words and Music by *Guy Berryman, Jon Buckland, Will Champion, Chris Martin and Tim Bergling*
Arranged by *Frank de Vreeze*
Original Key

Pop Dance ♩ = 125

Guitar

D

Acoustic Guitar

Note Arranger: Guitar Chords differ from Piano!

E



02 Guitar Solo

A Sky Full Of Stars

- Coldplay -

Words and Music by Guy Berryman, Jon Buckland,
Will Champion, Chris Martin and Tim Bergling
Arranged by Frank de Vreeze
Original Key

Pop Dance ♩ = 125

A

B

C

D

Guitar *E. Guitar*

8 16 16

E. Guitar

42

E. Guitar

46

E. Guitar

50

E. Guitar

62

E. Guitar

68

E. Guitar

74

E. Guitar

82

E. Guitar

chorus online

Drumkit/Percussion

Hi-Hat closed
Hi-Hat open
Shareclick
Bassdrum (Kick)
Sharedrum
Hi-Hat foot
High Tom
Mid Tom
Low Tom
Floor Tom
Ride Cymbal
Ride Bell/Cup
Crash Cymbal
Splash Cymbal
Triangle mute
Tambourine Beating
Triangle open

Shaker (eggs)
Claves
High Tmbale
Sleigh Bells
Bell Tree
Maracas
Wind Chimes
Handclap
Conga
Cabasa
Guro
Woodblock High
Woodblock Low
Timbale Low
Agogo High
Cowbell
Conga Cabasa



Drums

A Sky Full Of Stars

- Coldplay -

Words and Music by Guy Berryman, Jon Buckland,
Will Champion, Chris Martin and Tim Bergling
Arranged by Frank de Vreeze
Original Key

Pop Dance ♩ = 125

A

B

C

Drums

Toms

7 15

pp f

pp f

Toms Floor tom

26

15

2 2 2

49

2 2 2

61

2 2 2

F

Hi-Hat closed

69

75

2 2 2 2 2

G

89

Cymbal crash

chorus online

Drumkit/Percussion

High Tom
Hi-Hat closed
Hi-Hat open
Mid Tom
Low Tom
Ride Cymbal
Crash Cymbal
Shareclick
Floor Tom
Ride Bell/Cup
Splash Cymbal
Triangle mute
Bassdrum (Kick)
Hi-Hat foot
Tambourine
Boatring
Triangle open
Sharedrum
Shaker (eggs)
Claves
High Tmbale
Sleigh Bells
Bell Tree
Maracas
Wind Chimes
Handclap
Guro
Woodblock High
Tmbale Low
Agogo High
Cowbell
Conga
Cabasa
Woodblock
Agogo Low



Percussion

A Sky Full Of Stars

- Coldplay -

Words and Music by Guy Berryman, Jon Buckland,
Will Champion, Chris Martin and Tim Bergling
Arranged by Frank de Vreeze
Original Key

Pop Dance ♩ = 125

A

B

Percussion

8 Beat ring
pp

C

D

19 2

E

49 Clap 2

F

69 Beat ring
pp

75 2

G

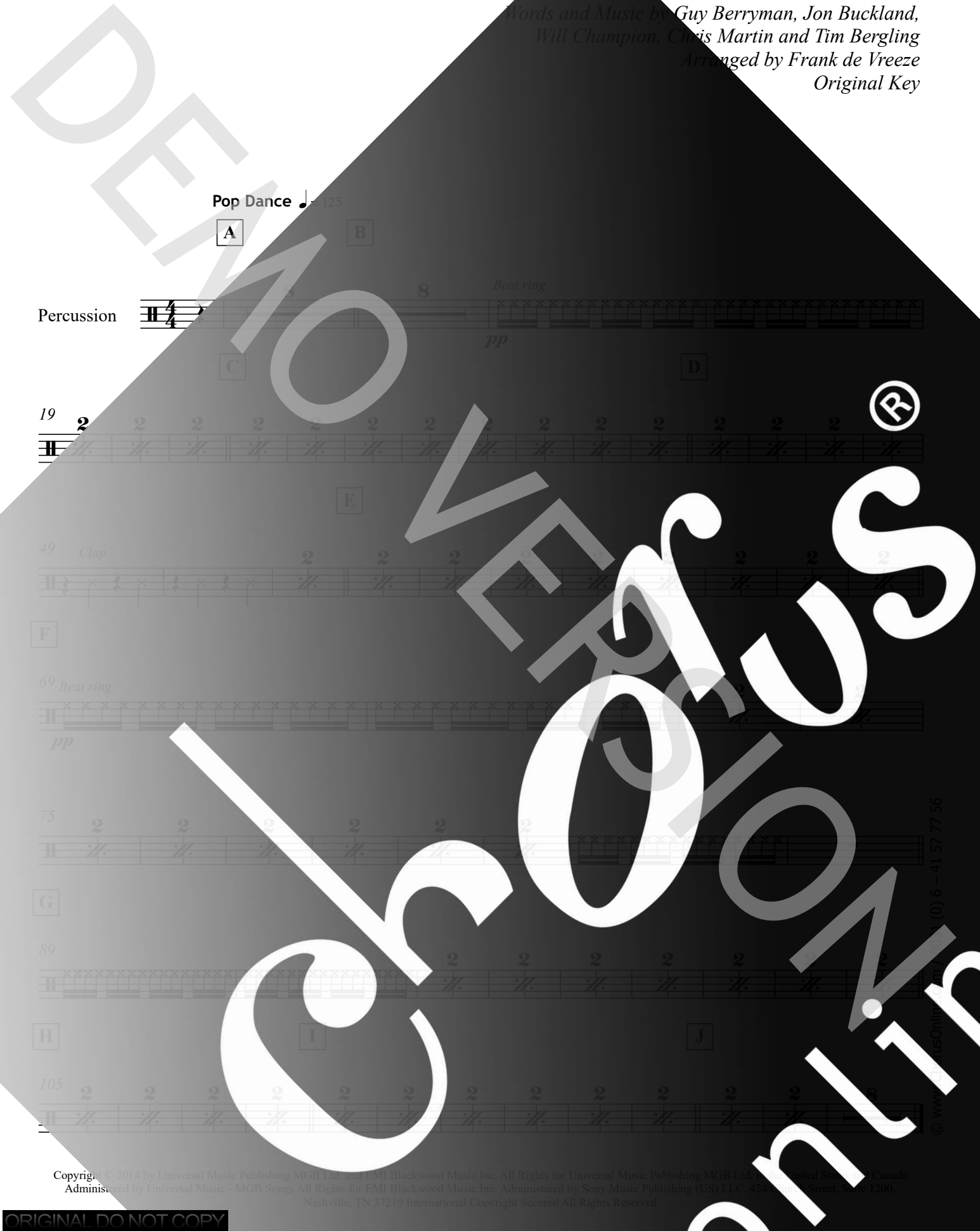
89 2

H

I

J

105 2



© www.chorusonline.com (0) 6 - 41 57 77 56



Leadsheet

A Sky Full Of Stars

- Coldplay -

Words and Music by Guy Berryman, Jon Buckland,
Will Champion, Chris Martin and Tim Bergling
Arranged by Frank de Vreeze
Original Key

Pop Dance ♩ = 125

A

E^b D⁷ G^b/C^b G^b B^m7(13)

B



E^bm⁷ D⁷ G^b/C^b G^b B^m7(13) E^bm⁷ D⁷

G^b/C^b G^b B^m7(13) G^b C^b

sky, 'Cause you're a sky, full of stars. I'm gonna give you my heart.

G^b B^m7(13) E^bm⁷ D⁷ G^b/C^b G^b

'Cause you're a sky, 'Cause you're a sky, full of stars

B^m7(13) E^bm⁷ D⁷ G^b/C^b G^b B^m7(13) E^bm⁷ D⁷

'Cause you're a sky, 'Cause you're a sky, full of stars

ORIGINAL DO NOT COPY

DEMO
ORIGINAL DO NOT COPY
chorus



Lyrics

A Sky Full Of Stars

- Coldplay -

Words and Music by Guy Berryman, Jon Buckland,
Will Champion, Chris Martin and Tim Bergling
Arranged by Frank de Vreeze
Original Key

A: intro

B:

'Cause you're a sky, 'cause you're a sky full of stars
I'm gonna give you my heart
'Cause you're a sky, 'cause you're a sky full of stars
'Cause you light up the path

(Cause you're a sky, ooh full of stars.)
(ooh, full of stars, I'm gonna give you)
(ooh, give you my heart, 'Cause you're a sky)
(ooh full of stars 3x)
(ooh, light up the path, 4x)

C:

I don't care, go on and tear me apart
I don't care if you do, ooh-oooh, ooh
I think I saw you

(ooh I don't care I don't care if you do)
(I don't care, I don't 3x I don't care if you do)
(you 3x, I think I saw you, you are a sky full)

D:

(I think I saw you 2x)
(I think I saw)

E:

'Cause you're a sky, 'cause you're a sky full of stars
I wanna die in your arms,
'Cause you get lighter the more it gets dark
I'm gonna give you my heart,

(Cause you're a sky, ooh full of stars.)
(ooh, full of stars, I wanna die in your arms)
'Cause you get lighter the more it gets dark
(Cause you get lighter the more it's get dark)
I'm gonna give you my heart, 4x)

F:

I don't care, go on and tear me apart
I don't care if you do, ooh-oooh, ooh
I think I saw you

(I don't care, go on and tear me apart)
(I don't care, I don't care if you do)
(you 3x, I think I saw you, you are a sky full)
(you 2x, I think I saw you, I'm gonna give...)

G:

(I don't care, I don't care, I don't care, I don't care)
(I don't care, I don't care, I don't care, I don't care)
(I don't care, I don't care, I don't care, I don't care)
(I don't care, I don't care, I don't care, I don't care)

H:

you my heart 2x (I'm gonna give you 3x my heart) 2x

I:

you're a sky, you're a sky full of stars
Such heavenly view
You're such a heavenly view
Yeah 8x

(you) (I'm gonna 8x)
(you such an heavenly view)
(You're such a heavenly view)

J:

(hear my voice)