



## **Skin - Chorus-LIGHT**

Pag.

|     |  |
|-----|--|
| 02  | Full score combo C instrument                                |
| 10  | Full score combo Bb instrument                               |
| 18  | Full score combo Eb instrument                               |
| 26  | Full score combo 4 extra staves                              |
| 38  | Full score small combo                                       |
| 47  | Full score small combo 2 extra staves                        |
| 59  | Full score vocals (High - Mid - Low) Piano Solo Advanced     |
| 69  | Full score vocals (High - Mid - Low) Piano Solo Intermediate |
| 79  | Vocals (High - Mid - Low)                                    |
| 87  | C instrument   |
| 88  | Bb instrument  |
| 89  | Eb instrument  |
| 90  | Piano Combo  |
| 93  | Piano Solo Advanced  |
| 97  | Piano Solo Intermediate                                      |
| 101 | Synthesizer  |
| 102 | Guitar   |
| 105 | Bassguitar   |
| 107 | Drums  |
| 110 | Percussion   |
| 113 | Leadsheet (melody, lyrics, chords)                           |
| 116 | Lyrics   |

**The index numbers above are based on the original (complete) PDF-file.  
In this smaller DEMO-version, the numbers above do NOT match this file !**



Chorus-LIGHT Combo C

# Skin

- Rag'n'Bone Man -

Words and Music by  
Graham, Coffey, Scott, Needle, Brye  
Arranged by Peter van Lonkhuijsen  
Original Key

DEMO

DEMO

Soul/Blues ♩=86

A

B

High

Mid *mf*  
When I heard that sound, when the walls came down I was thin - king a - bout

Low

C Instr.

Piano Combo *mf*  
D<sup>m</sup> B<sup>7</sup>/d F/c C D<sup>m</sup> B<sup>7</sup>/d

Synthesizer *p*  
Hammond Organ

Guitar

Bass Guitar

Drums

Percussion

# Skin 3

## Chorus-LIGHT Combo C

**[D]**

18

H  
on - ly when it's o - ver the si - lence hits so hard. 'Cause it was al - most love, it was al - most love It was

M  
poi - son on your lips on - ly the si - lence hits so hard. 'Cause it was al - most love, it was al - most love It was

L  
poi - son on your lips on - ly the si - lence hits so hard. 'Cause it was al - most love, it was al - most love It was

C

P.C.  
B<sup>b</sup> C G<sup>m</sup> B<sup>b</sup> D<sup>m</sup> C<sup>add2</sup>

Synth

Gr.

Bass

Dr.

Perc.  
*pp* *mf*

**[E]**

23

H  
al - most love, it was al - most love. *mp* that sound the walls came

M  
al - most love, it was al - most love. *mp* that sound the walls came

L  
al - most love, it was al - most love. *f* When I heard that sound, when the walls came down I was thin - king a - bout you, a - bout

C

P.C.  
B<sup>b</sup> D<sup>m</sup> C<sup>add2</sup> D<sup>m</sup> B<sup>b</sup> F

Synth

Gr.  
*mf*

Bass  
*f*

Dr.

Perc.  
*pp* *f* Handclap

Skin 5  
Chorus-LIGHT Combo C

G

38

H  
— We bleed our - selves in vain, — how tra - gic is — this game, — turn a - round, I'm hol - ding on — to some - one but — the love

M  
— We bleed our - selves in vain, — how tra - gic is — this game, — turn a - round, I'm hol - ding on — to some - one but — the love

L  
—

C  
C<sup>add2</sup> D<sup>m</sup> B<sup>b</sup> C

P.C.  
*mf*

Synth  
Strings  
*mp*

Gtr.

Bass

Dr.  
*mf*

Perc.

42

H  
— is gone. Ca - rry - ing — the load — with wings that feel — like stone, — know - ing that — we near - ly fell — so — far now — it's hard

M  
— is gone. Ca - rry - ing — the load — with wings that feel — like stone, — know - ing that — we near - ly fell — so — far now — it's hard

L  
Oo ————— Oo —————

C  
G<sup>m</sup> D<sup>m</sup> B<sup>b</sup> C

P.C.

Synth

Gtr.

Bass

Dr.

Perc.

# Skin 7

Chorus-LIGHT Combo C

56

H  
old my breath runs cold your ghost I see thin - - -

M  
breath runs cold I'll be thin-king a-bout you, a bout you. When I run out of air to breathe it's your ghost I see I'll be thin-king a-bout

L  
old my breath runs cold your ghost I see thin - - -

C

P.C.  
B $\flat$  F C/e D $^m$  B $\flat$

Synth

Gtr.

Bass

Dr.

Perc.

61

H  
king 'bout you. While I reached for your hand walls

M  
- you, a-bout you While I reached for your hand walls

L  
king 'bout you. While I reached out for your hand, when the walls were ca-ving in,

C

P.C.  
F C/e B $\flat$  D $^m$  C B $\flat$  D $^m$

Synth

Gtr.

Bass

Dr.

Perc.

**J**

*p*

*p*

*mf*

*p*

*mf*

*p*

*mf*

Skin 9  
Chorus-LIGHT Combo C

76

H  
breath runs cold I'll be thin-king a - bout \_\_\_ you, a - bout \_\_\_ you. When I run out of air to breathe it's your ghost I see I'll be thin-king a - bout

M  
breath runs cold I'll be thin-king a - bout \_\_\_ you, a - bout \_\_\_ you. When I run out of air to breathe it's your ghost I see I'll be thin-king a - bout

L  
breath runs cold I'll be thin-king a - bout \_\_\_ you, a - bout \_\_\_ you. When I run out of air to breathe it's your ghost I see I'll be thin-king a - bout

C

P.C.  
B $\flat$  F C/e D $m$  B $\flat$

Synth

Gtr.

Bass

Dr.

Perc.

81

H  
\_ you, a - bout \_\_\_ you. 'Cause it was al - most love, it was al - most \_\_\_ love It was al - most love, it was al - most \_\_\_ love.

M  
\_ you, a - bout \_\_\_ you. 'Cause it was al - most love, it was al - most \_\_\_ love It was al - most love, it was al - most \_\_\_ love.

L  
\_ you, a - bout \_\_\_ you. 'Cause it was al - most love, it was al - most \_\_\_ love It was al - most love, it was al - most \_\_\_ love.

C

P.C.  
F C/e B $\flat$  D $m$  C/e B $\flat$  D $m$  C/e

Synth  
*p* *mf* *p* *mf* *pp*

Gtr.

Bass

Dr.

Perc.

Chorus-LIGHT Combo Bb



# Skin

- Rag'n'Bone Man -

Words and Music by  
Graham, Coffey, Scott, Needle, Brye  
Arranged by Peter van Lonkhuijsen  
Original Key



Soul/Blues ♩ = 86

**A**

**B**

High

Mid *mf*  
When I heard that sound, when the walls came down I was thin - king a - bout

Low

Bb Instr.

Piano Combo *mf*  
D<sup>m</sup> B<sup>7</sup>/d F/c C D<sup>m</sup> B<sup>7</sup>/d

Synthesizer *p*  
Hammond Organ

Guitar

Bass Guitar

Drums

Percussion

Skin 3  
Chorus-LIGHT Combo Bb

18 **D**

H on - ly when it's o - ver the si - lence hits so hard. 'Cause it was al - most love, it was al - most love It was

M poi - son on your lips on - ly the si - lence hits so hard. 'Cause it was al - most love, it was al - most love It was

L poi - son on your lips on - ly the si - lence hits so hard. 'Cause it was al - most love, it was al - most love It was

Bb

P.C. B $\flat$  C G $^m$  B $\flat$  D $^m$  C $^{add2}$

Synth

Gtr.

Bass

Dr. *pp* *mf*

Perc.

23 **E**

H al - most love, it was al - most love. *mp* that sound the walls came

M al - most love, it was al - most love. *mp* that sound the walls came

L al - most love, it was al - most love. *f* When I heard that sound, when the walls came down I was thin - king a - bout you, a - bout

Bb

P.C. B $\flat$  D $^m$  C $^{add2}$  D $^m$  B $\flat$  F

Synth *mp*

Gtr. *mf*

Bass *f*

Dr. *f*

Perc. *pp* Handclap

Skin 5  
Chorus-LIGHT Combo Bb

38 G

H *We bleed our - selves in vain, how tra - gic is this game, turn a - round, I'm hol - ding on to some - one but the love*

M *We bleed our - selves in vain, how tra - gic is this game, turn a - round, I'm hol - ding on to some - one but the love*

L

Bb

P.C. *C<sup>add2</sup> D<sup>m</sup> B<sup>b</sup> C*

Synth *Strings mp*

Gtr.

Bass

Dr. *mf*

Perc.

42

H *is gone. Ca - rry - ing the load with wings that feel like stone, know - ing that we near - ly fell so far now it's hard*

M *is gone. Ca - rry - ing the load with wings that feel like stone, know - ing that we near - ly fell so far now it's hard*

L *Oo*

Bb

P.C. *G<sup>m</sup> D<sup>m</sup> B<sup>b</sup> C*

Synth

Gtr.

Bass

Dr. *mf*

Perc.

Skin 7  
Chorus-LIGHT Combo Bb

56

H  
old my breath runs cold your ghost I see thin - - -

M  
breath runs cold I'll be thin-king a-bout you, a bout you. When I run out of air to breathe it's your ghost I see I'll be thin-king a-bout

L  
old my breath runs cold your ghost I see thin - - -

Bb

P.C.  
B $\flat$  F C/e D $^m$  B $\flat$

Synth

Gtr.

Bass

Dr.

Perc.

61

H  
king 'bout you. While I reached for your hand walls

M  
- you, a-bout you While I reached for your hand walls

L  
king 'bout you. While I reached out for your hand, when the walls were ca-ving in,

Bb

P.C.  
F C/e B $\flat$  D $^m$  C B $\flat$  D $^m$

Synth  
*p* *mf* *p* *mf*

Gtr.

Bass

Dr.  
*p*

Perc.

Skin 9  
Chorus-LIGHT Combo Bb

76

H  
breath runs cold I'll be thin-king a - bout \_\_\_ you, a - bout \_\_\_ you. When I run out of air to breathe it's your ghost I see I'll be thin-king a - bout

M  
breath runs cold I'll be thin-king a - bout \_\_\_ you, a - bout \_\_\_ you. When I run out of air to breathe it's your ghost I see I'll be thin-king a - bout

L  
breath runs cold I'll be thin-king a - bout \_\_\_ you, a - bout \_\_\_ you. When I run out of air to breathe it's your ghost I see I'll be thin-king a - bout

Bb

P.C.  
B $\flat$  F C/e D $^m$  B $\flat$

Synth

Gtr.

Bass

Dr.

Perc.

81

H  
— you, a - bout \_\_\_ you. 'Cause it was al - most love, it was al - most \_\_\_ love. It was al - most love, it was al - most \_\_\_ love.

M  
— you, a - bout \_\_\_ you. 'Cause it was al - most love, it was al - most \_\_\_ love. It was al - most love, it was al - most \_\_\_ love.

L  
— you, a - bout \_\_\_ you. 'Cause it was al - most love, it was al - most \_\_\_ love. It was al - most love, it was al - most \_\_\_ love.

Bb

P.C.  
F C/e B $\flat$  D $^m$  C/e B $\flat$  D $^m$  C/e

Synth  
*p* *mf* *p* *mf* *pp*

Gtr.

Bass

Dr.

Perc.

Chorus-LIGHT Combo Eb



# Skin

- Rag'n'Bone Man -

Words and Music by  
Graham, Coffey, Scott, Needle, Brye  
Arranged by Peter van Lonkhuijsen  
Original Key

DEMO

DEMO

Soul/Blues ♩ = 86

A

B

High

Mid

Low

Eb Instr.

Piano Combo

Synthesizer

Guitar

Bass Guitar

Drums

Percussion

mf

mf

p

D<sup>m</sup> B<sup>7</sup>/d F/c C D<sup>m</sup> B<sup>7</sup>/d

Hammond Organ

When I heard that sound, when the walls came down I was thin - king a - bout

# Skin 3

## Chorus-LIGHT Combo Eb

[D]

18

H  
on - ly when it's o - ver the si - lence hits so hard. 'Cause it was al - most love, it was al - most love It was

M  
poi - son on your lips on - ly the si - lence hits so hard. 'Cause it was al - most love, it was al - most love It was

L  
poi - son on your lips on - ly the si - lence hits so hard. 'Cause it was al - most love, it was al - most love It was

Eb

P.C.  
B<sup>b</sup> C G<sup>m</sup> B<sup>b</sup> D<sup>m</sup> C<sup>add2</sup>

Synth

Gtr.

Bass

Dr.

Perc.

*pp* *mf*

[E]

23

H  
al - most love, it was al - most love. *mp* that sound the walls came

M  
al - most love, it was al - most love. *mp* that sound the walls came

L  
al - most love, it was al - most love. *f* When I heard that sound, when the walls came down I was thin - king a - bout you, a - bout

Eb

P.C.  
B<sup>b</sup> D<sup>m</sup> C<sup>add2</sup> D<sup>m</sup> B<sup>b</sup> F

Synth

Gtr.

Bass

Dr.

Perc.

*pp* *mf* *f* Handclap

38 **G**

H We bleed our - selves in vain, how tra - gic is this game, turn a - round, I'm hol - ding on to some - one but the love

M We bleed our - selves in vain, how tra - gic is this game, turn a - round, I'm hol - ding on to some - one but the love

L

Eb

P.C. Cadd2 Dm B $\flat$  C

Synth *Strings* mp

Gtr.

Bass

Dr. mf

Perc.

42

H is gone. Ca - rry - ing the load with wings that feel like stone, know - ing that we near - ly fell so far now it's hard

M is gone. Ca - rry - ing the load with wings that feel like stone, know - ing that we near - ly fell so far now it's hard

L Oo Oo

Eb

P.C. G $\flat$  Dm B $\flat$  C

Synth

Gtr.

Bass

Dr. mf

Perc.

Skin 7  
Chorus-LIGHT Combo Eb

56

H  
old my breath runs cold your ghost I see thin - - -

M  
breath runs cold I'll be thin-king a-bout you, a bout you. When I run out of air to breathe it's your ghost I see I'll be thin-king a-bout

L  
old my breath runs cold your ghost I see thin - - -

Eb

P.C.  
B<sup>></sup> F C/e D<sup>m</sup> B<sup>></sup>

Synth

Gtr.

Bass

Dr.

Perc.

61

H  
king 'bout you. While I reached for your hand walls

M  
- you, a-bout you While I reached for your hand walls

L  
king 'bout you. While I reached out for your hand, when the walls were ca-ving in,

Eb

P.C.  
F C/e B<sup>></sup> D<sup>m</sup> C B<sup>></sup> D<sup>m</sup>

Synth

Gtr.

Bass

Dr.

Perc.

# Skin 9

Chorus-LIGHT Combo Eb

76

H  
breath runs cold I'll be thin-king a - bout you, a - bout you. When I run out of air to breathe It's your ghost I see I'll be thin-king a - bout

M  
breath runs cold I'll be thin-king a - bout you, a - bout you. When I run out of air to breathe It's your ghost I see I'll be thin-king a - bout

L  
breath runs cold I'll be thin-king a - bout you, a - bout you. When I run out of air to breathe It's your ghost I see I'll be thin-king a - bout

Eb

P.C.  
B $\flat$  F C/e D $^m$  B $\flat$

Synth

Gtr.

Bass

Dr.

Perc.

81

H  
— you, a - bout you. 'Cause it was al - most love, it was al - most love It was al - most love, it was al - most love.

M  
you, a - bout you. 'Cause it was al - most love, it was al - most love It was al - most love, it was al - most love.

L  
— you, a - bout you. 'Cause it was al - most love, it was al - most love It was al - most love, it was al - most love.

Eb

P.C.  
F C/e B $\flat$  D $^m$  C/e B $\flat$  D $^m$  C/e

Synth  
*p* *mf* *p* *mf* *pp*

Gtr.

Bass

Dr.

Perc.



1/8

H — on - ly when its o - ver the sil - lence hits so hard. Cause it was al - most love, it was al - most love. It was al - most love, it was al - most love.

M pol - son on - your lips — on - ly the sil - lence hits so hard. Cause it was al - most love, it was al - most love. It was al - most love, it was al - most love.

L pol - son on - your lips — on - ly the sil - lence hits so hard. Cause it was al - most love, it was al - most love. It was al - most love, it was al - most love. When I

1

2

3

4

B: C G<sup>m</sup> B<sub>7</sub> D<sup>m</sup> Cadd2 B<sub>7</sub> D<sup>m</sup> Cadd2

PC. *mp*

Synth

Gr. *f*

Bass

Dr. *f*

Perc. *pp* *mf* *pp*

**D**

Skin 5  
Chorus-LIGHT 4 extra staves

32

H cold your ghost I see thin - - - king bout you. *mp* It was al - most love, it was al - most - We bleed our - selves in vain,

M cold your ghost I see thin - - - king bout you. *mp* It was al - most love, it was al - most - We bleed our - selves in vain,

L *mp* When I run out of air to breathe it's your ghost I see I'll be thinking a - bout - - - you, a - bout - - - you *mp* It was al - most love, it was al - most -

1

2

3

4

C/e D<sup>m</sup> B<sup>b</sup> F C/e B<sup>b</sup> D<sup>m</sup> C add2

PC.

Synth

Gr.

Bass

Dr.

Perc.

*ppp* *mf*

Skin 7  
Chorus-LIGHT 4 extra staves

45

H *mp* - ly fell so far now it's hard to tell. *H* that

M *mp* - ly fell so far now it's hard to tell. *I* Oo Oo When I heard that sound, when the

L Oo *f* Yeah we came so close, it was all - most love. It was all - most love, it was all - most love. that

1

2

3

4

C G<sup>m</sup> B<sub>b</sub> D<sup>m</sup> C B<sub>b</sub> D<sup>m</sup> C D<sup>m</sup>

P.C. *mp*

Synth

Chr. *f*

Bass

Dr. *f*

Perc. *add mf* *add mf*

Skin 9  
Chorus-LIGHT 4 extra staves

58

H cold your ghost I see thin - - - king bout you.

M — you. When I run out of air to breathe it's your ghost I see I'll be thin-king a - bout — you, a - bout — you

L cold your ghost I see thin - - - king bout you. While I reached out for your hand,

1

2

3

4

PC. C/e Dm B $\flat$  F C/e B $\flat$  D $\flat$

Synth

Gr.

Bass

Dr.

Perc.

*p* *mf* *f* *mf*

# Skin 11

Chorus-LIGHT 4 extra staves

**H**  
heard that sound, when the walls came down I was thin-king a - bout you, a - bout you. When my skin grows old, when my breath runs cold I'll be thin-king a - bout

**M**  
heard that sound, when the walls came down I was thin-king a - bout you, a - bout you. When my skin grows old, when my breath runs cold I'll be thin-king a - bout

**L**  
heard that sound, when the walls came down I was thin-king a - bout you, a - bout you. When my skin grows old, when my breath runs cold I'll be thin-king a - bout

**Gtr.**  
8

**Synth**  
*mf*

**P.C.**  
*mf*

**Dr.**  
*f*

**Perc.**

**Chords:** Dm, Bb, F, C/E, Dm, Bb

82

H — you. *p* Cause it was al - most love, It was al - most love, It was al - most love, It was al - most love.

M you. *p* Cause it was al - most love, It was al - most love, It was al - most love, It was al - most love.

L you. *p* Cause it was al - most love, It was al - most love, It was al - most love, It was al - most love.

1

2

3

4

PC: *p* C/e B $\flat$  Dm C/e B $\flat$  Dm C/e *p*

Synth *p* *mf* *pp*

Gtr. 8

Bass

Dr.

Perc.



Chorus\_LIGHT small Combo

# Skin

- Rag'n'Bone Man -

Words and Music by  
Graham, Coffey, Scott, Needle, Brye  
Arranged by Peter van Lonkhuijsen  
Original Key

DEMO

DEMO

Soul/Blues ♩ = 86

A

B

High

Mid

Low

*mf*

When I heard that sound, when the walls came down I was thin-king a - bout

Piano Combo

*mf*

D<sup>m</sup> B<sup>b</sup>/d F/c C D<sup>m</sup> B<sup>b</sup>/d

Guitar

Bass Guitar

Drums

Percussion

Skin 3  
Chorus\_LIGHT small Combo

16

H  
— Hol - ding me like this, — poi - son on your lips, — on - ly when it's o - ver the si - lence hits so hard.

M  
*mp*  
— Hol - ding me like this, — poi - son on your lips — on - ly — the si - lence hits so hard.

L  
*mp*  
— Hol - ding me like this, — poi - son on your lips — on - ly — the si - lence hits so hard.

G<sup>m</sup> D<sup>m</sup> B<sup>♭</sup> C

P.C.

Gtr.

Bass

Dr.

Perc.

20

H  
— 'Cause it was al - most love, it was al - most love It was al - most love, it was al - most —

M  
— 'Cause it was al - most love, it was al - most love It was al - most love, it was al - most —

L  
— 'Cause it was al - most love, it was al - most love It was al - most love, it was al - most —

G<sup>m</sup> B<sup>♭</sup> D<sup>m</sup> C<sup>add2</sup> B<sup>♭</sup> D<sup>m</sup>

P.C.

*mp*

Gtr.

Bass

Dr.

Perc.  
*pp* *mf*

32

H cold your ghost I see thin - - - king 'bout

M cold your ghost I see thin - - - king 'bout

L - you. When I run out of air to breathe it's your ghost I see I'll be thin-king a - bout you, a - bout

C/e D<sup>m</sup> B<sup>b</sup> F

P.C.

Gtr.

Bass

Dr.

Perc.

36

H *mp* you. It was al - most love, it was al - most We bleed our - selves in vain, how tra - gic is this game,

M *mp* you. It was al - most love, it was al - most We bleed our - selves in vain, how tra - gic is this game,

L *mp* - you It was al - most love, it was al - most

C/e B<sup>b</sup> D<sup>m</sup> C<sup>add2</sup> D<sup>m</sup>

P.C. *mp* *mf*

Gtr.

Bass

Dr. *mf*

Perc. *pp* *mf*

1

48

H  
Oo ————— that

M  
Oo ————— *f* When I heard that sound, when the

L  
— love It was al - most love, it was al - most — love. that

P.C.  
C B $\flat$  D $m$  C D $m$   
*mf*

Gtr.

Bass

Dr.

Perc.  
*pp*  $\triangleleft$  *mf*

52

H  
sound the walls came down grows

M  
walls came down I was thin-king a - bout — you, a - bout — you. When my skin grows old, when my

L  
sound the walls came down grows

P.C.  
B $\flat$  F C/e D $m$

Gtr.

Bass

Dr.

Perc.

64

H  
reached for your hand walls in \_\_\_\_\_ o - - - ther

M  
reached for your hand walls in \_\_\_\_\_ o - - - ther

L  
\_\_\_\_\_ when the walls were ca - ving in, \_\_\_\_\_ when I see you on \_\_\_\_\_ the o -

P.C.  
C B $\flat$  D $m$  A $^{sus4}$  A B $\flat$  D $m$

Gr.

Bass

Dr.

Perc.

68

H  
side we can try \_\_\_\_\_ all o - ver \_\_\_\_\_ a - gain. \_\_\_\_\_ **f** When I heard that sound, when the

M  
side we can try \_\_\_\_\_ all o - ver \_\_\_\_\_ a - gain. \_\_\_\_\_ **f** When I heard that sound, when the

L  
- ther side We can try \_\_\_\_\_ all o - ver \_\_\_\_\_ a - gain. \_\_\_\_\_ **f** When I heard that sound, when the

P.C.  
C G $m$  D $m$  A $^{sus4}$  A D $m$  *mf*

Gr.

Bass

Dr.

Perc.

[K]

80

H  
ghost I see I'll be thin-king a - bout \_\_\_ you, a - bout \_\_\_ you. 'Cause it was al - most love, it was al - most

M  
ghost I see I'll be thin-king a - bout \_\_\_ you, a - bout \_\_\_ you. 'Cause it was al - most love, it was al - most

L  
ghost I see I'll be thin-king a - bout \_\_\_ you, a - bout \_\_\_ you. 'Cause it was al - most love, it was al - most

P.C.  
B $\flat$  F C/e B $\flat$  D $^m$

Gtr.

Bass

Dr.

Perc.

84

H  
\_ love It was al - most \_\_\_ love, it was al - most \_\_\_ love.

M  
\_ love It was al - most \_\_\_ love, it was al - most \_\_\_ love.

L  
\_ love It was al - most \_\_\_ love, it was al - most \_\_\_ love

P.C.  
C/e B $\flat$  D $^m$  C/e

Gtr.

Bass

Dr.

Perc.

Chorus-LIGHT small Combo extra staves

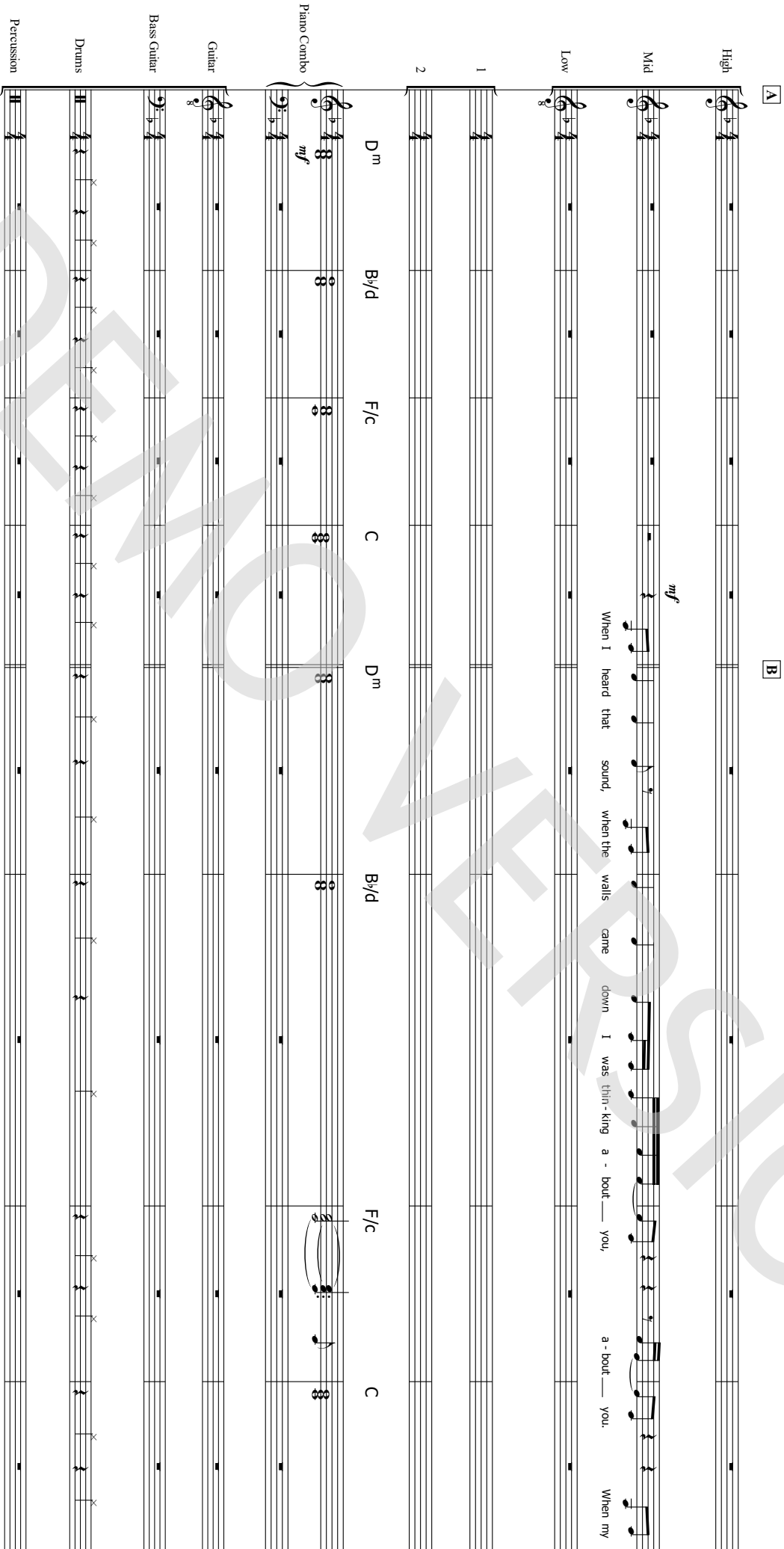
# Skin

- Rag'n'Bone Man -

Words and Music by  
 Graham, Coffey, Scott, Needle, Brye  
 Arranged by Peter van Lonkuijsen  
 Original Key

Soul/Blues  $\text{♩} = 86$

**A** **B**



High

Mid

Low

Piano Combo

Guitar

Bass Guitar

Drums

Percussion

*mf*

When I heard that sound, when the walls came down I was thih-king a - bout you, a - bout you. When my

Dm Bb/d F/c C Dm Bb/d F/c C

1 2

Skin 3  
Chorus-LIGHT small Combo extra staves

1/5

H - der sha - cked by your love — Hol - ding me like this, — poi - son on your lips, — on - ly what's o - ver the si - lence hits so hard. — 'Causet it was

M *mp* Holding me like this, *mp* poison on your lips on - ly — the si - lence hits so hard. — 'Causet it was

L *mp* Holding me like this, *mp* poison on your lips on - ly — the si - lence hits so hard. — 'Causet it was

1

2

P.C. C Gm Dm B<sup>b</sup> C Gm

Gtr.

Bass

Dr.

Perc.

*pp*

27

H  
walls came down grows old my breath runs cold

M  
walls came down grows old my breath runs cold

L  
— you, a-bout— you. When my skin grows old, when my breath runs cold I'll be thin-king a-bout— you. When I

Gtr  
F C/e D<sup>m</sup> B<sup>b</sup> F C/e

Bass

Dr

Perc.

1  
2

3



1

49

H Oo \_\_\_\_\_ that sound \_\_\_\_\_ the walls \_\_\_\_\_ came

M Oo \_\_\_\_\_ *f* When I heard that sound, when the walls came down I was thin-king a - bout \_\_\_\_\_ you, a - bout

L al - most love, it was al - most \_\_\_\_\_ love. that sound \_\_\_\_\_ the walls \_\_\_\_\_ came

1

2

Gtr. *mf* *f*

Bass *f*

Dr. *mf*

Perc. *mf*

B $\flat$  D $m$  C D $m$  B $\flat$  F

© www.ChorusOnline.com / 0031 (0) 6 - 41 57 77 56

Skin 11  
Chorus-LIGHT small Combo extra staves

60

H *p* ghost I see thin - - - king 'bout you. **J** While I reached for your hand walls

M *p* ghost I see I'll be thin-king a-bout you, a-bout you While I reached for your hand walls

L *mf* ghost I see thin - - - king 'bout you. While I reached out for your hand, when the walls were ca-ving in,

1

2

P.C. *mp* B $\flat$  F C/e B $\flat$  D $^m$  C B $\flat$  D $^m$

Gtr.

Bass

Dr.

Perc.

Skin 13  
Chorus-LIGHT small Combo extra staves

**[K]**

H  
heard that sound, when the walls came down I was thin-king a-bout\_\_ you,      a-bout\_\_ you.      When my skin grows old, when my breath runs cold I'll be thin-king a-bout

M  
heard that sound, when the walls came down I was thin-king a - bout\_\_ you,      a - bout\_\_ you.      When my skin grows old, when my breath runs cold I'll be thin-king a - bout

L  
heard that sound, when the walls came down I was thin-king a - bout\_\_ you,      a-bout\_\_ you.      When my skin grows old, when my breath runs cold I'll be thin-king a - bout

1

2

P.C. *mf*      D<sup>m</sup>      B<sup>b</sup>      F      C/e      D<sup>m</sup>      B<sup>b</sup>

Gtr.      ◇      ◇      ◇      ◇      ◇      ◇

Bass

Dr. *f*

Perc.

82

H — you. *p* 'Cause it was al - most love, it was al - most — love It was al - most love, it was al - most — love.

M *p* 'Cause it was al - most love, it was al - most — love It was al - most love, it was al - most — love.

L *p* 'Cause it was al - most love, it was al - most — love It was al - most love, it was al - most — love.

1

2

P.C. *p* C/e B $\flat$  D $m$  C/e B $\flat$  D $m$  C/e

Gtr.  $\diamond$

Bass

Dr.

Perc.



Chorus-LIGHT Piano Solo Advanced

# Skin

- Rag'n'Bone Man -

Words and Music by  
Graham, Coffey, Scott, Needle, Brye  
Arranged by Peter van Lonkhuijsen  
Original Key

Soul/Blues ♩ = 86

**A**

**B**

High

Mid *mf*

Low

When I heard that sound, when the

Piano Solo Advanced

*mf*

D<sup>m</sup> B<sup>♭</sup>/d F/c C D<sup>m</sup>

H

M

L

walls came down I was thin-king a - bout \_\_\_ you, a - bout \_\_\_ you. When my skin grows old, when my

P.S.A.

B<sup>♭</sup>/d F/c C D<sup>m</sup>

© www.ChorusOnline.com / 0031 (0) 6 - 41 57 77 56

Skin 3  
Chorus-LIGHT Piano Solo Advanced

**D**

19

H  
- ver the si - lence hits so hard. 'Cause it was al - most love, it was al - most

M  
on - ly the si - lence hits so hard. 'Cause it was al - most love, it was al - most

L  
on - ly the si - lence hits so hard. 'Cause it was al - most love, it was al - most

P.S.A.  
C G<sup>m</sup> B<sup>b</sup> D<sup>m</sup>

22

H  
- love It was al - most love, it was al - most love.

M  
- love It was al - most love, it was al - most love.

L  
- love It was al - most love, it was al - most love. When I

P.S.A.  
C<sup>add2</sup> B<sup>b</sup> D<sup>m</sup> C<sup>add2</sup> *f*

**E**

25

H  
*mp* that sound the walls came

M  
*mp* that sound the walls came

L  
heard that sound, when the walls came down I was thin - king a - bout you, a - bout

P.S.A.  
D<sup>m</sup> B<sup>b</sup> F *mf*

**F**

**G**

37

H al - most love, it was al - most \_\_\_\_\_ We bleed our - selves in vain, \_\_\_\_\_ how tra - gic is \_\_\_\_\_ this game,

M al - most love, it was al - most \_\_\_\_\_ We bleed our - selves in vain, \_\_\_\_\_ how tra - gic is \_\_\_\_\_ this game,

L al - most love, it was al - most \_\_\_\_\_

P.S.A. *mp* *mf*

B $\flat$  D $^m$  C $^{add2}$  D $^m$

40

H \_\_\_\_\_ turn - a - round, I'm hol - ding on \_\_\_\_\_ to some - one but \_\_\_\_\_ the love \_\_\_\_\_ is gone. Ca - rry - ing \_\_\_\_\_ the load

M \_\_\_\_\_ turn - a - round, I'm hol - ding on \_\_\_\_\_ to some - one but \_\_\_\_\_ the love \_\_\_\_\_ is gone. Ca - rry - ing \_\_\_\_\_ the load

L \_\_\_\_\_

P.S.A. B $\flat$  C G $^m$

43

H \_\_\_\_\_ with wings that feel \_\_\_\_\_ like stone, \_\_\_\_\_ know - ing that \_\_\_\_\_ we near - ly fell \_\_\_\_\_ so \_\_\_\_\_ far now \_\_\_\_\_ it's hard

M \_\_\_\_\_ with wings that feel \_\_\_\_\_ like stone, \_\_\_\_\_ know - ing that \_\_\_\_\_ we near - ly fell \_\_\_\_\_ so \_\_\_\_\_ far now \_\_\_\_\_ it's hard

L \_\_\_\_\_

P.S.A. *mp* *mf*

D $^m$  B $\flat$  C

55

H  
grows old my breath runs

M  
skin grows old, when my breath runs cold I'll be thin-king a - bout you, a bout

L  
grows old my breath runs

P.S.A.  
D<sup>m</sup> B<sup>b</sup> F

58

H  
cold your ghost I see thin - - -

M  
- you. When I run out of air to breathe it's your ghost I see I'll be thin-king a - bout

L  
cold your ghost I see thin - - -

P.S.A.  
C/e D<sup>m</sup> B<sup>b</sup>

61

H  
king 'bout you. While I

M  
- you, a - bout you While I

L  
king 'bout you. While I reached out for your hand,

P.S.A.  
F C/e B<sup>b</sup> D<sup>m</sup>

**J**

*p* *p* *mf* *mp*

Skin 9  
Chorus-LIGHT Piano Solo Advanced

73

H  
— you, a - bout you. When my skin grows old, when my

M  
you, a - bout you. When my skin grows old, when my

L  
— you, a - bout you. When my skin grows old, when my

P.S.A.  
F C/e D<sup>m</sup>

76

H  
breath runs cold I'll be thin-king a - bout you, a - bout you. When I

M  
breath runs cold I'll be thin-king a - bout you, a - bout you. When I

L  
breath runs cold I'll be thin-king a - bout you, a - bout you. When I

P.S.A.  
B<sup>b</sup> F C/e

79

H  
run out of air to breathe It's your ghost I see I'll be thin-king a - bout you, a - bout

M  
run out of air to breathe it's your ghost I see I'll be thin-king a - bout you, a - bout

L  
run out of air to breathe it's your ghost I see I'll be thin-king a - bout you, a - bout

P.S.A.  
D<sup>m</sup> B<sup>b</sup> F

Chorus-LIGHT Piano Solo Intermediate



# Skin

- Rag'n'Bone Man -

Words and Music by  
Graham, Coffey, Scott, Needle, Brye  
Arranged by Peter van Lonkhuijsen  
Original Key

Soul/Blues ♩ = 86

**A**

**B**

High

Mid

Low

Piano Solo Intermediate

*mf*

When I heard that sound, when the

D<sup>m</sup> B<sup>7</sup>/d F/c C D<sup>m</sup>

H

M

L

P.S.I.

walls came down I was thin-king a - bout\_\_\_ you, a - bout\_\_\_ you. When my skin grows old, when my

B<sup>7</sup>/d F/c C D<sup>m</sup>

© www.ChorusOnline.com / 0031 (0) 6 - 41 57 77 56

Skin 3

Chorus-LIGHT Piano Solo Intermediate

**D**

19

H  
- ver the si - lence hits so hard. 'Cause it was al - most love, it was al - most

M  
on - ly the si - lence hits so hard. 'Cause it was al - most love, it was al - most

L  
on - ly the si - lence hits so hard. 'Cause it was al - most love, it was al - most

P.S.I.  
C G<sup>m</sup> B<sup>b</sup> D<sup>m</sup>

*mp*

22

H  
- love It was al - most love, it was al - most love.

M  
- love It was al - most love, it was al - most love.

L  
- love It was al - most love, it was al - most love. When I

P.S.I.  
C<sup>add2</sup> B<sup>b</sup> D<sup>m</sup> C<sup>add2</sup>

*f*

**E**

25

H  
*mp* that sound the walls came

M  
*mp* that sound the walls came

L  
heard that sound, when the walls came down I was thin - king a - bout you, a - bout

P.S.I.  
D<sup>m</sup> B<sup>b</sup> F

*mf*

**F** **G**

37

H al - most love, it was al - most \_\_\_\_\_ We bleed our - selves in vain, \_\_\_\_\_ how tra - gic is \_\_\_\_\_ this game,

M al - most love, it was al - most \_\_\_\_\_ We bleed our - selves in vain, \_\_\_\_\_ how tra - gic is \_\_\_\_\_ this game,

L al - most love, it was al - most \_\_\_\_\_

P.S.I. *mp* *mf*

B $\flat$  D $^m$  C $^{add2}$  D $^m$

40

H \_\_\_\_\_ turn a - round, I'm hol - ding on \_\_\_\_\_ to some - one but \_\_\_\_\_ the love \_\_\_\_\_ is gone. Ca - rry - ing \_\_\_\_\_ the load

M \_\_\_\_\_ turn a - round, I'm hol - ding on \_\_\_\_\_ to some - one but \_\_\_\_\_ the love \_\_\_\_\_ is gone. Ca - rry - ing \_\_\_\_\_ the load

L \_\_\_\_\_

P.S.I. B $\flat$  C G $^m$

43

H \_\_\_\_\_ with wings that feel like stone, \_\_\_\_\_ know - ing that \_\_\_\_\_ we near - ly fell \_\_\_\_\_ so \_\_\_\_\_ far now \_\_\_\_\_ it's hard

M \_\_\_\_\_ with wings that feel like stone, \_\_\_\_\_ know - ing that \_\_\_\_\_ we near - ly fell \_\_\_\_\_ so \_\_\_\_\_ far now \_\_\_\_\_ it's hard

L Oo \_\_\_\_\_ Oo \_\_\_\_\_

P.S.I. D $^m$  B $\flat$  C

55

H  
grows old my breath runs

M  
skin grows old, when my breath runs cold I'll be thin-king a - bout you, a bout

L  
grows old my breath runs

P.S.I.  
D<sup>m</sup> B<sup>b</sup> F

58

H  
cold your ghost I see thin - - -

M  
- you. When I run out of air to breathe it's your ghost I see I'll be thin-king a - bout

L  
cold your ghost I see thin - - -

P.S.I.  
C/e D<sup>m</sup> B<sup>b</sup>

61

H  
king 'bout you. While I

M  
- you, a - bout you While I

L  
king 'bout you. While I reached out for your hand,

P.S.I.  
F C/e B<sup>b</sup> D<sup>m</sup>  
mp

**J**

*p*

*p*

*mf*

Skin 9  
Chorus-LIGHT Piano Solo Intermediate

73

H  
— you, a - bout you. When my skin grows old, when my

M  
you, a - bout you. When my skin grows old, when my

L  
— you, a - bout you. When my skin grows old, when my

P.S.I.  
F C/e D<sup>m</sup>

76

H  
breath runs cold I'll be thin-king a - bout you, a - bout you. When I

M  
breath runs cold I'll be thin-king a - bout you, a - bout you. When I

L  
breath runs cold I'll be thin-king a - bout you, a - bout you. When I

P.S.I.  
B<sup>b</sup> F C/e

79

H  
run out of air to breathe It's your ghost I see I'll be thin-king a - bout you, a - bout

M  
run out of air to breathe it's your ghost I see I'll be thin-king a - bout you, a - bout

L  
run out of air to breathe it's your ghost I see I'll be thin-king a - bout you, a - bout

P.S.I.  
D<sup>m</sup> B<sup>b</sup> F



Chorus-LIGHT

# Skin

- Rag'n'Bone Man -

Words and Music by  
Graham, Coffer, Scott, Needle, Brye  
Arranged by Peter van Lonkhuijsen  
Original Key

Soul/Blues ♩ = 86

**A**

**B**

High

Mid

Low

*mf*

When I heard that sound, when the

6

H

M

L

walls came down I was thin-king a - bout \_\_\_ you, a - bout \_\_\_ you. When my

9

H

M

L

skin grows old, when my breath runs cold I'll be thin-king a - bout \_\_\_ you, a bout

**D**

20

H — 'Cause it was al - most love, it was al - most \_\_\_\_ love It was

M — 'Cause it was al - most love, it was al - most \_\_\_\_ love It was

L — 'Cause it was al - most love, it was al - most \_\_\_\_ love It was

**E**

23

H al - most love, it was al - most \_\_\_\_ love. *mp* that

M al - most love, it was al - most \_\_\_\_ love. *mp* that

L al - most love, it was al - most \_\_\_\_ love. *f* When I heard that sound, when the

26

H sound the walls came down

M sound the walls came down

L walls came down I was thin-king a - bout \_\_\_\_ you, a - bout \_\_\_\_ you. When my

29

H grows old my breath runs

M grows old my breath runs

L skin grows old, when my breath runs cold I'll be thin-king a - bout \_\_\_\_ you, a bout

41

H  
- ding on\_\_ to some - one but\_\_ the love\_\_ is gone. Ca - rry - ing\_\_ the load

M  
- ding on\_\_ to some - one but\_\_ the love\_\_ is gone. Ca - rry - ing\_\_ the load

L

43

H  
\_ with wings that feel\_\_ like stone,\_\_\_\_\_ know - ing that\_\_ we near -

M  
\_ with wings that feel\_\_ like stone,\_\_\_\_\_ know - ing that\_\_ we near -

L

Oo \_\_\_\_\_

45

H  
- ly fell\_\_ so\_\_ far now\_\_ it's hard\_\_ to tell.

M  
- ly fell\_\_ so\_\_ far now\_\_ it's hard\_\_ to tell.

L

Oo \_\_\_\_\_ Yeah we

**H** 47 *mp*

H  
Oo \_\_\_\_\_ Oo \_\_\_\_\_

M *mp*

M  
Oo \_\_\_\_\_ Oo \_\_\_\_\_

L

came so\_\_ close, it was al - most\_\_ love It was al - most love, it was al - most

J

61  
H king 'bout you. While I reached for your  
M — you, a-bout — you While I reached for your  
L king 'bout you. While I reached out for your hand, —

*p* *p* *mf*

65  
H hand walls in — o - - - ther  
M hand walls in — o - - - ther  
L when the walls were ca - ving in, — when I see you on — the o -

68  
H side we can try — all o - ver — a - gain.  
M side we can try — all o - ver — a - gain.  
L - ther side — We can try — all o - ver — a - gain.

K

70  
H — When I heard that sound, when the  
M — When I heard that sound, when the  
L — When I heard that sound, when the

*f* *f* *f*

Skin 9  
Chorus-LIGHT

80

H  
ghost I see I'll be thin - king a - bout\_\_\_ you, a - bout

M  
ghost I see I'll be thin - king a - bout\_\_\_ you, a - bout

L  
ghost I see I'll be thin - king a - bout\_\_\_ you, a - bout

82

H  
— you. *p* 'Cause it was al - most love, it was al - most\_\_\_

M  
you. *p* 'Cause it was al - most love, it was al - most\_\_\_

L  
you. *p* 'Cause it was al - most love, it was al - most\_\_\_

84

H  
— love It was al - most\_\_\_ love, it was al - most\_\_\_

M  
— love It was al - most\_\_\_ love, it was al - most\_\_\_

L  
— love It was al - most\_\_\_ love, it was al - most\_\_\_

86

H  
— love.

M  
— love.

L  
— love

C Instrument

# Skin

- Rag'n'Bone Man -

Words and Music by  
Graham, Coffey, Scott, Needle, Brye  
Arranged by Peter van Lonkhuijsen  
Original Key



Soul/Blues ♩ = 86

**A**

**B**

**C**

**D**

C Instr.

Musical staff with measures 1-4. Measure 1 has a '4' above it. Measure 2 has an '8' above it. Measure 3 has an '8' above it. Measure 4 has a '4' above it.

**E**

**F**

**G**

**H**

Musical staff with measures 5-8. Measure 5 has a '12' above it. Measure 6 has a '2' above it. Measure 7 has an '8' above it. Measure 8 has a '4' above it.

**I**

Musical staff with measures 9-12. Measure 9 has a '51' above it. Dynamics: *mf*

Musical staff with measures 13-16.

Musical staff with measures 17-20.

**J**

**K**

Musical staff with measures 21-24. Measure 21 has an '8' above it.

Musical staff with measures 25-28. Measure 25 has a '73' above it.

Musical staff with measures 29-32. Measure 29 has a '77' above it.

Musical staff with measures 33-36. Measure 35 has a '5' above it.

© www.ChorusOnline.com / 0031 (0) 6 - 41 57 77 56

Bb Instrument

# Skin

- Rag'n'Bone Man -

Words and Music by  
Graham, Coffey, Scott, Needle, Brye  
Arranged by Peter van Lonkhuijsen  
Original Key



Soul/Blues ♩ = 86

**A** **B** **C** **D**

4 8 8 4

Bb Instr.

**E** **F** **G** **H**

25 12 2 8 4

**I**

51 *mf*

55

59

**J** **K**

63 8

73

77

81 5

© www.ChorusOnline.com / 0031 (0) 6 - 41 57 77 56

E♭ Instrument

# Skin

- Rag'n'Bone Man -

Words and Music by  
Graham, Coffey, Scott, Needle, Brye  
Arranged by Peter van Lonkhuijsen  
Original Key



Soul/Blues ♩ = 86

**A** **B** **C** **D**

4 8 8 4

E♭ Instr.

**E** **F** **G** **H**

25 12 2 8 4

**I**

51 *mf*

55

59

**J** **K**

63 8

73

77

81 5

Piano Combo

# Skin

- Rag'n'Bone Man -

Words and Music by  
Graham, Coffey, Scott, Needle, Brye  
Arranged by Peter van Lonkhuijsen  
Original Key



Soul/Blues ♩ = 86

**A**

D<sup>m</sup>

B<sup>b</sup>/d

F/c

C

**B**

D<sup>m</sup>

B<sup>b</sup>/d

Musical notation for system A and B, measures 1-6. Treble clef, 4/4 time, mf dynamics. Chords: D<sup>m</sup>, B<sup>b</sup>/d, F/c, C, D<sup>m</sup>, B<sup>b</sup>/d.

7

F/c

C

D<sup>m</sup>

B<sup>b</sup>/d

F/c

C

Musical notation for system C, measures 7-12. Treble clef, 4/4 time. Chords: F/c, C, D<sup>m</sup>, B<sup>b</sup>/d, F/c, C.

**C**

13

D<sup>m</sup>

B<sup>b</sup>

C

G<sup>m</sup>

D<sup>m</sup>

B<sup>b</sup>

*no synth: play small notes*

*mf*

Musical notation for system D, measures 13-18. Treble clef, 4/4 time, mf dynamics. Chords: D<sup>m</sup>, B<sup>b</sup>, C, G<sup>m</sup>, D<sup>m</sup>, B<sup>b</sup>.

**D**

19

C

G<sup>m</sup>

B<sup>b</sup>

D<sup>m</sup>

C<sup>add2</sup>

B<sup>b</sup>

D<sup>m</sup>

C<sup>add2</sup>

*mp*

Musical notation for system E, measures 19-24. Treble clef, 4/4 time, mp dynamics. Chords: C, G<sup>m</sup>, B<sup>b</sup>, D<sup>m</sup>, C<sup>add2</sup>, B<sup>b</sup>, D<sup>m</sup>, C<sup>add2</sup>.

**E**

25

D<sup>m</sup>

B<sup>b</sup>

F

C/e

*mf*

Musical notation for system F, measures 25-30. Treble clef, 4/4 time, mf dynamics. Chords: D<sup>m</sup>, B<sup>b</sup>, F, C/e.

© www.ChorusOnline.com / 0031 (0) 6 - 41 57 77 56

57 F C/e D<sup>m</sup> B<sup>b</sup>

61 F C/e **J** B<sup>b</sup> D<sup>m</sup> C B<sup>b</sup> D<sup>m</sup> A<sup>sus4</sup> A

*mp*

67 B<sup>b</sup> D<sup>m</sup> C G<sup>m</sup> D<sup>m</sup> A<sup>sus4</sup> A D<sup>m</sup> **K**

*mf*

72 B<sup>b</sup> F C/e D<sup>m</sup> B<sup>b</sup>

77 F C/e D<sup>m</sup> B<sup>b</sup> F

82 C/e B<sup>b</sup> D<sup>m</sup> C/e B<sup>b</sup> D<sup>m</sup> C/e

*p*



# Skin

- Rag'n'Bone Man -

Words and Music by  
Graham, Coffey, Scott, Needle, Brye  
Arranged by Peter van Lonkhuijsen  
Original Key

Soul/Blues ♩ = 86

**A**

D<sup>m</sup>

B<sup>b</sup>/d

F/c

C

**B**

D<sup>m</sup>

B<sup>b</sup>/d

7 F/c

C

D<sup>m</sup>

B<sup>b</sup>/d

F/c

C

**C**

13 D<sup>m</sup>

B<sup>b</sup>

C

G<sup>m</sup>

17 D<sup>m</sup>

B<sup>b</sup>

C

G<sup>m</sup>

**D**

21 B<sup>b</sup>

D<sup>m</sup>

C<sup>add2</sup>

B<sup>b</sup>

D<sup>m</sup>

C<sup>add2</sup>

H

47  $B^b$   $D^m$  C  $B^b$   $D^m$  C

*mp*

I

51  $D^m$   $B^b$  F

*mf*

54 C/e  $D^m$   $B^b$

*mf*

57 F C/e  $D^m$

*mf*

60  $B^b$  F C/e

*mf*

J

63  $B^b$   $D^m$  C  $B^b$   $D^m$   $A^{sus4}$  A

*mp*



# Skin

- Rag'n'Bone Man -

Words and Music by  
Graham, Coffey, Scott, Needle, Brye  
Arranged by Peter van Lonkhuijsen  
Original Key

Soul/Blues ♩ = 86

**A**

D<sup>m</sup>

B<sup>b</sup>/d

F/c

C

**B**

D<sup>m</sup>

B<sup>b</sup>/d

7

F/c

C

D<sup>m</sup>

B<sup>b</sup>/d

F/c

C

**C**

13

D<sup>m</sup>

B<sup>b</sup>

C

G<sup>m</sup>

D<sup>m</sup>

B<sup>b</sup>

**D**

19

C

G<sup>m</sup>

B<sup>b</sup>

D<sup>m</sup>

C<sup>add2</sup>

B<sup>b</sup>

D<sup>m</sup>

C<sup>add2</sup>

**E**

25

D<sup>m</sup>

B<sup>b</sup>

F

© www.ChorusOnline.com / 0031 (0) 6 - 41 57 77 56

**H**

47  $B^b$   $D^m$  C  $B^b$   $D^m$  C

*mp*

**I**

51  $D^m$   $B^b$  F

*mf*

54 C/e  $D^m$   $B^b$

*mf*

57 F C/e  $D^m$

*mf*

60  $B^b$  F C/e

**J**

63  $B^b$   $D^m$  C  $B^b$   $D^m$   $A^{sus4}$  A

*mp*

Synthesizer

# Skin

- Rag'n'Bone Man -

Words and Music by  
Graham, Coffey, Scott, Needle, Brye  
Arranged by Peter van Lonkhuijsen  
Original Key



Soul/Blues ♩ = 86

A

B

Hammond Organ

*p*

Strings

7

C

13

D

19

E

25

*mp*

J

Musical notation for section J, measures 63-66. The piece is in 4/4 time with a key signature of one flat (B-flat). The right hand plays a melody of quarter notes, and the left hand plays a bass line of quarter notes. Dynamics include piano (p) and mezzo-forte (mf). A large watermark 'PREFERSION' is visible across the page.

Musical notation for section J, measures 67-70. The piece is in 4/4 time with a key signature of one flat (B-flat). The right hand plays a melody of quarter notes, and the left hand plays a bass line of quarter notes. Dynamics include piano (p) and mezzo-forte (mf). A large watermark 'PREFERSION' is visible across the page.

K

Musical notation for section K, measures 71-74. The piece is in 4/4 time with a key signature of one flat (B-flat). The right hand plays a melody of quarter notes, and the left hand plays a bass line of quarter notes. Dynamics include mezzo-forte (mf). A large watermark 'PREFERSION' is visible across the page.

Musical notation for section K, measures 75-78. The piece is in 4/4 time with a key signature of one flat (B-flat). The right hand plays a melody of quarter notes, and the left hand plays a bass line of quarter notes. Dynamics include mezzo-forte (mf). A large watermark 'PREFERSION' is visible across the page.

Musical notation for section K, measures 79-82. The piece is in 4/4 time with a key signature of one flat (B-flat). The right hand plays a melody of quarter notes, and the left hand plays a bass line of quarter notes. Dynamics include mezzo-forte (mf). A large watermark 'PREFERSION' is visible across the page.

Musical notation for section K, measures 83-86. The piece is in 4/4 time with a key signature of one flat (B-flat). The right hand plays a melody of quarter notes, and the left hand plays a bass line of quarter notes. Dynamics include piano (p) and piano-pianissimo (pp). A large watermark 'PREFERSION' is visible across the page.



Guitar

# Skin

- Rag'n'Bone Man -

Words and Music by  
Graham, Coffey, Scott, Needle, Brye  
Arranged by Peter van Lonkhuijsen  
Original Key

Soul/Blues ♩ = 86

**A**

**B**

Guitar

El. Guitar (clean)

**C**

**D**

**E**

© www.ChorusOnline.com / 0031 (0) 6 - 41 57 77 56



Bass Guitar

# Skin

- Rag'n'Bone Man -

Words and Music by  
Graham, Coffey, Scott, Needle, Brye  
Arranged by Peter van Lonkhuijsen  
Original Key

Soul/Blues ♩ = 86

**A** **B** **C** **D**

4 8 8 4

Bass Guitar

**E**  
25 D<sup>m</sup> B<sup>b</sup> F C/e

*f*

29 D<sup>m</sup> B<sup>b</sup> F C/e

33 D<sup>m</sup> B<sup>b</sup> F C/e

**F** **G** **H**

37 2 8 4

**I**  
51 D<sup>m</sup> B<sup>b</sup> F C/e

*f*

55 D<sup>m</sup> B<sup>b</sup> F C/e

# Drumkit/Percussion

High Tom  
Hi-Hat closed  
Hi-Hat open  
Mid Tom  
Low Tom  
Ride Cymbal  
Crash Cymbal  
Triangle mute  
Bassdrum (Kick)  
Snareclick  
Snare drum  
Hi-Hat Foot  
Floor Tom  
Ride Bell/Cup  
Splash Cymbal  
Tambourine Beating  
Triangle open

Shaker (eggs)  
Claves  
High Timbale  
Sleigh Bells  
Bell Tree  
Maracas  
Wind Chimes  
Handclap  
Güiro  
Woodblock High  
Timbale Low  
Agogo High  
Cowbell  
Conga  
Cabasa  
Woodblock Low  
Agogo Low



Drums

# Skin

- Rag'n'Bone Man -

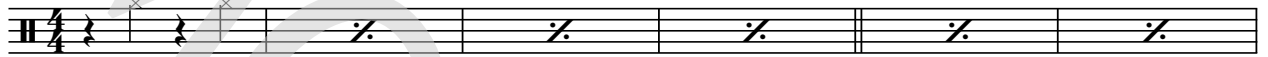
Words and Music by  
Graham, Coffey, Scott, Needle, Brye  
Arranged by Peter van Lonkhuijsen  
Original Key

Soul/Blues ♩ = 86

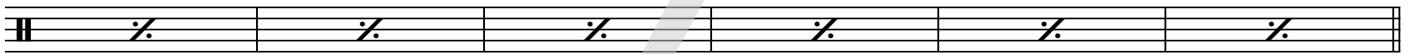
**A**

**B**

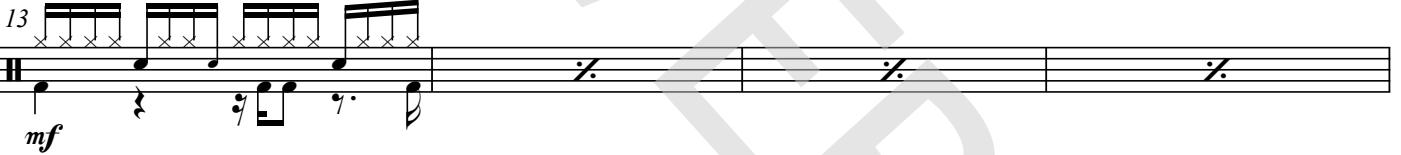
Drums



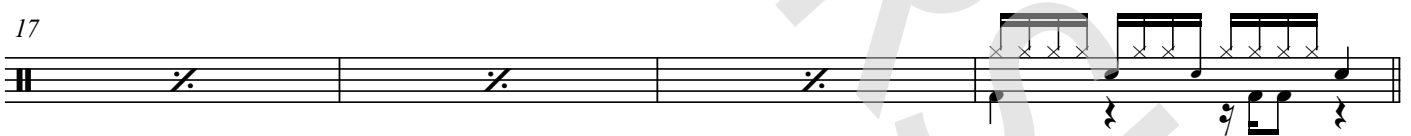
7



**C**

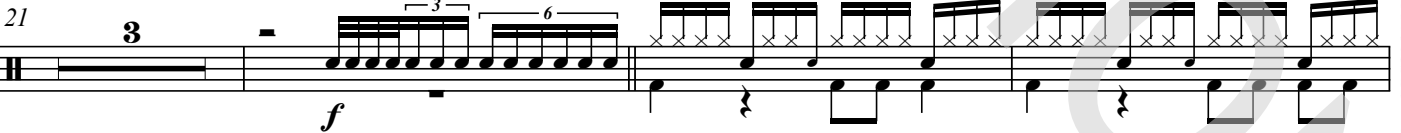


17

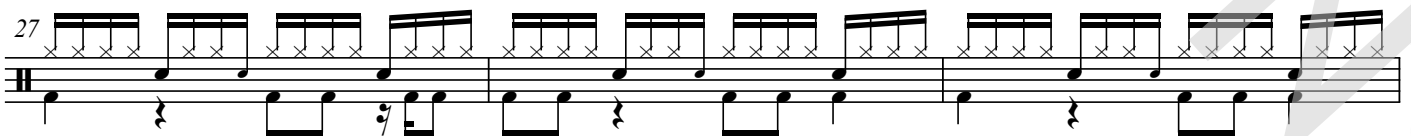


**D**

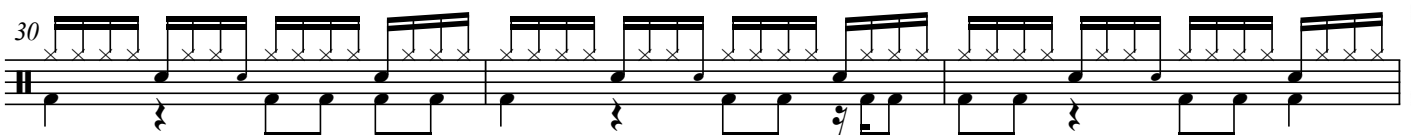
**E**



27



30



4 Skin  
Drums

**J**

63

*p*

67

**K**

71

*f*

74

77

80

83

5

# Drumkit/Percussion

High Tom  
Hi-Hat closed  
Hi-Hat open  
Mid Tom  
Low Tom  
Ride Cymbal  
Crash Cymbal  
Triangle mute  
Shareclick  
Floor Tom  
Ride Bell/Cup  
Splash Cymbal  
Triangle open  
Bassdrum (Kick)  
Hi-Hat Foot  
Tambourine Beating  
Snaredrum

Shaker (eggs)  
Claves  
High Timbale  
Sleigh Bells  
Bell Tree  
Maracas  
Wind Chimes  
Handclap  
Güiro  
Woodblock High  
Timbale Low  
Agogo High  
Cowbell  
Conga  
Cabasa  
Woodblock Low  
Agogo Low



Percussion

# Skin

- Rag'n'Bone Man -

Words and Music by  
Graham, Coffey, Scott, Needle, Brye  
Arranged by Peter van Lonkhuijsen  
Original Key

Soul/Blues ♩ = 86

**A** **B**

Percussion *Susp. cymbal*

4 6

*pp* *mf*

**C** **D**

13 7

*pp* *mf*

**E**

22 2 *Handclap*

*pp*

27

31

**F**

35

*pp* *mf*

**G** **H**

39 7

*pp* *mf*

© www.ChorusOnline.com / 0031 (0) 6 - 41 57 77 56



Leadsheet

# Skin

- Rag'n'Bone Man -

Words and Music by  
Graham, Coffey, Scott, Needle, Brye  
Arranged by Peter van Lonkhuijsen  
Original Key

Soul/Blues ♩ = 86

**A**

D<sup>m</sup> B<sup>b</sup>/d F/c C D<sup>m</sup>

When I heard that sound, when the

6 B<sup>b</sup>/d F/c C D<sup>m</sup>

walls came down I was thin-king a - bout \_\_\_ you, a - bout \_\_\_ you. When my skin grows old, when my

10 B<sup>b</sup>/d F/c C

breath runs cold I'll be thin-king a - bout \_\_\_ you, a bout \_\_\_ you. Se - conds from my heart,

**C** 13 D<sup>m</sup> B<sup>b</sup> C

\_\_\_ a bu - llet from the dark. \_\_\_ Help - less I \_\_\_ su - rren - der, sha - ckled by \_\_\_ your love

16 G<sup>m</sup> D<sup>m</sup> B<sup>b</sup>

\_\_\_ Hol - ding me \_\_\_ like this, \_\_\_ poi - son on \_\_\_ you lips, \_\_\_ on - ly when it's o -

19 C G<sup>m</sup> **D** B<sup>b</sup> D<sup>m</sup>

- ver the si - lence hits so hard. \_\_\_ 'Cause it was al - most love, it was al - most

43 Dm B $\flat$  C

— with wings that feel like stone, know - ing that we near - ly fell so far now it's hard

46 G $m$  B $\flat$  D $m$  C

— to tell. Yeah we came so close, it was al - most love It was

49 B $\flat$  D $m$  C I D $m$

al - most love, it was al - most love. When I heard that sound, when the

52 B $\flat$  F C/e

walls came down I was thin-king a - bout you, a - bout you. When my

55 D $m$  B $\flat$  F

skin grows old, when my breath runs cold I'll be thin-king a - bout you, a bout

58 C/e D $m$  B $\flat$

— you. When I run out of air to breathe it's your ghost I see I'll be thin-king a - bout

61 F C/e J B $\flat$  D $m$  C

— you a - bout you. While I reached out for your hand,

Lyrics

# Skin

- Rag'n'Bone Man -

*Words and Music by  
Graham, Coffey, Scott, Needle, Brye  
Arranged by Peter van Lonkhuijsen  
Original Key*



A:  
Intro

B:  
When I heard that sound, when the walls came down I was thinking about you, about you.  
When my skin grows old, when my breath runs cold I'll be thinking about you, about you.

C:  
Seconds from my heart, a bullet in the dark, helpless I surrender, shackled by your love.  
Holding me like this, poison on your lips, only when it's over, the silence hits so hard.

D:  
'Cause it was almost love, it was almost love. It was almost love, it was almost love.

E:  
When I heard that sound, when the walls came down I was thinking about you, about you.  
When my skin grows old, when my breath runs cold I'll be thinking about you, about you.  
When I run out of air to breathe it's your ghost I see, I'll be thinking about you, about you.

F:  
It was almost love, it was almost

G:  
We bleed ourselves in vain, how tragic is this game,  
turn around, I'm holding on to someone but the love is gone.  
Carrying the load with wings that feel like stone,  
knowing that we nearly fell so far now it's hard to tell.

H:  
Yeah we came so close, it was almost love. It was almost love, it was almost love.

I:  
When I heard that sound, when the walls came down I was thinking about you, about you.  
When my skin grows old, when my breath runs cold I'll be thinking about you, about you.  
When I run out of air to breathe it's your ghost I see, I'll be thinking about you, about you.

J:  
While I reached out for your hand, when the walls were caving in,  
When I see you on the other side, we can try all over again.

K:  
When I heard that sound, when the walls came down I was thinking about you, about you.  
When my skin grows old, when my breath runs cold I'll be thinking about you, about you.  
When I run out of air to breathe it's your ghost I see, I'll be thinking about you, about you.  
'Cause it was almost love, it was almost love. It was almost love, it was almost love.