



Skin - Chorus-LIGHT

Pag.

02	Full score combo C instrument
10	Full score combo Bb instrument
18	Full score combo Eb instrument
26	Full score combo 4 extra staves
38	Full score small combo
47	Full score small combo 2 extra staves
59	Full score vocals (High - Mid - Low) Piano Solo Advanced
69	Full score vocals (High - Mid - Low) Piano Solo Intermediate
79	Vocals (High - Mid - Low)
87	C instrument
88	Bb instrument
89	Eb instrument
90	Piano Combo
93	Piano Solo Advanced
97	Piano Solo Intermediate
101	Synthesizer
102	Guitar
105	Bassguitar
107	Drums
110	Percussion
113	Leadsheet (melody, lyrics, chords)
116	Lyrics

**The index numbers above are based on the original (complete) PDF-file.
In this smaller DEMO-version, the numbers above do NOT match this file !**



Chorus-LIGHT Combo C

Skin

- Rag'n'Bone Man -

Words and Music by
Graham, Coffey, Scott, Needle, Brye
Arranged by Peter van Lonkhuijsen
Original Key

DEMO

DEMO

Soul/Blues ♩=86

A

B

High

Mid *mf*
When I heard that sound, when the walls came down I was thin - king a - bout

Low

C Instr.

Piano Combo *mf*
D^m B⁷/d F/c C D^m B⁷/d

Synthesizer *p*
Hammond Organ

Guitar

Bass Guitar

Drums

Percussion

Skin 3

Chorus-LIGHT Combo C

D

18

H
on - ly when it's o - ver the si - lence hits so hard. 'Cause it was al - most love, it was al - most love It was

M
poi - son on your lips on - ly the si - lence hits so hard. 'Cause it was al - most love, it was al - most love It was

L
poi - son on your lips on - ly the si - lence hits so hard. 'Cause it was al - most love, it was al - most love It was

C

P.C.
B^b C G^m B^b D^m C^{add2}

Synth

Gr.
Bass

Dr.
Perc.

pp *mf*

E

23

H
al - most love, it was al - most love. *mp* that sound the walls came

M
al - most love, it was al - most love. *mp* that sound the walls came

L
al - most love, it was al - most love. *f* When I heard that sound, when the walls came down I was thin - king a - bout you, a - bout

C

P.C.
B^b D^m C^{add2} D^m B^b F

Synth

Gr.
Bass

Dr.
Perc.

pp *f* *mf* *Handclap*

Skin 5
Chorus-LIGHT Combo C

G

38

H
— We bleed our - selves in vain, — how tra - gic is — this game, — turn a - round, I'm hol - ding on — to some - one but — the love

M
— We bleed our - selves in vain, — how tra - gic is — this game, — turn a - round, I'm hol - ding on — to some - one but — the love

L
—

C
C^{add2} D^m B^b C

P.C.
mf

Synth
Strings
mp

Gtr.

Bass

Dr.
mf

Perc.

42

H
— is gone. Ca - rry - ing — the load — with wings that feel — like stone, — know - ing that — we near - ly fell — so — far now — it's hard

M
— is gone. Ca - rry - ing — the load — with wings that feel — like stone, — know - ing that — we near - ly fell — so — far now — it's hard

L
Oo ————— Oo —————

C
G^m D^m B^b C

P.C.

Synth

Gtr.

Bass

Dr.

Perc.

Skin 7

Chorus-LIGHT Combo C

56

H
old my breath runs cold your ghost I see thin - - -

M
breath runs cold I'll be thin-king a-bout you, a bout you. When I run out of air to breathe it's your ghost I see I'll be thin-king a-bout

L
old my breath runs cold your ghost I see thin - - -

C

P.C.
B \flat F C/e D m B \flat

Synth

Gtr.

Bass

Dr.

Perc.

61

H
king 'bout you. While I reached for your hand walls

M
- you, a-bout you While I reached for your hand walls

L
king 'bout you. While I reached out for your hand, when the walls were ca-ving in,

C

P.C.
F C/e B \flat D m C B \flat D m

Synth

Gtr.

Bass

Dr.

Perc.

Skin 9

Chorus-LIGHT Combo C

76

H
breath runs cold I'll be thin-king a - bout ___ you, a - bout ___ you. When I run out of air to breathe it's your ghost I see I'll be thin-king a - bout

M
breath runs cold I'll be thin-king a - bout ___ you, a - bout ___ you. When I run out of air to breathe it's your ghost I see I'll be thin-king a - bout

L
breath runs cold I'll be thin-king a - bout ___ you, a - bout ___ you. When I run out of air to breathe it's your ghost I see I'll be thin-king a - bout

C

P.C.
B \flat F C/e D m B \flat

Synth

Gtr.

Bass

Dr.

Perc.

81

H
_ you, a - bout ___ you. 'Cause it was al - most love, it was al - most ___ love It was al - most love, it was al - most ___ love.

M
_ you, a - bout ___ you. 'Cause it was al - most love, it was al - most ___ love It was al - most love, it was al - most ___ love.

L
_ you, a - bout ___ you. 'Cause it was al - most love, it was al - most ___ love It was al - most love, it was al - most ___ love.

C

P.C.
F C/e B \flat D m C/e B \flat D m C/e

Synth
p *mf* *p* *mf* *pp*

Gtr.

Bass

Dr.

Perc.



Chorus-LIGHT Combo Bb

Skin

- Rag'n'Bone Man -

Words and Music by
Graham, Coffey, Scott, Needle, Brye
Arranged by Peter van Lonkhuijsen
Original Key



Soul/Blues ♩ = 86

A

B

High

Mid *mf*
When I heard that sound, when the walls came down I was thin - king a - bout

Low

Bb Instr.

Piano Combo *mf*
D^m B⁷/d F/c C D^m B⁷/d

Synthesizer *p*
Hammond Organ

Guitar

Bass Guitar

Drums

Percussion

Skin 3
Chorus-LIGHT Combo Bb

18

D

H: on - ly when it's o - ver the si - lence hits so hard. 'Cause it was al - most love, it was al - most love It was

M: poi - son on your lips on - ly the si - lence hits so hard. 'Cause it was al - most love, it was al - most love It was

L: poi - son on your lips on - ly the si - lence hits so hard. 'Cause it was al - most love, it was al - most love It was

Bb: B \flat C G m B \flat D m C add2

P.C. *mp*

Synth

Gtr.

Bass

Dr. *pp* *mf*

Perc.

23

E

H: al - most love, it was al - most love. that sound the walls came

M: al - most love, it was al - most love. that sound the walls came

L: al - most love, it was al - most love. When I heard that sound, when the walls came down I was thin - king a - bout you, a - bout

Bb: B \flat D m C add2 D m B \flat F

P.C. *mf*

Synth *mp*

Gtr. *mf*

Bass *f*

Dr. *f*

Perc. *pp* Handclap

Skin 5
Chorus-LIGHT Combo Bb

38 G

H — We bleed our - selves in vain, — how tra - gic is — this game, — turn a - round, I'm hol - ding on — to some - one but — the love

M — We bleed our - selves in vain, — how tra - gic is — this game, — turn a - round, I'm hol - ding on — to some - one but — the love

L —

Bb —

P.C. *C*add2 *Dm* *B^b* *C*

Synth *Strings* *mp*

Gtr. —

Bass —

Dr. *mf*

Perc. —

42

H — is gone. Ca - rry - ing — the load — with wings that feel — like stone, — know - ing that — we near - ly fell — so — far now — it's hard

M — is gone. Ca - rry - ing — the load — with wings that feel — like stone, — know - ing that — we near - ly fell — so — far now — it's hard

L — Oo — Oo —

Bb —

P.C. *G^m* *Dm* *B^b* *C*

Synth —

Gtr. —

Bass —

Dr. *mf*

Perc. —

Skin 7
Chorus-LIGHT Combo Bb

56

H
old my breath runs cold your ghost I see thin - - -

M
breath runs cold I'll be thin-king a-bout you, a bout you. When I run out of air to breathe it's your ghost I see I'll be thin-king a-bout

L
old my breath runs cold your ghost I see thin - - -

Bb

P.C.
B \flat F C/e D m B \flat

Synth

Gtr.

Bass

Dr.

Perc.

61

H
king 'bout you. While I reached for your hand walls

M
- you, a-bout you While I reached for your hand walls

L
king 'bout you. While I reached out for your hand, when the walls were ca-ving in,

Bb

P.C.
F C/e B \flat D m C B \flat D m

Synth
p *mf* *p* *mf*

Gtr.

Bass

Dr.
p

Perc.

Skin 9
Chorus-LIGHT Combo Bb

76

H
breath runs cold I'll be thin-king a - bout ___ you, a - bout ___ you. When I run out of air to breathe It's your ghost I see I'll be thin-king a - bout

M
breath runs cold I'll be thin-king a - bout ___ you, a - bout ___ you. When I run out of air to breathe It's your ghost I see I'll be thin-king a - bout

L
breath runs cold I'll be thin-king a - bout ___ you, a - bout ___ you. When I run out of air to breathe It's your ghost I see I'll be thin-king a - bout

Bb

P.C.
B \flat F C/e D m B \flat

Synth

Gtr.

Bass

Dr.

Perc.

81

H
___ you, a - bout ___ you. 'Cause it was al - most love, it was al - most ___ love. It was al - most love, it was al - most ___ love.

M
___ you, a - bout ___ you. 'Cause it was al - most love, it was al - most ___ love. It was al - most love, it was al - most ___ love.

L
___ you, a - bout ___ you. 'Cause it was al - most love, it was al - most ___ love. It was al - most love, it was al - most ___ love.

Bb

P.C.
F C/e B \flat D m C/e B \flat D m C/e

Synth
p *mf* *p* *mf* *pp*

Gtr.

Bass

Dr.

Perc.

Chorus-LIGHT Combo Eb



Skin

- Rag'n'Bone Man -

Words and Music by
Graham, Coffey, Scott, Needle, Brye
Arranged by Peter van Lonkhuijsen
Original Key

DEMO

DEMO

Soul/Blues ♩ = 86

A

B

High

Mid

Low

Eb Instr.

Piano Combo

Synthesizer

Guitar

Bass Guitar

Drums

Percussion

mf

When I heard that sound, when the walls came down I was thin - king a - bout

p

Hammond Organ

D^m B⁷/d F/c C D^m B⁷/d

Skin 3

Chorus-LIGHT Combo Eb

[D]

18

H
on - ly when it's o - ver the si - lence hits so hard. 'Cause it was al - most love, it was al - most love It was

M
poi - son on your lips on - ly the si - lence hits so hard. 'Cause it was al - most love, it was al - most love It was

L
poi - son on your lips on - ly the si - lence hits so hard. 'Cause it was al - most love, it was al - most love It was

Eb

P.C.
B^b C G^m B^b D^m C^{add2}

Synth

Gtr.

Bass

Dr.

Perc.

pp *mf*

[E]

23

H
al - most love, it was al - most love. *mp* that sound the walls came

M
al - most love, it was al - most love. *mp* that sound the walls came

L
al - most love, it was al - most love. *f* When I heard that sound, when the walls came down I was thin - king a - bout you, a - bout

Eb

P.C.
B^b D^m C^{add2} D^m B^b F

Synth

Gtr.

Bass

Dr.

Perc.

pp *mf* *f* Handclap

Skin 5
Chorus-LIGHT Combo Eb

38 **G**

H We bleed our - selves in vain, how tra - gic is this game, turn a - round, I'm hol - ding on to some - one but the love

M We bleed our - selves in vain, how tra - gic is this game, turn a - round, I'm hol - ding on to some - one but the love

L

Eb

P.C. Cadd2 Dm B \flat C

Synth *Strings* mp

Gtr.

Bass

Dr. mf

Perc.

42

H is gone. Ca - rry - ing the load with wings that feel like stone, know - ing that we near - ly fell so far now it's hard

M is gone. Ca - rry - ing the load with wings that feel like stone, know - ing that we near - ly fell so far now it's hard

L Oo Oo

Eb

P.C. G \flat Dm B \flat C

Synth

Gtr.

Bass

Dr.

Perc.

Skin 7
Chorus-LIGHT Combo Eb

56

H
old my breath runs cold your ghost I see thin - - -

M
breath runs cold I'll be thin-king a-bout you, a bout you. When I run out of air to breathe it's your ghost I see I'll be thin-king a-bout

L
old my breath runs cold your ghost I see thin - - -

Eb

P.C.
B[>] F C/e D^m B[>]

Synth

Gtr.

Bass

Dr.

Perc.

61

H
king 'bout you. While I reached for your hand walls

M
- you, a-bout you While I reached for your hand walls

L
king 'bout you. While I reached out for your hand, when the walls were ca-ving in,

Eb

P.C.
F C/e B[>] D^m C B[>] D^m

Synth

Gtr.

Bass

Dr.

Perc.

Skin 9
Chorus-LIGHT Combo Eb

76

H
breath runs cold I'll be thin-king a - bout you, a - bout you. When I run out of air to breathe It's your ghost I see I'll be thin-king a - bout

M
breath runs cold I'll be thin-king a - bout you, a - bout you. When I run out of air to breathe It's your ghost I see I'll be thin-king a - bout

L
breath runs cold I'll be thin-king a - bout you, a - bout you. When I run out of air to breathe It's your ghost I see I'll be thin-king a - bout

Eb

P.C.
B \flat F C/e D m B \flat

Synth

Gtr.

Bass

Dr.

Perc.

81

H
- you, a - bout you. 'Cause it was al - most love, it was al - most love It was al - most love, it was al - most love.

M
you, a - bout you. 'Cause it was al - most love, it was al - most love It was al - most love, it was al - most love.

L
- you, a - bout you. 'Cause it was al - most love, it was al - most love It was al - most love, it was al - most love

Eb

P.C.
F C/e B \flat D m C/e B \flat D m C/e

Synth
p *mf* *p* *mf* *pp*

Gtr.

Bass

Dr.

Perc.

Skin 3
Chorus-LIGHT 4 extra staves

1/8

H — on - ly when its o - ver the sil - lence hits_ so hard_ Cause it was al - most love, it was al - most_ love It was al - most love, it was al - most_ love.

M pol - son on_ your lips_ on - ly_ the sil - lence hits_ so hard_ Cause it was al - most love, it was al - most_ love It was al - most love, it was al - most_ love.

L pol - son on_ your lips_ on - ly_ the sil - lence hits_ so hard_ Cause it was al - most love, it was al - most_ love It was al - most love, it was al - most_ love. When I

1 2 3 4

B: C Gm B: Dm Cadd2 B: Dm Cadd2

PC. *mp*

Synth

Gr. *f*

Bass

Dr. *f*

Perc. *pp* *mf* *pp*

D

Skin 5
Chorus-LIGHT 4 extra staves

32

H cold your ghost I see thin - - - king bout you. *mp* It was al - most love, it was al - most - We bleed our - selves in vain,

M cold your ghost I see thin - - - king bout you. *mp* It was al - most love, it was al - most - We bleed our - selves in vain,

L *mp* When I run out of air to breathe it's your ghost I see I'll be thinking a - bout you, a - bout you *mp* It was al - most love, it was al - most -

1

2

3

4

C/e D^m B^b F C/e B^b D^m C add2

PC.

Synth

Gr.

Bass

Dr.

Perc.

ppp *mf*

Skin 7
Chorus-LIGHT 4 extra staves

45

H *mp* - ly fell — so — far now it's hard — to tell. **H** *mp* Oo — — — — — that

M - ly fell — so — far now it's hard — to tell. *mp* Oo — — — — — **I** *f* When I heard that sound, when the

L Oo — — — — — *f* Yeah we came so — close, it was al - most — love It was al - most love, it was al - most — love. that

1
2
3
4

C G^m B_b D^m C B_b D^m C D^m

P.C. *mp*

Synth

Ch. *f*

Bass

Dr. *f*

Perc. *add mf* *add mf*

Skin 9
Chorus-LIGHT 4 extra staves

58

H cold your ghost I see thin - - - king bout you.

M — you. When I run out of air to breathe it's your ghost I see I'll be thin-king a - bout — you, a - bout — you

L cold your ghost I see thin - - - king bout you. While I I

1 2 3 4

C/e Dm B \flat F C/e B \flat D \flat

PC.

Synth

Gr.

Bass

Dr.

Perc.

p *mf* *f* *mf*

While I reached out for your hand,

Skin 11

Chorus-LIGHT 4 extra staves

H
heard that sound, when the walls came down I was thin-king a - bout you, a - bout you. When my skin grows old, when my breath runs cold I'll be thin-king a - bout

M
heard that sound, when the walls came down I was thin-king a - bout you, a - bout you. When my skin grows old, when my breath runs cold I'll be thin-king a - bout

L
heard that sound, when the walls came down I was thin-king a - bout you, a - bout you. When my skin grows old, when my breath runs cold I'll be thin-king a - bout

Gtr.
8

Synth
mf

P.C.
mf

Dr.
f

Perc.

Chords: Dm, Bb, F, C/E, Dm, Bb

82

H — you. *p* Cause it was al - most love, It was al - most love, It was al - most love, It was al - most love.

M you. *p* Cause it was al - most love, It was al - most love, It was al - most love, It was al - most love.

L you. *p* Cause it was al - most love, It was al - most love, It was al - most love, It was al - most love.

1
2
3
4

PC: C/e *p* B \flat Dm C/e B \flat Dm C/e *p*

Synth *p* *mf* *p* *mf* *pp*

Gtr. 8

Bass

Dri.

Perc.



Chorus_LIGHT small Combo

Skin

- Rag'n'Bone Man -

Words and Music by
Graham, Coffey, Scott, Needle, Brye
Arranged by Peter van Lonkhuijsen
Original Key

DEMO

DEMO

Soul/Blues ♩ = 86

A

B

High

Mid *mf*
When I heard that sound, when the walls came down I was thin-king a - bout

Low

Piano Combo

mf

D^m B^b/d F/c C D^m B^b/d

Guitar

Bass Guitar

Drums

Percussion

Skin 3
Chorus_LIGHT small Combo

16

H
— Hol - ding me like this, — poi - son on your lips, — on - ly when it's o - ver the si - lence hits so hard.

M
mp
— Hol - ding me like this, — poi - son on your lips — on - ly — the si - lence hits so hard.

L
mp
— Hol - ding me like this, — poi - son on your lips — on - ly — the si - lence hits so hard.

G^m D^m B[♭] C

P.C.

Gtr.

Bass

Dr.

Perc.

20

H
— 'Cause it was al - most love, it was al - most love It was al - most love, it was al - most —

M
— 'Cause it was al - most love, it was al - most love It was al - most love, it was al - most —

L
— 'Cause it was al - most love, it was al - most love It was al - most love, it was al - most —

G^m B[♭] D^m C^{add2} B[♭] D^m

P.C.

mp

Gtr.

Bass

Dr.

Perc.
pp *mf*

32

H cold your ghost I see thin - - - king 'bout

M cold your ghost I see thin - - - king 'bout

L - you. When I run out of air to breathe it's your ghost I see I'll be thin-king a - bout you, a - bout

C/e D^m B^b F

P.C.

Gtr.

Bass

Dr.

Perc.

36

H you. It was al - most love, it was al - most We bleed our - selves in vain, how tra - gic is this game,

M you. It was al - most love, it was al - most We bleed our - selves in vain, how tra - gic is this game,

L - you It was al - most love, it was al - most

C/e B^b D^m C^{add2} D^m

P.C.

Gtr.

Bass

Dr.

Perc.

pp *mf*

1

48

H
Oo ————— that

M
Oo ————— *f* When I heard that sound, when the

L
— love It was al - most love, it was al - most — love. that

P.C.
C B \flat D m C D m
mf

Gtr.

Bass

Dr.

Perc.
pp \triangleleft *mf*

52

H
sound the walls came down grows

M
walls came down I was thin-king a - bout — you, a - bout — you. When my skin grows old, when my

L
sound the walls came down grows

P.C.
B \flat F C/e D m

Gtr.

Bass

Dr.

Perc.

64

H
reached for your hand walls in _____ o - - - ther

M
reached for your hand walls in _____ o - - - ther

L
_____ when the walls were ca - ving in, _____ when I see you on _____ the o -

P.C.
C B \flat D m A sus4 A B \flat D m

Gr.

Bass

Dr.

Perc.

68

H
side we can try _____ all o - ver _____ a - gain. _____ **f** When I heard that sound, when the

M
side we can try _____ all o - ver _____ a - gain. _____ **f** When I heard that sound, when the

L
- ther side We can try _____ all o - ver _____ a - gain. _____ **f** When I heard that sound, when the

P.C.
C G m D m A sus4 A D m *mf*

Gr.

Bass

Dr.

Perc.

[K]

80

H
ghost I see I'll be thin-king a - bout ___ you, a - bout ___ you. 'Cause it was al - most love, it was al - most ___

M
ghost I see I'll be thin-king a - bout ___ you, a - bout ___ you. 'Cause it was al - most love, it was al - most ___

L
ghost I see I'll be thin-king a - bout ___ you, a - bout ___ you. 'Cause it was al - most love, it was al - most ___

P.C.
B \flat F C/e B \flat D m

Gtr.

Bass

Dr.

Perc.

84

H
___ love It was al - most ___ love, it was al - most ___ love.

M
___ love It was al - most ___ love, it was al - most ___ love.

L
___ love It was al - most ___ love, it was al - most ___ love.

P.C.
C/e B \flat D m C/e

Gtr.

Bass

Dr.

Perc.



Chorus-LIGHT small Combo extra staves

Skin

- Rag'n'Bone Man -

Words and Music by
Graham, Coffey, Scott, Needle, Brye
Arranged by Peter van Lonkuijsen
Original Key

Soul/Blues ♩ = 86

A **B**

High

Mid

Low

1

2

Dm Bb/d F/c C Dm Bb/d F/c C

Piano Combo *mf*

Guitar

Bass Guitar

Drums

Percussion

When I heard that sound, when the walls came down I was thih-king a - bout ___ you, a - bout ___ you. When my



Skin 3
Chorus-LIGHT small Combo extra staves

1/5

H - der sha - cked by your love — Hol - ding me like this, — poi - son on your lips, — on - ly what's o - ver the si - lence hits so hard. — 'Causet it was

M *mp* Holding me like this, *mp* poison on your lips on - ly — the si - lence hits so hard. — 'Causet it was

L *mp* Holding me like this, *mp* poison on your lips on - ly — the si - lence hits so hard. — 'Causet it was

1

2

P.C. C Gm Dm B^b C Gm

Gtr.

Bass

Dr.

Perc.

pp

27

H
walls came down grows old my breath runs cold

M
walls came down grows old my breath runs cold

L
— you, a-bout— you. When my skin grows old, when my breath runs cold I'll be thin-king a-bout— you. When I

Gtr
F C/e D^m B^b F C/e

Bass

Dr

Perc.

1
2

3

Skin 11
Chorus-LIGHT small Combo extra staves

60

H *p* ghost I see thin - - - king 'bout you. **J** While I reached for your hand walls

M *p* ghost I see I'll be thin-king a-bout you, a-bout you While I reached for your hand walls

L *mf* ghost I see thin - - - king 'bout you. While I reached out for your hand, when the walls were ca-ving in,

1

2

P.C. *mp* B_b F C/e B_b D^m C B_b D^m

Gtr.

Bass

Dr.

Perc.

Skin 13
Chorus-LIGHT small Combo extra staves

[K]

H
heard that sound, when the walls came down I was thin-king a-bout__ you, a-bout__ you. When my skin grows old, when my breath runs cold I'll be thin-king a-bout

M
heard that sound, when the walls came down I was thin-king a - bout__ you, a - bout__ you. When my skin grows old, when my breath runs cold I'll be thin-king a - bout

L
heard that sound, whenthe walls came down I was thin-king a - bout__ you, a-bout__ you. When my skin grows old, whenmy breath runs cold I'll be thin-king a - bout

1

2

P.C. *mf* D^m B^b F C/e D^m B^b

Gtr. ◇ ◇ ◇ ◇ ◇ ◇

Bass

Dr. *f*

Perc.

82

H *p* — you. 'Cause it was al - most love, it was al - most — love. It was al - most love, it was al - most — love.

M *p* you. 'Cause it was al - most love, it was al - most — love. It was al - most love, it was al - most — love.

L *p* you. 'Cause it was al - most love, it was al - most — love. It was al - most love, it was al - most — love.

1

2

P.C. *p* C/e B \flat D m C/e B \flat D m C/e

Gtr. \diamond

Bass

Dr.

Perc.



Chorus-LIGHT Piano Solo Advanced

Skin

- Rag'n'Bone Man -

Words and Music by
Graham, Coffey, Scott, Needle, Brye
Arranged by Peter van Lonkhuijsen
Original Key

Soul/Blues ♩ = 86

A

B

High

Mid *mf*

Low

When I heard that sound, when the

D^m B^{♭/d} F/c C D^m

Piano Solo Advanced *mf*

6

H

M

L

walls came down I was thin-king a - bout ___ you, a - bout ___ you. When my skin grows old, when my

B^{♭/d} F/c C D^m

P.S.A.

© www.ChorusOnline.com / 0031 (0) 6 - 41 57 77 56

Skin 3
Chorus-LIGHT Piano Solo Advanced

D

19

H
- ver the si - lence hits so hard. 'Cause it was al - most love, it was al - most

M
on - ly the si - lence hits so hard. 'Cause it was al - most love, it was al - most

L
on - ly the si - lence hits so hard. 'Cause it was al - most love, it was al - most

P.S.A.
C G^m B^b D^m

22

H
- love It was al - most love, it was al - most love.

M
- love It was al - most love, it was al - most love.

L
- love It was al - most love, it was al - most love. When I

P.S.A.
C^{add2} B^b D^m C^{add2} *f*

E

25

H
mp that sound the walls came

M
mp that sound the walls came

L
heard that sound, when the walls came down I was thin - king a - bout you, a - bout

P.S.A.
D^m B^b F *mf*

F

G

37

H
al - most love, it was al - most _____ We bleed our - selves in vain, _____ how tra - gic is _____ this game,

M
al - most love, it was al - most _____ We bleed our - selves in vain, _____ how tra - gic is _____ this game,

L
al - most love, it was al - most _____

P.S.A.
mp *mf*

B \flat D m C add2 D m

40

H
_____ turn - a - round, I'm hol - ding on _____ to some - one but _____ the love _____ is gone. Ca - rry - ing _____ the load

M
_____ turn - a - round, I'm hol - ding on _____ to some - one but _____ the love _____ is gone. Ca - rry - ing _____ the load

L

P.S.A.
mf

B \flat C G m

43

H
_____ with wings that feel _____ like stone, _____ know - ing that _____ we near - ly fell _____ so _____ far now _____ it's hard

M
_____ with wings that feel _____ like stone, _____ know - ing that _____ we near - ly fell _____ so _____ far now _____ it's hard

L
Oo _____ Oo _____

P.S.A.
mf

D m B \flat C

55

H
grows old my breath runs

M
skin grows old, when my breath runs cold I'll be thin-king a - bout you, a bout

L
grows old my breath runs

P.S.A.
D^m B^b F

58

H
cold your ghost I see thin - - -

M
- you. When I run out of air to breathe it's your ghost I see I'll be thin-king a - bout

L
cold your ghost I see thin - - -

P.S.A.
C/e D^m B^b

61

H
king 'bout you. While I

M
- you, a - bout you While I

L
king 'bout you. While I reached out for your hand,

P.S.A.
F C/e B^b D^m

J

p *p* *mf* *mp*

Skin 9
Chorus-LIGHT Piano Solo Advanced

73

H
— you, a - bout you. When my skin grows old, when my

M
you, a - bout you. When my skin grows old, when my

L
— you, a - bout you. When my skin grows old, when my

P.S.A.
F C/e D^m

76

H
breath runs cold I'll be thin-king a - bout you, a - bout you. When I

M
breath runs cold I'll be thin-king a - bout you, a - bout you. When I

L
breath runs cold I'll be thin-king a - bout you, a - bout you. When I

P.S.A.
B^b F C/e

79

H
run out of air to breathe It's your ghost I see I'll be thin-king a - bout you, a - bout

M
run out of air to breathe it's your ghost I see I'll be thin-king a - bout you, a - bout

L
run out of air to breathe it's your ghost I see I'll be thin-king a - bout you, a - bout

P.S.A.
D^m B^b F



Chorus-LIGHT Piano Solo Intermediate

Skin

- Rag'n'Bone Man -

Words and Music by
Graham, Coffey, Scott, Needle, Brye
Arranged by Peter van Lonkhuijsen
Original Key

Soul/Blues ♩ = 86

A

B

High

Mid

Low

Piano Solo Intermediate

mf

When I heard that sound, when the

D^m B⁷/d F/c C D^m

H

M

L

P.S.I.

walls came down I was thin-king a - bout___ you, a - bout___ you. When my skin grows old, when my

B⁷/d F/c C D^m

© www.ChorusOnline.com / 0031 (0) 6 - 41 57 77 56

D

19

H
- ver the si - lence hits so hard. 'Cause it was al - most love, it was al - most

M
on - ly the si - lence hits so hard. 'Cause it was al - most love, it was al - most

L
on - ly the si - lence hits so hard. 'Cause it was al - most love, it was al - most

P.S.I.
C G^m B^b D^m

mp

22

H
- love It was al - most love, it was al - most love.

M
- love It was al - most love, it was al - most love.

L
- love It was al - most love, it was al - most love. When I

P.S.I.
C^{add2} B^b D^m C^{add2}

f

E

25

H
mp that sound the walls came

M
mp that sound the walls came

L
heard that sound, when the walls came down I was thin - king a - bout you, a - bout

P.S.I.
D^m B^b F

mf

F

G

37

H al - most love, it was al - most _____ We bleed our - selves in vain, _____ how tra - gic is _____ this game,

M al - most love, it was al - most _____ We bleed our - selves in vain, _____ how tra - gic is _____ this game,

L al - most love, it was al - most _____

P.S.I. *mp* *mf*

B \flat D m C add2 D m

40

H _____ turn a - round, I'm hol - ding on _____ to some - one but _____ the love _____ is gone. Ca - rry - ing _____ the load

M _____ turn a - round, I'm hol - ding on _____ to some - one but _____ the love _____ is gone. Ca - rry - ing _____ the load

L _____

P.S.I. B \flat C G m

43

H _____ with wings that feel like stone, _____ know - ing that _____ we near - ly fell _____ so _____ far now _____ it's hard

M _____ with wings that feel like stone, _____ know - ing that _____ we near - ly fell _____ so _____ far now _____ it's hard

L _____

P.S.I. Oo _____ Oo _____

D m B \flat C

55

H
grows old my breath runs

M
skin grows old, when my breath runs cold I'll be thin-king a - bout you, a bout

L
grows old my breath runs

P.S.I.
D^m B^b F

58

H
cold your ghost I see thin - - -

M
- you. When I run out of air to breathe it's your ghost I see I'll be thin-king a - bout

L
cold your ghost I see thin - - -

P.S.I.
C/e D^m B^b

61

H
king 'bout you. While I

M
- you, a - bout you While I

L
king 'bout you. While I reached out for your hand,

P.S.I.
F C/e B^b D^m

J

p

p

mf

mp

Skin 9
Chorus-LIGHT Piano Solo Intermediate

73

H
— you, a - bout you. When my skin grows old, when my

M
you, a - bout you. When my skin grows old, when my

L
— you, a - bout you. When my skin grows old, when my

P.S.I.
F C/e D^m

76

H
breath runs cold I'll be thin - king a - bout you, a - bout you. When I

M
breath runs cold I'll be thin - king a - bout you, a - bout you. When I

L
breath runs cold I'll be thin - king a - bout you, a - bout you. When I

P.S.I.
B^b F C/e

79

H
run out of air to breathe It's your ghost I see I'll be thin - king a - bout you, a - bout

M
run out of air to breathe it's your ghost I see I'll be thin - king a - bout you, a - bout

L
run out of air to breathe it's your ghost I see I'll be thin - king a - bout you, a - bout

P.S.I.
D^m B^b F



Chorus-LIGHT

Skin

- Rag'n'Bone Man -

Words and Music by
Graham, Coffer, Scott, Needle, Brye
Arranged by Peter van Lonkhuijsen
Original Key

Soul/Blues ♩ = 86

A

B

High

Mid

Low

mf

When I heard that sound, when the

6

H

M

L

walls came down I was thin-king a - bout ___ you, a - bout ___ you. When my

9

H

M

L

skin grows old, when my breath runs cold I'll be thin-king a - bout ___ you, a bout

D

20

H — 'Cause it was al - most love, it was al - most ____ love It was

M — 'Cause it was al - most love, it was al - most ____ love It was

L — 'Cause it was al - most love, it was al - most ____ love It was

E

23

H al - most love, it was al - most ____ love. *mp* that

M al - most love, it was al - most ____ love. *mp* that

L al - most love, it was al - most ____ love. *f* When I heard that sound, when the

26

H sound the walls came down

M sound the walls came down

L walls came down I was thin-king a - bout ____ you, a - bout ____ you. When my

29

H grows old my breath runs

M grows old my breath runs

L skin grows old, when my breath runs cold I'll be thin-king a - bout ____ you, a bout

41

H
- ding on__ to some - one but__ the love__ is gone. Ca - rry - ing__ the load

M
- ding on__ to some - one but__ the love__ is gone. Ca - rry - ing__ the load

L

43

H
_ with wings that feel__ like stone,_____ know - ing that__ we near -

M
_ with wings that feel__ like stone,_____ know - ing that__ we near -

L

Oo _____

45

H
- ly fell__ so__ far now__ it's hard__ to tell.

M
- ly fell__ so__ far now__ it's hard__ to tell.

L

Oo _____ Yeah we

H

47 *mp*

H
Oo _____ Oo _____

M *mp*

M
Oo _____ Oo _____

L

came so__ close, it was al - most__ love It was al - most love, it was al - most

J

61 *p*
 H king 'bout you. While I reached for your
 M — you, a-bout — you *p* While I reached for your
 L king 'bout you. *mf* While I reached out for your hand, —

65
 H hand walls in — o - - - ther
 M hand walls in — o - - - ther
 L when the walls were ca - ving in, — when I see you on — the o -

68
 H side we can try — all o - ver — a - gain.
 M side we can try — all o - ver — a - gain.
 L - ther side — We can try — all o - ver — a - gain.

K

70 *f*
 H — When I heard that sound, when the
 M — When I heard that sound, when the
 L — When I heard that sound, when the

Skin 9
Chorus-LIGHT

80

H
ghost I see I'll be thin - king a - bout you, a - bout

M
ghost I see I'll be thin - king a - bout you, a - bout

L
ghost I see I'll be thin - king a - bout you, a - bout

82

H
— you. *p* 'Cause it was al - most love, it was al - most

M
you. *p* 'Cause it was al - most love, it was al - most

L
you. *p* 'Cause it was al - most love, it was al - most

84

H
— love It was al - most love, it was al - most

M
— love It was al - most love, it was al - most

L
— love It was al - most love, it was al - most

86

H
— love.

M
— love.

L
— love

C Instrument

Skin

- Rag'n'Bone Man -

Words and Music by
Graham, Coffey, Scott, Needle, Brye
Arranged by Peter van Lonkhuijsen
Original Key



Soul/Blues ♩ = 86

A

B

C

D

C Instr.

Musical staff with measures 1-4. Measure 1 has a 4-measure rest. Measures 2-3 have 8-measure rests. Measure 4 has a 4-measure rest.

E

F

G

H

Musical staff with measures 5-8. Measure 5 has a 12-measure rest. Measure 6 has a 2-measure rest. Measure 7 has an 8-measure rest. Measure 8 has a 4-measure rest.

I

Musical staff with measures 9-12. Measure 9 has a whole rest. Measure 10 has a half note. Measure 11 has a quarter note. Measure 12 has a half note. Dynamics: *mf*

Musical staff with measures 13-16. Measure 13 has a quarter note. Measure 14 has a quarter note. Measure 15 has a quarter note. Measure 16 has a half note.

Musical staff with measures 17-20. Measure 17 has a whole rest. Measure 18 has a half note. Measure 19 has a quarter note. Measure 20 has a half note.

J

K

Musical staff with measures 21-24. Measure 21 has an 8-measure rest. Measure 22 has a whole rest. Measure 23 has a half note. Measure 24 has a half note.

Musical staff with measures 25-28. Measure 25 has a quarter note. Measure 26 has a quarter note. Measure 27 has a quarter note. Measure 28 has a half note.

Musical staff with measures 29-32. Measure 29 has a quarter note. Measure 30 has a quarter note. Measure 31 has a quarter note. Measure 32 has a half note.

Musical staff with measures 33-36. Measure 33 has a quarter note. Measure 34 has a quarter note. Measure 35 has a quarter note. Measure 36 has a 5-measure rest.

© www.ChorusOnline.com / 0031 (0) 6 - 41 57 77 56

Bb Instrument

Skin

- Rag'n'Bone Man -

Words and Music by
Graham, Coffey, Scott, Needle, Brye
Arranged by Peter van Lonkhuijsen
Original Key



Soul/Blues ♩ = 86

A **B** **C** **D**

4 8 8 4

Bb Instr.

E **F** **G** **H**

25 12 2 8 4

I

51 *mf*

55

59

J **K**

63 8

73

77

81 5

E♭ Instrument

Skin

- Rag'n'Bone Man -

Words and Music by
Graham, Coffey, Scott, Needle, Brye
Arranged by Peter van Lonkhuijsen
Original Key



Soul/Blues ♩ = 86

A **B** **C** **D**

4 8 8 4

E♭ Instr.

E **F** **G** **H**

25 12 2 8 4

I

51 *mf*

55

59

J **K**

63 8

73

77

81 5

Piano Combo

Skin

- Rag'n'Bone Man -

Words and Music by
Graham, Coffey, Scott, Needle, Brye
Arranged by Peter van Lonkhuijsen
Original Key



Soul/Blues ♩ = 86

A

D^m

B^b/d

F/c

C

B

D^m

B^b/d

7

F/c

C

D^m

B^b/d

F/c

C

C

13

D^m

B^b

C

G^m

D^m

B^b

no synth: play small notes

mf

D

19

C

G^m

B^b

D^m

C^{add2}

B^b

D^m

C^{add2}

mp

E

25

D^m

B^b

F

C/e

mf

57 F C/e D^m B^b

61 F C/e B^b D^m C B^b D^m A^{sus4} A

J

mp

67 B^b D^m C G^m D^m A^{sus4} A D^m

K

mf

72 B^b F C/e D^m B^b

77 F C/e D^m B^b F

82 C/e B^b D^m C/e B^b D^m C/e

p



Skin

- Rag'n'Bone Man -

Words and Music by
Graham, Coffey, Scott, Needle, Brye
Arranged by Peter van Lonkhuijsen
Original Key

Soul/Blues ♩ = 86

A

D^m

B^b/d

F/c

C

B

D^m

B^b/d

F/c

C

D^m

B^b/d

F/c

C

C

D^m

B^b

C

G^m

D^m

B^b

C

G^m

D

B^b

D^m

C^{add2}

B^b

D^m

C^{add2}

H

47 B^b D^m C B^b D^m C

mp

I

51 D^m B^b F

54 C/e D^m B^b

57 F C/e D^m

60 B^b F C/e

J

63 B^b D^m C B^b D^m A^{sus4} A

Piano Solo Intermediate



Skin

- Rag'n'Bone Man -

Words and Music by
Graham, Coffey, Scott, Needle, Brye
Arranged by Peter van Lonkhuijsen
Original Key

Soul/Blues ♩ = 86

A

D^m

B^b/d

F/c

C

B

D^m

B^b/d

7

F/c

C

D^m

B^b/d

F/c

C

C

13

D^m

B^b

C

G^m

D^m

B^b

D

19

C

G^m

B^b

D^m

C^{add2}

B^b

D^m

C^{add2}

E

25

D^m

B^b

F

H

47 B^b D^m C B^b D^m C

mp

I

51 D^m B^b F

mf

54 C/e D^m B^b

mf

57 F C/e D^m

mf

60 B^b F C/e

mf

J

63 B^b D^m C B^b D^m A^{sus4} A

mp

Synthesizer

Skin

- Rag'n'Bone Man -

Words and Music by
Graham, Coffey, Scott, Needle, Brye
Arranged by Peter van Lonkhuijsen
Original Key



Soul/Blues ♩ = 86

A

B

Hammond Organ

p

Strings

7

C

13

D

19

E

25

mp

© www.ChorusOnline.com / 0031 (0) 6 - 41 57 77 56

J

Musical notation for section J, measures 63-66. The piece is in 4/4 time with a key signature of one flat (B-flat). The right hand plays a melody of quarter notes, and the left hand plays a bass line of quarter notes. Dynamics include piano (p) and mezzo-forte (mf). A large watermark 'ORIGINAL DO NOT COPY' is visible across the page.

Musical notation for section J, measures 67-70. The piece is in 4/4 time with a key signature of one flat (B-flat). The right hand plays a melody of quarter notes, and the left hand plays a bass line of quarter notes. Dynamics include piano (p) and mezzo-forte (mf). A large watermark 'ORIGINAL DO NOT COPY' is visible across the page.

K

Musical notation for section K, measures 71-74. The piece is in 4/4 time with a key signature of one flat (B-flat). The right hand plays a melody of quarter notes, and the left hand plays a bass line of quarter notes. Dynamics include mezzo-forte (mf). A large watermark 'ORIGINAL DO NOT COPY' is visible across the page.

Musical notation for section K, measures 75-78. The piece is in 4/4 time with a key signature of one flat (B-flat). The right hand plays a melody of quarter notes, and the left hand plays a bass line of quarter notes. Dynamics include mezzo-forte (mf). A large watermark 'ORIGINAL DO NOT COPY' is visible across the page.

Musical notation for section K, measures 79-82. The piece is in 4/4 time with a key signature of one flat (B-flat). The right hand plays a melody of quarter notes, and the left hand plays a bass line of quarter notes. Dynamics include mezzo-forte (mf). A large watermark 'ORIGINAL DO NOT COPY' is visible across the page.

Musical notation for section K, measures 83-86. The piece is in 4/4 time with a key signature of one flat (B-flat). The right hand plays a melody of quarter notes, and the left hand plays a bass line of quarter notes. Dynamics include piano (p) and piano-pianissimo (pp). A large watermark 'ORIGINAL DO NOT COPY' is visible across the page.



Guitar

Skin

- Rag'n'Bone Man -

Words and Music by
Graham, Coffey, Scott, Needle, Brye
Arranged by Peter van Lonkhuijsen
Original Key

Soul/Blues ♩ = 86

A

B

Guitar

El. Guitar (clean)

C

D

E

© www.ChorusOnline.com / 0031 (0) 6 - 41 57 77 56



Bass Guitar

Skin

- Rag'n'Bone Man -

Words and Music by
Graham, Coffey, Scott, Needle, Brye
Arranged by Peter van Lonkhuijsen
Original Key

Soul/Blues ♩ = 86

A **B** **C** **D**

4 8 8 4

Bass Guitar

E
25

f D^m B^b F C/e

29 D^m B^b F C/e

33 D^m B^b F C/e

F **G** **H**

37 2 8 4

I
51

f D^m B^b F C/e

55 D^m B^b F C/e

Drumkit/Percussion

High Tom
Hi-Hat closed
Hi-Hat open
Mid Tom
Low Tom
Ride Cymbal
Crash Cymbal
Triangle mute
Shareclick
Floor Tom
Ride Bell/Cup
Splash Cymbal
Triangle open
Bassdrum (Kick)
Hi-Hat Foot
Tambourine Beating
Snaredrum

- Shaker (eggs)
- Claves
- High Timbale
- Sleigh Bells
- Bell Tree
- Maracas
- Wind Chimes

Handclap
Güiro
Woodblock High
Timbale Low
Agogo High
Cowbell
Conga
Cabasa
Woodblock Low
Agogo Low

Skin

- Rag'n'Bone Man -

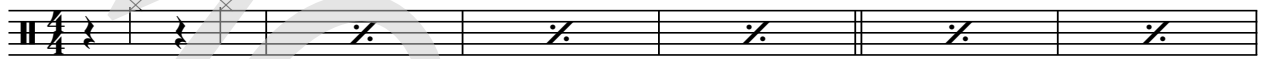
Words and Music by
Graham, Coffey, Scott, Needle, Brye
Arranged by Peter van Lonkhuijsen
Original Key

Soul/Blues ♩ = 86

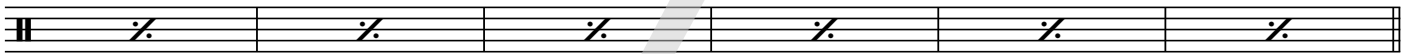
A

B

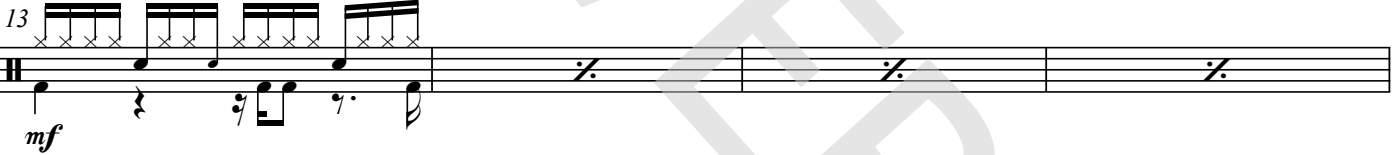
Drums



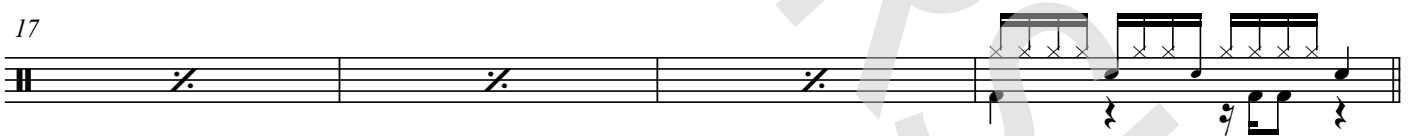
7



C

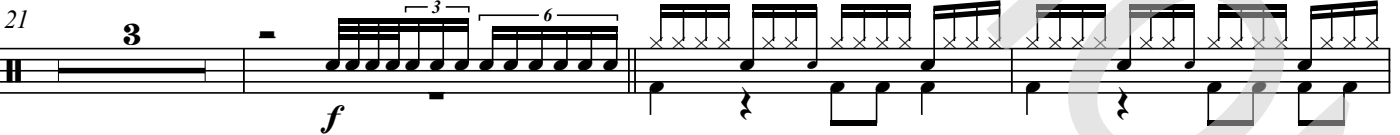


17

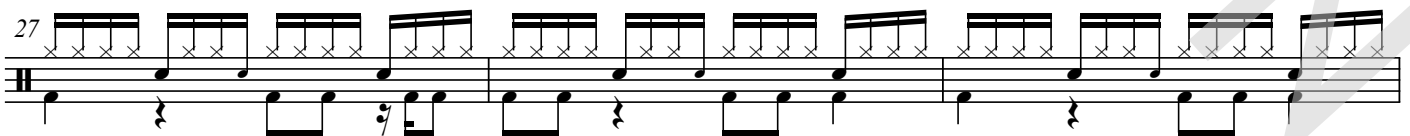


D

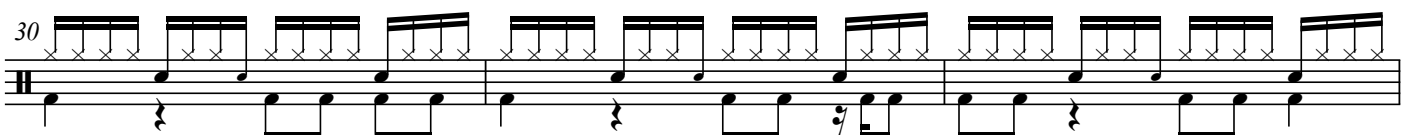
E



27



30



4 Skin
Drums

J

63

p

67

K

71

f

74

77

80

83

5

Drumkit/Percussion

High Tom
Hi-Hat closed
Hi-Hat open
Mid Tom
Low Tom
Ride Cymbal
Crash Cymbal
Triangle mute
Shareclick
Floor Tom
Ride Bell/Cup
Splash Cymbal
Triangle open
Bassdrum (Kick)
Hi-Hat Foot
Tambourine Beating
Snaredrum

- Shaker (eggs)
- Claves
- High Timbale
- Sleigh Bells
- Bell Tree
- Maracas
- Wind Chimes

Handclap
Güiro
Woodblock High
Timbale Low
Agogo High
Cowbell
Conga
Cabasa
Woodblock Low
Agogo Low



Percussion

Skin

- Rag'n'Bone Man -

Words and Music by
Graham, Coffey, Scott, Needle, Brye
Arranged by Peter van Lonkhuijsen
Original Key

Soul/Blues ♩ = 86

A **B**

Percussion *Susp. cymbal*

4 6

pp *mf*

C **D**

13 7

pp *mf*

E

22 2 *Handclap*

pp

27

31

F

35

pp *mf*

G **H**

39 7

pp *mf*

© www.ChorusOnline.com / 0031 (0) 6 - 41 57 77 56

Skin

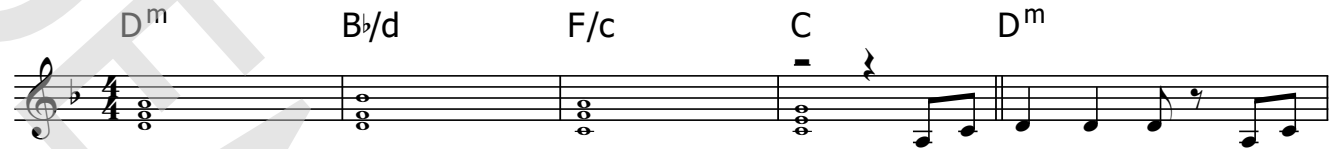
- Rag'n'Bone Man -

Words and Music by
Graham, Coffey, Scott, Needle, Brye
Arranged by Peter van Lonkhuijsen
Original Key

Soul/Blues ♩ = 86

A

D^m B^b/d F/c C D^m



When I heard that sound, when the

6 B^b/d F/c C D^m



walls came down I was thin-king a - bout ___ you, a - bout ___ you. When my skin grows old, when my

10 B^b/d F/c C



breath runs cold I'll be thin-king a - bout ___ you, a bout ___ you. Se - conds from my heart,

C 13 D^m B^b C



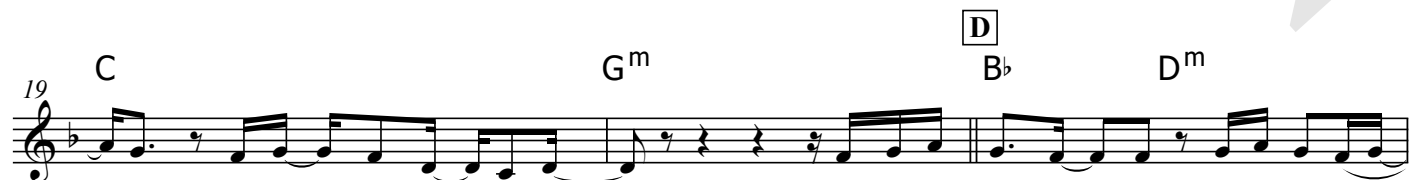
___ a bu - llet from the dark. ___ Help - less I ___ su - rren - der, sha - ckled by ___ your love

16 G^m D^m B^b



___ Hol - ding me ___ like this, ___ poi - son on ___ you lips, ___ on - ly when it's o -

19 C G^m **D** B^b D^m



- ver the si - lence hits so hard. ___ 'Cause it was al - most love, it was al - most

43 Dm B \flat C

— with wings that feel like stone, know - ing that we near - ly fell so far now it's hard

46 G m B \flat D m C

— to tell. Yeah we came so close, it was al - most love It was

49 B \flat D m C I D m

al - most love, it was al - most love. When I heard that sound, when the

52 B \flat F C/e

walls came down I was thin-king a - bout you, a - bout you. When my

55 D m B \flat F

skin grows old, when my breath runs cold I'll be thin-king a - bout you, a bout

58 C/e D m B \flat

— you. When I run out of air to breathe it's your ghost I see I'll be thin-king a - bout

61 F C/e J B \flat D m C

— you a - bout you. While I reached out for your hand,



Lyrics

Skin

- Rag'n'Bone Man -

*Words and Music by
Graham, Coffey, Scott, Needle, Brye
Arranged by Peter van Lonkhuijsen
Original Key*

A:
Intro

B:
When I heard that sound, when the walls came down I was thinking about you, about you.
When my skin grows old, when my breath runs cold I'll be thinking about you, about you.

C:
Seconds from my heart, a bullet in the dark, helpless I surrender, shackled by your love.
Holding me like this, poison on your lips, only when it's over, the silence hits so hard.

D:
'Cause it was almost love, it was almost love. It was almost love, it was almost love.

E:
When I heard that sound, when the walls came down I was thinking about you, about you.
When my skin grows old, when my breath runs cold I'll be thinking about you, about you.
When I run out of air to breathe it's your ghost I see, I'll be thinking about you, about you.

F:
It was almost love, it was almost

G:
We bleed ourselves in vain, how tragic is this game,
turn around, I'm holding on to someone but the love is gone.
Carrying the load with wings that feel like stone,
knowing that we nearly fell so far now it's hard to tell.

H:
Yeah we came so close, it was almost love. It was almost love, it was almost love.

I:
When I heard that sound, when the walls came down I was thinking about you, about you.
When my skin grows old, when my breath runs cold I'll be thinking about you, about you.
When I run out of air to breathe it's your ghost I see, I'll be thinking about you, about you.

J:
While I reached out for your hand, when the walls were caving in,
When I see you on the other side, we can try all over again.

K:
When I heard that sound, when the walls came down I was thinking about you, about you.
When my skin grows old, when my breath runs cold I'll be thinking about you, about you.
When I run out of air to breathe it's your ghost I see, I'll be thinking about you, about you.
'Cause it was almost love, it was almost love. It was almost love, it was almost love.