



Elton John MEDLEY - SSAATBB

Pag.

02	Full score combo C instrument
18	Full score combo Bb instrument
34	Full score combo Eb instrument
50	Full score combo 4 extra staves
72	Full score small combo
93	Full score small combo 2 extra staves
124	Full score vocals (SSAATBB) Piano Solo Advanced
148	Full score vocals (SSAATBB) Piano Solo Moderated
172	Vocals (SSAATBB)
197	C instrument
199	Bb instrument
201	Eb instrument
203	Piano Combo Advanced
212	Piano Solo Advanced
221	Piano Solo Moderated
230	Piano Combo Moderated
239	Synthesizer
243	Guitar
247	Bassguitar
252	Drumkit
257	Percussion
260	Leadsheet (melody, lyrics, chords)
268	Empty paper
272	Lyrics

**The index numbers above are based on the original (complete) PDF-file.
In this smaller DEMO-version, the numbers above do NOT match this file !**



01 SSAATBB Combo C

Elton John - Medley

(Can You Feel The Love Tonight - Your Song - Daniel - Candle In The Wind - Crocodile Rock - Don't Let The Sun Go Down On Me)

Your Song Words & Music by Elton John & Bernie Taupin

© Copyright 1969 Dick James Music Limited. Universal/Dick James Music Limited. This arrangement © Copyright 2017 Dick James Music Limited. All Rights Reserved. International Copyright Secured. Used by permission of Music Sales Limited.

Daniel Words & Music by Elton John & Bernie Taupin

© Copyright 1972 Dick James Music Limited

Universal/Dick James Music Limited This arrangement © Copyright 2017 Dick James Music Limited All Rights Reserved. International Copyright Secured. Used by permission of Music Sales Limited.

I Guess That's Why They Call It The Blues Words & Music by Elton John, Bernie Taupin & Davey Johnstone © Copyright

1983 Big Pig Music Limited/Rouge Booze Incorporated/HST Publishing Limited.

Universal Music Publishing Limited. This arrangement © Copyright 2017 Big Pig Music Limited/Rouge Booze

Incorporated/HST Publishing Limited. All Rights Reserved. International Copyright Secured.

Used by permission of Music Sales Limited.

Candle In The Wind Words & Music by Elton John & Bernie Taupin

Copyright © 1973 UNIVERSAL/DICK JAMES MUSIC LTD. Copyright Renewed All Rights in the United States and Canada Controlled and Administered by UNIVERSAL - SONGS OF POLYGRAM INTERNATIONAL, INC. All Rights Reserved Used by Permission

Crocodile Rock Words & Music by Elton John & Bernie Taupin

© Copyright 1972 Dick James Music Limited. Universal/Dick James Music Limited. This arrangement © Copyright 2017 Dick James Music Limited. All Rights Reserved. International Copyright Secured. Used by permission of Music Sales Limited.

Don't Let The Sun Go Down On Me Words & Music by Elton John & Bernie Taupin

© Copyright 1974 HST Management Limited/Rouge Booze Incorporated. Universal Music Publishing Limited. This arrangement © Copyright 2017 HST Management Limited/Rouge Booze Incorporated. All Rights Reserved. International Copyright Secured. Used by permission of Music Sales Limited.

Can You Feel The Love Tonight Words & Music By Elton John & Tim Rice

© 1994 Wonderland Music Company Inc, USA This arrangement © 2014 Wonderland Music Company Inc, USA Warner/Chappell Music Ltd, London W6 8BS Reproduced by permission of Faber Music Ltd. All Rights Reserved

Arranged by Dirk Kokx

Ballad (♩ = 66)
Can You Feel The Love Tonight

Your Song
mf

Soprano
mf It's a lit - tle bit fun - ny _____

Alto
mf It's a lit - tle bit fun - ny _____

Tenor
mf It's a lit - tle bit fun - ny _____

Bass
mf It's a lit - tle bit fun - ny _____

C Instr.
mf B F#/a# E/g# B E B/d# F#/a# B C#m B/d# E A Maj7

Piano Combo
Advanced
mf

Synthesizer
p
Sstrings (programmed octaves)
mf

Guitar
Ac. Guitar (nylon)
fingerpicking
mf

Bass Guitar
mf

Drum Set
p

Percussion

Elton John - Medley 3

01 SSAATBB Combo C

16

S
of the ver-ses — well they've got — me quite cross — But the sun's been quite kind — when I wrote this song — It's for peo-ple like you that —

A
oo — But the sun's been quite kind — when I wrote this song — It's for peo-ple like you that

T
But the sun's been quite kind — when I wrote this song — It's for peo-ple like you that

B
But the sun's been quite kind — when I wrote this song — It's for peo-ple like you that

C

P.C.A.
C#m /b /a# A E/b B G#/b# C#m B/d# E F#m7

Synth

Gtr.

Bass

D. S.

Perc.

21

S
keep it turned on. — And you can tell ev' - ry-bo - dy this — is your song — it may be quite — sim - ple but

A
keep it turned on. — ah... —

T
keep it turned on. — ah... —

B
keep it turned on. — And you can tell ev' - ry-bo - dy this — is your song — it may be quite — sim - ple but

C

P.C.A.
A E E sus4 E B/d# C#m F#m7 A B/d# C#m

Synth

Gtr.

Bass

D. S.
continue same style

Perc.

Elton John - Medley 5
01 SSAATBB Combo C

36

S

A *mf*
Da-niel is tra - v'ling to - night on a plane,

T

B

C

P.C.A.
B7/a A E/b B E A/b E

Synth

Gr.

Bass

D. S.

Perc.

continue same style

45

S

A
I can see the red tail - lights head - ing for Spain. Oh and I can see Da - niel wa - ving good - bye.

T

B

C

P.C.A.
F#m E/f# F#m B G# C#m B A B C#m

Synth

Gr.

Bass

D. S.

Perc.

Elton John - Medley 7

01 SSAATBB Combo C

67

S
Time on my hands

A
Time on my hands

T
blues Time on my hands could be time spend with you Laugh-ing like chil-dren, li-ving like lo-vers Rol-ling like

B
blues Time on my hands could be time spend with you Laugh-ing like chil-dren, li-ving like lo-vers Rol-ling like

C

P.C.A.
D D A/C# Bm7 A E D A E F#m A/C#

Synth

Gr. *El. Guitar (Overdrive)*
f

Bass

D.S.

Perc.

72

S
ah Laugh-ing like chil-dren li-ving like lo-vers

A
ah Laugh-ing like chil-dren li-ving like lo-vers

T
thun-der un-der the co-vers and I guess that's why they call it the blues and I

B
thun-der un-der the co-vers and I guess that's why they call it the blues and I

C

P.C.A.
D B7/d# D D/e E A E F#m C#m

Synth

Gr. *rock guitar style*

Bass

D.S.
fill

Perc.

Elton John - Medley 9

01 SSAATBB Combo C

90

S
They crawled out of the wood-work and they whis-pered in - to ___ your brain They set you ___ on the tread - mill and made you change your name

A

T

B
mf
They crawled out of the wood-work and they whis-pered in - to ___ your brain They set you ___ on the tread - mill and made you change your name

C

P.C.A.
A^{sus4} A E E^{add2} E A E/g# E^{sus4}

Synth

Gr.

Bass

D. S.

Perc.

97

S
and it seems to me ___ you lived your life ___ like a can - dle in ___ the wind ___ Ne-ver know-ing who ___ to cling

A
mf
can - dle in ___ the wind ___ ah

T
mf
can - dle in ___ the wind ___ ah

B
and it seems to me ___ you lived your life ___ like a can - dle in ___ the wind ___ Ne-ver know-ing who ___ to cling

C

P.C.A.
A A^{add2} A B B⁷ E A E

Synth
Warm Pad

Gr.
Distortion (bend)

Bass

D. S.

Perc.
Tambourine

Elton John - Medley 11
01 SSAATBB Combo C

118

S
A
T
B

oo — yeah! —
oo — yeah! —

I re - mem - ber when rock was young — me and Su -
I re - mem - ber when rock was young — me and Su -

C

E^{major}2 E^{minor} C D⁷/c C D G/d D G C/g

P.C.A.
Synth
Gtr. (Delay - a little overdrive) mf
Bass
D. S. f
Perc. Tambourine f

125

S
A
T
B

But the big - gest kick I e - ver got
But the big - gest kick I e - ver got

zie had so much fun — Hol - ding hands — and skim - ming stones — Had an old — gold che - vy and a place of my own — But the big - gest kick I e - ver got
zie had so much fun — Hol - ding hands — and skim - ming stones — Had an old — gold che - vy and a place of my own — But the big - gest kick I e - ver got

C

B^{minor} C/b B^{minor} C F/c C F/c C D G/d D G

P.C.A.
Synth
Gtr.
Bass
D. S. fill ----- 7
Perc.

Elton John - Medley 15
01 SSAATBB Combo C

174

S
sun go - ing down on me Ah! Lo - sing ev' - ry - thing is like the sun go - ing down

A
sun go - ing down on me Ah! Lo - sing ev' - ry - thing is like the sun go - ing down on

T
sun go - ing down on me Ah! is like the sun go - ing down on

B
sun go - ing down on me Ah! is like the sun go - ing down on

C
F#m E/g# F#m/a A/b E E/d A/C# F#m E/g# F#m/a A/b B#7

P.C.A.
Synth
Gtr.
Bass
D. S.
Perc.

A Bit Slower
Your Song

170

S
I hope you don't mind I hope you don't mind that I put down in words how won - der - full life is while you're in the world

A
me how won - der - full life is while you're in the world

T
me how won - der - full life is while you're in the world

B
me how won - der - full life is while you're in the world

C
C#m C#m/b /a# Amaj7(6) E/g# A A

P.C.A.
Synth
Gtr.
Bass
D. S.
Perc.
Cymbal (timp sticks) p lv.
Barchimes p



02 SSAATBB Combo Bb

Elton John - Medley

(Can You Feel The Love Tonight - Your Song - Daniel - Candle In The Wind - Crocodile Rock - Don't Let The Sun Go Down On Me)

Your Song Words & Music by Elton John & Bernie Taupin
© Copyright 1969 Dick James Music Limited. Universal/Dick James Music Limited. This arrangement © Copyright 2017 Dick James Music Limited. All Rights Reserved. International Copyright Secured. Used by permission of Music Sales Limited.

Daniel Words & Music by Elton John & Bernie Taupin
© Copyright 1972 Dick James Music Limited
Universal/Dick James Music Limited This arrangement © Copyright 2017 Dick James Music Limited All Rights Reserved. International Copyright Secured. Used by permission of Music Sales Limited.

I Guess That's Why They Call It The Blues Words & Music by Elton John, Bernie Taupin & Davey Johnstone © Copyright 1983 Big Pig Music Limited/Rouge Booze Incorporated/HST Publishing Limited.
Universal Music Publishing Limited. This arrangement © Copyright 2017 Big Pig Music Limited/Rouge Booze Incorporated/HST Publishing Limited. All Rights Reserved. International Copyright Secured.
Used by permission of Music Sales Limited.

Candle In The Wind Words & Music by Elton John & Bernie Taupin
Copyright © 1973 UNIVERSAL/DICK JAMES MUSIC LTD. Copyright Renewed All Rights in the United States and Canada Controlled and Administered by UNIVERSAL - SONGS OF POLYGRAM INTERNATIONAL, INC. All Rights Reserved Used by Permission

Crocodile Rock Words & Music by Elton John & Bernie Taupin
© Copyright 1972 Dick James Music Limited. Universal/Dick James Music Limited. This arrangement © Copyright 2017 Dick James Music Limited. All Rights Reserved. International Copyright Secured. Used by permission of Music Sales Limited.

Don't Let The Sun Go Down On Me Words & Music by Elton John & Bernie Taupin
© Copyright 1974 HST Management Limited/Rouge Booze Incorporated. Universal Music Publishing Limited. This arrangement © Copyright 2017 HST Management Limited/Rouge Booze Incorporated. All Rights Reserved. International Copyright Secured. Used by permission of Music Sales Limited.

Can You Feel The Love Tonight Words & Music By Elton John & Tim Rice
© 1994 Wonderland Music Company Inc, USA This arrangement © 2014 Wonderland Music Company Inc, USA Warner/Chappell Music Ltd, London W6 8BS Reproduced by permission of Faber Music Ltd. All Rights Reserved

Arranged by Dirk Kokx

Ballad (♩ = 66)
Can You Feel The Love Tonight

Your Song

Soprano
Alto
Tenor
Bass

It's a lit - tle bit fun - ny _____

mf

Bb Instr.
mf
B F#/a# E/g# B E B/d# F#/a# B C#m B/d# E A Maj7

Piano Combo Advanced
mf

Synthesizer
p
Strings (programmed octaves)
mf

Guitar
mf
Ac. Guitar (nylon) fingerpicking

Bass Guitar
mf p

Drum Set
p

Percussion

Elton John - Medley 3

02 SSAATBB Combo Bb

16

S
of the ver-ses — well they've got — me quite cross — But the sun's been quite kind — when I wrote this song — It's for peo-ple like you that —

A
oo — But the sun's been quite kind — when I wrote this song — It's for peo-ple like you that

T
But the sun's been quite kind — when I wrote this song — It's for peo-ple like you that

B
But the sun's been quite kind — when I wrote this song — It's for peo-ple like you that

Bb

P.C.A.
C#m /b /a# A E/b B G#b# C#m B/d# E F#m7

Synth

Gr.

Bass

D. S.

Perc.

21

S
keep it turned on. — And you can tell ev - ry-bo - dy this — is your song — it may be quite — sim - ple but

A
keep it turned on. — ah... —

T
keep it turned on. — ah... —

B
keep it turned on. — And you can tell ev - ry-bo - dy this — is your song — it may be quite — sim - ple but

Bb

P.C.A.
A E E sus4 E B/mf/d# C#m F#m7 A B/d# C#m

Synth

Gr.

Bass

D. S.
continue same style

Perc.

Elton John - Medley 5
02 SSAATBB Combo Bb

36

S

A

T

B

Bb

P.C.A.

Synth

Gr.

Bass

D. S.

Perc.

mf

Da-niel is tra - vling to - night on a plane,

B⁷/a A E/b B E A/b E

continue same style

45

S

A

T

B

Bb

P.C.A.

Synth

Gr.

Bass

D. S.

Perc.

I can see the red tail - lights head - ing for Spain. Oh and I can see Da - niel wa - ving good - bye.

F#m E/f# F#m B G# C#m B A B C#m

Elton John - Medley 7
02 SSAATBB Combo Bb

67

S
Time on my hands

A
Time on my hands

T
blues Time on my hands could be time spend with you Laugh - ing like chil - dren, li - ving like lo - vers Rol - ling like

B
blues Time on my hands could be time spend with you Laugh - ing like chil - dren, li - ving like lo - vers Rol - ling like

Bb

P.C.A.
D D A/C# Bm7 A E D A A E F#m A/C#

Synth

Gr. *El. Guitar (Overdrive)*
f

Bass

D. S.

Perc.

72

S
ah Laugh - ing like chil - dren li - ving like lo - vers

A
ah Laugh - ing like chil - dren li - ving like lo - vers

T
thun - der un - der the co - vers and I guess that's why they call it the blues and I

B
thun - der un - der the co - vers and I guess that's why they call it the blues and I

Bb

P.C.A.
D B7/c# D D/e E A E F#m C#m

Synth

Gr. *rock guitar style*

Bass
fill - - - - - fill - - - - -

D. S.

Perc.

Elton John - Medley 9
02 SSAATBB Combo Bb

90

S
They crawled out of the wood-work and they whis-pered in-to__ your brain They set you__ on the tread - mill and made you change your name

A

T

B
mf
They crawled out of the wood-work and they whis-pered in-to__ your brain They set you__ on the tread - mill and made you change your name

Bb

P.C.A.
A^{sus4} A E E^{add2} E A E/g# E^{sus4}

Synth

Gr.

Bass

D. S.

Perc.

97

S
and it seems to me__ you lived your life__ like a can - dle in__ the wind__ Ne-ver know-ing who__ to cling

A
mf
can - dle in__ the wind__ ah

T
mf
can - dle in__ the wind__ ah

B
and it seems to me__ you lived your life__ like a can - dle in__ the wind__ Ne-ver know-ing who__ to cling

Bb

P.C.A.
A A^{add2} A B B⁷ E A E

Synth
Warm Pad

Gr.
Distortion (bend)

Bass

D. S.

Perc.
Tambourine

Elton John - Medley 11
02 SSAATBB Combo Bb

118

S: oo — yeah! —

A: oo — yeah! —

T: I re-mem - ber when rock was young — me and Su -

B: I re-mem - ber when rock was young — me and Su -

P.C.A.: E^{mad}d2 E^m C D⁷/c C D G/d D G C/g

Synth: mf

Gtr.: (Delay - a little overdrive)

Bass: mf

D.S.: f

Perc.: Tambourine

f

125

S: But the big - gest kick I e - ver got

A: But the big - gest kick I e - ver got

T: zie had so much fun — Hol - ding hands — and skim - ming stones — Had an old — gold che - vy and a place of my own — But the big - gest kick I e - ver got

B: zie had so much fun — Hol - ding hands — and skim - ming stones — Had an old — gold che - vy and a place of my own — But the big - gest kick I e - ver got

Bb:

P.C.A.: B^m C/b B^m C F/c C F/c C D G/d D G

Synth:

Gtr.:

Bass:

D.S.: fill-----7

Perc.:

Elton John - Medley 13
02 SSAATBB Combo Bb

146

S Oh Law-dy Ma-ma those Fri-day nights Cro-co-dile Rock-ing was out of

A Oh Law-dy Ma-ma those Fri-day nights when Su-zie wore her dres-ses tight Cro-co-dile Rock-ing was out of

T Oh Law-dy Ma-ma those Fri-day nights when Su-zie wore her dres-ses tight Cro-co-dile Rock-ing was out of

B Oh Law-dy Ma-ma those Fri-day nights when Su-zie wore her dres-ses tight of

Bb

P.C.A. Em A D G/d C/dG/d D

Synth

Gr. fill -----

Bass

D.S.

Perc.

153

S sight La la la la la la la la la la la la la la

A sight La la la la la la la la la la la la la la

T sight (falses) La la la la la la la la la la la la la la

B sight (falses) La la la la la la la la la la la la la la

Bb 2nd time only

P.C.A. F/C C F/C C F/C C mf G /f# Em /d C /C# D C/d D

Synth Strings f

Gr.

Bass

D.S. Handclap

Perc.

Elton John - Medley 15
02 SSAATBB Combo Bb

174

S
sun go - ing down on me Ah! Lo - sing ev' - ry - thing is like the sun go - ing down

A
sun go - ing down on me Ah! Lo - sing ev' - ry - thing is like the sun go - ing down on

T
sun go - ing down on me Ah! is like the sun go - ing down on

B
sun go - ing down on me Ah! is like the sun go - ing down on

Bb

P.C.A.
F#m E/g# F#m/a A/b E E/d A/C# F#m E/g# F#m/a A/b B#7

Synth

Gr.

Bass

D.S.

Perc.

A Bit Slower
Your Song

170

S
I hope you don't mind I hope you don't mind that I put down in words how won - der - full life is while you're in the world

A
me how won - der - full life is while you're in the world

T
me how won - der - full life is while you're in the world

B
me how won - der - full life is while you're in the world

Bb

P.C.A.
C#m C#m/b /a# Amaj7(6) E/g# A A

Synth

Gr.

Bass

D.S.
Cymbal (timp sticks) Lv.

Perc.
Barchines

mp *p* *mf* *p* *mp*



03 SSAATBB Combo Eb

Elton John - Medley

(Can You Feel The Love Tonight - Your Song - Daniel - Candle In The Wind - Crocodile Rock - Don't Let The Sun Go Down On Me)

Your Song Words & Music by Elton John & Bernie Taupin
© Copyright 1969 Dick James Music Limited. Universal/Dick James Music Limited. This arrangement © Copyright 2017 Dick James Music Limited. All Rights Reserved. International Copyright Secured. Used by permission of Music Sales Limited.

Daniel Words & Music by Elton John & Bernie Taupin
© Copyright 1972 Dick James Music Limited
Universal/Dick James Music Limited This arrangement © Copyright 2017 Dick James Music Limited All Rights Reserved. International Copyright Secured. Used by permission of Music Sales Limited.

I Guess That's Why They Call It The Blues Words & Music by Elton John, Bernie Taupin & Davey Johnstone © Copyright 1983 Big Pig Music Limited/Rouge Booze Incorporated/HST Publishing Limited.
Universal Music Publishing Limited. This arrangement © Copyright 2017 Big Pig Music Limited/Rouge Booze Incorporated/HST Publishing Limited. All Rights Reserved. International Copyright Secured. Used by permission of Music Sales Limited.

Candle In The Wind Words & Music by Elton John & Bernie Taupin
Copyright © 1973 UNIVERSAL/DICK JAMES MUSIC LTD. Copyright Renewed All Rights in the United States and Canada Controlled and Administered by UNIVERSAL - SONGS OF POLYGRAM INTERNATIONAL, INC. All Rights Reserved Used by Permission

Crocodile Rock Words & Music by Elton John & Bernie Taupin
© Copyright 1972 Dick James Music Limited. Universal/Dick James Music Limited. This arrangement © Copyright 2017 Dick James Music Limited. All Rights Reserved. International Copyright Secured. Used by permission of Music Sales Limited.

Don't Let The Sun Go Down On Me Words & Music by Elton John & Bernie Taupin
© Copyright 1974 HST Management Limited/Rouge Booze Incorporated. Universal Music Publishing Limited. This arrangement © Copyright 2017 HST Management Limited/Rouge Booze Incorporated. All Rights Reserved. International Copyright Secured. Used by permission of Music Sales Limited.

Can You Feel The Love Tonight Words & Music By Elton John & Tim Rice
© 1994 Wonderland Music Company Inc, USA This arrangement © 2014 Wonderland Music Company Inc, USA Warner/Chappell Music Ltd, London W6 8BS Reproduced by permission of Faber Music Ltd. All Rights Reserved

Arranged by Dirk Kokcx

Ballad (♩ = 66)
Can You Feel The Love Tonight

Your Song
mf

Soprano
It's a lit - tle bit fun - ny _____

Alto
It's a lit - tle bit fun - ny _____

Tenor
It's a lit - tle bit fun - ny _____

Bass
It's a lit - tle bit fun - ny _____

Eb Instr.
mf
B F# / a# E / g# B E B / d# F# / a# B C#m B / d# E A Maj7

Piano Combo
Advanced
mf

Synthesizer
p
Strings (programmed octaves)
mf

Guitar
Ac. Guitar (nylon)
fingerpicking
mf

Bass Guitar
mf

Drum Set
p

Percussion

Elton John - Medley 3
03 SSAATBB Combo Eb

16

S of the ver-ses well they've got me quite cross But the sun's been quite kind when I wrote this song It's for peo-ple like you that

A oo But the sun's been quite kind when I wrote this song It's for peo-ple like you that

T But the sun's been quite kind when I wrote this song It's for peo-ple like you that

B But the sun's been quite kind when I wrote this song It's for peo-ple like you that

Eb

P.C.A. C#m /b /a# A E/b B G#/b# C#m B/d# E F#m7

Synth

Gtr.

Bass

D. S.

Perc.

21

S keep it turned on. And you can tell ev - ry - bo - dy this is your song it may be quite sim - ple but

A keep it turned on. ah...

T keep it turned on. ah...

B keep it turned on. And you can tell ev - ry - bo - dy this is your song it may be quite sim - ple but

Eb

P.C.A. A E E sus4 E B/d# C#m F#m7 A B/d# C#m

Synth

Gtr.

Bass

D. S. continue same style

Perc.

Elton John - Medley 5
03 SSAATBB Combo Eb

36

S

A

T

B

Eb

P.C.A.

Synth

Gtr.

Bass

D. S.

Perc.

mf

Da-niel is tra - v'ling to - night on a plane,

B7/a A E/b B E A/b E

continue same style

45

S

A

T

B

Eb

P.C.A.

Synth

Gtr.

Bass

D. S.

Perc.

I can see the red tail - lights head - ing for Spain. Oh and I can see Da - niel wa - ving good - bye.

F#m E/f# F#m B G# C#m B A B C#m

Elton John - Medley 7
03 SSAATBB Combo Eb

67

S
Time on my hands

A
Time on my hands

T
blues Time on my hands could be time spend with you Laugh-ing like chil-dren, li-ving like lo-vers Rol-ling like

B
blues Time on my hands could be time spend with you Laugh-ing like chil-dren, li-ving like lo-vers Rol-ling like

Eb

P.C.A.
D D A/C# Bm7 A E D A E F#m A/C#

Synth

Gr. *El. Guitar (Overdrive)*
f

Bass

D.S.

Perc.

72

S
ah Laugh-ing like chil-dren li-ving like lo-vers

A
ah Laugh-ing like chil-dren li-ving like lo-vers

T
thun-der un-der the co-vers and I guess that's why they call it the blues and I

B
thun-der un-der the co-vers and I guess that's why they call it the blues and I

Eb

P.C.A.
D B7/d# D D/e E A E F#m C#m

Synth

Gr. *rock guitar style*

Bass
fill - - - - - fill - - - - -

D.S.

Perc.

Elton John - Medley 9
03 SSAATBB Combo Eb

90

S
They crawled out of the wood-work and they whis-pered in - to __ your brain They set you__ on the tread - mill and made you change your name

A

T

B
mf
They crawled out of the wood-work and they whis-pered in - to __ your brain They set you__ on the tread - mill and made you change your name

Eb

P.C.A.
A^{sus4} A E E^{add2} E A E/g# E^{sus4}

Synth

Gtr.

Bass

D. S.

Perc.

97

S
and it seems to me__ you lived your life__ like a can - dle in__ the wind__ Ne-ver know-ing who__ to cling

A
mf
can - dle in__ the wind__ ah

T
mf
can - dle in__ the wind__ ah

B
and it seems to me__ you lived your life__ like a can - dle in__ the wind__ Ne-ver know-ing who__ to cling

Eb

P.C.A.
A A^{add2} A B B⁷ E A E

Synth
Warm Pad

Gtr.
Distortion (bend)

Bass

D. S.

Perc.
Tambourine

Elton John - Medley 11
03 SSAATBB Combo Eb

118

S

A

T

B

Eb

P.C.A.

Synth

Gtr.

Bass

D. S.

Perc.

f

oo — yeah! —

oo — yeah! —

f

I re-mem - ber when rock was young — me and Su -

f

I re-mem - ber when rock was young — me and Su -

Emadd2 E^m C D⁷/c C D G/d D G C/g

mf

(Delay - a little overdrive)

mf

f

Tambourine

f

125

S

A

T

B

Eb

P.C.A.

Synth

Gtr.

Bass

D. S.

Perc.

But the big - gest kick I e - ver got

But the big - gest kick I e - ver got

zie had so much fun — Hol - ding hands — and skim - ming stones — Had an old — gold che - vy and a place of my own — But the big - gest kick I e - ver got

zie had so much fun — Hol - ding hands — and skim - ming stones — Had an old — gold che - vy and a place of my own — But the big - gest kick I e - ver got

B^m C/b B^m C F/c C F/c C D G/d D G

f

fill-----

Elton John - Medley 13
03 SSAATBB Combo Eb

146

S Oh Law-dy Ma-ma those Fri-day nights Cro-co-dile Rock-ing was out of

A Oh Law-dy Ma-ma those Fri-day nights when Su-zie wore her dres-ses tight Cro-co-dile Rock-ing was out of

T Oh Law-dy Ma-ma those Fri-day nights when Su-zie wore her dres-ses tight Cro-co-dile Rock-ing was out of

B Oh Law-dy Ma-ma those Fri-day nights when Su-zie wore her dres-ses tight of

Eb

P.C.A. *Em* *A* *D* *G/d* *C/d G/d* *D*

Synth

Gr. *fill*-----1

Bass

D.S.

Perc.

153

S sight La la la la la la la la la la la la la la

A sight La la la la la la la la la la la la la la

T sight La la la la la la la la la la la la la la

B sight La la la la la la la la la la la la la la

Eb *2nd time only*

P.C.A. *F/c* *C* *F/c* *C* *F/c* *C* *mf* *G* */ff* *Em* */d* *C* */c#* *D* *C/d* *D*

Synth *Strings* *f*

Gr.

Bass

D.S.

Perc. *Handclap*

Elton John - Medley 15
03 SSAATBB Combo Eb

174

S
sun go - ing down on me Ah! Lo - sing ev' - ry - thing is like the sun go - ing down

A
sun go - ing down on me Ah! Lo - sing ev' - ry - thing is like the sun go - ing down on

T
sun go - ing down on me Ah! is like the sun go - ing down on

B
sun go - ing down on me Ah! is like the sun go - ing down on

Eb

P.C.A.
F#m E/g# F#m/a A/b E E/d F#m E/g# F#m/a A/b B#7

Synth

Gr.

Bass

D. S.

Perc.

A Bit Slower
Your Song

179

S
I hope you don't mind I hope you don't mind that I put down in words how won - der - full life is while you're in the world

A
me how won - der - full life is while you're in the world

T
me how won - der - full life is while you're in the world

B
me how won - der - full life is while you're in the world

Eb

P.C.A.
C#m C#m/b /a# Amaj7(6) E/g# A A

Synth

Gr.

Bass
p

D. S.
Cymbal (timp sticks) p lv.

Perc.
Barchimes p

Elton John - Medley

(Can You Feel The Love Tonight - Your Song - Daniel - Candle In The Wind -
Crocodile Rock - Don't Let The Sun Go Down On Me)

Copyrights: see full score
Arranged by Dirk Kokx

Ballad (♩ = 66)
Can You Feel The Love Tonight

Your Song

Soprano
Alto
Tenor
Bass

It's a lil-tle bit fun-ny — this feel - ing in - side — I'm not one of those who can ea-si - ly hide —
It's a lil-tle bit fun-ny — this feel - ing in - side — oo — who can ea-si - ly hide.
It's a lil-tle bit fun-ny — this feel - ing in - side — oo — this feel - ing in - side — oo —

1
2
3
4

B F⁷/a[♯] E⁷/g[♯] B E B⁷/d[♯] F⁷/a[♯] B C[♯]m B⁷/d[♯] E A^{major} B⁷/d[♯] G[♯]m C[♯]m /b /a[♯] A

Piano/Combo
Advanced

mf

Strings (programmed octaves)

Synthesizer

mf

Ac. Guitar (solo) Jingles/strings

Guitar

mf

Bass Guitar

mf

Drum Set

p

Percussion

Elton John - Medley 3
04 SSAATBB 4 extra staves

1/5

S and kicked off the moss — Well a few — of the ver-ses — well they've got — me — quite cross — But the sun's been quite kind — when I wrote this song — It's for peo-ple like you that —

A roof — roof — roof — But the sun's been quite kind — when I wrote this song — It's for peo-ple like you that

T roof — roof — But the sun's been quite kind — when I wrote this song — It's for peo-ple like you that

B roof — roof — But the sun's been quite kind — when I wrote this song — It's for peo-ple like you that

1

2

3

4

B/d# G#m C#m /b /a# A E/b B G# /b# C#m B/d# E F#m7

PCA.

Synth

Dr.

Bass

D. S.

Perc.

27

S I hope you don't mind I hope you don't mind that I put down in words how won - der - full life is — while you're In — the world —

A I hope you don't mind I hope you don't mind that I put down in words how won - der - full life is — while you're In — the world —

T I hope you don't mind I hope you don't mind that I put down in words how won - der - full life is — while you're In — the world —

B I hope you don't mind I hope you don't mind that I put down in words how won - der - full life is — while you're In — the world —

1 2 3 4

Chm Chm/b /a# Amaj7 E/g# A A B Bsus4 B

Synth 8

Chm

Ctr. 8

Bass

D. S. Cymbal (timp sticks) *Bardlines* (sticks)

Perc.

Elton John - Medley 7
 04 SSA/ATBB 4 extra staves

46

S *mf* God it looks like Da - niel Must be the clouds In my eyes.

A I can see the red tail lights heading for Spain Oh and I can see Da - niel wa - ving good-bye God it looks like Da - niel Must be the clouds In my eyes.

T

B

1

2

3

4

P.C.A. E/F# F#m B G# C#m B A B C#m A B A/b E

Synth

Git. 8

Bass

D. S.

Perc.

Elton John - Medley 9

04 SSAATBB 4 extra staves

S
 hands _____
 Laughing like chil - dren
 ah _____

A
 hands _____
 ah _____
 Laughing like chil - dren

T
 hands could be time spend with you
 Laughing — like chil - dren, Il - ving like lo - vers
 Rol - ling — like thun - der un - der — the co - vers
 and I guess that's why they call it — the blues

B
 hands could be time spend with you
 Laughing — like chil - dren, Il - ving like lo - vers
 Rol - ling — like thun - der un - der — the co - vers
 and I guess that's why they call it — the blues

1
 2
 3
 4

P.C.A.
 A E D A E F#m A/C# D B7/d# D D/E E A E
El. Guitar (Overtive)
rock guitar style
fill

Synth
 Perc.
 D. S.
 Bass
 Ctr.

103

S
know-ing who to cling — to when the rain — set in — And I would — have liked to have known — you but I — was just a kid — Your can - die burned out long be - fore — your le - gend e - ver did.

A
ah — when the rain — set in — ah — which — which —

T
ah — when the rain — set in — ah — which — which —

B
know-ing who to cling — to when the rain — set in — And I would — have liked to have known — you but I — was just a kid — Your can - die burned out long be - fore — your le - gend e - ver did.

1
2
3
4

E A/e E B A Aadd2 C#m B A

P.C.A.
Synth
Gtr.
Bass
D. S.
Perc.

fill----- 1

fill----- 1

Elton John - Medley 15
04 SSA/ATBB 4 extra staves

123

S
A
T
B

ber when rock was young — me and Su zle had so much fun —
 ber when rock was young — me and Su zle had so much fun —
 ber when rock was young — me and Su zle had so much fun —
 ber when rock was young — me and Su zle had so much fun —

1
2
3
4

G C/g Bm C/b Bm C F/c C F/c C D G/d D G

Synth *mf*

P.C.A.

Gtr. *mf* 8 (Delay - a little overdrive)

Bass *mf*

D. S. *f* *Tabbouche*

Perc. *f*

Had an old gold che - vy and a place of my own — But the big - gest kick I e - ver got
 Had an old gold che - vy and a place of my own — But the big - gest kick I e - ver got
 Had an old gold che - vy and a place of my own — But the big - gest kick I e - ver got
 Had an old gold che - vy and a place of my own — But the big - gest kick I e - ver got

But the big - gest kick I e - ver got
 But the big - gest kick I e - ver got
 But the big - gest kick I e - ver got
 But the big - gest kick I e - ver got

fill-----1

Elton John - Medley 17
 04 SSAATBB 4 extra staves

140

S some - thing shock - ing when ah _____ I ne - ver knew me a bet - ter time — Oh — Law - dy Ma - ma those Fri - day nights

A some - thing shock - ing when your feet just can't keep still — I ne - ver knew me a bet - ter time — and I guess — I ne - ver will — Oh — Law - dy Ma - ma those Fri - day nights when

T some - thing shock - ing when your feet just can't keep still — I ne - ver knew me a bet - ter time — and I guess — I ne - ver will — Oh — Law - dy Ma - ma those Fri - day nights when

B some - thing shock - ing when your feet just can't keep still — I ne - ver knew me a bet - ter time — Oh — Law - dy Ma - ma those Fri - day nights when

1

2

3

4

Em D Em A Gadd2/aD/a A D G/G D G Em

P.C.A.

Synth

Git.

Bass

D. S.

Perc.

fill

Very Broadly (♩ = 72)
Don't Let The Sun Go Down On Me

1. 2. *rit.*

S. la _____ la _____ ah...
A. la _____ la _____ ah...
T. la _____ la _____ ah... (formal)
B. la _____ la _____ ah... (formal)

Don't let the sun _____ go down on me _____
Ah-though I search my-self it's al-ways some-one else I see
I'd just al-low a frag-ment of your life

1. 2. 3. 4.

D C/D D D B7 /d# E E sus4 E E/d C#m F# /a# E/b

Synth Perc. D.S. Bass Ctr. P.C.A.

Distortion
Tambourine
f
rit.

A Bit Slower
Your Song

Elton John - Medley 21
04 SSAATBB 4 extra staves

Sheet music for "A Bit Slower" by Elton John, featuring vocal parts (Soprano, Alto, Tenor, Bass) and instrumental accompaniment (Piano, Percussion, Synthesizer, and Acoustic Guitar).

Vocal Parts:

- Soprano (S):** I hope you don't mind I hope you don't mind that I put down in words how wonder - full life is while you're in the world I hope you don't mind
- Alto (A):** I hope you don't mind I hope you don't mind that I put down in words how wonder - full life is while you're in the world I hope you don't mind
- Tenor (T):** I hope you don't mind I hope you don't mind that I put down in words how wonder - full life is while you're in the world I hope you don't mind
- Bass (B):** I hope you don't mind I hope you don't mind that I put down in words how wonder - full life is while you're in the world I hope you don't mind

Instrumental Parts:

- Piano (P.C.A.):** Chords: C^{dim}, C^{dim}/b, /a[#], A^{major}(7), E/g[#], A, A, B, Bsus4, B, C^{dim}, C^{dim}/b. Dynamics: p, mp, mf, f.
- Percussion (Perc.):** Includes Conga (temp sticks), Barchinas, and Tomtom. Dynamics: p, f.
- Acoustic Guitar (Acoustic):** Dynamics: p, f.
- Synthesizer (Synth):** Dynamics: p, f.



Elton John - Medley

(Can You Feel The Love Tonight - Your Song - Daniel - Candle In The Wind - Crocodile Rock - Don't Let The Sun Go Down On Me)

Your Song Words & Music by Elton John & Bernie Taupin
 © Copyright 1969 Dick James Music Limited. Universal/Dick James Music Limited. This arrangement © Copyright 2017 Dick James Music Limited. All Rights Reserved. International Copyright Secured. Used by permission of Music Sales Limited.

Daniel Words & Music by Elton John & Bernie Taupin
 © Copyright 1972 Dick James Music Limited
 Universal/Dick James Music Limited This arrangement © Copyright 2017 Dick James Music Limited All Rights Reserved. International Copyright Secured. Used by permission of Music Sales Limited.

I Guess That's Why They Call It The Blues Words & Music by Elton John, Bernie Taupin & Davey Johnstone © Copyright 1983 Big Pig Music Limited/Rouge Booze Incorporated/HST Publishing Limited.
 Universal Music Publishing Limited. This arrangement © Copyright 2017 Big Pig Music Limited/Rouge Booze Incorporated/HST Publishing Limited. All Rights Reserved. International Copyright Secured.
 Used by permission of Music Sales Limited.

Candle In The Wind Words & Music by Elton John & Bernie Taupin
 Copyright © 1973 UNIVERSAL/DICK JAMES MUSIC LTD. Copyright Renewed All Rights in the United States and Canada Controlled and Administered by UNIVERSAL - SONGS OF POLYGRAM INTERNATIONAL, INC. All Rights Reserved Used by Permission

Crocodile Rock Words & Music by Elton John & Bernie Taupin
 © Copyright 1972 Dick James Music Limited. Universal/Dick James Music Limited. This arrangement © Copyright 2017 Dick James Music Limited. All Rights Reserved. International Copyright Secured. Used by permission of Music Sales Limited.

Don't Let The Sun Go Down On Me Words & Music by Elton John & Bernie Taupin
 © Copyright 1974 HST Management Limited/Rouge Booze Incorporated. Universal Music Publishing Limited. This arrangement © Copyright 2017 HST Management Limited/Rouge Booze Incorporated. All Rights Reserved. International Copyright Secured. Used by permission of Music Sales Limited.

Can You Feel The Love Tonight Words & Music By Elton John & Tim Rice
 © 1994 Wonderland Music Company Inc, USA This arrangement © 2014 Wonderland Music Company Inc, USA Warner/Chappell Music Ltd, London W6 8BS Reproduced by permission of Faber Music Ltd. All Rights Reserved

Arranged by Dirk Kokx

Ballad (♩ = 66)
Can You Feel The Love Tonight

Soprano
 Alto
 Tenor
 Bass
 Piano Combo Advanced
 Guitar
 Bass Guitar
 Drum Set
 Percussion

Chord progression: B F#/a# E/g# B E B/d# F#/a# B C#m B/d#

Elton John - Medley 3
05 SSAATBB small Combo

13

S live. I sat on the roof and kicked the moss Well a few of the ver-ses well they've got

A live. oo on the roof oo oo

T live. oo on the roof oo

B live. oo on the roof oo

P.C.A. B B_{sus4} B E A_{Maj7} B/_{d#} G_{#m} C_{#m} /_b

Gtr.

Bass

D. S. *mf*

Perc. *mf*
Barchimes

17

S me quite cross But the sun's been quite kind when I wrote this song It's for peo-ple like you that

A But the sun's been quite kind when I wrote this song It's for peo-ple like you that

T But the sun's been quite kind when I wrote this song It's for peo-ple like you that

B But the sun's been quite kind when I wrote this song It's for peo-ple like you that

P.C.A. /_{a#} A E/_b B G_{#/b#} C_{#m} B/_{d#} E F_{#m7}

Gtr.

Bass

D. S.

Perc.

Elton John - Medley 5
05 SSAATBB small Combo

29

S
words how won - der - full life is ___ while you're in ___ the world ___

A
words how won - der - full life is ___ while you're in ___ the world ___

T
words how won - der - full life is ___ while you're in ___ the world ___

B
words how won - der - full life is ___ while you're in ___ the world ___

Amaj7 E/g# A A B B sus4 B

P.C.A.

Gtr.

Bass

D. S.
Cymbal (timp sticks) Barchimes (sticks)

Perc.

33

S

A

T

B

E A/e B/e A/e E

P.C.A.
(con Ped.)

Gtr.
strumming - easy feel

Bass

D. S.

Perc.
Barchimes Shaker

Andante (♩ = 132)
Daniel

Elton John - Medley 7
05 SSAATBB small Combo

49 *mf*

S
A
T
B

head-ing for Spain. _____ Oh__ and I can see Da - niel wa - ving good-bye. _____ God it looks

P.C.A.
G# C#m B A B C#m

Gtr.
Bass
D. S.
Perc.

55

S
A
T
B

__ like Da - niel. Must be__ the clouds _____ in__ my__ eyes. Oh God, it

__ like Da - niel. Must be__ the clouds _____ in__ my__ eyes. Oh God, it

P.C.A.
A B A/b E

Gtr.
Bass
D. S.
Perc.

Elton John - Medley 9
05 SSAATBB small Combo

69

S
A
T
B

you Laugh - ing like chil - d'ren, li - ving like lo - vers Rol - ling like thun - der un - der the

you Laugh - ing like chil - d'ren, li - ving like lo - vers Rol - ling like thun - der un - der the

D A E F#m A/C# D

PC.A.

Gtr. *El. Guitar (Overdrive)*

Bass

D. S.

Perc.

73

S
A
T
B

Laugh-ing like chil - d'ren li - ving like lo - vers

Laugh-ing like chil - d'ren li - ving like lo - vers

co - vers and I guess that's why they call it the blues and I

co - vers and I guess that's why they call it the blues and I

B7/d# D D/e E A E F#m C#m

PC.A.

Gtr. *rock guitar style*

Bass

D. S.

Perc.

Elton John - Medley 11
05 SSAATBB small Combo

85

S
knew you at all you had the grace to hold your-self while those a-round you crawled ____ They crawled out of the

A

T

B
mf

They crawled out of the

P.C.A.
A A^{add2} E/g# E^{sus4} E A A^{sus4} A

Gtr.

Bass

D. S.

Perc.

91

S
wood-work and they whis-pered in-to__ your brain They set you__ on the tread - mill and made you change your name

A

T

B
wood-work and they whis-pered in-to__ your brain They set you__ on the tread - mill and made you change your name

P.C.A.
E E^{add2} E A E/g# E^{sus4}

Gtr.

Bass

D. S.

Perc.

Elton John - Medley 13
05 SSAATBB small Combo

108

S
— you but I — was just a kid — Your can - dle burned out long be - fore — your le - gend e - ver did. —

A
— whoh — whoh —

T
whoh — whoh —

B
— you but I — was just a kid — Your can - dle burned out long be - fore — your le - gend e - ver did. —

P.C.A.
A add2 C#m B A

Gtr.

Bass

D. S.

Perc.

fill ----- 7

113

Fast Rock (♩ = 142 - 146) **Crocodile Rock**

S
oo — yeah!

A
oo — yeah!

T

B

P.C.A.
A E/g# F#m7 E G C/g G Em Emadd2 Em

Gtr.
(bend)

Bass

D. S.

Perc.

fill ----- 7

Elton John - Medley 15
05 SSAATBB small Combo

130

S
A
T
B

But the big - gest kick I e - ver got _____ was do - ing a thing called the Cro - co - dile _____ Rock _____ While the o -

place of my own_ But the big - gest kick I e - ver got _____ was do - ing a thing called the Cro - co - dile _____ Rock _____ While the o -

G/d D G C/g G Bm C/b B^m

Gr.

Bass

D. S.

Perc.

135

S
A
T
B

- ther kids were Rock - ing Round The Clock _____ we were hop - ping and bop - ping to the Cro - co - dile Rock well

- ther kids were Rock - ing Round The Clock _____ we were hop - ping and bop - ping to the Cro - co - dile Rock well

- ther kids were Rock - ing Round The Clock _____ we were hop - ping and bop - ping to the Cro - co - dile Rock well

- ther kids were Rock - ing Round The Clock _____ we were hop - ping and bop - ping to the Cro - co - dile Rock well

C F/c C F/c C D G/d D

Gr.

Bass

D. S.

Perc.

149

S
Cro-co-dile Rock-ing was out _____ of sight _____

A
Su-zie wore her dres - ses tight _____ Cro-co-dile Rock-ing was out _____ of sight _____

T
Su-zie wore her dres - ses tight _____ Cro-co-dile Rock-ing was out _____ of sight _____

B
Su-zie wore her dres - ses tight _____ of sight _____

P.C.A.
A D G/d C/d G/d D F/c C F/c C F/c C

Gtr.

Bass

D. S.

Perc.

155

S
La _____ la la la la _____ la la la la _____ la la la la _____

A

T
(falset) La _____ la la la la _____ la la la la _____ la la la la _____

B
(falset) La _____ la la la la _____ la la la la _____ la la la la _____

P.C.A.
G /f# Em /d C /c# D C/d D

Gtr.

Bass

D. S.

Perc.
Handclap

171

S oh oh ah

is like the sun go - ing down on me

A free but lo - sing ev' - ry - thing is like the sun go - ing down on me

T is like the sun go - ing down on me

B is like the sun go - ing down on me

P.C.A. E E/d E7/b A/C# F#m E/g# F#m/a A/b E

Gtr.

Bass

D. S. fill

Perc.

A Bit Slower
Your Song

176

S Ah! Lo - sing ev' - ry - thing is like the sun go - ing down I hope you don't mind I hope you don't mind

A Ah! Lo - sing ev' - ry - thing is like the sun go - ing down on me

T Ah! is like the sun go - ing down on me

B Ah! is like the sun go - ing down on me

P.C.A. Ah! E/d A/C# F#m E/g# F#m/a A/b B#7 C#m C#m/b

Gtr.

Bass

D. S.

Perc.

186

S *mf*
that I put down in words how won - der - full life is while

A *mf*
that I put down in words how won - der - full life is while

T *mf*
that I put down in words how won - der - full life is while

B *mf*
that I put down in words how won - der - full life is while

P.C.A. *mp* *cresc.*
/a# Amaj7(6) E/g# A

Gtr.

Bass *mp*

D. S. (Ride) *mp* Barchimes

Perc.

189

S *f* *rall.*
you're in the world

A *f*
you're in the world

T *f*
you're in the world

B *f*
you're in the world

P.C.A. *f* (con Ped.)
A E A/e B/e A E/g# F#m7 E

Gtr. *f*

Bass *f*

D. S. *f* Tambourine

Perc. *f*

06 SSAATBB small Combo extra staves

Elton John - Medley

(Can You Feel The Love Tonight - Your Song - Daniel - Candle In The Wind -
Crocodile Rock - Don't Let The Sun Go Down On Me)

Copyrights: see full score
Arranged by Dirk Kokx

Ballad (♩ = 66)
Can You Feel The Love Tonight

Soprano *mf* Your Song
It's a lil - the bit fun - ry — this feel - ing in - side — I'm not one of those who can

Alto *mf*
It's a lil - the bit fun - ry — this feel - ing in - side — oo — oo —

Tenor *mf*
It's a lil - the bit fun - ry — this feel - ing in - side — oo — oo — who can —

Bass *mf*
It's a lil - the bit fun - ry — this feel - ing in - side — oo — oo —

1
2

B F#/a# E/g# B E B/d# F#/a# B C#m B/d# E A#m7 B/d# G#m C#m /b

Piano Combo Advanced *mf*
Ac. Guitar (ryton) fingerpicking *p*

Guitar *mf*

Bass Guitar *mf*

Drum Set *p*

Percussion

Elton John - Medley 3
 06 SSAATBB small Combo extra staves

1/3

S
 I sat on the roof and kicked off the moss — Well a few — of the ver- ses — well they've got — me quite cross —

A
 live: 00 — on the roof

T
 live: 00 — on the roof

B
 live: 00 — on the roof

1
 2

B
 Bsus4 B E A^{Major7} B/d[#] G^{dim} C^{dim} /b /a[#] A

Gtr.
 8

Bass
 mf

D. S.
 mf

Perc.
 Barchimes

Elton John - Medley 5
06 SSAATBB small Combo extra staves

23

S And you can tell ev' - rybo - dy this - is your song — it may be quite — sim - ple but now that it's done — I hope you don't mind I hope you don't mind

A ah... ah... I hope you don't mind I hope you don't mind

T ah... I hope you don't mind I hope you don't mind

B And you can tell ev' - rybo - dy this - is your song — it may be quite — sim - ple but now that it's done — I hope you don't mind I hope you don't mind

1

2

P.C.A. B/d# C#m F#m7 A B/d# C#m F#m7 A C#m C#m/b

Gtr. 8

Bass

D. S. continue same style

Perc.

Elton John - Medley 7
06 SSAATBB small Combo extra staves

Andante (♩ = 132)
Daniel

33

S

A

T

B

1

2

E A/e B/e A/e E B7/a A

P.C.A. (con Ped.)

Gtr. 8 strumming - easy feel

Bass

D. S.

Perc. Barchimes Shaker

Elton John - Medley 9
06 SSAATBB small Combo extra staves

47

S *mf*
God it looks

A
I can see the red tail - lights head - ing for Spain. Oh and I can see Da - niel wa - ving good - bye. God it looks

T

B

1
2

B G# C#m B A B C#m

P.C.A.
8 8

Gtr. 8

Bass

D. S.

Perc. /

Blues Rock (♩ = 82)

I Guess That's Why They Call It The Blues

6/4

S: _____ in _____ my _____ eyes. _____

A: _____ in _____ my _____ eyes. _____

T: _____

B: _____

1: _____

2: _____

P.C.A. } A/b E F#m7 E/g# A E/g# D D A/c# Bm7 A E

Gtr. 8

Bass p f

D. S. p f

Perc. Congas f

And I guess that's why they call it the blues

Time on my hands

And I guess that's why they call it the blues

Time on my hands

Time on my hands could be time spend with



7/4

S
 Laugh-ing like chil - dren
 li - ving like lo - vers
 Laugh-ing like chil - dren

A
 Laugh-ing like chil - dren
 li - ving like lo - vers
 Laugh-ing like chil - dren

T
 guess that's why they call it — the blues
 and I guess that's why they call it — the blues

B
 guess that's why they call it — the blues
 and I guess that's why they call it — the blues

1
 2

D D/e E A E F#m C#m D D/e A E

P.C.A.
 P.C.A.
 P.C.A.

Gtr.
 rock guitar style

Bass
 fill

D. S.
 fill

Perc.
 Perc.

99

S seems to me — you lived your life — like a can - die in — the wind — Ne-ver know-ing who — to cling — to when the rain — set in —

A can - die in — the wind — ah — when the rain — set in —

T *mf* can - die in — the wind — ah — when the rain — set in —

B seems to me — you lived your life — like a can - die in — the wind — Ne-ver know-ing who — to cling — to when the rain — set in —

1

2

B B7 E A E A/e E B

P.C.A. *Distortion*

Gtr. *Distortion*

Bass

D. S.

Perc. *Tambourine*

Fast Rock (♩ = 142 - 146) Crocodile Rock

113

S —

A —

T 8

B —

1

2

P.C.A. A E/g# F#m7 E 8 8 f G C/g G Em Emadd2 Em C

Gtr. (bend) f

Bass fill

D. S.

Perc.

oo — yeah! —
oo — yeah! —

127

S —————
 A —————
 T —————
 B —————

— and skin - ming stones — Had an old — gold che - vy and a place of my own — But the big - gest kick | e - ver got — was do - ing a
 — and skin - ming stones — Had an old — gold che - vy and a place of my own — But the big - gest kick | e - ver got — was do - ing a

1
 2

C F/c C F/c C D G/d D G C/g G

P.C.A.
 Gtr.
 Bass
 D. S.
 Perc.

fill

130

S Crocodile Rock - ing is some - thing shock - ing when ah _____

A Crocodile Rock - ing is some - thing shock - ing when your feet just can't keep still _____

T Crocodile Rock - ing is some - thing shock - ing when your feet just can't keep still _____

B Crocodile Rock - ing is some - thing shock - ing when your feet just can't keep still _____ I ne - ver knew me a bet - ter time - and I guess I ne - ver knew me a bet - ter time -

1

2

Em D Em D Em D Em A G^{add2}/aD/a A D G/d D

P.C.A.

Gtr. *f*

Bass

D. S.

Perc. Handclap

132

S out _____ of _____ sight _____ La _____ la la la la _____ la la la la _____

A out _____ of _____ sight _____ La _____ la la la la _____ la la la la _____

T out _____ of _____ sight _____ La _____ la la la la _____ la la la la _____

B out _____ of _____ sight _____ La _____ la la la la _____ la la la la _____

1

2

P.C.A. C/d G/d D F/c C F/c C F/c C G /# Em /d C

Gtr.

Bass

D. S.

Perc. Handclap

167

S
 A
 T
 B
 1
 2
 P.C.A.
 Gtr.
 Bass
 D. S.
 Perc.

Although I search my-self its al-ways some-one else I see -
 I'd just al-low a frag-ment of your life -
 to wan-der free

sun _____ ah... _____

oh _____

Chords: C#m, F#/a#, E/b, A/b, B, E

Fill: fill-----

A Bit Slower
Your Song

177

S Lo - sing ev' - ry - thing is like the sun go - ing down I hope you don't mind I hope you don't mind that I put down in words how

A Lo - sing ev' - ry - thing is like the sun go - ing down on me I hope you don't mind I hope you don't mind that I put down in words how

T is like the sun go - ing down on me I hope you don't mind I hope you don't mind that I put down in words how

B is like the sun go - ing down on me I hope you don't mind I hope you don't mind that I put down in words how

1

2

P.C.A. A/c# F#m E/g# F#m/a A/b B#7 C#m C#m/b /a# Amaj7(6)

Gtr.

Bass

D. S.

Perc.

Cymbal (timp sticks)

mp *p* *mf* *p* *lc*

187

S *mf* how won - der - full life is — while *f* you're in — the world *trill*

A *mf* how won - der - full life is — while *f* you're in — the world

T *mf* how won - der - full life is — while *f* you're in — the world

B *mf* how won - der - full life is — while *f* you're in — the world

words words words words words words words words words words

1

2

P.C.A.

Amaj7(6) *E/g#* *A* *A* *E* *A/e* *B/e* *A* *E/g#* *F#m7* *E*

mp *mp* *mp* *mp* *f* *f* *f* *f* *f* *f*

crusc. (con Ped.)

Gtr.

mp *f*

Bass

mp *f*

D. S.

mp *f*

Banjo

Perc.

f

Tambourine



07 SSAATBB Piano Solo Advanced

Elton John - Medley

(Can You Feel The Love Tonight - Your Song - Daniel - Candle In The Wind - Crocodile Rock - Don't Let The Sun Go Down On Me)

Your Song Words & Music by Elton John & Bernie Taupin
© Copyright 1969 Dick James Music Limited. Universal/Dick James Music Limited. This arrangement © Copyright 2017 Dick James Music Limited. All Rights Reserved. International Copyright Secured. Used by permission of Music Sales Limited.

Daniel Words & Music by Elton John & Bernie Taupin
© Copyright 1972 Dick James Music Limited
Universal/Dick James Music Limited This arrangement © Copyright 2017 Dick James Music Limited All Rights Reserved. International Copyright Secured. Used by permission of Music Sales Limited.

I Guess That's Why They Call It The Blues Words & Music by Elton John, Bernie Taupin & Davey Johnstone © Copyright 1983 Big Pig Music Limited/Rouge Booz Incorporated/HST Publishing Limited.
Universal Music Publishing Limited. This arrangement © Copyright 2017 Big Pig Music Limited/Rouge Booz Incorporated/HST Publishing Limited. All Rights Reserved. International Copyright Secured. Used by permission of Music Sales Limited.

Candle In The Wind Words & Music by Elton John & Bernie Taupin
Copyright © 1973 UNIVERSAL/DICK JAMES MUSIC LTD. Copyright Renewed All Rights in the United States and Canada Controlled and Administered by UNIVERSAL - SONGS OF POLYGRAM INTERNATIONAL, INC. All Rights Reserved. Used by Permission

Crocodile Rock Words & Music by Elton John & Bernie Taupin
© Copyright 1972 Dick James Music Limited. Universal/Dick James Music Limited. This arrangement © Copyright 2017 Dick James Music Limited. All Rights Reserved. International Copyright Secured. Used by permission of Music Sales Limited.

Don't Let The Sun Go Down On Me Words & Music by Elton John & Bernie Taupin
© Copyright 1974 HST Management Limited/Rouge Booz Incorporated. Universal Music Publishing Limited. This arrangement © Copyright 2017 HST Management Limited/Rouge Booz Incorporated. All Rights Reserved. International Copyright Secured. Used by permission of Music Sales Limited.

Can You Feel The Love Tonight Words & Music By Elton John & Tim Rice
© 1994 Wonderland Music Company Inc, USA This arrangement © 2014 Wonderland Music Company Inc, USA Warner/Chappell Music Ltd, London W6 8BS Reproduced by permission of Faber Music Ltd. All Rights Reserved

Arranged by Dirk Kokx

Ballad (♩ = 66)
Can You Feel The Love Tonight

Piano Solo Advanced

mf

B F#/a# E/g# B E B/d# F#/a# B C#m B/d#

Your Song

S

A

T

B

mf

It's a lit-tle bit fun-ny this feel - ing in - side I'm not one of those who can

It's a lit-tle bit fun-ny this feel - ing in - side oo oe

It's a lit-tle bit fun-ny this feel - ing in - side oo who can

It's a lit-tle bit fun-ny this feel - ing in - side oo

E A Maj7 B/d# G#m C#m /b

P.S.A.

Elton John - Medley 3
07 SSAATBB Piano Solo Advanced

14

S
I sat on the roof and kicked of the moss Well a few of the ver-ses well they've got

A
oo on the roof oo oo

T
oo on the roof oo

B
oo on the roof oo

E A^{Maj7} B/^{d#} G^{#m} C^{#m} /^b

P.S.A.

17

S
me quite cross But the sun's been quite kind when I wrote this song

A
But the sun's been quite kind when I wrote this song

T
But the sun's been quite kind when I wrote this song

B
But the sun's been quite kind when I wrote this song

/^{a#} A E/^b B G^{#/b#} C^{#m} B/^{d#}

P.S.A.

26

S
now that it's done — I hope you don't mind I hope you don't mind that I put down in

A
I hope you don't mind I hope you don't mind that I put down in

T
I hope you don't mind I hope you don't mind that I put down in

B
now that it's done — I hope you don't mind I hope you don't mind that I put down in

P.S.A.
F#m7 A C#m C#m/b /a#

29

S
words how won-der - full life is — while you're in — the world —

A
words how won-der - full life is — while you're in — the world —

T
words how won-der - full life is — while you're in — the world —

B
words how won-der - full life is — while you're in — the world —

P.S.A.
Amaj7 E/g# A A B B_{sus4} B

53 *mf*

S
A

God it looks ___ like Da - niel.
God it looks ___ like Da - niel.

C#m A

P.S.A.

57

S
A

Must be ___ the clouds ___ in ___ my ___ eyes. Oh God, it
Must be ___ the clouds ___ in ___ my ___ eyes. Oh God, it

B A/b E

P.S.A.

61 *rit.*

S
A

looks like Da - niel Must be ___ the clouds ___ in ___ my ___
looks like Da - niel Must be ___ the clouds ___ in ___ my ___

A B A/b

P.S.A.

71

S
ah _____

A
ah _____

T
8
lo - vers Rol - ling like thun - der un - der the co - vers and I

B
lo - vers Rol - ling like thun - der un - der the co - vers and I

P.S.A.
F#m A/C# D B7/d#

74

S
Laugh - ing like chil - d'ren li - ving like lo - vers

A
Laugh - ing like chil - d'ren li - ving like lo - vers

T
8
guess that's why they call it the blues and I

B
guess that's why they call it the blues and I

P.S.A.
D D/e E A E F#m C#m

Not too slow (♩ = 126)
Candle In The Wind

83

S *mf* Good-bye Nor - ma Jean _____ though I ne - ver knew you at all you had the grace to

A

T

B

P.S.A. E E^{sus4} E A A^{add2}

87

S hold your - self _____ while those a - round you crawled _____ They crawled out of the

A

T

B *mf* They crawled out of the

P.S.A. E/g# E^{sus4} E A A^{sus4} A

101

S
can - dle in the wind Ne-ver know-ing who to cling to when the rain

A
mf can - dle in the wind ah when the rain

T
mf can - dle in the wind ah when the rain

B
can - dle in the wind Ne-ver know-ing who to cling to when the rain

E A E A/e E

P.S.A.

105

S
set in. And I would have liked to have known you but I was

A
set in. ah whoh

T
set in. ah whoh

B
set in. And I would have liked to have known you but I was

B A A^{add2}

P.S.A.

119

S

A

T

B

f

f

I re - mem -

I re - mem -

C D⁷/c C D G/d D

P.S.A.

123

S

A

T

B

- ber when rock was young — me and Su - zie had so much fun — Hol - ding hands

- ber when rock was young — me and Su - zie had so much fun — Hol - ding hands

G C/g B^m C/b B^m

P.S.A.

135

S
- ther kids were Rock - ing Round The Clock we were hop - ping and bop - ping to the Cro-co - dile Rock well

A
- ther kids were Rock - ing Round The Clock we were hop - ping and bop - ping to the Cro-co - dile Rock well

T
8
- ther kids were Rock - ing Round The Clock we were hop - ping and bop - ping to the Cro-co - dile Rock well

B
- ther kids were Rock - ing Round The Clock we were hop - ping and bop - ping to the Cro-co - dile Rock well

C F/c C F/c C D G/d D

P.S.A.

139

S
Cro-co-dile Rock - ing is some - thing shock - ing when ah

A
Cro-co-dile Rock - ing is some - thing shock - ing when your feet just can't keep still

T
8
Cro-co-dile Rock - ing is some - thing shock - ing when your feet just can't keep still

B
Cro-co-dile Rock - ing is some - thing shock - ing when your feet just can't keep still

E_m D E_m D E_m D E_m A G^{add2}/aD/a A

P.S.A.

151

S
Cro - co - dile Rock - ing was out of sight

A
Cro - co - dile Rock - ing was out of sight

T
8
Cro - co - dile Rock - ing was out of sight

B
of sight

D G/d C/d G/d D F/c C F/c C F/c C

P.S.A.

155

S
La la la la la la la la la la

A

T
8
(falset) La la la la la la la la la la

B
8
(falset) La la la la la la la la la la

G /f# E_m /d C /C#

P.S.A.

168

S

A

T

B

P.S.A.

F#/a# E/b A/b B

some-one else I see _ I'd just al-low a frag-ment of your life _____ to wan-der

171

S

A

T

B

P.S.A.

E E/d E7/b A/c# F#m E/g# F#m/a A/b

oh _____ oh - ah _____

is like the sun go - ing down on _

free but lo - sing ev' - ry - thing is like the sun go - ing down on _

is like the sun go - ing down on

is like the sun go - ing down on

182

S
A
T
B

won - der - full life is ___ while you're in ___ the world ___

won - der - full life is ___ while you're in ___ the world ___

won - der - full life is ___ while you're in ___ the world ___

won - der - full life is ___ while you're in ___ the world ___

E/g# A A B B_{sus4} B

P.S.A.

185

S
A
T
B

I hope you don't mind I hope you don't mind that I put ___ down in

I hope you don't mind I hope you don't mind that I put ___ down in

I hope you don't mind I hope you don't mind that I put ___ down in

I hope you don't mind I hope you don't mind that I put ___ down in

C#m C#m/b /a#

P.S.A.



08 SSAATBB Piano Solo Moderated

Elton John - Medley

(Can You Feel The Love Tonight - Your Song - Daniel - Candle In The Wind - Crocodile Rock - Don't Let The Sun Go Down On Me)

Your Song Words & Music by Elton John & Bernie Taupin
© Copyright 1969 Dick James Music Limited. Universal/Dick James Music Limited. This arrangement © Copyright 2017 Dick James Music Limited. All Rights Reserved. International Copyright Secured. Used by permission of Music Sales Limited.

Daniel Words & Music by Elton John & Bernie Taupin
© Copyright 1972 Dick James Music Limited
Universal/Dick James Music Limited This arrangement © Copyright 2017 Dick James Music Limited All Rights Reserved. International Copyright Secured. Used by permission of Music Sales Limited.

I Guess That's Why They Call It The Blues Words & Music by Elton John, Bernie Taupin & Davey Johnstone © Copyright 1983 Big Pig Music Limited/Rouge Boozee Incorporated/HST Publishing Limited.
Universal Music Publishing Limited. This arrangement © Copyright 2017 Big Pig Music Limited/Rouge Boozee Incorporated/HST Publishing Limited. All Rights Reserved. International Copyright Secured. Used by permission of Music Sales Limited.

Candle In The Wind Words & Music by Elton John & Bernie Taupin
Copyright © 1973 UNIVERSAL/DICK JAMES MUSIC LTD. Copyright Renewed All Rights in the United States and Canada Controlled and Administered by UNIVERSAL - SONGS OF POLYGRAM INTERNATIONAL, INC. All Rights Reserved Used by Permission

Crocodile Rock Words & Music by Elton John & Bernie Taupin
© Copyright 1972 Dick James Music Limited. Universal/Dick James Music Limited. This arrangement © Copyright 2017 Dick James Music Limited. All Rights Reserved. International Copyright Secured. Used by permission of Music Sales Limited.

Don't Let The Sun Go Down On Me Words & Music by Elton John & Bernie Taupin
© Copyright 1974 HST Management Limited/Rouge Boozee Incorporated. Universal Music Publishing Limited. This arrangement © Copyright 2017 HST Management Limited/Rouge Boozee Incorporated. All Rights Reserved. International Copyright Secured. Used by permission of Music Sales Limited.

Can You Feel The Love Tonight Words & Music By Elton John & Tim Rice
© 1994 Wonderland Music Company Inc, USA This arrangement © 2014 Wonderland Music Company Inc, USA Warner/Chappell Music Ltd, London W6 8BS Reproduced by permission of Faber Music Ltd. All Rights Reserved

Ballad (♩ = 66)

Arranged by Dirk Kokx

Can You Feel The Love Tonight

Piano Solo
Moderated

B F#/a# E/g# B E B/d# F#/a# B C#m B/d#

Your Song

5 *mf*

S
A
T
B

mf It's a lit-tle bit fun-ny _____ this feel - ing in - side _____ I'm not one of those who can
It's a lit-tle bit fun-ny _____ this feel - ing in - side _____ oo _____ oe
mf
mf It's a lit-tle bit fun-ny _____ this feel - ing in - side _____ oo _____ who can
It's a lit-tle bit fun-ny _____ this feel - ing in - side _____ oo

E A_{Maj7} B/d# G#m C#m /b

P.S.M.

Elton John - Medley 3
08 SSAATBB Piano Solo Moderated

14

S I sat on the roof and kicked of the moss ____ Well a few ____ of the ver-ses ____ well they've got

A oo on the roof oo oe

T oo on the roof oo

B oo on the roof oo

E A^{Maj7} B/^{d#} G^{#m} C^{#m} /^b

P.S.M.

17

S me quite cross ____ But the sun's been quite kind ____ when I wrotethis song ____

A But the sun's been quite kind ____ when I wrotethis song

T But the sun's been quite kind ____ when I wrotethis song

B But the sun's been quite kind ____ when I wrotethis song

/^{a#} A E/^b B G[#]/^{b#} C^{#m} B/^{d#}

P.S.M.

Elton John - Medley 5
08 SSAATBB Piano Solo Moderated

26

S
now that it's done_ I hope you don't mind I hope you don't mind that I put down in

A
I hope you don't mind I hope you don't mind that I put down in

T
I hope you don't mind I hope you don't mind that I put down in

B
now that it's done_ I hope you don't mind I hope you don't mind that I put down in

P.S.M.
F#m7 A C#m C#m/b /a#

29

S
words how won - der - full life is_ while you're in_ the world_

A
words how won - der - full life is_ while you're in_ the world_

T
words how won - der - full life is_ while you're in_ the world_

B
words how won - der - full life is_ while you're in_ the world_

P.S.M.
Amaj7 E/g# A A B Bsus4 B

53 *mf*

S
A

God it looks like Da - niel.
God it looks like Da - niel.

C#m A

P.S.M.

57

S
A

Must be the clouds in my eyes. Oh God, it
Must be the clouds in my eyes. Oh God, it

B A/b E

P.S.M.

61 *rit.*

S
A

looks like Da - niel Must be the clouds in my
looks like Da - niel Must be the clouds in my

A B A/b

P.S.M.

71

S
ah

A
ah

T
8
lo - vers Rol - ling like thun - der un - der the co - vers and I

B
lo - vers Rol - ling like thun - der un - der the co - vers and I

P.S.M.
F#m A/c# D B7/d#

74

S
Laugh - ing like chil - d'ren li - ving like lo - vers

A
Laugh - ing like chil - d'ren li - ving like lo - vers

T
8
guess that's why they call it the blues and I

B
guess that's why they call it the blues and I

P.S.M.
D D/e E A E F#m C#m

Not too slow (♩ = 126)
Candle In The Wind

83

S *mf* Good-bye Nor - ma Jean _____ though I ne - ver knew you at all you had the grace to

A

T

B

P.S.M. E E^{sus4} E A A^{add2}

87

S hold your - self _____ while those a - round you crawled _____ They crawled out of the

A

T

B *mf* They crawled out of the

P.S.M. E/g# E^{sus4} E A A^{sus4} A

101

S
can - dle in the wind Ne-ver know-ing who to cling to when the rain

A
mf can - dle in the wind ah when the rain

T
mf can - dle in the wind ah when the rain

B
can - dle in the wind Ne-ver know-ing who to cling to when the rain

E A E A/e E

P.S.M.

105

S
set in. And I would have liked to have known you but I was

A
set in. ah whoh

T
set in. ah whoh

B
set in. And I would have liked to have known you but I was

B A A^{add2}

P.S.M.

119

S
A
T
B

f I re - mem -
f I re - mem -

C D⁷/c C D G/d D

P.S.M.

123

S
A
T
B

- ber when rock was young ___ me and Su - zie had so much fun ___ Hol - ding hands
- ber when rock was young ___ me and Su - zie had so much fun ___ Hol - ding hands

G C/g B_m C/b B^m

P.S.M.

135

S
- ther kids were Rock - ing Round The Clock we were hop - ping and bop - ping to the Cro-co - dile Rock well

A
- ther kids were Rock - ing Round The Clock we were hop - ping and bop - ping to the Cro-co - dile Rock well

T
8
- ther kids were Rock - ing Round The Clock we were hop - ping and bop - ping to the Cro-co - dile Rock well

B
- ther kids were Rock - ing Round The Clock we were hop - ping and bop - ping to the Cro-co - dile Rock well

C F/c C F/c C D G/d D

P.S.M.

139

S
Cro-co-dile Rock - ing is some - thing shock - ing when ah

A
Cro-co-dile Rock - ing is some - thing shock - ing when your feet just can't keep still

T
8
Cro-co-dile Rock - ing is some - thing shock - ing when your feet just can't keep still

B
Cro-co-dile Rock - ing is some - thing shock - ing when your feet just can't keep still

Em D Em D Em D Em A G^{add2}/aD/a A

P.S.M.

151

S
Cro - co - dile Rock - ing was out of sight

A
Cro - co - dile Rock - ing was out of sight

T
Cro - co - dile Rock - ing was out of sight

B
Cro - co - dile Rock - ing was out of sight

P.S.M.
D G/d C/d G/d D F/c C F/c C F/c C

155

S
La la la la la la la la la la

A
La la la la la la la la la la

T
(falset) La la la la la la la la la la

B
(falset) La la la la la la la la la la

P.S.M.
G /f# E_m /d C /C#

168

S

A

T

B

P.S.M.

F#/a# E/b A/b B

some-one else I see _ I'd just al-low a frag-ment of your life _____ to wan-der

171

S

A

T

B

P.S.M.

E E/d E7/b A/C# F#m E/g# F#m/a A/b

oh _____ oh - ah _____

is like the sun go - ing down on _

free but lo - sing ev' - ry - thing is like the sun go - ing down on _

is like the sun go - ing down on

is like the sun go - ing down on

182

S
A
T
B

won - der - full life is ___ while you're in ___ the world ___

won - der - full life is ___ while you're in ___ the world ___

won - der - full life is ___ while you're in ___ the world ___

won - der - full life is ___ while you're in ___ the world ___

E/g# A A B B_{sus4} B

P.S.M.

185

S
A
T
B

f I hope you don't mind I hope you don't mind that I put ___ down in

f I hope you don't mind I hope you don't mind that I put ___ down in

f I hope you don't mind I hope you don't mind that I put ___ down in

f I hope you don't mind I hope you don't mind that I put ___ down in

C#m C#m/b /a#

P.S.M.



Elton John - Medley

(Can You Feel The Love Tonight - Your Song - Daniel - Candle In The Wind - Crocodile Rock - Don't Let The Sun Go Down On Me)

Your Song Words & Music by Elton John & Bernie Taupin
© Copyright 1969 Dick James Music Limited. Universal/Dick James Music Limited. This arrangement © Copyright 2017 Dick James Music Limited. All Rights Reserved. International Copyright Secured. Used by permission of Music Sales Limited.

Daniel Words & Music by Elton John & Bernie Taupin
© Copyright 1972 Dick James Music Limited
Universal/Dick James Music Limited This arrangement © Copyright 2017 Dick James Music Limited All Rights Reserved. International Copyright Secured. Used by permission of Music Sales Limited.

I Guess That's Why They Call It The Blues Words & Music by Elton John, Bernie Taupin & Davey Johnstone © Copyright 1983 Big Pig Music Limited/Rouge Booze Incorporated/HST Publishing Limited.
Universal Music Publishing Limited. This arrangement © Copyright 2017 Big Pig Music Limited/Rouge Booze Incorporated/HST Publishing Limited. All Rights Reserved. International Copyright Secured.
Used by permission of Music Sales Limited.

Candle In The Wind Words & Music by Elton John & Bernie Taupin
Copyright © 1973 UNIVERSAL/DICK JAMES MUSIC LTD. Copyright Renewed All Rights in the United States and Canada Controlled and Administered by UNIVERSAL - SONGS OF POLYGRAM INTERNATIONAL, INC. All Rights Reserved Used by Permission

Crocodile Rock Words & Music by Elton John & Bernie Taupin
© Copyright 1972 Dick James Music Limited. Universal/Dick James Music Limited. This arrangement © Copyright 2017 Dick James Music Limited. All Rights Reserved. International Copyright Secured. Used by permission of Music Sales Limited.

Don't Let The Sun Go Down On Me Words & Music by Elton John & Bernie Taupin
© Copyright 1974 HST Management Limited/Rouge Booze Incorporated. Universal Music Publishing Limited. This arrangement © Copyright 2017 HST Management Limited/Rouge Booze Incorporated. All Rights Reserved. International Copyright Secured. Used by permission of Music Sales Limited.

Can You Feel The Love Tonight Words & Music By Elton John & Tim Rice
© 1994 Wonderland Music Company Inc, USA This arrangement © 2014 Wonderland Music Company Inc, USA Warner/Chappell Music Ltd, London W6 8BS Reproduced by permission of Faber Music Ltd. All Rights Reserved

Arranged by Dirk Kokx

Ballad (♩ = 66)

Can You Feel The Love Tonight Your Song

Soprano

Alto

Tenor

Bass

It's a lit-tle bit fun-ny ___ this feel - ing in-side ___ oo

It's a lit-tle bit fun-ny ___ this feel - ing in-side ___ oo

It's a lit-tle bit fun-ny ___ this feel - ing in-side ___ oo

It's a lit-tle bit fun-ny ___ this feel - ing in-side ___ oo

11

S I'd buy a big house where ³ we both could live.

A I'd buy a big house where we both could live.

T I'd buy a big house where we both could live.

B I'd buy a big house where we both could live.

14

S I sat on the roof and kicked of the moss ³ Well a few

A oo on the roof oo

T oo on the roof oo

B oo on the roof oo

20

S
It's for peo-ple like you that keep it turned on. _____

A
It's for peo-ple like you that keep it turned on. _____

T
It's for peo-ple like you that keep it turned on. _____

B
It's for peo-ple like you that keep it turned on. _____

23

S
And you can tell ev'-ry-bo - dy this is your song it may be quite sim - ple but

A
ah... _____

T
ah... _____

B
And you can tell ev'-ry-bo - dy this is your song it may be quite sim - ple but

Andante (♩ = 132)
Daniel 8

31

S
you're in the world

A
you're in the world

T
you're in the world

B
you're in the world

43 *mf*

A
Da-niel is tra - v'ling to - night on a plane,

47

A
I can see the red tail - lights head-ing for Spain. Oh and

51 *mf*

S
God it looks

A
I can see Da - niel wa - ving good-bye. God it looks

Blues Rock (♩. = 82)

I Guess That's Why They Call It The Blues

65

S eyes. _____ Time on__ my *f*

A eyes. _____ Time on__ my *f*

T *f* And I guess that's why they call it__ the blues Time on__ my

B *f*

And I guess that's why they call it__ the blues Time on__ my

68

S hands _____

A hands _____

T hands could be time spend with you Laugh-ing__ like chil - d'ren, li - ving like

B

hands could be time spend with you Laugh-ing__ like chil - d'ren, li - ving like

77

S
Laugh-ing like chil-d'ren li-ving like lo - vers and I

A
Laugh-ing like chil-d'ren li-ving like lo - vers and I

T
8
guess that's why they call it ___ the blues and I

B
2
guess that's why they call it ___ the blues and I

80

S
guess that's why they call it ___ the blues _____

A
2
guess that's why they call it ___ the blues _____

T
8
guess that's why they call it ___ the blues _____

B
2
guess that's why they call it ___ the blues _____

99

S
seems to me_ you lived your life_ like a can - dle in_ the wind_ Ne-ver

A
mf can - dle in_ the wind_

T
mf can - dle in_ the wind_

B
seems to me_ you lived your life_ like a can - dle in_ the wind_ Ne-ver

103

S
know-ing who to cling_ to when the rain_ set in._ And I would

A
ah_ when the rain_ set in._

T
ah_ when the rain_ set in._

B
know-ing who to cling_ to when the rain_ set in._ And I would

118 *f* **2**

S oo yeah! —

A oo yeah! —

T *f* I re-mem - ber when rock was young

B *f* I re-mem - ber when rock was young

124

T — me and Su - zie had so much fun — Hol - ding hands

B — me and Su - zie had so much fun — Hol - ding hands

127

T — and skim - ming stones — Had an old — gold che - vy and a

B — and skim - ming stones — Had an old — gold che - vy and a

136

S
Clock we were hop - ping and bop - ping to the Cro-co-dile Rock well

A
Clock we were hop - ping and bop - ping to the Cro-co-dile Rock well

T
8
Clock we were hop - ping and bop - ping to the Cro-co-dile Rock well

B
Clock we were hop - ping and bop - ping to the Cro-co-dile Rock well

139

S
Cro-co-dile Rock - ing is some - thing shock - ing when ah

A
Cro-co-dile Rock - ing is some - thing shock - ing when your feet just can't keep

T
8
Cro-co-dile Rock - ing is some - thing shock - ing when your feet just can't keep

B
Cro-co-dile Rock - ing is some - thing shock - ing when your feet just can't keep

148

S
Fri - day nights

A
Fri - day nights when Su - zie wore her dres - ses tight _____

T
8
Fri - day nights when Su - zie wore her dres - ses tight _____

B
Fri - day nights when Su - zie wore her dres - ses tight _____

151

S
Cro - co - dile Rock - ing was out _____ of sight _____

A
Cro - co - dile Rock - ing was out _____ of sight _____

T
8
Cro - co - dile Rock - ing was out _____ of sight _____

B
of sight _____

Very Broadly (♩ = 72)

Don't Let The Sun Go Down On Me

165

S
ah...

A
Don't let the sun _____ go down on me _____

T
(normal)
ah...

B
(normal)
ah _____ don't let the

167

S

A
Al-though I search my - self it's al-ways some-one else I see _____

T

B
sun _____ ah...

175

S me Ah! Lo - sing ev' - ry - thing is like the sun go - ing down

A me Ah! Lo - sing ev' - ry - thing is like the sun go - ing down on

T me Ah! is like the sun go - ing down on

B me Ah! is like the sun go - ing down on

A Bit Slower
Your Song
mp

179

S I hope you don't mind I hope you don't mind that I put down in

A me

T me

B me

186

S *mf*
that I put down in words how won - der - full life is ___ while

A *mf*
that I put down in words how won - der - full life is ___ while

T *mf*
that I put down in words how won - der - full life is ___ while

B *mf*
that I put down in words how won - der - full life is ___ while

189

S *f* *rall.*
you're in ___ the world _____

A *f*
you're in ___ the world _____

T *f*
you're in ___ the world _____

B *f*
you're in ___ the world _____

Elton John - Medley

(Can You Feel The Love Tonight - Your Song - Daniel - Candle In The Wind - Crocodile Rock - Don't Let The Sun Go Down On Me)

Copyrights: see full score
Arranged by Dirk Kokx

Ballad (♩ = 66)

Can You Feel The Love Tonight

Musical notation for the first part of 'Can You Feel The Love Tonight'. It features a treble clef, a key signature of three sharps (F#, C#, G#), and a 4/4 time signature. The melody consists of eighth and quarter notes with slurs. A dynamic marking of *mf* is present.

mf
Your Song

Musical notation for the first part of 'Your Song'. It features a treble clef, a key signature of three sharps, and a 4/4 time signature. The notation includes rests and a dynamic marking of *mf*.Musical notation for the second part of 'Your Song'. It features a treble clef, a key signature of three sharps, and a 4/4 time signature. The notation includes rests and a dynamic marking of *mf*.Musical notation for the third part of 'Your Song'. It features a treble clef, a key signature of three sharps, and a 4/4 time signature. The notation includes rests and a dynamic marking of *p*.

Andante (♩ = 132)

Daniel

Musical notation for the first part of 'Daniel'. It features a treble clef, a key signature of three sharps, and a 2/4 time signature. The notation includes rests and a dynamic marking of *p*.

Blues Rock (♩ = 82)

I Guess That's Why They Call It The Blues

Musical notation for the first part of 'I Guess That's Why They Call It The Blues'. It features a treble clef, a key signature of three sharps, and a 12/8 time signature. The notation includes rests and a dynamic marking of *mf*.Musical notation for the second part of 'I Guess That's Why They Call It The Blues'. It features a treble clef, a key signature of three sharps, and a 4/4 time signature. The notation includes rests and a dynamic marking of *mf*.

Not too slow (♩ = 126)

Candle In The Wind

Musical notation for the first part of 'Candle In The Wind'. It features a treble clef, a key signature of three sharps, and a 4/4 time signature. The notation includes rests and a dynamic marking of *mf*.Musical notation for the second part of 'Candle In The Wind'. It features a treble clef, a key signature of three sharps, and a 4/4 time signature. The notation includes rests and a dynamic marking of *mf*.

Elton John - Medley

(Can You Feel The Love Tonight - Your Song - Daniel - Candle In The Wind -
Crocodile Rock - Don't Let The Sun Go Down On Me)

Copyrights: see full score
Arranged by Dirk Kokx

Ballad (♩ = 66)

Can You Feel The Love Tonight

Musical notation for the first part of the medley, starting with a treble clef and a key signature of three sharps (F#, C#, G#). The tempo is marked as Ballad (♩ = 66). The first staff shows the beginning of the piece with a mezzo-forte (mf) dynamic. The melody is written in a 4/4 time signature.

Your Song

Musical notation for the second part of the medley, 'Your Song'. It begins with a treble clef and a key signature of three sharps. The tempo is marked as 7. The notation includes rests and a 7-measure phrase. The time signature changes to 2/4, then 4/4, then 3/4, then 4/4, and finally 2/4.

Musical notation for the third part of the medley, 'Daniel'. It begins with a treble clef and a key signature of three sharps. The tempo is marked as mf. The notation includes rests and a 22-measure phrase. The time signature is 4/4.

Musical notation for the fourth part of the medley, 'Candle In The Wind'. It begins with a treble clef and a key signature of three sharps. The notation includes rests and a 26-measure phrase. The time signature changes from 4/4 to 2/4, then back to 4/4. The dynamic is marked as p (piano).

Musical notation for the fifth part of the medley, 'Crocodile Rock'. It begins with a treble clef and a key signature of three sharps. The notation includes rests and a 30-measure phrase. The time signature changes from 4/4 to 2/4, then back to 4/4. The dynamic is marked as p.

Andante (♩ = 132)

Daniel

Musical notation for the sixth part of the medley, 'Daniel'. It begins with a treble clef and a key signature of three sharps. The tempo is marked as Andante (♩ = 132). The notation includes rests and a 35-measure phrase. The time signature changes from 4/4 to 2/4, then back to 4/4, and finally to 12/8.

Blues Rock (♩ = 82)

I Guess That's Why They Call It The Blues

Musical notation for the seventh part of the medley, 'I Guess That's Why They Call It The Blues'. It begins with a treble clef and a key signature of three sharps. The tempo is marked as Blues Rock (♩ = 82). The notation includes rests and a 65-measure phrase. The time signature changes from 12/8 to 4/4. The dynamic is marked as mf.

Musical notation for the eighth part of the medley, 'Don't Let The Sun Go Down On Me'. It begins with a treble clef and a key signature of three sharps. The notation includes rests and a 70-measure phrase. The time signature changes from 4/4 to 2/4, then back to 4/4, and finally to 5/4.

Not too slow (♩ = 126)

Candle In The Wind

Musical notation for the ninth part of the medley, 'Candle In The Wind'. It begins with a treble clef and a key signature of three sharps. The tempo is marked as Not too slow (♩ = 126). The notation includes rests and an 83-measure phrase. The time signature is 4/4. The dynamic is marked as mf.

Elton John - Medley

(Can You Feel The Love Tonight - Your Song - Daniel - Candle In The Wind - Crocodile Rock - Don't Let The Sun Go Down On Me)

Copyrights: see full score
Arranged by Dirk Kokx

Ballad (♩ = 66)

Can You Feel The Love Tonight

Musical notation for the first staff of 'Can You Feel The Love Tonight'. It features a treble clef, a key signature of three flats (B-flat, E-flat, A-flat), and a 4/4 time signature. The melody begins with a half note G4, followed by quarter notes A4, B4, and C5. The dynamic marking is *mf*.

Your Song

Musical notation for the second staff of 'Your Song'. It consists of a single line of music with rests and bar lines. Above the staff, the numbers 7, 3, and 4 are placed above specific measures. The dynamic marking is *mf*.

Musical notation for the third staff of 'Your Song'. It continues the melody with quarter and eighth notes. The dynamic marking is *mf*.

Musical notation for the fourth staff of 'Your Song'. It continues the melody with quarter and eighth notes. The dynamic marking is *p*.

Andante (♩ = 132)

Daniel

Musical notation for the fifth staff of 'Daniel'. It consists of a single line of music with rests and bar lines. Above the staff, the numbers 2, 7, 15, and 7 are placed above specific measures. The dynamic marking is *mf*.

Blues Rock (♩ = 82)

I Guess That's Why They Call It The Blues

Musical notation for the sixth staff of 'I Guess That's Why They Call It The Blues'. It features a treble clef, a key signature of three sharps (F#, C#, G#), and a 12/8 time signature. The melody begins with a half note G4. The dynamic marking is *mf*.

Musical notation for the seventh staff of 'I Guess That's Why They Call It The Blues'. It continues the melody with quarter and eighth notes. The dynamic marking is *mf*.

Not too slow (♩ = 126)

Candle In The Wind

Musical notation for the eighth staff of 'Candle In The Wind'. It consists of a single line of music with rests and bar lines. Above the staff, the number 24 is placed above a specific measure. The dynamic marking is *mf*.

Musical notation for the ninth staff of 'Candle In The Wind'. It continues the melody with quarter and eighth notes. The dynamic marking is *mf*.

Elton John - Medley

(Can You Feel The Love Tonight - Your Song - Daniel - Candle In The Wind -
Crocodile Rock - Don't Let The Sun Go Down On Me)

*Copyrights: see full score
Arranged by Dirk Kokx*

Ballad (♩ = 66)

Can You Feel The Love Tonight

B F#/a# E/g# B E B/d# F#/a# B C#m B/d#

Musical notation for the first system of 'Can You Feel The Love Tonight'. It features a grand staff with treble and bass clefs. The key signature is three sharps (F#, C#, G#) and the time signature is 4/4. The music starts with a mezzo-forte (mf) dynamic. The melody is in the treble clef, and the bass line is in the bass clef. The notes are: B4, F#4, A4, G#4, B4, E5, B4, D#4, F#4, A4, B4, C#4, B4, D#4.

Your Song

E A Maj7 B/d# G#m C#m /b

Musical notation for the second system of 'Your Song'. It features a grand staff with treble and bass clefs. The key signature is three sharps (F#, C#, G#) and the time signature is 4/4. The music starts with a mezzo-forte (mf) dynamic. The melody is in the treble clef, and the bass line is in the bass clef. The notes are: E4, A4, Maj7, B4, D#4, G#4, m, C#4, m, /b.

/a# A E/b B G#/b# C#m

Musical notation for the third system of 'Your Song'. It features a grand staff with treble and bass clefs. The key signature is three sharps (F#, C#, G#) and the time signature is 4/4. The music starts with a mezzo-forte (mf) dynamic. The melody is in the treble clef, and the bass line is in the bass clef. The notes are: /a#, A, E/b, B, G#/b#, C#m.

E F#m7 A B B sus4 B

Musical notation for the fourth system of 'Your Song'. It features a grand staff with treble and bass clefs. The key signature is three sharps (F#, C#, G#) and the time signature is 4/4. The music starts with a mezzo-forte (mf) dynamic. The melody is in the treble clef, and the bass line is in the bass clef. The notes are: E, F#m7, A, B, B sus4, B.

29 Amaj7 E/g# A A

32 B B_{sus4} B E A/e B/e A/e

Andante (♩ = 132)

(con Ped.)

Daniel

35 E B⁷/_a A E/b B

41 E A/b E F#m E/f# F#m B

49 G# C#m B A B C#m

Elton John - Medley 5
13 Piano Combo Advanced

77 D D/e A E F#m C#m

80 D D/e A C#m A/c# C#m D B7

Not too slow (♩ = 126)

Candle In The Wind

83 E E sus4 E A A add2 E/g# E sus4 E

89 A A sus4 A E E add2 E A

95 E/g# E sus4 A A add2 A B B7

Elton John - Medley 7
13 Piano Combo Advanced

129 D G/d D G C/g G Bm

134 C/b Bm C F/c C F/c C D G/d D

139 Em D Em D Em D Em A G^{add2}/a D/a A D

144 G/d D G Em

149 A D G/d C/d G/d D F/c C F/c

A Bit Slower
Your Song

178 F#m E/g# F#m/a A/b B#o7 C#m C#m/b /a#

181 Amaj7(6) E/g# A A

184 B Bsus4 B C#m C#m/b /a#

187 Amaj7(6) E/g# A A

190 E A/e B/e A E/g# F#m7 E

Elton John - Medley

(Can You Feel The Love Tonight - Your Song - Daniel - Candle In The Wind -
Crocodile Rock - Don't Let The Sun Go Down On Me)

Copyrights: see full score
Arranged by Dirk Kokx

Ballad (♩ = 66)

Can You Feel The Love Tonight

B F#/a# E/g# B E B/d# F#/a# B C#m B/d#

mf

Detailed description: This block contains the first system of musical notation for 'Can You Feel The Love Tonight'. It features a grand staff with treble and bass clefs. The key signature is three sharps (F#, C#, G#) and the time signature is 4/4. The music is marked 'mf'. Above the staff, a series of chords are indicated: B, F#/a#, E/g#, B, E, B/d#, F#/a#, B, C#m, and B/d#. The notation includes eighth and sixteenth notes in the right hand and quarter notes in the left hand.

Your Song

E AMaj7 B/d# G#m C#m /b

5

Detailed description: This block contains the second system of musical notation for 'Your Song', starting at measure 5. It features a grand staff with treble and bass clefs. The key signature is three sharps (F#, C#, G#) and the time signature is 4/4. Above the staff, a series of chords are indicated: E, AMaj7, B/d#, G#m, C#m, and /b. The notation includes eighth and sixteenth notes in the right hand and quarter notes in the left hand.

/a# A E/b B G#/b# C#m

8

Detailed description: This block contains the third system of musical notation for 'Your Song', starting at measure 8. It features a grand staff with treble and bass clefs. The key signature is three sharps (F#, C#, G#) and the time signature is 4/4. Above the staff, a series of chords are indicated: /a#, A, E/b, B, G#/b#, and C#m. The notation includes eighth and sixteenth notes in the right hand and quarter notes in the left hand.

E F#m7 A B B sus4 B

11

Detailed description: This block contains the fourth system of musical notation for 'Your Song', starting at measure 11. It features a grand staff with treble and bass clefs. The key signature is three sharps (F#, C#, G#) and the time signature is 4/4. Above the staff, a series of chords are indicated: E, F#m7, A, B, B sus4, and B. The notation includes eighth and sixteenth notes in the right hand and quarter notes in the left hand.

29 Amaj7 E/g# A A

32 B B_{sus4} B E A/e B/e A/e

Andante (♩ = 132)

(con Ped.)

Daniel

35 E B⁷/_a A E/b B

41 E A/b E F#m E/f# F#m B

49 G# C#m B A B C#m

77

D D/e A E F#m C#m

80

D D/e A C#m A/c# C#m D B7

Not too slow (♩ = 126)

Candle In The Wind

83

E E sus4 E A A add2 E/g# E sus4 E

89

A A sus4 A E E add2 E A

95

E/g# E sus4 A A add2 A B B7

129 D G/d D G C/g G Bm

134 C/b Bm C F/c C F/c C D G/d D

139 Em D Em D Em D Em A G^{add2}/a D/a A D

144 G/d D G Em

149 A D G/d C/d G/d D F/c C F/c

A Bit Slower
Your Song

178 F#m E/g# F#m/a A/b B#o7 C#m C#m/b /a#

181 Amaj7(6) E/g# A A

184 B Bsus4 B C#m C#m/b /a#

187 Amaj7(6) E/g# A A

190 E A/e B/e A E/g# F#m7 E

15 Piano Solo Moderated



Elton John - Medley

(Can You Feel The Love Tonight - Your Song - Daniel - Candle In The Wind - Crocodile Rock - Don't Let The Sun Go Down On Me)

Copyrights: see full score
Arranged by Dirk Kokx

Ballad (♩ = 66)

Can You Feel The Love Tonight

B F#/a# E/g# B E B/d# F#/a# B C#m B/d#

Musical notation for the first system of 'Can You Feel The Love Tonight'. It consists of a grand staff with treble and bass clefs. The key signature has three sharps (F#, C#, G#) and the time signature is 4/4. The melody is in the treble clef, and the accompaniment is in the bass clef. The notes are: Treble: B4, F#4, E4, B4, E4, B4, F#4, B4, C#4, B4. Bass: B2, F#2, E2, B2, E2, B2, F#2, B2, C#2, B2.

Your Song

E A Maj7 B/d# G#m C#m /b

5

Musical notation for the second system of 'Your Song', measures 5-7. Treble clef: E4, A4, G#4, F#4, E4, D4, C4. Bass clef: E2, A2, G#2, F#2, E2, D2, C2.

/a# A E/b B G#/b# C#m

8

Musical notation for the third system of 'Your Song', measures 8-10. Treble clef: A4, G#4, F#4, E4, D4, C4, B3, A3, G#3, F#3, E3, D3, C3. Bass clef: A2, G#2, F#2, E2, D2, C2, B1, A1, G#1, F#1, E1, D1, C1.

E F#m7 A B B sus4 B

11

Musical notation for the fourth system of 'Your Song', measures 11-13. Treble clef: E4, F#4, A4, B4, B4, B4. Bass clef: E2, F#2, A2, B2, B2, B2. Time signature changes from 4/4 to 2/4 at measure 11 and back to 4/4 at measure 13.

Elton John - Medley 3
15 Piano Solo Moderated

29 Amaj7 E/g# A A

32 B B_{sus4} B E A/e B/e A/e

(con Ped.)

Andante (♩ = 132)
Daniel

35 E B7/a A E/b B

41 E A/b E F#m E/f# F#m B

49 G# C#m B A B C#m

Elton John - Medley 5
15 Piano Solo Moderated

77 D D/e A E F#m C#m

80 D D/e A C#m A/c# C#m D B7

Not too slow (♩ = 126)

Candle In The Wind

83 E E sus4 E A A add2 E/g# E sus4 E

89 A A sus4 A E E add2 E A

95 E/g# E sus4 A A add2 A B B7

Elton John - Medley 7
15 Piano Solo Moderated

129 D G/d D G C/g G Bm

134 C/b Bm C F/c C F/c C D G/d D

139 Em D Em D Em D Em A G^{add2}/a D/a A D

144 G/d D G Em

149 A D G/d C/d G/d D F/c C F/c

A Bit Slower
Your Song

178 F#m E/g# F#m/a A/b B#°7 C#m C#m/b /a#

181 Amaj7(6) E/g# A A

mf

184 B B sus4 B C#m C#m/b /a#

187 Amaj7(6) E/g# A A

cresc.

190 E A/e B/e A E/g# F#m7 E

rall.

(con Ped.)

Elton John - Medley

(Can You Feel The Love Tonight - Your Song - Daniel - Candle In The Wind -
Crocodile Rock - Don't Let The Sun Go Down On Me)

Copyrights: see full score
Arranged by Dirk Kokx

Ballad (♩ = 66)

Can You Feel The Love Tonight

B F#/a# E/g# B E B/d# F#/a# B C#m B/d#

Musical notation for the first system of 'Can You Feel The Love Tonight'. It consists of a grand staff with treble and bass clefs. The key signature has three sharps (F#, C#, G#) and the time signature is 4/4. The melody is in the treble clef, and the accompaniment is in the bass clef. Chords are indicated above the staff.

Your Song

E A Maj7 B/d# G#m C#m /b

5

Musical notation for the second system of 'Your Song', measures 5-7. It consists of a grand staff with treble and bass clefs. The key signature has three sharps (F#, C#, G#) and the time signature is 4/4. The melody is in the treble clef, and the accompaniment is in the bass clef. Chords are indicated above the staff.

/a# A E/b B G#/b# C#m

8

Musical notation for the third system of 'Your Song', measures 8-10. It consists of a grand staff with treble and bass clefs. The key signature has three sharps (F#, C#, G#) and the time signature is 4/4. The melody is in the treble clef, and the accompaniment is in the bass clef. Chords are indicated above the staff.

E F#m7 A B B sus4 B

11

Musical notation for the fourth system of 'Your Song', measures 11-13. It consists of a grand staff with treble and bass clefs. The key signature has three sharps (F#, C#, G#) and the time signature is 4/4. The melody is in the treble clef, and the accompaniment is in the bass clef. Chords are indicated above the staff.

Elton John - Medley 3
16 Piano Combo Moderated

29 Amaj7 E/g# A A

32 B B_{sus4} B E A/e B/e A/e

(con Ped.)

Andante (♩ = 132)
Daniel

35 E B7/a A E/b B

41 E A/b E F#m E/f# F#m B

49 G# C#m B A B C#m

Elton John - Medley 5
16 Piano Combo Moderated

77 D D/e A E F#m C#m

80 D D/e A C#m A/c# C#m D B7

Not too slow (♩ = 126)

Candle In The Wind

83 E E sus4 E A A add2 E/g# E sus4 E

89 A A sus4 A E E add2 E A

95 E/g# E sus4 A A add2 A B B7

Elton John - Medley 7
16 Piano Combo Moderated

129 D G/d D G C/g G Bm

134 C/b Bm C F/c C F/c C D G/d D

139 Em D Em D Em D Em A G^{add2}/a D/a A D

144 G/d D G Em

149 A D G/d C/d G/d D F/c C F/c

A Bit Slower
Your Song

178 F#m E/g# F#m/a A/b B#°7 C#m C#m/b /a#

181 Amaj7(6) E/g# A A

mf

184 B B sus4 B C#m C#m/b /a#

187 Amaj7(6) E/g# A A

cresc.

190 E A/e B/e A E/g# F#m7 E

rall.

(con Ped.)

Elton John - Medley

(Can You Feel The Love Tonight - Your Song - Daniel - Candle In The Wind -
Crocodile Rock - Don't Let The Sun Go Down On Me)

Copyrights: see full score
Arranged by Dirk Kokx

Ballad (♩ = 66)

Can You Feel The Love Tonight

Your Song

Musical score for the first system. It features two staves: a treble clef staff for the melody and a bass clef staff for accompaniment. The key signature is three sharps (F#, C#, G#) and the time signature is 4/4. The melody starts with a piano (*p*) dynamic and is marked 'Strings (programmed octaves)'. The accompaniment starts with a mezzo-forte (*mf*) dynamic. The system includes a section labeled 'Your Song' with a 7-measure rest in both staves.

Musical score for the second system, starting at measure 13. The instruction '(let melody come out)' is written above the staff. The melody begins with a mezzo-piano (*mp*) dynamic. The accompaniment consists of chords and moving lines in the bass clef.

Musical score for the third system, starting at measure 20. The melody continues with various note values and rests. The accompaniment features chords and moving lines in the bass clef.

Musical score for the fourth system, starting at measure 26. The melody continues with various note values and rests. The accompaniment features chords and moving lines in the bass clef.

Crocodile Rock

115 Saw Wave (GM 82)

Musical staff 115-119, treble clef, key signature of one sharp (F#). It features a rhythmic pattern of chords with a sawtooth-like waveform. The first measure is marked with a forte *f* dynamic.

Musical staff 120-124, treble clef, key signature of one sharp (F#). It continues the rhythmic pattern. The dynamic is marked as mezzo-forte *mf*.

Musical staff 125-129, treble clef, key signature of one sharp (F#). It continues the rhythmic pattern.

Musical staff 130-134, treble clef, key signature of one sharp (F#). It continues the rhythmic pattern.

Musical staff 135-148, treble clef, key signature of one sharp (F#). It continues the rhythmic pattern and ends with a double bar line and a repeat sign. A measure rest of 10 measures is indicated.

Musical staff 149-159, treble clef, key signature of one sharp (F#). It features a string section with a four-measure rest followed by a melodic line. The dynamic is marked as forte *f*.

Very Broadly (♩ = 72)

Don't Let The Sun Go Down On Me

Musical staff 160-164, grand staff (treble and bass clefs), key signature of one sharp (F#). It features a piano introduction with two first endings. The first ending is marked with a first ending bracket and a repeat sign. The second ending is marked with a second ending bracket and a repeat sign, followed by the instruction *rall.* (rallentando).

Elton John - Medley

(Can You Feel The Love Tonight - Your Song - Daniel - Candle In The Wind - Crocodile Rock - Don't Let The Sun Go Down On Me)

Copyrights: see full score
Arranged by Dirk Kokx

Ballad (♩ = 66)

Can You Feel The Love Tonight Your Song

E A^{Maj7} B/^{d#} G^{#m} C^{#m} /^b

8 

/^{a#} A E/^b B G^{#/b#} C^{#m} E F^{#m7}

8 

A B B^{sus4} B E A^{Maj7} B/^{d#} G^{#m}

12 

C^{#m} /^b /^{a#} A E/^b B G^{#/b#} C^{#m} B/^{d#}

16 

E F^{#m7} A E E^{sus4} E B/^{d#} C^{#m}

20 

F^{#m7} A B/^{d#} C^{#m} F^{#m7} A C^{#m} C^{#m/b} /^{a#}

24 

A^{maj7} E/^{g#} A A B B^{sus4} B E A/^e

29 

Elton John - Medley

(Can You Feel The Love Tonight - Your Song - Daniel - Candle In The Wind - Crocodile Rock - Don't Let The Sun Go Down On Me)

Copyrights: see full score
Arranged by Dirk Kokx

Ballad (♩ = 66)

Can You Feel The Love Tonight

Your Song

B F#/a# E/g# B E B/d# F#/a# B C#m B/d# E AMaj7

mf *p*

6 B/d# G#m C#m /b /a# A E/b B G#/b# C#m

11 E F#m7 A B B_{sus4} B E AMaj7 B/d# G#m

mf

16 C#m /b /a# A E/b B G#/b# C#m B/d# E F#m7

21 A E E_{sus4} E B/d# C#m F#m7 A B/d# C#m

26 F#m7 A C#m C#m/b /a# Amaj7 E/g# A

31 A B B_{sus4} B E A/e B/e A/e

77 D D/e A E F#m C#m

Measures 77-79: Bass line in D major. Measure 77: D, D, E, F#, G, A, B, C. Measure 78: D, D, E, F#, G, A, B, C. Measure 79: D, D, E, F#, G, A, B, C.

80 D D/e A C#m A/C# C#m D B7

Measures 80-82: Bass line in D major. Measure 80: D, D, E, F#, G, A, B, C. Measure 81: D, D, E, F#, G, A, B, C. Measure 82: D, D, E, F#, G, A, B, C.

Not too slow (♩ = 126)
Candle In The Wind

83 E E sus4 E A A add2 E/g# E sus4 E

Measures 83-88: Bass line in E major, 4/4 time. Measure 83: E, E, E, A, A, E/g#, E, E. Measure 84: E, E, E, A, A, E/g#, E, E. Measure 85: E, E, E, A, A, E/g#, E, E. Measure 86: E, E, E, A, A, E/g#, E, E. Measure 87: E, E, E, A, A, E/g#, E, E. Measure 88: E, E, E, A, A, E/g#, E, E.

89 A A sus4 A E E add2 E A

Measures 89-94: Bass line in E major, 4/4 time. Measure 89: A, A, A, E, E, E add2, E, A. Measure 90: A, A, A, E, E, E add2, E, A. Measure 91: A, A, A, E, E, E add2, E, A. Measure 92: A, A, A, E, E, E add2, E, A. Measure 93: A, A, A, E, E, E add2, E, A. Measure 94: A, A, A, E, E, E add2, E, A.

95 E/g# E sus4 A A add2 A B B7

Measures 95-100: Bass line in E major, 4/4 time. Measure 95: E/g#, E, A, A, A, B, B. Measure 96: E/g#, E, A, A, A, B, B. Measure 97: E/g#, E, A, A, A, B, B. Measure 98: E/g#, E, A, A, A, B, B. Measure 99: E/g#, E, A, A, A, B, B. Measure 100: E/g#, E, A, A, A, B, B.

101 E A E E A/e E B

Measures 101-106: Bass line in E major, 4/4 time. Measure 101: E, A, E, E, A/e, E, B. Measure 102: E, A, E, E, A/e, E, B. Measure 103: E, A, E, E, A/e, E, B. Measure 104: E, A, E, E, A/e, E, B. Measure 105: E, A, E, E, A/e, E, B. Measure 106: E, A, E, E, A/e, E, B.

107 A A add2 C#m B A

Measures 107-112: Bass line in E major, 4/4 time. Measure 107: A, A, C#m, B, A. Measure 108: A, A, C#m, B, A. Measure 109: A, A, C#m, B, A. Measure 110: A, A, C#m, B, A. Measure 111: A, A, C#m, B, A. Measure 112: A, A, C#m, B, A.

Fast Rock (♩ = 142 - 146)
Crocodile Rock

113 A E/g# F#m7 E G/d D G C/g G

Measures 113-124: Bass line in E major, 4/4 time. Measure 113: A, E/g#, F#m7, E, G/d, D, G, C/g, G. Measure 114: A, E/g#, F#m7, E, G/d, D, G, C/g, G. Measure 115: A, E/g#, F#m7, E, G/d, D, G, C/g, G. Measure 116: A, E/g#, F#m7, E, G/d, D, G, C/g, G. Measure 117: A, E/g#, F#m7, E, G/d, D, G, C/g, G. Measure 118: A, E/g#, F#m7, E, G/d, D, G, C/g, G. Measure 119: A, E/g#, F#m7, E, G/d, D, G, C/g, G. Measure 120: A, E/g#, F#m7, E, G/d, D, G, C/g, G. Measure 121: A, E/g#, F#m7, E, G/d, D, G, C/g, G. Measure 122: A, E/g#, F#m7, E, G/d, D, G, C/g, G. Measure 123: A, E/g#, F#m7, E, G/d, D, G, C/g, G. Measure 124: A, E/g#, F#m7, E, G/d, D, G, C/g, G.

125 Bm C/b Bm C F/c C F/c C D G/d D

Measures 125-130: Bass line in B minor, 4/4 time. Measure 125: Bm, C/b, Bm, C, F/c, C, F/c, C, D, G/d, D. Measure 126: Bm, C/b, Bm, C, F/c, C, F/c, C, D, G/d, D. Measure 127: Bm, C/b, Bm, C, F/c, C, F/c, C, D, G/d, D. Measure 128: Bm, C/b, Bm, C, F/c, C, F/c, C, D, G/d, D. Measure 129: Bm, C/b, Bm, C, F/c, C, F/c, C, D, G/d, D. Measure 130: Bm, C/b, Bm, C, F/c, C, F/c, C, D, G/d, D.

A Bit Slower
Your Song

176 E/d A/c# F#m E/g# F#m/a A/b B#o7 C#m C#m/b p

180 /a# Amaj7(6) E/g# A A B Bsus4 B mp

185 C#m C#m/b /a# Amaj7(6) E/g# A A mp

190 E A/e B/e A E/g# F#m7 E f rall.

Detailed description: This block contains four staves of bass guitar notation. The first staff (measures 176-179) starts with a treble clef and a key signature of three sharps (F#, C#, G#). It features a melodic line with eighth and quarter notes, and a bass line with quarter notes. Chords are indicated above the staff. A dynamic marking of *p* is present. The second staff (measures 180-184) changes to a 2/4 time signature and includes a *mp* dynamic marking. The third staff (measures 185-189) continues the 2/4 time signature and also includes a *mp* dynamic marking. The fourth staff (measures 190-194) changes to a 4/4 time signature, features a *f* dynamic marking, and ends with a *rall.* marking. A large, diagonal watermark reading 'PREMIUM VERSION' is overlaid across the entire page.

Drumkit/Percussion

Hi-Hat closed
Hi-Hat open
High Tom
Mid Tom
Low Tom
Floor Tom
Ride Cymbal
Ride Bell/Cup
Crash Cymbal
Splash Cymbal
Triangle mute
Bassdrum (Kick)
Snaredrum
Hi-Hat Foot
Tambourine Beating
Triangle open

- Shaker (eggs)
- Claves
- High Timbale
- Sleigh Bells
- Bell Tree
- Maracas
- Wind Chimes

Handclap
Guro
Woodblock High
Timbale Low
Agogo High
Cowbell
Conga Cabasa
Woodblock Low
Agogo Low

Elton John - Medley

(Can You Feel The Love Tonight - Your Song - Daniel - Candle In The Wind -
Crocodile Rock - Don't Let The Sun Go Down On Me)

Copyrights: see full score
Arranged by Dirk Kokx

Ballad (♩ = 66)

Can You Feel The Love Tonight

Your Song

13

p

18

mf

23

continue same style

27

Cymbal (timp sticks)

Barchimes

(sticks)

Andante (♩ = 132)

Daniel

33

39

continue same style

Drumkit/Percussion

Hi-Hat closed
Hi-Hat open
High Tom
Mid Tom
Low Tom
Ride Cymbal
Crash Cymbal
Triangle mute
Shareclick
Hi-Hat Foot
Bassdrum (Kick)
Snaredrum
Tambourine Beating
Triangle open

- Shaker (eggs)
- Claves
- High Timbale
- Sleigh Bells
- Bell Tree
- Maracas
- Wind Chimes

Handclap
Guro
Woodblock High
Timbale Low
Agogo High
Cowbell
Conga Cabasa
Woodblock Low
Agogo Low

Elton John - Medley

(Can You Feel The Love Tonight - Your Song - Daniel - Candle In The Wind - Crocodile Rock - Don't Let The Sun Go Down On Me)

Copyrights: see full score
Arranged by Dirk Kokx

Ballad (♩ = 66)

Can You Feel The Love Tonight Your Song

4 7 3 4

Barchimes

21

2 3 2 2

Andante (♩ = 132)

Daniel

34

Shaker

Barchimes

43

53

rit.

Blues Rock (♩ = 82)

I Guess That's Why They Call It The Blues

64

Conga's

p < f

68

72

Elton John - Medley

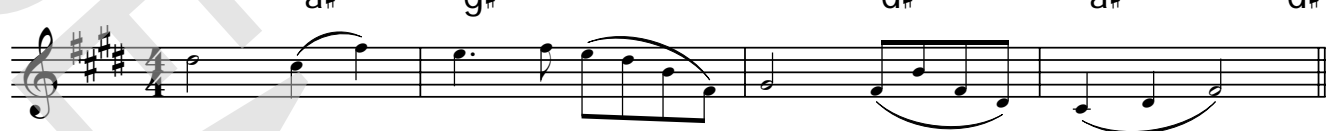
(Can You Feel The Love Tonight - Your Song - Daniel - Candle In The Wind -
Crocodile Rock - Don't Let The Sun Go Down On Me)

Copyrights: see full score
Arranged by Dirk Kokx

Ballad (♩ = 66)

Can You Feel The Love Tonight

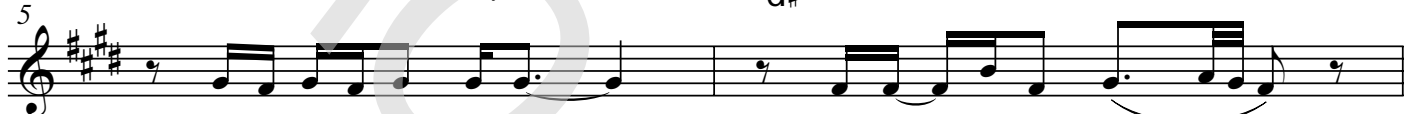
B F[♯]/a[♯] E/g[♯] B E B/d[♯] F[♯]/a[♯] B C[♯]m B/d[♯]



Your Song

E A^{Maj7} B/d[♯] G[♯]m

5



It's a lit - tle bit fun - ny _____ this feel - ing in - side _____

C[♯]m /b /a[♯] A


7



I'm not one of those who can ea - si - ly hide. _____

E/b B G[♯]/b[♯] C[♯]m

9



I don't have much mo - ney _____ but boy if _____ I did, _____

E F[♯]m7 A B B_{sus4} B

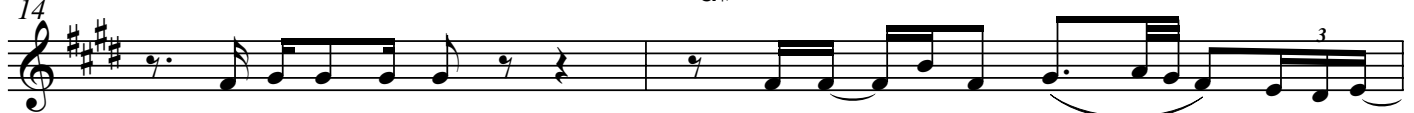
11



I'd buy a big house where _____ we both could live.

E A^{Maj7} B/d[♯] G[♯]m

14



I sat on the roof and kicked of the moss _____ Well a few

32

B B_{sus4}B E A/e B/e A/e

Andante (♩ = 132)
Daniel

35

E B7/aA E/b B E A/b

43

E F#m E/f# F#m B

Da-niel is tra - v'ling to-night on a plane, I can see the red

48

G# C#m B A B

_ tail-lights head-ing for Spain. Oh and I can see Da - niel wa - ving good-bye.

53

C#m A B

God it looks like Da - niel. Must be the clouds

58

A/b E A

in my eyes. Oh God, it looks like Da - niel

62

B A/b rit.

Must be the clouds in my

86 A^{add2} $E/g\#$ E^{sus4} E A

you had the grace to hold your-self_ while those a - round you crawled__

90 A^{sus4} A E E^{add2} E A

They crawled out of the wood-work and they whis-pered in-to__ your brain

94 $E/g\#$ E^{sus4} A

They set you_ on the tread - mill and made you change your name__

98 A^{add2} A B B^7 E

and it seems to me_ you lived your life_ like a can - dle in__ the wind

102 A E A/e E B

_ Ne-ver know-ing who to cling__ to when the rain__ set in._

106 A A^{add2} $C\#m$

And I would__ have liked to have known__ you but I__ was just a kid__ Your

110 B A A $E/g\#$ $F\#m7$

can - dle burned out long be - fore__ your le - gend e - ver did.__

140 E_m D E_m A G^{add2}/a D/a A D




some-thing shock - ing when your feet just can't keep still _____ I ne-ver knew me a

144 G/d D G E_m



bet-ter time and I guess _____ I ne - ver will _____ Oh _____ Law-dy Ma-ma those

148 A D G/d




Fri - day nights when Su-zie wore her dres - ses tight _____ Cro - co - dile Rock-ing was

152 C/d G/d D F/c C F/c C F/c C G $/f\#$ E_m



out _____ of sight _____ La _____ la la la la la _____

158 $/d$ C $/c\#$ D C/d D D $B^7/d\#$ *rall.*



_____ la la la la la _____ la la la la la _____ la _____

Very Broadly (♩ = 72)
Don't Let The Sun Go Down On Me

165 E E^{sus4} E E/d $C\#m$



Don't let the sun _____ go down on me _____ Al-though I search my-self it's al-ways

168 $F\#/a\#$ E/b A/b B E



some-one else I see I'd just al-low a frag-ment of your life _____ to wan-der free



Elton John - Medley

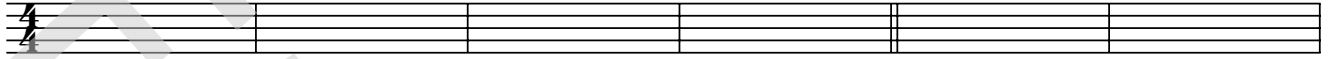
(Can You Feel The Love Tonight - Your Song - Daniel - Candle In The Wind - Crocodile Rock - Don't Let The Sun Go Down On Me)

Copyrights: see full score
Arranged by Dirk Kokx

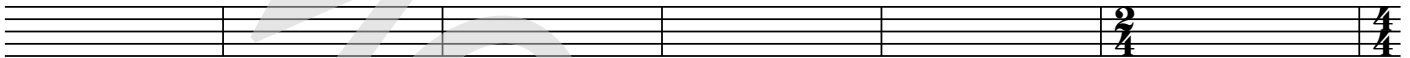
Ballad (♩ = 66)

Can You Feel The Love Tonight

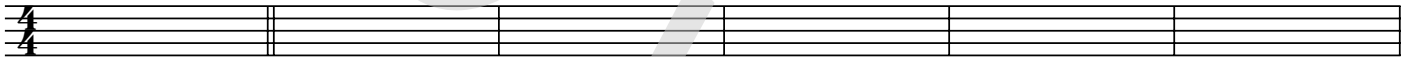
Your Song



7



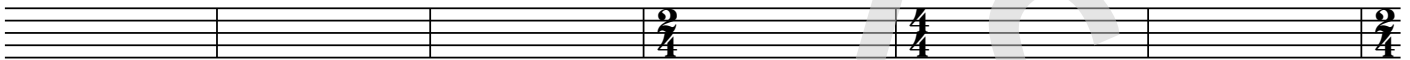
13



19

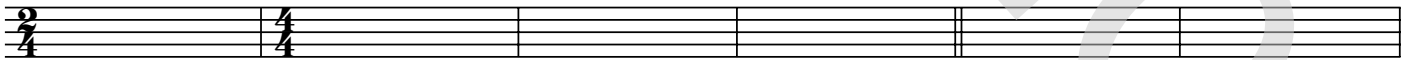


25

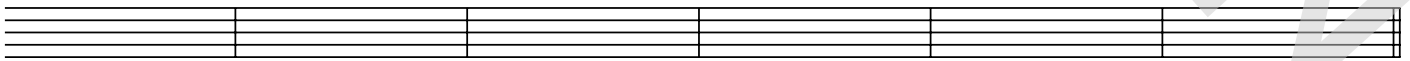


Andante (♩ = 132)
Daniel

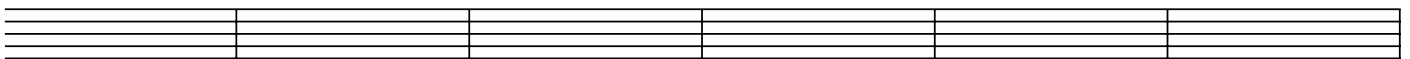
31



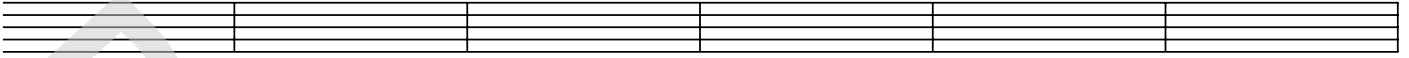
37



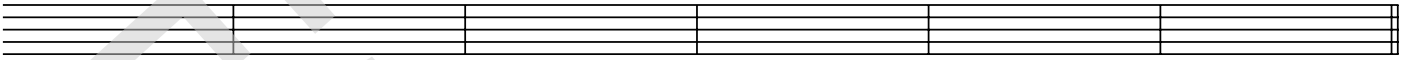
43



103

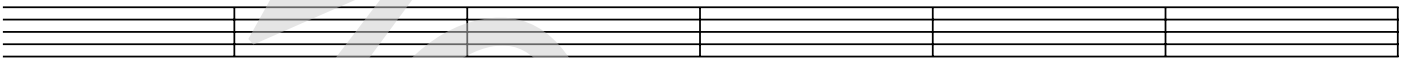


109



Fast Rock (♩ = 142 - 146)
Crocodile Rock

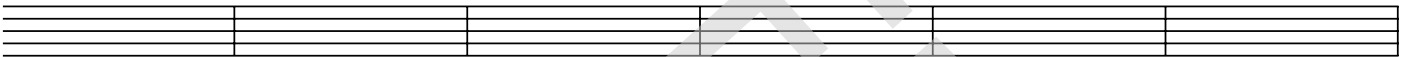
115



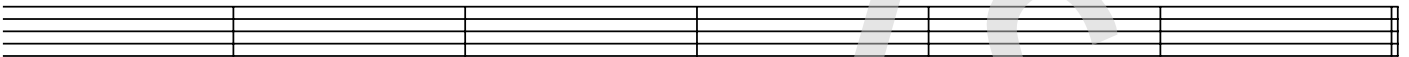
121



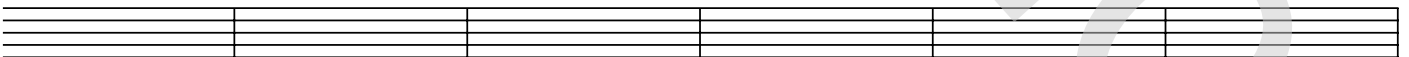
127



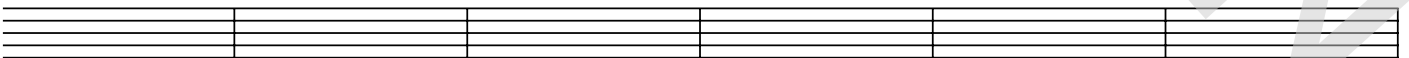
133



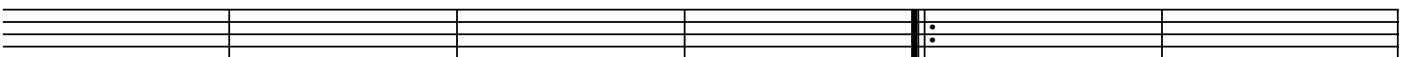
139



145



151



Elton John - Medley

(Can You Feel The Love Tonight - Your Song - Daniel - Candle In The Wind -
Crocodile Rock - Don't Let The Sun Go Down On Me)

*Copyrights: see full score
Arranged by Dirk Kokx*

Can You Feel The Love Tonight

Your Song

It's a little bit funny this feeling inside
I'm not one of those who can easily hide
I don't have much money but boy if I did
I'd buy a big house where we both could live

I sat on the roof and kicked off the moss
Well a few of the verses well they've got me quite cross
But the sun's been quite kind when I wrote this song
It's for people like you that keep it turned on

And you can tell ev'rybody this is your song
It may be quite simple but now that it's done
I hope you don't mind
I hope you don't mind that I put down in words
How wonderful life is while you're in the world

Daniel

Daniel is trav'ling tonight on a plane
I can see the red tail lights heading for Spain
Oh and I can see Daniel waving goodbye
God it looks like Daniel, must be the clouds in my eyes
Oh God it looks like Daniel, must be the clouds in my eyes

I Guess That's Why They Call It The Blues

And I guess that's why they call it the blues
Time on my hands could be time spend with you
Laughing like child'ren, living like lovers
Rolling like thunder under the covers
And I guess that's why they call it the blues
Laughing like child'ren, living like lovers
And I guess that's why they call it the blues
Laughing like child'ren, living like lovers
And I guess that's why they call it the blues

Candle In The Wind

Goodbye Norma Jean, thought I never knew you at all
You had the grace to hold yourself while those around you crawled
They crawled out of the woodwork and they whispered into your brain
They set you on the treadmill and made you change your name