



Everything SSATB

Pag.

02	Full score combo C instrument
10	Full score combo Bb instrument
18	Full score combo Eb instrument
26	Full score combo 4 extra staves
38	Full score small combo
49	Full score small combo 2 extra staves
65	Full score vocals (SSATB) piano advanced
72	Full score vocals (SSATB) piano moderated
79	Vocals (SSATB)
87	C instrument
89	Bb instrument
91	Eb instrument
93	Piano advanced
98	Piano moderated
103	Synthesizer
106	Guitar
109	Bassguitar
111	Drumkit
114	Percussion
117	Leadsheet (melody, lyrics, chords)
121	Empty paper
124	Lyrics



01 SATB Combo C

Everything

Words and Music by M. Bubl , A. Chang
Arranged by Hans Reintjes
Original Key

DEMO

DEMO

Intro $\text{♩} = 124$

Soprano
Alto
Tenor
Bass

C Instr.
D Bm7 E7 G6 D Bm7 E7 G6 D Bm7 E7 GmMaj7 G/A

Piano Adv.

Synthesizer
Warm Pad

Guitar
Ac. Guitar (steel)

Bass Guitar

Drum Set

Percussion
Shaker

© www.ChorusOnline.com / 0031 (0) 6 - 41 57 77 56

Chorus 1

22

S Cause you can see it when I look at you And in this crazy life and through these crazy times It's you it's you you make me sing

A Cause you can see it when I look at you And in this crazy life and through these crazy times It's you it's you you make me sing

T know its true. Cause you can see it when I look at you And in this crazy life and through these crazy times It's you it's you you make me sing

B know its true. Cause you can see it when I look at you And in this crazy life and through these crazy times It's you it's you you make me sing

C

P.A. E⁷ G^m G/A D G A D B^{m7} G A D D⁷ G F⁷

Synth

Gtr.

Bass

D. S.

Perc.

Interlude 1

30

S you're e-vry word you're e-vry thing

A you're e-vry word you're e-vry thing

T you're e-vry line you're e-vry thing You're a ca-

B you're e-vry line you're e-vry thing You're a ca-

C

P.A. B^m D/A E⁷/G# G^mMaj7 D B^{m7} E⁷ G^mMaj7 G/A D G/A

Synth

Gtr.

Bass

D. S.

Perc.

Chorus 2

51

S that's what our love can do — And in this cra - zy - li - fe and through these cra - zy times — It's you — it's you — you make me sing —

A that's what our love can do — And in this cra - zy - li - fe and through these cra - zy times — It's you — it's you — you make me sing —

T that's what our love can do — And in this cra - zy - li - fe and through these cra - zy times — It's you — it's you — you make me sing — you're e - vry line

B that's what our love can do — And in this cra - zy - li - fe and through these cra - zy times — It's you — it's you — you make me sing — you're e - vry line

C

P.A. G^m G/A D G A D B^{m7} G A D D⁷ G F^{#7} B^m D/A

Synth

Gtr.

Bass

D.S.

Perc.

Instr. Solo

50

S — you're e - vry word — you're e - vry - thing — you're e - vry - thing —

A — you're e - vry word — you're e - vry - thing — you're e - vry - thing —

T — you're e - vry - thing — you're e - vry - thing —

B — you're e - vry - thing — you're e - vry - thing —

C E⁷/G[#] G^mMaj⁷ D^p B^{m7} E⁷ G^m G/A D G/A D B^{m7}

P.A.

Synth

Gtr. Open for solo *ff*

Bass

D.S.

Perc.



02 SATB Combo Bb

Everything

Words and Music by M. Bubl , A. Chang
Arranged by Hans Reintjes
Original Key

DEMO

KLEIN

SUN

STAR

MUSIC

Intro $\text{♩} = 124$

Soprano

Alto

Tenor

Bass

Bb Instr.

Piano Adv.

Synthesizer

Guitar

Bass Guitar

Drum Set

Percussion

D B^{m7} E⁷ G⁶ D B^{m7} E⁷ G⁶ D B^{m7} E⁷ GmMaj7 G/A

Warm Pad

Ac. Guitar (steel)

Shaker

© www.ChorusOnline.com / 0031 (0) 6 - 41 57 77 56

Chorus 1

22

S Cause you can see it when I look at you And in this cra - - - zy li - fe and through these cra - zy times It's you - it's you - you make me sing

A Cause you can see it when I look at you And in this cra - - - zy li - fe and through these cra - zy times It's you - it's you - you make me sing

T know its true. Cause you can see it when I look at you And in this cra - - - zy li - fe and through these - - - zy times It's you - it's you - you make me sing

B know its true. Cause you can see it when I look at you And in this cra - - - zy li - fe and through these cra - zy times It's you - it's you - you make me sing

Bb

E⁷ G^m G/A D G A D B^{m7} G A D D⁷ G F⁷

P.A.

Synth

Gtr.

Bass

D.S.

Perc.

Interlude 1

30

S you're e - vry word you're e - vry - thing

A you're e - vry word you're e - vry - thing

T you're e - vry line you're e - vry - thing You're a ca -

B you're e - vry line you're e - vry - thing You're a ca -

Bb

B^m D/A E⁷/G# G^mMaj7 D B^{m7} E⁷ G^mMaj7 G/A D G/A

P.A.

Synth

Gtr.

Bass

D.S.

Perc.

Chorus 2

51

S that's what our love can do — And in this cra - zy - li - fe and through these cra - zy times — It's you — it's you — you make me sing —

A that's what our love can do — And in this cra - zy - li - fe and through these cra - zy times — It's you — it's you — you make me sing —

T that's what our love can do — And in this cra - zy - li - fe and through these cra - zy times — It's you — it's you — you make me sing — you're e - vry line

B that's what our love can do — And in this cra - zy - li - fe and through these cra - zy times — It's you — it's you — you make me sing — you're e - vry line

Bb

P.A. G^m G/A D G A D B^{m7} G A D D⁷ G F#⁷ B^m D/A

Synth

Gtr.

Bass

D.S.

Perc.

Instr. Solo

50

S — you're e - vry word — you're e - vry - thing — you're e - vry - thing —

A — you're e - vry word — you're e - vry - thing — you're e - vry - thing —

T — you're e - vry - thing — you're e - vry - thing —

B — you're e - vry - thing — you're e - vry - thing —

Bb E⁷/G# G^mMaj7 D^p B^{m7} E⁷ G^m G/A D G/A D B^{m7}

P.A.

Synth

Gtr. Open for solo *ff*

Bass

D.S.

Perc.

80

S
— It's you — it's you — you make me sing — you're e - vry word — you're e - vry - thing —

A
— It's you — it's you — you make me sing — you're e - vry word — you're e - vry - thing —

T
— It's you — it's you — you make me sing — you're e - vry line — you're e - vry - thing —

B
— It's you — it's you — you make me sing — you're e - vry line — you're e - vry - thing —

Bb

P.A.
E E7 A G#7 C#m E/B F#7/A# AmMaj7 C#m C#m7/B

Synth

Gtr.

Bass

D. S.

Perc.

87

S
you're e - vry song. cause you're my e - vry - thing

A
you're e - vry song. cause you're my e - vry - thing

T
and I sing a - long, cause you're my e - vry - thing

B
and I sing a - long, cause you're my e - vry - thing cause you're my e - vry - thing

Bb

P.A.
F# *We prefer Guitar playing this part* AmMaj7 A/B E C#m7

Synth

Gtr.

Bass

D. S.

Perc.

Interlude 3



03 SATB Combo Eb

Everything

Words and Music by M. Publé, A. Chang
Arranged by Hans Reintjes
Original Key

DEMO

V E R S E

S

T

E

M

P

L

E

T

E

M

P

L

E

T

E

M

P

L

E

T

E

M

P

L

E

T

E

M

P

L

E

T

E

M

P

L

E

T

E

M

P

L

E

T

E

M

P

L

E

T

E

M

P

L

E

T

E

M

P

L

E

T

E

M

P

L

E

T

E

M

P

L

E

T

E

M

P

L

E

T

E

M

P

L

E

T

E

M

P

L

E

T

E

M

P

L

E

T

E

M

P

L

E

T

E

M

P

L

E

T

E

M

P

L

E

T

E

M

P

L

E

T

E

M

P

L

E

T

E

M

P

L

E

T

E

M

P

L

E

T

E

M

P

L

E

T

E

M

P

L

E

T

E

M

P

L

E

T

E

M

P

L

E

T

E

M

P

L

E

T

E

M

P

L

E

T

E

M

P

L

E

T

E

M

P

L

E

T

E

M

P

L

E

T

E

M

P

L

E

T

E

M

P

L

E

T

E

M

P

L

E

T

E

M

P

L

E

T

E

M

P

L

E

T

E

M

P

L

E

T

E

M

P

L

E

T

E

M

P

L

E

T

E

M

P

L

E

T

E

M

P

L

E

T

E

M

P

L

E

T

E

M

P

L

E

T

E

M

P

L

E

T

E

M

P

L

E

T

E

M

P

L

E

T

E

M

P

L

E

T

E

M

P

L

E

T

E

M

P

L

E

T

E

M

P

L

E

T

E

M

P

L

E

T

E

M

P

L

E

T

E

M

P

L

E

T

E

M

P

L

E

T

E

M

P

L

E

T

E

M

P

L

E

T

E

M

P

L

E

T

E

M

P

L

E

T

E

M

P

L

E

T

E

M

P

L

E

T

E

M

P

L

E

T

E

M

P

L

E

T

E

M

P

L

E

T

E

M

P

L

E

T

E

M

P

L

E

T

E

M

P

L

E

T

E

M

P

L

E

T

E

M

P

L

E

T

E

M

P

L

E

T

E

M

P

L

E

T

E

M

P

L

E

T

E

M

P

L

E

T

E

M

P

L

E

T

E

M

P

L

E

T

E

M

P

L

E

T

E

M

P

L

E

T

E

M

P

L

E

T

E

M

P

L

E

T

E

M

P

L

E

T

E

M

P

L

E

T

E

M

P

L

E

T

E

M

P

L

E

T

E

M

P

L

Chorus 1

22

S Cause you can see it when I look at you And in this cra - zy li - fe and through these cra - zy times It's you it's you

A Cause you can see it when I look at you And in this cra - zy li - fe and through these cra - zy times It's you it's you

T know its true. Cause you can see it when I look at you And in this cra - zy li - fe and through these cra - zy times It's you it's you

B know its true. Cause you can see it when I look at you And in this cra - zy li - fe and through these cra - zy times It's you it's you

Eb

P.A. E⁷ G^m G/A D G A D B^{m7} G A D D⁷

Synth

Gtr.

Bass

D. S.

Perc.

Interlude 1

29

S you make me sing you're e - vry word you're e - vry - thing

A you make me sing you're e - vry word you're e - vry - thing

T you make me sing you're e - vry line you're e - vry - thing

B you make me sing you're e - vry line you're e - vry - thing

Eb

P.A. G F#⁷ B^m D/A E⁷/G# GmMaj7 D B^{m7} E⁷ GmMaj7 G/A

Synth

Gtr.

Bass

D. S.

Perc.

Chorus 2

50

S way and you know that's what our love can do — And in this cra - zy - li - fe and through these cra - zy times — It's you — it's you — you make me sing

A way and you know that's what our love can do — And in this cra - zy - li - fe and through these cra - zy times — It's you — it's you — you make me sing

T through and you know that's what our love can do — And in this cra - zy - li - fe and through these cra - zy times — It's you — it's you — you make me sing

B through and you know that's what our love can do — And in this cra - zy - li - fe and through these cra - zy times — It's you — it's you — you make me sing

Eb E^7 G^m G/A D G A D Bm^7 G A D D^7 G $F\#^7$

P.A.

Synth

Gtr.

Bass

D. S.

Perc.

Instr. Solo

58

S — you're e - vry word — you're e - vry - thing — you're e - vry - thing

A — you're e - vry word — you're e - vry - thing — you're e - vry - thing

T — you're e - vry line — you're e - vry - thing — you're e - vry - thing

B — you're e - vry line — you're e - vry - thing — you're e - vry - thing

Eb B^m D/A $E^7/G\#$ $GmMaj7$ D^p Bm^7 E^7 G^m G/A D G/A

P.A.

Synth

Gtr. *Open for solo* *ff*

Bass

D. S.

Perc.

79

S
cra - zy times — It's you — it's you — you make me sing — you're e - v'ry word — you're e - v'ry - thing

A
cra - zy times — It's you — it's you — you make me sing — you're e - v'ry word — you're e - v'ry - thing

T
zy times — It's you — it's you — you make me sing — you're e - v'ry line — you're e - v'ry - thing

B
cra - zy times — It's you — it's you — you make me sing — you're e - v'ry line — you're e - v'ry - thing

Eb

P.A
A B E E7 A G#7 C#m E/B F#7/A# AmMaj7 C#m C#m7/B

Synth

Gtr.

Bass

D. S.

Perc.

87

Interlude 3

S
you're e - v'ry song. cause you're my e - v'ry - thing cause you're my e - v'ry - thing

A
you're e - v'ry song. cause you're my e - v'ry - thing

T
and I sing a - long, — cause you're my e - v'ry - thing

B
and I sing a - long, — cause you're my e - v'ry - thing cause you're my e - v'ry - thing

Eb

P.A
F# We prefer Guitar playing this part AmMaj7 A/B E C#m7 F#7 A6

Synth

Gtr.

Bass

D. S.

Perc.

Everything 3

04 SATB 4 extra staves

Chorus 1

S
smile at me you know ex-act-ly what you do ba-by don't _____ Cause you can see it when I look at you And in__ this cra - zy li - fe and through these cra - zy times

A
smile at me you know ex-act-ly what you do ba-by don't Cause you can see it when I look at you And in__ this cra - zy li - fe and through these cra - zy times

T
smile at me you know ex-act-ly what you do ba-by don't pre-tend that you don't know its true Cause you can see it when I look at you And in__ this cra - zy li - fe and through these cra - zy times

B
smile at me you know ex-act-ly what you do ba-by don't pre-tend that you don't know its true Cause you can see it when I look at you And in__ this cra - zy li - fe and through these cra - zy times

1
2
3
4

G^m G/A D G/A D B^{m7} E⁷ G^m G/A D G A A D B^{m7} G A

P.A.
[Musical notation for Piano and Accompaniment]

Synth
[Musical notation for Synthesizer]

Gtr.
[Musical notation for Guitar]

Bass
[Musical notation for Bass]

D. S.
[Musical notation for Drums]

Perc.
[Musical notation for Percussion]

Everything 5

04 SATB 4 extra staves

Verse 2

37

S *p* Yes I am Yes I am I light you up You're a mis - te - ry you're from ou - ter space, you're e - v'ry mi - nute of my e - v'ry day —

A *p* Yes I am Yes I am I light you up You're a mis - te - ry you're from ou - ter space, you're e - v'ry mi - nute of my e - v'ry day —

T *p* rou - sel, you're a wi - s'ing well, and you light me up when you ring my bell — *p* Yes I am Yes I am Yes I am And I can't be - lieve, un that I'm

B *p* rou - sel, you're a wi - s'ing well, and you light me up when you ring my bell — *p* Yes I am Yes I am Yes I am And I can't be - lieve, un that I'm

1
2
3
4

D Bm7 E7 G G/A D G/A D Bm7 E7 G G/A D G/A D Bm7

Synth 8 8 8 8 8 8 8 8

Dr. Perc.

D. S.

Bass

Git.

P.A.

Everything 7

04 SATB 4 extra staves

Instr. Solo

55

S
cra - zy times — It's you — It's you — you make me sing — you're e - v'ry word — you're e - v'ry - thing

A
cra - zy times — It's you — It's you — you make me sing — you're e - v'ry word — you're e - v'ry - thing

T
cra - zy times — It's you — It's you — you make me sing — you're e - v'ry - thing

B
cra - zy times — It's you — It's you — you make me sing — you're e - v'ry - thing

1
2
3
4

G A D D⁷ G F^{#7} B^m D/A E⁷/G[#] G^mMaj⁷ D B^m⁷ E⁷ G^m G/A

PA
Synth
Gtr.
Bass
D. S.
Perc.

Open for solo *ff*

Everything 9

04 SATB 4 extra staves

Chorus 3

74

S
la la la la la la And in this cra - - - zy li - fe - -
and through these cra - - - zy times - - - It's you - - - it's you - - - you make me sing - - -

A
la la la la la la And in this cra - - - zy li - fe - -
and through these cra - - - zy times - - - It's you - - - it's you - - - you make me sing - - -

T
la la la la la la And in this cra - - - zy li - fe - -
and through these cra - - - zy times - - - It's you - - - it's you - - - you make me sing - - -

B
la la la la la la And in this cra - - - zy li - fe - -
and through these cra - - - zy times - - - It's you - - - it's you - - - you make me sing - - - you're e - - - vry line

1
2
3
4

P.A.
E7 Gm G/A D A B E C#m7 A B E E7 A G#7 C#m E/B

Synth
8 8

Gtr.
Bass
D. S.
Perc.

05 SATB small Combo



Everything

Words and Music by M. Bubl , A. Chang
Arranged by Hans Reintjes
Original Key

DEMO

Intro $\text{♩} = 124$

Soprano

Alto

Tenor

Bass

Piano Adv.

Guitar *Ac. Guitar (steel)*

Bass Guitar

Drum Set

Percussion *Shaker*

D Bm7 E7 G6 D Bm7 E7 G6 D Bm7

www.ChorusOnline.com / 0031 (0) 6 - 41 57 77 56

16

S Ah, when you smile at me you know ex-act-ly what you do ba-by don't

A And you play it coy but its kind a cute. Ah, when you smile at me you know ex-act-ly what you do ba-by don't

T — And you play it coy but its kind a cute. Ah, when you smile at me you know ex-act-ly what you do ba-by don't

B — And you play it coy but its kind a cute. Ah, when you smile at me you know ex-act-ly what you do ba-by don't

D G/A D Bm⁷ E⁷ G^m G/A D G/A

P.A.

Gtr.

Bass

D. S.

Perc.

21

S Cause you can see it when I look at you And in__ this cra - - - zy_ li -

A Cause you can see it when I look at you And in__ this cra - - - zy_ li -

T pre - tend that you don't know its true. Cause you can see it when I look at you And in__ this cra - - - zy_ li -

B pre - tend that you don't know its true. Cause you can see it when I look at you And in__ this cra - - - zy_ li -

D Bm⁷ E⁷ G^m G/A D G A

P.A.

Gtr.

Bass

D. S.

Perc.

Chorus 1

Verse 2

36

S *p* Yes I am Yes I am I light you up You're a mis-

A *p* Yes I am Yes I am I light you up You're a mis-

T You're a ca - rou - sel, you're a wi - shing well, and you light me up, when you ring my bell. —

B You're a ca - rou - sel, you're a wi - shing well, and you light me up, when you ring my bell. —

D G/A D Bm7 E7 G G/A D G/A

P.A.

Gtr.

Bass

D. S.

Perc.

41

S te - ry, you're from ou - ter space, you're e - v'ry mi - nute of my e - v'ry day. —

A te - ry, you're from ou - ter space, you're e - v'ry mi - nute of my e - v'ry day. — And I can't be - lieve, uh that I'm

T *p* Yes I am Yes I am And I can't be - lieve, uh that I'm

B *p* Yes I am Yes I am And I can't be - lieve, uh that I'm

D Bm7 E7 G G/A D G/A D Bm7

P.A.

Gtr.

Bass

D. S.

Perc.

Everything 7
05 SATB small Combo

56

S
— It's you — it's you — you make me sing — you're e - v'ry word — you're e - v'ry - thing

A
— It's you — it's you — you make me sing — you're e - v'ry word — you're e - v'ry - thing

T
— It's you — it's you — you make me sing — you're e - v'ry line — you're e - v'ry - thing

B
— It's you — it's you — you make me sing — you're e - v'ry line — you're e - v'ry - thing

P.A.
D D⁷ G F^{#7} B^m D/A E⁷/G[#] GmMaj7

Gtr.

Bass

D. S.

Perc.

Instr. Solo

61

S
you're e - v'ry - thing —

A
you're e - v'ry - thing —

T
you're e - v'ry - thing —

B
you're e - v'ry - thing —

P.A.
D B^{m7} E⁷ G^m G/A D G/A D B^{m7}

Gtr.
Open for solo *ff*

Bass

D. S.

Perc.

Chorus 3

77

S
cra - - - zy li - fe and through these cra - - - zy times It's you it's you you make me sing

A
cra - - - zy li - fe and through these cra - - - zy times It's you it's you you make me sing

T
cra - - - zy li - fe and through these cra - - - zy times It's you it's you you make me sing

B
zy - li - fe and through these cra - - - zy times It's you it's you you make me sing

P.A.
A B E C#m7 A B E E7 A G#7

Gtr.

Bass

D. S.

Perc.

82

S
you're e - vry word you're e - vry - thing

A
you're e - vry word you're e - vry - thing

T
you're e - vry word you're e - vry - thing

B
you're e - vry line you're e - vry - thing

P.A.
C#m E/B F#7/A# AmMaj7 C#m C#m7/B

Gtr.

Bass

D. S.

Perc.

Coda

96

S
A
T
B
P.A
Gtr.
Bass
D. S.
Perc.

cause you're my e - vry - thing cause you're my e - vry - thing So
la la la la la la la So
la la la la la la la So
cause you're my e - vry - thing cause you're my e - vry - thing So

E C#m7 F#7 AmMaj7 A/B E A/B

100 rit.

S
A
T
B
P.A
Gtr.
Bass
D. S.
Perc.

la la la la la la la la la la
la la la la la la la la la la
la la la la la la la la la la
la la la la la la la la la la

E C#m7 F#7 A^m E

16

S
A
T
B

And you play it coy but its kind a cute. Ah, when you smile at me you know ex-act-ly what you do ba-by don't pre-tend that you don't

And you play it coy but its kind a cute. Ah, when you smile at me you know ex-act-ly what you do ba-by don't pre-tend that you don't

1
2

D G/A D Bm7 E7 Gm G/A D G/A D Bm7

PA

Gtr.
8

Bass
8

D. S.

Perc.

Everything 5
06 SATB small Combo extra staves

Interlude 1

29

S — you make me sing — you're e - v'ry word — you're e - v'ry - thing

A — you make me sing — you're e - v'ry word — you're e - v'ry - thing

T — you make me sing — you're e - v'ry line — you're e - v'ry - thing

B — you make me sing — you're e - v'ry line — you're e - v'ry - thing

1

2

G F#7 Bm D/A E7/G# GmMaj7 D Bm7 E7

PA

Gtr.

Bass

D. S.

Perc.

6 Everything

06 SATB small Combo extra staves

Verse 2

35

S
A
T
B

Yes | am
Yes | am
Yes | am
Yes | am

I light you up
I light you up
I light you up
I light you up

You're a mis-
You're a mis-
You're a mis-
You're a mis-

You're a ca - rou - sel,
you're a wi - shing well,
and you light me up,
when you ring my bell. —

1
2

GmMaj7 G/A D G/A D Bm7 E7 G G/A D G/A

PA
Gtr.
Bass
D. S.
Perc.

8 Everything

06 SATB small Combo extra staves

47

S get to kiss you ba - by just be - cause I can. What - e - ver comes our way and you know that's what our love can do — And in — this

A get to kiss you ba - by just be - cause I can. What - e - ver comes our way and you know that's what our love can do — And in — this

T get to kiss you ba - by just be - cause I can. What - e - ver comes our way — we will see it through and you know that's what our love can do — And in — this

B get to kiss you ba - by just be - cause I can. What - e - ver comes our way — we will see it through and you know that's what our love can do — And in — this

1

2

PA

Gm G/A D G/A D Bm7 E7 Gm G/A D

Gtr. 8

Bass

D. S.

Perc.

10 Everything

06 SATB small Combo extra staves

Instr. Solo

60

S
A
T
B

you're e - v'ry - thing —
you're e - v'ry - thing —
you're e - v'ry - thing —
you're e - v'ry - thing —

1
2

GmMaj7 D Bm7 E7 Gm G/A D G/A D Bm7 E7

PA

Open for solo

Gtr.

Bass

D. S.

Perc.

12 Everything

06 SATB small Combo extra staves

Chorus 3

74

S la la la la And in this cra - zy li - fe and through these cra zy times It's you - it's you

A la la la la And in this cra - zy li - fe and through these cra zy times It's you - it's you

T la la la la And in this cra - zy li - fe and through these cra zy times It's you - it's you

B la la la la And in this cra - zy li - fe and through these cra zy times It's you - it's you

1

2

PA E7 Gm G/A D A B E G#m7 A B E E7

Gtr. 8

Bass 8

D. S.

Perc.

14 Everything

06 SATB small Combo extra staves

Interlude 3

88

S
song.
cause you're my e - v'ry - thing
cause you're my e - v'ry - thing

A
song.
cause you're my e - v'ry - thing
cause you're my e - v'ry - thing

T
and I sing a - long, _____
cause you're my e - v'ry - thing

B
and I sing a - long, _____
cause you're my e - v'ry - thing
cause you're my e - v'ry - thing

1
2

PA
F#
We prefer Guitar plugging this part
AmMaj7
A/B
E
G#m7
F#7
A6

Gtr.
8

Bass
8

D. S.

Perc.

Everything



Words and Music by M. Bubl , A. Chang
 Arranged by Hans Reintjes
 Original Key

Intro $\text{♩} = 124$
 D B^{m7} E⁷ G⁶ D B^{m7} E⁷ G⁶ D B^{m7} E⁷

Piano Adv.

Verse 1

S
 A
 T
 B
 P.A.

You're a fal - ling star you're the get a - way car_ you're the line_ in the sand When I go

G^{mMaj7} G/A D G/A D B^{m7} E⁷ G A^{7sus4}

S
 A
 T
 B
 P.A.

too far You're the swim - ming pool, on an Au - gust day . And you're the per - fect thing_ to say_ And you play

D G/A D B^{m7} E⁷ G A^{7sus4} D G/A

Interlude 1

32

S
you're e - vry - thing

A
you're e - vry - thing

T
you're e - vry - thing

B
you're e - vry - thing

GmMaj7 D Bm7 E7 GmMaj7 G/A D G/A

P.A.

Verse 2

37

S
p Yes I am Yes I am I light you up You're a mis - te - ry, you're from ou -

A
p Yes I am Yes I am I light you up You're a mis - te - ry, you're from ou -

T
rou - sel, you're a wi - shing well, and you light me up, when you ring my bell. *p* Yes I am

B
rou - sel, you're a wi - shing well, and you light me up, when you ring my bell. *p* Yes I am

D Bm7 E7 G G/A D G/A D Bm7

P.A.

42

S
ter space, you're e - vry mi - nute of my e - vry day. and I

A
ter space, you're e - vry mi - nute of my e - vry day. And I can't be - lieve, uh that I'm your man, and I

T
Yes I am And I can't be - lieve, uh that I'm your man, and I

B
Yes I am And I can't be - lieve, uh that I'm your man, and I

E7 G G/A D G/A D Bm7 E7

P.A.

Instr. Solo

61

S
A
T
B

you're e-v'ry - thing —

you're e-v'ry - thing —

you're e-v'ry - thing —

you're e-v'ry - thing —

For solo: see guitarscore

D B^{m7} E⁷ G^m G/A D G/A D B^{m7} E⁷

P.A.

Interlude 2

67

S
A
T
B

So

So — la la la la la la la — So

So — la la la la la la la — So

So

G^m G/A D D B^{m7} E⁷ G^m G/A D G/A

P.A.

Chorus 3

73

S
A
T
B

la la la la la la la — And in — this cra - - - zy li -

la la la la la la la — cra - - - zy li -

la la la la la la la — And in — this cra - - - zy li -

la la la la la la la — zy — li -

D B^{m7} E⁷ G^m G/A D A B

P.A.

Interlude 3

92

S
cause you're my e - v'ry - thing
cause you're my e - v'ry - thing
So —

A
So —

T
So —

B
cause you're my e - v'ry - thing
cause you're my e - v'ry - thing

P.A.
E C#m7 F#7 A6 E C#m7 F#7 A6

Coda

96

S
cause you're my e - v'ry - thing
cause you're my e - v'ry - thing
So

A
la la la la la la la So

T
la la la la la la la So

B
cause you're my e - v'ry - thing
cause you're my e - v'ry - thing
So

P.A.
E C#m7 F#7 AmMaj7 A/B E A/B

100

S
la la la la la la la la la la la la la

A
la la la la la la la

T
la la la la la la la

B
la la la la la la la

P.A.
E C#m7 F#7 Am E

rit.

Everything



Words and Music by M. Bubl , A. Chang
 Arranged by Hans Reintjes
 Original Key

Intro $\text{♩} = 124$
 D Bm7 E7 G6 D Bm7 E7 G6 D Bm7 E7

Piano Mod.

Verse 1

S
 A
 T
 B

You're a fal - ling star you're the get a - way car_ you're the line_ in the sand When I go

GmMaj7 G/A D G/A D Bm7 E7 G A7sus4

P. M.

S
 A
 T
 B

too far You're the swim - ming pool, on an Au - gust day . And you're the per - fect thing_ to say_ And you play

D G/A D Bm7 E7 G A7sus4 D G/A

P. M.

Interlude 1

31

S
— you're e - v'ry word — you're e - v'ry - thing

A
— you're e - v'ry word — you're e - v'ry - thing

T
— you're e - v'ry - thing

B
— you're e - v'ry - thing

P. M
E⁷/G# GmMaj7 D B^{m7} E⁷ GmMaj7 G/A

Verse 2

36

S
p Yes I am Yes I am I light you up You're a mis-

A
p Yes I am Yes I am I light you up You're a mis-

T
You're a ca - rou - sel, you're a wi - shing well, and you light me up, when you ring my bell. —

B
You're a ca - rou - sel, you're a wi - shing well, and you light me up, when you ring my bell. —

P. M
D G/A D B^{m7} E⁷ G G/A D G/A

41

S
te - ry, you're from ou - ter space, you're e - v'ry mi - nute of my e - v'ry day. —

A
te - ry, you're from ou - ter space, you're e - v'ry mi - nute of my e - v'ry day. — And I can't be - lieve, uh that I'm

T
p Yes I am Yes I am And I can't be - lieve, uh that I'm

B
p Yes I am Yes I am And I can't be - lieve, uh that I'm

P. M
D B^{m7} E⁷ G G/A D G/A D B^{m7}

Instr. Solo

61

S
A
T
B

you're e-v'ry - thing —

you're e-v'ry - thing —

you're e-v'ry - thing —

you're e-v'ry - thing —

For solo: see guitarscore

D B^{m7} E⁷ G^m G/A D G/A D B^{m7}

P. M

Interlude 2

66

S
A
T
B

So — la la la la

So — la la la la

E⁷ G^m G/A D D B^{m7} E⁷

P. M

71

S
A
T
B

So la la la la la la la —

la la la — So la la la la la la —

la la la — So la la la la la la —

So la la la la la la —

G^m G/A D G/A D B^{m7} E⁷ G^m G/A

P. M

Interlude 3

92

S
cause you're my e - v'ry - thing
cause you're my e - v'ry - thing
So —

A
So —

T
So —

B
cause you're my e - v'ry - thing
cause you're my e - v'ry - thing

P. M
E C#m7 F#7 A6 E C#m7 F#7 A6

Coda

96

S
cause you're my e - v'ry - thing
cause you're my e - v'ry - thing
So

A
la la la la la la la So

T
la la la la la la la So

B
cause you're my e - v'ry - thing
cause you're my e - v'ry - thing
So

P. M
E C#m7 F#7 AmMaj7 A/B E A/B

100

S
la la la la la la la la la la la

A
la la la la la la la

T
la la la la la la la

B
la la la la la la la

P. M
E C#m7 F#7 Am E

rit.



09 SATB

Everything

Words and Music by M. Bubl , A. Chang
Arranged by Hans Reintjes
Original Key

Intro

Verse 1

Tempo: ♩ = 124

Tenor
8 You're a fal - ling star you're the get a-way car _ you're the line

Bass
7 You're a fal - ling star you're the get a-way car _ you're the line

T
8 3 _ in the sand When I go to far _ You're the swim - ming pool, on a Au -

B
3 _ in the sand When I go to far _ You're the swim - ming pool, on a Au -

S
14

A
And you play it coy but its kind

T
8 gust day . And you're the per-fect thing to say _ And you play it coy but its kind

B
gust day . And you're the per-fect thing to say _ And you play it coy but its kind

28

S — It's you it's you — you make me sing — you're e - v'ry word

A — It's you it's you — you make me sing — you're e - v'ry word

T — It's you it's you — you make me sing — you're e - v'ry line

B — It's you it's you — you make me sing — you're e - v'ry line

Interlude 1

Verse 2

32

S — you're e - v'ry - thing *p* Yes I am

A — you're e - v'ry - thing *p* Yes I am

T — you're e - v'ry - thing You're a ca - rou - sel, you're a wi -

B — you're e - v'ry - thing You're a ca - rou - sel, you're a wi -

38

S Yes I am I light you up You're a mis -

A Yes I am I light you up You're a mis -

T shing well, and you light me up, when you ring my bell. —

B shing well, and you light me up, when you ring my bell. —

Chorus 2

53

S
cra - zy li - fe and through these cra - zy times — It's you it's you

A
cra - zy li - fe and through these cra - zy times — It's you it's you

T
8
cra - zy li - fe and through these cra - zy times — It's you it's you

B
cra - zy li - fe and through these cra - zy times — It's you it's you

57

S
— you make me sing — you're e - v'ry word — you're e - v'ry - thing

A
— you make me sing — you're e - v'ry word — you're e - v'ry - thing

T
8
— you make me sing — you're e - v'ry line — you're e - v'ry - thing

B
— you make me sing — you're e - v'ry line — you're e - v'ry - thing

Instr. Solo

61

S
2
you're e - v'ry - thing —

A
2
you're e - v'ry - thing — So —

T
8
2
you're e - v'ry - thing — So —

B
2
you're e - v'ry - thing —



10 C Instrument

Everything

Words and Music by M. Bubl , A. Chang
Arranged by Hans Reintjes
Original Key

Intro

$\text{♩} = 124$ 4

Verse 1

8

Chorus 1

17 7

Interlude 1

29 2

Verse 2

36 8

p

Chorus 2

49

Instr. Solo

55 2

p

62

Interlude 2

66

70



11 Bb Instrument

Everything

Words and Music by M. Bubl , A. Chang
Arranged by Hans Reintjes
Original Key

Intro $\text{♩} = 124$ **4** *Verse 1* **8**

17 *Chorus 1* **7**

29 *Interlude 1* **2**

36 *Verse 2* **8** *p*

49 *Chorus 2*

55 *Instr. Solo* **2** *p*

62

66 *Interlude 2*

70



12 Eb Instrument

Everything

Words and Music by M. Bubl , A. Chang
Arranged by Hans Reintjes
Original Key

Intro

♩ = 124

4

Verse 1

9

8

7

Chorus 1

Interlude 1

27

2

Verse 2

34

8

p

Chorus 2

53

2

Instr. Solo

60

p

Interlude 2

69



13 Piano Advanced

Everything

Words and Music by M. Bubl , A. Chang
Arranged by Hans Reintjes
Original Key

Intro

♩ = 124

D Bm7

E7 G6 D Bm7 E7

GmMaj7 G/A Verse 1

www.ChorusOnline.com / 0031 (0) 6 - 41 57 77 56



14 Piano Moderated

Everything

Words and Music by M. Bublé, A. Chang
Arranged by Hans Reintjes
Original Key

Intro ♩ = 124

D Bm7 E7 G6 D Bm7

E7 G6 D Bm7 E7

Verse 1

GmMaj7 G/A D G/A D Bm7 E7

G A7sus4 D G/AD Bm7 E7 G A7sus4

© www.ChorusOnline.com / 0031 (0) 6 - 41 57 77 56



15 Synthesizer

Everything

Words and Music by M. Bubl , A. Chang
Arranged by Hans Reintjes
Original Key

Intro

$\text{♩} = 124$

Warm Pad

Verse 1

10

18

Chorus 1

25



16 Guitar

Everything

Words and Music by M. Bubl , A. Chang
Arranged by Hans Reintjes
Original Key

Intro ♩ = 124 Ac. Guitar (steel)

D Bm7 E7 G6 D Bm7 E7 G6

D Bm7 E7 GmMaj7 G/A D G/A

Verse 1

D Bm7 E7 G A7sus4 D G/A D Bm7

E7 G A7sus4 D G/A D Bm7 E7

Gm G/A D G/A D Bm7 E7

Chorus 1

Gm G/A D G A D Bm7 G A

© www.ChorusOnline.com / 0031 (0) 6 - 41 57 77 56

Everything

Intro

$\text{♩} = 124$
3

D B^{m7} E⁷ G^mMaj7 G/A

Verse 1

8 D G/A D B^{m7} E⁷ G A⁷_{sus4} D G/A

13 D B^{m7} E⁷ G A⁷_{sus4} D G/A D B^{m7}

18 E⁷ G^m G/A D G/A D B^{m7} E⁷

Chorus 1

23 G^m G/A D G A D B^{m7} G A

28 D D⁷ G F^{#7} B^m D/A E⁷/G[#] G^mMaj7

Interlude 1

33 D B^{m7} E⁷ G^mMaj7 G/A D G/A

Verse 2

38 E⁷ G G/A D G/A D B^{m7} E⁷

43 G G/A D G/A D B^{m7} E⁷ G^m G/A

48 D G/A D B^{m7} E⁷ G^m G/A D

Drumkit/Percussion

High Tom
Hi-Hat closed
Hi-Hat open
Mid Tom
Low Tom
Ride Cymbal
Crash Cymbal
Triangle mute
Bassdrum (Kick)
Snareclick
Snaredrum
Hi-Hat Foot
Floor Tom
Ride Bell/Cup
Splash Cymbal
Tambourine Beating
Triangle open

- Shaker (eggs)
- Claves
- High Timbale
- Sleigh Bells
- Bell Tree
- Maracas
- Wind Chimes

Handclap
Güiro
Woodblock High
Timbale Low
Agogo High
Cowbell
Conga
Cabasa
Woodblock Low
Agogo Low



18 Drum Set

Everything

Words and Music by M. Bubl , A. Chang
Arranged by Hans Reintjes
Original Key

Intro

♩ = 124 >

6

Verse 1

11

17

Chorus 1

25

30

Interlude 1

33

Verse 2

37

45

© www.ChorusOnline.com / 0031 (0) 6 - 41 57 77 56

Drumkit/Percussion

Hi-Hat closed
Hi-Hat open
Shareclick
Bassdrum (Kick)
Snaredrum
Hi-Hat Foot
High Tom
Mid Tom
Low Tom
Floor Tom
Ride Cymbal
Ride Bell/Cup
Crash Cymbal
Splash Cymbal
Triangle mute
Tambourine Beating
Triangle open

- Shaker (eggs)
- Claves
- High Timbale
- Sleigh Bells
- Bell Tree
- Maracas
- Wind Chimes

Cowbell
Handclap
Conga Cabasa
Guiro
Woodblock High
Woodblock Low
Timbale Low
Agogo High
Agogo Low



19 Percussion

Everything

Words and Music by M. Bubl , A. Chang
Arranged by Hans Reintjes
Original Key

Intro

♩ = 124

4

Shaker

Verse 1

9

Conga Low

Conga High

14

19

Chorus 1

24

Interlude 1

29

Verse 2

34

39

44

Everything

Words and Music by M. Bubl , A. Chang
 Arranged by Hans Reintjes
 Original Key

Intro

♩ = 124

D B^{m7} E⁷ G⁶ D B^{m7} E⁷ G⁶



5 D B^{m7} E⁷ G^{mMaj7} G/A D G/A



You're a fal-

Verse 1

9 D B^{m7} E⁷ G A^{7sus4}



ling star you're the get a - way car — you're the line — in the sand When I go

12 D G/A D B^{m7} E⁷



too far — You're the swim - ming pool, on an Au - gust day . And you're the

15 G A^{7sus4} D G/A D B^{m7}



per - fect thing — to say — And you play it coy but its kind

18 E⁷ G^m G/A D G/A



a cute. Ah, when you smile at me you know ex - act - ly what you do ba - by don't

21 D B^{m7} E⁷ G^m G/A



pre - tend that you don't know its true. Cause you can see it when I look at you

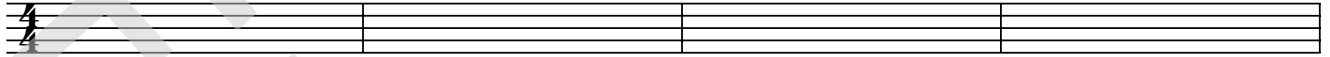


21 Empty paper

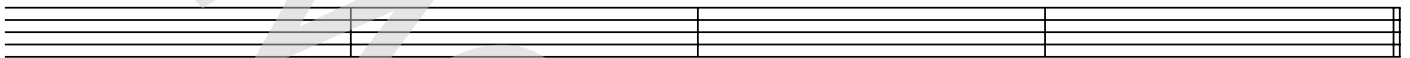
Everything

Words and Music by M. Bubl , A. Chang
Arranged by Hans Reintjes
Original Key

Intro = 124

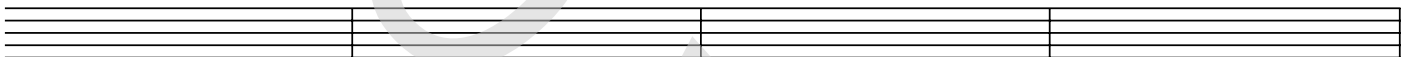


5

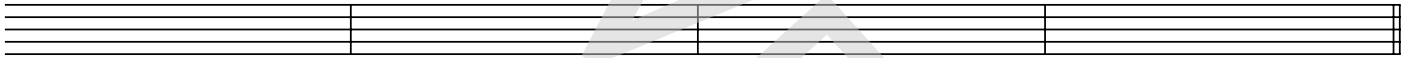


Verse 1

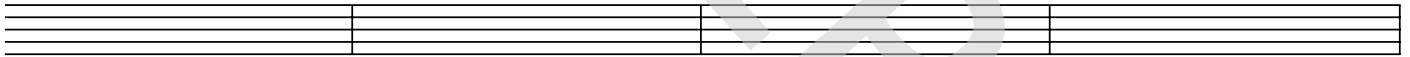
9



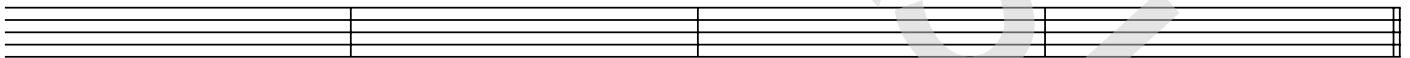
13



17

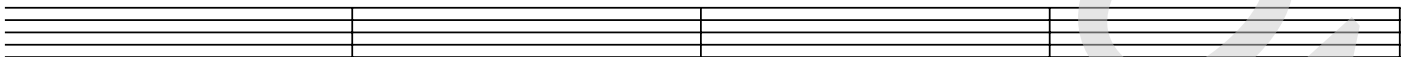


21

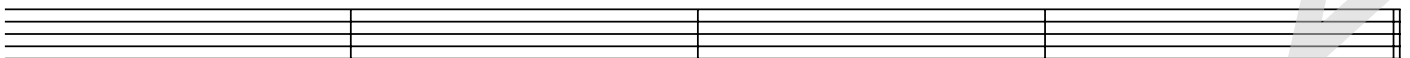


Chorus 1

25

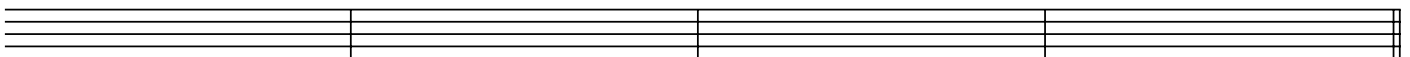


29



Interlude 1

33



© www.ChorusOnline.com / 0031 (0) 6 - 41 57 77 56

Everything

22 Lyrics

Words and Music by M. Bublé, A. Chang
Arranged by Hans Reintjes
Original Key

- Verse 1 You're a falling star, You're the getaway car.
 You're the line in the sand when I go too far.
 You're the swimming pool, on an August day.
 And you're the perfect thing to say.
- And you play it coy, but it's kinda cute.
 Ah, When you smile at me you know exactly what you do.
 Baby don't pretend, that you don't know it's true.
 Cause you can see it when I look at you.
- Chorus And in this crazy life, and through these crazy times
 It's you, it's you, You make me sing.
 You're every line, you're every word, you're everything.
- Interlude 1
- Verse 2 You're a carousel, you're a wishing well,
 And you light me up, when you ring my bell.
 You're a mystery, you're from outer space,
 You're every minute of my every day.
- And I can't believe, uh that I'm your man,
 And I get to kiss you baby just because I can.
 Whatever comes our way, ah we'll see it through,
 And you know that's what our love can do.
- Chorus
- Solo ... you're everything
- Interlude 2 So, La, La, La, La, La, La, La, La (2x)
- Chorus You're every song, and I sing along.
 'Cause you're my everything
 ('Cause you're my everything)
- Coda So, La, La, La, La, La, La, La, La
 So, La, La, La, La, La, La, La, La, La, La