



## **Lippy Kids – Elbow SATB**

Pag.

02	Full score combo
10	Full score combo 4 extra staves
21	Full score vocals (SATB) piano solo
32	Vocals (SATB)
40	Piano Combo
44	Piano Solo
48	Synthesizer
51	Guitar
53	Bassguitar
56	Leadsheet (melody, lyrics, chords)
60	Lyrics



SATB Combo

# Lippy Kids

- Elbow -

Words by Guy Garvey  
Music by Elbow  
Arranged by Hans Kaldewey  
Original Key

DEMO

LEAFLET

**A** ♩ = 52

*Whistle (solo)*

Soprano

Alto

Tenor

Bass

Piano Combo

*mp*

Synthesizer

*Perc. Organ*

Guitar

Bass Guitar

D<sup>7sus4</sup> G/d G/c G D<sup>7sus4</sup> G/d C<sub>sus2</sub> G/c G<sub>5</sub>



76

S  
set - tling like crows. And I nev er ef - fect - ed that simi - an stroll, no. *Whistle (solo)*

A  
*pp*  
mm

T  
set - tling like crows. And I nev er ef - fect - ed that simi - an stroll, no. *mf* Do they

B  
*pp*  
mm

Csus2 G/c G5 D<sup>m</sup> G/d C<sub>sus2</sub> G/c G D<sup>7sus4</sup> G/d C<sub>sus2</sub> G5

P.C.

Synth

Gtr.

Bass

E

87 *mp*

S  
know those days mm mm mm One long june

A  
*mp*  
know those days mm mm mm One long june

T  
know those days are gold - en, Build a rock - et boys, build a rock - et boys. One long June I

B  
*mp*  
know those days mm mm mm One long june

C<sup>add2</sup> G/b G E<sup>m7</sup> D<sup>sus4</sup> G/b C<sup>add2</sup> G/b G *p* E<sup>m7</sup> D<sup>sus4</sup> G/b C<sup>add2</sup> G/b G

P.C.

Synth

Gtr.

Bass



SATB 4 extra staves

# Lippy Kids

- Elbow -

Words by Guy Garvey  
Music by Elbow  
Arranged by Hans Kaldeway  
Original Key

A ♩ = 52  
 Soprano *Mystic (solo)*  
 Alto *pp*  
 Tenor *pp*  
 Bass *pp*  
 Piano Combo *mp*  
 Synthesizer *Pure Organ*  
 Guitar  
 Bass Guitar

D<sup>7</sup>sus<sup>4</sup> G/d G/c G D<sup>7</sup>sus<sup>4</sup> G/d C<sup>sus</sup>2 G/c G<sup>5</sup> D<sup>m</sup> G/d C<sup>sus</sup>2 G/c G D<sup>7</sup>sus<sup>4</sup> G/d C<sup>sus</sup>2 G<sup>5</sup>



# Lippy Kids 5

SATB 4 extra staves

61

S  
mm  
mm  
mpp  
Lip-py kids on the cor-ner a-gain.

A  
mm  
mm  
mpp  
mpp

T  
Build a rock - et boys,  
build a rock - et boys,  
build a rock - et boys.  
Lip-py kids on the cor-ner a-gain.  
mpp  
mpp

B  
mm  
mm  
mm  
mpp  
mpp

1  
2  
3  
4

P.C.  
G/b G  
Em7 Dsus4  
G/b Cadd2  
G/b G  
Em7 Dsus4  
G/b G5/d  
D7sus4 G/d G/c  
G

Synth

Ch.

BASS

Lippy Kids 7  
SATB 4 extra staves

90

S  
mm  
One long June  
mm  
kerb - stone  
cool  
mm

A  
mm  
One long June  
mm  
kerb - stone  
cool  
mm

T  
Build a rock - et boys,  
build a rock - et boys,  
One long June  
I came down from the trees  
and kerb - stone  
cool  
you were a fresh-ly paint-ed an - gel.

B  
mm  
One long June  
mm  
kerb - stone  
cool  
mm

1  
2  
3  
4

P.C.  
G/b Cadd2 G/b G Em7 D sus4 G/b Cadd2 G/b G Em7 D sus4 G/b Cadd2 G/b G Em7 D sus4 G/b Cadd2

Synth

Ch.

BASS





# Lippy Kids

- Elbow -

Words by Guy Garvey  
Music by Elbow  
Arranged by Hans Kaldeway  
Original Key

**A** ♩ = 52

Whistle (solo)

Soprano

Alto

Tenor

Bass

Piano Solo  
Advanced

*mp*

$D^{7sus4}$   $G/d$   $G/c$   $G$

9

S

A

T

B

*pp*

*mm*

*pp*

*mm*

*pp*

*mm*

*pp*

*mm*

P.S.A.

$D^{7sus4}$   $G/d$   $C^{sus2}$   $G/c$   $G5$   $D^m$   $G/d$   $C^{sus2}$   $G/c$   $G$

32

S *mp* \_\_\_\_\_  
mm \_\_\_\_\_

A *mp* \_\_\_\_\_  
mm \_\_\_\_\_

T *mf*  
the cig-a-rette sen-ate was ev-'ry-thing then. Do they know those days are

B *mp* \_\_\_\_\_  
mm \_\_\_\_\_

P.S.A.  
D<sup>7sus4</sup> G/d C<sup>sus2</sup> G<sup>5</sup> C<sup>add2</sup> G/b G

39

S \_\_\_\_\_  
mm \_\_\_\_\_

A \_\_\_\_\_  
mm \_\_\_\_\_

T \_\_\_\_\_  
gold-en. Build a rock-et boys, build a rock-et boys. One long June I

B \_\_\_\_\_  
mm \_\_\_\_\_

P.S.A.  
E<sup>m7</sup> D<sup>sus4</sup> G/b C<sup>add2</sup> G/b G E<sup>m7</sup> D<sup>sus4</sup> G/b C<sup>add2</sup> G/b G

59

S  
mm

A  
mm

T  
8  
an - y - more. Build a rock - et boys, — build a rock - et boys,

B  
mm

E m7 D sus4 G/b C add2 G/b G E m7 D sus4 G/b C add2 G/b

P.S.A.

66

S  
mm  
Lip - py kids on the cor - ner a - gain.

A  
mm  
pp

T  
8  
build a rock - et boys. Lip - py kids on the cor - ner a - gain.

B  
mm  
pp

G E m7 D sus4 G/b G5/d D7sus4 G/d G/c

P.S.A.

**E**

87 *mp*

S know those days mm mm mm

A know those days mm mm mm

T 8 know those days are gold - en. Build a rock - et boys, build a rock - et boys.

B *mp* know those days mm mm mm

C<sup>add2</sup> G/b G E<sup>m7</sup> D<sup>sus4</sup> G/b C<sup>add2</sup> G/b G E<sup>m7</sup> D<sup>sus4</sup> G/b C<sup>add2</sup>

P.S.A.

95

S One long june mm kerb - stone cool mm

A One long june mm kerb - stone cool mm

T 8 One long June I came down from the trees and kerb - stone cool you were a fresh - ly paint - ed

B One long june mm kerb - stone cool mm

G/b G E<sup>m7</sup> D<sup>sus4</sup> G/b C<sup>add2</sup> G/b G E<sup>m7</sup> D<sup>sus4</sup>

P.S.A.

F

117

S *mm* *Whistle (solo)*

A *mm* *very soft attack*  
do do do do do

T *mp* *very soft attack*  
- et boys. do do do do do do do do do do do do

B *mm* *dm* *dm* *dm*

E<sup>m7</sup> D<sup>sus4</sup> G/b G<sup>5/d</sup> D<sup>7sus4</sup> G/d G/c G

P.S.A.

124

S *very soft attack*  
do do

A *do do*

T *do do*

B *dm dm dm dm dm dm dm dm dm dm dm*

D<sup>7sus4</sup> G/d C<sup>sus2</sup> G/c G<sup>5</sup> D<sup>m</sup> G/d

P.S.A.



# Lippy Kids

- Elbow -

Words by Guy Garvey  
Music by Elbow  
Arranged by Hans Kaldeway  
Original Key

**A** ♩. = 52

Whistle (solo)

Soprano  
Alto  
Tenor  
Bass

11

S  
A  
T  
B

**B**

20

S  
A  
T  
B

Lip-py kids on the cor-ner a-gain. Lip-py kids on the cor-ner be-gin set-tl-ing like

52

S

A

T

B

an - gel. Walk - ing on walls, steal - ing booze and hour long hun - gry kiss - es. And

mm mm mm

58

S

A

T

B

no - bod - y knew me at home an - y - more. Build a rock - et boys,

mm mm mm

64

S

A

T

B

build a rock - et boys, build a rock - et boys.

mm mm

89

S  
mm mm mm

A  
mm mm mm

T  
8 gold - en. Build a rock - et boys, build a rock - et boys.

B  
mm mm mm

95

S  
One long june mm kerb - stone cool

A  
One long june mm kerb - stone cool

T  
8 One long June I came down from the trees and kerb - stone cool you were a

B  
One long june mm kerb - stone cool

101

S  
mm mm mm

A  
mm mm mm

T  
8 \_fresh-ly\_ paint-ed an - gel. Walk-ing on walls, steal-ing booze and hour longhun-gry

B  
mm mm mm

123 *very soft attack*

S  
doo doo doo doo doo doo doo doo doo doo doo doo doo doo

A  
doo doo doo doo doo doo doo doo doo doo doo doo doo doo

T  
doo doo doo doo doo doo doo doo doo doo doo doo doo doo

B  
dm dm dm dm dm dm dm dm dm

128

S  
doo doo doo doo doo doo doo doo doo doo doo doo doo doo

A  
doo doo doo doo doo doo doo doo doo doo doo doo doo doo

T  
doo doo doo doo doo doo doo doo doo doo doo doo doo doo

B  
dm dm dm dm dm dm dm dm dm dm dm dm

133 **G**

S  
doo doo doo doo doo doo doo doo doo doo doo doo doo doo

A  
doo doo doo doo doo doo doo doo doo doo doo doo doo doo

T  
doo doo doo doo doo doo doo doo doo doo doo doo doo doo

B  
dm dm dm dm dm dm doo doo doo doo

# Lippy Kids

- Elbow -

Words by Guy Garvey

Music by Elbow

Arranged by Hans Kaldewey

Original Key

**A** ♩ = 52

D<sup>7sus4</sup> G/d G/c

7 G D<sup>7sus4</sup> G/d C<sup>sus2</sup> G/c G<sup>5</sup> D<sup>m</sup> G/d

14 C<sup>sus2</sup> G/c G D<sup>7sus4</sup> G/d C<sup>sus2</sup> G<sup>5</sup>

**B** 21 D<sup>7sus4</sup> G/d G/c G D<sup>7sus4</sup> G/d C<sup>sus2</sup> G/c G<sup>5</sup>

28 D<sup>m</sup> G/d C<sup>sus2</sup> G/c G D<sup>7sus4</sup> G/d C<sup>sus2</sup>

**C** 35 G<sup>5</sup> C<sup>add2</sup> G/b G E<sup>m7</sup> D<sup>sus4</sup> G/b C<sup>add2</sup>

77 G5 D<sup>m</sup> G/d C<sup>sus2</sup> G/c G D<sup>7sus4</sup> G/d

84 C<sup>sus2</sup> G5 E C<sup>add2</sup> G/b G E<sup>m7</sup> D<sup>sus4</sup> G/b C<sup>add2</sup>

91 G/b G *p* *8va* E<sup>m7</sup> D<sup>sus4</sup> G/b C<sup>add2</sup> G/b G

97 E<sup>m7</sup> D<sup>sus4</sup> G/b C<sup>add2</sup> G/b G E<sup>m7</sup> D<sup>sus4</sup> G/b C<sup>add2</sup>

103 G/b G E<sup>m7</sup> D<sup>sus4</sup> G/b C<sup>add2</sup> G/b G

109 E<sup>m7</sup> D<sup>sus4</sup> G/b C<sup>add2</sup> G/b G E<sup>m7</sup> D<sup>sus4</sup>

# Lippy Kids

- Elbow -

Words by Guy Garvey  
Music by Elbow  
Arranged by Hans Kaldewey  
Original Key

**A** ♩. = 52

*mp*

D<sup>7sus4</sup> G/d G/c G

8 D<sup>7sus4</sup> G/d C<sup>sus2</sup> G/c G<sup>5</sup> D<sup>m</sup> G/d

14 C<sup>sus2</sup> G/c G D<sup>7sus4</sup> G/d C<sup>sus2</sup> G<sup>5</sup>

**B**

21 D<sup>7sus4</sup> G/d G/c G D<sup>7sus4</sup> G/d C<sup>sus2</sup> G/c G<sup>5</sup>

28 D<sup>m</sup> G/d C<sup>sus2</sup> G/c G D<sup>7sus4</sup> G/d C<sup>sus2</sup>

# Lippy Kids

- Elbow -

Words by Guy Garvey  
Music by Elbow  
Arranged by Hans Kaldeway  
Original Key

**A** ♩ = 52

Musical notation for section A, measures 1-10. The piece is in 6/8 time with a key signature of one sharp (F#). The notation is for a Perc. Organ. The right hand plays a series of chords, and the left hand plays a rhythmic accompaniment.

Musical notation for section A, measures 11-20. The notation continues from the previous system.

**B**

Musical notation for section B, measures 21-30. The notation continues from the previous system.

**C**

Musical notation for section C, measures 31-40. The notation continues from the previous system.

Musical notation for section C, measures 41-50. The notation continues from the previous system.

# Lippy Kids

- Elbow -

Words by Guy Garvey  
Music by Elbow  
Arranged by Hans Kaldeway  
Original Key

**A** ♩. = 52      **B**      **C**

Guitar

20      16

41

47

53

59

66      16

**D**

# Lippy Kids

- Elbow -

Words by Guy Garvey  
Music by Elbow  
Arranged by Hans Kaldeway  
Original Key

**A** ♩. = 52

Bass Guitar

4

D<sup>7sus4</sup> G/d G/c G

9 D<sup>7sus4</sup> G/d C<sup>sus2</sup> G/c G<sup>5</sup> D<sup>m</sup> G/d C<sup>sus2</sup> G/c G

**B**

16 D<sup>7sus4</sup> G/d C<sup>sus2</sup> G<sup>5</sup> D<sup>7sus4</sup> G/d G/c

23 G D<sup>7sus4</sup> G/d C<sup>sus2</sup> G/c G<sup>5</sup> D<sup>m</sup> G/d

30 C<sup>sus2</sup> G/c G D<sup>7sus4</sup> G/d C<sup>sus2</sup> G<sup>5</sup>

**C**

37 C<sup>add2</sup> G/b G E<sup>m7</sup> D<sup>sus4</sup> G/b C<sup>add2</sup> G/b G E<sup>m7</sup> D<sup>sus4</sup>

44 G/b C<sup>add2</sup> G/b G E<sup>m7</sup> D<sup>sus4</sup> G/b C<sup>add2</sup> G/b G

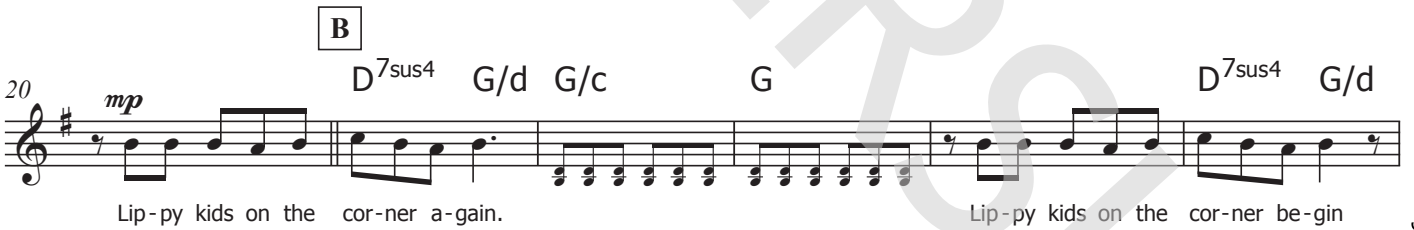
# Lippy Kids

- Elbow -

Words by Guy Garvey  
Music by Elbow  
Arranged by Hans Kaldewey  
Original Key

**A** ♩ = 52

D<sup>7sus4</sup> G/d G/c  
*Whistle (solo)*



# Lippy Kids

- Elbow -

*Words by Guy Garvey  
Music by Elbow  
Arranged by Hans Kaldeway  
Original Key Gmajor*

A  
B  
Lippy kids on the corner again  
Lippy Kids on the corner begin  
Settling like crows  
Though I never perfected the simian stroll  
The cigarette senate was ev'rything then

C  
Do they know those days are golden  
Build a rocket boys  
Build a rocket boys  
One long June  
I came down from the trees  
And kerbstone cool  
You were a freshly painted angel  
Walked on walls  
Stealing booze and hour-long hungry kisses  
And nobody knew me at home anymore  
Build a rocket boys  
Build a rocket boys  
Build a rocket boys

D  
Lippy kids on the corner again  
Lippy Kids on the corner begin  
Settling like crows  
And I never effected that simian stroll  
No

E  
Do they know those days are golden  
Build a rocket boys  
Build a rocket boys  
One long June  
I came down from the trees  
And kerbstone cool  
You were a freshly painted angel  
Walked on walls  
Stealing booze and hour-long hungry kisses  
And nobody knows me at home anymore  
Build a rocket boys  
Build a rocket boys  
Build a rocket boys