



You take my breath away – Queen SSSAA

Pag.

02	Full score combo
11	Full score vocals (SSSAA) piano advanced
21	Full score vocals (SSSAA) piano moderated
31	Vocals (SSSAA)
40	Piano advanced
45	Piano moderated
50	Guitar
51	Bassguitar
52	Drumkit
54	Leadsheet (melody, lyrics, chords)
58	Empty paper
61	Lyrics



01 SSSAA Combo

You Take My Breath Away

- Queen -

Words and Music by Freddy Mercury
Arranged by Hans Kaldeway
Original Key

Rubato

Soprano 1 *mf* oo

Soprano 2 *mf* oo all a - way

Soprano 3 *mf* oo all a - way

Alto 1 *mf* Take it take it all a - way

Alto 2 *mf* Take it take it all a - way

S 1 oo take my breath a - way oo oo

S 2 oo take my breath a - way oo

S 3 oo take my breath a - way oo

A 1 oo take my breath a - way oo

A 2 oo take my breath a - way oo

You Take My Breath Away 3
01 SSSAA Combo

30

S 2
Ev' - ry time you make a move___ you des - troy my mind___ and the way you touch I lose con - trol

A 2
mp
Ev' - ry time you make a move___ you des - troy my mind___ and the way you touch I lose con - trol

P.A.
Fm7 Bb7 Eb/G F#dim

34

S 2
___ and shi - ver___ deep in - side You take my breath a - way___

A 2
___ and shi - ver___ deep in - side You take my breath a - way___

P.A.
Fm7 Cm Fm6/C

38

S 2
You can re - duce me to tears___ witha sin - gle sigh

P.A.
Cm Fm6/C Cm Cm Fm6/C Cm Fm7/C C Fm6/C

You Take My Breath Away 5
01 SSSAA Combo

54 *mf*

S 2 You take my breath a - way _____ So please don't

A 2 You take my breath a - way _____

P.A. Cm Fm6/C Cm Fm6/C Cm

59 *p*

S 1 oo _____

S 2 go, _____ don't leave me here all by my - self, I get ev - er so lone - ly from time to time

S 3 oo _____

A 1 oo _____

A 2 oo _____

P.A. B \flat A \flat /B \flat B \flat 7 B \flat A \flat /B \flat B \flat 7 B \flat A \flat /B \flat B \flat 7 E \flat

You Take My Breath Away 7

01 SSSAA Combo

72

S 2

take my breath a - way

P.A.

Gtr.

Bass

Cm Fm6/C Cm Fm6/C Cm Cm Fm6/C Cm Fm7/C

Until m. 84: Play only when no guitar is available

78

S 1

noh noh noh noh noh noh noh noh noh noh noh noh noh

S 2

noh noh noh noh

S 3

noh noh noh noh noh noh noh noh noh noh noh noh noh

A 1

noh noh noh noh noh noh noh noh noh noh noh noh noh

A 2

noh noh noh noh noh noh noh noh noh noh noh noh noh

P.A.

Gtr.

Bass

Cm Fm6/C Cm B \flat A \flat /B \flat B \flat A \flat /B \flat B \flat A \flat /B \flat

mp *legatissimo*

You Take My Breath Away 9
01 SSSAA Combo

92

S 1 *ppp*
found you I love you _____

S 2 *ppp*
found you I love you _____

S 3 *ppp*
found you I love you _____

A 1 *ppp*
found you I love you _____

A 2 *ppp*
found you I love you _____

P.A.
Cm Fm6/C Cm Fm6/C Cm

Bass



You Take My Breath Away

- Queen -

Words and Music by Freddy Mercury
Arranged by Hans Kaldeway
Original Key

Rubato

Soprano 1 *mf* oo oo

Soprano 2 *mf* oo all a - way

Soprano 3 *mf* oo all a - way

Alto 1 *mf* Take it take it all a - way

Alto 2 *mf* Take it take it all a - way

S 1 6 oo take my breath a - way oo

S 2 oo take my breath a - way oo

S 3 oo take my breath a - way oo

A 1 oo take my breath a - way oo

A 2 oo take my breath a - way oo

You Take My Breath Away 3

02 SSSAA Piano Advanced

30

S 2

Ev'-ry time you make a move — you des-troy my_ mind — and the way you touch I lose con - trol

A 2

mp

Ev'-ry time you make a move — you des-troy my_ mind — and the way you touch I lose con - trol

Fm7 B \flat 7 E \flat /G F \sharp dim

P.A

34

S 2

— and shi - ver deep in - side You take my breath a - way —

A 2

— and shi - ver deep in - side You take my breath a - way —

Fm7 Cm Fm6/C

P.A

38

S 2

You can re-duce me to tears — with a sin - gle sigh

Cm Fm6/C Cm Cm Fm6/C Cm Fm7/C C Fm6/C

P.A

38

You Take My Breath Away 5
02 SSSAA Piano Advanced

51

S 1

S 2

S 3

A 1

A 2

P.A

If you dis - miss me from your love You take my breath a - way

If you dis - miss me from your love You take my breath a - way

F#dim Fm7

55

S 1

S 2

S 3

A 1

A 2

P.A

oo

So please don't go, don't

oo

oo

oo

Cm Fm6/C Cm Fm6/C Cm Bb Ab/Bb Bb7

You Take My Breath Away 7
02 SSSAA Piano Advanced

69

S 1
sleep tell you that you just

S 2
till I find you to tell you that you just take my breath a - way

S 3
sleep tell you that you just

A 1
sleep tell you that you just

A 2
sleep tell you that you just
F#dim Fm7

P.A

73

S 1

S 2

S 3

A 1

A 2

P.A
Cm Fm6/C Cm Fm6/C Cm Cm Fm6/C

You Take My Breath Away 9
02 SSSAA Piano Advanced

85 *mf* *cresc.*

S 1 find you an - y - where you go ah

S 2 find you an - y - where you go oo right un - til the ends of the earth

S 3 find you an - y - where you go ah

A 1 find you an - y - where you go ah

A 2 find you an - y - where you go ah

A^b C7 Fm A^b0

P.A

89 *decresc.*

S 1 get no sleep tell you when I've found you

S 2 I get no sleep till I find you to tell you when I've found you

S 3 get no sleep tell you when I've found you

A 1 get no sleep tell you when I've found you

A 2 get no sleep tell you when I've found you

E^b/G F#^{dim} Fm7

P.A

You Take My Breath Away

- Queen -

Words and Music by Freddy Mercury
Arranged by Hans Kaldewey
Original Key

Rubato

Soprano 1 *mf* oo oo

Soprano 2 *mf* oo all a - way

Soprano 3 *mf* oo all a - way

Alto 1 *mf* Take it take it all a - way

Alto 2 *mf* Take it take it all a - way

S 1 *mf* oo take my breath a - way oo

S 2 oo take my breath a - way oo

S 3 oo take my breath a - way oo

A 1 oo take my breath a - way oo

A 2 oo take my breath a - way oo

© www.ChorusOnline.com / 0031 (0) 6 - 41 57 77 56

You Take My Breath Away 3

03 SSSAA Piano Moderated

30

S 2

Ev' - ry time you make a move — you des - troy my _ mind — and the way you touch I lose con - trol

A 2

mp

Ev' - ry time you make a move — you des - troy my _ mind — and the way you touch I lose con - trol

Fm7 B \flat 7 E \flat /G G \flat 0

P.M

34

S 2

— and shi - ver deep in - side You take my breath a - way —

A 2

— and shi - ver deep in - side You take my breath a - way —

Fm7 Cm Fm6/C

P.M

38

S 2

You can re - duce me to tears — with a sin - gle sigh

Cm Fm6/C Cm Cm Fm6/C Cm Fm7/C C Fm6/C

P.M

You Take My Breath Away 5
03 SSSAA Piano Moderated

51

S 1

S 2
If you dis - miss me from your love You take my breath a - way

S 3

A 1

A 2
If you dis - miss me from your love You take my breath a - way

P.M.
G^b Fm7

55

S 1
oo

S 2
mf So please don't go don't

S 3
p oo

A 1
p oo

A 2
p oo

P.M.
Cm Fm6/C Cm Fm6/C Cm B^b A^b/B^b B⁷

You Take My Breath Away 7
03 SSSAA Piano Moderated

69

S 1 sleep tell you — that you just

S 2 — till I find — you to tell you — that you just take my breath a - way —

S 3 sleep tell you — that you just

A 1 sleep tell you — that you just

A 2 sleep tell you — that you just

P.M. G^b Fm7

73

S 1

S 2

S 3

A 1

A 2

P.M. Cm Fm6/C Cm Fm6/C Cm Cm Fm6/C

You Take My Breath Away 9
03 SSSAA Piano Moderated

85 *mf* *cresc.*

S 1 find you an - y - where you go ah

S 2 find you an - y - where you go oo right un - til the ends of the earth

S 3 find you an - y - where you go ah

A 1 find you an - y - where you go ah

A 2 find you an - y - where you go ah

P.M. *cresc.*

A^b C7 Fm A^b0

89 *decresc.*

S 1 get no sleep tell you when I've found you

S 2 I get no sleep till I find you to tell you when I've found you

S 3 get no sleep tell you when I've found you

A 1 get no sleep tell you when I've found you

A 2 get no sleep tell you when I've found you

P.M. *decresc.*

E^b/G G^b0 Fm7



04 SSSAA

You Take My Breath Away

- Queen -

Words and Music by Freddy Mercury
Arranged by Hans Kaldeway
Original Key

Rubato

Soprano 1
oo _____ oo _____

Soprano 2
mf
oo _____ all a - way _____

Soprano 3
mf
oo _____ all a - way _____

Alto 1
mf
Take it take it all a - way _____

Alto 2
mf
Take it take it all a - way _____

© www.ChorusOnline.com / 0031 (0) 6 - 41 57 77 56

You Take My Breath Away 3
04 SSSAA

14 **8** *mp*
S 2
Look in - to my eyes and you'll see I'm the on - ly one

25
S 2
You've cap-tured my love, sto - len my heart, changed my life.

30
S 2
Ev' - ry time you make a move___ you des - troy my___ mind___ and the way you touch
mp
A 2
Ev' - ry time you make a move___ you des - troy my___ mind___ and the way you touch

33
S 2
I lose con - trol___ and shi - ver deep in - side You take my breath a - way___
A 2
I lose con - trol___ and shi - ver deep in - side You take my breath a - way___

38 **2**
S 2
You can re - duce me to tears___ with a sin - gle sigh

You Take My Breath Away 5
04 SSSAA

50

S 1

S 2

S 3

A 1

A 2

I would sure - ly die ____ If you dis - miss ____ me from your love ____

I would sure - ly die ____ If you dis - miss ____ me from your love ____

54

S 1

S 2

S 3

A 1

A 2

You take my breath a - way ____ So please don't

You take my breath a - way ____

You Take My Breath Away 7
04 SSSAA

67

S 1 ah _____ get no sleep tell you_ that

S 2 _____ un - til the ends of the earth _____ I get no sleep _____ till I find you to tell you_ that

S 3 ah _____ get no sleep tell you_ that

A 1 ah _____ get no sleep tell you_ that

A 2 ah _____ get no sleep tell you_ that

71

S 1 you just **4**

S 2 you just take my breath a - way _____ **3** **3** **4**

S 3 you just **4**

A 1 you just **4**

A 2 you just **4**

You Take My Breath Away 9
04 SSSAA

87

S 1 ah _____ get no sleep

S 2 oo _____ right un - til the ends of the earth I get no sleep till I find you to

S 3 ah _____ get no sleep

A 1 ah _____ get no sleep

A 2 ah _____ get no sleep

91

S 1 *decresc.* tell you when I've found you *ppp* I love you **3**

S 2 *decresc.* tell you when I've found you *ppp* I love you **3**

S 3 *decresc.* tell you when I've found you *ppp* I love you **3**

A 1 *decresc.* tell you when I've found you *ppp* I love you **3**

A 2 *decresc.* tell you when I've found you *ppp* I love you **3**

You Take My Breath Away

- Queen -

Words and Music by Freddy Mercury
Arranged by Hans Kaldeway
Original Key

Rubato

Use the "Piano Advanced" part when
no guitar or bass guitar is available

14 Cm7 Cm7 Cm *molto espressivo* Fm6/C

con Pedale

17 Cm Fm6/C Cm Cm Fm6/C Cm Fm6/C

21 Cm Cm Fm6/C Cm Fm7/C Cm Fm6/C

© www.ChorusOnline.com / 0031 (0) 6 - 41 57 77 56



06 Piano Moderated

You Take My Breath Away

- Queen -

Words and Music by Freddy Mercury
Arranged by Hans Kaldewey
Original Key

Rubato

© www.ChorusOnline.com / 0031 (0) 6 - 41 57 77 56

You Take My Breath Away

- Queen -

*Words and Music by Freddy Mercury
Arranged by Hans Kaldeway
Original Key*

Rubato

4 3 4 20

34 24 5 6 5

75 8^{va}

Until m. 84: Play only when no guitar is available

79 (8^{va})

83 (8^{va}) (Play)

87

91 4

Drumkit/Percussion

Hi-Hat closed
Hi-Hat open
Snareclick
Bassdrum(Kick)
Snaredrum
Hi-Hat Foot
High Tom
Mid Tom
Low Tom
Floor Tom
Ride Cymbal
Ride Bell/Cup
Crash Cymbal
Splash Cymbal
Triangle mute
Tambourine Beating
Triangle open

- Shaker(eggs)
- Claves
- High Timbale
- Sleigh Bells
- Bell Tree
- Maracas
- Wind Chimes

Cowbell
Conga Cabasa
Handclap
Guro
Woodblock High
Woodblock Low
Timbale Low
Agogo High
Agogo Low



09 Drum Set

You Take My Breath Away

- Queen -

Words and Music by Freddy Mercury
Arranged by Hans Kaldeway
Original Key

Rubato

4 3 4 3 4 3 9

34 6 2 16 5 6 6 2 7

85 Cymbal mallets

89 5 4

You Take My Breath Away

- Queen -

Words and Music by Freddy Mercury
Arranged by Hans Kaldeway
Original Key

Rubato

mf

oo _____ a-way _____

6

oo _____ a-way oo _____ oo _____

11

oo take my breath a-way _____

14

molto espressivo

Cm7 Cm7 Cm Fm6/C Cm Fm6/C

18

Cm Cm Fm6/C Cm Fm6/C Cm

22

mp

Cm Fm6/C Cm Fm7/C Cm Fm6/C

Look in - to my eyes and you'll see I'm the on - ly one _____



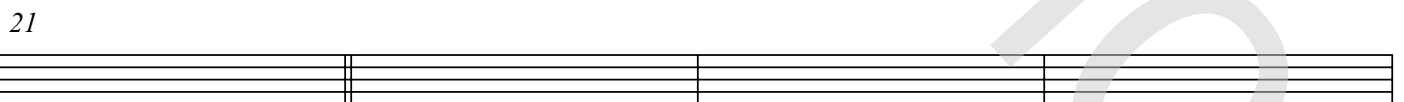
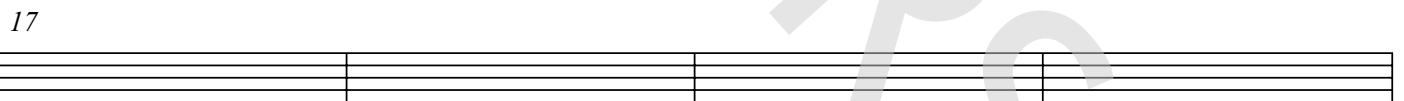
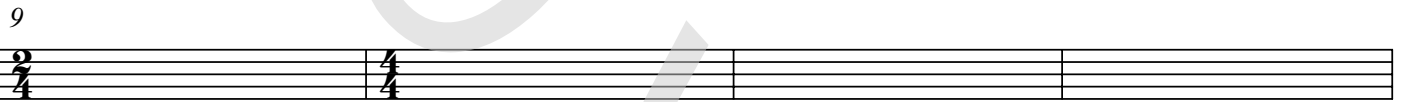
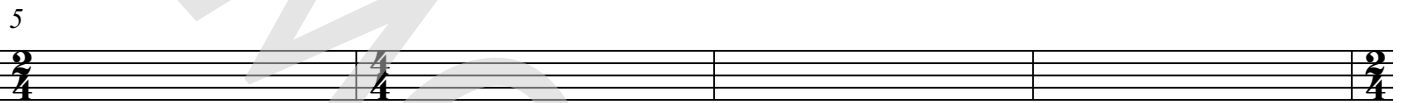
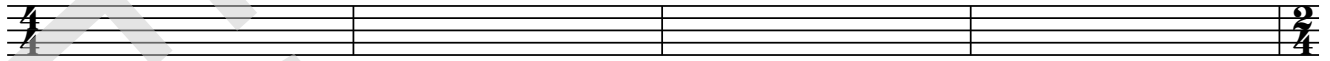
11 Empty Paper

You Take My Breath Away

- Queen -

Rubato

Words and Music by Freddy Mercury
Arranged by Hans Kaldeway
Original Key



© www.ChorusOnline.com / 0031 (0) 6 - 41 57 77 56

12 Lyrics

chorus[®]
online

You Take My Breath Away

- Queen -

*Words and Music by Freddy Mercury
Arranged by Hans Kaldeway
Original Key*

Oo...oo away, oo away oo, take my breath away

Look into my eyes and you'll see
I'm the only one
You've captured my love
Stolen my heart
Changed my life.
Ev'ry time you make a move
You destroy my mind
And the way you touch
I lose control and shiver deep inside
You take my breath away

You can reduce me to tears
With a single sigh
Ev'ry breath that you take
Any sound that you make
Is a whisper in my ear
I could give up all my life for just one kiss
I would surely die
If you dismiss me from your love
You take my breath away

So please don't go
Don't leave me here all by myself
I get ever so lonely from time to time
I will find you
Anywhere you go, I'll be right behind you
Right until the ends of the earth
I get no sleep till I find you to tell you
that you just take my breath away

I will find you... Anywhere you go, I'll be right behind you
Right until the ends of the earth
I get no sleep till I find you to tell you
When I've found you
I love you