



**Love yourself – Justin Bieber SATB**

Pag.

- 02 Full score combo
- 14 Full score combo 4 extra staves
- 29 Vocals (SATB) Piano
- 44 Vocals (SATB)
- 63 Piano
- 67 Guitar
- 69 Bassguitar
- 71 Leadsheet (melody, lyrics, chords)
- 76 Lyrics



01 SATB combo

# Love Yourself

- Justin Bieber -

Words and Music by Ed Sheeran & Justin Bieber  
Arranged by Frank de Vreeze  
Original Key E

Pop, Soul ♩ = 100

### Verse 1

Finger Snap on 2 & 4

Soprano

Alto

Tenor *mf*

Bass

For all the times \_\_\_ that you rain \_\_\_ on my pa - rade. And all the clubs \_\_\_ you get in \_\_\_ u - sing my name. You think you broke

N.C.  
(No guitar: play this piano part)

Piano

*E. Jazz Sound*  
Damp string on 2 & 4

Guitar

*pp*

Bass Guitar

Love Yourself 3  
01 SATB combo

13 *pp* *p*

S My ma - ma don't

A My ma - ma don't

T *mf* My ma - ma don't

B *mf* My ma - ma don't

mo - vin' on \_\_\_ and I think you should be some - thin' I don't wan - na hold back, may - be you should know that. My ma - ma don't

P.

Gtr.

Bass

Pre-Chorus 1

17

S like you and she likes e - ve - ry - one. \_\_\_ And I ne - ver like to ad - mit that I \_\_\_ was wrong. \_\_\_ And I've been so

A like you and she likes e - ve - ry - one. \_\_\_ And I ne - ver like to ad - mit that I \_\_\_ was wrong. \_\_\_

T like you and she likes e - ve - ry - one. \_\_\_ And I ne - ver like to ad - mit that I \_\_\_ was wrong. \_\_\_ And I've been so

B like you and she likes e - ve - ry - one. \_\_\_ And I ne - ver like to ad - mit that I \_\_\_ was wrong. \_\_\_

*C#m* *A5* *E5* *C#m* *A5* *E5*

P.

Gtr.

Bass

Love Yourself 5  
01 SATB combo

Verse 2

31

S *pp*  
you should go and love your - self. MMM

A *pp*  
you should go and love your - self. MMM

T  
you should go and love your - self. But when you told me that you ha - ted\_ my friends. The on - ly pro -

B  
you should go and love your - self. But when you told me that you ha - ted\_ my friends. The on - ly pro -

P. E5 A/b E N.C.

Gtr.

Bass

35

S  
MMM OOH

A  
MMM OOH

T  
- blem was with you and not them. And ev' - ry time\_ you told me my o - pi - nion was wrong. And tried to make

B  
- blem was with you and not them. And ev' - ry time\_ you told me my o - pi - nion was wrong. And tried to make

P.

Gtr.

Bass

Pre-Chorus 2

47

*p*

S OOH \_\_\_\_\_ My ma - ma don't like you and she likes e - ve - ry - one. \_\_\_\_\_ And I ne - ver

A OOH \_\_\_\_\_ My ma - ma don't like you and she likes e - ve - ry - one. \_\_\_\_\_ And I ne - ver

T hold back, may - be you should know that. My ma - ma don't like you and she likes e - ve - ry - one. \_\_\_\_\_ And I ne - ver

B hold back, may - be you should know that. My ma - ma don't like you and she likes e - ve - ry - one. \_\_\_\_\_ And I ne - ver

P. *C#m* *A5* *E5*

Gtr.

Bass

51

S like to ad - mit that I \_\_\_\_\_ was wrong. \_\_\_\_\_ And I've been so caught up in my job, didn't see what's go - ing on. And now I

A like to ad - mit that I \_\_\_\_\_ was wrong. \_\_\_\_\_ see what's go - ing on. And now I

T like to ad - mit that I \_\_\_\_\_ was wrong. \_\_\_\_\_ And I've been so caught up in my job, didn't see what's go - ing on. And now I

B like to ad - mit that I \_\_\_\_\_ was wrong. \_\_\_\_\_ see what's go - ing on. And now I

P. *C#m* *A5* *E5* *C#m* *A5* *E5* *B5*

Gtr.

Bass



Love Yourself 11  
01 SATB combo

Chorus 3

81

S like the way you look that \_\_\_ much Oh ba - by you should go and love your - self. And if you

A like the way you look that \_\_\_ much Oh ba - by you should go and love your - self. And if you

T like the way you look that \_\_\_ much Oh ba - by you should go and love your - self. And if you

B like the way you look that \_\_\_ much Oh ba - by you should go and love your - self. And if you

P. E5 B5 C#5 A5 E5 A/b E

Gtr.

Bass

85

S think that I'm stil hold - in' \_\_\_ on to some - thing you should go and love your - self. Cause if you

A think that I'm stil hold - in' \_\_\_ on to some - thing you should go and love your - self. Cause if you

T think that I'm stil hold - in' \_\_\_ on to some - thing you should go and love your - self. Cause if you

B think that I'm stil hold - in' \_\_\_ on to some - thing you should go and love your - self. Cause if you

P. E5 B5 C#5 A5 E5 A/b

Gtr.

Bass



Love Yourself 3  
02 SATB 4 extra staves

Pre-Chorus 1

Soprano (S): *ppp* MMM ———— *p* My ma - ma don't like you and she likes e - ve - ry - one.

Alto (A): *ppp* MMM ———— *p* My ma - ma don't like you and she likes e - ve - ry - one.

Tenor (T): *mf* phone up. And ba-by I be mo - vin' on — and I think you should be some - thin' I don't wan - na hold back, may - be you should know that. My ma - ma don't like you and she likes e - ve - ry - one.

Bass (B): *mf* phone up. And ba-by I be mo - vin' on — and I think you should be some - thin' I don't wan - na hold back, may - be you should know that. My ma - ma don't like you and she likes e - ve - ry - one.

Piano Accompaniment (P.C.): *G#m* *A5*

Guitar (Gtr.): *8*

Bass (Bass): *8*

Chorus 1

25

S like the way you look that — much Oh ba - by you should go and love your - self And if you think that I'm still hold - in' — on to some-thing you should go and love your - self

A like the way you look that — much Oh ba - by you should go and love your - self And if you think that I'm still hold - in' — on to some-thing you should go and love your - self

T like the way you look that — much Oh ba - by you should go and love your - self And if you think that I'm still hold - in' — on to some-thing you should go and love your - self

B like the way you look that — much Oh ba - by you should go and love your - self And if you think that I'm still hold - in' — on to some-thing you should go and love your - self

1

2

3

4

PC. E5 B5 C#5 A5 E5 A/b E E5 B5 C#5 A5 E5 A/b

Ch. Ctr. Bass



Love Yourself 9  
02 SATB 4 extra staves

50

S — And I ne-ver like to ad-mit that I — was wrong — And I've been so caught up in my job, didn't see what's go-ing on. And now I know, I'm bet-ter sleep-ing on my own. Cause if you

A — And I ne-ver like to ad-mit that I — was wrong — And I've been so caught up in my job, didn't see what's go-ing on. And now I know, I'm bet-ter sleep-ing on my own. Cause if you

T — And I ne-ver like to ad-mit that I — was wrong — And I've been so caught up in my job, didn't see what's go-ing on. And now I know, I'm bet-ter sleep-ing on my own. Cause if you

B — And I ne-ver like to ad-mit that I — was wrong — And I've been so caught up in my job, didn't see what's go-ing on. And now I know, I'm bet-ter sleep-ing on my own. Cause if you

1  
2  
3  
4

PC. E5 C#m A5 E5 C#m A5 E5 B5 C#m A B5

Ch. 8

Bass 8

Interlude

The image shows a musical score for an interlude section, labeled "Interlude". The score is written for SATB 4 extra staves. The vocal parts (Soprano, Alto, Tenor, Bass) are on the top four staves, and the piano accompaniment (PC) is on the bottom two staves. The key signature is one sharp (F#) and the time signature is 8/8. The score is divided into four measures, numbered 1 through 4. The piano accompaniment consists of a bass line and a treble line. The vocal parts have lyrics "M - M" written below the notes. The piano accompaniment has chord symbols written below the bass line: E, E5, B5, C#5, A5, E5, A/b, E, E5, B5, C#5, A5, E5, A/b.

Chorus 3

78

S  
- rable Was I a fool — to let you break down my walls Cause if you like the way you look that — much Oh ba - by you should go and love your - self And if you

A  
M - b Was I a fool — to let you break down my walls Cause if you like the way you look that — much Oh ba - by you should go and love your - self And if you

T  
so low Was I a fool — to let you break down my walls Cause if you like the way you look that — much Oh ba - by you should go and love your - self And if you

B  
- rable Was I a fool — to let you break down my walls Cause if you like the way you look that — much Oh ba - by you should go and love your - self And if you

1  
2  
3  
4

PC.  
E5 B5 C#5 A5 E5 A/b E

Ch.  
8

Bass  
8

Love Yourself 15  
02 SATB 4 extra staves

01

S you should go and love your self — Yeah — think that I'm still hold - in' — on to some - thing you should go and love your self —

A you should go and love your self — And if you think that I'm still hold - in' — on to some - thing you should go and love your self —

T you should go and love your self — You think That I'm — hold - in' — on — go and love your self —

B you should go and love your self — And if you think that I'm still hold - in' — on to some - thing you should go and love your self —

1

2

3

4

E5 A/b E E5 B5 C# A5 E5 A/b E5

P.C.

Chr.

Bass



03 SATB Piano Solo

# Love Yourself

- Justin Bieber -

Words and Music by Ed Sheeran & Justin Bieber  
Arranged by Frank de Vreeze  
Original Key E

Pop, Soul ♩ = 100

### Verse 1

*Finger Snap on 2 & 4*

Soprano

Alto

Tenor *mf*

Bass

Piano Solo

N.C.  
*(No guitar: play this piano part)*

For all the times \_\_\_ that you rain \_\_\_ on my pa - rade.      And all the clubs \_\_\_ you get in u - sing my name.

Love Yourself 3  
03 SATB Piano Solo

11

S *pp*

A *pp* MMM

T *pp* MMM

B don't but, you still hit my phone up. And ba-by I be mo - vin' on \_\_\_ and I think you

P.S.

14

S *p* My ma - ma don't

A *p* My ma - ma don't

T *mf* My ma - ma don't

B should be some - thin' I don't wan - na hold back, may - be you should know that. *mf* My ma - ma don't

P.S.

Chorus 1

24

S  
sleep-ing on my own. Cause if you like the way you look that much Oh ba-by you should go and love your - self.

A  
sleep-ing on my own. Cause if you like the way you look that much Oh ba-by you should go and love your - self.

T  
sleep-ing on my own. Cause if you like the way you look that much Oh ba-by you should go and love your - self.

B  
sleep-ing on my own. Cause if you like the way you look that much Oh ba-by you should go and love your - self.

P.S.  
B5 E5 B5 C#5 A5 E5 A/b

28

S  
And if you think that I'm stil hold - in'\_\_\_ on to some-thing you should go and love your - self.

A  
And if you think that I'm stil hold - in'\_\_\_ on to some-thing you should go and love your - self.

T  
And if you think that I'm stil hold - in'\_\_\_ on to some-thing you should go and love your - self.

B  
And if you think that I'm stil hold - in'\_\_\_ on to some-thing you should go and love your - self.

P.S.  
E E5 B5 C#5 A5 E5 A/b

Love Yourself 7  
03 SATB Piano Solo

38 *mf*

S OOH And I did-n't wan-na

A OOH And I did-n't wan-na

T wrong. And tried to make me for - get where I came from. And I did-n't wan-na

B wrong. And tried to make me for - get where I came from. And I did-n't wan-na

P.S.

41 *pp*

S write a song MMM MMM

A write a song *pp* MMM

T write a song cause I did - n't want a - ny - one think - ing I still care I don't but, you still hit my

B write a song cause I did - n't want a - ny - one think - ing I still care I don't but, you still hit my

P.S.

Love Yourself 9  
03 SATB Piano Solo

50

S  
— And I ne-ver like to ad-mit that I — was wrong. — And I've been so

A  
— And I ne-ver like to ad-mit that I — was wrong. —

T  
8  
— And I ne-ver like to ad-mit that I — was wrong. — And I've been so

B  
— And I ne-ver like to ad-mit that I — was wrong. —

E5 C#m A5 E5

P.S.

53

S  
caught up in my job, didn't see what's go-ing on. And now I know, I'm bet-ter sleep-ing on my own. Cause if you

A  
— see what's go-ing on. And now I know, I'm bet-ter sleep-ing on my own. Cause if you

T  
8  
caught up in my job, didn't see what's go-ing on. And now I know, I'm bet-ter sleep-ing on my own. Cause if you

B  
— see what's go-ing on. And now I know, I'm bet-ter sleep-ing on my own. Cause if you

C#m A5 E5 B5 C#m A B5

P.S.

Interlude

65

S

A

T

B

P.S.

M - M

M - M

M M M M M M M M M M M - M

M M M M M M M M M M M - M

E5 B5 C#5 A5 E5 A/b E

69

S

A

T

B

P.S.

M M M M M M M M M M M

M M M M M M M M M M M

M M M M M M M M M M M

M M M M M M M M M M M

E5 B5 C#5 A5 E5 A/b

78

S  
- rable. Was I a fool — to let you — break down my walls. Cause if you

A  
M - b Was I a fool — to let you break down my walls. Cause if you

T  
8  
so low Was I a fool — to let you break down my walls. Cause if you

B  
- rable. Was I a fool — to let you — break down my walls. Cause if you

P.S.

Chorus 3

81

S  
like the way you look that — much Oh ba - by you should go and love your - self.

A  
like the way you look that — much Oh ba - by you should go and love your - self.

T  
8  
like the way you look that — much Oh ba - by you should go and love your - self.

B  
like the way you look that — much Oh ba - by you should go and love your - self.

P.S.  
E5 B5 C#5 A5 E5 A/b



04 SATB

# Love Yourself

- Justin Bieber -

Words and Music by Ed Sheeran & Justin Bieber

Arranged by Frank de Vreeze

Original Key E

Pop, Soul ♩ = 100

## Verse 1

Tenor *mf*

For all the times \_\_\_ that you rain \_\_\_ on my pa -

T *mf*

rade. And all the clubs \_\_\_ you get in \_\_\_ u - sing my name.

T *mf*

You think you broke \_\_\_ my heart oh girl for good - ness

B *pp*

MMM \_\_\_\_\_

T *mf*

\_\_\_ sake. You think I'm cry - ing, oh my oh, well I ain't.

B *pp*

MMM \_\_\_\_\_

12

S *pp*

A *pp*

T

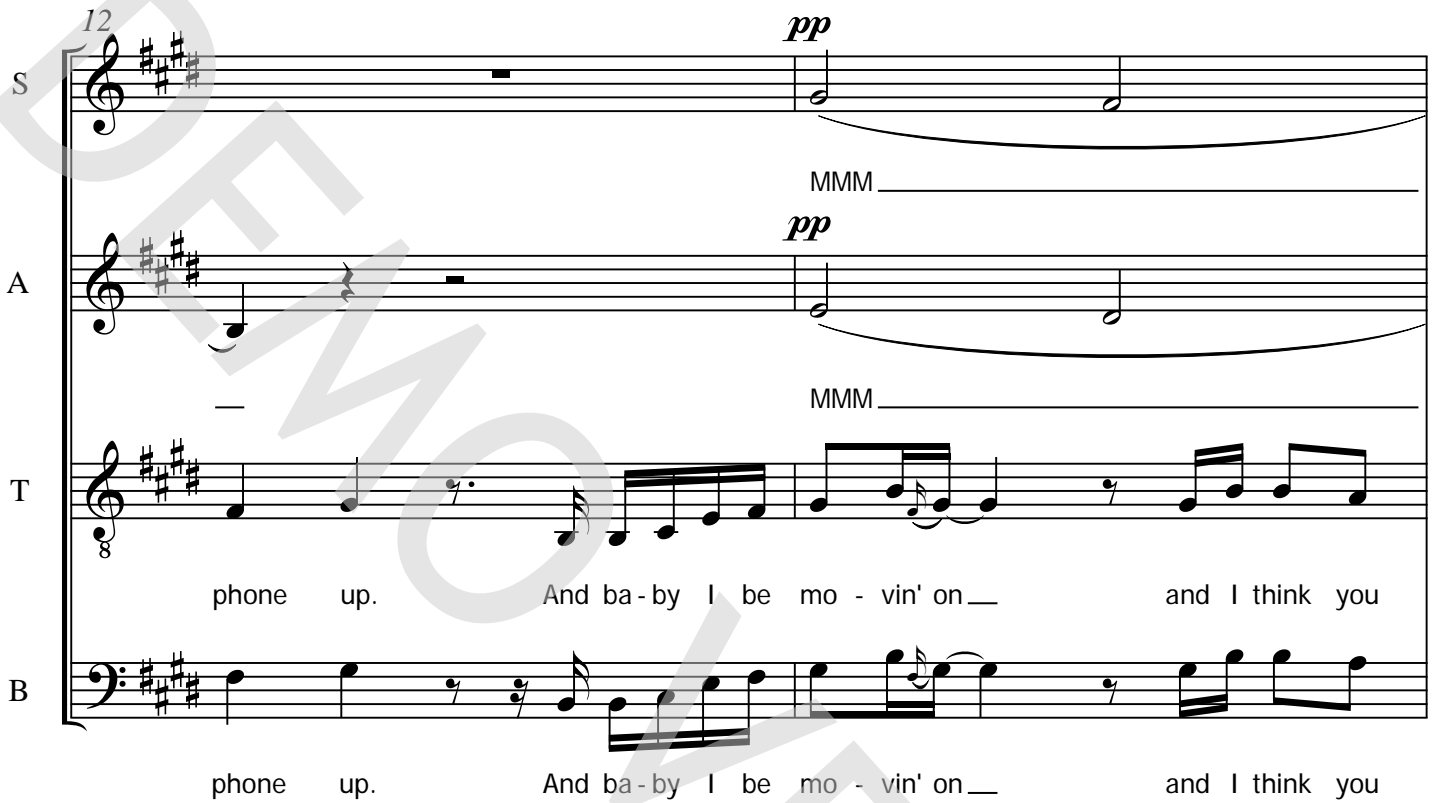
B

phone up. And ba-by I be mo - vin' on\_\_ and I think you

phone up. And ba-by I be mo - vin' on\_\_ and I think you

MMM

MMM



14

S

A

T

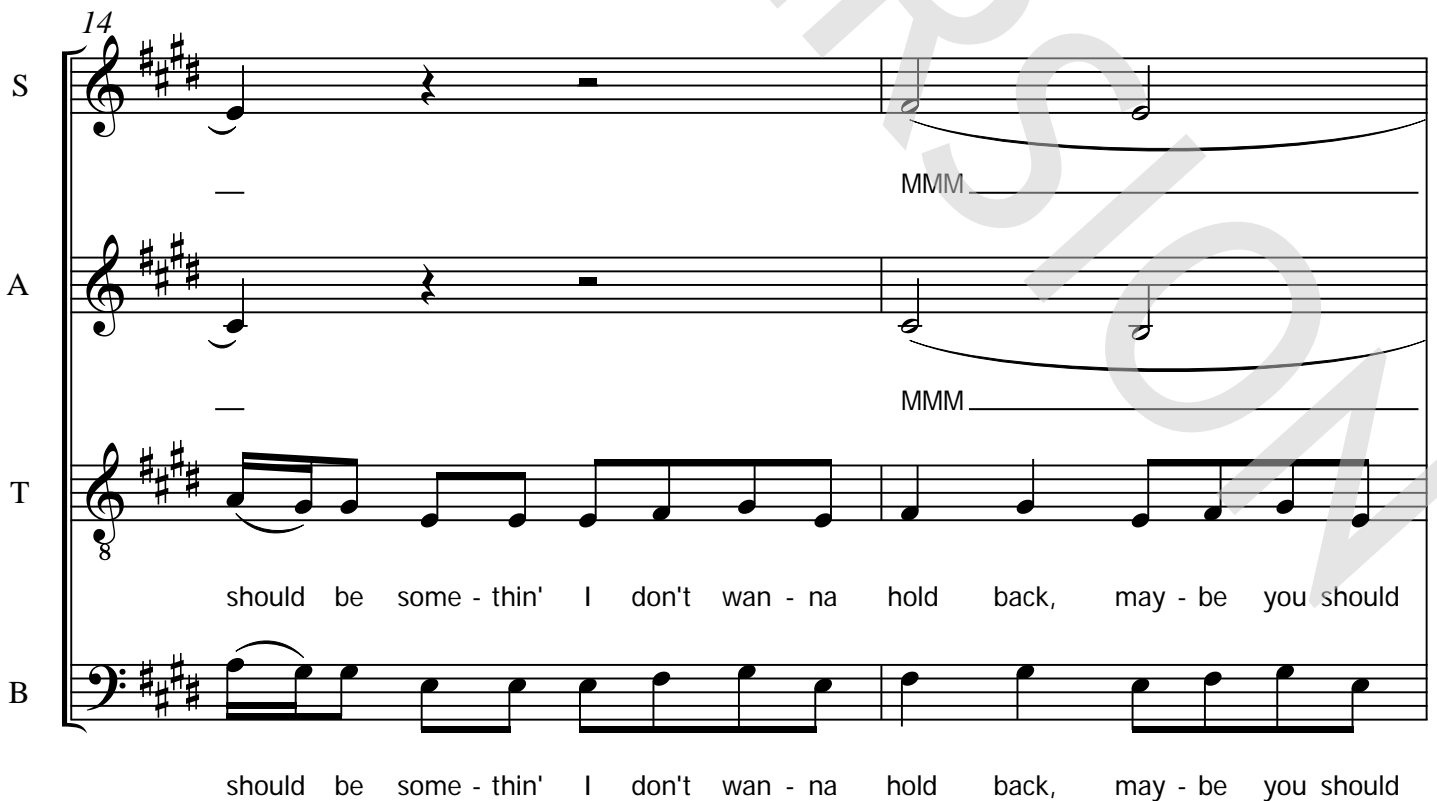
B

should be some - thin' I don't wan - na hold back, may - be you should

should be some - thin' I don't wan - na hold back, may - be you should

MMM

MMM



21

S  
caught up in my job, didn't see what's go-ing on. And now I know, I'm bet-ter

A  
see what's go-ing on. And now I know, I'm bet-ter

T  
8  
caught up in my job, didn't see what's go-ing on. And now I know, I'm bet-ter

B  
see what's go-ing on. And now I know, I'm bet-ter

*Chorus 1*

24

S  
sleep-ing on my own. Cause if you like the way you look that much Oh ba-by

A  
sleep-ing on my own. Cause if you like the way you look that much Oh ba-by

T  
8  
sleep-ing on my own. Cause if you like the way you look that much Oh ba-by

B  
sleep-ing on my own. Cause if you like the way you look that much Oh ba-by

Verse 2

33 *pp*

S

A

T

B

me that you ha - ted\_ my friends. The on - ly pro -

me that you ha - ted\_ my friends. The on - ly pro -

MMM

MMM

Detailed description: This block contains the musical notation for measures 33 and 34 of Verse 2. It features four staves: Soprano (S), Alto (A), Tenor (T), and Bass (B). The Soprano and Alto parts have a long note with a slur and a fermata, marked with a piano-piano (*pp*) dynamic. The Tenor and Bass parts have a melodic line with lyrics. The lyrics are: "me that you ha - ted\_ my friends. The on - ly pro -". There are also markings for "MMM" on the Soprano and Alto staves.

35

S

A

T

B

- blem was with you and not them. And ev' - ry time

- blem was with you and not them. And ev' - ry time

MMM

MMM

Detailed description: This block contains the musical notation for measures 35 and 36 of Verse 2. It features four staves: Soprano (S), Alto (A), Tenor (T), and Bass (B). The Soprano and Alto parts have a long note with a slur and a fermata, marked with a mezzo-mezzo (*MMM*) dynamic. The Tenor and Bass parts have a melodic line with lyrics. The lyrics are: "- blem was with you and not them. And ev' - ry time". There are also markings for "MMM" on the Soprano and Alto staves.

41 *pp*

S write a song MMM

A write a song MMM

T write a song cause I did-n't want a-ny-one think-ing I still care I

B write a song cause I did-n't want a-ny-one think-ing I still care I

43 *mf*

S MMM And ba-by I be

A MMM And ba-by I be

T don't but, you still hit my phone up. And ba-by I be

B don't but, you still hit my phone up. And ba-by I be

Pre-Chorus 2

49

S  
like you and she likes e - ve - ry - one. \_\_\_ And I ne - ver

A  
like you and she likes e - ve - ry - one. \_\_\_ And I ne - ver

T  
8  
like you and she likes e - ve - ry - one. \_\_\_ And I ne - ver

B  
like you and she likes e - ve - ry - one. \_\_\_ And I ne - ver

51

S  
like to ad - mit that I \_\_\_ was wrong. \_\_\_ And I've been so

A  
like to ad - mit that I \_\_\_ was wrong. \_\_\_

T  
8  
like to ad - mit that I \_\_\_ was wrong. \_\_\_ And I've been so

B  
like to ad - mit that I \_\_\_ was wrong. \_\_\_

59

S  
you should go and love your - self. And if you think that I'm stil

A  
you should go and love your - self. And if you think that I'm stil

T  
you should go and love your - self. And if you think that I'm stil

B  
you should go and love your - self. And if you think that I'm stil

62

S  
hold-in'\_\_\_ on to some-thing you should go and love your - self.

A  
hold-in'\_\_\_ on to some-thing you should go and love your - self.

T  
hold-in'\_\_\_ on to some-thing you should go and love your - self. M - M

B  
hold-in'\_\_\_ on to some-thing you should go and love your - self. M - M

Verse 3

71

S  
— M — M — M — M M For all the times that you made me — feel

A  
— M — M — M — M M M - b M - b

T  
— M — M — M — M M For all the times you made me

B  
— M — M — M — M M For all the times that you made me — feel

74

S  
small. I fell in love — now I feel no - thing at all.

A  
M - b M - b M - b

T  
feel small Now I feel — no - thing

B  
small. I fell in love — now I feel no - thing at all.

Chorus 3

80

S Cause if you like the way you look that\_ much Oh ba - by

A Cause if you like the way you look that\_ much Oh ba - by

T Cause if you like the way you look that\_ much Oh ba - by

B Cause if you like the way you look that\_ much Oh ba - by

83

S you should go and love your - self. And if you think that I'm stil

A you should go and love your - self. And if you think that I'm stil

T you should go and love your - self. And if you think that I'm stil

B you should go and love your - self. And if you think that I'm stil

92

S  
Yeah \_\_\_\_\_ think that I'm stil

A  
And if you think that I'm stil

T  
8  
You think That I'm \_\_\_\_\_

B  
And if you think that I'm stil

94

S  
hold - in' \_\_\_\_\_ on to some-thing you should go and love your - self. \_\_\_\_\_

A  
hold - in' \_\_\_\_\_ on to some-thing you should go and love your - self.

T  
8  
hold - in' on \_\_\_\_\_ go and love your - self. \_\_\_\_\_

B  
hold - in' \_\_\_\_\_ on to some-thing you should go and love your - self.



05 Piano

# Love Yourself

- Justin Bieber -

Words and Music by Ed Sheeran & Justin Bieber  
Arranged by Frank de Vreeze  
Original Key E

Pop, Soul ♩ = 100

## Verse 1

N.C.

(No guitar: play this piano part)

Musical notation for the first system of Verse 1, measures 1-4. The key signature is E major (three sharps) and the time signature is 4/4. The notation is for piano, with treble and bass staves.

Musical notation for the second system of Verse 1, measures 5-10. The notation continues with treble and bass staves.

Musical notation for the third system of Verse 1, measures 11-16. The notation continues with treble and bass staves.

## Pre-Chorus 1

C#m

A5

E5

C#m

A5

E5

Musical notation for the first system of Pre-Chorus 1, measures 17-20. The notation includes chord symbols above the treble staff and continues with treble and bass staves.

© www.ChorusOnline.com / 0031 (0) 6 - 41 57 77 56



06 Guitar

# Love Yourself

- Justin Bieber -

Words and Music by Ed Sheeran & Justin Bieber  
Arranged by Frank de Vreeze  
Original Key E

Pop, Soul ♩ = 100

### Verse 1

*E. Jazz Sound* N.C. Damp string on 2 & 4

### Pre-Chorus 1

C#m A5 E5 C#m A5 E5 C#m A5 E5 B5

### Chorus 1

C#m A<sup>add2</sup> B5 E5 B5 C#5 A5 E5 A/b E

### Verse 2

E5 B5 C#5 A5 E5 A/b E N.C.



07 Bass Guitar

# Love Yourself

- Justin Bieber -

Words and Music by Ed Sheeran & Justin Bieber  
Arranged by Frank de Vreeze  
Original Key E

Pop, Soul ♩ = 100

### Verse 1

N.C.

*pp*



### Pre-Chorus 1

C#m

A5

E5

C#m

A5

E5

C#m

A5



### Chorus 1

E5

B5

C#m

A<sup>add2</sup>

B5

E5

B5

C#5

A5



E5

A/b

E

E5

B5

C#5

A5

E5

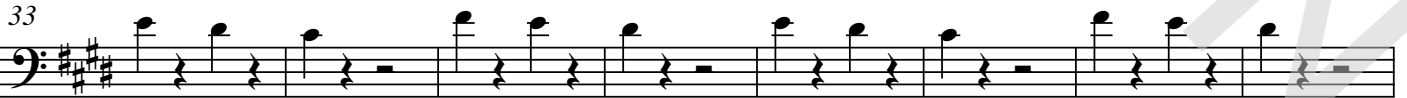
A/b

E



### Verse 2

N.C.



© www.ChorusOnline.com / 0031 (0) 6 - 41 57 77 56

# Love Yourself

- Justin Bieber -

Pop, Soul  $\text{♩} = 100$

Words and Music by Ed Sheeran & Justin Bieber  
Arranged by Frank de Vreeze  
Original Key E

## Verse 1

B/d#

C#m



For all the times \_\_\_ that you rain \_\_\_ on my pa - rade. And all the clubs

F#m

E

B/d#

E

B/d#



\_\_\_ you get in u-sing my name. You think you broke \_\_\_ my heart oh girl for good-ness

C#m

F#m

E

B/d#



\_\_\_ sake. You think I'm cry - ing, oh my oh, well I ain't. And I did-n't wan-na

E

B/d#

C#m

F#m

E



write a song cause I did-n't want a - ny-one think-ing I still care I don't but, you still hit my

B/d#

E

B/d#



phone up. And ba - by I be mo - vin' on \_\_\_ and I think you

C#m

F#m

E

B/d#

*mf*



should be some-thin' I don't wan-na hold back, may-be you should know that. My ma - ma don't



09 Lyrics

# Love Yourself

- Justin Bieber -

*Words and Music by Ed Sheeran & Justin Bieber*

*Arranged by Frank de Vreeze*

*Original Key E*

## Verse 1

For all the times that you rain on my parade  
And all the clubs you get in using my name  
You think you broke my heart, oh girl for goodness sake  
You think I'm crying, oh my oh, well I ain't

And I didn't wanna write a song cause I didn't want anyone thinking I still care  
I don't but, you still hit my phone up  
And baby I be movin' on and I think you should be somethin'  
I don't wanna hold back, maybe you should know that

## Pre-Chorus 1

My mama don't like you and she likes everyone  
And I never like to admit that I was wrong  
And I've been so caught up in my job, didn't see what's going on  
And now I know, I'm better sleeping on my own

## Chorus 1

Cause if you like the way you look that much  
Oh baby you should go and love yourself  
And if you think that I'm still holdin' on to somethin'  
You should go and love yourself

## Verse 2

But when you told me that you hated my friends  
The only problem was with you and not them  
And every time you told me my opinion was wrong  
And tried to make me forget where I came from

And I didn't wanna write a song cause I didn't want anyone thinking I still care  
I don't but, you still hit my phone up  
And baby I be movin' on and I think you should be somethin'  
I don't wanna hold back, maybe you should know that

## Pre-Chorus 2

Chorus 2  
Interlude  
M, M, M etc

## Verse 3

For all the times you made me feel small  
I fell in love, now I fear nothin' at all  
I never felt so low when I was vulnerable  
Was I a fool to let you break down my walls?

## Chorus 3

## Chorus 4