



Pompeii – Bastille Chorus-LIGHT (SAB)

Pag.

02	Full score combo C instrument
10	Full score combo Bb instrument
18	Full score combo Eb instrument
26	Full score combo 4 extra staves
38	Full score small combo
48	Full score small combo 2 extra staves
63	Full score vocals (Chorus-LIGHT SAB) piano advanced
72	Full score vocals (Chorus-LIGHT SAB) piano moderated
80	Vocals (Chorus-LIGHT SAB)
87	C instrument
89	Bb instrument
91	Eb instrument
93	Piano Combo
96	Piano Solo Advanced
100	Piano Solo Intermediate
104	Synthesizer
108	Guitar
110	Bassguitar
112	Drumkit
115	Percussion
118	Leadsheet (melody, lyrics, chords)
122	Lyrics



Chorus-LIGHT Combo C

Pompeii

- Bastille -

Words and Music by Dan Smith
Arranged by Hans Reintjes
Original Key A major

DEMO

VERS

Pop/Rock $\text{♩} = 128$

A

B

HIGH

MID

LOW

C Instr.

Piano Combo

Synthesizer

Guitar

Bass Guitar

Drums

Percussion

Eh... eh oh e - oh, eh

Eh... eh oh e - oh, eh

Eh... eh oh e - oh, eh

D A F#m E D A F#m E D

No synth, or guitar play small notes

Warm pad (legato)

Sawtooth (staccato)

El. Guitar (distortion muted)

© www.ChorusOnline.com / 0031 (0) 6 - 41 57 77 56

Pompeii 5

Chorus-LIGHT Combo C

[H]

58

H
Ah a - bove. But if you close your eyes, does it al - most feel like no - thing changed at all.

M
Ah from a - bove. But if you close your eyes, does it al - most feel like no - thing changed at all.

L
clouds roll o - ver the hills bring - ing dark - ness from a - bove. Eh oh e - oh, eh eh oh e - oh, eh eh oh e - oh, eh

C
D A F#m D A F#m

P.C.

Synth
Synth. Strings (legato)
Sawtooth (staccato)

Gtr.
D5 A5 F#5
El. Guitar (distortion)

Bass

Dr.
Cowbell

Perc.

66

H
_ And if you close your eyes, does it al - most feel like you've been here be - fore. Ah

M
_ And if you close your eyes, does it al - most feel like you've been here be - fore. Ah

L
_ eh oh e - oh. Eh eh oh e - oh, eh eh oh e - oh, eh eh oh e - oh, eh eh oh How am I gon - na be an op - ti - mist a - bout this? How am

C
E D A F#m E D A E

P.C.

Synth

Gtr.
E5 D5 A5 F#5 E5 D5 A5 E5 N.C.

Bass

Dr.

Perc.
Handclap

Pompeii 7

Chorus-LIGHT Combo C

J

97

H
— were do we be - gin? — The rub - ble or — our sins? — But if you close your eyes, — does it al - most feel — like no -

M
— were do we be - gin? — The rub - ble or — our sins? — But if you close your eyes, — does it al - most feel like no -

L
clouds roll o - ver the — hills bring - ing dark - ness from a - bove. — Eh oh e - oh, eh — eh oh e - oh, eh

C
D A A/g# F#m E D A

P.C.

Synth
Synth. Strings (legato)
Sawtooth (staccato)

Gtr.
D5 A5

Bass

Dr.

Perc.

98

H
- thing changed at all. — And if you close your eyes, — does it al - most feel — like you've — been here be - fore. — Oh, — how am I gon - na be an op - ti - mist a - bout

M
- thing changed at all. — And if you close your eyes, — does it al - most feel like you've — been here be - fore. — Ah, —

L
— eh oh e - oh, eh — eh oh e - oh. Eh — eh oh e - oh, eh — eh oh e - oh, eh — eh oh e - oh, eh — eh oh Oh, — how am I gon - na be an op - ti - mist a - bout

C
F#m E D A F#m E D A

P.C.

Synth

Gtr.
F#5 E5 D5 A5 F#5 E5 D5 A5

Bass

Dr.

Perc.
Handclap



Chorus-LIGHT Combo Bb

Pompeii

- Bastille -

Words and Music by Dan Smith
Arranged by Hans Reintjes
Original Key A major

DEMO

VERS

Pop/Rock ♩ = 128

A

B

HIGH

MID

LOW

Bb Instr.

Piano Combo

Synthesizer

Guitar

Bass Guitar

Drums

Percussion

D A F#m E D A F#m E D

No synth, or guitar play small notes

(staccato)

Warm pad (legato)

Sawtooth (staccato)

El. Guitar (distortion muted)

8th

© www.ChorusOnline.com / 0031 (0) 6 - 41 57 77 56

Pompeii 3

Chorus-LIGHT Combo Bb

E

27

H love. Ah. bove. But if you close your eyes, does it al -

M love. Ah. bove. But if you close your eyes, does it al -

L love. Grey clouds roll o - ver the hills bring - ing dark - ness from a - bove. Eh oh e - oh, eh

Bb

P.C. F#m E D A F#m E D

Synth. Synth. Strings (legato)

Gtr. D5 El. Guitar (distortion)

Bass

Dr.

Perc. Cowbell

35

H - most feel like no - thing changed at all. And if you close your eyes, does it al - most feel like you've been here be - fore. Ah.

M - most feel like no - thing changed at all. And if you close your eyes, does it al - most feel like you've been here be - fore. Ah.

L - eh oh e - oh, eh - eh oh e - oh, eh - eh oh e - oh. Eh - eh oh e - oh, eh - eh oh e - oh, eh - eh oh e - oh, eh - eh oh How am I gon - na be an op - ti - mist a - bout

Bb

P.C. A F#m E D A F#m E D A

Synth.

Gtr. A5 F#5 E5 D5 A5 F#5 E5 D5 A5

Bass

Dr.

Perc. Handclap

Pompeii 5
Chorus-LIGHT Combo Bb

[H]

59

H
a - bove. But if you close your eyes, does it al - most feel like no - thing changed at all. And if you close your eyes,

M
from a - bove. But if you close your eyes, does it al - most feel like no - thing changed at all. And if you close your eyes,

L
hills bring-ing dark-ness from a - bove. Eh oh e - oh, eh eh oh e - oh, eh eh oh e - oh, eh eh oh e - oh. Eh

Bb

P.C.
A F#m D A F#m E

Synth
Synth. Strings (legato)
Sawtooth (staccato)

Gtr.
D5 A5 F#5 E5
El. Guitar (distortion)

Bass

Dr.

Perc.

67

H
does it al - most feel like you've been here be-fore. Ah. Ah.

M
does it al - most feel like you've been here be-fore. Ah. Ah.

L
eh oh e - oh, eh eh oh e - oh, eh eh oh e - oh, eh eh oh How am I gon-na be an op - ti-mist a-bout this? How am I gon-na be an op - ti-mist a-bout

Bb

P.C.
D A F#m E D A E D A

Synth

Gtr.
D5 A5 F#5 E5 D5 A5 E5 N.C. D5 A5

Bass

Dr.

Perc.
Handclap

Pompeii 7
Chorus-LIGHT Combo Bb

J

92

H
The rub - ble or our sins? But if you close your eyes, does it al - most feel like no - thing changed at all. And if you close your eyes,

M
The rub - ble or our sins? But if you close your eyes, does it al - most feel like no - thing changed at all. And if you close your eyes,

L
hills bring - ing dark - ness from a - bove. Eh oh e - oh, eh eh oh e - oh, eh eh oh e - oh, eh eh oh e - oh. Eh

Bb

P.C.
A A/g# F#m E D A F#m E

Synth
Synth. Strings (legato)
Sawtooth (staccato)

Gtr.
D5 A5 F#5 E5

Bass

Dr.

Perc.

100

H
does it al - most feel like you've been here be - fore. Oh, how am I gon - na be an op - ti - mist a - bout this? How am

M
does it al - most feel like you've been here be - fore. Ah

L
eh oh e - oh, eh eh oh e - oh, eh eh oh e - oh, eh eh oh Oh, how am I gon - na be an op - ti - mist a - bout this? How am

Bb

P.C.
D A F#m E D A E

Synth

Gtr.
D5 A5 F#5 E5 D5 A5 E5 N.C.

Bass

Dr.

Perc.
Handclap



Chorus-LIGHT Combo Eb

Pompeii

- Bastille -

Words and Music by Dan Smith
Arranged by Hans Reintjes
Original Key A major

DEMO

DEMO

Pop/Rock ♩ = 128

A

B

HIGH

MID

LOW

Eb Instr.

Piano Combo

Synthesizer

Guitar

Bass Guitar

Drums

Percussion

D A F#m E D A F#m E D

No synth. or guitar play small notes

Warm pad (legato)

Sawtooth (staccato)

El. Guitar (distortion muted)

Eh — eh oh e - oh, eh

Eh — eh oh e - oh, eh

Eh — eh oh e - oh, eh

Eh — eh oh e - oh, eh

© www.ChorusOnline.com / 0031 (0) 6 - 41 57 77 56

Pompeii 3

Chorus-LIGHT Combo Eb

27

H
love. Ah bove. But if you close your eyes,

M
love. Ah bove. But if you close your eyes,

L
love. Grey clouds roll o-ver the hills bring-ing dark-ness from a-bove.

Eb

P.C.
F#m E D A F#m E

Synth

Gtr.

Bass

Dr.

Perc.

E

34

H
— does it al-most feel like no-thing changed at all. And if you close your eyes, — does it al-most feel like you've been here be-fore. —

M
— does it al-most feel like no-thing changed at all. And if you close your eyes, — does it al-most feel like you've been here be-fore. —

L
Eh oh e-oh, eh eh oh e-oh, eh eh oh e-oh, eh eh oh e-oh. Eh eh oh e-oh, eh eh oh e-oh, eh eh oh e-oh, eh eh oh How am

Eb

P.C.
D A F#m E D A F#m E

Synth
Synth. Strings (legato)

Gtr.
D5 A5 F#5 E5 D5 A5 F#5 E5
El. Guitar (distortion)

Bass

Dr.

Perc.
Cowbell

Pompeii 7

Chorus-LIGHT Combo Eb

J

89

H
- ble or our sins? oh were do we be gin? The rub - ble or our sins? But if you close your eyes, does it al -

M
- ble or our sins? oh were do we be gin? The rub - ble or our sins? But if you close your eyes, does it al -

L
love. Grey clouds roll o - ver the hills bring - ing dark - ness from a - bove. Eh oh e - oh, eh

Eb

P.C.
F#m E sus4 E D A A/g# F#m E D

Synth
Synth. Strings (legato)
Sawtooth (staccato)

Gtr.

Bass

Dr.

Perc.

97

H
- most feel like no - thing changed at all. And if you close your eyes, does it al - most feel like you've been here be - fore. Oh, how am

M
- most feel like no - thing changed at all. And if you close your eyes, does it al - most feel like you've been here be - fore.

L
eh oh e - oh, eh eh oh e - oh, eh eh oh e - oh. Eh eh oh e - oh, eh eh oh e - oh, eh eh oh e - oh, eh eh oh Oh, how am

Eb

P.C.
A F#m E D A F#m E

Synth

Gtr.
A5 F#5 E5 D5 A5 F#5 E5

Bass

Dr.

Perc.

Chorus-LIGHT 4 extra staves

Pompeii

- Bastille -

Words and Music by Dan Smith
Arranged by Hans Reinijes
Original Key A major

Pop/Rock $\text{♩} = 128$

A

B

HIGH $\text{♩} = 128$
 MIDDLE $\text{♩} = 128$
 LOW $\text{♩} = 128$

1
 2
 3
 4

D *My love is your love*
 A
 F#m
 E
 D
 A
 F#m
 E
 D
 A
 F#m
 E
 D

Piano Combo
 Warm pad (legato)
 Synthesizer
 Warm pad (legato)
 Synthesizer (staccato)
 Gtr. (Guitar) (distortion muted)

Guitar
 Bass Guitar
 Drums
 Percussion

Eh—eh oh e-oh, eh—eh oh e-oh, eh—eh oh e-oh, eh—eh oh e-oh, Eh—eh oh e-oh, eh
 Eh—eh oh e-oh, eh—eh oh e-oh, eh—eh oh e-oh, eh—eh oh e-oh, Eh—eh oh e-oh, eh
 Eh—eh oh e-oh, eh—eh oh e-oh, eh—eh oh e-oh, eh—eh oh e-oh, Eh—eh oh e-oh, eh

Pompeii 3
Chorus-LIGHT 4 extra staves

D

24

H Ah ————— love —————

M Ah ————— love —————

L ————— And the walls kept tum-b-ling down ————— In the ci - ty that we love ————— Grey clouds roll o - ver the hills ————— bring-ing dark-ness from a - bove —————

1

2

3

4

R.C. E D A F#m E D A F#m E

Synth Polysynth

Dr. (on rim) Handclap

Bass

Gtr.

Perc.

Pompeii 5

Chorus-LIGHT 4 extra staves

F

42

H Ah _____ Ah _____

M Ah _____ Ah _____

L I gon-na be an op - ti-mist a-bout _____ this? How am I gon-na be an op - ti-mist a-bout _____ this? We were caught up and lost _____ In all _____ of our vi - ces. In your pose _____ as the dust _____

1
2
3
4

R.C. D A E D A E D A F#m E D A

Synth D5 A5 E5 N.C. D5 A5 E5 N.C. *Warm pad (legato)* *Sawtooth (non-legato)* *El Guitur (distortion muted)*

Chr. *Handclap*

Bass *Handclap*

Dr. *Handclap*

Perc. *Handclap*

Pompeii 9
Chorus-LIGHT 4 extra staves

80

H
oh — were do we — be-gin? — The rub - ble or — our sins? — oh were do we — be - gin? — oh — were do we — be - gin?

M
The rub - ble or — our sins? — oh — were do we — be-gin? — The rub - ble or — our sins? — oh were do we — be - gin? — The rub - ble or — our sins? — oh — were do we — be - gin?

L
— Oh, oh — were do we — be-gin? — The rub - ble or — our sins? — And the walls kept turn-b-ling down — in the ci-ty that we love — Grey clouds roll o-ver the —

1
2
3
4

R.C.
A A/g# F#m E sus4 E D A A/g# F#m E sus4 E D A A/g# F#m E sus4 E D

Synth
[Musical notation for Synth part]

Gtr.
[Musical notation for Guitar part]

Bass
[Musical notation for Bass part]

Dr.
[Musical notation for Drums part]

Perc.
[Musical notation for Percussion part]

Pompeii 11

Chorus-LIGHT 4 extra staves

K

102

H — been here be-fore — Oh, — how am I gon-na be an op - ti-mist a-bout — this? How am I gon-na be an op - ti-mist a-bout — this? If you close your eyes, — does it all - most feel — like no -

M — been here be-fore — Ah — — — — — Ah — — — — — If you close your eyes, — does it all - most feel — like no -

L — eh oh e - oh, eh — eh oh Oh, — how am I gon-na be an op - ti-mist a-bout — this? How am I gon-na be an op - ti-mist a-bout — this? If you close your eyes, — e - oh, eh — eh oh e - oh, eh

1
2
3
4

R.C. F#m E D A E D A E D A E D A

Synth F#5 E5 D5 A5 E5 N.C. D5 A5 E5 N.C. D5 A5

Gtr. F#5 E5 D5 A5 E5 N.C. D5 A5 E5 N.C. D5 A5

Bass

Dr. Handclap Cowbell

Perc.



Chorus-LIGHT small Combo

Pompeii

- Bastille -

Words and Music by Dan Smith
Arranged by Hans Reintjes
Original Key A major

Pop/Rock ♩ = 128

A

HIGH

MID

LOW

Piano Combo

Guitar

Bass Guitar

Drums

Percussion

D A F#m E D A F#m

No synth, or guitar play small notes

El. Guitar (distortion muted)

8th

B

H

M

L

P.C.

Gtr.

Bass

Dr.

Perc.

E D A F#m E D A

Eh__eh oh e-oh, eh__eh oh e-oh, eh__eh oh e-oh, eh__eh oh e-oh. Eh__eh oh e-oh, eh__eh oh e-oh, eh

Eh__eh oh e-oh, eh__eh oh e-oh, eh__eh oh e-oh, eh__eh oh e-oh. Eh__eh oh e-oh, eh__eh oh e-oh, eh

Eh__eh oh e-oh, eh__eh oh e-oh, eh__eh oh e-oh, eh__eh oh e-oh. Eh__eh oh e-oh, eh__eh oh e-oh, eh

© www.ChorusOnline.com / 0031 (0) 6 - 41 57 77 56



27

H
love. Ah bove.

M
love. Ah bove.

L
love. Grey clouds roll o-ver the hills bring-ing dark-ness from a - bove.

P.C.
F#m E D A F#m E

Gtr.

Bass

Dr.

Perc.

33

H
But if you close your eyes, does it al - most feel like no - thing changed at all. And if you close your eyes, does it al -

M
But if you close your eyes, does it al - most feel like no - thing changed at all. And if you close your eyes, does it al -

L
Eh oh e - oh, eh eh oh e - oh, eh eh oh e - oh, eh eh oh e - oh, Eh eh oh e - oh, eh

P.C.
D A F#m E D

Gtr.
El. Guitar (distortion) D5 A5 F#5 E5 D5

Bass

Dr.
Cowbell

Perc.

50 *Handclap* G

H Ah _____ that we

M In your pose _____ as the dust _____ set - tled _____ a - round _____ us. _____ Ah _____ that we

L In your pose _____ as the dust _____ set - tled _____ a - round _____ us. _____ And the walls kept tum - b - ling down _____ in the ci - ty that we

P.C. *D A F#m E D A*

Gtr. *El. Guitar (distortion muted)*

Bass

Dr.

Perc.

56

H love. _____ Ah _____ a - bove. _____

M love. _____ Ah _____ from a - bove. _____

L love. _____ Grey clouds roll o - ver the _____ hills bring - ing dark - ness from a - bove. _____

P.C. *F#m E D A F#m*

Gtr.

Bass

Dr. *Cowbell*

Perc.

72

H
Ah. _____ Eh oh e - oh, eh _____ eh oh e - oh, eh _____ eh oh e - oh, eh

M
Ah. _____ Eh oh e - oh, eh _____ eh oh e - oh, eh _____ eh oh e - oh, eh

L
_ this? How am I gon-na be an op - ti-mist a-bout _____ this? _____ Eh oh e - oh, eh _____ eh oh e - oh, eh _____ eh oh e - oh, eh

P.C.
E D A E D A F#^m

Gtr.
E₅ N.C. D₅ A₅ E₅ N.C. D₅ A₅ F#₅

Bass

Dr.

Perc.
Cowbell

I

78

H
_ eh oh e - oh. _____ oh _____ were do we _____ be - gin? _____ The rub -

M
_ eh oh e - oh. _____ The rub - ble or _____ our sins? _____ oh _____ were do we _____ be - gin? _____ The rub -

L
_ eh oh e - oh. Oh were do we _____ be - gin? _____ Oh, oh _____ were do we _____ be - gin? _____ The rub -

P.C.
E D A A/g# F#^m E^{sus4} E D A A/g#

Gtr.
E₅

Bass

Dr.

Perc.

J

96

H
— does it al - most feel like no - thing changed at all. And if you close your eyes, — does it al - most feel like you've

M
— does it al - most feel like no - thing changed at all. And if you close your eyes, — does it al - most feel like you've

L
Eh oh e - oh, eh — eh oh e - oh, eh — eh oh e - oh, eh — eh oh e - oh. Eh — eh oh e - oh, eh — eh oh e - oh, eh —

P.C.
D A F#m E D A

Gtr.
D5 A5 F#5 E5 D5 A5

Bass

Dr.

Perc.

102

H
— been here be-fore. — Oh, — how am I gon-na be an op - ti-mist a-bout — this? How am I gon-na be an op - ti-mist a-bout

M
— been here be-fore. — Ah. — Ah. —

L
— eh oh e - oh, eh — eh oh Oh, — how am I gon-na be an op - ti-mist a-bout — this? How am I gon-na be an op - ti-mist a-bout

P.C.
F#m E D A E D A

Gtr.
F#5 E5 D5 A5 E5 N.C. D5 A5

Bass

Dr.

Perc.
Handclap

Pompeii 3
Chorus-LIGHT small Combo extra staves

D

21

H

M

L

1

2

P.C.

Gtr.

Bass

Dr.

Perc.

Pompeii 5
Chorus-LIGHT small Combo extra staves

H
- thing changed at all. And if you close your eyes, _____ does it al - most feel like you've _____ been here be-fore. _____ Ah. _____

M
- thing changed at all. And if you close your eyes, _____ does it al - most feel like you've _____ been here be-fore. _____ Ah. _____

L
_____ eh oh e - oh, eh _____ eh oh e - oh, Eh _____ eh oh e - oh, eh _____ eh oh e - oh, eh _____ eh oh e - oh, eh _____ eh oh e - oh, eh _____ eh oh How am I gon-na be an op - ti-mist a-bout

1
2

P.C.
F#m E D A F#m E D A

Gtr.
F#5 E5 D5 A5 F#5 E5 D5 A5

Bass
Dr.
Perc.

Handclap

Pompeii 7
Chorus-LIGHT small Combo extra staves

G

5/1

H

M

L

1

2

P.C.

Gtr.

Bass

Dr.

Perc.

Pompeii 9
Chorus-LIGHT small Combo extra staves

65

H
- thing changed at all. And if you close your eyes, _____ does it al - most feel like you've _____ been here be-fore. _____ Ah. _____

M
- thing changed at all. And if you close your eyes, _____ does it al - most feel like you've _____ been here be-fore. _____ Ah. _____

L
_____ eh oh e - oh, eh _____ eh oh e - oh, Eh _____ eh oh e - oh, eh _____ eh oh e - oh, eh _____ eh oh e - oh, eh _____ eh oh e - oh, eh _____ eh oh How am I gon-na be an op - ti-mist a-bout

1

2

P.C.

F#m E D A F#m E D A

Detailed description: This section shows the piano accompaniment for the chorus. It consists of two staves: a treble clef staff with a key signature of one sharp (F#) and a common time signature, and a bass clef staff. The chords are: F#m (F#4, A4, C5), E (E4, G#4, B4), D (D4, F#4, A4), A (A4, C#5, E5), F#m (F#4, A4, C5), E (E4, G#4, B4), D (D4, F#4, A4), and A (A4, C#5, E5). The bass line is mostly quarter notes, while the treble line features some eighth and sixteenth notes.

Gtr.

F#5 E5 D5 A5 F#5 E5 D5 A5

Detailed description: This section shows the guitar accompaniment. It consists of a single staff with a key signature of one sharp (F#) and a common time signature. The chords are: F#5 (F#4, A4, C5), E5 (E4, G#4, B4), D5 (D4, F#4, A4), A5 (A4, C#5, E5), F#5 (F#4, A4, C5), E5 (E4, G#4, B4), D5 (D4, F#4, A4), and A5 (A4, C#5, E5). The guitar part is primarily composed of eighth and sixteenth notes, with some accents and slurs.

Bass

Dr.

Detailed description: This section shows the bass and drum accompaniment. The bass line (Bass staff) consists of eighth and sixteenth notes, often with a 'x' mark above it indicating a specific technique. The drum line (Drum staff) shows a consistent rhythmic pattern with eighth and sixteenth notes, also marked with 'x'.

Perc.

Detailed description: This section shows the percussion accompaniment. It consists of a single staff with a key signature of one sharp (F#) and a common time signature. The percussion part is primarily composed of eighth and sixteenth notes, with some accents and slurs.

Pompeii 11
Chorus-LIGHT small Combo extra staves

80

H

 M

 L

 1

 2

 P.C.

 Gtr.

 Bass

 Dr.

 Perc.



Pompeii 13
Chorus-LIGHT small Combo extra staves

97

H - most feel like no - thing changed at all. And if you close your eyes, does it al - most feel like you've been here be - fore. Oh, how am
 M - most feel like no - thing changed at all. And if you close your eyes, does it al - most feel like you've been here be - fore.
 L - eh oh e - oh, eh eh oh e - oh, eh eh oh e - oh, Eh eh oh e - oh, eh eh oh e - oh, eh eh oh e - oh, eh eh oh e - oh, eh eh oh Oh, how am

1
 2

P.C. A F#m E D A F#m E
 Gtr. A5 F#5 E5 D5 A5 F#5 E5
 Bass
 Dr.
 Perc.

Pompei 15
Chorus-LIGHT small Combo extra staves

111

H
Eh eh oh e-oh, eh eh oh e-oh, eh eh oh e-oh, Eh eh oh e-oh, eh eh oh e-oh, eh eh oh e-oh, Eh eh oh e-oh, eh eh oh e-oh.

M
Eh eh oh e-oh, eh eh oh e-oh, eh eh oh e-oh, Eh eh oh e-oh, eh eh oh e-oh, eh eh oh e-oh, Eh eh oh e-oh, eh eh oh e-oh.

L
eh oh e-oh, Eh eh oh e-oh, eh eh oh e-oh, eh eh oh e-oh, eh eh oh e-oh, Eh eh oh e-oh, eh eh oh e-oh, eh eh oh e-oh.

1

2

PC.
E D A A/g# F#m E^{sus4} E D A A/g# F#m E^{sus4}

Gtr.
E5

Bass

Dr.

Perc.

Pompeii

- Bastille -

Words and Music by Dan Smith
Arranged by Hans Reintjes
Original Key A major

Pop/Rock ♩ = 128

A

HIGH
MID
LOW

Piano Solo
Advanced

D A A/g# F#m E sus4 E D A A/g# F#m E

B

9
H
M
L

— eh oh e - oh, eh — eh oh e - oh, eh — eh oh e - oh, eh — eh oh e - oh, Eh — eh oh e - oh, eh
— eh oh e - oh, eh — eh oh e - oh, eh — eh oh e - oh, eh — eh oh e - oh, Eh — eh oh e - oh, eh
— eh oh e - oh, eh — eh oh e - oh, eh — eh oh e - oh, eh — eh oh e - oh, Eh — eh oh e - oh, eh

D A F#m E sus4 E D

P.S.A.
(staccato)

Pompeii 3
Chorus-LIGHT Piano Solo Advanced

E

32

H
— But if you close your eyes, — does it al - most feel like no -

M
— But if you close your eyes, — does it al - most feel like no -

L
— Eh oh e - oh, eh — eh oh e - oh, eh

P.S.A.

36

H
- - thing changed at all. — And if you close your eyes, — does it al - most feel like you've

M
- - thing changed at all. — And if you close your eyes, — does it al - most feel like you've

L
— eh oh e - oh, eh — eh oh e - oh. Eh — eh oh e - oh, eh — eh oh e - oh, eh —

P.S.A.

40

H
— been here be - fore. — Ah. —

M
— been here be - fore. — Ah. —

L
— eh oh e - oh, eh — eh oh How am I gon-na be an op - ti - mist — a - bout — this? How am

P.S.A.

Pompeii 5
Chorus-LIGHT Piano Solo Advanced

H

59
H
a - bove. But if you close your eyes, does it al -

M
from a - bove. But if you close your eyes, does it al -

L
hills bring-ing dark-ness from a - bove. Eh oh e - oh, eh

P.S.A.
A F#m D

64
H
- most feel like no - thing changed at all. And if you close your eyes, does it al -

M
- most feel like no - thing changed at all. And if you close your eyes, does it al -

L
eh oh e - oh, eh eh oh e - oh, eh eh oh e - oh. Eh eh oh e - oh, eh

P.S.A.
A F#m E D

68
H
- most feel like you've been here be - fore. Ah.

M
- most feel like you've been here be - fore. Ah.

L
eh oh e - oh, eh eh oh e - oh, eh eh oh How am I gon-na be an op - ti-mist a - bout

P.S.A.
A F#m E D A

87

H
were do we be - gin? The rub - ble or our sins? oh

M
were do we be - gin? The rub - ble or our sins? oh

L
walls kept tum - b - ling down in the ci - ty that we love. Grey

P.S.A.
D A A/g# F#m E sus4 E

91

H
— were do we be - gin? The rub - ble or our sins?

M
— were do we be - gin? The rub - ble or our sins?

L
clouds roll o - ver the hills bring - ing dark - ness from a - bove.

P.S.A.
D A A/g# F#m E

95

H
But if you close your eyes, does it al - most feel like no - thing changed at all.

M
But if you close your eyes, does it al - most feel like no - thing changed at all.

L
Eh oh e - oh, eh eh oh e - oh, eh eh oh e - oh, eh

P.S.A.
D A F#m

J



Chorus-LIGHT Piano Solo Intermediate

Pompeii

- Bastille -

Words and Music by Dan Smith
Arranged by Hans Reintjes
Original Key A major

Pop/Rock ♩ = 128

A

HIGH
MID
LOW

Piano Solo Intermediate

D A A/g# F#^m E^{sus4} E D A A/g# F#^m E^{sus4} E

B

H
M
L

P.S.I.

9

— eh oh e-oh, eh — eh oh e-oh, eh — eh oh e-oh, eh — eh oh e-oh, Eh — eh oh e-oh, eh — eh oh e-oh, eh

— eh oh e-oh, eh — eh oh e-oh, eh — eh oh e-oh, eh — eh oh e-oh, Eh — eh oh e-oh, eh — eh oh e-oh, eh

— eh oh e-oh, eh — eh oh e-oh, eh — eh oh e-oh, eh — eh oh e-oh, Eh — eh oh e-oh, eh — eh oh e-oh, eh

D A A/g# F#^m E^{sus4} E D A A/g#

© www.ChorusOnline.com / 0031 (0) 6 - 41 57 77 56



E

33

H
But if you close your eyes, _____ does it al - most feel like no - thing changed at all. _____ And if you close your eyes,

M
But if you close your eyes, _____ does it al - most feel like no - thing changed at all. _____ And if you close your eyes,

L
Eh oh e - oh, eh _____ eh oh e - oh, eh _____ eh oh e - oh, eh _____ eh oh e - oh. Eh _____

P.S.I.
D A F#m E

38

H
_____ does it al - most feel like you've _____ been here be - fore. _____ Ah. _____

M
_____ does it al - most feel like you've _____ been here be - fore. _____ Ah. _____

L
_____ eh oh e - oh, eh _____ eh oh e - oh, eh _____ eh oh e - oh, eh _____ eh oh How am I gon - na be an op - ti - mist a - bout

P.S.I.
D A F#m E D A

F

43

H
_____ Ah. _____

M
_____ Ah. _____ We were caught up and lost _____ in all

L
_____ this? How am I gon - na be an op - ti - mist a - bout _____ this? _____ We were caught up and lost _____ in all

P.S.I.
E D A E D A

Pompeii 5
Chorus-LIGHT Piano Solo Intermediate

64

H
- most feel like no - thing changed at all. And if you close your eyes, does it al - most feel like you've

M
- most feel like no - thing changed at all. And if you close your eyes, does it al - most feel like you've

L
_ eh oh e - oh, eh _ eh oh e - oh, eh _ eh oh e - oh. Eh _ eh oh e - oh, eh _ eh oh e - oh, eh _

P.S.I.
A F#m E D A

69

H
_ been here be - fore. Ah.

M
_ been here be - fore. Ah.

L
_ eh oh e - oh, eh _ eh oh How am I gon - na be an op - ti - mist _ a - bout this? How am

P.S.I.
F#m E D A E

73

H
Ah. Eh oh e - oh, eh _ eh oh e - oh, eh _ eh oh e - oh, eh

M
Ah. Eh oh e - oh, eh _ eh oh e - oh, eh _ eh oh e - oh, eh

L
I gon - na be an op - ti - mist a - bout this? Eh oh e - oh, eh _ eh oh e - oh, eh _ eh oh e - oh, eh

P.S.I.
D A E D A F#m

Pompeii 7
Chorus-LIGHT Piano Solo Intermediate

J

93

H
- ble or our sins? But if you close your eyes, does it al - most feel like no -

M
- ble or our sins? But if you close your eyes, does it al - most feel like no -

L
bove. Eh oh e - oh, eh eh oh e - oh, eh

P.S.I.
F#m E D A

98

H
- thing changed at all. And if you close your eyes, does it al - most feel like you've been here be - fore.

M
- thing changed at all. And if you close your eyes, does it al - most feel like you've been here be - fore.

L
eh oh e - oh, eh eh oh e - oh. Eh eh oh e - oh, eh eh oh e - oh, eh eh oh e - oh, eh

P.S.I.
F#m E D A F#m

103

H
Oh, how am I gon - na be an op - ti - mist a - bout this? How am I gon - na be an op - ti - mist a - bout

M
Ah. Ah.

L
eh oh Oh, how am I gon - na be an op - ti - mist a - bout this? How am I gon - na be an op - ti - mist a - bout

P.S.I.
E D A E D A



Chorus-LIGHT

Pompeii

- Bastille -

Words and Music by Dan Smith
Arranged by Hans Reintjes
Original Key A major

Pop/Rock ♩ = 128

A

B

HIGH

MID

LOW

Eh__eh oh e-oh, eh__eh oh e-oh, eh__eh oh e-oh, eh

Eh__eh oh e-oh, eh__eh oh e-oh, eh__eh oh e-oh, eh

Eh__eh oh e-oh, eh__eh oh e-oh, eh__eh oh e-oh, eh

H

M

L

12

_eh oh e-oh. Eh__eh oh e-oh, eh__eh oh e-oh, eh__eh oh e-oh, eh__eh oh e-oh.

_eh oh e-oh. Eh__eh oh e-oh, eh__eh oh e-oh, eh__eh oh e-oh, eh__eh oh e-oh.

_eh oh e-oh. Eh__eh oh e-oh, eh__eh oh e-oh, eh__eh oh e-oh, eh__eh oh e-oh.

© www.ChorusOnline.com / 0031 (0) 6 - 41 57 77 56

ORIGINAL DO NOT COPY

36

H
thing changed at all. — And if you close your eyes, — does it al - most feel like you've

M
thing changed at all. — And if you close your eyes, — does it al - most feel like you've

L
— eh oh e - oh, eh — eh oh e - oh. Eh — eh oh e - oh, eh — eh oh e - oh, eh —

40

H
— been here be - fore. — Ah. —

M
— been here be - fore. — Ah. —

L
— eh oh e - oh, eh — eh oh How am I gon - na be an op - ti - mist a - bout — this? How am

44

H
Ah. —

M
Ah. — We were caught up and lost — in all

L
I gon - na be an op - ti - mist a - bout — this? — We were caught up and lost — in all

F

48

H
Handclap

M
— of our vi - ces. In your pose — as the dust — set - tled — a - round

L
— of our vi - ces. In your pose as the dust set - tled — a - round

70

H Ah. Ah.

M Ah. Ah.

L

— eh oh How am I gon-na be an op - ti-mist a -bout this? How am I gon-na be an op - ti-mist a -bout

74

H Eh oh e-oh, eh—eh oh e-oh, eh—eh oh e-oh, eh—eh oh e-oh.

M Eh oh e-oh, eh—eh oh e-oh, eh—eh oh e-oh, eh—eh oh e-oh.

L

— this? Eh oh e-oh, eh—eh oh e-oh, eh—eh oh e-oh, eh—eh oh e-oh. Oh

I

79

H oh—were do we— be-gin?

M The rub - ble or— our sins? oh—were do we— be-gin?

L were do we— be-gin? Oh, oh—were do we— be-gin?

84

H The rub - ble or— our sins? oh were do we— be - gin?

M The rub - ble or— our sins? oh were do we— be - gin?

L The rub - ble or— our sins? And the walls kept tum - b - ling down

104

H I gon-na be an op - ti - mist a - bout ___ this? How am I gon-na be an op - ti - mist a - bout

M Ah. _____ Ah. _____

L I gon-na be an op - ti - mist a - bout ___ this? How am I gon-na be an op - ti - mist a - bout

K

107

H ___ this? If you close your eyes, _____ does it al - most feel like no - thing changed at all?

M ___ If you closes your eyes, _____ does it al - most feel like no - thing changed at all.

L ___ this? If you close your eyes, _____ e-oh, eh ___ eh oh e - oh, eh ___ eh oh e - oh, at eh

111

H _____ Eh ___ eh oh e - oh, eh ___ eh oh e - oh, eh ___ eh oh e - oh, eh ___ eh oh e - oh. Eh

M _____ Eh ___ eh oh e - oh, eh ___ eh oh e - oh, eh ___ eh oh e - oh, eh ___ eh oh e - oh. Eh

L _____ eh oh e - oh. Eh ___ eh oh e - oh, eh ___ eh oh e - oh, eh ___ eh oh e - oh, eh ___ eh oh e - oh. Eh

116

H ___ eh oh e - oh, eh ___ eh oh e - oh, eh ___ eh oh e - oh, eh ___ eh oh e - oh.

M ___ eh oh e - oh, eh ___ eh oh e - oh, eh ___ eh oh e - oh, eh ___ eh oh e - oh.

L ___ eh oh e - oh, eh ___ eh oh e - oh, eh ___ eh oh e - oh, eh ___ eh oh e - oh.

Pompeii

- Bastille -

Words and Music by Dan Smith
Arranged by Hans Reintjes
Original Key A major

Pop/Rock ♩ = 128

A

B

C

D

C Instr.

28

E
34

39

45 **F** **G**

58 **H**

65

70

75

Pompeii

- Bastille -

Words and Music by Dan Smith
Arranged by Hans Reintjes
Original Key A major

Pop/Rock ♩ = 128

A **B** **C** **D**

Bb Instr. 

28 

E
34 

39 

45 **F** **G**


58 **H**


65 

70 

75 

Pompeii

- Bastille -

Words and Music by Dan Smith
Arranged by Hans Reintjes
Original Key A major

Pop/Rock ♩ = 128

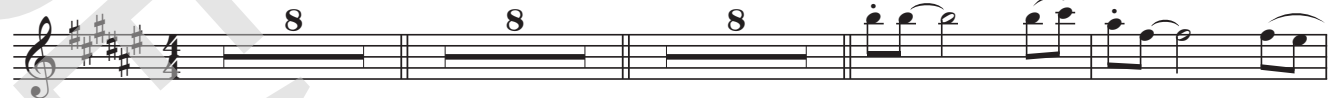
A

B

C

D

Eb Instr.



E

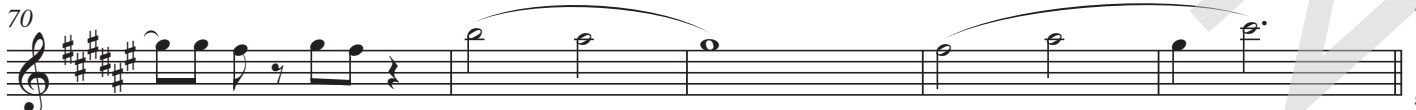


F

G



H



Pompeii

- Bastille -

Words and Music by Dan Smith
Arranged by Hans Reintjes
Original Key A major

Pop/Rock ♩ = 128

A

D A F#m E D

No synth. or guitar play small notes

(staccato)

B

A F#m E D A

11 F#m E D A F#m

C

E D A F#m E D A F#m E

D

25 D A F#m E D A F#m

Pompeii

- Bastille -

Words and Music by Dan Smith
Arranged by Hans Reintjes
Original Key A major

Pop/Rock ♩ = 128

A

D A A/g# F#m E^{sus4} E D A A/g# F#m E

B

9 D A F#m E^{sus4} E D

C

14 A F#m E^{sus4} E D A F#m

D

20 E D A F#m E D

26 A F#m E D A F#m

Pompeii

- Bastille -

Words and Music by Dan Smith
Arranged by Hans Reintjes
Original Key A major

Pop/Rock ♩ = 128

A

D A A/g# F#m E^{sus4} E D A A/g# F#m E^{sus4} E

B

9 D A A/g# F#m E^{sus4} E D A A/g# F#m E^{sus4} E

C

17 D A F#m E D A

D

23 F#m E D A F#m E

29

D A F#m E

Pompeii

- Bastille -

Words and Music by Dan Smith
Arranged by Hans Reintjes
Original Key A major

Pop/Rock ♩ = 128

A

Warm pad (legato)

Sawtooth (staccato)

B

5

10

C

15

20

Pompeii

- Bastille -

Words and Music by Dan Smith
Arranged by Hans Reintjes
Original Key A major

Pop/Rock ♩ = 128

A

El. Guitar (distortion muted)

8^{vb}

Guitar



B



C



D



E

D5 A5



El. Guitar (distortion)

Pompeii

- Bastille -

Words and Music by Dan Smith
Arranged by Hans Reintjes
Original Key A major

Pop/Rock ♩ = 128

Bass Guitar

8 8

21

27

32

38

44

49

Drumkit/Percussion

High Tom
Hi-Hat closed
Hi-Hat open
Mid Tom
Low Tom
Ride Cymbal
Crash Cymbal
Shareclick
Bassdrum (Kick)
Snaredrum
Hi-Hat Foot
Floor Tom
Ride Bell/Cup
Splash Cymbal
Triangle mute
Tambourine Beating
Triangle open

Detailed description: This musical staff shows various drum and percussion sounds. It includes notes for Hi-Hat closed and open, Hi-Hat foot, Shareclick, Bassdrum (Kick), Snaredrum, High Tom, Mid Tom, Low Tom, Floor Tom, Ride Cymbal, Ride Bell/Cup, Crash Cymbal, Splash Cymbal, Triangle mute, Tambourine Beating, and Triangle open. The notes are placed on a five-line staff with a double bar line at the beginning.

Shaker (eggs)
Claves
High Timbale
Sleigh Bells
Bell Tree
Maracas
Wind Chimes
Handclap
Guero
Woodblock High
Timbale Low
Agogo High
Cowbell
Conga
Cabasa
Woodblock Low
Agogo Low

Detailed description: This musical staff shows various Latin and world percussion sounds. It includes notes for Shaker (eggs), Claves, High Timbale, Sleigh Bells, Bell Tree, Maracas, Wind Chimes, Handclap, Guero, Woodblock High, Timbale Low, Agogo High, Cowbell, Conga, Cabasa, Woodblock Low, and Agogo Low. The notes are placed on a five-line staff with a double bar line at the beginning.

Pompeii

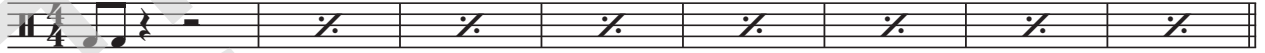
- Bastille -

Words and Music by Dan Smith
Arranged by Hans Reintjes
Original Key A major

Pop/Rock ♩ = 128

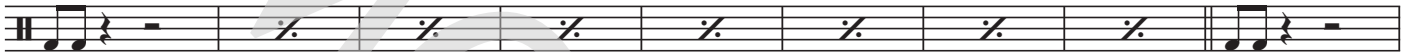
A

Drums



B

9



C

18



D

26



31



36

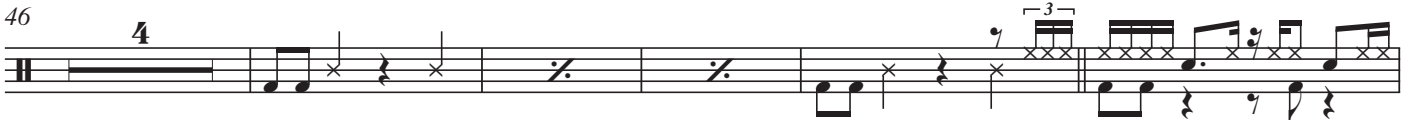


41



F

46



G

Drumkit/Percussion

High Tom
Hi-Hat closed
Hi-Hat open
Mid Tom
Low Tom
Ride Cymbal
Crash Cymbal
Shareclick
Bassdrum (Kick)
Snaredrum
Hi-Hat Foot
Floor Tom
Ride Bell/Cup
Splash Cymbal
Triangle mute
Tambourine Beating
Triangle open

- Shaker (eggs)
- Claves
- High Timbale
- Sleigh Bells
- Bell Tree
- Maracas
- Wind Chimes

Handclap
Guero
Woodblock High
Timbale Low
Agogo High
Cowbell
Conga Cabasa
Woodblock Low
Agogo Low

Pompeii

- Bastille -

Words and Music by Dan Smith
Arranged by Hans Reintjes
Original Key A major

Pop/Rock ♩ = 128

A **B** **C** **D**

Percussion

8 8 8 Handclap

28

E

34 Cowbell

41

Handclap

4

G

51

58 Cowbell

H

63

Pompeii

- Bastille -

Words and Music by Dan Smith
Arranged by Hans Reintjes
Original Key A major

Pop/Rock ♩ = 128

A

D A F#m E D A

B

7 F#m E D A F#m

Eh__ eh oh e-oh, eh__ eh oh e-oh, eh__ eh oh e-oh, eh

12 E D A F#m E

_ eh oh e-oh. Eh__ eh oh e-oh, eh__ eh oh e-oh, eh__ eh oh e-oh, eh__ eh oh e-oh.

C

17 D A F#m E D A

I was left to my own de-vi - i - i - i - ces. Ma-ny days__ fell a - way with

D

23 F#m E D A F#m

no - thing to show.____ And the walls kept tum-b-ling down__ in the ci-ty that we love.____

28 E D A F#m E

__ Grey clouds roll o-ver the hills__ bring-ing dark-ness from a - bove.____



Lyrics

Pompeii

- Bastille -

*Words and Music by Dan Smith
Arranged by Hans Reintjes
Original Key A major*

A: Intro

B
Eh eh oh eh oh. 8x

C
I was left to my own devices.
Many days fell away with nothing to show.

D
And the walls kept tumbling down in the city that we love.
Grey clouds roll over the hills bringing darkness from above.

E
But if you close your eyes, does it almost feel like nothing changed at all?
And if you close your eyes, does it almost feel like you've been here before?
How am I gonna be an optimist about this? 2x

F
We were caught up and lost in all of our vices.
In your pose as the dust settled around us.

G
And the walls kept tumbling down in the city that we love.
Grey clouds roll over the hills bringing darkness from above.

H
But if you close your eyes, does it almost feel like nothing changed at all?
And if you close your eyes, does it almost feel like you've been here before?
How am I gonna be an optimist about this? 2x
Eh eh oh eoh. 4x

I
Oh where do we begin? The rubble or our sins? 2x
And the walls kept tumbling down in the city that we love.
Grey clouds roll over the hills bringing darkness from above.

J
But if you close your eyes, does it almost feel like nothing changed at all?
And if you close your eyes, does it almost feel like you've been here before?
How am I gonna be an optimist about this? 2x

K
If you close your eyes, does it almost feel like nothing changed at all?
Eh oh eh oh. 8x