



Hard to say I'm sorry Chorus-LIGHT

Pag.

02	Full score combo C instrument
07	Full score combo Bb instrument
12	Full score combo Eb instrument
17	Full score combo 4 extra staves
24	Full score small combo
31	Full score small combo 2 extra staves
41	Full score vocals (HML) piano advanced
46	Full score vocals (HML) piano moderated
51	Vocals (HML)
55	C instrument
56	Bb instrument
57	Eb instrument
58	Piano advanced
61	Piano moderated
64	Synthesizer
66	Guitar
68	Bassguitar
70	Drumkit
72	Leadsheet in E (melody, lyrics, chords) orig. Key
75	Leadsheet in G (melody, lyrics, chords)
78	Empty paper
80	Lyrics



Chorus-LIGHT Combo C

Hard to Say I'm Sorry

Words and Music by David Foster and Peter Cetera

Arranged by Dirk Kokx

Original Key E major

DEMO

VERSE

Intro Steady, with an inner drive

Verse 1 *mf*

E-very-bo-dy needs a li-ttle time a-way

mf

G C/e D/f# B/d# Em A/C# Dsus4 D G G

Strings *mp*

Guitar

Bass Guitar *mf*

Drum Set

Hard to Say I'm Sorry 3

Chorus-LIGHT Combo C

Verse 2

24

H
and done You're just_ a part of me_ I can't_ let go
Could-n't stand to be kept a-way_ just for the day_ from your bo - dy.

M
and done You're just_ a part of me_ I can't_ let go
Could-n't stand to be kept a-way_ just for the day_ from your bo - dy.

L
_ done_ You're just_ a part of me_ I can't let go
Could-n't stand to be kept a-way_ just for the day_ from your bo - dy.

C

P.A.
D/f# B/d# Em A/C# Dsus4 D Dsus4 D G Bm7 C C D Em D

Synth

Gtr.
24
Chorus - Delay / fingerpicking

Bass

D.S.
mf

32

H
Would-n't want to be swept a-way, _ far a-way from the one that I love Hold me now It's hard for me to say I'm sor-ry

M
Would-n't want to be swept a-way, _ far a-way from the one that I love Hold me now It's hard for me to say I'm sor-ry I just want you to know

L
Would-n't want to be swept a-way, _ Far from the one that I love Hold me now It's hard for me to say I'm sor-ry I just want you to know

C
Shaker

P.A.
G Bm7 C C D Em D Em Am Dsus4 D7 G Em Am7

Synth

Gtr.
32

Bass

D.S.

Hard to Say I'm Sorry 5

Chorus-LIGHT Combo C

Chorus 3

52 *f*

H Af - ter all _ that we've been through I will make it up to you I pro - mise to.

M Af - ter all _ that we've been through I will make it up to you I pro - mise to.

L Af - ter all _ that we've been through I will make it up to you I pro - mise to.

C

P.A. *f* B \flat E \flat /g F/a D/f# Gm C/e F $\text{sus}4$ F $\text{sus}4$ /g F/a B \flat E \flat /g F/a D/f# Gm C/e

Synth

Gtr. 52 *f* Distortion *ff*

Bass *f*

D.S. *f*

Coda

59

H You are gon-na be the lu - cky one oo

M oo

L doo doo _ doo doo oo doo doo doo doo doo

C *f*

P.A. F $\text{sus}4$ F F $\text{sus}4$ /g F/a B \flat E \flat /g F/a D/f# Gm C/e F \flat /e \flat D $\text{sus}4$ D G $\text{add}2$ *mf* 3

Synth

Gtr. 59 *f*

Bass

D.S.

Chorus-LIGHT Combo Bb



Hard to Say I'm Sorry

Words and Music by David Foster and Peter Cetera
Arranged by Dirk Kokx
Original Key E major

DEMO

VERSE

Intro Steady, with an inner drive

Verse 1 *mf*

E-very-bo-dy needs a li-ttle time a-way

Chords: G C/e D/f# B/d# Em A/C# Dsus4 D G G

Instrumentation: HIGH, MID, LOW, Bb Instr., Piano Adv., Synthesizer (Strings), Guitar, Bass Guitar, Drum Set

Hard to Say I'm Sorry 3

Chorus-LIGHT Combo Bb

Verse 2

24

H *and done_ You're just_ a part of me_ I can't_ let go* *Could-n't stand to be kept a-way_ just for the day_ from your bo - dy.*

M *and done_ You're just_ a part of me_ I can't_ let go* *Could-n't stand to be kept a-way_ just for the day_ from your bo - dy.*

L *done_ You're just_ a part of me_ I can't_ let go* *Could-n't stand to be kept a-way_ just for the day_ from your bo - dy.*

Bb

P.A. *D/f# B/d# Em A/C# Dsus4 D Dsus4 D G Bm7 C C D Em D*

Synth

Gtr. *Chorus - Delay / fingerpicking*

Bass

D. S. *mf*

32

H *Would-n't want to be swept a-way, _ far a-way from the one that I love Hold me now It's hard for me to say I'm sor-ry*

M *Would-n't want to be swept a-way, _ far a-way from the one that I love Hold me now It's hard for me to say I'm sor-ry I just want you to know*

L *Would-n't want to be swept a-way, _ Far from the one that I love Hold me now It's hard for me to say I'm sor-ry I just want you to know*

Bb *Shaker*

P.A. *G Bm7 C C D Em D Em Am Dsus4 D7 G Em Am7*

Synth

Gtr. *32*

Bass

D. S.

Hard to Say I'm Sorry 5

Chorus-LIGHT Combo Bb

Chorus 3

52 *f*

H Af-ter all... that we've been through I will make it up to you I pro - mise to.

M Af-ter all... that we've been through I will make it up to you I pro - mise to.

L Af-ter all... that we've been through I will make it up to you I pro - mise to.

Bb

P.A. *f* B \flat E \flat /g F/a D/f \sharp Gm C/e F_{sus4} F_{sus4}/g F/a B \flat E \flat /g F/a D/f \sharp Gm C/e

Synth

Gtr. 52 *f* Distortion *ff*

Bass *f*

D.S. *f*

Coda

59

H You are gon-na be the lu - cky one oo

M oo oo

L doo doo... doo doo oo doo doo doo doo

Bb *f*

P.A. F_{sus4} F F_{sus4}/g F/a B \flat E \flat /g F/a D/f \sharp Gm C/e F \sharp /e D_{7sus4} D G_{add2} *mf* 3

Synth

Gtr. 59 *f*

Bass

D.S.

Hard to Say I'm Sorry

Words and Music by David Foster and Peter Cetera
Arranged by Dirk Kokx
Original Key E major

DEMO

VERSE

Intro Steady, with an inner drive

Verse 1 *mf*

E-very-bo-dy needs a li-ttle time a-way

mf

G C/e D/f# B/d# Em A/C# D_{sus4} D G G

Piano Adv. *mf*

Synthesizer Strings *mp*

Guitar

Bass Guitar *mf*

Drum Set

Hard to Say I'm Sorry 3

Chorus-LIGHT Combo Eb

Verse 2

24

H *and done_ You're just_ a part of me_ I can't_ let go* *Could-n't stand to be kept a-way_ just for the day_ from your bo - dy.*

M *and done_ You're just_ a part of me_ I can't_ let go* *Could-n't stand to be kept a-way_ just for the day_ from your bo - dy.*

L *done_ You're just_ a part of me_ I can't_ let go_* *Could-n't stand to be kept a-way_ just for the day_ from your bo - dy.*

Eb

P.A. *D/f# B/d# Em A/C# Dsus4 D Dsus4 D G Bm7 C C D Em D*

Synth

Gtr. 24 *Chorus - Delay / fingerpicking*

Bass

D.S. *mf*

32

H *Would-n't want to be swept a-way, _ far a-way from the one that I love Hold me now It's hard for me to say I'm sor-ry*

M *Would-n't want to be swept a-way, _ far a-way from the one that I love Hold me now It's hard for me to say I'm sor-ry I just want you to know*

L *Would-n't want to be swept a-way, _ Far from the one that I love Hold me now It's hard for me to say I'm sor-ry I just want you to know*

Eb *Shaker*

P.A. *G Bm7 C C D Em D Em Am Dsus4 D7 G Em Am7*

Synth

Gtr. 32

Bass

D.S.

Hard to Say I'm Sorry 5

Chorus-LIGHT Combo Eb

Chorus 3
52

H
Af-ter all... that we've been through I will make it up to you I pro - mise to.

M
Af-ter all... that we've been through I will make it up to you I pro - mise to.

L
Af-ter all... that we've been through I will make it up to you I pro - mise to.

Eb

P.A.
B \flat E \flat /g F/a D/f \sharp Gm C/e F $_{sus4}$ F $_{sus4}$ /g F/a B \flat E \flat /g F/a D/f \sharp Gm C/e

Synth

Gtr.
52 f Distortion ff

Bass
f

D.S.
f

Coda
59

H
You are gon-na be the lu - cky one oo

M
oo oo

L
doo doo_ doo doo oo doo doo doo doo doo

Eb

P.A.
F $_{sus4}$ F F $_{sus4}$ /g F/a B \flat E \flat /g F/a D/f \sharp Gm C/e F $_{sus4}$ D $_{7sus4}$ D Gadd2 mf 3

Synth

Gtr.
59 f

Bass

D.S.



Chorus-LIGHT 4 extra staves

Hard to Say I'm Sorry

Words and Music by David Foster and Peter Cetera

Arranged by Dirk Kokx

Original Key E major

mp Steady, with an inner drive

Verse 1
mf

E-ven lo-ve-dy needs a lit-tle time a-way — The heart you say — from each of — her — E-ven lo-ve-dy need a ho-li-day —

from each of — her — from each of — her —

00 00 00 00

1 2 3 4

G C/e D/F# B/d# Em A/C# Dsus4 D G G Bm7 C C D Em D G Bm7

Strings *mp*

Piano Adv. *mf*

Synthesizer *mp*

Guitar *mp*

Bass Guitar *mp*

Drum Set



Hard to Say I'm Sorry 3

Chorus-LIGHT 4 extra staves

Verse 2

22

H
- mise to. And after all that's been said — and done — You're just — a part of me — I can't — let go
Could-n't stand to be kept a-way — just for the day — from your bo - dy.

M
- mise to, yes I do. all that's been said — and done — You're just — a part of me — I can't — let go
Could-n't stand to be kept a-way — just for the day — from your bo - dy.

L
- mise to, yes I do. all that's been said — done — You're just — a part of me — I can't — let go —
Could-n't stand to be kept a-way — just for the day — from your bo - dy.

1
2
3
4

D_{sus4} D D_{sus4} / e G C/e D / # B / d # E m A / c # D_{sus4} D D_{sus4} D G B m7 C C D E m D

Synth

Gtr.
22
Chorus - Delay / fingerpicking

Bass

D. S.
mf

Hard to Say I'm Sorry 5

Chorus-LIGHT 4 extra staves

Chorus 2

4/4

H
real-ly want to tell you I'm sor - ry I could ne-ver let you go Af - ter all — that we've been through — I will make it up to you I pro - mise to. And af - ter all that's been said

M
real-ly want to tell you I'm sor - ry I could ne-ver let you go — Af - ter all — that we've been through — I will make it up to you I pro - mise to. yes I do. all that's been said

L
I real-ly want to tell I could ne-ver let you go — Af - ter all — that we've been through — I will make it up to you I pro - mise to. yes I do. all that's been said

1
2
3
4

P.A.
D^{sus4} D₇ G E_m A_{m7} D^{sus4} D G G C_{/e} D^{#/F#} B^{/D#} E_m A_{/C#} D^{sus4} D^{sus4} D^{#/F#} G C_{/e}

Synth
4/4

Gtr.
4/4

Bass
4/4

D. S.
4/4

small fill



Chorus-LIGHT small Combo

Hard to Say I'm Sorry

Words and Music by David Foster and Peter Cetera

Arranged by Dirk Kokx

Original Key E major

DEMO

Intro Steady, with an inner drive

HIGH

MID

LOW

Piano Adv. *mf*

Guitar

Bass Guitar *mf*

Drum Set

G C/e D/f# B/d# Em A/C# D^{sus4} D G

© www.ChorusOnline.com / 0031 (0) 6 - 41 57 77 56

Hard to Say I'm Sorry 3

Chorus-LIGHT small Combo

Chorus 1

18

H Af - ter all ___ that we've been through ___ I will make it up to you I pro - mise to.

M Af - ter all ___ that we've been through ___ I will make it up to you I pro - mise to. yes I

L Af - ter all ___ that we've been through ___ I will make it up to you I pro - mise to. yes I

P.A. D_{7sus4} D G C/e $D/f\#$ $B/d\#$ Em $A/C\#$ D_{sus4} D D_{sus4}/e $D/f\#$

18

Gr.

Bass

D. S.

23

H And af - ter all that's been said ___ and done ___ You're just ___ a part of me ___ I can't ___ let go

M do. all that's been said ___ and done ___ You're just ___ a part of me ___ I can't ___ let go

L do. all that's been said ___ done ___ You're just ___ a part of me ___ I can't let go

P.A. G C/e $D/f\#$ $B/d\#$ Em $A/C\#$ D_{sus4} D D_{sus4} D

23

Gr.

Bass

D. S.

Hard to Say I'm Sorry 5

Chorus-LIGHT small Combo

38

H
oo — ba - by Hold me now — I real-ly want to tell you I'm sor - ry

M
I just want you to know — Hold me now — I real-ly want to tell you I'm sor - ry

L
I just want you to know — Hold me Just hold me now. — I real-ly want to

P.A.
Em Am7 D7sus4 D Em Am Dsus4 D7 G

Gr.
38

Bass

D. S.

42

H
I could ne-ver let you go Af-ter all — that we've been through — I will make it up to you I pro-

M
I could ne-ver let you go — Af-ter all — that we've been through — I will make it up to you I pro-

L
tell I could ne-ver let you go Af-ter all — that we've been through — I will make it up to you I pro-

P.A.
Em Am7 D7sus4 D G C/e D/f# B/d# Em A/C#

Gr.
42

Bass

D. S.
small fill - - - -

Hard to Say I'm Sorry 7

Chorus-LIGHT small Combo

Coda

57

H You are gon-na be the lu -

M oo

L doo doo_ doo doo oo

P.A. *F/a D/f# Gm C/e F_{sus4} F F_{sus4}/g F/a B^b E^b/g F/a D/f#*

Gr. *f*

Bass

D. S.

62

H - cky one oo

M oo

L doo doo doo doo doo

P.A. *Gm C/e F⁹/e^b D_{7sus4} D G_{add2}* *mf* 3

Gr.

Bass

D. S.

Chorus-LIGHT small Combo extra staves

Hard to Say I'm Sorry

Words and Music by David Foster and Peter Cetera
Arranged by Dirk Koks
Original Key E major

Intro
Steady, with an inner drive

HIGH
MID
LOW

1
2

Piano Adv.
mf

G C/e D/f# B/d# Em A/c# D^{sust} D G G Bm7 C C D Em D

verse 1
mf

E-very-bo-dy needs a li-ttle time a-way — I've heard you say — from each of - her
from each of - her

mf

Drum Set

Guitar

Bass Guitar

Chorus 1

Hard to Say I'm Sorry 3
Chorus-LIGHT small Combo extra staves

18

H Af - ter all — that we've been through — I will make it up to you I pro - mise to. And af - ter all that's been said

M Af - ter all — that we've been through — I will make it up to you I pro - mise to. Yes I do. all that's been said

L Af - ter all — that we've been through — I will make it up to you I pro - mise to. Yes I do. all that's been said

1

2

P.A. D7sus4 D G C/e D/f# B/d# Em A/c# Dsus4 D Dsus4/e D/f# G C/e

Gtr. 18

Bass 8

D. S.

Hard to Say I'm Sorry 5
 Chorus-LIGHT small Combo extra staves

30

H — from your bo - dy. Would-n't want to be swept a-way, — far a-way from the one that I love Hold me now It's

M — from your bo - dy. Would-n't want to be swept a-way, — far a-way from the one that I love Hold me now It's

L — from your bo - dy. Would-n't want to be swept a-way, — Far from the one that I love Hold me now It's

1

2

C C D Em D G Bm7 C C D Em D Em Am

Gtr. 8

Bass

D. S.

P.A.

Chorus 2

Hard to Say I'm Sorry 7
Chorus-LIGHT small Combo extra staves

42

H I could ne-ver let you go Af-ter all that we've been through I will make it up to you I pro-mise to.

M I could ne-ver let you go Af-ter all that we've been through I will make it up to you I pro-mise to. yes I

L tell I could ne-ver let you go Af-ter all that we've been through I will make it up to you I pro-mise to. yes I

1

2

P.A. Em Am7 D7sus4 D G C/e D/f# B/d# Em A/c# D sus4 D D sus4/e D/f#

Gtr. 8

Bass

D. S. *small fill*

Hard to Say I'm Sorry 9
 Chorus-LIGHT small Combo extra staves

54

H to you I pro - mise to.

M to you I pro - mise to.

L to you I pro - mise to. doo doo - doo

1

2

P.A. Gm C/e F sus4 F F sus4/g F/a B_b E^b/g F/a D/f# Gm C/e F sus4 F F sus4/g F/a

Gtr. 54 8 *ff* 3

Bass

D. S.



Chorus-LIGHT Piano advanced

Hard to Say I'm Sorry

Words and Music by David Foster and Peter Cetera

Arranged by Dirk Kokx

Original Key E major

Intro
Steady, with an inner drive

HIGH
MID
LOW

Piano Adv.
mf

G C/e D/f# B/d# Em A/C# D_{sus4} D G

Verse 1
7 *mf*

H
M
L

E-very-bo-dy needs a li-ttle time a-way — I've heard you say — from each ot - her E-ven lo-vers need a ho-li-day
from each ot - her oo
oo

P.A.
G Bm7 C C D Em D G

© www.ChorusOnline.com / 0031 (0) 6 - 41 57 77 56

Hard to Say I'm Sorry 3

Chorus-LIGHT Piano advanced

Verse 2

28

H
 Could-n't stand to be kept a-way — just for the day — from your bo - dy. Would-n't want to be swept a-way,

M
 Could-n't stand to be kept a-way — just for the day — from your bo - dy. Would-n't want to be swept a-way,

L
 Could-n't stand to be kept a-way — just for the day — from your bo - dy. Would-n't want to be swept a-way,

P.A
 G Bm7 C C D Em D G

33

H
 — far a-way from the one that I love Hold me now It's hard for me to say I'm sor-ry

M
 — far a-way from the one that I love Hold me now It's hard for me to say I'm sor-ry I just want you to know

L
 — Far from the one that I love Hold me now It's hard for me to say I'm sor-ry I just want you to know

P.A
 Bm7 C C D Em D Em Am Dsus4 D7 G Em Am7

39

H
 oo — ba-by Hold me now — I real-ly want to tell you I'm sor-ry I could ne-ver let you go

M
 — Hold me now — I real-ly want to tell you I'm sor-ry I could ne-ver let you go —

L
 — Hold me Just hold me now. — I real-ly want to tell I could ne-ver let you go

P.A
 D7sus4 D Em Am Dsus4 D7 G Em Am7 D7sus4 D

Hard to Say I'm Sorry 5

Chorus-LIGHT Piano advanced

Coda

56

H
M
L

You are gon-na be__ the lu -
oo
doo doo doo doo__ oo

B \flat E \flat /g F/a D/f \sharp G m C/e F $_{sus4}$ F $_{sus4}$ /g F/a B \flat E \flat /g F/a D/f \sharp

62

H
M
L

- cky one__ oo
oo
doo doo doo doo doo

G m C/e F 9 /e \flat D 7_{sus4} D G $_{add2}$

mf 3



Chorus-LIGHT Piano moderated

Hard to Say I'm Sorry

Words and Music by David Foster and Peter Cetera

Arranged by Dirk Kokx

Original Key E major

Intro

Steady, with an inner drive

HIGH

MID

LOW

Piano Mod.

G C/e D/f# B/d# Em A/C# D_{sus4} D G

Verse 1

H

M

L

P. M

E-very-bo-dy needs a li-ttle time a-way — I've heard you say — from each ot - her E-ven lo-vers need a ho-li-day

from each ot - her oo

oo

G Bm7 C C D Em D G

© www.ChorusOnline.com / 0031 (0) 6 - 41 57 77 56

Hard to Say I'm Sorry 3

Chorus-LIGHT Piano moderated

Verse 2

27

H
M
L

Could-n't stand to be kept a - way ___ just for the day ___ from your bo - dy.

P. M

*D*_{sus4} *D* *G* *Bm7* *C* *C* *D* *Em* *D*

32

H
M
L

Would-n't want to be swept a - way, ___ far a - way from the one that I love Hold me now It's

P. M

G *Bm7* *C* *C* *D* *Em* *D* *Em* *Am*

37

H
M
L

hard for me to say I'm sor - ry oo ___ ba-by Hold me now ___ I

P. M

*D*_{sus4} *D7* *G* *Em* *Am7* *D7sus4* *D* *Em* *Am*

Hard to Say I'm Sorry 5

Chorus-LIGHT Piano moderated

Coda

55

H
- mise to.

M
- mise to. oo

L
- mise to. doo doo doo doo

P. M
F_{sus4} F F_{sus4}/g F/a B \flat E \flat /g F/a D/f \sharp G_m C/e F_{sus4} F F_{sus4}/g F/a B \flat E \flat /g

61

H
You are gon-na be the lu - cky one oo

M
oo

L
oo doo doo doo doo

P. M
F/a D/f \sharp G_m C/e F \sharp /e \flat D_{7sus4} D G_{add2} *mf*

Hard to Say I'm Sorry

Words and Music by David Foster and Peter Cetera
Arranged by Dirk Kokx
Original Key E major

Steady, with an inner drive

Intro **6** *Verse 1* *mf*

HIGH

MID

LOW

E-very-bo-dy needs a li-ttle time a-way I've heard you say

9

H

M

L

mf

mf

from each ot - her E-ven lo-vers need a ho - li - day

from each ot - her

oo

oo

13

H

M

L

far a-way from each ot - her Hold me now It's hard for me to say I'm sor-ry

far a-way from each ot - her Hold me now It's hard for me to say I'm sor-ry

— from each ot - her Hold me now It's hard for me to say I'm sor-ry

Hard to Say I'm Sorry 3

Chorus-LIGHT

32

H Would-n't want to be swept a-way, — far a-way from the one that I love

M Would-n't want to be swept a-way, — far a-way from the one that I love

L Would-n't want to be swept a-way, — Far from the one that I love

36

H Hold me now It's hard for me to say I'm sor-ry oo__ ba-by

M Hold me now It's hard for me to say I'm sor-ry I just want you to know__

L Hold me now It's hard for me to say I'm sor-ry I just want you to know__

40

H Hold me now__ I real-ly want to tell you I'm sor-ry I could ne-ver let you

M Hold me now__ I real-ly want to tell you I'm sor-ry I could ne-ver let you

L Hold me Just hold me now.__ I real-ly want to tell I could ne-ver let you

43 *Chorus 2*

H go Af-ter all__ that we've been through__ I will make it up to you I pro-

M go__ Af-ter all__ that we've been through__ I will make it up to you I pro-

L go Af-ter all__ that we've been through__ I will make it up to you I pro-



C Instrument

Hard to Say I'm Sorry

Words and Music by David Foster and Peter Cetera

Arranged by Dirk Kokx

Original Key E major

Intro Steady, with an inner drive

Verse 1

Chorus 1

Musical notation for the Intro and Verse 1. The Intro consists of 5 measures. Verse 1 begins at measure 7 and continues for 11 measures. The music is in 4/4 time with a key signature of one sharp (F#). Dynamics include *mf* and accents.

Musical notation for the continuation of Verse 1, starting at measure 20. It features a melodic line with a *mf* dynamic.

Musical notation for Verse 2 and the Shaker section. Verse 2 starts at measure 26. The Shaker section begins at measure 30 and consists of 4 measures of rhythmic accompaniment.

Musical notation for the continuation of the Shaker section, starting at measure 36. It consists of 4 measures of rhythmic accompaniment.

Chorus 2

Musical notation for Chorus 2, starting at measure 44. It consists of 8 measures of music with a *mf* dynamic.

Chorus 3

Musical notation for Chorus 3, starting at measure 51. It consists of 10 measures of music with a *f* dynamic.

Coda

Musical notation for the Coda, starting at measure 57. It consists of 6 measures of music with a *f* dynamic.

© www.ChorusOnline.com / 0031 (0) 6 - 41 57 77 56



Bb Instrument

Hard to Say I'm Sorry

Words and Music by David Foster and Peter Cetera
Arranged by Dirk Kokx
Original Key E major

Intro Steady, with an inner drive **Verse 1** **Chorus 1**

Verse 2
28 4 Shaker

39 **Chorus 2**

46

Chorus 3
52

Coda
60

© www.ChorusOnline.com / 0031 (0) 6 - 41 57 77 56



E♭ Instrument

Hard to Say I'm Sorry

Words and Music by David Foster and Peter Cetera
Arranged by Dirk Kokx
Original Key E major

Intro

Steady, with an inner drive

Verse 1

Chorus 1

5 **mf** 11 **mf**

21

Verse 2

28

4

Shaker

Chorus 2

39

mf

46

f

Chorus 3

52

3

Coda

60

2

f

© www.ChorusOnline.com / 0031 (0) 6 - 41 57 77 56

Hard to Say I'm Sorry

Words and Music by David Foster and Peter Cetera

Arranged by Dirk Kokx

Original Key E major

Steady, with an inner drive

Intro

G C/e D/f# B/d# Em A/C#

Verse 1

4 D_{sus4} D G G B_{m7} C C D

10 Em D G B_{m7} C C D Em D

Chorus 1

15 Em Am G/d D7 G Em Am7 D7sus4 D G C/e



Piano Moderated

Hard to Say I'm Sorry

Words and Music by David Foster and Peter Cetera

Arranged by Dirk Kokx

Original Key E major

Steady, with an inner drive

Intro

G C/e D/f# B/d# Em A/c#

Verse 1

D_{sus4} D G G B_{m7} C C D

Em D G B_{m7} C C D Em D Em Am

Chorus 1

G/d D7 G Em Am7 D7sus4 D G C/e D/f# B/d#

© www.ChorusOnline.com / 0031 (0) 6 - 41 57 77 56



Synthesizer

Hard to Say I'm Sorry

Words and Music by David Foster and Peter Cetera
Arranged by Dirk Kokx
Original Key E major

Steady, with an inner drive

Intro

Strings

Verse 1

Chorus 1

Verse 2



Guitar

Hard to Say I'm Sorry

Words and Music by David Foster and Peter Cetera

Arranged by Dirk Kokx

Original Key E major

Steady, with an inner drive

Intro

Verse 1

Chorus 1

6 12 9

Verse 2

G Bm7 C C D Em D

28

8 Chorus - Delay / fingerpicking

G Bm7 C C D Em D

32

8

Em Am Dsus4 D7 G Em Am7 D7sus4 D

36

8

Em Am Dsus4 D7 G Em Am7 D7sus4 D

40

8

Chorus 2

G C/e D/f# B/d# Em A/C# Dsus4 D Dsus4/e D/f#

44

8

G C/e D/f# B/d# Em A/C# D D7/c

48

8

© www.ChorusOnline.com / 0031 (0) 6 - 41 57 77 56

Bass Guitar



Hard to Say I'm Sorry

Words and Music by David Foster and Peter Cetera
Arranged by Dirk Kokx
Original Key E major

Steady, with an inner drive

Intro G C/e D/f# B/d# Em A/C# D_{sus4} D Verse 1

mf

15 Em Am G/d D7 G Em Am7 D7_{sus4} D

Chorus 1 19 G C/e D/f# B/d# Em A/C# D_{sus4} D_{sus4}/e D/f#

23 G C/e D/f# B/d# Em A/C# D_{sus4} D D_{sus4} D

Verse 2 28 G Bm7 C C D Em D

32 G Bm7 C C D Em D

36 Em Am D_{sus4} D7 G Em Am7 D7_{sus4} D

40 Em Am D_{sus4} D7 G Em Am7 D7_{sus4} D

© www.ChorusOnline.com / 0031 (0) 6 - 41 57 77 56



Drum Set

Hard to Say I'm Sorry

Words and Music by David Foster and Peter Cetera
Arranged by Dirk Kokx
Original Key E major

Hi-Hat Pedal
Hi-Hat opened
Hi-Hat Closed
Snaredrum
Bassdrum
Snare rim (click)
Toms: High 1, High 2, Mid, Low
Ride heavy, Ride light, Ride cup
Claves
Cymbal Crash
Cymbal Splash
Triangle Open, Triangle Closed
Quiro
Shakers (Maracas)
Bells
Tambourine
Conga High, Conga Low

Steady, with an inner drive

Intro 6 Verse 1 12 Chorus 1 9 Verse 2

mf

30

36

small fill - 1

Chorus 2

44

© www.ChorusOnline.com / 0031 (0) 6 - 41 57 77 56

Hard to Say I'm Sorry

Words and Music by David Foster and Peter Cetera

Arranged by Dirk Kokx

Original Key E major

Intro Steady, with an inner drive

E A/c# B/d# G#/b# C#m F#/a#

Verse 1

4 B_{sus4} B E E

E-very-bo-dy needs a li-ttle time a-way

8 G#m7 A A B C#m B

I've heard you say from each ot-her

11 E G#m7 A A B

E-ven lo-vers need a ho-li-day far a-way from each

14 C#m B C#m F#m E/b B7 E

ot-her Hold me now It's hard for me to say I'm sor-ry

Chorus 1

17 C#m F#m7 B7sus4 B E A/c#

I just want you to stay Af-ter all that we've been through

Hard to Say I'm Sorry

Words and Music by David Foster and Peter Cetera

Arranged by Dirk Kokx

Original Key E major

Intro Steady, with an inner drive

G C/e D/f# B/d# Em A/C#

Verse 1

4 D_{sus4} D G G

E-very-bo-dy needs a li-ttle time a-way

8 B_{m7} C C D Em D

I've heard you say from each ot - her

11 G B_{m7} C C D

E-ven lo-vers need a ho - li - day far a-way from each

14 Em D Em Am G/d D7 G

ot - her Hold me now It's hard for me to say I'm sor - ry

Chorus 1

17 Em Am7 D7sus4 D G C/e

I just want you to stay Af - ter all that we've been through



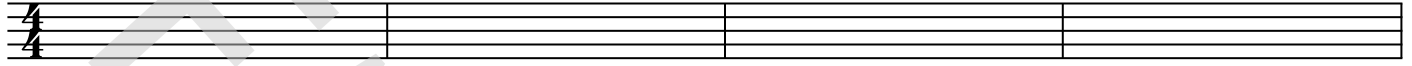
Empty paper

Hard to Say I'm Sorry

Words and Music by David Foster and Peter Cetera
Arranged by Dirk Kokx
Original Key E major

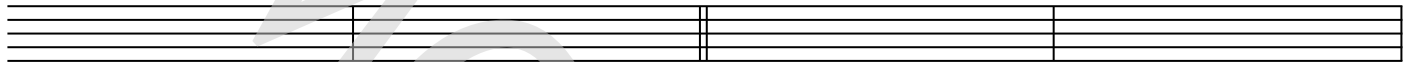
Steady, with an inner drive

Intro

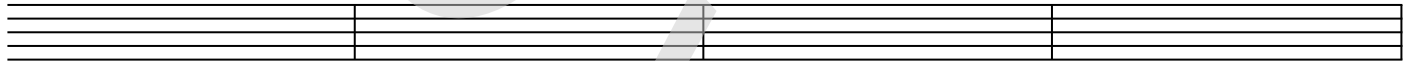


Verse 1

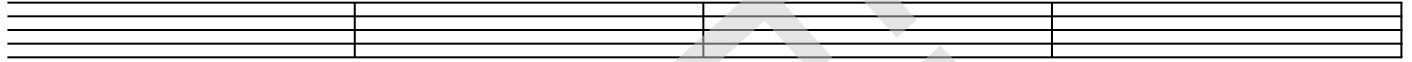
5



9

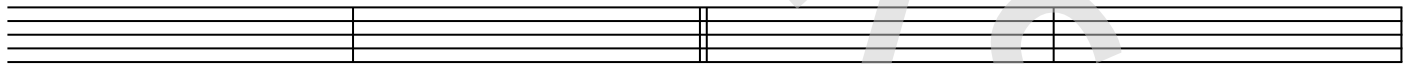


13

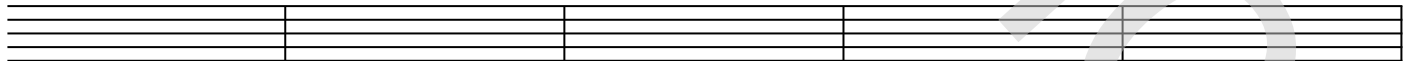


Chorus 1

17



21

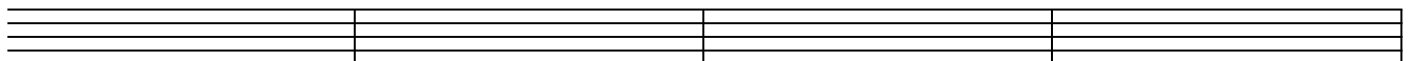


Verse 2

26



30



Hard To Say I'm Sorry

"Everybody needs a little time away,"

I heard her say, "from each other."

"Even lover's need a holiday
far away from each other."

Hold me now.

It's hard for me to say I'm sorry.

I just want you to stay.

After all that we've been through,

I will make it up to you. I promise to.

And after all that's been said and done,

You're just the part of me I can't let go.

Couldn't stand to be kept away

just for the day from your body.

Wouldn't wanna be swept away,

far away from the one that I love.

Hold me now.

It's hard for me to say I'm sorry.

I just want you to know.

Hold me now.

I really want to tell you I'm sorry.

I could never let you go.

After all that we've been through,

I will make it up to you. I promise to.

And after all that's been said and done,

You're just the part of me I can't let go.

After all that we've been through,

I will make it up to you. I promise to.

You are gonna be the lucky one.