



Merry Christmas Everyone – Shakin’Stevens - Chorus-LIGHT

Pag.

02	Full score combo C instrument
14	Full score combo Bb instrument
26	Full score combo Eb instrument
38	Full score combo 4 extra staves
55	Full score small combo
71	Full score small combo 2 extra staves
92	Full score vocals (HIGH – MID - LOW) Piano Advanced
108	Full score vocals (HIGH – MID - LOW) Piano Intermediate
124	Vocals (HIGH – MID - LOW)
135	C instrument
137	Bb instrument
139	Eb instrument
141	Piano Advanced
148	Piano Intermediate
155	Synthesizer
159	Guitar
162	Bassguitar
165	Drumkit
168	Percussion
171	Leadsheet (melody, lyrics, chords)
176	Empty paper
181	Lyrics



01 Chorus-LIGHT Combo C

Merry Christmas Everyone

- Shakin' Stevens -

Words and Music by Bob Heatlie
Arranged by Hans Reintjes
Original Key A Major

DEMO

DEMO

Light swing $\text{♩} = 98$

Intro

Musical score for various instruments including HIGH, MID, LOW, C Instr., Piano Adv., Synthesizer, Guitar, Bass Guitar, Drum Set, and Percussion. The score includes lyrics: "Ooh. Snow is".

Chords: A, C[#]7/G[#], F[#]m, D, A, E, A

Percussion: Sleigh Bells

© www.ChorusOnline.com / 0031 (0) 6 - 41 57 77 56

Merry Christmas Everyone 3

01 Chorus-LIGHT Combo C

Verse 2

25

H
- - ties and ce - le - bra - tions, Time for

M
peo - ple danc - ing all night long. Time for

L
- - ties and ce - le - bra - tions, peo - ple danc - ing all night long.

C
A C#7/G# F#m D A D A E

P.A.
Piano accompaniment with chords and bass line.

Synth
Synthesizer accompaniment.

Gr.
Electric Guitar (Muted)

Bass
Bass line.

D. S.
Drum set accompaniment.

Perc.
Percussion accompaniment.

33

H
pre - sents and ex - chang - ing kiss - es, time for sing - ing Christ - mas songs.

M
pre - sents and ex - chang - ing kiss - es, time for sing - ing Christ - mas songs.

L
and ex - chang - ing kiss - es, time for sing - ing Christ - mas songs.

C
A C#7/G# F#m D A E A E

P.A.
Piano accompaniment with chords and bass line.

Synth
Synthesizer accompaniment. Includes *Brass Section* and *Tubular Bells*.

Gr.
Electric Guitar (Muted)

Bass
Bass line.

D. S.
Drum set accompaniment.

Perc.
Percussion accompaniment.

Merry Christmas Everyone 5

01 Chorus-LIGHT Combo C

57

H Shoo-bi - doo - bi bap All — I wish that Whoo. ————— What a nice way to spend the

M hear. All — I wish that ev - 'ry day was Christ - mas. ————— What a nice way to spend the

L hear. ————— Whoo. ————— What a nice way to spend the

C A E A C#7/G# F#m D A E

P.A.

Synth

Gtr.

Bass

D. S.

Perc.

65

Instrumental solo

H year. ————— Whoo. ————— whoo. —————

M year. ————— Whoo. ————— whoo. —————

L year. ————— Whoo. ————— whoo. —————

C *Solo (optional)* A A C#7/G# F#m D A E

P.A.

Tenor Sax (optional)

Synth

Gtr.

Bass

D. S.

Perc.

Merry Christmas Everyone 7

01 Chorus-LIGHT Combo C

Verse 4

89

H un - der neath the mis - tle - toe, we'll kiss bij can - dle - light. Snow is fal - ling all a - round me, child - ren

M un - der neath the mis - tle - toe, we'll kiss bij can - dle - light. Snow is fal - ling all a - round me, child - ren

L un - der neath the mis - tle - toe, we'll kiss bij can - dle - light. Snow is fal - ling all a - round me,

C

P.A. A E sus4 E A C#7/G# F#m D

Synth

Gtr.

Bass

D. S.

Perc. *Sleigh Bells*

97

H play - ing, hav - ing fun. It's the sea - son, Whoo... mer - ry

M play - ing, hav - ing fun. It's the sea - son, love and un - der - stand - ing, mer - ry

L hav - ing fun. Whoo... mer - ry

C

P.A. A D A E A C#7/G# F#m D

Synth

Gtr.

Bass

D. S.

Perc.

Merry Christmas Everyone 9

01 Chorus-LIGHT Combo C

Verse 5

121

H
— Snow is fal - ling Snow is fal - ling child - ren play - ing,

M
— Snow is fal - ling all a - round me, child - ren play - ing, hav - ing

L
— Snow is fal - ling all a - round me, child - ren play - ing,

C
A B D^{#7}/A[#] G^{#m} E B E

P.A.
A B D^{#7}/A[#] G^{#m} E B E

Synth
Brass Section

Gtr.

Bass

D. S.

Perc.

129

H
hav - ing fun. It's the sea - son, Who... mer - ry Christ - mas ev - 'ry -

M
fun. It's the sea - son, love and un - der - stand - ing, mer - ry Christ - mas ev - 'ry -

L
hav - ing fun. Who... mer - ry Christ - mas ev - 'ry -

C
B F[#] B D^{#7}/A[#] G^{#m} E B F[#]

P.A.
B F[#] B D^{#7}/A[#] G^{#m} E B F[#]

Synth

Gtr.

Bass

D. S.

Perc.

Merry Christmas Everyone 11

01 Chorus-LIGHT Combo C

Verse 7

153

H one. Snow is fal - ling Snow is fal - ling child - ren play - ing,

M one. Oh Snow is fal - ling all a - round me, child - ren play - ing, hav - ing

L one. Shoo-bi-doo-bi doo - bi - doo - bap. Shoo-bi-doo-bi doo - bi - doo - bap. Shoo-bi-doo-bi doo - bi - doo - bap.

C B B D[#]/A[#] G^{#m} E B E

P.A.

Synth

Gtr.

Bass

D. S.

Perc.

161

H hav - ing fun. It's the sea - son, Whoop - mer - ry Christ - mas ev - ry -

M fun. It's the sea - son, love and un - der - stand - ing, mer - ry Christ - mas ev - ry -

L hav - ing fun. Shoo-bi-doo-bi doo - bi - doo - bap. Shoo-bi-doo-bi bap. mer - ry Christ - mas ev - ry -

C B F[#] B D[#]/A[#] G^{#m} E B F[#]

P.A.

Synth

Gtr.

Bass

D. S.

Perc.



02 Chorus-LIGHT Combo Bb

Merry Christmas Everyone

- Shakin' Stevens -

Words and Music by Bob Heatlie
Arranged by Hans Reintjes
Original Key A Major

Light swing ♩ = 98

Intro

Musical score for various instruments including vocal parts (HIGH, MID, LOW), Bb Instr., Piano Adv., Synthesizer (Vibraphone), Guitar, Bass Guitar, Drum Set, and Percussion (Sleigh Bells).

Chords: A, C#7/G#, F#m, D, A, E, A

Lyrics: Ooh... Snow is

© www.ChorusOnline.com / 0031 (0) 6 - 41 57 77 56



Merry Christmas Everyone 3

02 Chorus-LIGHT Combo Bb

Verse 2

25

H
- - ties and ce - le - bra - tions, Time for

M
peo - ple danc - ing all night long. Time for

L
- - ties and ce - le - bra - tions, peo - ple danc - ing all night long.

Bb

P.A.
A C#7/G# F#m D A D A E

Synth

Gtr. *Electric Guitar (Muted)*

Bass

D. S.

Perc.

H
pre - sents and ex - chang - ing kiss - es, time for sing - ing Christ - mas songs.

M
pre - sents and ex - chang - ing kiss - es, time for sing - ing Christ - mas songs.

L
and ex - chang - ing kiss - es, time for sing - ing Christ - mas songs.

Bb

P.A.
A C#7/G# F#m D A E A E

Synth
Brass Section
Tubular Bells

Gtr.

Bass

D. S.

Perc.

Merry Christmas Everyone 5

02 Chorus-LIGHT Combo Bb

57

H
Shoo-bi - doo - bi bap All I wish that Whoo. What a nice way to spend the

M
hear. All I wish that ev - 'ry day was Christ - mas. What a nice way to spend the

L
hear. Whoo. What a nice way to spend the

Bb

P.A
A E A C#7/G# F#m D A E

Synth

Gtr.

Bass

D. S.

Perc.

65

Instrumental solo

H
year. Whoo. whoo.

M
year. Whoo. whoo.

L
year. Whoo. whoo.

Bb
Solo (optional)
A A C#7/G# F#m D A E

P.A

Synth
Tenor Sax (optional)

Gtr.

Bass

D. S.

Perc.

Merry Christmas Everyone 7

02 Chorus-LIGHT Combo Bb

Verse 4

89

H un - der neath the mis - tle - toe, we'll kiss bij can - dle - light. Snow is fal - ling all a - round me, child - ren

M un - der neath the mis - tle - toe, we'll kiss bij can - dle - light. Snow is fal - ling all a - round me, child - ren

L un - der neath the mis - tle - toe, we'll kiss bij can - dle - light. Snow is fal - ling all a - round me,

P.A. A E^{sus4} E A C^{#7}/G[#] F^{#m} D

Synth

Gtr.

Bass

D. S.

Perc. *Sleigh Bells*

97

H play - ing, hav - ing fun. It's the sea - son, Whoo mer - ry

M play - ing, hav - ing fun. It's the sea - son, love and un - der - stand - ing, mer - ry

L hav - ing fun. Whoo mer - ry

P.A. A D A E A C^{#7}/G[#] F^{#m} D

Synth

Gtr.

Bass

D. S.

Perc.

Merry Christmas Everyone 9

02 Chorus-LIGHT Combo Bb

Verse 5

121

H — Snow is fal - ling Snow is fal - ling child - ren play - ing,

M — Snow is fal - ling all a - round me, child - ren play - ing, hav - ing

L — Snow is fal - ling all a - round me, child - ren play - ing,

Bb

P.A. A B D#7/A# G#m E B E

Synth *Brass Section*

Gtr.

Bass

D. S.

Perc.

129

H hav - ing fun. It's the sea - son, Who... mer - ry Christ - mas ev - 'ry -

M fun. It's the sea - son, love and un - der - stand - ing, mer - ry Christ - mas ev - 'ry -

L hav - ing fun. Who... mer - ry Christ - mas ev - 'ry -

Bb

P.A. B F# B D#7/A# G#m E B F#

Synth

Gtr.

Bass

D. S.

Perc.

Merry Christmas Everyone 11

02 Chorus-LIGHT Combo Bb

Verse 7

153

H one. Snow is fal - ling Snow is fal - ling child - ren play - ing.

M one. Oh Snow is fal - ling all a - round me, child - ren play - ing, hav - ing

L one. Shoo-bi-doo-bi doo - bi - doo - bap. Shoo-bi-doo-bi doo - bi - doo - bap. Shoo-bi-doo-bi doo - bi - doo - bap.

Bb

P.A. B B D#7/A# G#m E B E

Synth

Gtr.

Bass

D. S.

Perc.

161

H hav - ing fun. It's the sea - son, Who... mer - ry Christ - mas ev - ry -

M fun. It's the sea - son, love and un - der - stand - ing, mer - ry Christ - mas ev - ry -

L hav - ing fun. Shoo-bi-doo-bi doo - bi - doo - bap. Shoo-bi-doo-bi bap. mer - ry Christ - mas ev - ry -

Bb

P.A. B F# B D#7/A# G#m E B F#

Synth

Gtr.

Bass

D. S.

Perc.



03 Chorus-LIGHT Combo Eb

Merry Christmas Everyone

- Shakin' Stevens -

Words and Music by Bob Heatlie
Arranged by Hans Reintjes
Original Key A Major

Light swing $\text{♩} = 98$

Intro

Musical score for various instruments including vocal parts (HIGH, MID, LOW), Eb Instr., Piano Adv., Synthesizer (Vibraphone), Guitar, Bass Guitar, Drum Set, and Percussion (Sleigh Bells).

Lyrics: Ooh... Snow is

Chords: A, C#7/G#, F#m, D, A, E, A

© www.ChorusOnline.com / 0031 (0) 6 - 41 57 77 56



Merry Christmas Everyone 3

03 Chorus-LIGHT Combo Eb

Verse 2

23

H
- - ties and ce - le - bra - tions, Time for

M
peo - ple danc - ing all night long. Time for

L
- - ties and ce - le - bra - tions, peo - ple danc - ing all night long.

Eb

P.A.
A C#7/G# F#m D A D A E

Synth

Gtr. *Electric Guitar (Muted)*

Bass

D. S.

Perc.

H
pre - sents and ex - chang - ing kiss - es, time for sing - ing Christ - mas songs.

M
pre - sents and ex - chang - ing kiss - es, time for sing - ing Christ - mas songs.

L
and ex - chang - ing kiss - es, time for sing - ing Christ - mas songs.

Eb

P.A.
A C#7/G# F#m D A E A E

Synth
Brass Section
Tubular Bells

Gtr.

Bass

D. S.

Perc.

Merry Christmas Everyone 5

03 Chorus-LIGHT Combo Eb

57

H
Shoo-bi-doo-bi bap All I wish that Whoo. What a nice way to spend the

M
hear. All I wish that ev-'ry day was Christ-mas. What a nice way to spend the

L
hear. Whoo. What a nice way to spend the

Eb
A E A C#7/G# F#m D A E

P.A.
Piano accompaniment with chords and bass line.

Synth
Synthesizer accompaniment.

Gtr.
Guitar accompaniment.

Bass
Bass line.

D.S.
Drum set accompaniment.

Perc.
Percussion accompaniment.

65

Instrumental solo

H
year. Whoo. whoo.

M
year. Whoo. whoo.

L
year. Whoo. whoo.

Eb
Solo (optional)
A A C#7/G# F#m D A E

P.A.
Piano accompaniment with chords and bass line.

Synth
Tenor Sax (optional)
Synthesizer accompaniment.

Gtr.
Guitar accompaniment.

Bass
Bass line.

D.S.
Drum set accompaniment.

Perc.
Percussion accompaniment.

Merry Christmas Everyone 7

03 Chorus-LIGHT Combo Eb

Verse 4

89

H un - der neath the mis - tle - toe, we'll kiss bij can - dle - light. Snow is fal - ling all a - round me, child - ren

M un - der neath the mis - tle - toe, we'll kiss bij can - dle - light. Snow is fal - ling all a - round me, child - ren

L un - der neath the mis - tle - toe, we'll kiss bij can - dle - light. Snow is fal - ling all a - round me,

Eb

P.A. A E sus4 E A C#7/G# F#m D

Synth

Gtr.

Bass

D. S.

Perc. *Sleigh Bells*

97

H play - ing, hav - ing fun. It's the sea - son, Whoo. mer - ry

M play - ing, hav - ing fun. It's the sea - son, love and un - der - stand - ing. mer - ry

L hav - ing fun. Whoo. mer - ry

Eb

P.A. A D A E A C#7/G# F#m D

Synth

Gtr.

Bass

D. S.

Perc.

Merry Christmas Everyone 9

03 Chorus-LIGHT Combo Eb

121 Verse 5

H — Snow is fal - ling Snow is fal - ling child - ren play - ing,

M — Snow is fal - ling all a - round me, child - ren play - ing, hav - ing

L — Snow is fal - ling all a - round me, child - ren play - ing,

Eb

P.A. A B D^{#7}/A[#] G^{#m} E B E

Synth *Brass Section*

Gtr.

Bass

D. S.

Perc.

129

H hav - ing fun. It's the sea - son, Who... mer - ry Christ - mas ev - 'ry -

M fun. It's the sea - son, love and un - der - stand - ing, mer - ry Christ - mas ev - 'ry -

L hav - ing fun. Who... mer - ry Christ - mas ev - 'ry -

Eb

P.A. B F[#] B D^{#7}/A[#] G^{#m} E B F[#]

Synth

Gtr.

Bass

D. S.

Perc.

Merry Christmas Everyone 11

03 Chorus-LIGHT Combo Eb

Verse 7

153

H one. Snow is fal - ling Snow is fal - ling child - ren play - ing,

M one. Oh Snow is fal - ling all a - round me, child - ren play - ing, hav - ing

L one. Shoo-bi-doo-bi doo - bi - doo - bap. Shoo-bi-doo-bi doo - bi - doo - bap. Shoo-bi-doo-bi doo - bi - doo - bap.

Eb

P.A. B B D#7/A# G#m E B E

Synth

Gtr.

Bass

D. S.

Perc.

161

H hav - ing fun. It's the sea - son, Who... mer - ry Christ - mas ev - ry -

M fun. It's the sea - son, love and un - der - stand - ing, mer - ry Christ - mas ev - ry -

L hav - ing fun. Shoo-bi-doo-bi doo - bi - doo - bap. Shoo-bi-doo-bi bap. mer - ry Christ - mas ev - ry -

Eb

P.A. B F# B D#7/A# G#m E B F#

Synth

Gtr.

Bass

D. S.

Perc.

Light swing $\text{♩} = 98$

04 Chorus-LIGHT 4 extra staves

Merry Christmas Everyone

- Shakin' Stevens -

*Words and Music by Bob Heatie
Arranged by Hans Reintjes
Original Key A Major*

Intro

HIGH
MID
LOW

1
2
3
4

A C#7/G# F#m D A E A A C#7/G# F#m

Synthesizer
Piano Adv.
Guitar
Bass Guitar
Drum Set
Percussion

Shakin' Beats

Verso 1
Snow is fall - ling all a - round me.

Chorus
Ooh
Ooh
Ooh

Merry Christmas Everyone 3
04 Chorus-LIGHT 4 extra staves

Verse 2

23

H one. Time for par - ties and ce - le - bra - tions. Time for pre - sents

M one. Time for par - ties and ce - le - bra - tions. peo - ple dance - ing all night long Time for pre - sents

L one. Time for par - ties and ce - le - bra - tions. peo - ple dance - ing all night long

1 A A C#7/G# F#m D A A D A E A

2

3

4

P.A. A A C#7/G# F#m D A A D A E A

Bass Section

Bass Section

Synth

Electric Guitar (Muted)

Dr. Perc.

D.S.

BASS

PERC.

Merry Christmas Everyone 5

04 Chorus-LIGHT 4 extra staves

Verse 3

45

H Who-o-o-o-o-o-o-o-o-o-o un - der neath the mis - tie - toe, we'll kiss bj| can - die - light. Room is sway - ing re - cords play - ing, Shoo - bi - doo - bi

M I'm gon - na find that girl un - der neath the mis - tie - toe, we'll kiss bj| can - die - light. Shoo - bi - doo - bi bap bap Shoo - bi - doo - bi bap all the old songs

L Who-o-o-o-o-o-o-o-o-o-o un - der neath the mis - tie - toe, we'll kiss bj| can - die - light. Room is sway - ing re - cords play - ing, all the old songs

1

2

3

4

P.A. F#m D/F# A E sus4 E A C#7/G# F#m D A

Synth

Drum Section

Drum

BASS

D. S.

Perc.

String Bells

Merry Christmas Everyone 7

04 Chorus-LIGHT 4 extra staves

Instrumental solo

07

H
Whoo, _____
whoo _____
Shoo-bi - doo - bi
doo - bi - doo - bap
Shoo-bi - doo - bi

M
Whoo, _____
whoo _____
Shoo-bi - doo - bi
doo - bi - doo - bap
Shoo-bi - doo - bi

L
Whoo, _____
whoo _____
Shoo-bi - doo - bi
doo - bi - doo - bap
Shoo-bi - doo - bi

1
2
3
4

P.A.
A C#7/G# F#m D A E A E A C#7/G# F#m

Synth

Git.

BASS

D. S.

Perc.

Merry Christmas Everyone 9
04 Chorus-LIGHT 4 extra staves

89 Verse 4

H un - der reath the mis - tie - toe, we'll kiss bj| can - die - light. Snow is fal - ling all _____ a - round _____ me; child - ren play - ing. hav - ing fun.

M un - der reath the mis - tie - toe, we'll kiss bj| can - die - light. Snow is fal - ling all _____ a - round _____ me; child - ren play - ing. hav - ing fun.

L un - der reath the mis - tie - toe, we'll kiss bj| can - die - light. Snow is fal - ling all _____ a - round _____ me; child - ren play - ing. hav - ing fun.

1
2
3
4

A E sus4 E A C#7/G# F#m D A D A

Synth
Gtr.
BASS
D. S.
Perc.
Sleigh Bells

Merry Christmas Everyone 11
 04 Chorus-LIGHT 4 extra staves

Interlude

H one. Ooh mer - ry Christ - mas ev - 'ry - one. Ooh

M one. Ooh mer - ry Christ - mas ev - 'ry - one. Ooh

L one. Ooh mer - ry Christ - mas ev - 'ry - one. Ooh

1 F#m D A E A C#7/G# F#m D A E A

2

3

4

Synth 8 8 *Vibrato* 8 8

Dir.

Bass

D. S.

Perc.

Merry Christmas Everyone 13

04 Chorus-LIGHT 4 extra staves

Verse 6

133

H _____ mer - ry Christ - mas ev - 'ry - one. Snow is fal - ling Snow is fal - ling child - ren

M stand - ing, _____ mer - ry Christ - mas ev - 'ry - one. Snow is fal - ling all _____ a - round _____ me. child - ren play - ing.

L _____ mer - ry Christ - mas ev - 'ry - one. Snow is fal - ling all a - round me. child - ren

1 _____

2 _____

3 _____

4 _____

G^{♯m} E B G[♯] B D^{♯7/A[♯]} G^{♯m} E B

Synth _____

Dr. _____

Bass _____

D. S. _____

Perc. _____

Merry Christmas Everyone 15

04 Chorus-LIGHT 4 extra staves

Verse 7
1-5

H Snow is fal - ling Snow is fal - ling child - ren play - ing, hav - ing fun. It's the sea - son, Who -

M fal - ling all - a-round me, child - ren play - ing, hav - ing fun. It's the sea - son, love and un - der - stand - ing -

L Snoo - bi - doo - bi doo - bi - doo - bap, Snoo - bi - doo - bi doo - bi - doo - bap, Snoo - bi - doo - bi doo - bi - doo - bap, hav - ing fun, Snoo - bi - doo - bi doo - bi - doo - bap, Snoo - bi - doo - bi doo - bi - doo - bap

1
2
3
4

B D#7/A# G#m E B E B F# B D#7/A# G#m

Synth

Chor.

BASS

D. S.

Perc.

Merry Christmas Everyone 17
04 Chorus-LIGHT 4 extra staves

Coda

H one: Ooh _____ Christ - mas!

M one: Ooh _____ Christ - mas!

L one: Ooh _____ Christ - mas!

1

2

3

4

B D⁷/A⁺ G^{#m} E B F[#] B

P.A.

Synth

Chor.

Bass

D. S.

Perc.

Bass Section



05 Chorus-LIGHT small Combo

Merry Christmas Everyone

- Shakin' Stevens -

Words and Music by Bob Heatlie
Arranged by Hans Reintjes
Original Key A Major

Light swing $\text{♩} = 98$

Intro

Musical score for Intro, featuring vocal lines (HIGH, MID, LOW), Piano Adv., Guitar, Bass Guitar, Drum Set, and Percussion (Sleigh Bells). The score is in 4/4 time with a key signature of one sharp (F#).

Chord progression for Piano Adv. and Bass Guitar:

- A
- C⁷/G[#]
- F^{#m}
- D
- A
- E

Vocal lines include the word "Ooh..." in the HIGH, MID, and LOW parts.

© www.ChorusOnline.com / 0031 (0) 6 - 41 57 77 56

Merry Christmas Everyone 3

05 Chorus-LIGHT small Combo

19

H stand - ing, mer - ry Christ - mas ev - 'ry - one. Time for par -

M stand - ing, mer - ry Christ - mas ev - 'ry - one.

L stand - ing, mer - ry Christ - mas ev - 'ry - one. Time for par -

PA $F\#^m$ D A E A

Gr.

Bass

D. S.

Perc.

Verse 2
25

H - - ties and ce - le - bra - tions, peo - ple danc - ing all night

M - - ties and ce - le - bra - tions, peo - ple danc - ing all night

L - - ties and ce - le - bra - tions, peo - ple danc - ing all night

PA A $C\#^7/G\#$ $F\#^m$ D A D

Gr. *Electric Guitar (Muted)*

Bass

D. S.

Perc.

Merry Christmas Everyone 5

05 Chorus-LIGHT small Combo

43

H
par - ty to - night. _____ Whoo, _____ un - der neath the mis - tle - toe, we'll

M
par - ty to - night. _____ I'm gon - na find that girl un - der neath the mis - tle - toe, we'll

L
par - ty to - night. _____ Whoo, _____ un - der neath the mis - tle - toe, we'll

P.A.
A/E E F#m D/F# A

Grtr.
Bass
D. S.
Perc.

49

Verse 3

H
kiss bij can - dle - light. Room is sway - ing re - cords play - ing,

M
kiss bij can - dle - light. Shoo - bi - doo - bi bap bap. Shoo - bi - doo - bi bap all the

L
kiss bij can - dle - light. Room is sway - ing re - cords play - ing, all the

P.A.
E^{sus4} E A C#⁷/G# F#m D

Grtr.
Bass
D. S.
Perc.
Sleigh Bells

Merry Christmas Everyone 7

05 Chorus-LIGHT small Combo

Instrumental solo

67

H
Whoo, _____ whoo. _____

M
Whoo. _____ whoo. _____

L
Whoo, _____ whoo. _____

PA
A C#7/G# F#m D A E

Gr.
Bass
D. S.
Perc.

73

H
Shoo-bi - doo - bi doo - bi - doo - bap. Shoo-bi - doo - bi doo - bi - doo - bap.

M
Shoo-bi - doo - bi doo - bi - doo - bap. Shoo-bi - doo - bi doo - bi - doo - bap.

L
Shoo-bi - doo - bi doo - bi - doo - bap. Shoo-bi - doo - bi doo - bi - doo - bap.

PA
A E A C#7/G# F#m D

Gr.
Bass
D. S.
Perc.

Merry Christmas Everyone 9
05 Chorus-LIGHT small Combo

Verse 4

91

H
kiss bij can - dle - light. Snow is fal - ling all a - round me, child - ren

M
kiss bij can - dle - light. Snow is fal - ling all a - round me, child - ren

L
kiss bij can - dle - light. Snow is fal - ling all a - round me,

P.A.
E^{sus4} E A C#⁷/G# F#^m D

Gr.
Bass
D. S.
Perc.
Sleigh Bells

97

H
play - ing, hav - ing fun. It's the sea - son, Whoo.

M
play - ing, hav - ing fun. It's the sea - son, love and un - der -

L
hav - ing fun. Whoo.

P.A.
A D A E A C#⁷/G#

Gr.
Bass
D. S.
Perc.

Merry Christmas Everyone 11

05 Chorus-LIGHT small Combo

Interlude
115

H
one. Ooh.

M
one. Ooh.

L
one. Ooh.

PA
A C#7/G# F#m D A E

Gr.

Bass

D. S.

Perc.

Verse 5
121

H
Snow is fal - ling Snow is fal - ling

M
Snow is fal - ling all a - round me, child - ren

L
Snow is fal - ling all a - round me,

PA
A B D#7/A# G#m E

Gr.

Bass

D. S.

Perc.

Merry Christmas Everyone 13

05 Chorus-LIGHT small Combo

Verse 6

139

H
Snow is fal - ling Snow is fal - ling child - ren play - ing,

M
fal - ling all a - round me, child - ren play - ing, hav - ing

L
Snow is fal - ling all a - round me, child - ren play - ing,

P.A.
B D#7/A# G#m E B E

Gr.
Bass
D. S.
Perc.

145

H
hav - ing fun. It's the sea - son, Whoo. mer - ry

M
fun. It's the sea - son, love and un - der - stand - ing, mer - ry

L
hav - ing fun. Whoo. mer - ry

P.A.
B F# B D#7/A# G#m E

Gr.
Bass
D. S.
Perc.

Merry Christmas Everyone 15

05 Chorus-LIGHT small Combo

163

H
son, Whoo. mer - ry Christ - mas ev - 'ry -

M
son, love and un - der - stand - ing, mer - ry Christ - mas ev - 'ry -

L
Shoo - bi - doo - bi doo - bi - doo - bap, Shoo - bi - doo - bi bap, mer - ry Christ - mas ev - 'ry -

PA
B D#7/A# G#m E B F#

Gr.

Bass

D. S.

Perc.

169

H
one. mer - ry Christ - mas ev - 'ry - one. Oh mer - ry

M
one. mer - ry Christ - mas ev - 'ry - one. Oh mer - ry

L
one. mer - ry Christ - mas ev - 'ry - one. Oh mer - ry

PA
B B F# B G#m E

Gr.

Bass

D. S.

Perc.

06 Chorus-LIGHT small Combo extra staves

Merry Christmas Everyone

- Shakin' Stevens -

Words and Music by Bob Heathie
Arranged by Hans Reintjes
Original Key A Major

Light swing $\frac{1}{2} = 98$

Intro

HIGH
MID
LOW

1
2

A C#7/G# F#m D A E A A

Ooh _____
Ooh _____
Ooh _____

Snow is fall - ling

Verse 1

Guitar
Bass Guitar
Drum Set
Percussion

Piano Adv.

Steigh Bells

Merry Christmas Everyone 3
 06 Chorus-LIGHT small Combo extra staves

Verse 2

19

H stand - ing, mer - ry Christ - mas ev - 'ry - one. Time for par - ties and ce - le - bra - tions.

M stand - ing, mer - ry Christ - mas ev - 'ry - one. Time for par - ties and ce - le - bra - tions.

L stand - ing, mer - ry Christ - mas ev - 'ry - one. Time for par - ties and ce - le - bra - tions.

1

2

F#m D A E A A C#7/G# F#m

Electric Guitar (Muted)

Gtr.

Bass

D. S.

Perc.

Merry Christmas Everyone 5
06 Chorus-LIGHT small Combo extra staves

Chorus 1

37

H
sing - ing Christ - mas songs. We have a par - ty to - night. Who, _____

M
sing - ing Christ - mas songs. We're gon - na have a par - ty to - night. I'm gon - na

L
sing - ing Christ - mas songs. We have a par - ty to - night. Who, _____

1
2

PA
A E A E F#m D/F# A/E E F#m

Gtr.
8

Bass

D. S.

Perc.
Tambourine

Merry Christmas Everyone 7
06 Chorus-LIGHT small Combo extra staves

55

H Shoo-bi-doo-bi bap bap. Shoo-bi-doo-bi bap All ___ I wish that Whoo. _____ What a nice way

M old songs we love to hear. All ___ I wish that ev - 'ry day was Christ - mas. ___ What a nice way

L old songs we love to hear. Whoo. _____ What a nice way

1
2

A D A E A C#7/G# F#m D A

PA

Gtr.

Bass

D. S.

Perc.

Merry Christmas Everyone 9
06 Chorus-LIGHT small Combo extra staves

7/3

H — Shoo-bi-doo-bi doo-bi-doo-bap. Shoo-bi-doo-bi doo-bi-doo-bap. Shoo-bi-doo-bi doo-bi-doo-bap. Shoo-bi-doo-bi

M — Shoo-bi-doo-bi doo-bi-doo-bap. Shoo-bi-doo-bi doo-bi-doo-bap. Shoo-bi-doo-bi doo-bi-doo-bap. Shoo-bi-doo-bi

L — Shoo-bi-doo-bi doo-bi-doo-bap. Shoo-bi-doo-bi doo-bi-doo-bap. Shoo-bi-doo-bi doo-bi-doo-bap. Shoo-bi-doo-bi

1

2

PA A E A C[#]7/G[#] F[#]m D A E A

Gtr. 8

Bass

D. S.

Perc.

Merry Christmas Everyone 11
06 Chorus-LIGHT small Combo extra staves

Verse 4

91

H Kiss bij can - die - light. Snow is fal - ling all — a - round — me, child - ren play - ing. hav - ing fun.

M Kiss bij can - die - light. Snow is fal - ling all — a - round — me, child - ren play - ing. hav - ing fun.

L Kiss bij can - die - light. Snow is fal - ling all a - round me. hav - ing

1

2

PA E sus4 E A C#7/G# F#m D A D A

Gtr. 8

Bass

D. S.

Perc. Sleigh Bells

Merry Christmas Everyone 13
 06 Chorus-LIGHT small Combo extra staves

Interlude

109

H
 Christ - mas ev - 'ry - one. Ooh mer - ry Christ - mas ev - 'ry - one.

M
 Christ - mas ev - 'ry - one. Ooh mer - ry Christ - mas ev - 'ry - one.

L
 Christ - mas ev - 'ry - one. Ooh mer - ry Christ - mas ev - 'ry - one.

1
 2

PA
 A E F#m D A E A C#7/G# F#m

Gtr.
 8

Bass
 8

D. S.

Perc.

Merry Christmas Everyone 15
06 Chorus-LIGHT small Combo extra staves

127

H
child - ren play - ing, hav - ing fun. It's the sea - son, Whoo - _____ mer - ry Christ - mas

M
play - ing, hav - ing fun. It's the sea - son, love and un - der - stand - ing, _____ mer - ry Christ - mas

L
child - ren play - ing, hav - ing fun. Whoo - _____ mer - ry Christ - mas

1
2

PA
B E B F# B D#7/A# G#m E B

Gtr.
8

Bass
8

D. S.

Perc.

Merry Christmas Everyone 17
 06 Chorus-LIGHT small Combo extra staves

145

H
 hav - ing fun. It's the sea - son, Whoo. _____ mer - ry Christ - mas ev - 'ry - one.

M
 fun. It's the sea - son, love and un - der - stand - ing, _____ mer - ry Christ - mas ev - 'ry - one.

L
 hav - ing fun. Whoo. _____ mer - ry Christ - mas ev - 'ry - one.

1
 2

PA
 B F# B D#7/A# G#m E B F# B

Gtr.
 8

Bass
 8

D. S.

Perc.

Merry Christmas Everyone 19
06 Chorus-LIGHT small Combo extra staves

163

H
son, _____ Whoo, _____ mer - ry Christ - mas ev - 'ry - one. mer - ry Christ - mas

M
son, love and un - der - stand - ing, _____ mer - ry Christ - mas ev - 'ry - one. mer - ry Christ - mas

L
Shoo - bi - doo - bi doo - bi - doo - bap. Shoo - bi - doo - bi bap. mer - ry Christ - mas ev - 'ry - one. mer - ry Christ - mas

1
2

PA
B D#7/A# G#m E B F# B B

Gtr.
8

Bass
8

D. S.

Perc.



07 Chorus-LIGHT Piano Advanced

Merry Christmas Everyone

- Shakin' Stevens -

*Words and Music by Bob Heatlie
Arranged by Hans Reintjes
Original Key A Major*



Light swing ♩ = 98

Intro

Musical score for piano with three vocal parts (HIGH, MID, LOW) and piano accompaniment (Piano Adv.). The score is in 4/4 time with a key signature of two sharps (F# and C#). The tempo is marked as 'Light swing' with a quarter note equal to 98 beats per minute. The piano part includes a bass line and a treble line with chords. The vocal parts have lyrics 'Ooh...' written below the notes. The piano accompaniment includes the following chords: A, C#7/G#, F#m, D, A, E.

© www.ChorusOnline.com / 0031 (0) 6 - 41 57 77 56

Merry Christmas Everyone 3
07 Chorus-LIGHT Piano Advanced

19

H stand - ing, mer - ry Christ - mas ev - 'ry - one. Time for par -

M stand - ing, mer - ry Christ - mas ev - 'ry - one.

L stand - ing, mer - ry Christ - mas ev - 'ry - one. Time for par -

F#m D A E A

P.A.

Verse 2
25

H - ties and ce - le - bra - tions, peo - ple danc - ing all night

M - ties and ce - le - bra - tions, peo - ple danc - ing all night

L - ties and ce - le - bra - tions, peo - ple danc - ing all night

A C#7/G# F#m D A D

P.A.

43

H
par - ty to - night. _____ Whoo, _____ un - der neath the mis - tle - toe, we'll

M
par - ty to - night. _____ I'm gon - na find that girl un - der neath the mis - tle - toe, we'll

L
par - ty to - night. _____ Whoo, _____ un - der neath the mis - tle - toe, we'll

P.A
A/E E F#m D/F# A

Verse 3

49

H
kiss by can - dle - light. Room is sway - ing re - cords play - ing,

M
kiss by can - dle - light. Shoo - bi - doo - bi bap bap. Shoo - bi - doo - bi bap all the

L
kiss by can - dle - light. Room is sway - ing re - cords play - ing, all the

P.A
E sus4 E A C#7/G# F#m D

Merry Christmas Everyone 7
07 Chorus-LIGHT Piano Advanced

Instrumental solo

67

H
Whoo, _____ whooo. _____

M
Whoo, _____ whooo. _____

L
Whoo, _____ whooo. _____

P.A
A C#7/G# F#m D A E

73

H
— Shoo-bi-doo-bi doo-bi-doo-bap. Shoo-bi-doo-bi doo-bi-doo-bap.

M
— Shoo-bi-doo-bi doo-bi-doo-bap. Shoo-bi-doo-bi doo-bi-doo-bap.

L
— Shoo-bi-doo-bi doo-bi-doo-bap. Shoo-bi-doo-bi doo-bi-doo-bap.

P.A
A E A C#7/G# F#m D

Verse 4

91

H
kiss bij can - dle - light. Snow is fal - ling all a - round me, child - ren

M
kiss bij can - dle - light. Snow is fal - ling all a - round me, child - ren

L
kiss bij can - dle - light. Snow is fal - ling all a - round me,

P.A
E^{sus4} E A C#⁷/G# F#^m D

97

H
play - ing, hav - ing fun. It's the sea - son, Whoo. _____

M
play - ing, hav - ing fun. It's the sea - son, love and un - der -

L
hav - ing fun. Whoo. _____

P.A
A D A E A C#⁷/G#

Merry Christmas Everyone 11
07 Chorus-LIGHT Piano Advanced

Interlude
115

H
one. Ooh.

M
one. Ooh.

L
one. Ooh.

P.A.
A C#7/G# F#m D A E

Verse 5
121

H
— Snow is fal - ling Snow is fal - ling

M
— Snow is fal - ling all a - round me, child - ren

L
— Snow is fal - ling all a - round me,

P.A.
A B D#7/A# G#m E

Merry Christmas Everyone 13
07 Chorus-LIGHT Piano Advanced

Verse 6
139

H
Snow is fal - ling Snow is fal - ling child - ren play - ing,

M
fal - ling all ___ a - round ___ me, child - ren play - ing, hav - ing

L
Snow is fal - ling all a - round me, child - ren play - ing,

P.A
B D^{#7}/A[#] G^{#m} E B E

145

H
hav - ing fun. It's the sea - son, Whoo. _____ mer - ry

M
fun. It's the sea - son, love and un - der - stand - ing, ___ mer - ry

L
hav - ing fun. Whoo. _____ mer - ry

P.A
B F[#] B D^{#7}/A[#] G^{#m} E

Merry Christmas Everyone 15
07 Chorus-LIGHT Piano Advanced

163

H
son, Whoo. _____ mer - ry Christ - mas ev - 'ry -

M
son, love and un - der - stand - ing, _____ mer - ry Christ - mas ev - 'ry -

L
Shoo-bi-doo-bi doo-bi-doo-bap. Shoo-bi-doo-bi bap. mer - ry Christ - mas ev - 'ry -

P.A
B D#7/A# G#m E B F#

169

H
one. mer - ry Christ - mas ev - 'ry - one. _____ Oh mer - ry

M
one. mer - ry Christ - mas ev - 'ry - one. _____ Oh mer - ry

L
one. mer - ry Christ - mas ev - 'ry - one. _____ Oh mer - ry

P.A
B B F# B G#m E



08 Chorus-LIGHT Piano Intermediate

Merry Christmas Everyone

- Shakin' Stevens -

*Words and Music by Bob Heatlie
Arranged by Hans Reintjes
Original Key A Major*



Light swing ♩ = 98

Intro

Musical score for piano, including vocal lines (HIGH, MID, LOW) and piano accompaniment (Piano Interm.). The score is in 4/4 time with a key signature of two sharps (F# and C#). The piano part includes chords: A, C#7/G#, F#m, D, A, E.

HIGH: Ooh.
 MID: Ooh.
 LOW: Ooh.
 Piano Interm.: A, C#7/G#, F#m, D, A, E

© www.ChorusOnline.com / 0031 (0) 6 - 41 57 77 56

Merry Christmas Everyone 3
08 Chorus-LIGHT Piano Intermediate

19

H
stand - ing, mer - ry Christ - mas ev - 'ry - one. Time for par -

M
stand - ing, mer - ry Christ - mas ev - 'ry - one.

L
stand - ing, mer - ry Christ - mas ev - 'ry - one. Time for par -

P. I.
F#m D A E A

Verse 2
25

H
- ties and ce - le - bra - tions, peo - ple danc - ing all night

M
- ties and ce - le - bra - tions, peo - ple danc - ing all night

L
- ties and ce - le - bra - tions, peo - ple danc - ing all night

P. I.
A C#7/G# F#m D A D

Merry Christmas Everyone 5
08 Chorus-LIGHT Piano Intermediate

43

H
par - ty to - night. _____ Whoo, _____ un - der neath the mis - tle - toe, we'll

M
par - ty to - night. _____ I'm gon - na find that girl un - der neath the mis - tle - toe, we'll

L
par - ty to - night. _____ Whoo, _____ un - der neath the mis - tle - toe, we'll

P. I.
A/E E F#m D/F# A

Verse 3

49

H
kiss bij can - dle - light. Room is sway - ing re - cords play - ing,

M
kiss bij can - dle - light. Shoo - bi - doo - bi bap bap. Shoo - bi - doo - bi bap all the

L
kiss bij can - dle - light. Room is sway - ing re - cords play - ing, all the

P. I.
E^{sus4} E A C#7/G# F#m D

Merry Christmas Everyone 7
08 Chorus-LIGHT Piano Intermediate

Instrumental solo

67

H
Whoo, _____ whooo. _____

M
Whoo, _____ whooo. _____

L
Whoo, _____ whooo. _____

P. I.
A C#7/G# F#m D A E

73

H
— Shoo-bi-doo-bi doo-bi-doo-bap. Shoo-bi-doo-bi doo-bi-doo-bap.

M
— Shoo-bi-doo-bi doo-bi-doo-bap. Shoo-bi-doo-bi doo-bi-doo-bap.

L
— Shoo-bi-doo-bi doo-bi-doo-bap. Shoo-bi-doo-bi doo-bi-doo-bap.

P. I.
A E A C#7/G# F#m D

Merry Christmas Everyone 9
08 Chorus-LIGHT Piano Intermediate

Verse 4

91

H
kiss bij can - dle - light. Snow is fal - ling all ___ a - round ___ me, child - ren

M
kiss bij can - dle - light. Snow is fal - ling all ___ a - round ___ me, child - ren

L
kiss bij can - dle - light. Snow is fal - ling all a - round me,

P. I.
E^{sus4} E A C#7/G# F#m D

97

H
play - ing, hav - ing fun. It's the sea - son, Whoo. _____

M
play - ing, hav - ing fun. It's the sea - son, love and un - der -

L
hav - ing fun. Whoo. _____

P. I.
A D A E A C#7/G#

Merry Christmas Everyone 11
08 Chorus-LIGHT Piano Intermediate

Interlude

115

Sheet music for the Interlude section, measures 115-120. It features four staves: Soprano (H), Alto (M), Tenor (L), and Piano (P. I.). The key signature is one sharp (F#) and the time signature is 4/4. The lyrics "one. Ooh." are written below the vocal staves. The piano accompaniment includes chord markings: A, C#7/G#, F#m, D, A, and E.

Verse 5

121

Sheet music for Verse 5, measures 121-126. It features four staves: Soprano (H), Alto (M), Tenor (L), and Piano (P. I.). The key signature is one sharp (F#) and the time signature is 4/4. The lyrics are: "Snow is fal - ling Snow is fal - ling", "Snow is fal - ling all a - round me, child-ren", and "Snow is fal - ling all a - round me,". The piano accompaniment includes chord markings: A, B, D#7/A#, G#m, and E.

Merry Christmas Everyone 13
08 Chorus-LIGHT Piano Intermediate

Verse 6
139

H
Snow is fal - ling Snow is fal - ling child-ren play - ing,

M
fal - ling all ___ a - round ___ me, child-ren play - ing, hav - ing

L
Snow is fal - ling all a - round me, child-ren play - ing,

P. I.
B D#7/A# G#m E B E

145

H
hav - ing fun. It's the sea - son, Whoo. _____ mer - ry

M
fun. It's the sea - son, love and un - der - stand - ing, ___ mer - ry

L
hav - ing fun. Whoo. _____ mer - ry

P. I.
B F# B D#7/A# G#m E

Merry Christmas Everyone 15
08 Chorus-LIGHT Piano Intermediate

163

H
son, Whoo. _____ mer-ry Christ - mas ev - 'ry -

M
son, love and un - der - stand - ing, _____ mer-ry Christ - mas ev - 'ry -

L
Shoo-bi-doo-bi doo-bi-doo-bap. Shoo-bi-doo-bi bap. mer-ry Christ - mas ev - 'ry -

P. I.
B D#7/A# G#m E B F#

169

H
one. mer - ry Christ - mas ev - 'ry - one. _____ Oh mer - ry

M
one. mer - ry Christ - mas ev - 'ry - one. _____ Oh mer - ry

L
one. mer - ry Christ - mas ev - 'ry - one. _____ Oh mer - ry

P. I.
B B F# B G#m E



09 Chorus-LIGHT

Merry Christmas Everyone

- Shakin' Stevens -

Words and Music by Bob Heatlie
Arranged by Hans Reintjes
Original Key A Major

Light swing ♩ = 98

Intro

Musical notation for the Intro section, featuring three staves labeled HIGH, MID, and LOW. The key signature is A Major (three sharps) and the time signature is 4/4. The tempo is marked as 'Light swing' with a quarter note equal to 98 beats per minute. The music begins with a triplet of eighth notes on the first staff, followed by a melodic line. The lyrics 'Ooh...' and 'Snow is' are written below the staves.

Verse 1

Musical notation for the Verse 1 section, featuring three staves labeled H, M, and L. The key signature is A Major and the time signature is 4/4. The music starts at measure 9. The lyrics are: 'fal - ling all a - round me, child - ren play - ing, hav - ing'. The notation includes a treble clef and a key signature of three sharps.

© www.ChorusOnline.com / 0031 (0) 6 - 41 57 77 56

33

H pre-sents and ex-chang-ing kiss - es, time for sing - ing Christ-mas

M pre-sents and ex-chang-ing kiss - es, — time for sing - ing Christ-mas

L and ex-chang-ing kiss - es, time for sing - ing Christ-mas

Chorus 1

39

H songs. We have a par-ty to - night. —

M songs. We're gon-na have a par-ty to - night. —

L songs. We have a par-ty to - night. —

45

H Whoo, — un-der neath the mis-tle-toe, we'll kiss bij can-dle -

M I'm gon-na find that girl un-der neath the mis-tle-toe, we'll kiss bij can-dle -

L Whoo, — un-der neath the mis-tle-toe, we'll kiss bij can-dle -

Instrumental solo

66

H

M

L

Who, _____ whoo. _____

Who, _____ whoo. _____

Who, _____ whoo. _____

75

H

M

L

Shoo-bi-doo-bi doo-bi-doo-bap. Shoo-bi-doo-bi doo-bi-doo-bap. Shoo-bi-doo-bi

Shoo-bi-doo-bi doo-bi-doo-bap. Shoo-bi-doo-bi doo-bi-doo-bap. Shoo-bi-doo-bi

Shoo-bi-doo-bi doo-bi-doo-bap. Shoo-bi-doo-bi doo-bi-doo-bap. Shoo-bi-doo-bi

Chorus 2

80

H

M

L

doo-bi-doo-bap. Shoo-bi-doo-bi doo-bi-doo-bap. We have a

doo-bi-doo-bap. Shoo-bi-doo-bi doo-bi-doo-bap. We're gon-na have a

doo-bi-doo-bap. Shoo-bi-doo-bi doo-bi-doo-bap. We have a

101

H
son, Whoo. _____ mer-ry Christ-mas ev-'ry -

M
son, love and un-der-stand-ing, _____ mer-ry Christ-mas ev-'ry -

L
8
Whoo. _____ mer-ry Christ-mas ev-'ry -

107

H
one. mer-ry Christ-mas ev-'ry - one. Ooh mer-ry

M
one. mer-ry Christ-mas ev-'ry - one. Ooh mer-ry

L
8
one. mer-ry Christ-mas ev-'ry - one. Ooh mer-ry

Interlude

113

H
Christ-mas ev-'ry - one. Ooh. _____

M
Christ-mas ev-'ry - one. Ooh. _____

L
8
Christ-mas ev-'ry - one. Ooh. _____

Verse 6
139

H
Snow is fal - ling Snow is fal - ling child-ren

M
fal - ling all ___ a-round ___ me, child-ren play - ing,

L
Snow is fal - ling all a - round me, child-ren

144

H
play - ing, hav - ing fun. It's the sea - son, Whoo. _____

M
hav-ing fun. It's the sea - son, love and un - der -

L
play - ing, hav - ing fun. Whoo. _____

149

H
_____ mer-ry Christ-mas ev - 'ry - one.

M
stand - ing, _____ mer-ry Christ-mas ev - 'ry - one. Oh Snow is

L
_____ mer-ry Christ-mas ev - 'ry - one.

167

H
Christ-mas ev-'ry - one. mer-ry Christ-mas ev-'ry - one. — Oh mer-ry

M
Christ-mas ev-'ry - one. mer-ry Christ-mas ev-'ry - one. — Oh mer-ry

L
Christ-mas ev-'ry - one. mer-ry Christ-mas ev-'ry - one. — Oh mer-ry

Coda

175

H
Christmas ev-'ry - one. Ooh. — Christ-mas!

M
Christmas ev-'ry - one. Ooh. — Christ-mas!

L
Christmas ev-'ry - one. Ooh. — Christ-mas!



10 C Instrument

Merry Christmas Everyone

- Shakin' Stevens -

Words and Music by Bob Heatlie
Arranged by Hans Reintjes
Original Key A Major

Light swing ♩=98

Intro

Verse 1

Verse 2

Musical notation for the Intro and the first two verses. The Intro consists of two measures with a fermata. Verse 1 and Verse 2 each consist of two measures with a fermata. The key signature is A major (three sharps) and the time signature is 4/4.

Chorus 1

Musical notation for Chorus 1, starting at measure 40. It consists of two measures with a fermata. The key signature is A major and the time signature is 4/4.

Verse 3

Musical notation for Verse 3, starting at measure 50. It consists of two measures with a fermata. The key signature is A major and the time signature is 4/4.

Instrumental solo

Musical notation for the instrumental solo, starting at measure 56. It consists of two measures with a fermata. The key signature is A major and the time signature is 4/4.

Solo (optional)

Musical notation for the continuation of the instrumental solo, starting at measure 68. It consists of two measures with a fermata. The key signature is A major and the time signature is 4/4.

Chorus 2

Musical notation for Chorus 2, starting at measure 74. It consists of two measures with a fermata. The key signature is A major and the time signature is 4/4.

Verse 4

Musical notation for Verse 4, starting at measure 80. It consists of two measures with a fermata. The key signature is A major and the time signature is 4/4.

Musical notation for the Interlude, starting at measure 86. It consists of two measures with a fermata. The key signature is A major and the time signature is 4/4.

Interlude

Musical notation for the final section, starting at measure 108. It consists of two measures with a fermata. The key signature is A major and the time signature is 4/4.



11 Bb Instrument

Merry Christmas Everyone

- Shakin' Stevens -

Words and Music by Bob Heatlie
Arranged by Hans Reintjes
Original Key A Major

Light swing ♩=98

Intro

Verse 1

Verse 2

Musical notation for the Intro, Verse 1, and Verse 2 sections. The Intro consists of two measures with a fermata. Verse 1 and Verse 2 each consist of two measures with a fermata. The key signature is A major (three sharps) and the time signature is 4/4.

Chorus 1

Musical notation for Chorus 1, starting at measure 40. It features a long melodic line with a fermata over the final measure, which contains a '5' fingering.

Verse 3

Musical notation for Verse 3, starting at measure 50. It consists of two measures with a fermata.

Instrumental solo

Musical notation for the Instrumental solo, starting at measure 56. It includes a '7' fingering and is labeled 'Solo (optional)'.

Musical notation for the continuation of the Instrumental solo, starting at measure 68. It features a melodic line with eighth notes and a fermata.

Musical notation for the continuation of the Instrumental solo, starting at measure 74. It features a melodic line with eighth notes and a fermata.

Chorus 2

Musical notation for Chorus 2, starting at measure 80. It features a long melodic line with a fermata over the final measure.

Verse 4

Musical notation for Verse 4, starting at measure 86. It consists of three measures with a fermata. The first measure has a '5' fingering, the second an '8', and the third a '6'.

Interlude

Musical notation for the Interlude, starting at measure 108. It consists of three measures with a fermata. The first measure has a '2' fingering, the second a '2', and the third a '7'.



12 Eb Instrument

Merry Christmas Everyone

- Shakin' Stevens -

Words and Music by Bob Heatlie
Arranged by Hans Reintjes
Original Key A Major

Light swing ♩=98

Intro

Verse 1

Verse 2

Musical notation for the Intro and Verse 1. The Intro consists of two measures with a fermata over the first measure. Verse 1 consists of two measures, each with a fermata. The key signature is A major (three sharps) and the time signature is 4/4.

Chorus 1

Musical notation for Chorus 1, starting at measure 40. It features a long melodic line with a fermata over the final measure. The key signature is A major and the time signature is 4/4.

Verse 3

Musical notation for Verse 3, starting at measure 50. It consists of two measures with a fermata over the first measure. The key signature is A major and the time signature is 4/4.

Instrumental solo

Musical notation for the Instrumental solo, starting at measure 56. It includes a section labeled 'Solo (optional)' with a fermata. The key signature is A major and the time signature is 4/4.

Musical notation for Verse 4, starting at measure 68. It consists of two measures with a fermata over the first measure. The key signature is A major and the time signature is 4/4.

Chorus 2

Musical notation for Chorus 2, starting at measure 80. It features a long melodic line with a fermata over the final measure. The key signature is A major and the time signature is 4/4.

Verse 4

Musical notation for Verse 4, starting at measure 86. It consists of two measures with a fermata over the first measure. The key signature is A major and the time signature is 4/4.

Interlude

Musical notation for the Interlude, starting at measure 108. It consists of two measures with a fermata over the first measure. The key signature is A major and the time signature is 4/4.



13 Piano Advanced

Merry Christmas Everyone

- Shakin' Stevens -

Words and Music by Bob Heatlie
Arranged by Hans Reintjes
Original Key A Major

Light swing ♩ = 98

Intro

A C#7/G# F#m D A

Verse 1

E A A C#7/G# F#m

D A D A E A

C#7/G# F#m D A E A

© www.ChorusOnline.com / 0031 (0) 6 - 41 57 77 56



14 Piano Intermediate

Merry Christmas Everyone

- Shakin' Stevens -

Words and Music by Bob Heatlie
Arranged by Hans Reintjes
Original Key A Major

Light swing $\text{♩} = 98$

Intro

A C^{#7}/G[#] F^{#m} D A

Verse 1

E A A C^{#7}/G[#] F^{#m}

D A D A E A

C^{#7}/G[#] F^{#m} D A E A

© www.ChorusOnline.com / 0031 (0) 6 - 41 57 77 56



15 Synthesizer

Merry Christmas Everyone

- Shakin' Stevens -

Words and Music by Bob Heatlie
Arranged by Hans Reintjes
Original Key A Major

Light swing $\text{♩} = 98$

Intro

Verse 1

Musical notation for the Intro and Verse 1. The Intro consists of two measures of chords in the right hand and a rhythmic pattern in the left hand. Verse 1 consists of three measures of chords in the right hand and a rhythmic pattern in the left hand. The notation includes a treble clef, a key signature of two sharps (F# and C#), and a 4/4 time signature. The instrument is labeled 'Vibraphone'. There are also labels for 'Brass Section' in the right hand of the first three measures.

Verse 2

Chorus 1

Musical notation for Verse 2 and Chorus 1. Verse 2 consists of two measures of chords in the right hand and a rhythmic pattern in the left hand. Chorus 1 consists of three measures of chords in the right hand and a rhythmic pattern in the left hand. The notation includes a treble clef, a key signature of two sharps (F# and C#), and a 4/4 time signature. The instrument is labeled 'Tubular Bells'. There are also labels for 'Brass Section' in the right hand of the first two measures.

Verse 3

Musical notation for Verse 3. Verse 3 consists of three measures of chords in the right hand and a rhythmic pattern in the left hand. The notation includes a treble clef, a key signature of two sharps (F# and C#), and a 4/4 time signature. The instrument is labeled 'Brass Section'.

Musical notation for the continuation of Verse 3. It consists of two measures of chords in the right hand and a rhythmic pattern in the left hand. The notation includes a treble clef, a key signature of two sharps (F# and C#), and a 4/4 time signature.

Interlude

Verse 5

115

4

4

Brass Section

125

Verse 6

131

Verse 7

144

157



16 Guitar

Merry Christmas Everyone

- Shakin' Stevens -

Words and Music by Bob Heatlie
Arranged by Hans Reintjes
Original Key A Major

Light swing ♩ = 98

Intro

Verse 1

Verse 2

A C#7/G# F#m D
Electric Guitar (Muted)

A D A A E A C#7/G# F#m

D A E A E F#m D/F#

A/E E F#m D/F# A E sus4

Verse 3

E A C#7/G# F#m D A D

A E A C#7/G# F#m D A

Instrumental solo

E A A C#7/G# F#m D



17 Bass Guitar

Merry Christmas Everyone

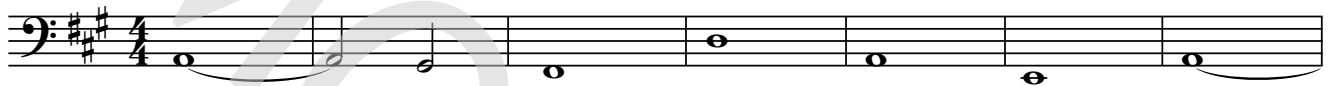
- Shakin' Stevens -

Words and Music by Bob Heatlie
Arranged by Hans Reintjes
Original Key A Major

Light swing ♩ = 98

Intro

A C#⁷/G# F#^m D A E A



Verse 1

Verse 2



D A D A E A C#⁷/G#



Chorus 1

F#^m D A E A E F#^m



D/F# A/E E F#^m D/F# A



Verse 3

E^{sus4} E A C#⁷/G# F#^m D A



D A E A C#⁷/G# F#^m D



Drumkit/Percussion

High Tom
Hi-Hat closed
Hi-Hat open
Mid Tom
Low Tom
Ride Cymbal
Crash Cymbal
Shareclick
Bassdrum (Kick)
Snaredrum
Hi-Hat Foot
Floor Tom
Ride Bell/Cup
Splash Cymbal
Triangle mute
Tambourine Beating
Triangle open

- Shaker (eggs)
- Claves
- High Timbale
- Sleigh Bells
- Bell Tree
- Maracas
- Wind Chimes

Handclap
Guero
Woodblock High
Timbale Low
Agogo High
Cowbell
Conga
Cabasa
Woodblock Low
Agogo Low



18 Drum Set

Merry Christmas Everyone

- Shakin' Stevens -

Words and Music by Bob Heatlie
Arranged by Hans Reintjes
Original Key A Major

Light swing $\text{♩} = 98$

Intro

Verse 1

Verse 2

8 8 6

30

Chorus 1

41

Verse 3

51

Instrumental solo

60

69

Chorus 2

80

Verse 4

91

Drumkit/Percussion

Hi-Hat closed
Hi-Hat open
High Tom
Mid Tom
Low Tom
Floor Tom
Ride Cymbal
Ride Bell/Cup
Crash Cymbal
Splash Cymbal
Triangle mute
Bassdrum (Kick)
Snaredrum
Hi-Hat Foot
Tambourine Beating
Triangle open

- Shaker (eggs)
- Claves
- High Timbale
- Sleigh Bells
- Bell Tree
- Maracas
- Wind Chimes

Handclap
Guro
Woodblock High
Timbale Low
Agogo High
Cowbell
Conga Cabasa
Woodblock Low
Agogo Low



19 Percussion

Merry Christmas Everyone

- Shakin' Stevens -

Words and Music by Bob Heatlie
Arranged by Hans Reintjes
Original Key A Major

Light swing ♩ = 98

Intro

Sleigh Bells

Verse 1

9

Verse 2

25

Chorus 1

41 *Tambourine*

Sleigh Bells

Verse 3

51

Instrumental solo

67

Chorus 2

83 *Tambourine*

Sleigh Bells

© www.ChorusOnline.com / 0031 (0) 6 - 41 57 77 56



Merry Christmas Everyone

- Shakin' Stevens -

Words and Music by Bob Heatlie
Arranged by Hans Reintjes
Original Key A Major

Light swing ♩ = 98

Intro

A C#7/G# F#m D A

Ooh. _____

Verse 1

E A A C#7/G# F#m

_____ Snow is fal - ling all a - round me,

D A D A E A

child - ren play - ing, hav - ing fun. It's the sea - son,

C#7/G# F#m D A E A

love and un - der - stand - ing, mer - ry Christ - mas ev - 'ry - one.

Verse 2

A C#7/G# F#m D A

Time for par - ties and ce - le - bra - tions, peo - ple danc - ing

D A E A C#7/G# F#m

all night long. Time for pre - sents and ex - chang - ing kiss - es,



21 Empty Paper

Merry Christmas Everyone

- Shakin' Stevens -

Words and Music by Bob Heatlie
Arranged by Hans Reintjes
Original Key A Major

Light swing ♩ = 98

Intro

4/4

5

Verse 1

9

13

17

21

Verse 2

25

29

22 Lyrics

chorus[®]

online

Merry Christmas Everyone

- Shakin' Stevens -

*Words and Music by Bob Heatlie
Arranged by Hans Reintjes
Original Key A Major*

Intro
Ooh

Verse 1
Snow is falling, all around me,
Children playing, having fun.
It's the season, love and understanding,
merry Christmas ev'ryone.

Verse 2
Time for parties and celebrations,
People dancing all night long.
Time for presents and exchanging kisses,
Time for singing Christmas songs.

Chorus 1
We're gonna have a party tonight,
I'm gonna find that girl underneath the mistletoe,
We'll kiss by candlelight.

Verse 3
Room is swaying, (shoobi doobi bap bap) records playing,
All the old songs, we love to hear,
All I wish that ev'ryday was Christmas,
What a nice way to spend the year.

Instrumental solo
whoo (2x) (shoobi doobi , doobi doobap 4x)

Chorus 2
We're gonna have a party tonight,
I'm gonna find that girl underneath the mistletoe,
We'll kiss by candlelight.

Verse 4
Snow is falling (snow is falling) all around me (all around me),
Children playing (Children playing), having fun (having fun).
It's the season (whoo), love and understanding,
merry Christmas everyone, merry Christmas everyone.
Ooh merry Christmas everyone.

Interlude
Ooh
Verse 5 = 4
Verse 6 = 5 + (shoobi doobi , doobi doobap 6x)

Coda
Ooh, Christmas.