



## **Green\_Green\_Grass-George\_Ezra-SSAA**

Pag.

02	Full score combo C instrument
12	Full score combo Bb instrument
22	Full score combo Eb instrument
32	Full score combo 4 extra staves
47	Full score small combo
60	Full score small combo 2 extra staves
76	Full score Vocals (SSAA) Piano Advanced
90	Full score Vocals (SSAA) Piano Intermediate
104	Vocals (SSAA)
113	C instrument
115	Bb instrument
117	Eb instrument
119	Piano Combo
122	Piano Solo Advanced
126	Piano Solo Intermediate
129	Synthesizer
132	Guitar
134	Bass guitar
136	Drumkit
139	Leadsheet (melody, lyrics, chords)
142	Lyrics



SSAA Combo C

# Green Green Grass

- George Ezra -

Words and Music by George Barnett, Joel Pott and Stuart Price  
Arranged by Frank de Vreeze  
Original Key

Pop/Rock ♩ = 113

A

Soprano 1  
You bet-ter throw a part - y on the day that I die. Well she moves like light - ning, and she counts to \_\_\_ three. Then she

Soprano 2  
You bet-ter throw a part - y on the day that I die. Well she moves like light - ning, and she counts to \_\_\_ three. Then she

Alto 1  
You bet-ter throw a part - y on the day that I die. \_

Alto 2  
You bet-ter throw a part - y on the day that I die. \_

C Instr.

Piano Combo  
A<sup>b</sup> F<sup>m</sup> A<sup>b</sup> D<sup>b</sup> A<sup>b</sup> D<sup>b</sup>/e<sup>b</sup> A<sup>b</sup> F<sup>m</sup> A<sup>b</sup>  
(No synth: play small notes)

Synthesizer  
Strings  
Vibraphone (Steel drum)

Guitar  
Jazz Guitar

Bass Guitar

Drums  
clap

Green Green Grass 3  
SSAA Combo C

15

S1 *Lead*  
O - ver the hills and un - der-cov - er, un - der-cov - er, un - der-cov - er, she said.

S2  
O - ver the hills and un - der-cov - er, un - der-cov - er, un - der-cov - er, she said.

A1  
Me and the girl straight out of town. (wn) un - der-cov - er, un - der-cov - er,

A2  
Me and the girl straight out of town. (wn) un - der-cov - er, un - der-cov - er,

C

P.C.  
F<sup>m</sup> E D<sup>b</sup>

Synth

Gtr.

BG

Dr.

19

S1  
"Green green grass, blue blue sky. You bet - ter throw a part - y on the day that I die."

S2  
"Green green grass, blue blue sky. You bet - ter throw a part - y on the day that I die."

A1  
"Green green grass, blue blue sky. You bet - ter throw a part - y on the day that I die."

A2  
"Green green grass, blue blue sky. You bet - ter throw a part - y on the day that I die."

C

P.C.  
A<sup>b</sup> D<sup>b</sup>/f A<sup>b</sup> D<sup>b</sup> A<sup>b</sup> E<sup>b</sup> A<sup>b</sup>

Synth

Gtr.

BG

Dr.  
*Cowbell*

Green Green Grass 5  
SSAA Combo C

31

S1  
- - - nius, watch and learn how she sets the world on fire just to watch the sucker burn.

S2  
- - - nius, watch and learn how she sets the world on fire just to watch the sucker burn.

A1  
watch and learn aah

A2  
watch and learn aah

C

P.C.  
A<sup>b</sup> F<sup>m</sup> A<sup>b</sup> D<sup>b</sup> A<sup>b</sup> E<sup>b</sup> A<sup>b</sup>

Synth  
Strings

Gtr.

BG

Dr.

**E**

35

S1  
Get-a-way car for two young lov-ers. O-ver the hills and un-der-cov-er,

S2  
Get-a-way car for two young lov-ers. O-ver the hills and un-der-cov-er,

A1  
Load it up when the sun comes down. (wn) Me and the girl straight out of town. (wn)

A2  
Load it up when the sun comes down. (wn) Me and the girl straight out of town. (wn)

C

P.C.  
F<sup>m</sup> E<sup>b</sup> D<sup>b</sup> F<sup>m</sup> E<sup>b</sup> D<sup>b</sup>

Synth  
Polysynth  
Atmosphere

Gtr.

BG

Dr.

Green Green Grass 7  
SSAA Combo C

G

47

S1 bet-ter throw a part - y on the day that I die." Throw a part - - - y, Throw a part - - - y, yeah. — Throw a part -

S2 bet-ter throw a part - y on the day that I die." Throw a part - - - y, Throw a part - - - y, yeah. — Throw a part -

A1 bet-ter throw a part - y on the day that I die." Throw a part - - - y, Throw a part - - - y, Throw a part -

A2 bet-ter throw a part - y on the day that I die." Throw a part - - - y, Throw a part - - - y, Throw a part -

C

P.C. D<sup>9</sup> A<sup>b</sup> E<sup>9</sup> A<sup>b</sup> A<sup>b</sup> F<sup>m</sup> A<sup>b</sup>

Synth <sup>8</sup>Rock Organ  
Brass section

Gtr.

BG

Dr. <sup>Cr</sup>Cr

51

S1 - - y, on the day that I die." Throw a part - - - y, Throw a part - - - y, yeah. — Throw a part -

S2 - - y, on the day that I die." Throw a part - - - y, Throw a part - - - y, yeah. — Throw a part -

A1 - - y, on the day that I die." Throw a part - - - y, Throw a part - - - y, Throw a part -

A2 - - y, on the day that I die." Throw a part - - - y, Throw a part - - - y, Throw a part -

C

P.C. D<sup>9</sup> A<sup>b</sup> E<sup>9</sup> A<sup>b</sup> A<sup>b</sup> F<sup>m</sup> A<sup>b</sup>

Synth <sup>8</sup>Rock Organ

Gtr.

BG

Dr. <sup>Cr</sup>Cr

# Green Green Grass 9

SSAA Combo C

I

63

S1 "Green green grass, blue blue \_ sky. You bet - ter throw a part - y on \_ the day that I die."

S2 "Green green grass, blue blue \_ sky. You bet - ter throw a part - y on \_ the day that I die."

A1 "Green green grass, blue blue \_ sky. You bet - ter throw a part - y on the day that I die."

A2 "Green green grass, blue blue \_ sky. You bet - ter throw a part - y on \_ the day that I die."

C

P.C. A<sup>b</sup> D<sup>b</sup>/f A<sup>b</sup> D<sup>b</sup> A<sup>b</sup> E<sup>b</sup> A<sup>b</sup>

Synth Polysynth Brass section

Gtr.

BG

Dr. Cowbell

67

S1 "Green green grass, blue blue \_ sky. You bet - ter throw a part - y on \_ the day that I die."

S2 "Green green grass, blue blue \_ sky. You bet - ter throw a part - y on \_ the day that I die."

A1 "Green green grass, blue blue \_ sky. You bet - ter throw a part - y on the day that I die."

A2 "Green green grass, blue blue \_ sky. You bet - ter throw a part - y on \_ the day that I die."

C

P.C. A<sup>b</sup> D<sup>b</sup>/f A<sup>b</sup> D<sup>b</sup> A<sup>b</sup> E<sup>b</sup> A<sup>b</sup>

Synth

Gtr.

BG

Dr.



SSAA Combo Bb

# Green Green Grass

- George Ezra -

Words and Music by George Barnett, Joel Pott and Stuart Price  
Arranged by Frank de Vreeze  
Original Key

DEMO

Pop/Rock ♩ = 113

A

Soprano 1  
You bet-ter throw a part - y on the day that I die. Well she moves like light - ning, and she counts to \_\_\_ three. Then she

Soprano 2  
You bet-ter throw a part - y on the day that I die. Well she moves like light - ning, and she counts to \_\_\_ three. Then she

Alto 1  
You bet-ter throw a part - y on the day that I die. \_

Alto 2  
You bet-ter throw a part - y on the day that I die. \_

Bb Instr.

Piano Combo  
A<sup>b</sup> F<sup>m</sup> A<sup>b</sup> D<sup>b</sup> A<sup>b</sup> D<sup>b</sup>/e<sup>b</sup> A<sup>b</sup> F<sup>m</sup> A<sup>b</sup>  
(No synth: play small notes)

Synthesizer  
Strings  
Vibraphone (Steel drum)

Guitar  
Jazz Guitar

Bass Guitar

Drums  
clap

© www.ChorusOnline.com / 0031 (0) 6 - 41 57 77 56

# Green Green Grass 3

SSAA Combo Bb

15

S1 *Lead*  
O - ver the hills and un - der-cov - er, un - der-cov - er, un - der-cov - er, she said.

S2  
O - ver the hills and un - der-cov - er, un - der-cov - er, un - der-cov - er, she said.

A1  
Me and the girl straight out of town. (wn) un - der-cov - er, un - der-cov - er,

A2  
Me and the girl straight out of town. (wn) un - der-cov - er, un - der-cov - er,

Bb

P.C.  
F<sup>m</sup> E<sup>b</sup> D<sup>b</sup>

Synth

Gtr.

BG

Dr.

C

19

S1  
"Green green grass, blue blue sky. You bet - ter throw a part - y on the day that I die."

S2  
"Green green grass, blue blue sky. You bet - ter throw a part - y on the day that I die."

A1  
"Green green grass, blue blue sky. You bet - ter throw a part - y on the day that I die."

A2  
"Green green grass, blue blue sky. You bet - ter throw a part - y on the day that I die."

Bb

P.C.  
A<sup>b</sup> D<sup>b</sup>/f A<sup>b</sup> D<sup>b</sup> A<sup>b</sup> E<sup>b</sup> A<sup>b</sup>

Synth

Gtr.

BG

Dr.  
*Cowbell*

Green Green Grass 5  
SSAA Combo Bb

31

S1  
- - - nius, watch and learn how she sets the world on fire just to watch the suck - er burn.

S2  
- - - nius, watch and learn how she sets the world on fire just to watch the suck - er burn.

A1  
watch and learn aah

A2  
watch and learn aah

Bb

P.C.  
A<sup>b</sup> F<sup>m</sup> A<sup>b</sup> D<sup>b</sup> A<sup>b</sup> E<sup>b</sup> A<sup>b</sup>

Synth  
Strings

Gtr.

BG

Dr.

**E**

35

S1  
Get-a-way car for two young lov-ers. O-ver the hills and un-der-cov-er,

S2  
Get-a-way car for two young lov-ers. O-ver the hills and un-der-cov-er,

A1  
Load it up when the sun comes down. (wn) Me and the girl straight out of town. (wn)

A2  
Load it up when the sun comes down. (wn) Me and the girl straight out of town. (wn)

Bb

P.C.  
F<sup>m</sup> E<sup>b</sup> D<sup>b</sup> F<sup>m</sup> E<sup>b</sup> D<sup>b</sup>

Synth  
Polysynth  
Atmosphere

Gtr.

BG

Dr.

# Green Green Grass 7

SSAA Combo Bb

G

47

S1 bet-ter throw a part - y on the day that I die." Throw a part - - - y, Throw a part - - - y, yeah. Throw a part -

S2 bet-ter throw a part - y on the day that I die." Throw a part - - - y, Throw a part - - - y, yeah. Throw a part -

A1 bet-ter throw a part - y on the day that I die." Throw a part - - - y, Throw a part - - - y, Throw a part -

A2 bet-ter throw a part - y on the day that I die." Throw a part - - - y, Throw a part - - - y, Throw a part -

Bb

P.C. D<sup>b</sup> A<sup>b</sup> E<sup>b</sup> A<sup>b</sup> A<sup>b</sup> F<sup>m</sup> A<sup>b</sup>

Synth 8<sup>ve</sup> Rock Organ  
Brass section

Gtr.

BG

Dr. Cowbell

51

S1 - - y, on the day that I die." Throw a part - - - y, Throw a part - - - y, yeah. Throw a part -

S2 - - y, on the day that I die." Throw a part - - - y, Throw a part - - - y, yeah. Throw a part -

A1 - - y, on the day that I die." Throw a part - - - y, Throw a part - - - y, Throw a part -

A2 - - y, on the day that I die." Throw a part - - - y, Throw a part - - - y, Throw a part -

Bb

P.C. D<sup>b</sup> A<sup>b</sup> E<sup>b</sup> A<sup>b</sup> A<sup>b</sup> F<sup>m</sup> A<sup>b</sup>

Synth

Gtr.

BG

Dr.

# Green Green Grass 9

SSAA Combo Bb

I

63

S1 "Green green grass, blue blue... sky. You bet-ter throw a part-y on the day that I die."

S2 "Green green grass, blue blue... sky. You bet-ter throw a part-y on the day that I die."

A1 "Green green grass, blue blue... sky. You bet-ter throw a part-y on the day that I die."

A2 "Green green grass, blue blue... sky. You bet-ter throw a part-y on the day that I die."

Bb

P.C. A<sup>b</sup> D<sup>b</sup>/f A<sup>b</sup> D<sup>b</sup> A<sup>b</sup> E<sup>b</sup> A<sup>b</sup>

Synth Polysynth Brass section

Gtr.

BG

Dr. Cowbell

67

S1 "Green green grass, blue blue... sky. You bet-ter throw a part-y on the day that I die."

S2 "Green green grass, blue blue... sky. You bet-ter throw a part-y on the day that I die."

A1 "Green green grass, blue blue... sky. You bet-ter throw a part-y on the day that I die."

A2 "Green green grass, blue blue... sky. You bet-ter throw a part-y on the day that I die."

Bb

P.C. A<sup>b</sup> D<sup>b</sup>/f A<sup>b</sup> D<sup>b</sup> A<sup>b</sup> E<sup>b</sup> A<sup>b</sup>

Synth Polysynth Brass section

Gtr.

BG

Dr. Cowbell



SSAA Combo Eb

# Green Green Grass

- George Ezra -

Words and Music by George Barnett, Joel Pott and Stuart Price  
Arranged by Frank de Vreeze  
Original Key

Pop/Rock ♩ = 113

A

Soprano 1  
You bet-ter throw a part - y on the day that I die. Well she moves like light - ning, and she counts to \_\_\_ three. Then she

Soprano 2  
You bet-ter throw a part - y on the day that I die. Well she moves like light - ning, and she counts to \_\_\_ three. Then she

Alto 1  
You bet-ter throw a part - y on the day that I die. \_

Alto 2  
You bet-ter throw a part - y on the day that I die. \_

Eb Instr.

Piano Combo  
A<sup>b</sup> F<sup>m</sup> A<sup>b</sup> D<sup>b</sup> A<sup>b</sup> D<sup>b</sup>/e<sup>b</sup> A<sup>b</sup> F<sup>m</sup> A<sup>b</sup>  
(No synth: play small notes)

Synthesizer  
Strings  
Vibraphone (Steel drum)

Guitar  
Jazz Guitar

Bass Guitar

Drums  
clap

Green Green Grass 3  
SSAA Combo Eb

15

S1 *Lead*  
O - ver the hills and un - der-cov - er, un - der-cov - er, un - der-cov - er, she said.

S2  
O - ver the hills and un - der-cov - er, un - der-cov - er, un - der-cov - er, she said.

A1  
Me and the girl straight out of town. (wn) un - der-cov - er, un - der-cov - er,

A2  
Me and the girl straight out of town. (wn) un - der-cov - er, un - der-cov - er,

Eb

P.C.  
F<sup>m</sup> E<sup>b</sup> D<sup>b</sup>

Synth

Gtr.

BG

Dr.

C

19

S1  
"Green green grass, blue blue sky. You bet - ter throw a part - y on the day that I die."

S2  
"Green green grass, blue blue sky. You bet - ter throw a part - y on the day that I die."

A1  
"Green green grass, blue blue sky. You bet - ter throw a part - y on the day that I die."

A2  
"Green green grass, blue blue sky. You bet - ter throw a part - y on the day that I die."

Eb

P.C.  
A<sup>b</sup> D<sup>b</sup>/f A<sup>b</sup> D<sup>b</sup> A<sup>b</sup> E<sup>b</sup> A<sup>b</sup>

Synth

Gtr.

BG

Dr.  
*Cowbell*

31

S1  
nius, watch and learn how she sets the world on fire just to watch the sucker burn.

S2  
nius, watch and learn how she sets the world on fire just to watch the sucker burn.

A1  
watch and learn aah

A2  
watch and learn aah

Eb

P.C.  
A<sup>b</sup> F<sup>m</sup> A<sup>b</sup> D<sup>b</sup> A<sup>b</sup> E<sup>b</sup> A<sup>b</sup>

Synth  
Strings

Gtr.

BG

Dr.

**E**

35

S1  
Get-a-way car for two young lov-ers. O-ver the hills and un-der-cov-er,

S2  
Get-a-way car for two young lov-ers. O-ver the hills and un-der-cov-er,

A1  
Load it up when the sun comes down. (wn) Me and the girl straight out of town. (wn)

A2  
Load it up when the sun comes down. (wn) Me and the girl straight out of town. (wn)

Eb

P.C.  
F<sup>m</sup> E<sup>b</sup> D<sup>b</sup> F<sup>m</sup> E<sup>b</sup> D<sup>b</sup>

Synth  
Polysynth  
Atmosphere

Gtr.

BG

Dr.

Green Green Grass 7  
SSAA Combo Eb

G

47

S1 bet-ter throw a part - y on the day that I die." Throw a part - - - y, Throw a part - - - y, yeah. Throw a part -

S2 bet-ter throw a part - y on the day that I die." Throw a part - - - y, Throw a part - - - y, yeah. Throw a part -

A1 bet-ter throw a part - y on the day that I die." Throw a part - - - y, Throw a part - - - y, Throw a part -

A2 bet-ter throw a part - y on the day that I die." Throw a part - - - y, Throw a part - - - y, Throw a part -

Eb

P.C. D<sup>b</sup> A<sup>b</sup> E<sup>b</sup> A<sup>b</sup> A<sup>b</sup> F<sup>m</sup> A<sup>b</sup>

Synth 8<sup>ve</sup> Rock Organ Brass section

Gtr.

BG

Dr. Cowbell

51

S1 - - y, on the day that I die." Throw a part - - - y, Throw a part - - - y, yeah. Throw a part -

S2 - - y, on the day that I die." Throw a part - - - y, Throw a part - - - y, yeah. Throw a part -

A1 - - y, on the day that I die." Throw a part - - - y, Throw a part - - - y, Throw a part -

A2 - - y, on the day that I die." Throw a part - - - y, Throw a part - - - y, Throw a part -

Eb

P.C. D<sup>b</sup> A<sup>b</sup> E<sup>b</sup> A<sup>b</sup> A<sup>b</sup> F<sup>m</sup> A<sup>b</sup>

Synth 8<sup>ve</sup> Rock Organ

Gtr.

BG

Dr.

# Green Green Grass 9

SSAA Combo Eb

I

63

S1 "Green green grass, blue blue... sky. You bet-ter throw a part-y on the day that I die."

S2 "Green green grass, blue blue... sky. You bet-ter throw a part-y on the day that I die."

A1 "Green green grass, blue blue... sky. You bet-ter throw a part-y on the day that I die."

A2 "Green green grass, blue blue... sky. You bet-ter throw a part-y on the day that I die."

Eb

P.C. A<sup>b</sup> D<sup>b</sup>/f A<sup>b</sup> D<sup>b</sup> A<sup>b</sup> E<sup>b</sup> A<sup>b</sup>

Synth Polysynth Brass section

Gtr.

BG

Dr. Cowbell

67

S1 "Green green grass, blue blue... sky. You bet-ter throw a part-y on the day that I die."

S2 "Green green grass, blue blue... sky. You bet-ter throw a part-y on the day that I die."

A1 "Green green grass, blue blue... sky. You bet-ter throw a part-y on the day that I die."

A2 "Green green grass, blue blue... sky. You bet-ter throw a part-y on the day that I die."

Eb

P.C. A<sup>b</sup> D<sup>b</sup>/f A<sup>b</sup> D<sup>b</sup> A<sup>b</sup> E<sup>b</sup> A<sup>b</sup>

Synth

Gtr.

BG

Dr.

SSAA 4 extra staves

# Green Green Grass

- George Ezra -

Words and Music by George Barnett, Joel Pitt and Stuart Price

Arranged by Frank de Vreeze

Original Key

Pop/Rock ♩ = 113



Sheet music for Soprano 1, Soprano 2, Alto 1, and Alto 2. The music is in 4/4 time and features lyrics such as "You bet-ter throw a part - y on the day that I de. Well she moves like light - ning, and she courts to \_\_\_ three. Then she turns out all \_\_\_ the lights and says she's com - ing for \_\_\_ me. Now put your hands". The score includes guitar parts (Lead Guitar, Jazzy Guitar, and Chorus), piano, synthesizer, and drums. Chords are indicated above the piano part, including A<sup>b</sup>, F<sup>m</sup>, D<sup>b</sup>, A<sup>b</sup>, D/ei, A<sup>b</sup>, F<sup>m</sup>, A<sup>b</sup>, D<sup>b</sup>, A<sup>b</sup>, E<sup>b</sup>, and A<sup>b</sup>. Performance instructions like "clap" and "Thorough (Steel drum)" are also present.

14

S1 Get - a - way car for two young lov - ers. she said. Lead

S2 Get - a - way car for two young lov - ers. O - ver the hills and un - der - cov - er un - der - cov - er un - der - cov - er un - der - cov - er she said.

A1 ——— (vn) Me and the girl ——— straight out of town. ——— (vn) un - der - cov - er un - der - cov - er un - der - cov - er un - der - cov - er

A2 ——— (vn) Me and the girl ——— straight out of town. ——— (vn) un - der - cov - er un - der - cov - er un - der - cov - er un - der - cov - er

1  
2  
3  
4

D<sub>9</sub> F<sub>m</sub> E<sub>7</sub> D<sub>9</sub>

P.C.

Synth

Gtr.

BG

Dr.

2/4

S1 blue blue — sky. You bet-ter throw a part - y on — the day that I die." We go to - geth - er, — but the girl

S2 blue blue — sky. You bet-ter throw a part - y on — the day that I die." We go to - geth - er, — Ad - am and Eve, —

A1 blue blue — sky. You bet-ter throw a part - y on the day that I die." We go to - geth - er, — but the girl

A2 blue blue — sky. You bet-ter throw a part - y on — the day that I die." Ad - am and Eve, — Ad - am and Eve, —

1

2

3

4

P.C. D<sup>9</sup>/f A<sup>1</sup> D<sup>9</sup> A<sup>1</sup> E<sup>9</sup> A<sup>1</sup> A<sup>1</sup> Fm A<sup>1</sup>

Synth

Dr.

BG

Gr.

8

ORIGINAL DO NOT COPY

E

3/4

S1 — the suck - er burn, Get - a - way car for two young lov - ers. O - ver the hills and un - der - cov - er

S2 — the suck - er burn, Get - a - way car for two young lov - ers. O - ver the hills and un - der - cov - er

A1 — — — — — Load it up — when the sun comes down. — — — — — Me and the girl — straight out of town. — — — — — (wn)

A2 — — — — — Load it up — when the sun comes down. — — — — — Me and the girl — straight out of town. — — — — — (wn)

1 — — — — —

2 — — — — —

3 — — — — —

4 — — — — —

E<sub>b</sub> A<sub>b</sub> F<sub>m</sub> E<sub>b</sub> D<sub>b</sub> F<sub>m</sub> E<sub>b</sub> D<sub>b</sub>

P.C. (8<sup>va</sup>) Polysynth Atmosphere

Synth

Dr. BG Ctr. 8

4/4

S1 day that I die:" "Green green grass, blue blue sky, You bet-ter throw a part - y on the day that I die:" Throw a part -

S2 day that I die:" "Green green grass, blue blue sky, You bet-ter throw a part - y on the day that I die:" Throw a part -

A1 day that I die:" "Green green grass, blue blue sky, You bet-ter throw a part - y on the day that I die:" Throw a part -

A2 day that I die:" "Green green grass, blue blue sky, You bet-ter throw a part - y on the day that I die:" Throw a part -

1

2

3

4

P.C. E<sup>b</sup> A<sup>b</sup> A<sup>b</sup> D<sup>b</sup>/f A<sup>b</sup> D<sup>b</sup> A<sup>b</sup> E<sup>b</sup> A<sup>b</sup>

Synth

Gr. 8

BG

Dr.

H

5/4

S1 - - - Y/ yeah, — Throw a part - - - Y/ on — the day that I die." ooh Get - a - way car for two young lov - ers.

S2 - - - Y/ yeah, — Throw a part - - - Y/ on — the day that I die." ooh Get - a - way car for two young lov - ers.

A1 - - - Y/ Throw a part - - - Y/ on — the day that I die." Load it up — when the sun comes down, —

A2 - - - Y/ Throw a part - - - Y/ on the day that I die." Load it up — when the sun comes down, —

1

2

3

4

Fm A<sup>b</sup> D<sup>b</sup> A<sup>b</sup> E<sup>b</sup> A<sup>b</sup> D<sup>major7</sup> E<sup>b</sup>

P.C.

Synth (8<sup>va</sup>)

Gtr.

BG

Dr.

Green Green Grass 13  
SSAA 4 extra staves

6/4

S1 blue blue— sky— You bet-ter throw a part - y on— the day that I die." "Green green grass, blue blue— sky— You

S2 blue blue— sky— You bet-ter throw a part - y on— the day that I die." "Green green grass, blue blue— sky— You

A1 blue blue— sky— You bet-ter throw a part - y on the day that I die." "Green green grass, blue blue— sky— You

A2 blue blue— sky— You bet-ter throw a part - y on— the day that I die." "Green green grass, blue blue— sky— You

1

2

3

4

P.C. D $\flat$ /f A $\flat$  D $\flat$  A $\flat$  E $\flat$  A $\flat$  A $\flat$  D $\flat$ /f A $\flat$

Synth

Gr. 8

BG

Dr.

Green Green Grass 15  
SSAA 4 extra staves

7/4

S1 day that I die." "Green green grass, blue blue— sky You bet-ter throw a part - y on— the day that I die."

S2 day that I die." "Green green grass, blue blue— sky You bet-ter throw a part - y on— the day that I die."

A1 day that I die." "Green green grass, blue blue— sky You bet-ter throw a part - y on— the day that I die."

A2 day that I die." "Green green grass, blue blue— sky You bet-ter throw a part - y on— the day that I die."

1

2

3

4

P.C. E<sup>b</sup> A<sup>b</sup> A<sup>b</sup> D<sup>b</sup>/f A<sup>b</sup> D<sup>b</sup> A<sup>b</sup> E<sup>b</sup> A<sup>b</sup>

Synth

Gr. 8

BG

Dr.



SSAA small Combo

# Green Green Grass

- George Ezra -

Words and Music by George Barnett, Joel Pott and Stuart Price  
Arranged by Frank de Vreeze  
Original Key

Pop/Rock ♩ = 113

A

Soprano 1  
Soprano 2  
Alto 1  
Alto 2

You bet-ter throw a part - y on the day that I die. Well she moves like  
You bet-ter throw a part - y on the day that I die. Well she moves like  
You bet-ter throw a part - y on the day that I die. —  
You bet-ter throw a part - y on the day that I die. —

Piano Combo

Jazz Guitar

Bass Guitar

Drums  
clap

A<sup>b</sup> F<sup>m</sup> A<sup>b</sup> D<sup>b</sup> A<sup>b</sup> D<sup>b</sup>/e<sup>b</sup>  
(No synth: play small notes)

Green Green Grass 3  
SSAA small Combo

B

11

S1  
no one in here liv - ing gon - na make\_\_\_ it out a - live.

S2  
no one in here liv - ing gon - na make\_\_\_ it out a - live.

A1  
aah \_\_\_\_\_ Load it up\_\_\_ when the sun comes down.\_\_\_\_\_

A2  
aah \_\_\_\_\_ Load it up\_\_\_ when the sun comes down.\_\_\_\_\_

P.C.  
D<sup>b</sup> A<sup>b</sup> E<sup>b</sup> A<sup>b</sup> F<sup>m</sup> E<sup>b</sup>

Gtr.  
BG  
Dr.

14

S1  
Get - a - way car for two young lov - ers. O - ver the hills and un - der - cov - er,

S2  
Get - a - way car for two young lov - ers. O - ver the hills and un - der - cov - er,

A1  
— (wn) Me and the girl\_\_\_ straight out of town.\_\_\_\_\_ (wn)

A2  
— (wn) Me and the girl\_\_\_ straight out of town.\_\_\_\_\_ (wn)

P.C.  
D<sup>b</sup> F<sup>m</sup> E<sup>b</sup> D<sup>b</sup>

Gtr.  
BG  
Dr.

Green Green Grass 5  
SSAA small Combo

23

S1 "Green green grass, blue blue\_\_ sky. You bet-ter throw a part - y on\_\_ the

S2 "Green green grass, blue blue\_\_ sky. You bet-ter throw a part - y on\_\_ the

A1 "Green green grass, blue blue\_\_ sky. You bet-ter throw a part - y on the

A2 "Green green grass, blue blue\_\_ sky. You bet-ter throw a part - y on\_\_ the

P.C.  $A^b$   $D^b/f$   $A^b$   $D^b$   $A^b$

Gtr.

BG

Dr.

**D**

26

S1 day that I die." We go to - geth - er, Ad - am and Eve, but the girl

S2 day that I die." We go to - geth - er, Ad - am and Eve, but the girl

A1 day that I die." Ad - am and Eve,

A2 day that I die." Ad - am and Eve,

P.C.  $E^b$   $A^b$   $A^b$   $F^m$   $A^b$

Gtr.

BG

Dr.

E

35

S1  
Get - a - way car for two young lov - ers.

S2  
Get - a - way car for two young lov - ers.

A1  
Load it up when the sun comes down. (wn) Me and the girl straight out of town.

A2  
Load it up when the sun comes down. (wn) Me and the girl straight out of town.

P.C.  
F<sup>m</sup> E<sup>b</sup> D<sup>b</sup> F<sup>m</sup> E<sup>b</sup>

Gtr.  
BG  
Dr.

38

S1  
O - ver the hills and un - der - cov - er, un - der - cov - er, un - der - cov - er, she said. Lead

S2  
O - ver the hills and un - der - cov - er, un - der - cov - er, un - der - cov - er, she said.

A1  
(wn) un - der - cov - er, un - der - cov - er,

A2  
(wn) un - der - cov - er, un - der - cov - er,

P.C.  
D<sup>b</sup>

Gtr.  
BG  
Dr.

Green Green Grass 9  
SSAA small Combo

G

49

S1  
- - - y, Throw a part - - - y, yeah. — Throw a part - - - y, on the

S2  
- - - y, Throw a part - - - y, yeah. — Throw a part - - - y, on the

A1  
- - - y, Throw a part - - - y, Throw a part - - - y, on the

A2  
- - - y, Throw a part - - - y, Throw a part - - - y, on the

P.C.  
A $\flat$  F $m$  A $\flat$  D $\flat$  A $\flat$

Gtr.  
BG  
Dr. *Cowbell*

52

S1  
day that I die." Throw a part - - - y, Throw a part - - - y, yeah. — Throw a part -

S2  
day that I die." Throw a part - - - y, Throw a part - - - y, yeah. — Throw a part -

A1  
day that I die." Throw a part - - - y, Throw a part - - - y, Throw a part -

A2  
day that I die." Throw a part - - - y, Throw a part - - - y, Throw a part -

P.C.  
E $\flat$  A $\flat$  A $\flat$  F $m$  A $\flat$

Gtr.  
BG  
Dr.

# Green Green Grass 11

SSAA small Combo

I

61

S1 un - der - cov - er, un - der - cov - er, she said. "Green green grass,

S2 un - der - cov - er, un - der - cov - er, she said. "Green green grass,

A1 un - der - cov - er, un - der - cov - er, she said. "Green green grass,

A2 un - der - cov - er, un - der - cov - er, she said. "Green green grass,

P.C.  $B_b, m7$   $A_b$

Gtr.

BG

Dr. *Cowbell*

64

S1 blue blue sky. You bet - ter throw a part - y on the day that I die."

S2 blue blue sky. You bet - ter throw a part - y on the day that I die."

A1 blue blue sky. You bet - ter throw a part - y on the day that I die."

A2 blue blue sky. You bet - ter throw a part - y on the day that I die."

P.C.  $D_b/f$   $A_b$   $D_b$   $A_b$   $E_b$   $A_b$

Gtr.

BG

Dr.

SSAA small Combo extra staves

# Green Green Grass

- George Ezra -

*Words and Music by George Barnett, Joel Pott and Stuart Price  
Arranged by Frank de Vreeze  
Original Key*

Pop/Rock ♩ = 113

A

Musical score for Soprano 1, Soprano 2, Alto 1, Alto 2, Piano Combo, Jazz Guitar, Bass Guitar, and Drums. The score includes lyrics and chord progressions.

**Lyrics:**  
 You bet - ter throw a part - y on the day that I die. Well she moves like light - ning - and she counts to -  
 You bet - ter throw a part - y on the day that I die. Well she moves like light - ning - and she counts to -  
 You bet - ter throw a part - y on the day that I die. Well she moves like light - ning - and she counts to -  
 You bet - ter throw a part - y on the day that I die. Well she moves like light - ning - and she counts to -

**Chord Progression:**  
 1 A<sup>b</sup> (No synth, play small notes) Fm A<sup>b</sup> D<sub>9</sub> A<sup>b</sup> D<sub>9</sub>/e<sup>b</sup> A<sup>b</sup>  
 2 A<sup>b</sup>

**Instrumentation:**  
 Soprano 1, Soprano 2, Alto 1, Alto 2, Piano Combo, Jazz Guitar, Bass Guitar, Drums.

B

11

S1 no one in here liv- ing gon- na make \_\_\_ it out a live. Get-a-way car for two young lov-ers.

S2 no one in here liv- ing gon- na make \_\_\_ it out a live. Get-a-way car for two young lov-ers.

A1 aah \_\_\_\_\_ Load it up \_\_\_ when the sun comes down. \_\_\_ (vn) Meandthe girl straight out of town. \_\_\_

A2 aah \_\_\_\_\_ Load it up \_\_\_ when the sun comes down. \_\_\_ (vn) Meandthe girl straight out of town. \_\_\_

1  
2

P.C. D<sub>b</sub> A<sub>b</sub> E<sub>b</sub> A<sub>b</sub> F<sup>m</sup> E<sub>b</sub> D<sub>b</sub> F<sup>m</sup> E<sub>b</sub>

Gtr. 8

BG

Dr.

21

S1 bet-ter throw a part - y on — the day that I die." "Green green grass, blue blue sky. You bet-ter throw a part - y on — the

S2 bet-ter throw a part - y on — the day that I die." "Green green grass, blue blue sky. You bet-ter throw a part - y on — the

A1 bet-ter throw a part - y on the day that I die." "Green green grass, blue blue sky. You bet-ter throw a part - y on the

A2 bet-ter throw a part - y on — the day that I die." "Green green grass, blue blue sky. You bet-ter throw a part - y on — the

1

2

PC: D<sup>b</sup> A<sup>b</sup> E<sup>b</sup> A<sup>b</sup> A<sup>b</sup> D<sup>b</sup>/f A<sup>b</sup> D<sup>b</sup> A<sup>b</sup>

Gtr: 8

BG

Dr:

**E**

31

S1 - - - nus, watch and \_\_\_ learn \_\_\_ how she sets the world on fi - re just to watch \_\_\_ the suck - er burn.

S2 - - - nus, watch and \_\_\_ learn \_\_\_ how she sets the world on fi - re just to watch \_\_\_ the suck - er burn.

A1 watch and \_\_\_ learn \_\_\_ aah \_\_\_ Load it up \_\_\_ when the sun comes down. \_\_\_

A2 watch and \_\_\_ learn \_\_\_ aah \_\_\_ Load it up \_\_\_ when the sun comes down. \_\_\_

1  
2

A<sup>b</sup> F<sup>m</sup> A<sup>b</sup> D<sup>b</sup> A<sup>b</sup> E<sup>b</sup> A<sup>b</sup> F<sup>m</sup> E<sup>b</sup>

P.C.

Gtr.

BG

Dr.

F

41

S1 "Green green grass, blue blue sky. You bet-ter throw a part - y on — the day that I die." "Green green grass,

S2 "Green green grass, blue blue sky. You bet-ter throw a part - y on — the day that I die." "Green green grass,

A1 "Green green grass, blue blue sky. You bet-ter throw a part - y on the day that I die." "Green green grass,

A2 "Green green grass, blue blue sky. You bet-ter throw a part - y on — the day that I die." "Green green grass,

1

2

A<sup>b</sup>

D<sup>b</sup>/F

A<sup>b</sup>

D<sup>b</sup>

A<sup>b</sup>

E<sup>b</sup>

A<sup>b</sup>

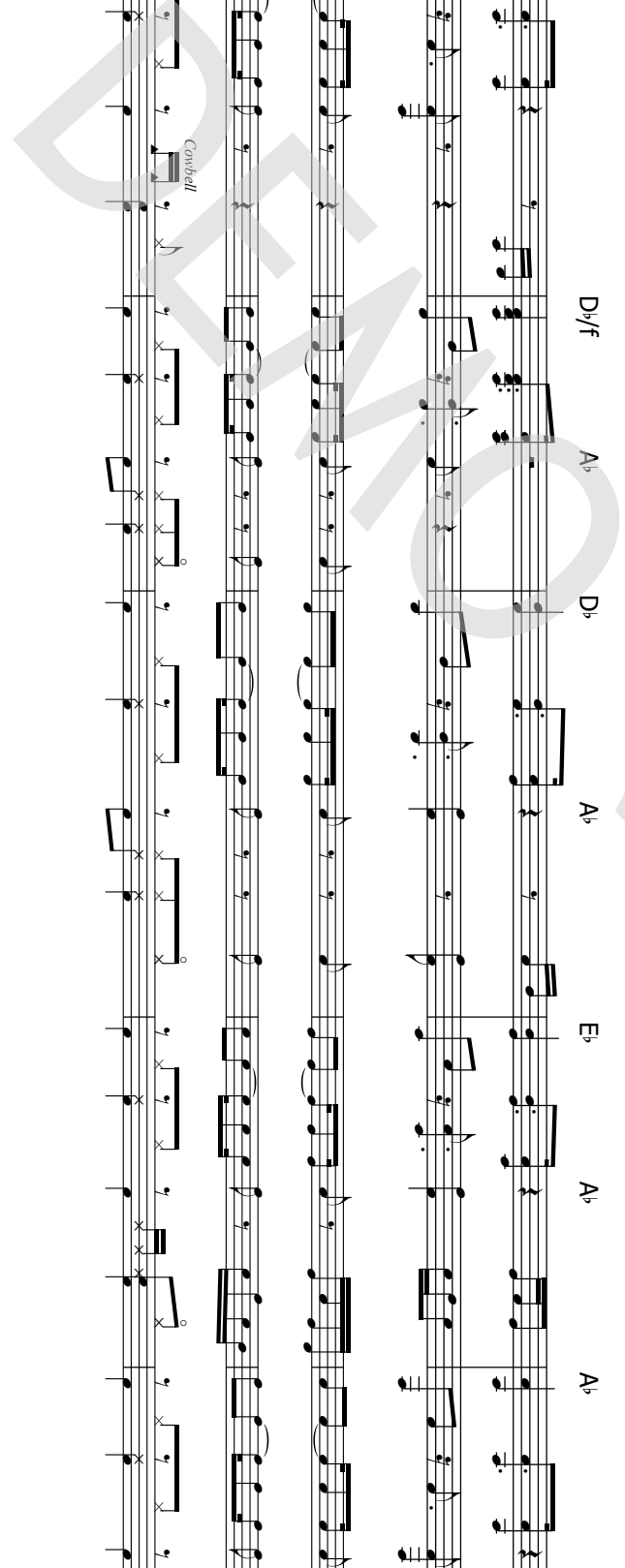
A<sup>b</sup>

P.C.

Gtr. 8

BG

Dr. *Combi*





Green Green Grass 13  
SSAA small Combo extra staves

61

S1 un - der-cov - er, un - der-cov - er, she said, "Green green grass, blue blue sky, You bet-ter throw a part - y on the

S2 un - der-cov - er, un - der-cov - er, she said, "Green green grass, blue blue sky, You bet-ter throw a part - y on the

A1 un - der-cov - er, un - der-cov - er, she said, "Green green grass, blue blue sky, You bet-ter throw a part - y on the

A2 un - der-cov - er, un - der-cov - er, she said, "Green green grass, blue blue sky, You bet-ter throw a part - y on the

1

2

B<sub>b</sub>m7 A<sub>b</sub> D<sub>b</sub>/F A<sub>b</sub> D<sub>b</sub> A<sub>b</sub>

P.C.

Gtr.

BG

Dr.

*Cowbell*

Green Green Grass 15  
SSAA small Combo extra staves

J

71

S1 "Green green grass, blue blue sky. You bet-ter throw a part - y on — the day that I die." "Green green grass,

S2 "Green green grass, blue blue sky. You bet-ter throw a part - y on — the day that I die." "Green green grass,

A1 "Green green grass, blue blue sky. You bet-ter throw a part - y on the day that I die." "Green green grass,

A2 "Green green grass, blue blue sky. You bet-ter throw a part - y on — the day that I die." "Green green grass,

1  
2

P.C. A $\flat$  D $\flat$ /F A $\flat$  D $\flat$  A $\flat$  E $\flat$  A $\flat$  A $\flat$

Gtr.

BG

Dr. *Combell*



SSAA Piano Solo Advanced

# Green Green Grass

- George Ezra -

*Words and Music by George Barnett, Joel Pott and Stuart Price  
Arranged by Frank de Vreeze  
Original Key*

Pop/Rock ♩ = 113

A

Soprano 1  
You bet-ter throw a part - y on the day that I die. Well she moves like

Soprano 2  
You bet-ter throw a part - y on the day that I die. Well she moves like

Alto 1  
You bet-ter throw a part - y on the day that I die.

Alto 2  
You bet-ter throw a part - y on the day that I die.

Piano Solo  
Advanced

$A^b$   $F^m$   $A^b$   $D^b$   $A^b$   $D^b/e^b$   
(No synth: play small notes)

© www.ChorusOnline.com / 0031 (0) 6 - 41 57 77 56

**B**

11

S1  
no one in here liv - ing gon - na make\_\_\_ it out a - live.

S2  
no one in here liv - ing gon - na make\_\_\_ it out a - live.

A1  
aah \_\_\_\_\_ Load it up\_\_\_ when the sun comes down.\_\_\_\_

A2  
aah \_\_\_\_\_ Load it up\_\_\_ when the sun comes down.\_\_\_\_

P.S.A.  
D $\flat$  A $\flat$  E $\flat$  A $\flat$  F $^m$  E $\flat$   
Let Ring

14

S1  
Get - a - way car for two young lov - ers. O - ver the hills and un - der - cov - er,

S2  
Get - a - way car for two young lov - ers. O - ver the hills and un - der - cov - er,

A1  
— (wn) Me and the girl\_\_\_ straight out of town.\_\_\_\_\_ (wn)

A2  
— (wn) Me and the girl\_\_\_ straight out of town.\_\_\_\_\_ (wn)

P.S.A.  
D $\flat$  F $^m$  E $\flat$  D $\flat$

23

S1  
"Green green grass, blue blue sky. You bet-ter throw a part - y on the

S2  
"Green green grass, blue blue sky. You bet-ter throw a part - y on the

A1  
"Green green grass, blue blue sky. You bet-ter throw a part - y on the

A2  
"Green green grass, blue blue sky. You bet-ter throw a part - y on the

P.S.A.  
A<sup>b</sup> D<sup>b</sup>/f A<sup>b</sup> D<sup>b</sup> A<sup>b</sup>

26

S1  
day that I die." We go to - geth - er, Ad - am and Eve, but the girl

S2  
day that I die." We go to - geth - er, Ad - am and Eve, but the girl

A1  
day that I die." Ad - am and Eve,

A2  
day that I die." Ad - am and Eve,

P.S.A.  
E<sup>b</sup> A<sup>b</sup> A<sup>b</sup> F<sup>m</sup> A<sup>b</sup>

**D**

E

35

S1  
Get - a - way car for two young lov - ers.

S2  
Get - a - way car for two young lov - ers.

A1  
Load it up \_\_\_ when the sun comes down. (wn) Me and the girl \_\_\_ straight out of town. \_\_\_

A2  
Load it up \_\_\_ when the sun comes down. (wn) Me and the girl \_\_\_ straight out of town. \_\_\_

P.S.A.  
F<sup>m</sup> E<sup>b</sup> D<sup>b</sup> F<sup>m</sup> E<sup>b</sup>  
Let Ring

38

S1  
O - ver the hills \_\_\_ and un - der - cov - er, un - der - cov - er, un - der - cov - er, \_\_\_ she said. Lead

S2  
O - ver the hills \_\_\_ and un - der - cov - er, un - der - cov - er, un - der - cov - er, \_\_\_ she said.

A1  
\_\_\_ (wn) un - der - cov - er, un - der - cov - er, \_\_\_

A2  
\_\_\_ (wn) un - der - cov - er, un - der - cov - er, \_\_\_

P.S.A.  
D<sup>b</sup>

G

47

S1  
bet-ter throw a part - y on\_ the day that I die." Throw a part - y, Throw a part -

S2  
bet-ter throw a part - y on\_ the day that I die." Throw a part - y, Throw a part -

A1  
bet-ter throw a part - y on the day that I die." Throw a part - y, Throw a part -

A2  
bet-ter throw a part - y on\_ the day that I die." Throw a part - y, Throw a part -

P.S.A.  
D<sup>b</sup> A<sup>b</sup> E<sup>b</sup> A<sup>b</sup> A<sup>b</sup>

50

S1  
- - y, yeah. — Throw a part - y, on\_ the day that I die." Throw a part -

S2  
- - y, yeah. — Throw a part - y, on\_ the day that I die." Throw a part -

A1  
- - y, Throw a part - y, on\_ the day that I die." Throw a part -

A2  
- - y, Throw a part - y, on\_ the day that I die." Throw a part -

P.S.A.  
F<sup>m</sup> A<sup>b</sup> D<sup>b</sup> A<sup>b</sup> E<sup>b</sup> A<sup>b</sup>

59

S1  
ooh O-ver the hills and un-der-cov-er, un-der-cov-er, un-der-cov-er,

S2  
ooh O-ver the hills and un-der-cov-er, un-der-cov-er, un-der-cov-er,

A1  
Me and the girl straight out of town. un-der-cov-er, un-der-cov-er,

A2  
Me and the girl straight out of town. un-der-cov-er, un-der-cov-er,

P.S.A.  
D<sup>b</sup>maj7 E<sup>b</sup> C<sup>m</sup>7 B<sup>b</sup>m7

I

62

S1  
she said. "Green green grass, blue blue sky. You

S2  
she said. "Green green grass, blue blue sky. You

A1  
she said. "Green green grass, blue blue sky. You

A2  
she said. "Green green grass, blue blue sky. You

P.S.A.  
A<sup>b</sup> F<sup>m</sup> A<sup>b</sup>

Green Green Grass 13  
SSAA Piano Solo Advanced

J

71

S1 "Green green grass, blue blue sky. You bet-ter throw a part - y on\_\_ the

S2 "Green green grass, blue blue sky. You bet-ter throw a part - y on\_\_ the

A1 "Green green grass, blue blue sky. You bet-ter throw a part - y on the

A2 "Green green grass, blue blue sky. You bet-ter throw a part - y on\_\_ the

P.S.A.  $A^b$   $F^m$   $A^b$   $D^b$   $A^b$

74

S1 day that I die." "Green green grass, blue blue\_\_ sky. You

S2 day that I die." "Green green grass, blue blue\_\_ sky. You

A1 day that I die." "Green green grass, blue blue\_\_ sky. You

A2 day that I die." "Green green grass, blue blue\_\_ sky. You

P.S.A.  $E^b$   $A^b$   $A^b$   $F^m$   $A^b$



SSAA Piano Solo Intermediate

# Green Green Grass

- George Ezra -

*Words and Music by George Barnett, Joel Pott and Stuart Price  
Arranged by Frank de Vreeze  
Original Key*

Pop/Rock ♩ = 113

A

Soprano 1

Soprano 2

Alto 1

Alto 2

Piano Solo Intermediate

You bet - ter throw a part - y on the

You bet - ter throw a part - y on the

You bet - ter throw a part - y on the

You bet - ter throw a part - y on the

$A^b$   $F^m$   $A^b$   $D^b$   $A^b$

(No synth: play small notes)

© www.ChorusOnline.com / 0031 (0) 6 - 41 57 77 56

10

S1  
S2  
A1  
A2

And there's no one in here liv - ing gon - na make \_\_\_ it out a - live.  
aah

P.S.I.

10 F<sup>m</sup> A<sup>b</sup> D<sup>b</sup> A<sup>b</sup> E<sup>b</sup> A<sup>b</sup>

**B**

13

S1  
S2  
A1  
A2

Get - a - way car for two young lov - ers.  
Load it up \_\_\_ when the sun comes down. \_\_\_ (wn) Me and the girl \_\_\_ straight out of town. \_\_\_

P.S.I.

13 F<sup>m</sup> E<sup>b</sup> D<sup>b</sup> F<sup>m</sup> E<sup>b</sup>

22

S1  
day that I die." "Green green grass, blue blue\_ sky. You

S2  
day that I die." "Green green grass, blue blue\_ sky. You

A1  
day that I die." "Green green grass, blue blue\_ sky. You

A2  
day that I die." "Green green grass, blue blue\_ sky. You

P.S.I.  
22 E $\flat$  A $\flat$  A $\flat$  D $\flat$ /f A $\flat$

25

S1  
bet-ter throw a part - y on\_ the day that I die." We go to - geth - er, Ad - am and Eve,

S2  
bet-ter throw a part - y on\_ the day that I die." We go to - geth - er, Ad - am and Eve,

A1  
bet-ter throw a part - y on the day that I die." Ad - am and Eve,

A2  
bet-ter throw a part - y on\_ the day that I die." Ad - am and Eve,

P.S.I.  
25 D $\flat$  A $\flat$  E $\flat$  A $\flat$  A $\flat$

**D**

E

34

S1  
the suck - er burn. Get - a - way car for two\_\_ young lov - ers.

S2  
the suck - er burn. Get - a - way car for two\_\_ young lov - ers.

A1  
Load it up\_\_ when the sun comes down. (wn)

A2  
Load it up\_\_ when the sun comes down. (wn)

P.S.I.  
34 Eb Ab Fm Eb Db

37

S1  
O - ver the hills and un - der - cov - er, un - der - cov - er, un - der - cov - er,

S2  
O - ver the hills and un - der - cov - er, un - der - cov - er, un - der - cov - er,

A1  
Me and the girl\_\_ straight out of town. (wn) un - der - cov - er, un - der - cov - er,

A2  
Me and the girl\_\_ straight out of town. (wn) un - der - cov - er, un - der - cov - er,

P.S.I.  
37 Fm Eb Db

46

S1  
blue blue sky. You bet-ter throw a part - y on \_ the day that I die." Throw a part -

S2  
blue blue sky. You bet-ter throw a part - y on \_ the day that I die." Throw a part -

A1  
blue blue sky. You bet-ter throw a part - y on the day that I die." Throw a part -

A2  
blue blue sky. You bet-ter throw a part - y on \_ the day that I die." Throw a part -

P.S.I.  
46 D $\flat$ /f A $\flat$  D $\flat$  A $\flat$  E $\flat$  A $\flat$

**G**

49

S1  
- - y, Throw a part - - y, yeah. \_ Throw a part - y, on \_ the

S2  
- - y, Throw a part - - y, yeah. \_ Throw a part - y, on \_ the

A1  
- - y, Throw a part - - y, Throw a part - y, on \_ the

A2  
- - y, Throw a part - - y, Throw a part - y, on \_ the

P.S.I.  
49 A $\flat$  F $^m$  A $\flat$  D $\flat$  A $\flat$

Green Green Grass 11  
SSAA Piano Solo Intermediate

58

S1  
Get - a - way car for two young lov - ers. ooh O - ver the hills and un - der - cov - er,

S2  
Get - a - way car for two young lov - ers. ooh O - ver the hills and un - der - cov - er,

A1  
— Me and the girl — straight out of town. —

A2  
— Me and the girl — straight out of town. —

P.S.I.  
58 E $\flat$  D $\flat$ maj7 E $\flat$  C $m$ 7

61

S1  
un - der - cov - er, un - der - cov - er, she said. "Green green grass,

S2  
un - der - cov - er, un - der - cov - er, she said. "Green green grass,

A1  
un - der - cov - er, un - der - cov - er, she said. "Green green grass,

A2  
un - der - cov - er, un - der - cov - er, she said. "Green green grass,

P.S.I.  
61 B $\flat$ m7 A $\flat$

I

Green Green Grass 13  
SSAA Piano Solo Intermediate

J

70

S1  
day that I die." "Green green grass, blue blue \_ sky. You

S2  
day that I die." "Green green grass, blue blue \_ sky. You

A1  
day that I die." "Green green grass, blue blue \_ sky. You

A2  
day that I die." "Green green grass, blue blue \_ sky. You

P.S.I.  
70 Eb Ab Ab Db/f Ab

73

S1  
bet - ter throw a part - y on \_ the day that I die." "Green green grass,

S2  
bet - ter throw a part - y on \_ the day that I die." "Green green grass,

A1  
bet - ter throw a part - y on the day that I die." "Green green grass,

A2  
bet - ter throw a part - y on \_ the day that I die." "Green green grass,

P.S.I.  
73 Db Ab Eb Ab Ab

# Green Green Grass

- George Ezra -

*Words and Music by George Barnett, Joel Pott and Stuart Price  
Arranged by Frank de Vreeze  
Original Key*

Pop/Rock ♩ = 113

**A**

Soprano 1  
Soprano 2  
Alto 1  
Alto 2

You bet-ter throw a part - y on the  
You bet-ter throw a part - y on the  
You bet-ter throw a part - y on the  
You bet-ter throw a part - y on the

4  
S1  
S2  
A1  
A2

day that I die. Well she moves like light - ning, and she counts to \_\_\_ three. Then she  
day that I die. Well she moves like light - ning, and she counts to \_\_\_ three. Then she  
day that I die.  
day that I die.

16 Lead

S1 O-ver the hills and un-der-cov - er, un-der-cov - er, un-der-cov - er, \_\_\_ she said.

S2 O-ver the hills and un-der-cov - er, un-der-cov - er, un-der-cov - er, \_\_\_ she said.

A1 \_\_\_ (wn) un-der-cov - er, un-der-cov - er, \_\_\_

A2 \_\_\_ (wn) un-der-cov - er, un-der-cov - er, \_\_\_

**C**

19

S1 "Green green grass, blue blue sky. You bet-ter throw a part - y on \_\_\_ the

S2 "Green green grass, blue blue sky. You bet-ter throw a part - y on \_\_\_ the

A1 "Green green grass, blue blue sky. You bet-ter throw a part - y on the

A2 "Green green grass, blue blue sky. You bet-ter throw a part - y on \_\_\_ the

22

S1 day that I die." "Green green grass, blue blue sky. You

S2 day that I die." "Green green grass, blue blue sky. You

A1 day that I die." "Green green grass, blue blue sky. You

A2 day that I die." "Green green grass, blue blue sky. You

**E**

34

S1  
— the suck - er burn. Get-a-way car for two young lov-ers.

S2  
— the suck - er burn. Get-a-way car for two young lov-ers.

A1  
Load it up — when the sun comes down. — (wn)

A2  
Load it up — when the sun comes down. — (wn)

37

S1  
O-ver the hills and un-der-cov - er, un-der-cov - er, un-der-cov - er,

S2  
O-ver the hills and un-der-cov - er, un-der-cov - er, un-der-cov - er,

A1  
Me and the girl straight out of town. — (wn) un-der-cov - er, un-der-cov - er,

A2  
Me and the girl straight out of town. — (wn) un-der-cov - er, un-der-cov - er,

**F**

40

S1  
— she said. "Green green grass, blue blue sky. You

S2  
— she said. "Green green grass, blue blue sky. You

A1  
— "Green green grass, blue blue sky. You

A2  
— "Green green grass, blue blue sky. You

Lead

52

S1  
day that I die." Throw a part - y, Throw a part - y, yeah. Throw a part-

S2  
day that I die." Throw a part - y, Throw a part - y, yeah. Throw a part-

A1  
day that I die." Throw a part - y, Throw a part - y, Throw a part-

A2  
day that I die." Throw a part - y, **H** Throw a part - y, Throw a part-

55

S1  
- y, on the day that I die." ooh

S2  
- y, on the day that I die." ooh

A1  
- y, on the day that I die." Load it up when the sun comes down.

A2  
- y, on the day that I die." Load it up when the sun comes down.

58

S1  
Get-a-way car for two young lov-ers. ooh O-ver the hills and un-der-cov - er,

S2  
Get-a-way car for two young lov-ers. ooh O-ver the hills and un-der-cov - er,

A1  
— Me and the girl straight out of town.

A2  
— Me and the girl straight out of town.

J

70

S1  
day that I die." "Green green grass, blue blue sky. You

S2  
day that I die." "Green green grass, blue blue sky. You

A1  
day that I die." "Green green grass, blue blue sky. You

A2  
day that I die." "Green green grass, blue blue sky. You

73

S1  
bet-ter throw a part - y on\_ the day that I die." "Green green grass,

S2  
bet-ter throw a part - y on\_ the day that I die." "Green green grass,

A1  
bet-ter throw a part - y on the day that I die." "Green green grass,

A2  
bet-ter throw a part - y on\_ the day that I die." "Green green grass,

76

S1  
blue blue sky. You bet-ter throw a part - y on\_ the day that I die."

S2  
blue blue sky. You bet-ter throw a part - y on\_ the day that I die."

A1  
blue blue sky. You bet-ter throw a part - y on the day that I die."

A2  
blue blue sky. You bet-ter throw a part - y on the day that I die."



C Instrument

# Green Green Grass

- George Ezra -

Words and Music by George Barnett, Joel Pott and Stuart Price

Arranged by Frank de Vreeze

Original Key

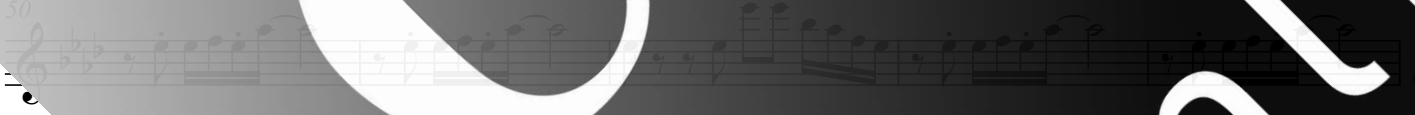
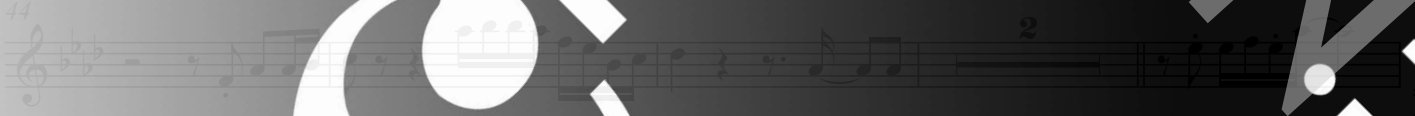
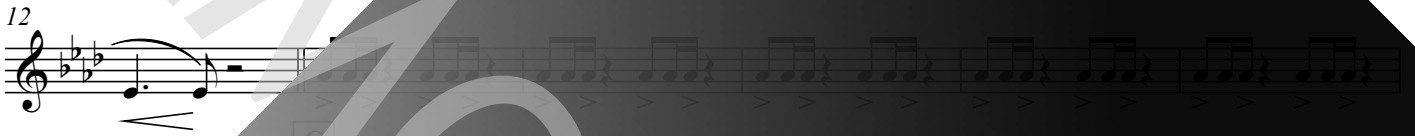
Pop/Rock ♩ = 113

A

C Instr.



B



Copyright © 2022 BMG Rights Management (UK) Ltd. and Elodine Songs Limited  
All Rights for BMG Rights Management (UK) Ltd. Administered by BMG Rights Management (US) LLC  
All Rights for Elodine Songs Limited Administered by Warner Chappell Music Ltd., London, W8 5DA  
All Rights Reserved - Used by Permission

ORIGINAL DO NOT COPY

© www.chorusonline.com (0) 6 - 41 57 77 56



Bb Instrument

# Green Green Grass

- George Ezra -

Words and Music by George Barnett, Joel Pott and Stuart Price

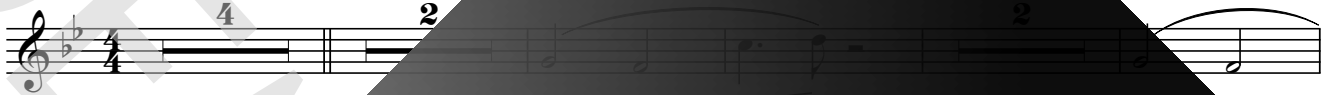
Arranged by Frank de Vreeze

Original Key

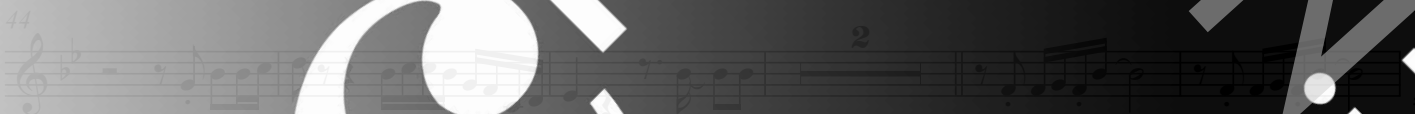
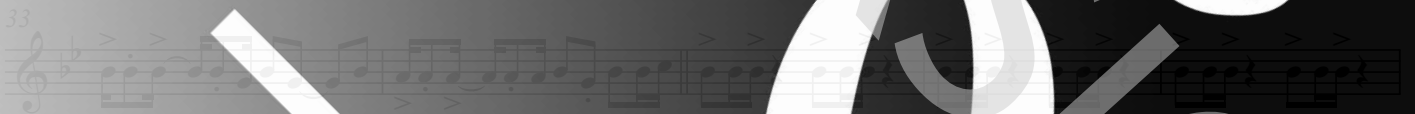
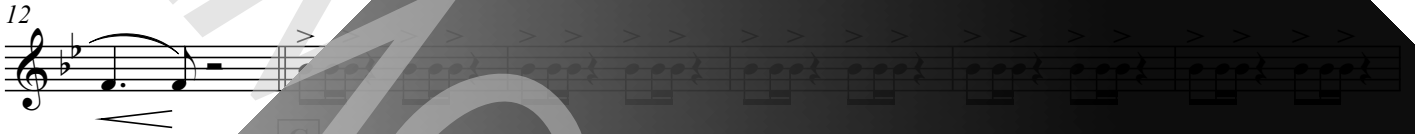
Pop/Rock ♩ = 113

A

Bb Instr.



B



Copyright © 2022 BMG Rights Management (UK) Ltd. and Elodine Songs Limited  
All Rights for BMG Rights Management (UK) Ltd. Administered by BMG Rights Management (US) LLC  
All Rights for Elodine Songs Limited Administered by Warner Chappell Music Ltd., London, W8 5DA  
All Rights Reserved - Used by Permission

ORIGINAL DO NOT COPY

chorus online

© www.chorusonline.com (0) 6 - 41 57 77 56



E♭ Instrument

# Green Green Grass

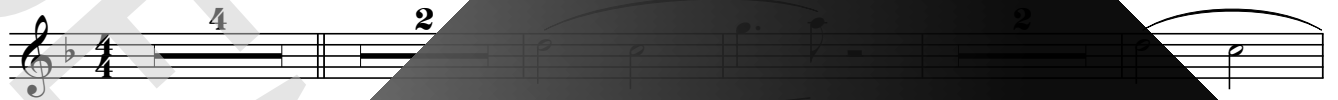
- George Ezra -

Words and Music by George Barnett, Joel Pott and Stuart Price  
Arranged by Frank de Vreeze  
Original Key

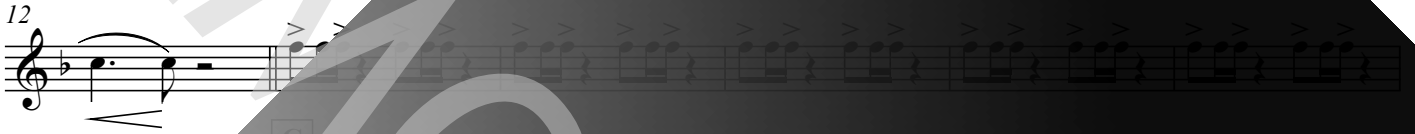
Pop/Rock ♩ = 113

A

E♭ Instr.



B



Copyright © 2022 BMG Rights Management (UK) Ltd. and Elodine Songs Limited  
All Rights for BMG Rights Management (UK) Ltd. Administered by BMG Rights Management (US) LLC  
All Rights for Elodine Songs Limited Administered by Warner Chappell Music Ltd., London, W8 5DA  
All Rights Reserved - Used by Permission

ORIGINAL DO NOT COPY

ORIGINAL DO NOT COPY

© www.chorusonline.com (0) 6 - 41 57 77 56



Piano Combo

# Green Green Grass

- George Ezra -

*Words and Music by George Barnett, Joel Pott and Stuart Price*

*Arranged by Frank de Vreeze*

*Original Key*

Pop/Rock ♩ = 113

A

A<sup>b</sup> F<sup>m</sup> A<sup>b</sup> D<sup>b</sup> A<sup>b</sup> D/e<sup>b</sup> A<sup>b</sup>

(No synth: play small chords)

F<sup>m</sup> A<sup>b</sup> D<sup>b</sup> A<sup>b</sup> E<sup>b</sup> F<sup>m</sup> A<sup>b</sup>

B

D<sup>b</sup> A<sup>b</sup> E<sup>b</sup> A<sup>b</sup> F<sup>m</sup> E<sup>b</sup> D<sup>b</sup> F<sup>m</sup> E<sup>b</sup>

C

D<sup>b</sup> A<sup>b</sup> D/e<sup>b</sup> A<sup>b</sup>



www.ChorusOnline.com | 06 - 41 57 77 56



Piano Solo Advanced

# Green Green Grass

- George Ezra -

Words and Music by George Barnett, Joel Pott and Stuart Price  
Arranged by Frank de Vreeze  
Original Key

Pop/Rock ♩ = 113

A

A<sup>b</sup> F<sup>m</sup> A<sup>b</sup> D<sup>b</sup> A<sup>b</sup> D/e<sup>b</sup>

(No synth pad) (No synth pad)

5 A<sup>b</sup> F<sup>m</sup> A<sup>b</sup> E<sup>b</sup> A<sup>b</sup>

9 A<sup>b</sup> F<sup>m</sup> A<sup>b</sup> D<sup>b</sup> A<sup>b</sup>

B

13 F<sup>m</sup> Let Ring E<sup>b</sup> D<sup>b</sup> F<sup>m</sup> E<sup>b</sup> D<sup>b</sup>

Copyright © 2022 BMG Rights Management (UK) Ltd. and Elodine Songs Limited  
All Rights for BMG Rights Management (UK) Ltd. Administered by BMG Rights Management (US) LLC  
All Rights for Elodine Songs Limited Administered by Warner Chappell Music Ltd., London, W8 5DA  
All Rights Reserved - Used by Permission

ORIGINAL DO NOT COPY



www.ChorusOnline.com 06-41 57 77 56



Piano Solo Intermediate

# Green Green Grass

- George Ezra -

*Words and Music by George Barnett, Joel Pott and Stuart Price*

*Arranged by Frank de Vreeze*

*Original Key*

Pop/Rock ♩ = 113

**A**

(No synth: play small triangles)

Chords: A<sup>b</sup>, F<sup>m</sup>, D<sup>b</sup>, A<sup>+</sup>, D<sup>b</sup>/e<sup>b</sup>, A<sup>+</sup>

Chords: F<sup>m</sup>, A<sup>b</sup>, D<sup>b</sup>, A<sup>b</sup>, E<sup>b</sup>, F<sup>m</sup>, A<sup>b</sup>

**B**

Chords: D<sup>b</sup>, A<sup>b</sup>, E<sup>b</sup>, A<sup>b</sup>, F<sup>m</sup>, F<sup>m</sup>, E<sup>b</sup>

**C**

Chords: D<sup>b</sup>, A<sup>b</sup>, D<sup>b</sup>/f, A<sup>b</sup>



Synthesizer

# Green Green Grass

- George Ezra -

Words and Music by George Barnett, Joel Pott and Stuart Price

Arranged by Frank de Vreeze

Original Key

Pop/Rock ♩ = 113

A

Strings

Strings

Vibraphone (Steel drum)

6

11

Polysynth

Atmosphere

16

(8<sup>va</sup>)

21

chorus online

© www.chorusonline.com 06-41 57 77 56



Guitar

# Green Green Grass

- George Ezra -

Words and Music by George Barnett, Joel Pott and Stuart Price

Arranged by Frank de Vreeze

Original Key

Pop/Rock ♩ = 113

A

A<sup>b</sup>

F<sup>m</sup>

A<sup>b</sup>

D<sup>b</sup>

A<sup>b</sup>

D<sup>b</sup>/e<sup>b</sup>

Jazz Guitar

Guitar

9

15

20

26

30

36

Copyright © 2022 BMG Rights Management (UK) Ltd. and Elodine Songs Limited  
 All Rights for BMG Rights Management (UK) Ltd. Administered by BMG Rights Management (US) LLC  
 All Rights for Elodine Songs Limited Administered by Warner Chappell Music Ltd., London, W8 5DA  
 All Rights Reserved - Used by Permission

ORIGINAL DO NOT COPY

© www.chorusonline.com (0) 6 - 41 57 77 56



Bass Guitar

# Green Green Grass

- George Ezra -

Words and Music by George Barnett, Joel Pott and Stuart Price  
Arranged by Frank de Vreeze  
Original Key

Pop/Rock ♩ = 113

A

A<sup>b</sup> F<sup>m</sup> A<sup>b</sup> D<sup>b</sup> A<sup>b</sup>

Bass Guitar

8

F<sup>b</sup> A<sup>b</sup> F<sup>m</sup> A<sup>b</sup> D<sup>b</sup> A<sup>b</sup> E<sup>b</sup> A<sup>b</sup>

B

C

13

A<sup>b</sup> D<sup>b</sup>/f A<sup>b</sup> D<sup>b</sup> A<sup>b</sup> E<sup>b</sup>

23

A<sup>b</sup> D<sup>b</sup>/f A<sup>b</sup> D<sup>b</sup> A<sup>b</sup> E<sup>b</sup>

28

F<sup>m</sup> A<sup>b</sup> D<sup>b</sup> A<sup>b</sup> E<sup>b</sup> A<sup>b</sup> A<sup>b</sup>

33

D<sup>b</sup> A<sup>b</sup> E<sup>b</sup> A<sup>b</sup> D<sup>b</sup>/f A<sup>b</sup> D<sup>b</sup>

43

D<sup>b</sup> A<sup>b</sup> E<sup>b</sup> A<sup>b</sup> D<sup>b</sup>/f A<sup>b</sup> D<sup>b</sup>

Copyright © 2022 BMG Rights Management (UK) Ltd. and Elodine Songs Limited  
All Rights for BMG Rights Management (UK) Ltd. Administered by BMG Rights Management (US) LLC  
All Rights for Elodine Songs Limited Administered by Warner Chappell Music Ltd., London, W8 5DA  
All Rights Reserved - Used by Permission

ORIGINAL DO NOT COPY

© www.chorusonline.com (0) 6 - 41 57 77 56

# Drumkit/Percussion

High Tom  
Hi-Hat closed  
Hi-Hat open  
Shareclick  
Bassdrum (Kick)  
Sharedrum  
Hi-Hat foot  
Low Tom  
Ride Cymbal  
Crash Cymbal  
Floor Tom  
Ride Bell/Cup  
Splash Cymbal  
Triangle mute  
Tambourine Beating  
Triangle open

Shaker (eggs)  
Claves  
High Tmbale  
Sleigh Bells  
Bell Tree  
Maracas  
Wind Chimes  
Handclap  
Guro  
Woodblock High  
Timbale Low  
Agogo High  
Cowbell  
Conga  
Cabasa  
Woodblock  
Agogo

chorus<sup>®</sup>  
online



Drums

# Green Green Grass

- George Ezra -

*Words and Music by George Barnett, Joel Pott and Stuart Price*

*Arranged by Frank de Vreeze*

*Original Key*

Pop/Rock ♩ = 113

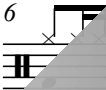
A

clap

Drums



6



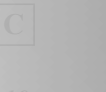
11



15



C



19

*Cowbell*



25



30





Leadsheet

# Green Green Grass

- George Ezra -

Words and Music by George Barnett, Joel Pott and Stuart Price

Arranged by Frank de Vreeze

Original Key

Pop/Rock ♩ = 113

A

A<sup>b</sup> F<sup>m</sup> A<sup>b</sup> D<sup>b</sup> A<sup>b</sup> D<sup>b</sup>/e<sup>b</sup>

(No synth: play small notes)

Well she moves like

5

A<sup>b</sup> F<sup>m</sup> A<sup>b</sup> D<sup>b</sup> A<sup>b</sup>

light - ning, and she counts to \_\_\_ times. Then she turns out all the lights and says she's

8

E<sup>b</sup> A<sup>b</sup> A<sup>b</sup> F<sup>m</sup> A<sup>b</sup> A<sup>b</sup>

com - ing for \_\_\_ me. Now put your hands \_\_\_ up, she's a list. And there's

11

D<sup>b</sup> A<sup>b</sup> E<sup>b</sup> A<sup>b</sup> F<sup>m</sup> A<sup>b</sup> F<sup>m</sup>

no one in here liv - ing gon - na make \_\_\_ it out a - live. Load \_\_\_ up, the sun comes down.

14

D<sup>b</sup> F<sup>m</sup> A<sup>b</sup> A<sup>b</sup> F<sup>m</sup> A<sup>b</sup> F<sup>m</sup>

Get - a - way car for \_\_\_ would - by - ers. Me and the girl \_\_\_ straight out of

16

D<sup>b</sup> A<sup>b</sup> A<sup>b</sup> F<sup>m</sup> A<sup>b</sup> F<sup>m</sup> A<sup>b</sup> F<sup>m</sup>

O - ver the hills and un - der - cov - er, un - der - cov - er, un - der - cov - er, \_\_\_ she said, "Green green grass,



Lyrics

# Green Green Grass

- George Ezra -

*Words and Music by George Barnett, Joel Pott and Stuart Price*

*Arranged by Frank de Vreeze*

*Original Key*

A:  
 Well she moves like lightning  
 And she counts to three  
 Then she turns out all the lights  
 And says she's coming for me  
 Now put your hands up  
 This is a heist  
 And there's no one in here living  
 Gonna make it out alive

B:  
 Load it up when the sun comes down  
 Getaway car for two young lovers  
 Me and the girl straight out of town  
 Over the hills and undercover  
 Undercover, undercover  
 She said

C:  
 Green green grass, blue blue sky  
 You better throw a party on the day that I die  
 Green green grass, blue blue sky  
 You better throw a party on the day that I die

D:  
 We go together, Adam and Eve  
 But the girl is so much more than just another apple thief  
 Yeah, she's a genius (genius), watch and learn  
 How she sets the world on fire just to watch the sucker burn

E:  
 Load it up when the sun comes down  
 Getaway car for two young lovers  
 Me and the girl straight out of town  
 Over the hills and undercover  
 Undercover, undercover  
 She said

F:  
 Green green grass, blue blue sky  
 You better throw a party on the day that I die  
 Green green grass, blue blue sky  
 You better throw a party on the day that I die

G:  
 Throw a party (yeah), throw a party, yeah  
 Throw a party (woo), on the day that I die  
 Throw a party (hey), throw a party, yeah  
 Throw a party, on the day that I die

H:  
 Load it up when the sun comes down  
 Getaway car for two young lovers  
 Me and the girl straight out of town  
 Over the hills and undercover  
 Undercover, undercover  
 She said

I:  
 Green green grass, blue blue sky  
 You better throw a party on the day that I die  
 Green green grass, blue blue sky  
 You better throw a party on the day that I die

J:  
 Green green grass, blue blue sky  
 You better throw a party on the day that I die  
 Green green grass, blue blue sky  
 You better throw a party on the day that I die

