



## **Marvin Gaye - SSAATB**

Pag.

02	Full score combo C instrument
11	Full score combo Bb instrument
20	Full score combo Eb instrument
29	Full score combo 4 extra staves
43	Full score small combo
54	Full score small combo 2 extra staves
68	Full score Vocals (SSAATB) Piano Advanced
79	Full score Vocals (SSAATB) Piano Intermediate
90	Vocals (SSAATB)
99	C instrument
101	Bb instrument
103	Eb instrument
105	Piano Combo
108	Piano Solo Advanced
111	Piano Solo Intermediate
114	Synthesizer
116	Guitar
118	Bass guitar
120	Drumkit
123	Percussion
125	Leadsheet (melody, lyrics, chords)
129	Lyrics



SSAATB Combo C

# Marvin Gaye

- Charlie Puth ft. Meghan Trainor

Words and Music by *Charlie Puth, Julie Frost, Jacob Luttrell, Nick Seeley*  
Arranged by *Frank de Vreeze*  
Original Key

DEMO

DEMO

Doo-Wop - Soul ♩ = 110

A

Soprano

Alto

Tenor  
Let's Mar - vin Gaye and get it on. You got the heal - ing that I want.

Bass  
Let's Mar - vin Gaye and get it on. You got the heal - ing that I want.

C Instr.

Piano Combo  
E No band: play small notes E C#m  
Rock Organ

Synthesizer  
8va

Guitar  
Jazz Guitar

Bass Guitar  
Acoustic Bass

Drums  
Tambourine

Percussion  
Hand clap

© www.ChorusOnline.com / 0031 (0) 6 - 41 57 77 56



Marvin Gaye 3  
SSAATB Combo C

C

16

S dooh Woah oh - oh - oh oh oh there's love, ba -

A dooh Woah oh - oh - oh oh oh there's love, ba -

T kar - ma su - tra show and tell. Yeah. Woah oh - oh - oh there's lov - ing in your eyes that

B kar - ma su - tra show and tell. Yeah. Woah oh - oh - oh there's lov - ing in your eyes that

C

P.C. B E G<sup>7</sup>

Synth

Gtr. Light Strumming

Bass

Dr.

Perc.

21

S dooh ooh that pulls me clo - ser it's so sub - tle I'm in trou - ble

A dooh ooh that pulls me clo - ser it's so sub - tle I'm in trou - ble

T pulls me clo - ser it's so sub - tle I'm in trou - ble But I'd love to be in trou - ble with you.

B pulls me clo - ser it's so sub - tle I'm in trou - ble But I'd love to be in trou - ble with you.

C

P.C. C<sup>m</sup> F# F#<sup>m</sup>

Synth

Gtr.

Bass

Dr.

Perc.

Marvin Gaye 5  
SSAATB Combo C

36

S I'm scream-ing mer - cy mer - cy please. Just like they say it in the song, un - til the dawn. Let's Mar - vin Gaye and get it on.

A Hey! Woah oh - oh - oh oh Hey! Woah oh - oh - oh oh Hey!

T I'm scream-ing mer - cy mer - cy please. Just like they say it in the song, un - til the dawn. Let's Mar - vin Gaye and get it on.

B Hey! Woah oh - oh - oh oh Hey! Woah oh - oh - oh oh Hey!

C

P.C. C<sup>#m</sup> A B

Synth

Gtr.

Bass

Dr.

Perc.

41

S And when you leave me all a - lone, I'm like a stray with - out a home.

A Woah oh - oh - oh oh And when you leave me all a - lone, I'm like a stray with - out a home.

T ooh ooh

B Woah oh - oh - oh oh ooh ooh

C E B<sup>aug</sup> let ring

P.C.

Synth muted

Gtr.

Bass

Dr.

Perc.

H

56

S  
ble But I'd love to be in trou-ble with your. Let's Mar- vin Gaye and get it on. \_

A  
ble But I'd love to be in trou-ble with you. Let's Mar- vin Gaye and get it on. \_

T  
I'm in trou- ble Let's Mar- vin Gaye and get it on. \_ You got the heal- ing that I

B  
I'm in trou- ble Let's Mar- vin Gaye and get it on. \_ You got the heal- ing that I

C  
F#m7 B E

P.C.

Synth

Gtr. *Jazz Guitar*

Bass *Acoustic Bass*

Dr.

Perc. *Hand clap*

61

S  
You got the heal- ing that I want. ba - - - dooh un- til the dawn. \_ ba - - - dooh

A  
You got the heal- ing that I want. ba - - - dooh un- til the dawn. \_ ba - - - dooh

T  
want. \_ Just like they say it in the song, \_ un- til the dawn. \_ Let's Mar- vin Gaye and get it on. \_

B  
want. \_ Just like they say it in the song, \_ un- til the dawn. \_ Let's Mar- vin Gaye and get it on. \_

C  
C#m A B E

P.C.

Synth

Gtr.

Bass

Dr. *Rev. Cymbal*

Perc.

Marvin Gaye 9  
SSAATB Combo C

76

S I'm scream-ing mer - cy mer - cy please. Just like they say it in the song, un - til the dawn. Let's Mar - vin Gaye and get it on.

A I'm scream-ing mer - cy mer - cy please. Just like they say it in the song, un - til the dawn. Let's Mar - vin Gaye and get it on.

T I'm scream-ing mer - cy mer - cy please. Just like they say it in the song, un - til the dawn. Let's Mar - vin Gaye and get it on.

B I'm scream-ing mer - cy mer - cy please. Just like they say it in the song, un - til the dawn. Let's Mar - vin Gaye and get it on.

C

P.C. C<sup>m</sup> A B

Synth (8<sup>va</sup>)

Gtr.

Bass

Dr.

Perc.

81

S — Just like they say it in the song, un - til the dawn. Let's Mar - vin Gaye and get it on. ooh.

A — oh un - til the dawn. Let's Mar - vin Gaye and get it on. ooh.

T — Just like they say it in the song, un - til the dawn. Let's Mar - vin Gaye and get it on. ooh.

B — oh un - til the dawn. Let's Mar - vin Gaye and get it on. ooh.

C E C<sup>m</sup> A B E

P.C.

Synth (8<sup>va</sup>)

Gtr.

Bass

Dr.

Perc.

# Marvin Gaye

- Charlie Puth ft. Meghan Trainor -

Words and Music by *Charlie Puth, Julie Frost, Jacob Luttrell, Nick Seeley*  
Arranged by *Frank de Vreeze*  
Original Key

DEMO

LEAF

Doo-Wop - Soul ♩ = 110

A

Soprano

Alto

Tenor  
Let's Mar - vin Gaye and get it on. You got the heal - ing that I want.

Bass  
Let's Mar - vin Gaye and get it on. You got the heal - ing that I want.

Bb Instr.  
E No band: play small notes E C<sub>6</sub><sup>m</sup>

Piano Combo  
Rock Organ

Synthesizer  
8<sup>va</sup>

Guitar  
Jazz Guitar

Bass Guitar  
Acoustic Bass

Drums  
Tambourine

Percussion  
Hand clap

© www.ChorusOnline.com / 0031 (0) 6 - 41 57 77 56

C

16

S dooh Woah oh - oh - oh oh oh there's love, ba -

A dooh Woah oh - oh - oh oh oh there's love, ba -

T kar - ma su - tra show and tell. Yeah. Woah oh - oh - oh there's lov - ing in your eyes that

B kar - ma su - tra show and tell. Yeah. Woah oh - oh - oh there's lov - ing in your eyes that

Bb

P.C. B E G#7

Synth

Gtr. Light Strumming

Bass

Dr.

Perc.

21

S dooh ooh that pulls me clo - ser it's so sub - tle I'm in trou - ble

A dooh ooh that pulls me clo - ser it's so sub - tle I'm in trou - ble

T pulls me clo - ser it's so sub - tle I'm in trou - ble But I'd love to be in trou - ble with you.

B pulls me clo - ser it's so sub - tle I'm in trou - ble But I'd love to be in trou - ble with you.

Bb C#m F# F#m

P.C.

Synth

Gtr.

Bass

Dr.

Perc.

36

S  
I'm scream-ing mer - cy mer - cy please. Just like they say it in the song, un - til the dawn. Let's Mar - vin Gaye and get it on.

A  
Hey! Woah oh - oh - oh oh Hey! Woah oh - oh - oh oh Hey!

T  
I'm scream-ing mer - cy mer - cy please. Just like they say it in the song, un - til the dawn. Let's Mar - vin Gaye and get it on.

B  
Hey! Woah oh - oh - oh oh Hey! Woah oh - oh - oh oh Hey!

Bb

P.C.  
C<sup>m</sup> A B

Synth

Gtr.

Bass

Dr.

Perc.

41

S  
And when you leave me all a - lone, I'm like a stray with - out a home.

A  
Woah oh - oh - oh oh And when you leave me all a - lone, I'm like a stray with - out a home.

T  
ooh ooh

B  
Woah oh - oh - oh oh ooh ooh

Bb

P.C.  
E B<sup>aug</sup> let ring

Synth

Gtr.  
muted

Bass

Dr.

Perc.

56

S  
ble But I'd love to be in trou-ble with you. Let's Mar - vin Gaye and get it on. \_

A  
ble But I'd love to be in trou-ble with you. Let's Mar - vin Gaye and get it on. \_

T  
I'm in trou - ble Let's Mar - vin Gaye and get it on. \_ You got the heal - ing that I

B  
I'm in trou - ble Let's Mar - vin Gaye and get it on. \_ You got the heal - ing that I

Bb

P.C.  
F#m7 B E

Synth

Gtr. *Jazz Guitar*

Bass *Acoustic Bass*

Dr.

Perc. *Hand clap*

61

S  
You got the heal - ing that I want. ba - - dooh un - til the dawn. \_ ba - - dooh

A  
You got the heal - ing that I want. ba - - dooh un - til the dawn. \_ ba - - dooh

T  
want. \_ Just like they say it in the song, \_ un - til the dawn. \_ Let's Mar - vin Gaye and get it on. \_

B  
want. \_ Just like they say it in the song, \_ un - til the dawn. \_ Let's Mar - vin Gaye and get it on. \_

Bb

P.C.  
C#m A B E

Synth

Gtr.

Bass

Dr. *Rev. Cymbal*

Perc.

# Marvin Gaye 9

SSAATB Combo Bb

76

S  
I'm scream-ing mer - cy mer - cy please. Just like they say it in the song, un - til the dawn. Let's Mar - vin Gaye and get it on.

A  
I'm scream-ing mer - cy mer - cy please. Just like they say it in the song, un - til the dawn. Let's Mar - vin Gaye and get it on.

T  
I'm scream-ing mer - cy mer - cy please. Just like they say it in the song, un - til the dawn. Let's Mar - vin Gaye and get it on.

B  
I'm scream-ing mer - cy mer - cy please. Just like they say it in the song, un - til the dawn. Let's Mar - vin Gaye and get it on.

Bb

P.C.  
C<sup>m</sup> A B

Synth

Gtr.

Bass

Dr.

Perc.

81

S  
Just like they say it in the song, un - til the dawn. Let's Mar - vin Gaye and get it on. ooh.

A  
oh un - til the dawn. Let's Mar - vin Gaye and get it on. ooh.

T  
Just like they say it in the song, un - til the dawn. Let's Mar - vin Gaye and get it on. ooh.

B  
oh un - til the dawn. Let's Mar - vin Gaye and get it on. ooh.

Bb

P.C.  
E C<sup>#m</sup> A B E

Synth

Gtr.

Bass

Dr.

Perc.



SSAATB Combo Eb

# Marvin Gaye

- Charlie Puth ft. Meghan Trainor

Words and Music by *Charlie Puth, Julie Frost, Jacob Luttrell, Nick Seeley*  
Arranged by *Frank de Vreeze*  
Original Key

DEMO

DEMO

Doo-Wop - Soul ♩ = 110

A

Soprano

Alto

Tenor  
Let's Mar - vin Gaye and get it on. You got the heal - ing that I want.

Bass  
Let's Mar - vin Gaye and get it on. You got the heal - ing that I want.

Eb Instr.

Piano Combo  
E No band: play small notes E C#m  
Rock Organ

Synthesizer  
8<sup>th</sup>

Guitar  
Jazz Guitar

Bass Guitar  
Acoustic Bass

Drums  
Tambourine

Percussion  
Hand clap

© www.ChorusOnline.com / 0031 (0) 6 - 41 57 77 56



C

16

S dooh Woah oh - oh - oh oh oh there's love, ba -

A dooh Woah oh - oh - oh oh oh there's love, ba -

T kar - ma su - tra show and tell. Yeah. Woah oh - oh - oh there's lov - ing in your eyes that

B kar - ma su - tra show and tell. Yeah. Woah oh - oh - oh there's lov - ing in your eyes that

P.C. B E G#7

Synth

Gtr. Light Strumming

Bass

Dr.

Perc.

21

S dooh ooh that pulls me clo - ser it's so sub - tle I'm in trou - ble

A dooh ooh that pulls me clo - ser it's so sub - tle I'm in trou - ble

T pulls me clo - ser it's so sub - tle I'm in trou - ble But I'd love to be in trou - ble with you.

B pulls me clo - ser it's so sub - tle I'm in trou - ble But I'd love to be in trou - ble with you.

Eb C#m F# F#m

P.C.

Synth

Gtr.

Bass

Dr.

Perc.

36

S I'm scream-ing mer - cy mer - cy please. Just like they say it in the song, un - til the dawn. Let's Mar - vin Gaye and get it on.

A Hey! Woah oh - oh - oh oh Hey! Woah oh - oh - oh oh Hey!

T I'm scream-ing mer - cy mer - cy please. Just like they say it in the song, un - til the dawn. Let's Mar - vin Gaye and get it on.

B Hey! Woah oh - oh - oh oh Hey! Woah oh - oh - oh oh Hey!

Eb

P.C. C<sup>#m</sup> A B

Synth

Gtr.

Bass

Dr.

Perc.

41

S And when you leave me all a - lone, I'm like a stray with - out a home.

A Woah oh - oh - oh oh And when you leave me all a - lone, I'm like a stray with - out a home.

T ooh ooh

B Woah oh - oh - oh oh ooh ooh

Eb E B<sup>aug</sup> let ring

P.C.

Synth muted

Gtr.

Bass

Dr.

Perc.

56

S  
ble But I'd love to be in trou-ble with you. Let's Mar- vin Gaye and get it on. \_

A  
ble But I'd love to be in trou-ble with you. Let's Mar- vin Gaye and get it on. \_

T  
I'm in trou- ble Let's Mar- vin Gaye and get it on. \_ You got the heal- ing that I

B  
I'm in trou- ble Let's Mar- vin Gaye and get it on. \_ You got the heal- ing that I

Eb

P.C.  
F#m7 B E

Synth

Gtr. *Jazz Guitar*

Bass *Acoustic Bass*

Dr.

Perc. *Hand clap*

61

S  
You got the heal- ing that I want. ba - - - dooh un- til the dawn. \_ ba - - - dooh

A  
You got the heal- ing that I want. ba - - - dooh un- til the dawn. \_ ba - - - dooh

T  
want. \_ Just like they say it in the song, \_ un- til the dawn. \_ Let's Mar- vin Gaye and get it on. \_

B  
want. \_ Just like they say it in the song, \_ un- til the dawn. \_ Let's Mar- vin Gaye and get it on. \_

Eb

P.C.  
C#m A B E

Synth

Gtr.

Bass

Dr. *Rev. Cymbal*

Perc.

Marvin Gaye 9  
SSAATB Combo Eb

76

S I'm scream-ing mer - cy mer - cy please. Just like they say it in the song, un - til the dawn. Let's Mar - vin Gaye and get it on.

A I'm scream-ing mer - cy mer - cy please. Just like they say it in the song, un - til the dawn. Let's Mar - vin Gaye and get it on.

T I'm scream-ing mer - cy mer - cy please. Just like they say it in the song, un - til the dawn. Let's Mar - vin Gaye and get it on.

B I'm scream-ing mer - cy mer - cy please. Just like they say it in the song, un - til the dawn. Let's Mar - vin Gaye and get it on.

Eb

P.C. C<sup>m</sup> A B

Synth

Gtr.

Bass

Dr.

Perc.

81

S Just like they say it in the song, un - til the dawn. Let's Mar - vin Gaye and get it on. ooh.

A oh un - til the dawn. Let's Mar - vin Gaye and get it on. ooh.

T Just like they say it in the song, un - til the dawn. Let's Mar - vin Gaye and get it on. ooh.

B oh un - til the dawn. Let's Mar - vin Gaye and get it on. ooh.

Eb

P.C. E C<sup>m</sup> A B E

Synth

Gtr.

Bass

Dr.

Perc.



13

S dooh ba - dooh ba - dooh ba - dooh Woah oh - oh - oh - oh

A dooh ba - dooh ba - dooh ba - dooh Woah oh - oh - oh - oh

T dooh else... Don't keep your se - crets to your - self... it's kar - ma su - tra show and tell... Woah oh - oh -

B else... Don't keep your se - crets to your - self... it's kar - ma su - tra show and tell... Yeah. Woah oh - oh -

1

2

3

4

P.C. C<sup>F</sup>m A B E

Smith 8 8 8

Chr. 8

Bass

Dr.

Perc.

D

25

S Let's Mar - vin Gaye and get it on. — You got the heal - ing that I want. — Just like they say it in the song,

A Let's Mar - vin Gaye and get it on. — You got the heal - ing that I want. — ba -

T Let's Mar - vin Gaye and get it on. — You got the heal - ing that I want. — Just like they say it in the song,

B love to be in trou - ble with you. Let's Mar - vin Gaye and get it on. — You got the heal - ing that I want. — ba -

1

2

3

4

P.C.  $F^{\#}m$  B E  $C^{\#}m$

Smth

Jazz Guitar

Acoustic Bass

Rock Organ

Dr. Tambourine

Perc. Hand clap

Marvin Gaye 7  
SSAATB 4 extra staves

37

S  
please. \_\_\_\_\_ Just like they say it in the song, \_\_\_\_\_ un - til the dawn. \_\_\_\_\_ Let's Mar - vin Gaye and get it on. \_\_\_\_\_ And when you leave me all a -

A  
Woah oh - oh - oh oh Hey! Woah oh - oh - oh oh Hey! Woah oh - oh - oh oh And when you leave me all a -

T  
please. \_\_\_\_\_ Just like they say it in the song, \_\_\_\_\_ un - til the dawn. \_\_\_\_\_ Let's Mar - vin Gaye and get it on. \_\_\_\_\_

B  
Woah oh - oh - oh oh Hey! Woah oh - oh - oh oh Hey! Woah oh - oh - oh oh

1  
2  
3  
4

C<sub>4</sub>m A B E B<sub>aug</sub>  
letting

P.C.  
Synth  
8 8 8

Gtr.  
8

Bass

Dr.  
8

Perc.

G

40

S I got to have you babe. Woah oh - oh - oh there's lov - ing in your eyes that puls me do - ser - it's so sub -

A I got to have you babe. Woah oh - oh - oh there's lov - ing in your eyes that puls me do - ser - it's so sub -

T Woah oh - oh - oh Woah oh - oh - oh there's love, — ba - dooh coo — that puls me do - ser —

B Woah oh - oh - oh Woah oh - oh - oh there's love, — ba - dooh coo — that puls me do - ser —

1

2

3

4

P.C. G# C#m

Smith

Light Strumming

Gtr.

Bass

Dr.

Perc.

Marvin Gaye 11  
SSAATB 4 extra staves

61

S  
You got the heal - ing that I want  
ba - - - dooh  
un - til the dawn, —  
ba - - - dooh  
Let's Mar - vin Gaye and get it on.

A  
You got the heal - ing that I want  
ba - - - dooh  
un - til the dawn, —  
ba - - - dooh  
Let's Mar - vin Gaye and get it on.

T  
want —  
Just like they say it in the song, —  
un - til the dawn, —  
Let's Mar - vin Gaye and get it on.

B  
want —  
Just like they say it in the song, —  
un - til the dawn, —  
Let's Mar - vin Gaye and get it on.

1  
2  
3  
4

P.C.  
C<sup>m</sup>  
A  
B  
E

Strings

Strings

Strn

Chr.

Bass

Dr.

Perc.

Key: Cymbal

Marvin Gaye 13  
SSAATB 4 extra staves

J

74

S You've got to give it up to me \_\_\_\_\_ I'm scream-ing mer - cy mer - cy please. \_\_\_\_\_ Just like they say it in the song, \_\_\_\_\_ un - til the dawn. \_\_\_\_\_ Let's Mar - vin Gaye and get it on.

A You've got to give it up to me \_\_\_\_\_ I'm scream-ing mer - cy mer - cy please. \_\_\_\_\_ Just like they say it in the song, \_\_\_\_\_ un - til the dawn. \_\_\_\_\_ Let's Mar - vin Gaye and get it on.

T You've got to give it up to me \_\_\_\_\_ I'm scream-ing mer - cy mer - cy please. \_\_\_\_\_ Just like they say it in the song, \_\_\_\_\_ un - til the dawn. \_\_\_\_\_ Let's Mar - vin Gaye and get it on.

B You've got to give it up to me \_\_\_\_\_ I'm scream-ing mer - cy mer - cy please. \_\_\_\_\_ Just like they say it in the song, \_\_\_\_\_ un - til the dawn. \_\_\_\_\_ Let's Mar - vin Gaye and get it on.

1 \_\_\_\_\_

2 \_\_\_\_\_

3 \_\_\_\_\_

4 \_\_\_\_\_

Baug E C#m A B

P.C. (8<sup>va</sup>)

Smith

Gtr.

Bass

Dr.

Perc.



SSAATB small Combo

# Marvin Gaye

- Charlie Puth ft. Meghan Trainor -

Words and Music by Charlie Puth, Julie Frost, Jacob Luttrell, Nick Seeley  
Arranged by Frank de Vreeze  
Original Key

DEMO

VERSE

Doo-Wop - Soul ♩ = 110

A

Soprano

Alto

Tenor

Bass

Piano Combo

Guitar

Bass Guitar

Drums

Percussion

Let's Mar - vin Gaye and get it on. You got the heal - ing that I

Let's Mar - vin Gaye and get it on. You got the heal - ing that I

*No band: play small notes*

*Jazz Guitar*

*Acoustic Bass*

*Tambourine*

*Hand clap*

*small notes optional*

© www.ChorusOnline.com / 0031 (0) 6 - 41 57 77 56



13

S dooh ba - dooh ba - ba - dooh ba - dooh

A dooh ba - dooh ba - ba - dooh ba - dooh

T else. Don't keep your se - crets to your - self, it's kar - ma su - tra show and tell.

B else. Don't keep your se - crets to your - self, it's kar - ma su - tra show and tell.

P.C.

Gtr.

Bass

Dr.

Perc.

17

S Woah oh - oh - oh oh oh there's love, ba -

A Woah oh - oh - oh oh oh there's love, ba -

T Yeah. Woah oh - oh - oh there's lov - ing in your eyes that  
small notes optional

B Yeah. Woah oh - oh - oh there's lov - ing in your eyes that

P.C.

Gtr. Light Strumming

Bass

Dr.

Perc.

29

S want. Just like they say it in the song, un - til the dawn. Let's Mar - vin Gaye and get it on.

A You got the heal - ing that I want. ba - - dooh un - til the dawn.

T want. Just like they say it in the song, un - til the dawn. Let's Mar - vin Gaye and get it on.

B You got the heal - ing that I want. ba - - dooh un - til the dawn.

P.C. *C<sub>m</sub>* You got the heal - ing that I want. *A* ba - - dooh *B* un - til the dawn.

Gtr.

Bass

Dr.

Perc.

33

S You've got to give it up to me. I'm scream - ing mer - cy mer - cy

A Let's Mar - vin Gaye and get it on. Woah oh - oh - oh oh Hey!

T You've got to give it up to me. I'm scream - ing mer - cy mer - cy

B Let's Mar - vin Gaye and get it on. *B<sub>aug</sub>* Woah oh - oh - oh oh Hey!

P.C. *E* *B<sub>aug</sub>* let ring *E*

Gtr.

Bass

Dr. *Rev. Cymbal*

Perc.

45

S home. I'm like a dog with - out a bone. I just want you for my own.

A home. I'm like a dog with - out a bone. I just want you for my own.

T ooh ba - ba - dooh ba - dooh

B ooh ba - ba - dooh ba - dooh

P.C.

Gtr.

Bass

Dr.

Perc.

G

49

S I got to have you babe. Woah oh - oh - oh there's lov - ing in your eyes\_ that

A I got to have you babe. Woah oh - oh - oh there's lov - ing in your eyes\_ that

T Woah oh - oh - oh oh Woah oh - oh - oh there's love, ba -

B Woah oh - oh - oh oh Woah oh - oh - oh there's love, ba -

P.C.

Gtr. Light Strumming

Bass

Dr.

Perc.

61

S  
You got the heal-ing that I want. ba - - dooh un-til the\_ dawn. ba -

A  
You got the heal-ing that I want. ba - - dooh un-til the\_ dawn. ba -

T  
want. Just like they say it in the song, un-til the\_ dawn. Let's Mar - vin Gaye and get it on.

B  
want. Just like they say it in the song, un-til the\_ dawn. Let's Mar - vin Gaye and get it on.

P.C.  
C A B

Gtr.  
Bass  
Dr.  
Perc.

I

65

S  
dooh Let's Mar - vin Gaye and get it on. You got the heal - ing that I

A  
dooh Let's Mar - vin Gaye and get it on. You got the heal - ing that I

T  
Let's Mar - vin Gaye and get it on. You got the heal - ing that I

B  
Let's Mar - vin Gaye and get it on. You got the heal - ing that I

P.C.  
E E

Gtr.  
Jazz Guitar

Bass

Dr.  
Rev. Cymbal

Perc.  
Cow bell

78

S Just like they say it in the song, un-til the dawn. Let's Mar- vin Gaye and get it on.

A Just like they say it in the song, un-til the dawn. Let's Mar- vin Gaye and get it on. oh.

T Just like they say it in the song, un-til the dawn. Let's Mar- vin Gaye and get it on.

B Just like they say it in the song, un-til the dawn. Let's Mar- vin Gaye and get it on. oh.

P.C. **A** **B** **E**

Gtr.

Bass

Dr.

Perc.

82

S Just like they say it in the song, un-til the dawn. Let's Mar- vin Gaye and get it on. ooh.

A un-til the dawn. Let's Mar- vin Gaye and get it on. ooh.

T Just like they say it in the song, un-til the dawn. Let's Mar- vin Gaye and get it on. ooh.

B un-til the dawn. Let's Mar- vin Gaye and get it on. ooh.

P.C. **C#m** **A** **B** **E**

Gtr.

Bass

Dr.

Perc.

SSAATB small Combo extra staves

**Marvin Gaye**

- Charlie Puth ft. Meghan Trainor -

*Words and Music by Charlie Puth, Julie Frost, Jacob Luttrell, Nick Seeley  
Arranged by Frank de Vreeze  
Original Key*

Doo-Wop - Soul ♩ = 110

A

Soprano  
Alto  
Tenor  
Bass

small notes optional

Lets Mar - vin Gaye and get it on, —  
You got the heal - ing that I want, —  
Just like they say it in the song,

Lets Mar - vin Gaye and get it on, —  
You got the heal - ing that I want, —  
Just like they say it in the song,

ba - - -  
ba - - -

1  
2

E No band: play small notes E C<sub>4</sub>m

Piano Combo  
Jazz Guitar  
Acoustic Bass  
Tambourine  
Drums  
Hand clap  
Percussion

13

S dooh ba - dooh ba - ba - dooh ba - dooh  
 dooh oh - oh - oh oh  
 A dooh ba - dooh ba - ba - dooh ba - dooh  
 dooh oh - oh - oh oh  
 T dooh ba - dooh ba - ba - dooh ba - dooh  
 dooh oh - oh - oh oh  
 B else. — Don't keep your se - crets to your - self, it's kar - ma su - tra show and tell. — Yeah. Woah oh - oh -  
 else. — Don't keep your se - crets to your - self, it's kar - ma su - tra show and tell. — Yeah. Woah oh - oh -

1  
 2

G#m A B E

P.C.  
 Gtr.  
 Bass  
 Dr.  
 Perc.

**D**

25

S Let's Mar-vin Gaye and get it on. — You got the heal-ling that I want. — Just like they say it in the song,

A Let's Mar-vin Gaye and get it on. — You got the heal-ling that I want. — ba -

T *small notes optional*  
love to be in trou-ble with you. Let's Mar-vin Gaye and get it on. — You got the heal-ling that I want. — Just like they say it in the song,

B love to be in trou-ble with you. Let's Mar-vin Gaye and get it on. — You got the heal-ling that I want. — ba -

1  
2

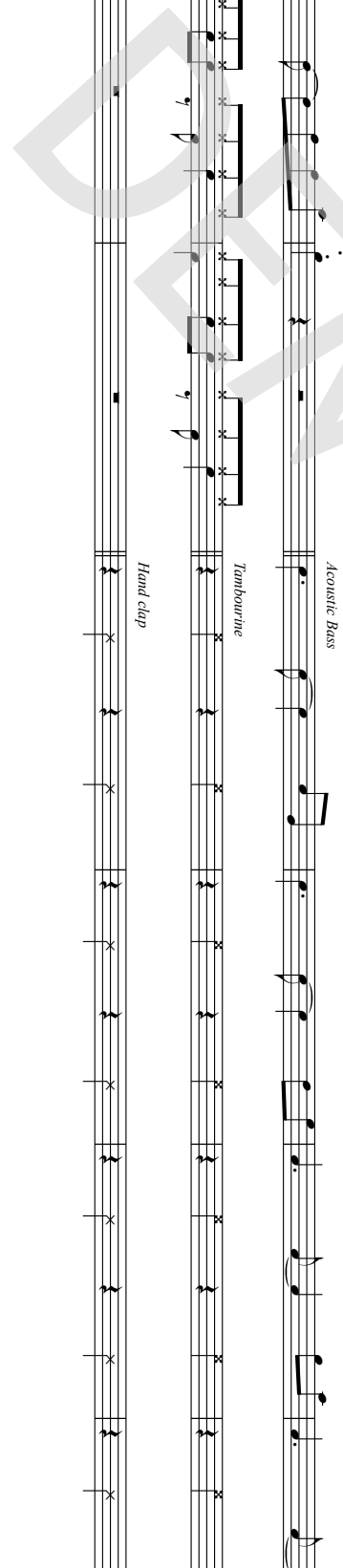
PC: *F#m* *B* *E* *G#m*

Gtr. *Jazz Guitar*

Bass *Acoustic Bass*

Dr. *Tambourine*

Perc. *Hand clap*



37

S please. \_\_\_\_\_ Just like they say it in the song, \_\_\_\_\_ un - til the dawn. \_\_\_\_\_ Let's Mar - vin Gaye and get it on. \_\_\_\_\_ And when you leave me all a -

A please. \_\_\_\_\_ Just like they say it in the song, \_\_\_\_\_ un - til the dawn. \_\_\_\_\_ Let's Mar - vin Gaye and get it on. \_\_\_\_\_ And when you leave me all a -

T please. \_\_\_\_\_ Just like they say it in the song, \_\_\_\_\_ un - til the dawn. \_\_\_\_\_ Let's Mar - vin Gaye and get it on. \_\_\_\_\_ And when you leave me all a -

B please. \_\_\_\_\_ Just like they say it in the song, \_\_\_\_\_ un - til the dawn. \_\_\_\_\_ Let's Mar - vin Gaye and get it on. \_\_\_\_\_ And when you leave me all a -

1

2

Gtr.  $G\#m$  A B E  $B\ aug$  *let ring*

Bass

Dr.

Perc.

G

49

S — I got to have you babe. Woah oh - oh - oh there's lov - ing in your eyes that pulls me do - ser — it's so sub -  
 A — I got to have you babe. Woah oh - oh - oh there's lov - ing in your eyes that pulls me do - ser — it's so sub -  
 T — Woah oh - oh - oh Woah oh - oh - oh there's lov - ing in your eyes that pulls me do - ser — ooh — that pulls me do - ser —  
 B — Woah oh - oh - oh Woah oh - oh - oh there's love, — ba - dooh ooh — that pulls me do - ser —  
 1  
 2

G#  
 G#m

P.C.  
 Light Strumming

Gtr.  
 Bass  
 Dr.  
 Perc.

Marvin Gaye 11  
SSAATB small Combo extra staves

61

S You got the heal-ing that I want. ba - dooh un - til the dawn. — ba - dooh

A You got the heal-ing that I want. un - til the dawn. — ba - dooh

T want. — Just like they say it in the song. — un - til the dawn. — Let's Mar - vin Gaye and get it on. —

B want. — Just like they say it in the song. — un - til the dawn. — Let's Mar - vin Gaye and get it on. — Let's Mar - vin Gaye and get it on. —

1

2

Gtr. *Gtr<sup>m</sup>*

P.C. *A B E*

Bass

Dr. *Rev. Cymbal*

Perc.

J

74

S You've got to give it up to me \_\_\_\_\_ I'm scream-ing mer - cy mer - cy please. \_\_\_\_\_ Just like they say it in the song, \_\_\_\_\_ un - til the dawn.

A You've got to give it up to me \_\_\_\_\_ I'm scream-ing mer - cy mer - cy please. \_\_\_\_\_ Just like they say it in the song, \_\_\_\_\_ un - til the dawn.

T You've got to give it up to me \_\_\_\_\_ I'm scream-ing mer - cy mer - cy please. \_\_\_\_\_ Just like they say it in the song, \_\_\_\_\_ un - til the dawn.

B You've got to give it up to me \_\_\_\_\_ I'm scream-ing mer - cy mer - cy please. \_\_\_\_\_ Just like they say it in the song, \_\_\_\_\_ un - til the dawn.

1  
2

P.C. B aug E G#m A

Gtr.  
Bass  
Dr.  
Perc.



SSAATB Piano Solo Advanced

# Marvin Gaye

- Charlie Puth ft. Meghan Trainor -

Words and Music by *Charlie Puth, Julie Frost, Jacob Luttrell, Nick Seeley*  
Arranged by *Frank de Vreeze*  
Original Key

DEMO

VERSION

**Doo-Wop - Soul** ♩ = 110

**A**

Soprano

Alto

Tenor

Bass

small notes optional

Let's Mar-vin Gaye and get it on. \_\_\_ You got the heal-ing that I want. \_\_\_

E E C#m

Piano Solo Advanced

© www.ChorusOnline.com / 0031 (0) 6 - 41 57 77 56



14

S dooh ba - ba - dooh ba - dooh Woah oh-oh-oh oh

A dooh ba - ba - dooh ba - dooh Woah oh-oh-oh oh

T Don't keep your se-crets to your - self, \_\_\_\_\_ it's kar-ma su-tra show and tell. \_\_\_\_\_ Yeah. Woah oh-oh-

B Don't keep your se-crets to your - self, \_\_\_\_\_ it's kar-ma su-tra show and tell. \_\_\_\_\_ Yeah. Woah oh-oh-

P.S.A. **A** **B** **E**

**C**

19

S oh there's love, \_\_\_\_\_ ba - dooh ooh that pulls me clo - ser \_\_\_\_\_

A oh there's love, \_\_\_\_\_ ba - dooh ooh that pulls me clo - ser \_\_\_\_\_

T small notes optional  
oh there's lov - ing in your eyes that pulls me clo - ser \_\_\_\_\_ it's so sub -

B oh there's lov - ing in your eyes that pulls me clo - ser \_\_\_\_\_ it's so sub -

P.S.A. **G<sup>7</sup>** **C<sup>#m</sup>**

31

S  
un - til the\_\_ dawn.\_\_ Let's Mar - vin Gaye and get it on.\_\_ You've got to give it up to

A  
dooh un - til the\_\_ dawn.\_\_ Let's Mar - vin Gaye and get it on.\_\_

T  
un - til the\_\_ dawn.\_\_ Let's Mar - vin Gaye and get it on.\_\_ You've got to give it up to

B  
dooh un - til the\_\_ dawn.\_\_ Let's Mar - vin Gaye and get it on.\_\_

P.S.A.  
A B E B<sup>aug</sup> let ring

E

35

S  
me \_\_\_\_\_ I'm scream - ing mer - cy mer - cy please. \_\_\_\_\_ Just like they say it in the song,

A  
Woah oh - oh - oh oh Hey! Woah oh - oh - oh oh Hey!

T  
me \_\_\_\_\_ I'm scream - ing mer - cy mer - cy please. \_\_\_\_\_ Just like they say it in the song,

B  
Woah oh - oh - oh oh Hey! Woah oh - oh - oh oh Hey!

P.S.A.  
E C<sup>#m</sup>

G

48

S  
I just want you for my own. I got to have you babe. Woah oh-oh - oh there's lov - ing in your eyes that

A  
I just want you for my own. I got to have you babe. Woah oh-oh - oh there's lov - ing in your eyes that

T  
dooh Woah oh-oh-oh oh Woah oh-oh - oh there's love, ba -

B  
dooh Woah oh-oh-oh oh Woah oh-oh - oh there's love, ba -

P.S.A.

G#

53

S  
pulls me clo - ser it's so sub - tle I'm in trou - ble But I'd love to be in trou-ble with

A  
pulls me clo - ser it's so sub - tle I'm in trou - ble But I'd love to be in trou-ble with

T  
dooh ooh\_ that pulls me clo - ser it's so sub - tle I'm in trou - ble

B  
dooh ooh\_ that pulls me clo - ser it's so sub - tle I'm in trou - ble

P.S.A.

C#m F# F#m7

I

66

S  
Let's Mar - vin Gaye and get it on. \_\_\_\_\_ You got the heal - ing that I want. \_\_\_\_

A  
Let's Mar - vin Gaye and get it on. \_\_\_\_ You got the heal - ing that I want. \_\_\_\_

T  
Let's Mar - vin Gaye and get it on. \_\_\_\_\_ You got the heal - ing that I want. \_\_\_\_

B  
Let's Mar - vin Gaye and get it on. \_\_\_\_ You got the heal - ing that I want. \_\_\_\_

P.S.A.

E C#m

70

S  
Just like they say it in the song, \_\_\_\_ un - til the dawn. \_\_\_\_ Let's Mar - vin Gaye and get it on. \_\_\_\_ babe

A  
Just like they say it in the song, \_\_\_\_ un - til the dawn. \_\_\_\_ Let's Mar - vin Gaye and get it on. \_\_\_\_ babe

T  
Just like they say it in the song, \_\_\_\_ un - til the dawn. \_\_\_\_ Let's Mar - vin Gaye and get it on. \_\_\_\_ babe

B  
Just like they say it in the song, \_\_\_\_ un - til the dawn. \_\_\_\_ Let's Mar - vin Gaye and get it on. \_\_\_\_ babe

P.S.A.

A B E

82

S Just like they say it in the song, un-til the dawn. Let's Mar-vin Gaye and get it on. ooh.

A un-til the dawn. Let's Mar-vin Gaye and get it on. ooh.

T Just like they say it in the song, un-til the dawn. Let's Mar-vin Gaye and get it on. ooh.

B un-til the dawn. Let's Mar-vin Gaye and get it on. ooh.

P.S.A. C<sup>#</sup>m A B E



SSAATB Piano Solo Intermediate

# Marvin Gaye

- Charlie Puth ft. Meghan Trainor -

Words and Music by *Charlie Puth, Julie Frost, Jacob Luttrell, Nick Seeley*  
Arranged by *Frank de Vreeze*  
Original Key

DEMO

VERSION

**Doo-Wop - Soul** ♩ = 110

**A**

Soprano

Alto

Tenor

Bass

Piano Solo Intermediate

small notes optional

Let's Mar-vin Gaye and get it on. \_\_\_ You got the heal-ing that I want. \_\_\_

E E C#m

© www.ChorusOnline.com / 0031 (0) 6 - 41 57 77 56



14

S dooh ba - ba - dooh ba - dooh Woah oh-oh-oh oh

A dooh ba - ba - dooh ba - dooh Woah oh-oh-oh oh

T Don't keep your se-crets to your - self, \_\_\_\_\_ it's kar-ma su-tra show and tell. \_\_\_\_\_ Yeah. Woah oh-oh-

B Don't keep your se-crets to your - self, \_\_\_\_\_ it's kar-ma su-tra show and tell. \_\_\_\_\_ Yeah. Woah oh-oh-

P.S.I. A B E

19

S oh there's love, \_\_\_\_\_ ba - dooh ooh that pulls me clo - ser \_\_\_\_\_

A oh there's love, \_\_\_\_\_ ba - dooh ooh that pulls me clo - ser \_\_\_\_\_

T small notes optional  
oh there's lov - ing in your eyes that pulls me clo - ser \_\_\_\_\_ it's so sub -

B oh there's lov - ing in your eyes that pulls me clo - ser \_\_\_\_\_ it's so sub -

P.S.I. G<sup>7</sup> C<sup>#m</sup>

Marvin Gaye 5  
SSAATB Piano Solo Intermediate

31

S  
un - til the\_\_ dawn.\_\_ Let's Mar - vin Gaye and get it on.\_\_ You've got to give it up to

A  
dooh un - til the\_\_ dawn.\_\_ Let's Mar - vin Gaye and get it on.\_\_

T  
un - til the\_\_ dawn.\_\_ Let's Mar - vin Gaye and get it on.\_\_ You've got to give it up to

B  
dooh un - til the\_\_ dawn.\_\_ Let's Mar - vin Gaye and get it on.\_\_

P.S.I.  
A B E B<sup>aug</sup> let ring

35

S  
me I'm scream - ing mer - cy mer - cy please.\_\_ Just like they say it in the song,

A  
Woah oh - oh - oh oh Hey! Woah oh - oh - oh oh Hey!

T  
me I'm scream - ing mer - cy mer - cy please.\_\_ Just like they say it in the song,

B  
Woah oh - oh - oh oh Hey! Woah oh - oh - oh oh Hey!

P.S.I.  
E C#<sup>m</sup>

G

48

S  
I just want you for my own. I got to have you babe. Woah oh - oh - oh there's lov -

A  
I just want you for my own. I got to have you babe. Woah oh - oh - oh there's lov -

T  
dooh Woah oh - oh - oh oh Woah oh - oh - oh there's love,

B  
dooh Woah oh - oh - oh oh Woah oh - oh - oh there's love,

P.S.I.  
G#7

52

S  
- ing in your eyes that pulls me clo - ser - it's so sub - tle I'm in trou - ble But I'd

A  
- ing in your eyes that pulls me clo - ser - it's so sub - tle I'm in trou - ble But I'd

T  
ba - dooh ooh - that pulls me clo - ser it's so sub - tle I'm in trou - ble

B  
ba - dooh ooh - that pulls me clo - ser it's so sub - tle I'm in trou - ble

P.S.I.  
C#m F#

I

65

S dooh Let's Mar-vin Gaye and get it on. \_\_\_\_\_ You got the heal-ing that I want. \_\_\_\_

A dooh Let's Mar-vin Gaye and get it on. \_\_\_\_\_ You got the heal-ing that I want. \_\_\_\_

T — Let's Mar-vin Gaye and get it on. \_\_\_\_\_ You got the heal-ing that I want. \_\_\_\_

B — Let's Mar-vin Gaye and get it on. \_\_\_\_\_ You got the heal-ing that I want. \_\_\_\_

P.S.I. E E C#m

70

S Just like they say it in the song, \_\_\_\_\_ un - til the dawn. \_\_\_\_\_ Let's Mar - vin Gaye and get it on. \_\_\_\_\_ babe

A Just like they say it in the song, \_\_\_\_\_ un - til the dawn. \_\_\_\_\_ Let's Mar - vin Gaye and get it on. \_\_\_\_\_ babe

T 8 Just like they say it in the song, \_\_\_\_\_ un - til the dawn. \_\_\_\_\_ Let's Mar - vin Gaye and get it on. \_\_\_\_\_ babe

B Just like they say it in the song, \_\_\_\_\_ un - til the dawn. \_\_\_\_\_ Let's Mar - vin Gaye and get it on. \_\_\_\_\_ babe

P.S.I. A B E

82

S  
Just like they say it in the song, un-til the dawn. Let's Mar-vin Gaye and get it on. ooh.

A  
un-til the dawn. Let's Mar-vin Gaye and get it on. ooh.

T  
Just like they say it in the song, un-til the dawn. Let's Mar-vin Gaye and get it on. ooh.

B  
un-til the dawn. Let's Mar-vin Gaye and get it on. ooh.

P.S.I.  
A B E

# Marvin Gaye

- Charlie Puth ft. Meghan Trainor -

Words and Music by *Charlie Puth, Julie Frost, Jacob Luttrell, Nick Seeley*  
Arranged by *Frank de Vreeze*  
Original Key

Doo-Wop - Soul ♩ = 110

**A**

Soprano

Alto

Tenor

Bass

small notes optional

Let's Mar-vin Gaye and get it on. You got the heal-ing that I

Let's Mar-vin Gaye and get it on. You got the heal-ing that I

5

S

A

T

B

ba - - dooh un - til the\_\_ dawn.

ba - - dooh un - til the\_\_ dawn.

want. Just like they say it in the song, un - til the\_\_ dawn.

want. Just like they say it in the song, un - til the\_\_ dawn.

20

S  
ba - dooh ooh\_\_ that pulls me clo - ser\_\_ it's so sub - tle

A  
ba - dooh ooh\_\_ that pulls me clo - ser\_\_ it's so sub - tle

T  
8  
- ing in your eyes that pulls me clo - ser\_\_ it's so sub - tle I'm in trou -

B  
- ing in your eyes that pulls me clo - ser\_\_ it's so sub - tle I'm in trou -

24

S  
I'm in trou - ble Let's Mar - vin Gaye and get it on.

A  
I'm in trou - ble

T  
8  
- ble But I'd\_\_ love to be in trou - ble with you. Let's Mar - vin Gaye and get it on.  
small notes optional

B  
- ble But I'd\_\_ love to be in trou - ble with you.

**D**

27

S  
You got the heal - ing that I want. \_\_

A  
Let's Mar - vin Gaye and get it on. \_\_ You got the heal - ing that I

T  
8  
You got the heal - ing that I want. \_\_

B  
Let's Mar - vin Gaye and get it on. \_\_ You got the heal - ing that I

39

S un - til the dawn. \_\_\_ Let's Mar - vin Gaye and get it on. \_\_\_

A Woah oh - oh - oh oh Hey! Woah oh - oh - oh oh

T un - til the dawn. \_\_\_ Let's Mar - vin Gaye and get it on. \_\_\_

B Woah oh - oh - oh oh Hey! Woah oh - oh - oh oh

F

42

S And when you leave me all a - lone, \_\_\_ I'm like a stray with-out a home. \_\_\_

A And when you leave me all a - lone, I'm like a stray with-out a home.

T ooh \_\_\_ ooh \_\_\_

B ooh \_\_\_ ooh \_\_\_

46

S I'm like a dog with-out a bone. \_\_\_ I just want you for my own. \_\_\_ I got to

A I'm like a dog with-out a bone. I just want you for my own. \_\_\_ I got to

T ba - ba - dooh ba - dooh Woah oh - oh - oh oh

B ba - ba - dooh ba - dooh Woah oh - oh - oh oh

61

S You got the heal-ing that I want. ba - dooh un-til the\_\_ dawn.

A You got the heal-ing that I want. ba - dooh un-til the\_\_ dawn.

T want. Just like they say it in the song, un-til the\_\_ dawn.

B want. Just like they say it in the song, un-til the\_\_ dawn.

I

64

S — ba - dooh Let's Mar-vin Gaye and get it on. —

A — ba - dooh Let's Mar-vin Gaye and get it on. —

T — Let's Mar-vin Gaye and get it on. — Let's Mar-vin Gaye and get it on. —

B — Let's Mar-vin Gaye and get it on. — Let's Mar-vin Gaye and get it on. —

68

S You got the heal-ing that I want. Just like they say it in the song, un-til the dawn.

A You got the heal-ing that I want. Just like they say it in the song, un-til the dawn.

T You got the heal-ing that I want. Just like they say it in the song, un-til the dawn.

B You got the heal-ing that I want. Just like they say it in the song, un-til the dawn.

Marvin Gaye 9  
SSAATB

81

S — Just like they say it in the song, — un - til the dawn.

A — oh — un - til the dawn.

T — Just like they say it in the song, — un - til the dawn.

B — oh — un - til the dawn.

84

S — Let's Mar - vin Gaye and get it on. — ooh.

A — Let's Mar - vin Gaye and get it on. — ooh.

T — Let's Mar - vin Gaye and get it on. — ooh.

B — Let's Mar - vin Gaye and get it on. — ooh.

# Marvin Gaye

- Charlie Puth ft. Meghan Trainor -

Words and Music by Charlie Puth, Julie Frost, Jacob Luttrell, Nick Seeley

Arranged by Frank de Vreeze

Original Key

Doo-Wop - Soul ♩ = 110

A

C Instr.

B

8

C

14

20

D

26

E

32

F

38

G

45

52

# Marvin Gaye

- Charlie Puth ft. Meghan Trainor

Words and Music by *Charlie Puth, Julie Frost, Jacob Luttrell, Nick Seeley*  
Arranged by *Frank de Vreeze*  
Original Key

Doo-Wop - Soul ♩ = 110

A

Bb Instr.



B



C



D



E



F



G



# Marvin Gaye

- Charlie Puth ft. Meghan Trainor -

Words and Music by *Charlie Puth, Julie Frost, Jacob Luttrell, Nick Seeley*  
Arranged by *Frank de Vreeze*  
Original Key

Doo-Wop - Soul ♩ = 110

**A**

E♭ Instr.

**B**

**C**

**D**

**E**

**F**

**G**

# Marvin Gaye

- Charlie Puth ft. Meghan Trainor -

Words and Music by *Charlie Puth, Julie Frost, Jacob Luttrell, Nick Seeley*  
Arranged by *Frank de Vreeze*  
Original Key

Doo-Wop - Soul ♩ = 110

**A**

E *No band: play small notes*

E

C#m

**A**

**B**

E

B<sup>aug</sup>

**B**

E

*let ring*

C#m

**A**

**B**

**E**

**C**

G#7

C#m

F#

F#m

**B**

**D**

E

# Marvin Gaye

- Charlie Puth ft. Meghan Trainor

Words and Music by Charlie Puth, Julie Frost, Jacob Luttrell, Nick Seeley  
Arranged by Frank de Vreeze  
Original Key

Doo-Wop - Soul ♩ = 110

The piano score is written in G major (one sharp) and 4/4 time. It consists of 23 measures. The tempo is marked as 'Doo-Wop - Soul' with a quarter note equal to 110 beats per minute. The score is divided into sections A, B, and D. Chords are indicated above the staff. A 'let ring' instruction is present in measure 10. The score is divided into sections A, B, and D.

Measures 1-5: Section A, Chords: E, E, C#m

Measures 6-11: Section B, Chords: A, B, E, B aug, B, E

Measures 12-17: Section C, Chords: C#m, A, B, E

Measures 18-22: Section D, Chords: G#7, C#m, F#, F#m, B, D

Measure 23: Chord: E



Piano Solo Intermediate

# Marvin Gaye

- Charlie Puth ft. Meghan Trainor -

Words and Music by *Charlie Puth, Julie Frost, Jacob Luttrell, Nick Seeley*  
Arranged by *Frank de Vreeze*  
Original Key

Doo-Wop - Soul ♩ = 110

**A**

E

E

C#m

A

B

E

B<sup>aug</sup>

**B**

E

let ring

C#m

A

B

E

**C**

G#7

C#m

F#

F#m

B

**D**

E



# Marvin Gaye

- Charlie Puth ft. Meghan Trainor

Words and Music by *Charlie Puth, Julie Frost, Jacob Luttrell, Nick Seeley*  
Arranged by *Frank de Vreeze*  
Original Key

Doo-Wop - Soul ♩ = 110

**A**

Rock Organ

**B**

**C**

**D**

Rock Organ

**E**

# Marvin Gaye

- Charlie Puth ft. Meghan Trainor -

Words and Music by *Charlie Puth, Julie Frost, Jacob Luttrell, Nick Seeley*  
Arranged by *Frank de Vreeze*  
Original Key

Doo-Wop - Soul ♩ = 110

**A**

Guitar

Jazz. Guitar

6

A B E B<sup>aug</sup> E

12

C<sup>#m</sup> A B E

18

C G<sup>#7</sup> C<sup>#m</sup> F<sup>#</sup>

Light Strumming

24

F<sup>#m</sup> B E C<sup>#m</sup>

**D**

30

A B E B<sup>aug</sup> E

36

C<sup>#m</sup> A B E

# Marvin Gaye

- Charlie Puth ft. Meghan Trainor

Words and Music by Charlie Puth, Julie Frost, Jacob Luttrell, Nick Seeley  
Arranged by Frank de Vreeze  
Original Key

Doo-Wop - Soul ♩ = 110

**A**

E E C#m  
*Acoustic Bass*

Bass Guitar

6

A B E B<sup>aug</sup> E **B**

12

C#m A B E

18

**C** G#7 C#m F#

24

F#m B **D** E C#m  
*Acoustic Bass*

30

A B E B<sup>aug</sup> E **E**

36

C#m A B E

# Drumkit/Percussion

Hi-Hat closed  
Hi-Hat open  
High Tom  
Mid Tom  
Low Tom  
Floor Tom  
Ride Cymbal  
Ride Bell/Cup  
Crash Cymbal  
Splash Cymbal  
Triangle mute  
Bassdrum (Kick)  
Shareclick  
Sharedrum  
Hi-Hat Foot  
Tambourine Beating  
Triangle open

- Shaker (eggs)
- Claves
- High Timbale
- Sleigh Bells
- Bell Tree
- Maracas
- Wind Chimes

Handclap  
Guiro  
Woodblock High  
Timbale Low  
Agogo High  
Cowbell  
Conga Cabasa  
Woodblock Low  
Agogo Low

# Marvin Gaye

- Charlie Puth ft. Meghan Trainor -

Words and Music by *Charlie Puth, Julie Frost, Jacob Luttrell, Nick Seeley*  
Arranged by *Frank de Vreeze*  
Original Key

Doo-Wop - Soul ♩ = 110

**A**

*Tambourine*

Drums

**B**

7

*Rev. Cymbal*

13

**C**

19

**D**

25

*Tambourine*

**E**

32

*Rev. Cymbal*

**F**

38

# Drumkit/Percussion

High Tom  
Hi-Hat closed  
Hi-Hat open  
Mid Tom  
Low Tom  
Ride Cymbal  
Crash Cymbal  
Shareclick  
Bassdrum (Kick)  
Sharedrum  
Hi-Hat Foot  
Floor Tom  
Ride Bell/Cup  
Splash Cymbal  
Triangle mute  
Tambourine Beating  
Triangle open

Shaker (eggs)  
Claves  
High Timbale  
Sleigh Bells  
Bell Tree  
Maracas  
Wind Chimes  
Handclap  
Güiro  
Woodblock High  
Timbale Low  
Agogo High  
Cowbell  
Conga  
Cabasa  
Woodblock Low  
Agogo Low

# Marvin Gaye

- Charlie Puth ft. Meghan Trainor

Words and Music by *Charlie Puth, Julie Frost, Jacob Luttrell, Nick Seeley*  
Arranged by *Frank de Vreeze*  
Original Key

Doo-Wop - Soul ♩ = 110

**A**

*Hand clap*

Percussion

**B**

**C**

**D**

7

8

8

*Hand clap*

28

**E**

**F**

**G**

**H**

35

8

8

8

*Hand clap*

**I**

63

*Cow bell*

**J**

72

79

# Marvin Gaye

- Charlie Puth ft. Meghan Trainor -

Words and Music by *Charlie Puth, Julie Frost, Jacob Luttrell, Nick Seeley*  
Arranged by *Frank de Vreeze*  
Original Key

Doo-Wop - Soul ♩ = 110

**A**

E E

Let's Mar-vin Gaye and get it on. \_\_\_\_

You got the heal-ing that I

5 C#m A B

want. \_\_\_\_ Just like they say it in the song, \_\_\_\_ un-til the dawn. \_\_\_\_ Let's Mar-vin Gaye and get it on.

**B**

9 E B aug E

\_\_\_\_ We got this king size to our - selves. \_\_\_\_ Don't have to share with no one

13 C#m A B

else. \_\_\_\_ Don't keep your se - crets to your - self, \_\_\_\_ it's kar - ma su - tra show and tell.

**C**

17 E G# C#m

\_\_\_\_ Yeah. Woah oh - oh - oh there's lov - ing in your eyes that pulls me clo - ser

22 F# F#m

it's so sub - tle I'm in trou - ble But I'd love to be in trou - ble with you.

# Marvin Gaye

- Charlie Puth ft. Meghan Trainor -

*Words and Music by Charlie Puth, Julie Frost, Jacob Luttrell, Nick Seeley  
Arranged by Frank de Vreeze  
Original Key*

A:  
Let's Marvin Gaye and get it on  
You got the healing that I want  
Just like they say it in the song  
Until the dawn Let's Marvin Gaye and get it on

B:  
We got this king size to ourselves  
Don't have to share with no one else  
Don't keep your secrets to yourself  
It's karma sutra show and tell  
Yeah

C:  
Woah There's loving in your eyes  
That pulls me closer (That pulls me closer)  
It's so subtle (It's so subtle)  
I'm in trouble (I'm in trouble)  
But I'd love to be in trouble with you

D:  
Let's Marvin Gaye and get it on  
You got the healing that I want  
Just like they say it in the song  
Until the dawn Let's Marvin Gaye and get it on

E:  
You got to give it up to me  
I'm screaming mercy, mercy please  
Just like they say it in the song  
Until the dawn Let's Marvin Gaye and get it on

F:  
And when you leave me all alone  
I'm like a stray without a home  
I'm like a dog without a bone  
I just want you for my own  
I got to have you babe

G:  
Woah There's loving in your eyes  
That pulls me closer (That pulls me closer)  
It's so subtle (It's so subtle)  
I'm in trouble (I'm in trouble)

H:  
But I'd love to be in trouble with you  
Let's Marvin Gaye and get it on  
Oh baby, you got that healing that I want  
Just like they say it in the song  
Until the dawn Let's Marvin Gaye and get it on

I:  
Let's Marvin Gaye and get it on  
You got that healing that I want  
Just like they say it in the song  
Until the dawn Let's Marvin Gaye and get it on, baby

J:  
You got to give it up to me  
I'm screaming mercy, mercy please  
Just like they say it in the song  
Until the dawn Let's Marvin Gaye and get it on  
Just like they say it in the song  
Until the dawn Let's Marvin Gaye and get it on