



River deep, mountain high – Chorus-LIGHT

Pag.

02	Full score combo C instrument
10	Full score combo Bb instrument
18	Full score combo Eb instrument
26	Full score combo 4 extra staves
38	Full score small combo
49	Full score small combo 2 extra staves
64	Full score vocals (Chorus-LIGHT) Piano Solo Advanced
73	Full score vocals (Chorus-LIGHT) Piano Solo Intermediate
82	Vocals (Chorus-LIGHT)
89	C instrument
91	Bb instrument
93	Eb instrument
95	Piano Combo
100	Piano Solo Advanced
105	Piano Solo Intermediate
110	Synthesizer
114	Guitar
117	Bassguitar
120	Drums
124	Percussion
127	Leadsheet (melody, lyrics, chords)
131	Lyrics



Chorus-LIGHT Combo C

River Deep Mountain High

- Tina Turner -

Words and Music by Barry-Greenwich-Spector
Arranged by Theo Janssen
Original Key

DEMO

DEMO

With a rocky feeling ♩=160

A

B

High

Too too doo too too doo Too too doo too too doo

Mid

When I was a li - ttle girl I had a rag doll The on - ly doll I've e - ver owned

Low

Too too doo too too doo Too too doo too too doo

C Instr.

Piano Combo

N.C. G/d D G/d D G/d D

Synthesizer

Ac. Brass Hammond Organ

Guitar

El. Guitar (lightly overdrive) Powerchords

Bass Guitar

Drums

Percussion

Tambourine

© www.ChorusOnline.com / 0031 (0) 6 - 41 57 77 56

River Deep Mountain High 3

Chorus-LIGHT Combo C

D

30

H: *Ri - ver deep moun - tain high*

M: *day by day Do I love you my oh my Ri - ver deep moun - tain high*

L: *day by day ah ah ah ah ah ah ah ah ah ah ah ah ah*

C: *A A^b G A A^b*

P.C. *Ac. Brass*

Synth

Gtr.

Bass

Dr. *2 2 2*

Perc.

E

40

H: *How I love you ba - by ba - by ba - by bay - by*

M: *If I lost you would I cry How I love you ba - by ba - by ba - by bay - by*

L: *ah ah ah ah ah ah ah How I love you ba - by ba - by ba - by bay - by*

C: *G A N.C.*

P.C.

Synth

Gtr.

Bass

Dr.

Perc.

River Deep Mountain High 5

Chorus-LIGHT Combo C

70

H — And it gets bi-gger ba-by, and hea-ven knows — And it gets swee-ter ba-by, as it grows

M like a ri-ver flows — And it gets bi-gger ba-by, and hea-ven knows — And it gets swee-ter ba-by, as it grows —

L like a ri-ver flows — And it gets bi-gger ba-by, and hea-ven knows — and hea-ven knows — And it gets swee-ter ba-by, as it grows

C A E A E A

P.C.

Synth

Gr.

Bass

Dr.

Perc.

[H]

70

H — Do I love you my oh my — Ri-ver deep moun-tain high — If I lost you would I cry

M *Lead*
Do I love you my oh my — Ri-ver deep moun-tain high — If I lost you would I cry

L — Do I love you my oh my — Ri-ver deep moun-tain high — If I lost you would I cry

C A^b G A N.C. G

P.C.

Synth *Ac. Brass*

Gr.

Bass

Dr.

Perc.

River Deep Mountain High 7

Chorus-LIGHT Combo C

112

H: And I love you ba - by ri - ver deep moun - tain high

M: ri - ver deep moun - tain high

L: And I love you ba - by like a school boy loves his pet ri - ver deep moun - tain high

C:

P.C.:

Synth: *Ac. Brass*

Gtr.:

Bass:

Dr.:

Perc.:

[K]

121

H: Ba - by Ba - by Ba - by Ba - by Ba - by

M: Ba - by Ba - by Ba - by Ba - by Ba - by

L: Ba - by Ba - by Ba - by Ba - by Ba - by

C:

P.C.:

Synth:

Gtr. *Powerchords*

Bass:

Dr.:

Perc.:



Chorus-LIGHT Combo Bb

River Deep Mountain High

- Tina Turner -

Words and Music by Barry-Greenwich-Spector
Arranged by Theo Janssen
Original Key

DEMO

DEMO

With a rocky feeling ♩ = 160

A

B

High

Too too doo too too doo too too doo too too doo

Mid

When I was a li - ttle girl I had a rag doll The on - ly doll I've e - ver owned

Low

Too too doo too too doo too too doo too too doo

Bb Instr.

N.C. G/d D G/d D G/d D

Piano Combo

Ac. Brass Hammond Organ

Synthesizer

Guitar

El. Guitar (lightly overdrive) Powerchords

Bass Guitar

Drums

Percussion

Tambourine

© www.ChorusOnline.com / 0031 (0) 6 - 41 57 77 56

River Deep Mountain High 3

Chorus-LIGHT Combo Bb

D

30

H
—
Ri - ver deep moun - tain high —

M
day by day — Do I love — you my oh my —
Ri - ver deep moun - tain high —

L
day by day —
ah ah ah ah ah ah ah ah ah ah ah ah ah ah

Bb
A A^b G A A^b

P.C.
Ac. Brass

Synth

Gtr.

Bass

Dr.

Perc.

E

40

H
How I love you ba - by — ba - by, ba - by, bay - by —

M
If I lost — you would I cry —
How I love you ba - by — ba - by, ba - by, bay - by —

L
ah ah ah ah ah ah ah How I love you ba - by — ba - by, ba - by, bay - by —

Bb
G A N.C.

P.C.

Synth

Gtr.

Bass

Dr.

Perc.

River Deep Mountain High 5

Chorus-LIGHT Combo Bb

70

H
— And it gets bi-gger ba-by, and hea-ven knows — And it gets swee-ter ba-by, as it grows

M
like a ri-ver flows — And it gets bi-gger ba-by, and hea-ven knows — And it gets swee-ter ba-by, as it grows —

L
like a ri-ver flows — And it gets bi-gger ba-by, and hea-ven knows — and hea-ven knows — And it gets swee-ter ba-by, as it grows

Bb

P.C.
A E A E A

Synth

Gtr.

Bass

Dr.

Perc.

[H]

79

H
— Do I love you my oh my — Ri-ver deep moun-tain high — If I lost

M
Lead
Do I love you my oh my — Ri-ver deep moun-tain high — If I lost

L
— Do I love you my oh my — Ri-ver deep moun-tain high — If I lost

Bb

P.C.
A^b G A N.C. G

Synth
Ac. Brass

Gtr.

Bass

Dr.

Perc.

River Deep Mountain High 7

Chorus-LIGHT Combo Bb

III

H And I love you ba - by ri - ver deep moun - tain high

M ro - bin loves to sing ri - ver deep moun - tain high

L And I love you ba - by like a school boy loves his pet ri - ver deep moun - tain high

Bb

P.C.

Synth *Ac. Brass*

Gtr.

Bass

Dr.

Perc.

K

120

H Ba - by Ba - by Ba - by Ba - by Ba - by

M Ba - by Ba - by Ba - by Ba - by Ba - by

L Ba - by Ba - by Ba - by Ba - by Ba - by

Bb

P.C. *A* *2* *2* *A*

Synth

Gtr. *Power chords*

Bass

Dr.

Perc.



River Deep Mountain High

- Tina Turner -

Words and Music by Barry-Greenwich-Spector
Arranged by Theo Janssen
Original Key

With a rocky feeling ♩=160

A

B

High

Too too doo too too doo too too doo too too doo

Mid

When I was a li-ttle girl I had a rag doll The on-ly doll I've e-ver owned

Low

Too too doo too too doo too too doo too too doo

Eb Instr.

N.C. G/d D G/d D G/d D

Piano Combo

Synthesizer

Ac. Brass Hammond Organ

Guitar

El. Guitar (Highly overdrive) Power chords

Bass Guitar

Drums

Percussion

Tambourine

© www.ChorusOnline.com / 0031 (0) 6 - 41 57 77 56

River Deep Mountain High 3

Chorus-LIGHT Combo Eb

D

30

H: ———— Ri - ver deep — moun - tain high —

M: day by day — Do I love — you my oh my — Ri - ver deep — moun - tain high —

L: day by day — ah ah ah ah ah ah ah ah ah ah ah ah ah ah

Eb: A A^b G A A^b

P.C.: Ac. Brass

Synth:

Gtr.:

Bass:

Dr.:

Perc.:

E

40

H: ———— How I love you ba - by — ba - by, ba - by, bay - by —

M: If I lost — you would I cry — How I love you ba - by — ba - by, ba - by, bay - by —

L: ah ah ah ah ah ah ah How I love you ba - by — ba - by, ba - by, bay - by —

Eb: G A N.C.

P.C.:

Synth:

Gtr.:

Bass:

Dr.:

Perc.:

River Deep Mountain High 5

Chorus-LIGHT Combo Eb

70

H
— And it gets bi-gger ba - by, and hea-ven knows — And it gets swee-ter ba - by, as it grows

M
like a ri-ver flows — And it gets bi-gger ba - by, and hea-ven knows — And it gets swee-ter ba - by, as it grows —

L
like a ri-ver flows — And it gets bi-gger ba - by, and hea-ven knows — and hea-ven knows — And it gets swee-ter ba - by, as it grows

E♭

P.C.
A E A E A

Synth

Gtr.

Bass

Dr.

Perc.

79

H
— Do I love you my oh my — Ri - ver deep moun-tain high — If I lost

M
Lead
Do I love you my oh my — Ri - ver deep moun-tain high — If I lost

L
— Do I love you my oh my — Ri - ver deep moun-tain high — If I lost

E♭

P.C.
A[♭] G A N.C. G

Synth
Ac. Brass

Gtr.

Bass

Dr.

Perc.

River Deep Mountain High 7

Chorus-LIGHT Combo Eb

III

H: And I love you ba - by ri - ver deep moun - tain high

M: ro - bin loves to sing ri - ver deep moun - tain high

L: And I love you ba - by like a school boy loves his pet ri - ver deep moun - tain high

Eb

P.C.

Synth: *Ac. Brass*

Gtr.

Bass

Dr.

Perc.

K

121

H: Ba - by Ba - by Ba - by Ba - by Ba - by

M: Ba - by Ba - by Ba - by Ba - by Ba - by

L: Ba - by Ba - by Ba - by Ba - by Ba - by

Eb

P.C. *A* *2* *2* *A^b*

Synth

Gtr. *Powerchords*

Bass

Dr.

Perc.

River Deep Mountain High 3

Chorus-LIGHT 4 extra staves

D

3/6

H — And it gets high — er — day by day —

M — let me say — hoo — day by day — Do I love — you my oh my — ah ah ah ah ah ah ah ah ah ah ah ah ah

L — let me say — hoo — day by day — ah ah ah ah ah ah ah ah ah ah ah ah ah

1
2
3
4

A E A A^b G A

PC.

Synth

Str.

Bass

Dr.

Perc.

River Deep Mountain High 5

CHORUS-LIGHT 4 EXTRA STAVES

F

53

H *Lead*
Too too doo too too doo Too too doo too too doo Too too doo too too doo Too too doo too too doo Too too doo too too doo

M *Lead*
When you were a young boy did you have a pu - ppy That al - ways fo - llo - wed you a - round — Well I'm go - ing to be as fai - thful as that pu - ppy

L
When you were a young boy did you have a pu - ppy That al - ways fo - llo - wed you a - round — Well I'm go - ing to be as fai - thful as that pu - ppy

1
2
3
4

G/d D G/d D G/d D D D/a A D/a A D/a A A G/d D G/d D

PC.
Hammond Organ

Synth
Swarming

Ch.
Swarming

Bass
3 3

Dr.
V

Perc.
V

River Deep Mountain High 7

CHORUS-LIGHT 4 EXTRA STAVES

H

76

H
swee-ter ba - by as it grows — Do I love — you my oh my — Ri - ver deep — moun-tain high — If I lost

M
swee-ter ba - by as it grows — *Lead* Do I love — you my oh my — Ri - ver deep — moun-tain high — If I lost

L
swee-ter ba - by as it grows — Do I love — you my oh my — Ri - ver deep — moun-tain high — If I lost

1
2
3
4

E A A^b G A N.C. G

PC.
Synth
Ac. Brass
Chr.
Bass
Dr.
Perc.

River Deep Mountain High 9

CHORUS-LIGHT 4 EXTRA STAVES

102

H I love you ba-by like a no-wei loves the spring

M And I love you ba - by like a no-bin loves to sing

L And I love you ba - by like a

1

2

3

4

PC. Hammond Organ

Synth

Chr. $\frac{2}{8}$

Bass $\frac{2}{8}$

Dr. *sim.*

Perc. $\frac{2}{8}$

River Deep Mountain High 11

Chorus-LIGHT 4 extra staves

1

127

H Ba - by — Ba - by — Do I love — you my oh my — Ri - ver deep — moun-tain high — If I lost

M Ba - by — Ba - by — Do I love — you my oh my — Ri - ver deep — moun-tain high — If I lost

L Ba - by — Ba - by — Do I love — you my oh my — Ri - ver deep — moun-tain high — If I lost

1
2
3
4

PC. *Strumming* A^b G A A^b G

Synth *Strumming*

Chr. *Strumming*

Bass *Strumming*

Dr. *Strumming*

Perc. *Strumming*



Chorus-LIGHT small Combo

River Deep Mountain High

- Tina Turner -

Words and Music by Barry-Greenwich-Spector
Arranged by Theo Janssen
Original Key

With a rocky feeling ♩ = 160

A

B

High

Mid

Low

Piano Combo

Guitar

Bass Guitar

Drums

Percussion

N.C.

G/d D G/d D G/d

El. Guitar (lightly overdrive)

Powerchords

Tambourine

Too too doo too too doo

When I was a li-ttle girl I had a rag doll

Too too doo too too doo

© www.ChorusOnline.com / 0031 (0) 6 - 41 57 77 56

River Deep Mountain High 3

Chorus-LIGHT small Combo

22

H
— And it gets dee - per, — let me say — And it gets high - er, —

M
In ev'-ry way — hoo — let me say — hoo —

L
In ev'-ry way — hoo — let me say — hoo —

P.C.
A E A E

Gtr.

Bass

Dr.

Perc.

D

29

H
day by day —

M
— day by day — Do I love — you my oh my —

L
— day by day — ah ah ah ah ah ah ah

P.C.
A A^b G

Gtr.

Bass

Dr.

Perc.

River Deep Mountain High 5

Chorus-LIGHT small Combo

F

50

H
Too too doo too too too doo Too too doo too

M
Lead
When you were a young boy did you have a pu - ppy That al - ways

L
When you were a young boy did you have a pu - ppy That al - ways

P.C.
G/d D G/d D G/d

Gtr.
Strumming

Bass

Dr.

Perc.

57

H
too too doo Too too doo too too too doo Too too doo too too too doo Too too doo too too too doo

M
fo - lloved you a - round___ Well I'm go - nna be as fai - thful as that pu - ppy

L
fo - lloved you a - round___ Well I'm go - nna be as fai - thful as that pu - ppy

P.C.
D D/a A D/a A D/a A G/d D G/d D

Gtr.

Bass

Dr.

Perc.

River Deep Mountain High 7

Chorus-LIGHT small Combo

H

78

H
as it grows___ Do I love___ you my oh my___ Ri - ver deep___ moun-tain high

M
___ Do I love___ you my oh my___ Ri - ver deep___ moun-tain high

L
as it grows___ Do I love___ you my oh my___ Ri - ver deep___ moun-tain high

P.C.
A A^b G A

Gr.
Bass
Dr.
Perc.

86

H
___ If I lost___ you would I cry___ How I love you ba - by___

M
___ If I lost___ you would I cry___ How I love you ba - by___

L
___ If I lost___ you would I cry___ How I love you ba - by___

P.C.
N.C. G A

Gr.
Bass
Dr.
Perc.

River Deep Mountain High 9

Chorus-LIGHT small Combo

109

H

M

L

P.C.

Gtr.

Bass

Dr.

Perc.

And I love you ba - by like a ro - bin loves to sing

And I love you ba - by like a school boy loves his pet

K

116

H

M

L

P.C.

Gtr.

Bass

Dr.

Perc.

And I love you ba - by ri - ver deep moun - tain high Ba - by

ri - ver deep moun - tain high Ba - by

ri - ver deep moun - tain high Ba - by

A

Powerchords

River Deep Mountain High 11
Chorus-LIGHT small Combo

138

H
If I lost you would I cry How I love you ba - by

M
If I lost you would I cry How I love you ba - by

L
If I lost you would I cry How I love you ba - by

P.C.
A^b G A

Gtr.

Bass

Dr.

Perc.

M

145

H
ba - by, ba - by, bay - by

M
ba - by, ba - by, bay - by

L
ba - by, ba - by, bay - by

P.C.
N.C.

Gtr.

Bass

Dr.

Perc.

River Deep Mountain High 7

Chorus-LIGHT small Combo extra staves

G

62

H Too too doo Too too doo Too too doo Too too doo Cause it grows stron - ger - like a ri-ver flows -

M fai - thful as that pu - ppy No I'll ne-ver let you down - Cause it grows stron - ger - like a ri-ver flows

L fai - thful as that pu - ppy No I'll ne-ver let you down - Cause it grows stron - ger - like a ri-ver flows

1

2

Gtr. G/d D G/d D G/d D D D/a A E A

P.C.

Bass

Dr.

Perc.

River Deep Mountain High 9

Chorus-LIGHT small Combo extra staves

H

80
H
Do I love you my oh my — Ri - ver deep — moun-tain high — If I lost you would I cry

M
Do I love you my oh my — Ri - ver deep — moun-tain high — If I lost you would I cry

L
Do I love you my oh my — Ri - ver deep — moun-tain high — If I lost you would I cry

1
2

G

A

N.C.

G

P.C.
G A N.C. G

Gtr.
8

Bass

Dr.

Perc.
8

River Deep Mountain High 13
Chorus-LIGHT small Combo extra staves

K

120

H Ba - by Ba - by Ba - by Ba - by

M Ba - by Ba - by Ba - by Ba - by

L Ba - by Ba - by Ba - by Ba - by

Gtr. Powerchords

Bass

Dr.

Perc.

P.C.

A

1

2



Chorus-LIGHT Piano Solo Advanced

River Deep Mountain High

- Tina Turner -

Words and Music by Barry-Greenwich-Spector
Arranged by Theo Janssen
Original Key

With a rocky feeling ♩ = 160

A

B

High

Mid

Low

Piano Solo Advanced

N.C.

G/d D G/d

Too too doo too

When I was a li-ttle girl I had a rag

Too too doo too

7

H

M

L

P.S.A.

too too doo Too too doo too too too doo Too too doo too too too doo Too too doo too

_ doll The on-ly doll I've e-ver owned Now I

too too doo Too too doo too too too doo Too too doo too too too doo Too too doo too

D G/d D D/a A D/a A D/a

© www.ChorusOnline.com / 0031 (0) 6 - 41 57 77 56

River Deep Mountain High 5
Chorus-LIGHT Piano Solo Advanced

G

68

H
ger, — like a ri-ver flows — And it gets bi-gger ba-by,

M
ger, — like a ri-ver flows — And it gets bi-gger ba-by,

L
ger, — like a ri-ver flows — And it gets bi-gger ba-by, and hea-ven knows

P.S.A.
E A E

74

H
and hea-ven knows — And it gets swee-ter ba-by, as it grows — *Lead*

M
and hea-ven knows — And it gets swee-ter ba-by, as it grows —

L
— and hea-ven knows — And it gets swee-ter ba-by, as it grows —

P.S.A.
A E A A^b

H

80

H
Do I love — you my oh my — Ri-ver deep — moun-tain high —

M
Do I love — you my oh my — Ri-ver deep — moun-tain high —

L
Do I love — you my oh my — Ri-ver deep — moun-tain high —

P.S.A.
G A N.C.

River Deep Mountain High 7
Chorus-LIGHT Piano Solo Advanced

106

H
ba - by like a flo - wer loves the spring _____

M

L

P.S.A.

And I love you ba - by like a

111

H

M
ro - bin loves to sing _____

L

P.S.A.

And I love you ba - by like a school boy loves his pet

116

H

M
And I love you ba - by ri - ver deep moun - tain high _____

L

P.S.A.

ri - ver deep moun - tain high _____

ri - ver deep moun - tain high _____

River Deep Mountain High 9
Chorus-LIGHT Piano Solo Advanced

136

H
— moun - tain high — If I lost — you would I cry

M
— moun - tain high — If I lost — you would I cry

L
— moun - tain high — If I lost — you would I cry

P.S.A.
A^b G

141

H
— How I love you ba - by — ba - by, ba - by, bay - by —

M
— How I love you ba - by — ba - by, ba - by, bay - by —

L
— How I love you ba - by — ba - by, ba - by, bay - by —

P.S.A.
A

M

147

H
— — — — —

M
— — — — —

L
— — — — —

P.S.A.
N.C.



Chorus-LIGHT Piano Solo Intermediate

River Deep Mountain High

- Tina Turner -

Words and Music by Barry-Greenwich-Spector
Arranged by Theo Janssen
Original Key

With a rocky feeling ♩ = 160

A

B

High

Mid

Low

Piano Solo Intermediate

N.C.

G/d D G/d

Too too doo too

When I was a li - ttle girl ____ I had a rag

Too too doo too

H

M

L

P.S.I.

7

too too doo Too too doo too too too doo Too too doo too too too doo Too too doo too

_ doll The on - ly doll ____ I've e - ver owned ____ Now I

too too doo Too too doo too too too doo Too too doo too too too doo Too too doo too

D G/d D D/a A D/a A D/a

© www.ChorusOnline.com / 0031 (0) 6 - 41 57 77 56

River Deep Mountain High 3
Chorus-LIGHT Piano Solo Intermediate

D

31

H
M
L

P.S.I.

Ri - ver deep
Do I love you my oh my Ri - ver deep
ah ah ah ah ah ah ah

A^b G A

37

H
M
L

P.S.I.

moun - tain high
moun - tain high If I lost you would I cry
ah ah ah ah ah ah ah ah ah ah ah ah ah

A^b G

E

44

H
M
L

P.S.I.

How I love you ba - by ba - by, ba - by, bay - by
How I love you ba - by ba - by, ba - by, bay - by
How I love you ba - by ba - by, ba - by, bay - by

A N.C.

River Deep Mountain High 5

Chorus-LIGHT Piano Solo Intermediate

69

H
like a ri - ver flows___ And it gets bi - gger ba - by,

M
like a ri - ver flows___ And it gets bi - gger ba - by,

L
like a ri - ver flows___ And it gets bi - gger ba - by, and hea - ven knows

P.S.I.
A E

74

H
and hea - ven knows___ And it gets swee - ter ba - by, as it grows___ *Lead*

M
and hea - ven knows___ And it gets swee - ter ba - by, as it grows___

L
___ and hea - ven knows___ And it gets swee - ter ba - by, as it grows___

P.S.I.
A E A A^b

H

80

H
Do I love___ you my oh my___ Ri - ver deep___ moun - tain high___

M
Do I love___ you my oh my___ Ri - ver deep___ moun - tain high___

L
Do I love___ you my oh my___ Ri - ver deep___ moun - tain high___

P.S.I.
G A N.C.

River Deep Mountain High 7
Chorus-LIGHT Piano Solo Intermediate

105

H
I love you ba - by like a flo - wer loves the spring _____

M
_____ And I love you ba - by like a

L

P.S.I.

111

H

M
ro - bin loves to sing _____

L
_____ And I love you ba - by like a school boy loves his pet

P.S.I.

116

H
_____ And I love you ba - by ri - ver deep moun - tain high _____

M
_____ ri - ver deep moun - tain high _____

L
_____ ri - ver deep moun - tain high _____

P.S.I.



Chorus-LIGHT

River Deep Mountain High

- Tina Turner -

Words and Music by Barry-Greenwich-Spector
Arranged by Theo Janssen
Original Key

With a rocky feeling ♩ = 160

A

High

Mid

Low

When I was a li-ttle girl

B

6

H

M

L

Too too doo too too too doo Too too doo too too too doo Too too doo too

I had a rag doll The on-ly doll I've e-ver owned

Too too doo too too too doo Too too doo too too too doo Too too doo too

11

H

M

L

too too doo Too too doo too too too doo Too too doo too too too doo

Now I love you just the way I loved that rag doll

too too doo Too too doo too too too doo Too too doo too too too doo

River Deep Mountain High 3
Chorus-LIGHT

39

H
M
L

How I love you
If I lost you would I cry
ah ah ah ah ah ah ah ah How I love you

E

45

H
M
L

ba - by ba-by, ba - by, bay - by
ba - by ba-by, ba - by, bay - by
ba - by ba-by, ba - by, bay - by

F

52

H
M
L

Lead
Too too doo too too doo Too too doo too
When you were a young boy did you have a pu - ppy That al - ways
When you were a young boy did you have a pu - ppy That al - ways

57

H
M
L

too too doo Too too doo too too doo Too too doo too too doo
fo-llowed you a-round Well I'm go - nna be as
fo-llowed you a-round Well I'm go - nna be as

River Deep Mountain High 5
Chorus-LIGHT

83

H
M
L

Ri - ver deep ___ moun - tain high ___ If I lost

89

H
M
L

— you would I cry ___ How I love you ba - by ___

94

H
M
L

ba - by, ba - by, bay - by ___

I

J

101

H
M
L

I love you ba - by like a flo - wer loves the spring ___

River Deep Mountain High 7
Chorus-LIGHT

L

131

H Do I love you my oh my Ri - ver deep

M *Lead*
Do I love you my oh my Ri - ver deep

L 8
Do I love you my oh my Ri - ver deep

136

H — moun - tain high — If I lost you would I cry

M — moun - tain high — If I lost you would I cry

L 8
— moun - tain high — If I lost you would I cry

141

H — How I love you ba - by — ba - by, ba - by,

M — How I love you ba - by — ba - by, ba - by,

L 8
— How I love you ba - by — ba - by, ba - by,

M

146

H bay - by —

M bay - by —

L 8
bay - by —



C Instrument

River Deep Mountain High

- Tina Turner -

Words and Music by Barry-Greenwich-Spector
Arranged by Theo Janssen
Original Key

With a rocky feeling ♩ = 160

A

C Instr.

B

C

6 **14**

25

D

31 **2**

38 **2**

E

45

F

G

51 **14**

70



Bb Instrument

River Deep Mountain High

- Tina Turner -

Words and Music by Barry-Greenwich-Spector
Arranged by Theo Janssen
Original Key

With a rocky feeling ♩ = 160

A

Bb Instr.

B **C**

6 14

25

D

31 2

38 2

E

45

F **G**

51 14

70

© www.ChorusOnline.com / 0031 (0) 6 - 41 57 77 56



E♭ Instrument

River Deep Mountain High

- Tina Turner -

Words and Music by Barry-Greenwich-Spector
Arranged by Theo Janssen
Original Key

With a rocky feeling ♩ = 160

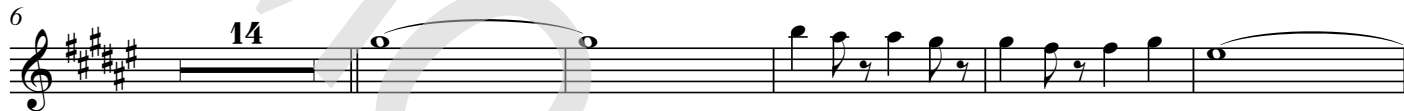
A

E♭ Instr.



B

C



D

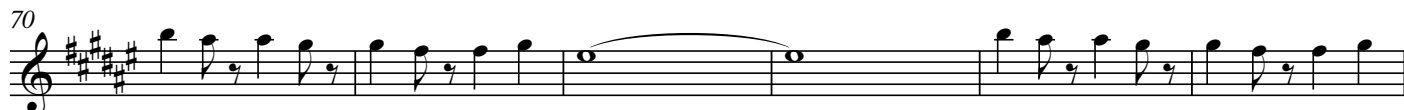


E



F

G





Piano Combo

River Deep Mountain High

- Tina Turner -

Words and Music by Barry-Greenwich-Spector

Arranged by Theo Janssen

Original Key

With a rocky feeling ♩ = 160

A

N.C.

B

6 G/d D G/d D G/d D D D/a A D/a A

12 D/a A G/d D G/d D G/d D D

C

18 D/a A E A

24 E A E



Piano Solo Advanced

River Deep Mountain High

- Tina Turner -

Words and Music by Barry-Greenwich-Spector
Arranged by Theo Janssen
Original Key

With a rocky feeling ♩ = 160

A

N.C.

B

6 G/d D G/d D G/d D D D/a A D/a A

12 D/a A G/d D G/d D G/d D D

C

18 D/a A E A

24 E A E



River Deep Mountain High

- Tina Turner -

Words and Music by Barry-Greenwich-Spector

Arranged by Theo Janssen

Original Key

With a rocky feeling ♩ = 160

A

N.C.

B

6 G/d D G/d D G/d D D D/a A D/a A

12 D/a A G/d D G/d D G/d D

C

18 D/a A E A

24 E A E





Synthesizer

River Deep Mountain High

- Tina Turner -

Words and Music by Barry-Greenwich-Spector
Arranged by Theo Janssen
Original Key

With a rocky feeling ♩ = 160

A

Ac. Brass

B

6 *Hammond Organ*

C

D



Guitar

River Deep Mountain High

- Tina Turner -

Words and Music by Barry-Greenwich-Spector
Arranged by Theo Janssen
Original Key

With a rocky feeling ♩ = 160

A

N.C.
El. Guitar (lightly overdrive)

Guitar

B

G/d D G/d D G/d D D D/a A D/a A

Powerchords

D/a A G/d D G/d D G/d D

C

D/a A E A

Strumming

E A E

D

A A^b G

A A^b G

A



Bass Guitar

River Deep Mountain High

- Tina Turner -

Words and Music by Barry-Greenwich-Spector
Arranged by Theo Janssen
Original Key

With a rocky feeling ♩ = 160

A

N.C.

Bass Guitar

B

G/d D G/d D G/d D D D/a A D/a A

12 D/a A G/d D G/d D G/d D

C

18 D/a A E A

24 E A E

D

30 A A^b G

36 A A^b G

© www.ChorusOnline.com / 0031 (0) 6 - 41 57 77 56

Drumkit/Percussion

Hi-Hat closed
Hi-Hat open
Snareclick
Bassdrum(Kick)
Snaredrum
Hi-Hat Foot
High Tom
Mid Tom
Low Tom
Floor Tom
Ride Cymbal
Ride Bell/Cup
Crash Cymbal
Splash Cymbal
Triangle mute
Tambourine Beating
Triangle open

- Shaker(eggs)
- Claves
- High Timbale
- Sleigh Bells
- Bell Tree
- Maracas
- Wind Chimes

Handclap
Guro
Woodblock High
Timbale Low
Agogo High
Cowbell
Conga Cabasa
Woodblock Low
Agogo Low



Drums

River Deep Mountain High

- Tina Turner -

Words and Music by Barry-Greenwich-Spector
Arranged by Theo Janssen
Original Key

With a rocky feeling ♩ = 160

A

Drums

B

C

D

© www.ChorusOnline.com / 0031 (0) 6 - 41 57 77 56

Drumkit/Percussion

Hi-Hat closed
Hi-Hat open
Snareclick
Bassdrum(Kick)
Snaredrum
Hi-Hat Foot
High Tom
Mid Tom
Low Tom
Floor Tom
Ride Cymbal
Ride Bell/Cup
Crash Cymbal
Splash Cymbal
Triangle mute
Tambourine Beating
Triangle open

- Shaker(eggs)
- Claves
- High Timbale
- Sleigh Bells
- Bell Tree
- Maracas
- Wind Chimes

Handclap
Guro
Woodblock High
Timbale Low
Agogo High
Cowbell
Conga Cabasa
Woodblock Low
Agogo Low



Percussion

River Deep Mountain High

- Tina Turner -

Words and Music by Barry-Greenwich-Spector
Arranged by Theo Janssen
Original Key

With a rocky feeling ♩ = 160

A

B

Tambourine

14

Percussion

C

20

D

28

36

E

44

F

52

60

G

68

© www.ChorusOnline.com / 0031 (0) 6 - 41 57 77 56



Leadsheet

River Deep Mountain High

- Tina Turner -

Words and Music by Barry-Greenwich-Spector

Arranged by Theo Janssen

Original Key

With a rocky feeling ♩ = 160

A

N.C.

When I was a li-ttle girl

B

I had a rag doll The on-ly doll I've e-ver owned

Now I love you just the way I loved that rag doll But on-ly now

C

my love has grown And it gets stron-ger, in ev-e-ry way

And it gets dee-per, let me say And it gets high-

D

- er, day by day Do I love you my oh my



Lyrics

River Deep Mountain High

- Tina Turner -

Words and Music by Barry-Greenwich-Spector

Arranged by Theo Janssen

Original Key

A

B

When I was a little girl I had a rag doll
The only doll I've ever owned
Now I love you just the way I loved that rag doll
But only now my love has grown

C

And it gets stronger, in every way
And it gets deeper, let me say
And it gets higher, day by day

D

Do I love you my oh my River deep mountain high
If I lost you would I cry How I love you baby, baby, baby, baby

E

F

When you were a young boy did you have a puppy
That always followed you around
Well I'm gonna be as faithful as that puppy
No I'll never let you down

G

Cause it grows stronger, like a river flows
And it gets bigger baby, and heaven knows
And it gets sweeter baby, as it grows

H

Do I love you my oh my River deep, mountain high
If I lost you would I cry How I love you baby, baby, baby, baby

I

J

I love you baby like a flower loves the spring
And I love you baby like a robin loves to sing
And I love you baby like a school boy loves his pet
And I love you baby, river deep mountain high

K

Baby Baby Baby Baby Baby

L

Do I love you my oh my River deep, mountain high
If I lost you would I cry How I love you baby, baby, baby, baby

M