



## **Lost without you SMATB**

Pag.

02	Full score vocals (SMATB) piano advanced
13	Vocals (SMATB)
20	Piano
23	Leadsheet (melody, lyrics, chords)
26	Lyrics

**The index numbers above are based on the original (complete) PDF-file.  
In this smaller DEMO-version, the numbers above do NOT match this file !**

# Lost Without You

- Freya Ridings -

Words and Music by Freya Ridings  
Arranged by Stefan Flügel  
Original Key: Gb major

♩ = 96

**A**

Backtrack includes 4 measures intro

Soprano

Mezzo

Alto

Tenor

Bass

Piano Solo  
Advanced

*p*

*ped.* *ped.* *ped.* *ped.* *Pedal sim.*

G D Am C G D

it's like no o-ther pain I've e-ver known.

Stan-ding on \_ the plat - form watch-ing you go, \_

Lost Without You 3  
SMATB Piano Solo Advanced

19

S  
with - - - - out you. Lost with - - - - out

M  
with-out you, I just feel crushed with-out you.

A  
with - - - - out you. Lost with - - - - out

T  
with - - - - out you. Lost with - - - - out

B  
with - - - - out you. Lost with - - - - out

P.S.A.  
D Am C G D Am

25

S  
you.

M  
Yes, I've been strong for so long that I ne - ver thought how much I nee - ded you,

A  
you.

T  
you.

B  
you.

P.S.A.  
C G D Am C

39

S  
nø nø

M  
but you were the on - ly safe ha - ven\_\_\_\_ that I've known.\_\_\_\_

A  
nø nø

T  
nø nø

B  
nø nø

G D Am

P.S.A.

This block contains the musical score for measures 39 through 41. It features five vocal staves (Soprano, Mezzo, Alto, Tenor, Bass) and a Piano Solo section. The Soprano staff has a vocal line with lyrics 'nø nø'. The Mezzo staff has lyrics 'but you were the on - ly safe ha - ven\_\_\_\_ that I've known.\_\_\_\_'. The Alto, Tenor, and Bass staves also have vocal lines with 'nø' lyrics. The Piano Solo section shows chords G, D, and Am with corresponding piano accompaniment.

42

S  
nø nø

M  
Hits me at full speed, feel like I can't breathe,\_\_\_\_

A  
nø nø

T  
nø nø

B  
nø nø

C G mf D

P.S.A.

This block contains the musical score for measures 42 through 44. It features five vocal staves and a Piano Solo section. The Soprano staff has lyrics 'nø nø'. The Mezzo staff has lyrics 'Hits me at full speed, feel like I can't breathe,\_\_\_\_'. The Alto, Tenor, and Bass staves have vocal lines with 'nø' lyrics. The Piano Solo section shows chords C, G (mf), and D with piano accompaniment.

D

51

S  
M  
A  
T  
B

let you go. I think I'm lost with-out you,

mmh  
mmh  
mmh

G D Am C

P.S.A. *p* *pp*

56

S  
M  
A  
T  
B

mmh dum dum dum dum dum dum dōh

I think I'm lost, lost, lost, ooh way,

mmh dum dum dum dum dum dum dōh

mmh dum dum dum dum dum dum dōh

mmh dum dum dum dum dum dum dōh

G D A C

P.S.A. *p* *cresc.*

# Lost Without You 9

SMATB Piano Solo Advanced

F

66

S  
nan nan

M  
\_\_\_\_\_ ooh \_\_\_\_\_ I think I'm lost \_\_\_\_\_

A  
nan nan

T  
nan nan

B  
dm dm \_\_\_\_\_ dm dm dm \_\_\_\_\_ dm dm dm \_\_\_\_\_ dm

A C G

P.S.A.

69

S  
nan nan

M  
\_\_\_\_\_ with - out \_\_\_\_\_ you, \_\_\_\_\_ you, \_\_\_\_\_

A  
nan nan

T  
nan nan

B  
dm dm \_\_\_\_\_ dm dm dm \_\_\_\_\_ dm dm dm \_\_\_\_\_ dm

D A C

P.S.A.

G

79 *rit.*

S  
oooh Stan - ding on the plat - form watch - ing you go, —

M  
you. Stan - ding on the plat - form watch - ing you go, —

A  
oooh Stan - ding on the plat - form watch - ing you go, —

T  
oooh Stan - ding on the plat - form watch - ing you go, —

B  
dooh

P.S.A.  
C G *pp* D Am C

85

S  
you said: "I wan - na see the world — mmh —

M  
you said: "I wan - na see the world — and I said: "go."

A  
you said: "I wan - na see the world — mmh mmh mmh

T  
you said: "I wan - na see the world — mmh mmh mmh

B  
you said: "I wan - na see the world — mmh mmh mmh

P.S.A.  
G D Am C

# Lost Without You

- Freya Ridings -

*Words and Music by Freya Ridings  
Arranged by Stefan Flügel  
Original Key: Gb major*

♩ = 96

**A**

*Backtrack includes 4 measures intro*

Soprano

Mezzo

Alto

it's like no o-ther pain

Stan-ding on \_ the plat - form watch-ing you go, \_

6

S

M

A

To love some-one so much \_ to have no con-trol, \_

I've e-ver known. \_

12

S

M

A

T

B

you said: "I wan-na see the world \_

you said: "I wan-na see the world \_ and I said: "go."

you said: "I wan-na see the world \_ and I said: "go."

ooh

ooh

ooh



C

35 "ø": like the "o" in "lost"

S  
breathe chorally  
nø nø

M  
Stran-gers rush - ing past, ——— just try - na get home, —

A  
breathe chorally  
nø nø

T  
8 breathe chorally  
nø nø

B  
breathe chorally  
nø nø

38

S  
nø nø

M  
but you were the on - ly safe ha - ven — that I've known.

A  
nø nø

T  
8 nø

B  
nø nø

41

S  
nø nø

M  
Hits me at full speed,

A  
nø nø

T  
8 nø

B  
nø nø

Lost Without You 5  
SMATB

55

S mmh dum dum dum dum dum dum døh

M I think I'm lost, \_\_\_\_\_ lost, \_\_\_\_\_ lost, \_\_\_\_\_ ooh way,

A mmh dum dum dum dum dum dum døh

T mmh dum dum dum dum dum dum døh

B mmh dum dum dum dum dum dum døh

**E** mmh dum dum dum dum dum dum døh

60

S nan

M ooh - way, \_\_\_\_\_

A nan

T nan

B dm dm dm dm dm dm dm dm dm dm

63

S nan

M ooh way, \_\_\_\_\_ ooh way, \_\_\_\_\_ oh,

A nan

T nan

B dm dm dm dm dm dm dm dm dm dm

# Lost Without You 7

SMATB

75

*rit.*

S  
nan nan nan nan nan I've been strong \_\_\_ for so long that I ne - ver thought ah ooh

M  
and I've been strong \_\_\_ for so long that I ne - ver thought how much \_\_\_ I \_\_\_ love \_\_\_ you.

A  
nan nan nan nan nan I've been strong \_\_\_ for so long that I ne - ver thought ah ooh

T  
nan nan nan nan nan I've been strong \_\_\_ for so long that I ne - ver thought ah ooh

B  
dm dm \_\_\_ dm dm dm \_\_\_ dm dm dm \_\_\_ dm dm dm \_\_\_ dm dooh

**G**

80

S  
Stan-ding on \_\_\_ the plat - form watch-ing you go, \_\_\_

M  
Stan-ding on \_\_\_ the plat - form watch-ing you go, \_\_\_

A  
Stan-ding on \_\_\_ the plat - form watch-ing you go, \_\_\_

T  
Stan-ding on \_\_\_ the plat - form watch-ing you go, \_\_\_

B  
Stan-ding on \_\_\_ the plat - form watch-ing you go, \_\_\_

85

S  
you said: "I wan-na see \_\_\_ the world \_\_\_ mmh \_\_\_

M  
you said: "I wan-na see \_\_\_ the world \_\_\_ and I said: "go."

A  
you said: "I wan-na see \_\_\_ the world \_\_\_ mmh mmh mmh

T  
you said: "I wan-na see \_\_\_ the world \_\_\_ mmh mmh mmh

B  
you said: "I wan-na see \_\_\_ the world \_\_\_ mmh mmh mmh

# Lost Without You

- Freya Ridings -

Words and Music by Freya Ridings  
Arranged by Stefan Flügel  
Original Key: Gb major

♩ = 96

**A** G D Am C G D

*p*  
Ped. Ped. Ped. Ped. Pedal sim.

Am C G D Am C G

D Am C **B** G D

Am C G D Am C

Lost Without You 3  
Piano Solo Advanced

57

D A C G D A

*mf*

Detailed description: This system contains measures 57 through 62. The key signature has one sharp (F#). The melody in the treble clef consists of eighth and quarter notes, often beamed in pairs. The bass clef provides a steady accompaniment with chords and moving lines. Chord symbols D, A, C, G, D, and A are placed above the staff. A dynamic marking of *mf* is present in measure 61.

63

C G D A C G

*mf*

Detailed description: This system contains measures 63 through 68. The melody continues with eighth and quarter notes. The bass clef accompaniment features some triplets in measure 67. Chord symbols C, G, D, A, C, and G are placed above the staff. A dynamic marking of *mf* is present in measure 63.

69

D A C G D A

*mf*

Detailed description: This system contains measures 69 through 74. The melody continues with eighth and quarter notes. The bass clef accompaniment features some triplets in measure 73. Chord symbols D, A, C, G, D, and A are placed above the staff. A dynamic marking of *mf* is present in measure 69.

75

C G D A C

*mp* *rit.*

Detailed description: This system contains measures 75 through 80. The melody continues with eighth and quarter notes. The bass clef accompaniment features some triplets in measure 79. Chord symbols C, G, D, A, and C are placed above the staff. Dynamic markings of *mp* and *rit.* are present in measures 75 and 79 respectively.

81

G D Am C G D Am C

*pp*

Detailed description: This system contains measures 81 through 86. The melody continues with eighth and quarter notes. The bass clef accompaniment features some triplets in measure 85. Chord symbols G, D, Am, C, G, D, Am, and C are placed above the staff. A dynamic marking of *pp* is present in measure 81.

# Lost Without You

- Freya Ridings -

*Words and Music by Freya Ridings  
Arranged by Stefan Flügel  
Original Key: Gb major*

♩ = 96

**A**

G D Am C



Stan-ding on the plat - form watch-ing you go,

5 G D Am C G



it's like no o-ther pain I've e-ver known. To love some-one so much

10 D Am C G D



to have no con-trol, you said: "I wan-na see the world

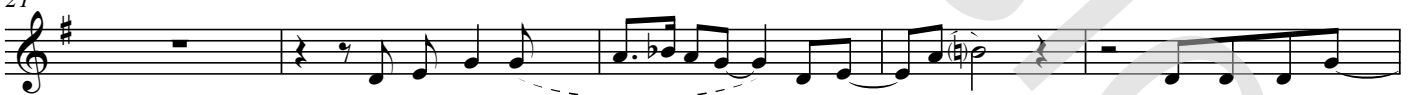
**B**

15 Am C G D Am



"go." But I think I'm lost with-out you,

21 C G D Am C



I just feel crushed with-out you. Yes, I've been strong

26 G D Am C G



for so long that I ne - ver thought how much I nee-ded you, I think I'm lost

Lost Without You 3  
Leadsheet

62 A C G D

ooh way, ooh way, oh,

66 A C G D A

ooh I think I'm lost with-out you, you,

71 C G D A C

I just feel crushed with-out you, and I've been strong

76 G D A C *rit.*

for so long that I ne-ver thought how much I love you.

81 G D Am C

Stan-ding on the plat-form watch-ing you go,

85 G D Am C

you said: "I wan-na see the world and I said: "go."

# Lost Without You

- Freya Ridings -

*Words and Music by Freya Ridings  
Arranged by Stefan Flügel  
Original Key: Gb major*

A  
Standin' on the platform  
Watching you go  
It's like no other pain  
I've ever known  
To love someone so much  
To have no control  
You said, "I wanna see the world"  
And I said, "go"

B  
But I think I'm lost without you  
I just feel crushed without you  
I've been strong for so long  
That I never thought how much I needed you  
I think I'm lost without you

C  
Strangers rushing past  
Just tryna get home  
But you were the only  
Safehaven that I've known  
Hits me at full speed  
Feel like I can't breathe  
And nobody knows  
This pain inside me  
My world is crumbling  
I should never have  
Let you go

D  
I think I'm lost without you  
I think I'm lost, lost, lost

E  
Ooh-way, ooh-way, ooh-way, ooh, ooh

F  
I think I'm lost without you, you  
I just feel crushed without you  
'Cause I've been strong for so long  
That I never thought how much I love you

G  
Standin' on the platform  
Watching you go  
You said, "I wanna see the world"  
And I said, "Go"