



Thank you for visiting ChorusOnline

We hope this demo version will be of great help for you

Choral Sheet music - Practice mp3's and Backtrack*

What do we stand for:



Legal arrangements

Artists receive a part of the price (royalties)



Quality

Our team consists of the best choir/vocal group arrangers



Speed

Choose, pay (internet) and download within 2 minutes



Price

Nowhere cheaper

* A professional Backtrack goes only with the choir-combo version



I'm in love SATB

Pag.

02	Full score combo C instrument
08	Full score combo Bb instrument
14	Full score combo Eb instrument
20	Full score combo 4 extra staves
28	Full score small combo
35	Full score small combo 2 extra staves
45	Full score vocals (SATB) piano advanced
50	Full score vocals (SATB) piano moderated
55	Vocals (SATB)
62	C instrument
63	Bb instrument
64	Eb instrument
65	Piano advanced
68	Piano moderated
71	Synthesizer
73	Guitar
75	Bassguitar
76	Drumkit
78	Leadsheet (melody, lyrics, chords)
82	Empty paper

The index numbers above are based on the original (complete) PDF-file

In this smaller DEMO-version, the numbers above do NOT match this file!!



SATB Combo C

I'm in Love

Words by M. Mena,
Music by M. Mena, A. Solvang
Arranged by Frank de Vreeze
Original Key

Popballad ♩. = 52

Intro Verse 1

Soprano
Alto
Tenor
Bass

He al - le - ged - ly fell for me through an o - pen win - dow.
He al - le - ged - ly fell for me through an o - pen win - dow.
He fell through an o - pen win - dow.
He fell through an o - pen win - dow.

C Instr.

Piano Adv.

Synthesizer

Guitar

Bass Guitar

Drum Set

p

E^b B⁷/D C^m B⁷ E^b B⁷/D C^m B⁷ E^b B⁷/D C^m B⁷

© www.ChorusOnline.com / 0031 (0) 6 - 41 57 77 56



I'm in Love 3

SATB Combo C

Verse 2

13

S I climbed u-pon hisshoul-ders and laughed un-til I cried. The view and I col-lide, to see this through his eyes. We

A and laughed un-til I cried. to see this through his eyes.

T

B

C

E⁷ B⁷/D C^m B⁷ E⁷ B⁷ C^m B⁷ E⁷ B⁷ C^m B⁷

P.A.

Synth

13

Gr. Bass D.S.

16

S ne-ver looks so ___ pret-ty, ne-ver seemed so real. I let go of my - self now, and tell him how I feel. 'cause I'm in

A ne-ver seemed so real. 'cause I'm in

T 'cause I'm in

B 'cause I'm in

C

E⁷ B⁷ C^m B⁷ A⁷ E⁷/G F^m B⁷

P.A.

Synth

16

Gr. Bass D.S.

I'm in Love 5

SATB Combo C

Chorus 3

27

S let go of my - self now, and tell him how I feel. 'cause I'm in love a - gain a - gain, and you may call me to - mor - row my friend yes. You may

A let go of my - self now, and tell him how I feel. 'cause I'm in love a - gain a - gain, and you may call me to - mor - row my friend yes. You may

T 'cause I'm in love you may call me You may

B 'cause I'm in love you may call me You may

C

P.A. A^b E^b/G F^m B^b E^b B^b/D C^m B^b E^b B^b/D C^m B^b

Synth

Gr. 27

Bass

D. S.

Chorus 4

31

S kiss me a - gain and a - gain, I'll hold on tight. I'm in love a - gain a - gain, and you may

A kiss me a - gain and a - gain, I'll hold on tight. I'm in love a - gain a - gain, and you may

T kiss me a - gain and a - gain, I'll hold on tight. I'm in love you may

B kiss me a - gain and a - gain, I'll hold on tight. I'm in love you may

C

P.A. E^b G/B C^m A^m(6) E^b/G B^b/F C^m7/E^b B^b/F E^b B^b/D C^m7 A^b(9)

Synth

Gr. 31

Bass

D. S.



SATB Combo Bb

I'm in Love

Words by M. Mena,
Music by M. Mena, A. Solvang
Arranged by Frank de Vreeze
Original Key

Popballad ♩ = 52

Intro Verse 1

Soprano
Alto
Tenor
Bass

He al - le - ged - ly fell for me through an o - pen win - dow.
He al - le - ged - ly fell for me through an o - pen win - dow.
He fell through an o - pen win - dow.
He fell through an o - pen win - dow.

Bb Instr.

p
E^b B⁷/D C^m B⁷ E^b B⁷/D C^m B⁷ E^b B⁷/D C^m B⁷

Piano Adv.

Synthesizer

Guitar

Bass Guitar

Drum Set

I'm in Love 3

SATB Combo Bb

Verse 2

Soprano (S): I climbed u-pon hisshoul-ders and laughed un-til I cried. The view and I col-lide, to see this through his eyes. We
Alto (A): and laughed un-til I cried. to see this through his eyes.
Tenor (T):
Bass (B):
Piano Accompaniment (P.A.): E^b B^b/D C^m B^b E^b B^b C^m B^b E^b B^b C^m B^b
Guitar (Gtr.):
Bass:
Double Bass (D.S.):
Soprano (S): ne-ver lookes so pret-ty, ne-ver seemed so real. I let go of my-self now, and tell him how I feel. 'cause I'm in
Alto (A): ne-ver seemed so real. 'cause I'm in
Tenor (T): 'cause I'm in
Bass (B): 'cause I'm in
Piano Accompaniment (P.A.): E^b B^b C^m B^b A^b E^b/G F^m B^b
Guitar (Gtr.):
Bass:
Double Bass (D.S.):

I'm in Love 5

SATB Combo Bb

Chorus 3

28

S feel. 'cause I'm in love a-gain a-gain, and you may call me to-mor - row my friend yes. You may kiss me a-gain and a-gain, I'll hold on

A feel. 'cause I'm in love a-gain a-gain, and you may call me to-mor - row my friend yes. You may kiss me a-gain and a-gain, I'll hold on

T 'cause I'm in love you may call me You may kiss me a-gain and a-gain, I'll hold on

B 'cause I'm in love you may call me You may kiss me a-gain and a-gain, I'll hold on

Bb

P.A. B \flat E \flat B \flat /D C m B \flat E \flat B \flat /D C m B \flat E \flat G/B C m A \flat m(6)

Synth

Gr. 28

Bass

D. S.

Chorus 4

32

S tight. I'm in love a-gain a-gain, and you may call me to-mor - row my friend yes. You may

A tight. I'm in love a-gain a-gain, and you may call me to-mor - row my friend yes. You may

T tight. I'm in love you may call me You may

B tight. I'm in love you may call me You may

Bb

P.A. E \flat /G B \flat /F C m 7/E \flat B \flat /F E \flat B \flat /D C m 7 A \flat (9) E \flat B \flat /D C m 7 A \flat (9)

Synth

Gr. 32

Bass

D. S.



SATB Combo Eb

I'm in Love

Words by M. Mena,
Music by M. Mena, A. Solvang
Arranged by Frank de Vreeze
Original Key

Popballad ♩. = 52

Intro Verse 1

Soprano
Alto
Tenor
Bass

He al - le - ged - ly fell for me through an o - pen win - dow.
He al - le - ged - ly fell for me through an o - pen win - dow.
He fell through an o - pen win - dow.
He fell through an o - pen win - dow.

E♭ Instr.

E♭ B♭/D C^m B♭ E♭ B♭/D C^m B♭ E♭ B♭/D C^m B♭

Piano Adv.

Synthesizer

Guitar

Bass Guitar

Drum Set

I'm in Love 3

SATB Combo Eb

Verse 2

13

S I climbed u-pon hisshoul-ders and laughed un-til I cried. The view and I col-lide, to see this through his eyes. We

A and laughed un-til I cried. to see this through his eyes.

T

B

Eb

P.A. E^b B^b/D C^m B^b E^b B^b C^m B^b E^b B^b C^m B^b

Synth

Gtr. 13

Bass

D. S.

16

S ne-ver looks so pret-ty, ne-ver seemed so real. I let go of my-self now, and tell him how I feel. 'cause I'm in

A ne-ver seemed so real. 'cause I'm in

T 'cause I'm in

B 'cause I'm in

Eb

P.A. E^b B^b C^m B^b A^b E^b/G F^m B^b

Synth

Gtr. 16

Bass

D. S.

I'm in Love 5

SATB Combo Eb

Chorus 3

28

S feel. 'cause I'm in love a-gain a-gain, and you may call me to-mor-row my friend yes. You may kiss me a-gain and a-gain, I'll hold on

A feel. 'cause I'm in love a-gain a-gain, and you may call me to-mor-row my friend yes. You may kiss me a-gain and a-gain, I'll hold on

T 'cause I'm in love you may call me You may kiss me a-gain and a-gain, I'll hold on

B 'cause I'm in love you may call me You may kiss me a-gain and a-gain, I'll hold on

Eb

P.A. B \flat E \flat B \flat /D C m B \flat E \flat B \flat /D C m B \flat E \flat G/B C m A \flat m(6)

Synth

28

Gtr.

Bass

D. S.

Chorus 4

32

S tight. I'm in love a-gain a-gain, and you may call me to-mor-row my friend yes. You may

A tight. I'm in love a-gain a-gain, and you may call me to-mor-row my friend yes. You may

T tight. I'm in love you may call me You may

B tight. I'm in love you may call me You may

Eb

P.A. E \flat /G B \flat /F C m 7/E \flat B \flat /F E \flat B \flat /D C m 7 A \flat (9) E \flat B \flat /D C m 7 A \flat (9)

Synth

32

Gtr.

Bass

D. S.

SATB 4 extra staves

I'm in Love

Words by M. Mena,
M. Mena, A. Solvang
Arranged by Frank de Vreeze
Original Key

Poppballad ♩ = 52
Intro

Verse 1

He al - le - ged - ly fell for me through an o - pen win - dow. Cracked his chest o - pen to re - veal — his heart. Still sleep - tic of my in - ten - tions he made me swear that

He al - le - ged - ly fell for me through an o - pen win - dow. Cracked his chest o - pen to re - veal — his heart. Still sleep - tic of my in - ten - tions he made me swear that

He fell through an o - pen win - dow. He cracked his heart. Still sleep - tic he made me swear that

He fell through an o - pen win - dow. He cracked his heart. Still sleep - tic he made me swear that

Chords: E₃ B₇/D C^m B₇ E₃ B₇/D C^m B₇ E₃ B₇/D C^m B₇ E₃ B₇/D C^m B₇ E₃ B₇/D C^m B₇ E₃ B₇/D C^m B₇ E₃ B₇/D C^m B₇ E₃ B₇/D C^m B₇

I'm in Love 3
SATB 4 extra staves

Interlude 1

Verse 2

12

S — tight —

A — tight —

T — tight —

B — tight —

1 climbed upon his shoulders and laughed un-til I cried. The view and I collide, to see this through his eyes. We never lookes so — pretty, never seemed so real. I

2 and laughed un-til I cried. to see this through his eyes. never seemed so real.

3

4

E^b B^b/D C^m B^b E^b B^b/D C^m B^b E^b B^b C^m B^b E^b B^b C^m B^b E^b B^b C^m B^b E^b B^b C^m B^b E^b B^b C^m B^b

P.A.

Synth

Gtr.

Bass

D. S.

Interlude 2

21

S
kiss me a-gain and a-gain, till hold on tight. Ooh Ooh Ooh So I

A
kiss me a-gain and a-gain, till hold on tight. Ooh Ooh Ooh So I

T
kiss me a-gain and a-gain, till hold on tight. Ooh Ooh Ooh

B
kiss me a-gain and a-gain, till hold on tight. Ooh Ooh Ooh

1
2
3
4

E_b G/B C^m A^hm(6) E_b F/E_b E_b E_b F/E_b E_b G^m C^m/G G^m G^m F/A B^b(9)

P.A.
Synth
Gtr.
Bass
D. S.

I'm in Love 7
SATB 4 extra staves

Chorus 4

Coda

S ³² tight. I'm in love again, and you may call me tomor - row my friend yes. You may kiss me a - gain, and a - gain, I'll hold on I will

A tight. I'm in love a - gain, and you may call me tomor - row my friend yes. You may kiss me a - gain, and a - gain, I'll hold on tight.

T ⁸ tight. I'm in love you may call me you may kiss me a - gain, and a - gain, I'll hold on I will

B tight. I'm in love you may call me you may kiss me a - gain, and a - gain, I'll hold on tight. I will

1

2

3

4

E^b/G B^b/F C^{m7}/E^b B^b/F E^b B^b/D C^{m7} A^b(⁹) E^b B^b/D C^{m7} A^b(⁹) E^b G/B C^m A^{nm}(⁶) E^b B^b/D C^m B^b

P.A.

Synth

Gtr. ³²

Bass

D. S.



SATB small Combo

I'm in Love

Words by M. Mena,
Music by M. Mena, A. Solvang
Arranged by Frank de Vreeze
Original Key

Popballad ♩ = 52

Intro

Verse 1

Soprano

Alto

Tenor

Bass

Piano Adv.

Guitar

Bass Guitar

Drum Set

He al - le - ged - ly fell for me through an o - pen win - dow.

He al - le - ged - ly fell for me through an o - pen win - dow.

He fell through an o - pen win - dow.

He fell through an o - pen win - dow.

E^b B^b/D C^m B^b E^b B^b/D C^m B^b E^b B^b/D C^m B^b

© www.ChorusOnline.com / 0031 (0) 6 - 41 57 77 56

I'm in Love 3

SATB small Combo

Interlude 1

11

S
kiss me a-gain and a-gain, I'll hold on tight. I

A
kiss me a-gain and a-gain, I'll hold on tight.

T
kiss me a-gain and a-gain, I'll hold on tight.

B
kiss me a-gain and a-gain, I'll hold on tight.

E^b G/B C^m A^bm(6) E^b B^b/D C^m B^b E^b B^b/D C^m B^b

P.A

Gtr.

Bass

D. S.

Verse 2

14

S
climbed u-pon his shoul-ders and laughed un-til I cried. The view and I col-lide, to see this through his eyes. We

A
and laughed un-til I cried. to see this through his eyes.

T
8

B

E^b B^b C^m B^b E^b B^b C^m B^b

P.A

Gtr.

Bass

D. S.

I'm in Love 5
SATB small Combo

Interlude 2

21

S
kiss me a-gain and a-gain, I'll hold on tight. Ooh

A
kiss me a-gain and a-gain, I'll hold on tight. Ooh

T
kiss me a-gain and a-gain, I'll hold on tight. Ooh

B
kiss me a-gain and a-gain, I'll hold on tight. Ooh

P.A
E^b G/B C^m A^m(6) E^b F/E^b E^b E^b F/E^b E^b

21

S
Ooh Ooh So I let go of my - self now, and tell him how I

A
Ooh Ooh So I let go of my - self now, and tell him how I

T
Ooh Ooh

B
Ooh Ooh

P.A
G^m C^m/G G^m G^m F/A B^b(9) A^b E^b/G F^m

24

Gtr.

Bass

D. S.

I'm in Love 7

SATB small Combo

Chorus 4

33

S love a-gain a-gain, and you may call me to-mor - row my friend yes. You may kiss me a-gain and a-gain, I'll hold on

A love a-gain a-gain, and you may call me to-mor - row my friend yes. You may kiss me a-gain and a-gain, I'll hold on

T love you may call me You may kiss me a-gain and a-gain, I'll hold on

B love you may call me You may kiss me a-gain and a-gain, I'll hold on

E^b B^b/D C^{m7} A^b(9) E^b B^b/D C^{m7} A^b(9) E^b G/B C^m A^bm(6)

P.A.

Gtr. 33

Bass

D. S.

Coda

Rit.

36

S I will hold on I will hold on tight. I hold on tight.

A tight. Hold on I hold on tight. I hold on tight.

T tight. I will hold tight.

B tight. I will hold tight I will hold on tight

E^b B^b/D C^m B^b E^b B^b/D C^m B^b E^b B^b/D C^m B^b E^b B^b/D C^m B^b

P.A.

Gtr. 36

Bass

D. S.

2 I'm in Love

SATB small Combo extra staves

Chorus 1

S skip - tic of my in - ten - tions he made me swear that I would al - ways be there, I will al - ways be here. ____ Oh I'm in love a - gain a - gain, and ____ you may

A skip - tic of my in - ten - tions he made me swear that I would al - ways be there, I will al - ways be here. ____ Oh I'm in love a - gain a - gain, and ____ you may

T skip - tic of my in - ten - tions he made me swear that I would al - ways be there, I will al - ways be here. ____ Oh I'm in love a - gain a - gain, and ____ you may

B Still skip - tic he made me swear that I would al - ways be there, I will al - ways be here. ____ Oh I'm in love a - gain a - gain, and ____ you may

1

2

E_b B₇/D C^m B₇ A^b E₇/G F^m B₇ E_b B₇/D C^m7 A₇(⁹)

P.A.

Gtr.

Bass

D. S.

4 I'm in Love

SATB small Combo extra staves

Verse 2

S climbed u-pon his shoul-ders and laughed un-til I cried. The view and I col-lide, to see this through his eyes. We ne-ver looks so ___ pret-ty, ne-ver seemed so real. I
 A and laughed un-til I cried. to see this through his eyes. ne-ver seemed so real.
 T
 B
 1
 2
 P.A.
 Gtr.
 Bass
 D. S.

Eb Bb Cm Bb Eb Bb Cm Bb Eb Bb Cm Bb Cm Bb

6 I'm in Love

SATB small Combo extra staves

Interlude 2

20

S call me to-mor - row my friend yes. You may kiss me a-gain and a-gain, Till hold on tight. Ooh

A call me to-mor - row my friend yes. You may kiss me a-gain and a-gain, Till hold on tight. Ooh

T call me _____ You may kiss me a-gain and a-gain, Till hold on tight. Ooh

B call me _____ You may kiss me a-gain and a-gain, Till hold on tight. Ooh

1

2

E \flat B \flat /D C \flat m7 A \flat (9) E \flat G/B C \flat m A \flat m(6) E \flat F/E \flat E \flat E \flat F/E \flat E \flat

P.A.

20

Gtr.

20

Bass

20

D. S.

20

8 I'm in Love

SATB small Combo extra staves

Chorus 3

29

S love a-gain a-gain, and you may call me to-mor - row my friend yes. You may kiss me a-gain and a-gain, I'll hold on

A love a-gain a-gain, and you may call me to-mor - row my friend yes. You may kiss me a-gain and a-gain, I'll hold on

T love you may call me you may kiss me a-gain and a-gain, I'll hold on

B love you may call me you may kiss me a-gain and a-gain, I'll hold on

1

2

P.A.

E^b B^b/D C^m B^b E^b B^b/D C^m B^b E^b G/B C^m A^bm(6)

Gtr.

Bass

D. S.

10 I'm in Love

SATB small Combo extra staves

Coda

Rit.

S
I ___ will hold on I will hold ___ on tight. ___

A
tight. ___ Hold on I ___ hold on tight. ___

T
tight. ___ I ___ will hold tight.

B
tight. ___ I ___ will hold tight ___ I will hold ___ on tight

1
2

P.A.
E_b B₇/D C^m B_b E_b B₇/D C^m B_b E_b B₇/D C^m B_b E_b B₇/D C^m B_b E_b B₇/D C^m B_b

Gtr.
36

Bass
36

D. S.

2 I'm in Love

SATB Piano advanced

Chorus 1

7

S I would al-ways be there, I will al-ways be here. Oh I'm in love a-gain a-gain, and you may

A I would al-ways be there, I will al-ways be here. Oh I'm in love a-gain a-gain, and you may

T I would al-ways be there, I will al-ways be here. Oh I'm in love you may

B I would al-ways be there, I will al-ways be here. Oh I'm in love you may

P.A. A^b E^b/G F^m B^b E^b B^b/D C^m7 $A^b(9)$

Interlude 1

10

S call me to-mor - row my friend yes. You may kiss me a-gain and a-gain, I'll hold on tight.

A call me to-mor - row my friend yes. You may kiss me a-gain and a-gain, I'll hold on tight.

T call me You may kiss me a-gain and a-gain, I'll hold on tight.

B call me You may kiss me a-gain and a-gain, I'll hold on tight.

P.A. E^b B^b/D C^m7 $A^b(9)$ E^b G/B C^m $A^m(6)$ E^b B^b/D C^m B^b

Verse 2

13

S I climbed u-pon his shoul-ders and laughed un-til I cried. The view and I col-hide, to see this through his eyes. We

A and laughed un-til I cried. to see this through his eyes.

T

B

P.A. E^b B^b/D C^m B^b E^b B^b C^m B^b E^b B^b C^m B^b

4 I'm in Love

SATB Piano advanced

Chorus 3

27

S let go of my - self now, and tell him how I feel. 'cause I'm in love a-gain a-gain, and you may

A let go of my - self now, and tell him how I feel. 'cause I'm in love a-gain a-gain, and you may

T - - - - - 'cause I'm in love - - - - - you may

B - - - - - 'cause I'm in love - - - - - you may

P.A. A^{\flat} E^{\flat}/G F^m B^{\flat} E^{\flat} B^{\flat}/D C^m B^{\flat}

30

S call me to-mor - row my ___ friend yes. You may kiss me a-gain and a-gain, I'll ___ hold on tight. I'm in

A call me to-mor - row my ___ friend yes. You may kiss me a-gain and a-gain, I'll ___ hold on tight. I'm in

T call me - - - - - You may kiss me a-gain and a-gain, I'll ___ hold on tight. I'm in

B call me - - - - - You may kiss me a-gain and a-gain, I'll ___ hold on tight. I'm in

P.A. E^{\flat} B^{\flat}/D C^m B^{\flat} E^{\flat} G/B C^m $A^{\flat}(6)$ E^{\flat}/G B^{\flat}/F C^m7/E^{\flat} B^{\flat}/F

Chorus 4

33

S love a-gain a-gain, and you may call me to-mor - row my ___ friend yes. You may kiss me a-gain and a-gain, I'll ___ hold on

A love a-gain a-gain, and you may call me to-mor - row my ___ friend yes. You may kiss me a-gain and a-gain, I'll ___ hold on

T love - - - - - you may call me - - - - - You may kiss me a-gain and a-gain, I'll ___ hold on

B love - - - - - you may call me - - - - - You may kiss me a-gain and a-gain, I'll ___ hold on

P.A. E^{\flat} B^{\flat}/D C^m7 $A^{\flat}(9)$ E^{\flat} B^{\flat}/D C^m7 $A^{\flat}(9)$ E^{\flat} G/B C^m $A^{\flat}(6)$

SATB Piano moderated

I'm in Love

Words by M. Mena,

Music by M. Mena, A. Solvang

Arranged by Frank de Vreeze

Original Key



Popballad ♩ = 52

Intro

Verse 1

Soprano
Alto
Tenor
Bass
Piano Mod.

He al - le-ged-ly fell for me through an o - pen win-dow.
He al - le-ged-ly fell for me through an o - pen win-dow.
He fell through an o - pen win-dow.
He fell through an o - pen win-dow.

E^b B⁷/D C^m B^b E^b B⁷/D C^m B^b E^b B⁷/D C^m B^b

S
A
T
B
P. M.

Cracked his chest o - pen to re - veal — his heart. Still skep - tic of my in - ten - tions he made me swear that
Cracked his chest o - pen to re - veal — his heart. Still skep - tic of my in - ten - tions he made me swear that
He cracked his heart. Still skep - tic he made me swear that
He cracked his heart. Still skep - tic he made me swear that

E^b B⁷/D C^m B^b E^b B⁷/D C^m B^b

I'm in Love 3
SATB Piano moderated

15

S view and I col-lide, to see this through his eyes. We ne-ver looks so pret-ty, ne-ver seemed so real. I

A to see this through his eyes. ne-ver seemed so real.

T

B

P. M

E \flat B \flat C m B \flat E \flat B \flat C m B \flat

Chorus 2

17

S let go of my - self now, and tell him how I feel. 'cause I'm in love a-gain a-gain, and you may

A 'cause I'm in love a-gain a-gain, and you may

T 'cause I'm in love you may

B 'cause I'm in love you may

P. M

A \flat E \flat /G F m B \flat E \flat B \flat /D C m A \flat

Interlude 2

20

S call me to-mor - row my friend yes. You may kiss me a-gain and a-gain, I'll hold on tight.

A call me to-mor - row my friend yes. You may kiss me a-gain and a-gain, I'll hold on tight.

T call me You may kiss me a-gain and a-gain, I'll hold on tight.

B call me You may kiss me a-gain and a-gain, I'll hold on tight.

P. M

E \flat B \flat /D C m A \flat E \flat G/B C m A \flat m(6) E \flat F/E \flat E \flat

I'm in Love 5
SATB Piano moderated

Chorus 4

33

S love a-gain a-gain, and you may call me to-mor - row my friend yes. You may kiss me a-gain and a-gain, I'll hold on

A love a-gain a-gain, and you may call me to-mor - row my friend yes. You may kiss me a-gain and a-gain, I'll hold on

T love you may call me You may kiss me a-gain and a-gain, I'll hold on

B love you may call me You may kiss me a-gain and a-gain, I'll hold on

P. M. E_b B_7/D C^m A_b E_b B_7/D C^m A_b E_b G/B C^m $A_b(m6)$

Coda

36

S I will hold on I will hold on tight.

A tight. Hold on I hold on tight.

T tight. I will hold tight.

B tight. I will hold tight. I will hold on tight

P. M. E_b B_7/D C^m B_b E_b B_7/D C^m B_b E_b B_7/D C^m B_b

Rit.

39

S I hold on tight.

A I hold on tight.

T

B

P. M. E_b B_7/D C^m B_b

2 I'm in Love
SATB

5

S Cracked his chest o - pen to re - veal _____ his heart. Still

A Cracked his chest o - pen to re - veal _____ his heart. Still

T 8 He cracked his heart.

B He cracked his heart.

6

S skep - tic of my in - ten - tions he made me swear that

A skep - tic of my in - ten - tions he made me swear that

T 8 Still skep - tic he made me swear that

B Still skep - tic he made me swear that

7

S I would al - ways be there, I will al - ways be here. _____ Oh I'm in

A I would al - ways be there, I will al - ways be here. _____ Oh I'm in

T 8 I would al - ways be there, I will al - ways be here. Oh I'm in

B I would al - ways be there, I will al - ways be here. _____ Oh I'm in

4 I'm in Love

SATB

16

S ne - ver looks so _____ pret - ty, ne - ver seemed so real. I

A ne - ver seemed so real.

17

S let go of my - self now, and tell him how I feel. 'cause I'm in

A 'cause I'm in

T 'cause I'm in

B 'cause I'm in

Chorus 2

19

S love a-gain a-gain, and _____ you may call me to-mor - row my _____ friend yes. You may

A love a-gain a-gain, and _____ you may call me to-mor - row my _____ friend yes. You may

T love _____ you may call me _____ You may

B love _____ you may call me _____ You may

6 I'm in Love

SATB

Chorus 3

29

S love a-gain a-gain, and you may call me to-mor - row my friend yes. You may

A love a-gain a-gain, and you may call me to-mor - row my friend yes. You may

T love you may call me You may

B love you may call me You may

31

S kiss me a-gain and a-gain, I'll hold on tight. I'm in

A kiss me a-gain and a-gain, I'll hold on tight. I'm in

T kiss me a-gain and a-gain, I'll hold on tight. I'm in

B kiss me a-gain and a-gain, I'll hold on tight. I'm in

Chorus 4

33

S love a-gain a-gain, and you may call me to-mor - row my friend yes. You may

A love a-gain a-gain, and you may call me to-mor - row my friend yes. You may

T love you may call me You may

B love you may call me You may



C Instrument

I'm in Love

Words by M. Mena,
Music by M. Mena, A. Solvang
Arranged by Frank de Vreeze
Original Key

Popballad ♩. = 52

Intro

Chorus 1

Interlude 1

Verse 2

Chorus 2

Interlude 2

Chorus 4

Coda

Rit.

© www.ChorusOnline.com / 0031 (0) 6 - 41 57 77 56



E♭ Instrument

I'm in Love

Words by M. Mena,
Music by M. Mena, A. Solvang
Arranged by Frank de Vreeze
Original Key

Popballad ♩ = 52

Intro

Chorus 1

Interlude 1

Verse 2

Chorus 2

Interlude 2

Chorus 3

Chorus 4

Coda

Rit.

© www.ChorusOnline.com / 0031 (0) 6 - 41 57 77 56

2 I'm in Love
Piano Advanced

Interlude 1

Verse 2

12 E \flat B \flat /D C m B \flat E \flat B \flat /D C m B \flat E \flat B \flat C m B \flat

15 E \flat B \flat C m B \flat E \flat B \flat C m B \flat A \flat E \flat /G F m

Chorus 2

18 B \flat E \flat B \flat /D C m7 A $\flat^{(9)}$ E \flat B \flat /D C m7 A $\flat^{(9)}$

Interlude 2

21 E \flat G/B C m A $\flat m(6)$ E \flat F/E \flat E \flat

23 E \flat F/E \flat E \flat G m C m /G G m G m F/A B $\flat^{(9)}$



Piano Moderated

I'm in Love

Words by M. Mena,
Music by M. Mena, A. Solvang
Arranged by Frank de Vreeze
Original Key

Popballad ♩ = 52

Intro

E \flat B \flat /D C m B \flat E \flat B \flat /D C m B \flat

E \flat B \flat /D C m B \flat E \flat B \flat /D C m B \flat E \flat B \flat /D C m B \flat

Chorus 1

A \flat E \flat /G F m B \flat E \flat B \flat /D C m A \flat

Interlude 1

E \flat B \flat /D C m A \flat E \flat G/B C m A \flat m(6) E \flat B \flat /D C m B \flat

Chorus 3

29 *8va*
E \flat B \flat /D C m B \flat E \flat B \flat /D C m B \flat E \flat G/B C m A \flat m(6)

Chorus 4

32 E \flat /G B \flat /F C m 7/E \flat B \flat /F E \flat B \flat /D C m A \flat E \flat B \flat /D C m A \flat

Coda

35 E \flat G/B C m A \flat m(6) E \flat B \flat /D C m B \flat E \flat B \flat /D C m B \flat

Rit.

38 E \flat B \flat /D C m B \flat E \flat B \flat /D C m B \flat

2 I'm in Love
Synthesizer

27 *Chorus 3* *Chorus 4*

3/8

34 *Coda*

38 *Rit.*

pp

2 I'm in Love

Guitar

Interlude 2

E^b F/E^b E^b E^b F/E^b E^b G^m C^m/G G^m

22

G^m F/A B^b(9) A^b E^b F^m B^b

25

Chorus 3

E^b G/B C^m A^b^m E^b B^b/DC^m7 A^b E^b B^b/DC^m7 A^b

31

Chorus 4

E^b G/B C^m A^b^m E^b B^b/D C^m B^b E^b B^b/D C^m B^b

35

Coda

E^b B^b/D C^m B^b E^b B^b/D C^m B^b

38

Rit.

I'm in Love

Words by M. Mena,
Music by M. Mena, A. Solvang
Arranged by Frank de Vreeze
Original Key

Hi-Hat Pedal
Hi-Hat opened
Hi-Hat Closed

Snaredrum
Bassdrum
Snare rim (click)

Toms: High 1
High 2
Mid
Low

Ride heavy
Ride light
Ride cup

Cymbal Crash
Cymbal Splash

Triangle Open
Triangle Closed

Claves
Conga High
Conga Low

Quiro
Tambourine

Shakers (Maracas)
Bells

Popballad ♩. = 52

Intro

Chorus 1

Interlude 1

Verse 2

I'm in Love



Words by M. Mena,
 Music by M. Mena, A. Solvang
 Arranged by Frank de Vreeze
 Original Key

Popballad ♩ = 52

Intro

E^b B^b/D C^m B^b E^b B^b/D C^m B^b



He al-

Verse 1

E^b B^b/D C^m B^b



- le - ged - ly fell for me through an o - pen win - dow.

E^b B^b/D C^m B^b



Cracked his chest o - pen to re - veal his heart. Still

E^b B^b/D C^m B^b



skep - tic of my in - ten - tions he made me swear that

A^b E^b/G F^m B^b



I would al-ways be there, I will al-ways be here. Oh I'm in

Chorus 1

E^b B^b/D C^{m7} A^{b(9)}



love a - gain a - gain, and you may

20 E_b B_b/D Cm^7 $A_b^{(9)}$

call me to - mor - row my _____ friend yes. You may

Interlude 2

21 E_b G/B Cm $A_bm(6)$ E_b F/E_b E_b

kiss me a - gain and a - gain, I'll _____ hold on tight. _____

23 E_b F/E_b E_b G^m Cm/G G^m G^m $F/AB_b^{(9)}$

So I

27 A_b E_b/G F^m B_b

let go of my - self now, and tell him how I feel. 'cause I'm in

Chorus 3

29 E_b B_b/D Cm B_b E_b B_b/D Cm B_b

love a-gain a-gain, and _____ you may call me to-mor - row my _____ friend yes. You may

31 E_b G/B Cm $A_bm(6)$ E_b/G B_b/F Cm^7/E_b B_b/F

kiss me a-gain and a-gain, I'll _____ hold on tight. I'm in

Chorus 4

33 E_b B_b/D Cm^7 $A_b^{(9)}$

love a - gain a - gain, and _____ you may



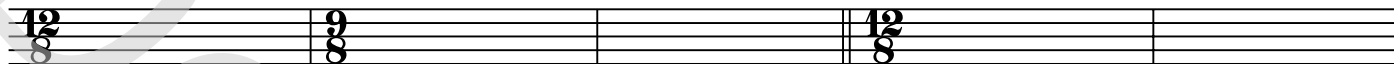
Empty paper

I'm in Love

Words by M. Mena,
Music by M. Mena, A. Solvang
Arranged by Frank de Vreeze
Original Key

Popballad ♩ = 52

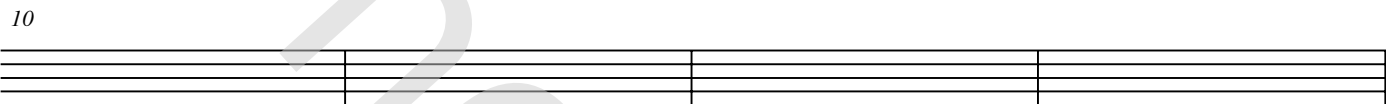
Intro



Chorus 1



Interlude 1



Verse 2



Chorus 2



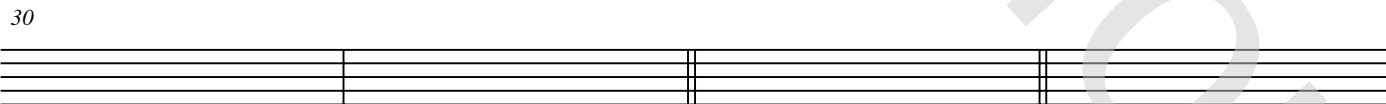
Interlude 2



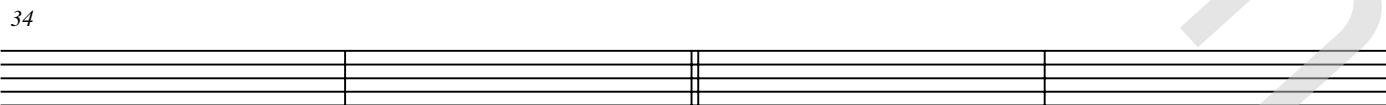
Chorus 3



Chorus 4



Coda



Rit.

