



Mad World SSAA

Pag.

- 02 Full score vocals (SSAA) piano
- 07 Vocals (SSAA)
- 12 Piano
- 15 Leadsheet in D minor (melody, lyrics, chords)
- 18 Leadsheet in F minor (melody, lyrics, chords) orig. key
- 21 Empty paper
- 23 Lyrics



SSAA Piano

Mad World

Words and Music by R. Orzabal
Arranged by Peter van Lonkhuijsen
Original key Fmin, arranged in Dmin

Popballad ♩ = 87

Intro *Verse 1*

Soprano 1 *p* All a - round me are fa -

Soprano 2 *p* All a - round me are fa -

Alto 1 *p* All a - round me are fa -

Alto 2 *p* All a - round me are fa -

Piano Adv. *mp* Dm G Dm G Dm

S 1 mi - liar fa - ces worn out pla - ces, worn out fa - ces — Bright and ear - ly for their dail - y ra - ces,

S 2 mi - liar fa - ces worn out pla - ces, worn out fa - ces — Bright and ear - ly for their dail - y ra - ces,

A 1 mi - liar fa - ces worn out pla - ces, worn out fa - ces — Bright and ear - ly for their dail - y ra - ces,

A 2 mi - liar fa - ces worn out pla - ces, worn out fa - ces — Bright and ear - ly for their dail - y ra - ces,

P.A. F C G Dm F

© www.ChorusOnline.com / 0031 (0) 6 - 41 57 77 56



Mad world 5
SSAA Piano

54

S 1

S 2

A 1

A 2

P.A

ver - y ver - y ver - y mad world,

mad world mad world mad world mad world mad world

mad world mad world mad world mad world ver - y ver - y

Dm G Dm G Dm

59

S 1

S 2

A 1

A 2

P.A

ver - y ver - y ver - y mad world

mad world mad world mad world mad world

ver - y mad world, ver - y ver - y ver - y mad world, ver - y ver - y

mad world mad world mad world mad world

G Dm G Dm

63

S 1

S 2

A 1

A 2

P.A

ver - y ver - y ver - y mad world

mad world mad world mad world mad world mad world

ver - y mad world, ver - y ver - y ver - y mad world, mad world

mad world mad world mad world mad world mad world

G Dm G Dm G

SSAA

Mad World



Words and Music by R. Orzabal
Arranged by Peter van Lonkhuijsen
Original key Fmin, arranged in Dmin

Popballad ♩ = 87

Intro Verse 1

4

Soprano 1
p All a-round me are fa - mi-liar fa - ces worn out pla - ces,

Soprano 2
p All a-round me are fa - mi-liar fa - ces worn out pla - ces,

Alto 1
p All a-round me are fa - mi-liar fa - ces worn out pla - ces,

Alto 2
p All a-round me are fa - mi-liar fa - ces worn out pla - ces,

8

S 1
worn out fa - ces — Bright and ear-ly for their dail-y ra - ces, go-ing no - where,

S 2
worn out fa - ces — Bright and ear-ly for their dail-y ra - ces, go-ing no - where,

A 1
worn out fa - ces Bright and ear-ly for their dail-y ra - ces, go-ing no - where,

A 2
worn out fa - ces Bright and ear-ly for their dail-y ra - ces, go-ing no - where,

24

S 1
dy - ing hard to tell you

S 2
dy - ing are the best I've e - ver had. I find it hard to tell you I find it hard to

A 1
dy - ing had find tell you

A 2
dy - ing had, I tell you

27

S 1
run in cir - cles ver - y ver - y ver - y mad world, ___ ver -

S 2
take, when peop - le run in cir - cles it's a ver - y ver - y mad world ___ ver -

A 1
take peop - le cir - cles it's a ver - y ver - y mad world ___

A 2
take, when cir - cles it's a ver - y ver - y mad world ___

31

To Coda ☉ **Verse 2**

S 1
- y ver - y ver - y mad world ___ mad day ___

S 2
- y ver - y ver - y mad world ___ Oo ___ mad day

A 1
mad world ___ Child - ren wait - ing for the day they feel ___ good:

A 2
mad world ___ Child - ren wait - ing for the day they feel ___ good:



Piano

Mad World

Words and Music by R. Orzabal
Arranged by Peter van Lonkhuijsen
Original key Fmin, arranged in Dmin

Intro

Dm G Dm G

mp

Verse 1

5 Dm F C G Dm F

11 C G Dm F C G

17 Dm F C G Dm

© www.ChorusOnline.com / 0031 (0) 6 - 41 57 77 56

⊕ *Coda*

The musical score for the Coda section consists of three systems of piano accompaniment. Each system is written for a grand staff (treble and bass clefs). The first system starts at measure 50 and contains six measures with a chord progression of Dm, G, Dm, G, Dm, G. The second system starts at measure 56 and also contains six measures with the same chord progression. The third system starts at measure 62 and contains six measures with the same chord progression, ending with a double bar line. The bass line in all systems consists of simple chords and single notes, while the treble line features chords with eighth-note patterns.

Mad World

Words and Music by R. Orzabal
Arranged by Peter van Lonkhuijsen
D mineur

Popballad ♩ = 87

Dm G Dm G

mp

Verse 1

5 Dm F C G

mp All a-round me are fa - mi-liar fa - ces worn out pla - ces, worn out fa - ces__

9 Dm F C G

Bright and ear-ly for their dail-y ra - ces, go-ing no - where, go-ing no - where

13 Dm F C G

Their tears are fil-ling up their glas - ses, no ex-pres - sion, no ex-pres - sion__

17 Dm F C G

Hide my head I want to drown my sor - row, no to-mor - row, no to-mor-row__

Chorus

21 Dm G Dm

mp And I find it kind of *mf* fun - ny, I find it kind of sad, *mp* the dreams in which I'm

Mad World



Words and Music by R. Orzabal
 Arranged by Peter van Lonkhuijsen
 Original key Fmin

Popballad ♩ = 87

Musical notation for the first line of the song, including a treble clef, key signature of two flats, and a 4/4 time signature. The melody is marked *mp*. Chords Fm, Bb, Fm, and Bb are indicated above the staff.

Verse 1

Musical notation for the first line of the verse, starting at measure 5. Chords Fm, Ab, Eb, and Bb are indicated above the staff. The melody is marked *mp*. Lyrics: All a-round me are fa - mi-liar fa - ces worn out pla - ces, worn out fa - ces__

Musical notation for the second line of the verse, starting at measure 9. Chords Fm, Ab, Eb, and Bb are indicated above the staff. Lyrics: Bright and ear-ly for their dail-y ra - ces, go-ing no - where, go-ing no - where

Musical notation for the third line of the verse, starting at measure 13. Chords Fm, Ab, Eb, and Bb are indicated above the staff. Lyrics: Their tears are fil-ling up their glas - ses, no ex-pres - sion, no ex-pres - sion__

Musical notation for the fourth line of the verse, starting at measure 17. Chords Fm, Ab, Eb, and Bb are indicated above the staff. Lyrics: Hide my head I want to drown my sor - row, no to-mor - row, no to-mor-row__

Chorus

Musical notation for the first line of the chorus, starting at measure 21. Chords Fm, Bb, and Fm are indicated above the staff. The melody is marked *mp*. Lyrics: And I find it kind of fun - ny, I find it kind of sad, *mf* the dreams in which I'm

Coda

50 Fm B \flat Fm B \flat

ver - y ver - y ver - y mad world, ___ ver - ver - y ver - y mad world ___

Detailed description: This block contains the first line of the Coda section, measures 50 to 53. The music is in a 4/4 time signature with a key signature of two flats (Bb and Eb). The melody consists of eighth and quarter notes. The lyrics are 'ver - y ver - y ver - y mad world, ___ ver - ver - y ver - y mad world ___'. Chords are indicated above the staff: Fm, Bb, Fm, and Bb.

54 Fm B \flat Fm B \flat

p mad world mad world mad world mad world

Detailed description: This block contains the second line of the Coda section, measures 54 to 57. The melody consists of dotted quarter and eighth notes. The lyrics are 'mad world mad world mad world mad world'. The dynamic marking is *p*. Chords are indicated above the staff: Fm, Bb, Fm, and Bb.

58 Fm B \flat Fm B \flat

mp ver - y ver - y ver - y mad world, ___ ver - y ver - y ver - y mad world ___

Detailed description: This block contains the third line of the Coda section, measures 58 to 61. The melody consists of eighth and quarter notes. The lyrics are 'ver - y ver - y ver - y mad world, ___ ver - y ver - y ver - y mad world ___'. The dynamic marking is *mp*. Chords are indicated above the staff: Fm, Bb, Fm, and Bb.

62 Fm B \flat Fm

ver - y ver - y ver - y mad world, ___ ver - y ver - y ver - y mad world

Detailed description: This block contains the fourth line of the Coda section, measures 62 to 64. The melody consists of eighth and quarter notes. The lyrics are 'ver - y ver - y ver - y mad world, ___ ver - y ver - y ver - y mad world'. Chords are indicated above the staff: Fm, Bb, and Fm.

65 B \flat Fm B \flat

___ ver - y ver - y *pp* mad world ___

Detailed description: This block contains the fifth and final line of the Coda section, measures 65 to 67. The melody consists of quarter and eighth notes. The lyrics are '___ ver - y ver - y *pp* mad world ___'. The dynamic marking is *pp*. Chords are indicated above the staff: Bb, Fm, and Bb.

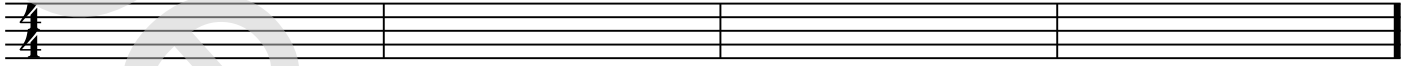


Empty Paper

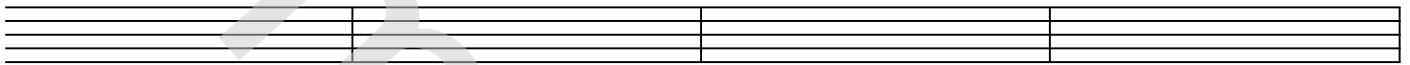
Mad World

Words and Music by R. Orzabal
Arranged by Peter van Lonkhuijsen
Original key Fmin, arranged in Dmin

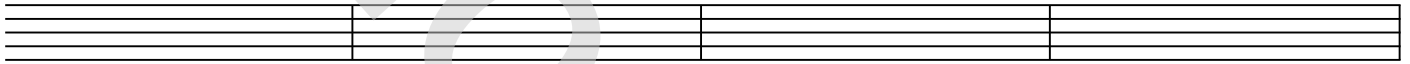
Intro



5 Verse 1



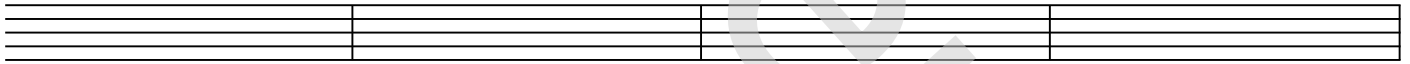
9



13

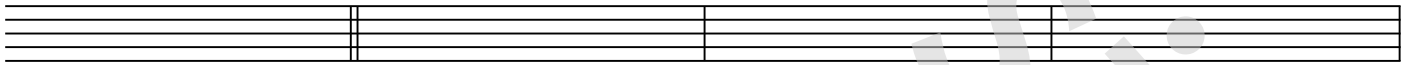


17

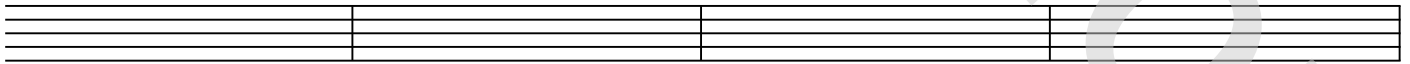


21

§ Chorus

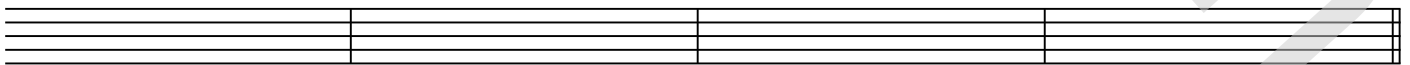


25



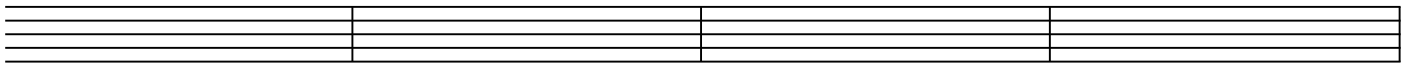
29

To Coda ⊕



Verse 2

33



Mad World

*Words and Music by R. Orzabal
Arranged by Peter van Lonkhuijsen
Original key Emin, arranged in Dmin*

All around me are familiar faces
Worn out places, worn out faces
Bright and early for the daily races
Going nowhere, going nowhere

Their tears are filling up their glasses
No expression, no expression
Hide my head I wanna drown my sorrow
No tomorrow, no tomorrow

And I find it kind of funny, I find it kind of sad
The dreams in which I'm dying are the best I've ever had
I find it hard to tell you, I find it hard to take
When people run in circles its a very, very
mad world, mad world
very, very mad world

Children waiting for the day they feel good
Happy birthday, happy birthday
Made to feel the way that every child should
Sit and listen, sit and listen

Went to school and I was very nervous
No one knew me, no one knew me
Hello teacher tell me, what's my lesson?
Look right through me, look right through me

And I find it kind of funny, I find it kind of sad
The dreams in which I'm dying are the best I've ever had
I find it hard to tell you, I find it hard to take
When people run in circles its a
very, very mad world
very, very mad world

Mad world, mad world
very, very mad world

Mad world