



## All of me – John Legend SSATB

Pag.

02	Full score vocals (SSATB) piano advanced
11	Full score vocals (SSATB) piano moderated
20	Vocals (SSATB)
30	Piano advanced
37	Piano moderated
43	Leadsheet (melody, lyrics, chords) C minor
47	Leadsheet (melody, lyrics, chords) F minor
51	Empty paper
55	Lyrics

**The index numbers above are based on the original (complete) PDF-file.  
In this smaller DEMO-version, the numbers above do NOT match this file !**

# All of Me

John Legend

Words and music by Toby Gad, John Stephens

Arranged by P. van Lonkhuijsen

Original Key F Minor

Piano Adv.

$\text{♩} = 63$

C<sub>5</sub> A<sup>b</sup> E<sup>b</sup> B<sup>b</sup><sub>5</sub> C<sub>5</sub> A<sup>b</sup> E<sup>b</sup>



Verse 1

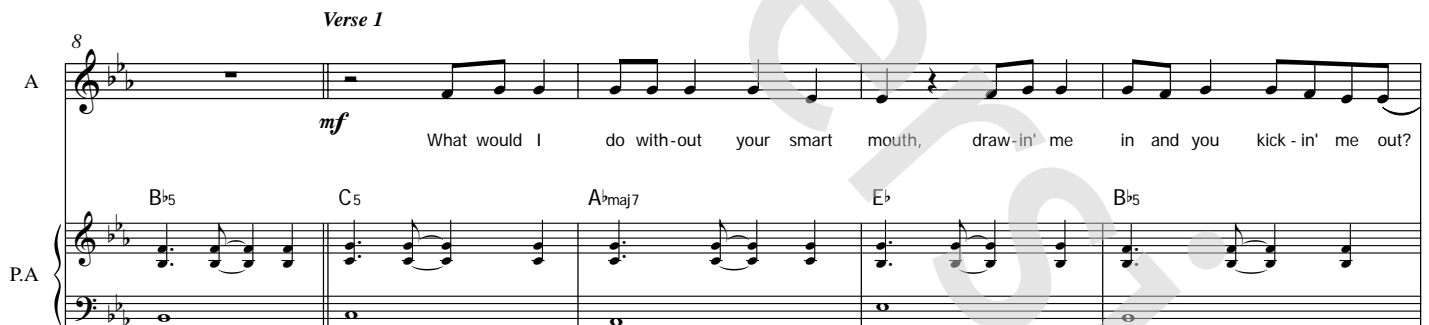
8

A

*mf* What would I do with-out your smart mouth, draw-in' me in and you kick-in' me out?

B<sup>b</sup><sub>5</sub> C<sub>5</sub> A<sup>b</sup>maj7 E<sup>b</sup> B<sup>b</sup><sub>5</sub>

P.A.



13

S

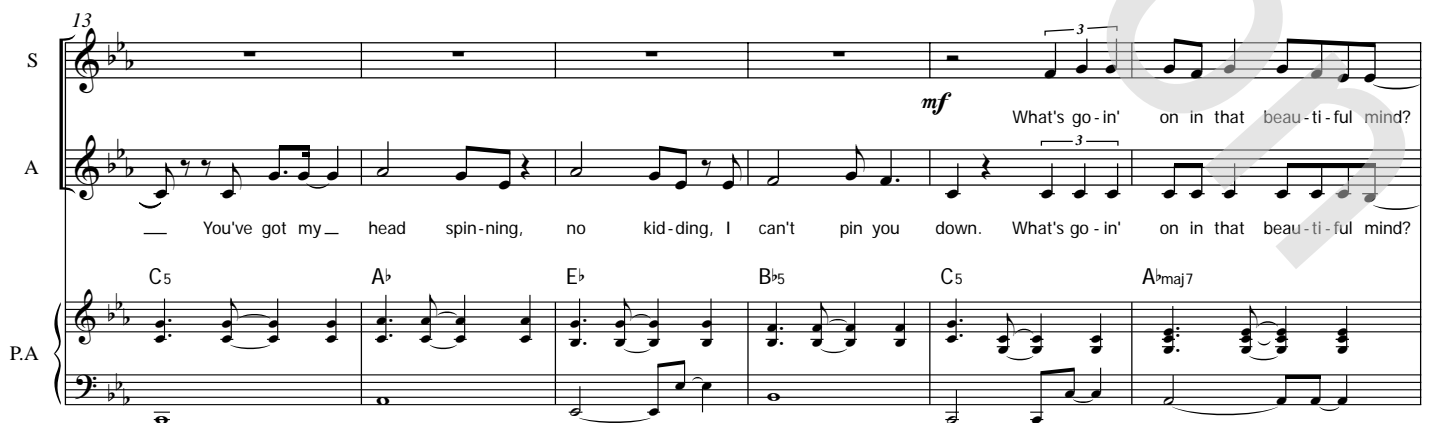
*mf* What's go-in' on in that beau-ti-ful mind?

A

— You've got my — head spin-ning, no kid-ding, I can't pin you down. What's go-in' on in that beau-ti-ful mind?

C<sub>5</sub> A<sup>b</sup> E<sup>b</sup> B<sup>b</sup><sub>5</sub> C<sub>5</sub> A<sup>b</sup>maj7

P.A.



37

S  
A  
T  
B

curves and all your edg - es, all your per - fect im - per - fec - tions. Give your all to me, — I'll give my —

P.A.

F<sup>m</sup>/A<sup>b</sup> A<sup>b</sup>/B<sup>b</sup> B<sup>b</sup> E<sup>b</sup>

43

S  
A  
T  
B

all to you, — you're my — end and my be - gin - nin', e - ven when I lose I'm win -

P.A.

C<sup>m</sup> F<sup>m</sup>/A<sup>b</sup> F<sup>m</sup>7/B<sup>b</sup>

48

S  
A  
T  
B

nin'. 'Cause I give you all \_\_\_\_\_ of me, — and you give me all

P.A.

B<sup>b</sup> C<sup>m</sup> A<sup>b</sup> E<sup>b</sup> B<sup>b</sup>9

69

S I can't stop sing - in' this ring - in' in my head for you. *mf* My head

A I can't stop sing - in' this ring - in' in my head for you. *f* My head's un - der wa -

T I can't stop sing - in' this ring - in' in my head for you. *mf* My head's un - der wa -

B I can't stop sing - in' this ring - in' in my head for you. *mf* My head

P.A. *C<sup>m</sup>* *A<sup>b</sup>* *E<sup>b</sup>* *B<sup>b</sup>* *F<sup>m9</sup>*

75

S I'm fine. You're mind 'Cause

A - - ter but, I'm breath - in' fine. You're cra - zy and I'm out of my mind. 'Cause

T - - ter but, I'm fine. You're cra - zy and I'm out of my mind. 'Cause

B I'm breath - in' fine. You're 'Cause

P.A. *E<sup>b</sup>* *B<sup>b</sup>* *F<sup>m9</sup>* *E<sup>b</sup>* *B<sup>b</sup>*

Chorus 2

81 all of me loves all of you,

A me loves all of you, love curves and all your edg - es, all your

T all of me loves all of you, love your curves and all your edg - es, all your

B all me loves all of you, love curves and all your edg - es, all your

P.A. *E<sup>b</sup>* *C<sup>m</sup>* *F<sup>m</sup>/A<sup>b</sup>*

Interlude 1

103

S Oh Give me all of you *f* Cards on the table we're both

A Oh Give me all of you *f* Cards on the table we're both

T Oh Give me all of you *f* Cards on the table we're both

B Oh Give me all of you *f* Cards on the table we're both

P.A. *f*

E $\flat$  B $\flat$ <sup>9</sup> F<sup>m</sup> E $\flat$

Chorus 3

108

S show - ing hearts. Ris - king it all though it's hard. *mp* 'Cause all of me loves

A show - ing hearts. Ris - king it all though it's hard. *mp* 'Cause all of me loves

T show - ing hearts. Ris - king it all though it's hard. *mp* 'Cause all of me loves

B show - ing hearts. Ris - king it all though it's hard. *mp* 'Cause all of me loves

P.A. *mp*

B $\flat$ <sup>9</sup> F<sup>m</sup> E $\flat$  B $\flat$  E $\flat$

115

S all of you, love your curves and all your edg - es, all your per - fect im - per - fec - tions. Give your

A all of you, love your curves and all your edg - es, all your per - fect im - per - fec - tions. Give your

T all of you, love your curves and all your edg - es, all your per - fect im - per - fec - tions. Give your

B all of you, love your curves and all your edg - es, all your per - fect im - per - fec - tions. Give your

P.A. C<sup>m</sup> F<sup>m</sup>/A $\flat$  F/B $\flat$

135

S *mp* I give you all \_\_\_\_\_ of me \_\_\_\_\_

A *p* I give you all \_\_\_\_\_ of me \_\_\_\_\_

T *mp* I give you all \_\_\_\_\_ of me \_\_\_\_\_

B *p* I give you all \_\_\_\_\_ of me \_\_\_\_\_

P.A. *E<sup>b</sup>* *B<sup>b</sup>* *C<sup>m</sup>* *A<sup>b</sup>* *E<sup>b</sup>*

140

S and you give me all \_\_\_\_\_ of you \_\_\_\_\_ oh \_\_\_\_\_

A and you give me all \_\_\_\_\_ of you \_\_\_\_\_ oh \_\_\_\_\_

T and you give me all \_\_\_\_\_ of you \_\_\_\_\_ oh \_\_\_\_\_

B and you give me all \_\_\_\_\_ of you \_\_\_\_\_ oh \_\_\_\_\_

P.A. *B<sup>b</sup>* *C<sup>m</sup>* *A<sup>b</sup>* *E<sup>b</sup>* *B<sup>b</sup>*

# All of Me

John Legend

Words and music by Toby Gad, John Stephens

Arranged by P. van Lonkhuijsen

Original Key F Minor

Piano Mod.

$\text{♩} = 63$

C<sub>5</sub> A<sup>b</sup> E<sup>b</sup> B<sup>b</sup><sub>5</sub> C<sub>5</sub> A<sup>b</sup> E<sup>b</sup>



Verse 1

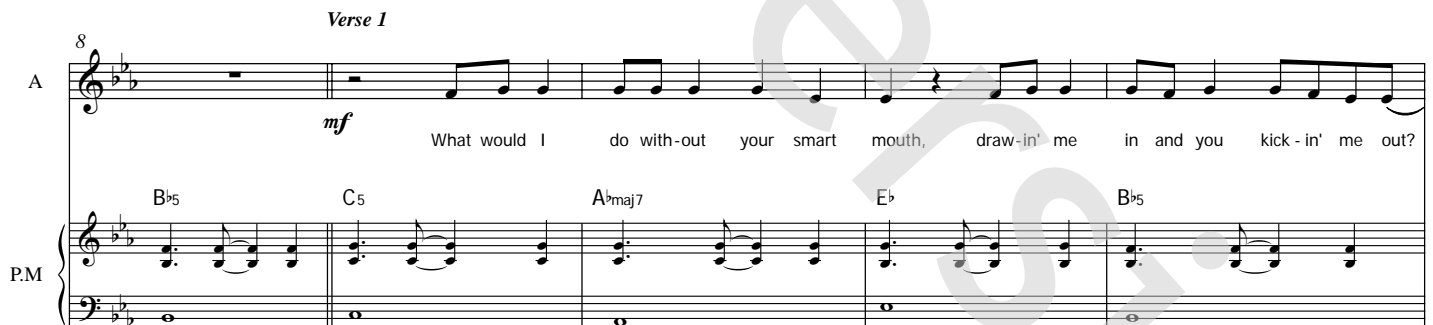
8

A

*mf* What would I do with-out your smart mouth, draw-in' me in and you kick-in' me out?

B<sup>b</sup><sub>5</sub> C<sub>5</sub> A<sup>b</sup>maj7 E<sup>b</sup> B<sup>b</sup><sub>5</sub>

P.M.



13

S

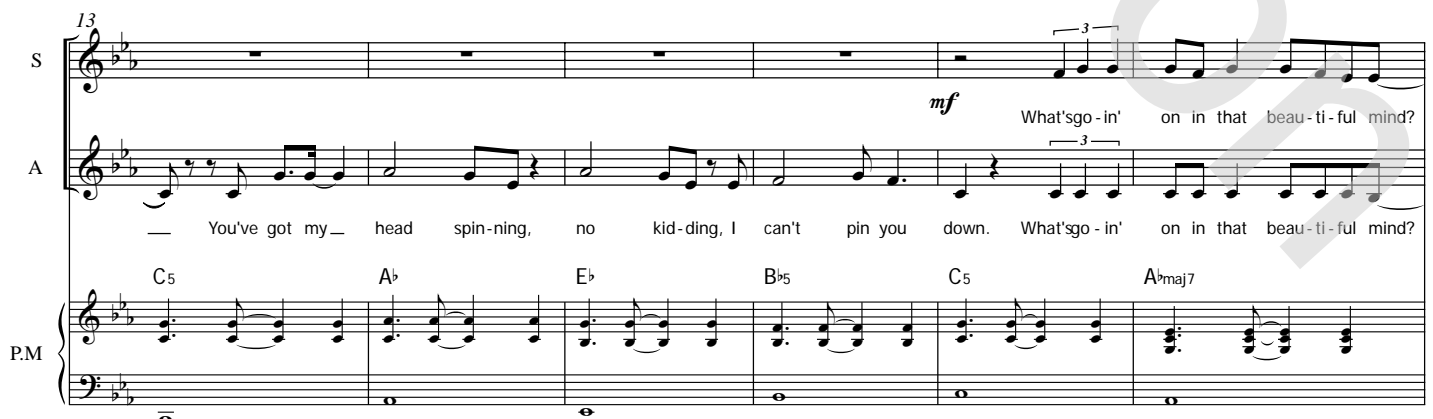
*mf* What'sgo-in' on in that beau-ti-ful mind?

A

— You've got my — head spin-ning, no kid-ding, I can't pin you down. What'sgo-in' on in that beau-ti-ful mind?

C<sub>5</sub> A<sup>b</sup> E<sup>b</sup> B<sup>b</sup><sub>5</sub> C<sub>5</sub> A<sup>b</sup>maj7

P.M.



All of Me 3  
02 SSATB Piano Moderated

37

S  
A  
T  
B

curves and all your edg - es, all your per - fect im - per - fec - tions. Give your all to me, — I'll give my —

P.M.

F<sup>m</sup>/A<sup>b</sup> A<sup>b</sup>/B<sup>b</sup> B<sup>b</sup> E<sup>b</sup>

43

S  
A  
T  
B

all to you, — you're my — end and my be - gin - nin', e - ven when I lose I'm win - nin'. 'Cause I give you all

P.M.

C<sup>m</sup> F<sup>m</sup>/A<sup>b</sup> A<sup>b</sup>/B<sup>b</sup> B<sup>b</sup>

49

S  
A  
T  
B

of me, — and you give me all of you

P.M.

C<sup>m</sup> A<sup>b</sup> E<sup>b</sup> B<sup>b</sup>9 C<sup>m</sup> A<sup>b</sup>



71

S in' in my head for you. *mf* My head I'm fine.

A in' in my head for you. *f* My head's un - der wa - ter but, I'm breath - in' fine.

T in' in my head for you. *mf* My head's un - der wa - ter but, I'm fine.

B in' in my head for you. *mf* My head I'm breath - in' fine.

P.M. *E♭ B♭ F<sup>m9</sup> E♭ B♭*

77

S You're mind me loves 'Cause all of me loves

A You're cra - zy and I'm out of my mind. 'Cause all of me loves

T You're cra - zy and I'm out of my mind. 'Cause all of me loves

B You're 'Cause all me loves

P.M. *F<sup>m9</sup> E♭ B♭ E♭*

**Chorus 2**

83

S all of you, all of you, love curves and all your edg - es, all your per - fect im - per - fec - tions. Give your

A all of you, love your curves and all your edg - es, all your per - fect im - per - fec - tions. Give your

T all of you, love your curves and all your edg - es, all your per - fect im - per - fec - tions. Give your

B all of you, love curves and all your edg - es, all your per - fect im - per - fec - tions. Give your

P.M. *C<sup>m</sup> F<sup>m</sup>/A♭ A♭/B♭ B♭*

Interlude 1

103

S Oh Give me all of you *f* Cards on the ta - - ble we're both

A Oh Give me all of you *f* Cards on the ta - - ble we're both

T Oh Give me all of you *f* Cards on the ta - - ble we're both

B Oh Give me all of you *f* Cards on the ta - - ble we're both

P.M. *E<sub>b</sub>* *B<sup>9</sup>*

Chorus 3

108

S — show - ing hearts. — Ris - king it all — though it's hard. *mp* 'Cause all of me loves

A — show - ing hearts. — Ris - king it all — though it's hard. *mp* 'Cause all of me loves

T — show - ing hearts. — Ris - king it all — though it's hard. *mp* 'Cause all of me loves

B — show - ing hearts. — Ris - king it all — though it's hard. *mp* 'Cause all of me loves

P.M. *E<sub>b</sub>*

115

S all of you, love your curves and all your edg - es, all your per - fect im - per - fec - tions. Give your

A all of you, love your curves and all your edg - es, all your per - fect im - per - fec - tions. Give your

T all of you, love your curves and all your edg - es, all your per - fect im - per - fec - tions. Give your

B all of you, love your curves and all your edg - es, all your per - fect im - per - fec - tions. Give your

P.M. *C<sup>m</sup>* *F<sup>m</sup>/A<sub>b</sub>* *F/B<sub>b</sub>*

135

S *mp* I give you all \_\_\_\_\_ of me \_\_\_\_\_

A *p* I give you all \_\_\_\_\_ of me \_\_\_\_\_

T *mp* I give you all \_\_\_\_\_ of me \_\_\_\_\_

B *p* I give you all \_\_\_\_\_ of me \_\_\_\_\_

P.M. *E<sup>b</sup>* *B<sup>b</sup>* *C<sup>m</sup>* *A<sup>b</sup>* *E<sup>b</sup>*

140

S and you give me all \_\_\_\_\_ of you \_\_\_\_\_ oh \_\_\_\_\_

A and you give me all \_\_\_\_\_ of you \_\_\_\_\_ oh \_\_\_\_\_

T and you give me all \_\_\_\_\_ of you \_\_\_\_\_ oh \_\_\_\_\_

B you give me all \_\_\_\_\_ of you \_\_\_\_\_ oh \_\_\_\_\_

P.M. *B<sup>b</sup>* *C<sup>m</sup>* *A<sup>b</sup>* *E<sup>b</sup>* *B<sup>b</sup>*



03 SSATB

# All of Me

John Legend

Words and music by Toby Gad, John Stephens

Arranged by P. van Lonkhuijsen

Original Key F Minor

*Demio*

*Alto*  $\text{♩} = 63$  **Verse 1**

*mf* What would I do with-out your smart mouth, draw-in' me

*A* in and you kick-in' me out?— You've got my— head spin-ning, no kid-ding, I

*S* *mf* What's go-in' on in that beau-ti-ful mind?— I'm on your

*A* can't pin you down. What's go-in' on in that beau-ti-ful mind?— I'm on your

*S* mag-i-cal mys-ter-y ride,— and I'm— so diz-zy, don't know what hit me, but

*A* mag-i-cal mys-ter-y ride,— and I'm— so diz-zy, don't know what hit me, but

© www.ChorusOnline.com / 0031 (0) 6 - 41 57 77 56



38

S  
es, all your per-fect im-per-fec-tions. Give your all to me, — I'll give my —

A  
es, all your per-fect im-per-fec-tions. Give your all to me, — I'll give my —

T  
8  
es, all your per-fect im-per-fec-tions. Give your all to me, — I'll give my —

B  
es, all your per-fect im-per-fec-tions. Give your all to me, — I'll give my —

43

S  
all to you, — you're my — end and my be-gin-nin', e-ven when I lose I'm win-

A  
all to you, — you're my — end and my be-gin-nin', e-ven when I lose I'm win-

T  
8  
all to you, — you're my — end and my be-gin-nin', e-ven when I lose I'm win-

B  
all to you, — you're my — end and my be-gin-nin', e-ven when I lose I'm win-

48

S  
nin'. 'Cause I give you all \_\_\_\_\_ of me, —

A  
nin'. 'Cause I give you all \_\_\_\_\_ of me, —

T  
8  
nin'. 'Cause I give you all \_\_\_\_\_ of me, —

B  
nin'. 'Cause I give you all \_\_\_\_\_ of me, —

64

S  
Oo

A  
Oo

T  
8  
— though ev-e-ry mood. — You're my down - fall, you're my muse, — my worst dis-trac-

B  
— though ev-e-ry mood. — You're my down - fall, you're my muse, — my worst dis-trac-

68

S  
I can't stop sing - in' — this ring - in' — in my

A  
I can't stop sing - in' — this ring - in' — in my

T  
8  
- tion my rhy-thm and blues. — I can't stop sing - in' — this ring - in' — in my

B  
- tion my rhy-thm and blues. — I can't stop sing - in' — this ring - in' — in my

72

S  
— head for you. — *mf* My head — I'm

A  
— head for you. — *f* My head's un - der wa - ter — but, I'm

T  
8  
— head — for you. — *mf* My head's un - der wa - ter — but, I'm

B  
— head — for you. — *mf* My head — I'm

90 — I'll give my — all to you, — you're my...

S  
me give all to you, — you're end and my be-gin-nin', e-ven

A  
— I'll give my — all to you, — you're my — end and my be-gin-nin', e-ven

T  
8 — I'll give my — all to you, — you're my — end and my be-gin-nin', e-ven

B  
me give all to you, — you're end and my be-gin-nin', e-ven

95

S  
when I lose I'm win-nin'. 'Cause I give you all \_\_\_\_\_ of me, —

A  
when I lose I'm win-nin'. 'Cause I give you all \_\_\_\_\_ of me, —

T  
8 when I lose I'm win-nin'. 'Cause I give you all \_\_\_\_\_ of me, —

B  
when I lose I'm win-nin'. 'Cause I give you all \_\_\_\_\_ of me, —

100

S  
and you give me all \_\_\_\_\_ of you — Oh —

A  
and you give me all \_\_\_\_\_ of you — Oh —

T  
8 and you give me all \_\_\_\_\_ of you — Oh —

B  
and you give me all \_\_\_\_\_ of you — Oh —

All of Me 9  
03 SSATB

118

S  
es, all your per-fect im-per-fec-tions. Give your *mf* all to me — I'll give my —

A  
es, all your per-fect im-per-fec-tions. Give your *mf* all me give

T  
es, all your per-fect im-per-fec-tions. Give your *mf* all to me, — I'll give my —

B

123

S  
all to you, — you're my...  
all to you, — you're end and my be-gin-nin', e-ven when I lose I'm win-

A  
all to you, — you're my — end and my be-gin-nin', e-ven when I lose I'm win-

T  
all to you, — you're my — end and my be-gin-nin', e-ven when I lose I'm win-

B

128

S  
nin'. 'Cause I give you all \_\_\_\_\_ of me, —

A  
nin'. 'Cause I give you all \_\_\_\_\_ of me, —

T  
nin'. 'Cause I give you all \_\_\_\_\_ of me, —

B  
nin'. 'Cause I give you all \_\_\_\_\_ of me, —





04 Piano Advanced

# All of Me

John Legend

Words and music by Toby Gad, John Stephens

Arranged by P. van Lonkhuijsen

Original Key F Minor

$\text{♩} = 63$

C<sub>5</sub>

A<sup>b</sup>

E<sup>b</sup>

B<sup>b</sup><sub>5</sub>

C<sub>5</sub>

mf

4/4

Chords: C<sub>5</sub>, A<sup>b</sup>, E<sup>b</sup>, B<sup>b</sup><sub>5</sub>, C<sub>5</sub>

Verse 1

A<sup>b</sup>

E<sup>b</sup>

B<sup>b</sup><sub>5</sub>

C<sub>5</sub>

A<sup>b</sup>maj7

6

Chords: A<sup>b</sup>, E<sup>b</sup>, B<sup>b</sup><sub>5</sub>, C<sub>5</sub>, A<sup>b</sup>maj7

E<sup>b</sup>

B<sup>b</sup><sub>5</sub>

C<sub>5</sub>

A<sup>b</sup>

E<sup>b</sup>

11

Chords: E<sup>b</sup>, B<sup>b</sup><sub>5</sub>, C<sub>5</sub>, A<sup>b</sup>, E<sup>b</sup>

B<sup>b</sup><sub>5</sub>

C<sub>5</sub>

A<sup>b</sup>maj7

E<sup>b</sup>

B<sup>b</sup>

16

Chords: B<sup>b</sup><sub>5</sub>, C<sub>5</sub>, A<sup>b</sup>maj7, E<sup>b</sup>, B<sup>b</sup>

© www.ChorusOnline.com / 0031 (0) 6 - 41 57 77 56

43  $C^m$   $F^m/A^b$

47  $F^m7/B^b$   $B^b$   $C^m$   $A^b$

51  $E^b$   $B^b9$   $C^m$   $A^b$

55 *Verse 2*  
 $E^b$   $B^b9$   $C^m$   $A^b$   $E^b$

60  $B^b$   $C^m$   $A^b$   $E^b$   $B^b$

87  $A\flat/B\flat$   $B\flat$   $E\flat$

91  $C^m$   $F^m/A\flat$

95  $F^m7/B\flat$   $B\flat$   $C^m$   $A\flat$

99  $E\flat$   $B\flat^9$   $C^m$   $A\flat$

*Interlude 1*  
103  $E\flat$   $B\flat^9$   $F^m$   $E\flat$

133

C<sup>m</sup> A<sup>b</sup> E<sup>b</sup> B<sup>b</sup>

137

C<sup>m</sup> A<sup>b</sup> E<sup>b</sup> B<sup>b</sup> C<sup>m</sup>

142

A<sup>b</sup> E<sup>b</sup> B<sup>b</sup>



05 Piano Moderated

# All of Me

John Legend

Words and music by Toby Gad, John Stephens

Arranged by P. van Lonkhuijsen

Original Key F Minor

$\text{♩} = 63$

C<sub>5</sub>

A<sup>b</sup>

E<sup>b</sup>

B<sup>b</sup><sub>5</sub>

C<sub>5</sub>

Verse 1

A<sup>b</sup>

E<sup>b</sup>

B<sup>b</sup><sub>5</sub>

C<sub>5</sub>

A<sup>b</sup>maj7

E<sup>b</sup>

B<sup>b</sup><sub>5</sub>

C<sub>5</sub>

A<sup>b</sup>

E<sup>b</sup>

B<sup>b</sup><sub>5</sub>

C<sub>5</sub>

A<sup>b</sup>maj7

E<sup>b</sup>

B<sup>b</sup>

© www.ChorusOnline.com / 0031 (0) 6 - 41 57 77 56

45  $F^m/A^b$   $A^b/B^b$   $B^b$

49  $C^m$   $A^b$   $E^b$   $B^b9$   $C^m$

54  $A^b$   $E^b$   $B^b9$  *Verse 2*  $C^m$   $A^b$

59  $E^b$   $B^b$   $C^m$   $A^b$   $E^b$

64  $B^b$   $C^m$   $A^b$   $E^b$   $B^b$

93  $F^m/A^b$   $A^b/B^b$   $B^b$

97  $C^m$   $A^b$   $E^b$   $B^b9$   $C^m$

102  $A^b$   $E^b$   $B^b9$  *Interlude 1*

107

*Chorus 3*  
113  $E^b$   $C^m$   $F^m/A^b$   $F/B^b$

# All of Me

John Legend

Words and music by Toby Gad, John Stephens

Arranged by P. van Lonkhuijsen

Original Key F Minor

♩ = 63

C<sup>5</sup> A<sup>b</sup> E<sup>b</sup> B<sup>b5</sup> C<sup>5</sup> A<sup>b</sup> E<sup>b</sup> B<sup>b5</sup>

## Verse 1

C<sup>5</sup> A<sup>b</sup>maj7 E<sup>b</sup> B<sup>b5</sup>

What would I do with-out your smart mouth, draw-in' me in and you kick-in' me out?

C<sup>5</sup> A<sup>b</sup> E<sup>b</sup> B<sup>b5</sup> C<sup>5</sup>

— You've got my— head spin-ning, no kid-ding, I can't pin you down. What's go-in'

A<sup>b</sup>maj7 E<sup>b</sup> B<sup>b</sup> C<sup>m</sup>

on in that beau-ti-ful mind?— I'm on your mag-i-cal mys-ter-y ride,— and I'm

A<sup>b</sup><sup>9</sup> E<sup>b</sup> B<sup>b</sup> F<sup>m9</sup>

so diz-zy, don't know what hit me, but I'll be al - right. My head's un - der wa-

E<sup>b</sup> B<sup>b</sup> F<sup>m9</sup>

- - ter— but, I'm— breath - in' fine.— You're— cra - zy and I'm

## Chorus 1

E<sup>b</sup> B<sup>b</sup> E<sup>b</sup> C<sup>m</sup>

— out— of my mind.— 'Cause all of me— loves all of you,



72  $B\flat$   $F\ m9$   $E\flat$

head \_\_\_ for you. \_\_\_ My head's un - der wa - ter \_\_\_ but, I'm

76  $B\flat$   $F\ m9$   $E\flat$

breath - in' fine. \_\_\_ You're \_\_\_ cra - zy and I'm \_\_\_ out \_\_\_ of my mind.

**Chorus 2**

80  $B\flat$   $E\flat$   $C\ m$

\_\_\_ 'Cause all of me \_\_\_ loves all of you, \_\_\_ love your

85  $F\ m/A\flat$   $A\flat/B\flat$   $B\flat$   $E\flat$

curves and all your edg - es, all your per - fect im - per - fec - tions. Give your all to me,

90  $C\ m$   $F\ m/A\flat$

\_\_\_ I'll give my \_\_\_ all to you, \_\_\_ you're my \_\_\_ end and my be - gin - nin', e - ven

95  $F\ m7/B\flat$   $B\flat$   $C\ m$   $A\flat$

when I lose I'm win - nin'. 'Cause I give you all \_\_\_ of me,

99  $E\flat$   $B\flat9$   $C\ m$   $A\flat$   $E\flat$

\_\_\_ and you give me all \_\_\_ of you, \_\_\_ Oh \_\_\_

**Interlude 1**

104  $B\flat9$   $F\ m$   $E\flat$

\_\_\_ Give me all \_\_\_ of you oh \_\_\_ Cards on \_\_\_ the ta - ble \_\_\_ we're both \_\_\_

# All of Me

John Legend

Words and music by Toby Gad, John Stephens

Arranged by P. van Lonkhuijsen

Original Key F Minor

♩ = 63

F<sub>5</sub> D<sup>b</sup> A<sup>b</sup> E<sup>b</sup><sub>5</sub> F<sub>5</sub> D<sup>b</sup> A<sup>b</sup> E<sup>b</sup><sub>5</sub>

## Verse 1

F<sub>5</sub> D<sup>b</sup>maj7 A<sup>b</sup> E<sup>b</sup><sub>5</sub>

What would I do with-out your smart mouth, draw-in' me in and you kick-in' me out?

F<sub>5</sub> D<sup>b</sup> A<sup>b</sup> E<sup>b</sup><sub>5</sub> F<sub>5</sub>

— You've got my — head spin-ning, no kid-ding, I can't pin you down. What's go-in'

D<sup>b</sup>maj7 A<sup>b</sup> E<sup>b</sup> F<sup>m</sup>

on in that beau-ti-ful mind? — I'm on your mag-i-cal mys-ter-y ride, — and I'm

D<sup>b</sup>9 A<sup>b</sup> E<sup>b</sup> B<sup>b</sup>m9

so diz-zy, don't know what hit me, but I'll be al - right. My head's un - der wa-

A<sup>b</sup> E<sup>b</sup> B<sup>b</sup>m9

- - ter but, I'm — breath - in' fine. — You're — cra - zy and I'm

## Chorus 1

A<sup>b</sup> E<sup>b</sup> A<sup>b</sup> F<sup>m</sup>

— out — of my mind. — 'Cause all of me — loves all of you,

69 F<sup>m</sup> D<sup>b</sup> A<sup>b</sup> E<sup>b</sup>

I can't stop sing - in' this ring - in' in my head for you.

73 B<sup>b</sup>m<sup>9</sup> A<sup>b</sup> E<sup>b</sup>

My head's un - der wa - ter but, I'm breath - in' fine.

77 B<sup>b</sup>m<sup>9</sup> A<sup>b</sup> E<sup>b</sup>

You're cra - zy and I'm out of my mind. 'Cause

**Chorus 2**

81 A<sup>b</sup> F<sup>m</sup> B<sup>b</sup>m/D<sup>b</sup>

all of me loves all of you, love your curves and all your edg -

86 D<sup>b</sup>/E<sup>b</sup> E<sup>b</sup> A<sup>b</sup>

es, all your per - fect im - per - fec - tions. Give your all to me, I'll give my

91 F<sup>m</sup> B<sup>b</sup>m/D<sup>b</sup>

all to you, you're my end and my be - gin - nin', e - ven

95 B<sup>b</sup>m<sup>7</sup>/E<sup>b</sup> E<sup>b</sup> F<sup>m</sup> D<sup>b</sup>

when I lose I'm win - nin'. 'Cause I give you all of me,

99 A<sup>b</sup> E<sup>b</sup><sup>9</sup> F<sup>m</sup> D<sup>b</sup> A<sup>b</sup>

and you give me all of you, Oh

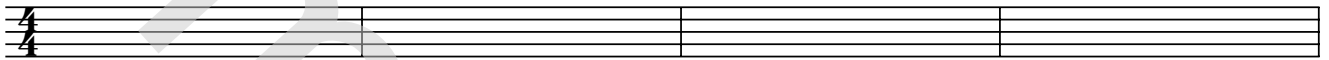


08 Empty paper

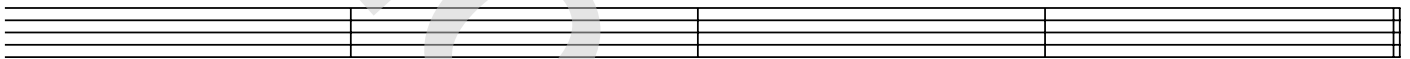
# All of Me

John Legend *Words and music by Toby Gad, John Stephens*  
*Arranged by P. van Lonkhuijsen*  
*Original Key F Minor*

$\text{♩} = 63$



5

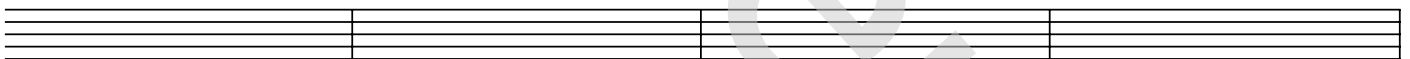


## Verse 1

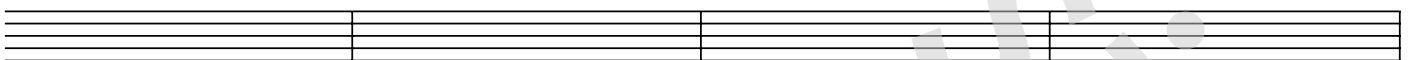
9



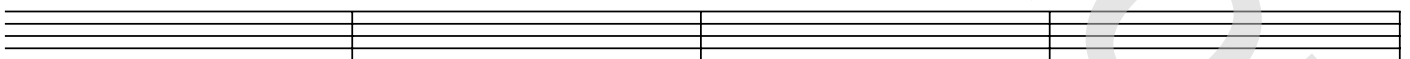
13



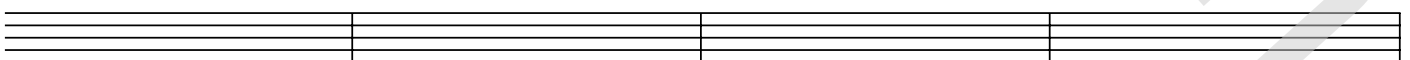
17



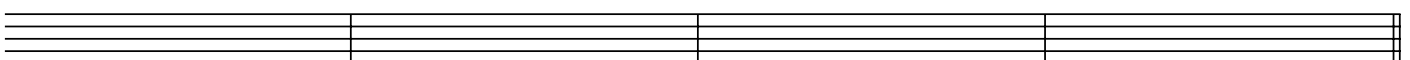
21



25

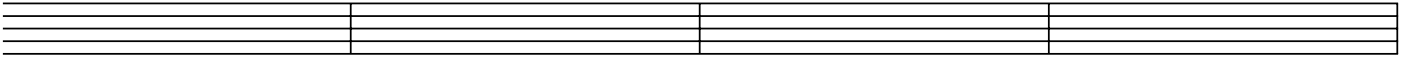


29

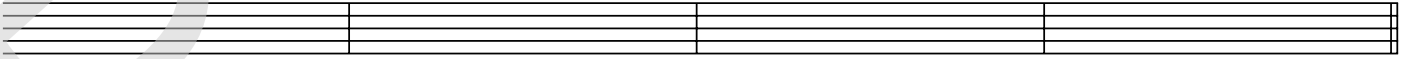


© www.ChorusOnline.com / 0031 (0) 6 - 41 57 77 56

73

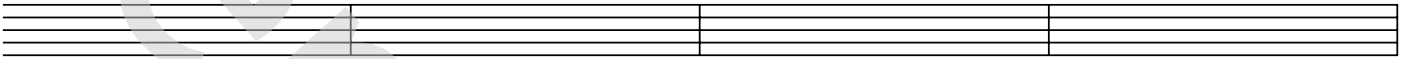


77

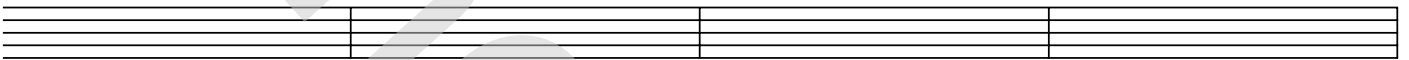


**Chorus 2**

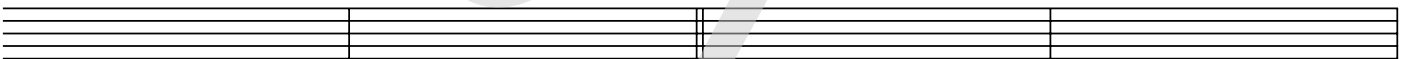
81



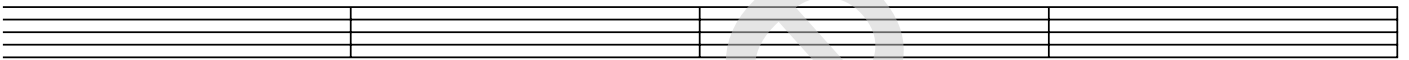
85



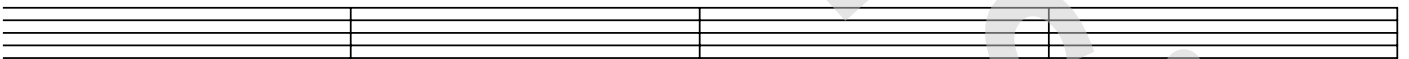
89



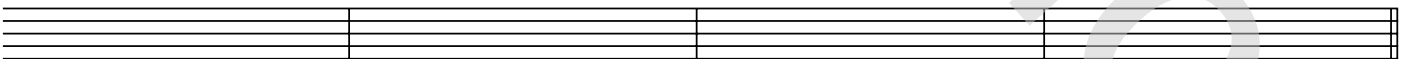
93



97

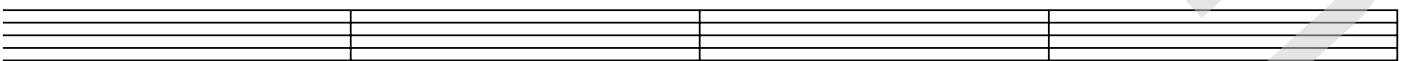


101

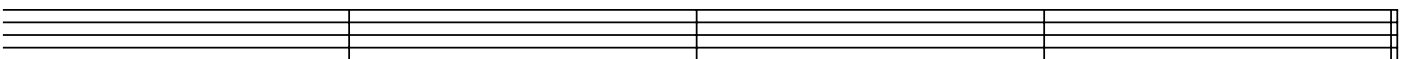


**Interlude 1**

105



109





09 Lyrics

# All of Me

*Words and music by Toby Gad, John Stephens  
Arranged by P. van Lonkhuijsen  
Original Key Fmin*

What would I do without your smart mouth, drawing me in and kicking me out?  
You've got my head spinnin', no kiddin' I can't pin you down.  
What's going on in that beautiful mind? I'm on your magical mystery ride  
And I'm so dizzy, don't know what hit me, but I'll be alright

My head's under water but I'm breathing fine  
You're crazy and I'm out of my mind

'Cause all of me loves all of you  
love your curves and all your edges, all your perfect imperfections  
Give your all to me, I'll give my all to you  
You're my end and my beginning, even when I lose I'm winning.  
'Cause I give you all of me, and you give me all of you

How many times do I have to tell you, even when you're crying you're beautiful too?  
The world is beating you down I'm around though every mood  
You're my downfall, you're my muse, my worst distraction, my rhythm and blues  
I can't stop singing this ringing in my head for you.

My head's under water but I'm breathing fine  
You're crazy and I'm out of my mind

'Cause all of me loves all of you  
love your curves and all your edges, all your perfect imperfections  
Give your all to me, I'll give my all to you  
You're my end and my beginning, even when I lose I'm winning.  
'Cause I give you all of me, and you give me all of you

Cards on the table we're both showing hearts  
Risking it all though it's hard

'Cause all of me loves all of you  
love your curves and all your edges, all your perfect imperfections  
Give your all to me, I'll give my all to you  
You're my end and my beginning, even when I lose I'm winning.  
'Cause I give you all of me, and you give me all of you  
I give you all of me, and you give me all of you