



## Turning Tables SATB

Pag.

02	Full score combo C instrument
14	Full score combo Bb instrument
26	Full score combo Eb instrument
38	Full score combo 4 extra staves
55	Full score vocals (SATB) piano advanced
68	Full score vocals (SATB) piano moderated
81	Vocals (SATB)
97	C instrument
99	Bb instrument
101	Eb instrument
103	Piano advanced
110	Piano moderated
118	Synthesizer
122	Leadsheet (melody, lyrics, chords)
126	Empty paper
131	Lyrics



01 SATB Combo C

# Turning Tables

- Adele -

Words and Music by Adele Adkins, Ryan Tedder  
Arranged by Don Henken  
Original Key

Not too slow  $\text{♩} = 76$

## Intro

Soprano

Alto

Tenor

Bass

C Instr.

Piano Adv.

Synthesizer

Chords:  $C_{m7}$ ,  $A^{b}maj9$ ,  $F_{m9}$

Performance markings:  $\text{p}$ ,  $\text{sim.}$ ,  $\text{LH}$ ,  $\text{Strings}$

© www.ChorusOnline.com / 0031 (0) 6 - 41 57 77 56

# Turning Tables 3

## Interlude 1

20

S  
All that I say, you always say more. I can't keep up with your

A  
All that I say, you always say more. I can't keep up with your

T  
Ooh I can't keep up with your

B  
Ooh I can't keep up with your

C  
*mp*

P.A.  
F<sub>m9</sub> A<sup>b</sup> A<sup>b</sup>

Synth

## Chorus 1

27

S  
turn - ing ta - bles. Un - der your thumb I can't breathe. So I won't let you

A  
turn - ing ta - bles. Un - der your thumb I can't breathe. So I won't let you

T  
turn - ing ta - bles. Un - der your thumb I can't breathe. So I won't let you

B  
turn - ing ta - bles. Un - der your thumb I can't breathe. So I won't let you

C  
*cresc.*

P.A.  
F<sub>m7</sub> A<sup>b</sup> A<sup>b</sup>(add2) B<sup>b</sup>(add2) *mf* C<sub>m7</sub> A<sup>b</sup>maj7

Synth

Turning Tables 5  
01 SATB Combo C

48

S  
bles, \_\_\_\_\_ to turn - ing ta - bles. \_\_\_\_\_

A  
bles, \_\_\_\_\_ to turn - ing ta - bles. \_\_\_\_\_

T  
bles, \_\_\_\_\_ to turn - ing ta - bles. \_\_\_\_\_

B  
bles, \_\_\_\_\_ to turn - ing ta - bles. \_\_\_\_\_

C  
*mp*  
C<sub>m7</sub> A<sup>b</sup><sub>7</sub> maj<sub>9</sub> F<sub>m9</sub> A<sup>b</sup>

P.A.  
P

Synth

Verse 3

55

S  
Un - der haunt - ed skies I see \_\_\_\_\_ you. Ooh. \_\_\_\_\_ Where love is lost

A  
Un - der haunt - ed skies I see \_\_\_\_\_ you. Ooh. \_\_\_\_\_ Where love is lost

T  
Un - der haunt - ed skies I see \_\_\_\_\_ you. Ooh. \_\_\_\_\_ Where love is lost

B  
Un - der haunt - ed skies I see \_\_\_\_\_ you. Ooh. \_\_\_\_\_ Where love is lost

C  
C<sub>m7</sub> A<sup>b</sup><sub>7</sub> maj<sub>9</sub> F<sub>m9</sub>

P.A.  
P

Synth

Turning Tables 7  
01 SATB Combo C  
Chorus 2

73

S  
— up with your turn - ing ta - bles. Un - der your thumb I can't breathe. So I won't

A  
— up with your turn - ing ta - bles. Un - der your thumb I can't breathe. So I won't

T  
— up with your turn - ing ta - bles. Un - der your thumb I can't breathe. So I won't

B  
— up with your turn - ing ta - bles. Un - der your thumb I can't breathe. So I won't

C

P.A  
F<sub>m7</sub> A<sup>b</sup> A<sup>b</sup>(add2) B<sup>b</sup>(add2) C<sub>m7</sub>

Synth

81

S  
let you close e - nough to hurt me. No, I won't ask you, you to just de - sert

A  
let you close e - nough to hurt me. No, I won't ask you, you to just de - sert

T  
let you close e - nough to hurt me. No, I won't ask you, you to just de - sert

B  
let you close e - nough to hurt me. No, I won't ask you, you to just de - sert

C

P.A  
A<sup>b</sup>maj7 E<sup>b</sup> F<sub>m</sub> C<sub>m7</sub> A<sup>b</sup>maj7 E<sup>b</sup>

Synth

Bridge

100

S  
Next time I'll be brav-er, I'll be my own sav-ior when the

A  
Next time I'll be brav-er, I'll be my own sav-ior when the

T  
Next time I'll be brav-er, I'll be my own sav-ior when the

B  
Next time I'll be brav-er, I'll be my own sav-ior when the

C  
*cresc.*  
*f*  
A<sup>b</sup> C<sub>m7</sub> A<sup>b</sup>ma<sub>9</sub> E<sup>b</sup>

P.A.  
Synth

108

S  
thun-der calls for me. Next time I'll be bra-ver, I'll be my own sav-ior,

A  
thun-der calls for me. Next time I'll be bra-ver, I'll be my own sav-ior,

T  
thun-der calls for me. Next time I'll be bra-ver, I'll be my own sav-ior,

B  
thun-der calls for me. Next time I'll be bra-ver, I'll be my own sav-ior,

C  
*8va*  
F<sub>m7</sub> C<sub>m7</sub> A<sub>maj7</sub>

P.A.  
Synth

# Turning Tables 11

01 SATB Combo C

129

S  
the heart you think you gave me. It's time to say good - bye to turn - ing ta -

A  
the heart you think you gave me. It's time to say good - bye to turn - ing ta -

T  
the heart you think you gave me. It's time to say good - bye

B  
the heart you think you gave me. It's time to say good - bye

C  
A<sup>b</sup>maj9 A<sup>b</sup> E<sup>b</sup>/G G<sup>m</sup>/B<sup>b</sup> B<sup>b</sup>sus4 F<sup>m</sup>7 E<sup>b</sup> A<sup>b</sup>(add2)

P.A.  
Synth

135

S  
- bles, to turn - ing ta - bles,

A  
- bles, to turn - ing ta - bles,

T  
turn - ing ta - bles, to turn - ing ta - bles,

B  
turn - ing ta - bles, to turn - ing ta - bles,

C  
mf C<sup>m</sup>7 A<sup>b</sup>maj9 F<sup>m</sup>9 A<sup>b</sup>

P.A.  
Synth



02 SATB Combo Bb

# Turning Tables

- Adele -

Words and Music by Adele Adkins, Ryan Tedder  
Arranged by Don Henken  
Original Key

Not too slow  $\text{♩} = 76$

### Intro

Soprano

Alto

Tenor

Bass

Bb Instr.

Piano Adv.

Synthesizer

Chords:  $C_{m7}$ ,  $A^b_{maj9}$ ,  $F_{m9}$

Performance markings:  $p$ ,  $LH$ ,  $sim.$ ,  $Strings$

© www.ChorusOnline.com / 0031 (0) 6 - 41 57 77 56





# Turning Tables 3

## Interlude 1

20

S  
All that I say, you always say more. I can't keep up with your

A  
All that I say, you always say more. I can't keep up with your

T  
Ooh I can't keep up with your

B  
Ooh I can't keep up with your

Bb

P.A.  
F<sub>m9</sub> A<sub>b</sub> *mp* A<sub>b</sub>

Synth

## Chorus 1

27

S  
turn - ing ta - bles. Un - der your thumb I can't breathe. So I won't let you

A  
turn - ing ta - bles. Un - der your thumb I can't breathe. So I won't let you

T  
turn - ing ta - bles. Un - der your thumb I can't breathe. So I won't let you

B  
turn - ing ta - bles. Un - der your thumb I can't breathe. So I won't let you

Bb  
*cresc.*

P.A.  
F<sub>m7</sub> A<sub>b</sub> A<sub>b</sub>(add2) B<sub>b</sub>(add2) *mf* C<sub>m7</sub> A<sub>b</sub>maj7

Synth

Turning Tables 5  
02 SATB Combo Bb

48

S  
bles, \_\_\_\_\_ to turn - ing ta - bles. \_\_\_\_\_

A  
bles, \_\_\_\_\_ to turn - ing ta - bles. \_\_\_\_\_

T  
bles, \_\_\_\_\_ to turn - ing ta - bles. \_\_\_\_\_

B  
bles, \_\_\_\_\_ to turn - ing ta - bles. \_\_\_\_\_

Bb  
*mp*  
C<sub>m</sub>7                      A<sup>b</sup>maj9                      F<sub>m</sub>9                      A<sup>b</sup>

P.A.  
P

Synth

Verse 3

55

S  
Un - der haunt - ed skies I see \_\_\_\_\_ you. Ooh \_\_\_\_\_ Where love is lost

A  
Un - der haunt - ed skies I see \_\_\_\_\_ you. Ooh \_\_\_\_\_ Where love is lost

T  
Un - der haunt - ed skies I see \_\_\_\_\_ you. Ooh \_\_\_\_\_ Where love is lost

B  
Un - der haunt - ed skies I see \_\_\_\_\_ you. Ooh \_\_\_\_\_ Where love is lost

Bb  
C<sub>m</sub>7                      A<sup>b</sup>maj9                      F<sub>m</sub>9

P.A.  
P

Synth

Turning Tables 7  
02 SATB Combo Bb  
Chorus 2

73

S  
— up with your turn - ing — ta - bles. Un - der your thumb I — can't breathe. So I won't

A  
— up with your turn - ing — ta - bles. Un - der your thumb I — can't breathe. So I won't

T  
— up with your turn - ing — ta - bles. Un - der your thumb I — can't breathe. So I won't

B  
— up with your turn - ing — ta - bles. Un - der your thumb I — can't breathe. So I won't

Bb

P.A  
F<sub>m7</sub> A<sup>b</sup> A<sup>b</sup>(add2) B<sup>b</sup>(add2) C<sub>m7</sub>

Synth

81

S  
let you — close e - nough to hurt — me. No, I won't ask you, you to just — de - sert

A  
let you — close e - nough to hurt — me. No, I won't ask you, you to just — de - sert

T  
let you — close e - nough to hurt — me. No, I won't ask you, you to just — de - sert

B  
let you — close e - nough to hurt — me. No, I won't ask you, you to just — de - sert

Bb

P.A  
A<sup>b</sup>maj7 E<sup>b</sup> F<sub>m</sub> C<sub>m7</sub> A<sup>b</sup>maj7 E<sup>b</sup>

Synth

Bridge

100

S  
A  
T  
B

Next time — I'll — be brav-er, I'll be — my — own sav-ior when the

Bb

*cresc.*  
*f*

A<sup>b</sup> C<sub>m7</sub> A<sup>b</sup><sub>maj9</sub> E<sup>b</sup>

P.A.  
Synth

108

S  
A  
T  
B

thun-der calls for me. Next time — I'll — be bra-ver, I'll be — my — own sav-ior,

Bb

*3* *3*

F<sub>m7</sub> C<sub>m7</sub> A<sub>maj7</sub>

P.A.  
Synth

129

S  
the heart you think you gave me. It's time to say good - bye to turn - ing ta -

A  
the heart you think you gave me. It's time to say good - bye to turn - ing ta -

T  
the heart you think you gave me. It's time to say good - bye

B  
the heart you think you gave me. It's time to say good - bye

Bb

P.A.  
*A<sup>b</sup>maj9* *A<sup>b</sup>* *E<sup>b</sup>/G* *G<sup>m</sup>/B<sup>b</sup>* *B<sup>b</sup>sus4* *F<sup>m</sup>7* *E<sup>b</sup>* *A<sup>b</sup>(add2)*

Synth

135

S  
- bles, to turn - ing ta - bles,

A  
- bles, to turn - ing ta - bles,

T  
turn - ing ta - bles, to turn - ing ta - bles,

B  
turn - ing ta - bles, to turn - ing ta - bles,

Bb

P.A.  
*mf* *C<sup>m</sup>7* *A<sup>b</sup>maj9* *F<sup>m</sup>9*

Synth



03 SATB Combo Eb

# Turning Tables

- Adele -

Words and Music by Adele Adkins, Ryan Tedder  
Arranged by Don Henken  
Original Key

Not too slow  $\text{♩} = 76$

### Intro

Soprano

Alto

Tenor

Bass

E♭ Instr.

Piano Adv.

Synthesizer

Chords: C<sub>m7</sub>, A<sup>b</sup><sub>maj9</sub>, F<sub>m9</sub>

Performance markings: *p*, *LH*, *sim.*, *Strings*

© www.ChorusOnline.com / 0031 (0) 6 - 41 57 77 56

# Turning Tables 3

## Interlude 1

20

S  
All that I say, you always say more. I can't keep up with your

A  
All that I say, you always say more. I can't keep up with your

T  
Ooh I can't keep up with your

B  
Ooh I can't keep up with your

Eb

P.A.  
F<sub>m9</sub> A<sup>b</sup> mp A<sup>b</sup>

Synth

## Chorus 1

27

S  
turn - ing ta - bles. Un - der your thumb I can't breathe. So I won't let you

A  
turn - ing ta - bles. Un - der your thumb I can't breathe. So I won't let you

T  
turn - ing ta - bles. Un - der your thumb I can't breathe. So I won't let you

B  
turn - ing ta - bles. Un - der your thumb I can't breathe. So I won't let you

Eb  
cresc.

P.A.  
F<sub>m7</sub> A<sup>b</sup> A<sup>b</sup>(add2) B<sup>b</sup>(add2) mf C<sub>m7</sub> A<sup>b</sup>ma<sub>7</sub>

Synth

Turning Tables 5  
03 SATB Combo Eb

48

S  
bles, \_\_\_\_\_ to turn-ing ta - bles. \_\_\_\_\_

A  
bles, \_\_\_\_\_ to turn-ing ta - bles. \_\_\_\_\_

T  
bles, \_\_\_\_\_ to turn-ing ta - bles. \_\_\_\_\_

B  
bles, \_\_\_\_\_ to turn-ing ta - bles. \_\_\_\_\_

Eb  
*mp*  
C<sub>m</sub>7 A<sup>b</sup>maj<sub>9</sub> F<sub>m</sub>9 A<sup>b</sup>

P.A.  
P

Synth

Verse 3

55

S  
Un - der haunt - ed skies I see \_\_\_\_\_ you. Ooh. \_\_\_\_\_ Where love is lost

A  
Un - der haunt - ed skies I see \_\_\_\_\_ you. Ooh. \_\_\_\_\_ Where love is lost

T  
Un - der haunt - ed skies I see \_\_\_\_\_ you. Ooh. \_\_\_\_\_ Where love is lost

B  
Un - der haunt - ed skies I see \_\_\_\_\_ you. Ooh. \_\_\_\_\_ Where love is lost

Eb  
C<sub>m</sub>7 A<sup>b</sup>maj<sub>9</sub> F<sub>m</sub>9

P.A.  
P

Synth



Turning Tables 7  
03 SATB Combo Eb

Chorus 2

73

S  
— up with your turn - ing ta - bles. Un - der your thumb I can't breathe. So I won't

A  
— up with your turn - ing ta - bles. Un - der your thumb I can't breathe. So I won't

T  
— up with your turn - ing ta - bles. Un - der your thumb I can't breathe. So I won't

B  
— up with your turn - ing ta - bles. Un - der your thumb I can't breathe. So I won't

Eb

P.A.  
F<sub>m7</sub> A<sup>b</sup> A<sup>b</sup>(add2) B<sup>b</sup>(add2) C<sub>m7</sub>

Synth

81

S  
let you close e - nough to hurt me. No, I won't ask you, you to just de - sert

A  
let you close e - nough to hurt me. No, I won't ask you, you to just de - sert

T  
let you close e - nough to hurt me. No, I won't ask you, you to just de - sert

B  
let you close e - nough to hurt me. No, I won't ask you, you to just de - sert

Eb

P.A.  
A<sup>b</sup>maj7 E<sup>b</sup> F<sub>m</sub> C<sub>m7</sub> A<sup>b</sup>maj7 E<sup>b</sup>

Synth

Bridge

100

S Next time I'll be brav-er, I'll be my own sav-ior when the

A Next time I'll be brav-er, I'll be my own sav-ior when the

T Next time I'll be brav-er, I'll be my own sav-ior when the

B Next time I'll be brav-er, I'll be my own sav-ior when the

E♭ *cresc.* *f*  
A♭ C<sub>m7</sub> A♭<sub>maj9</sub> E♭

P.A.

Synth

108

S thun-der calls for me. Next time I'll be bra-ver, I'll be my own sav-ior,

A thun-der calls for me. Next time I'll be bra-ver, I'll be my own sav-ior,

T thun-der calls for me. Next time I'll be bra-ver, I'll be my own sav-ior,

B thun-der calls for me. Next time I'll be bra-ver, I'll be my own sav-ior,

E♭ F<sub>m7</sub> C<sub>m7</sub> A<sub>maj7</sub>

P.A.

Synth

128

S  
— you — the heart you think — you gave — me. — It's time to say good - bye —

A  
— you — the heart you think — you gave — me. — It's time to say good - bye —

T  
— you — the heart you think — you gave — me. — It's time to say good - bye —

B  
— you — the heart you think — you gave — me. — It's time to say good - bye —

Eb

Cm7 A<sup>b</sup>maj9 A<sup>b</sup> E<sup>b</sup>/G G<sup>m</sup>/B<sup>b</sup> B<sup>b</sup>sus4 F<sup>m</sup>7 E<sup>b</sup> A<sup>b</sup>(add2)

P.A

Synth

134

S  
to turn-ing ta - bles, — to turn-ing ta - bles, —

A  
to turn-ing ta - bles, — to turn-ing ta - bles, —

T  
turn-ing ta - bles, — to turn-ing ta - bles, —

B  
turn-ing ta - bles, — to turn-ing ta - bles, —

Eb

*mf*  
Cm7 A<sup>b</sup>maj9 F<sup>m</sup>9

P.A

Synth

04 SATB 4 extra staves

# Turning Tables

- Adele -

Words and Music by Adele Adkins, Ryan Tedder  
Arranged by Don Henken  
Original Key

Not too slow  $\text{♩} = 76$

Intro

Verse 1

# Turning Tables 3

## Interlude 1

19

S  
for. All that I say, you al-ways say more. I can't keep up with your turn - ing - ta -

A  
for. All that I say, you al-ways say more. I can't keep up with your turn - ing - ta -

T  
8 Ooh Ooh I can't keep up with your turn - ing - ta -

B  
Ooh Ooh I can't keep up with your turn - ing - ta -

1  
2  
3  
4

Abmaj9 Fm9 Ab Ab Fm7

PA  
p p

Synth

38

S ask you, you to just — de- sert — me. I can't give — you — the heart you think — you gave — me. — It's time to

A ask you, you to just — de- sert — me. I can't give — you — the heart you think — you gave — me. — It's time to

T ask you, you to just — de- sert — me. I can't give — you — the heart you think — you gave — me. — It's time to

B ask you, you to just — de- sert — me. I can't give — you — the heart you think — you gave — me. — It's time to

1

2

3

4

Abmaj7 Eb Fm Cm7 Abmaj9 Ab E7/G Gm/Bb Bbsus4

PA

Synth

Verse 3

Turning Tables 7  
04 SATB 4 extra staves

5/4

S  
Un - der haunt - ed skies I see — you. Ooh — Where love is lost — your ghost was found.

A  
Un - der haunt - ed skies I see — you. Ooh — Where love is lost — your ghost was found.

T  
Un - der haunt - ed skies I see — you. Ooh — Where love is lost — your ghost was found.

B  
Un - der haunt - ed skies I see — you. Ooh — Where love is lost — your ghost was found.

1  
2  
3  
4

A<sup>b</sup> C<sup>m7</sup> A<sup>major</sup>9 F<sup>m9</sup>

PA  
Synth

Interlude 2

Turning Tables 9  
04 SATB 4 extra staves

70

S  
I can't keep up with your turn - ing ta - bles. Un - der your thumb I can't breathe. So

A  
I can't keep up with your turn - ing ta - bles. Un - der your thumb I can't breathe. So

T  
I can't keep up with your turn - ing ta - bles. Un - der your thumb I can't breathe. So

B  
I can't keep up with your turn - ing ta - bles. Un - der your thumb I can't breathe. So

1  
2  
3  
4

Ab Ab Fm7 Ab A<sup>b</sup>(add2) B<sup>b</sup>(add2)

Synth



89

S  
the heart you think — you gave — me — It's time to say good - bye —  
to turn - ing ta - bles, —

A  
the heart you think — you gave — me — It's time to say good - bye —  
to turn - ing ta - bles, —

T  
8 the heart you think — you gave — me — It's time to say good - bye —  
to turn - ing ta - bles, —

B  
the heart you think — you gave — me — It's time to say good - bye —  
to turn - ing ta - bles, —

1  
2  
3  
4

Chords: A<sup>h</sup>maj<sup>9</sup> A<sup>b</sup> E<sup>b</sup>/G G<sup>m</sup>/B<sup>b</sup> B<sup>b</sup>sus<sup>4</sup> F<sup>m</sup><sub>7</sub> E<sup>b</sup> A<sup>b</sup>(add2) C<sup>m</sup><sub>7</sub>

PA  
Synth

106

S — own sav - ior when the thun - der calls for me. — Next time — I'll — be bra - ver, I'll be — my — own sav - ior, stand - ing

A — own sav - ior when the thun - der calls for me. — Next time — I'll — be bra - ver, I'll be — my — own sav - ior, stand - ing

T — own sav - ior when the thun - der calls for me. — Next time — I'll — be bra - ver, I'll be — my — own sav - ior, stand - ing

B — own sav - ior when the thun - der calls for me. — Next time — I'll — be bra - ver, I'll be — my — own sav - ior, stand - ing

1

2

3

4

Chords: Eb, Fm7, Cm7, Amaj7, Eb

PA

Synth

125

S ask you, you to just — de-sert — me. I can't give — you — the heart you think — you gave — me. — It's time to

A ask you, you to just — de-sert — me. I can't give — you — the heart you think — you gave — me. — It's time to

T ask you, you to just — de-<sup>8</sup>sert — me. I can't give — you — the heart you think — you gave — me. — It's time to

B ask you, you to just — de-<sup>8</sup>sert — me. I can't give — you — the heart you think — you gave — me. — It's time to

1

2

3

4

Abmaj7 Eb Fm Cm7 Abmaj9 A<sup>b</sup> E/G Gm/B<sup>b</sup> B<sub>9</sub>sus4

PA

Synth

Coda

Turning Tables 17  
04 SATB 4 extra staves

142

S  
Turn - ing ta bles  
Yeah, yeah, yeah.  
Ooh  
Ooh  
rit.

A  
Turn - ing ta bles  
Yeah, yeah, yeah.  
Ooh  
Ooh

T  
Ooh  
Ooh  
Ooh  
Ooh  
Ooh  
Ooh

B  
Ooh  
Ooh  
Ooh  
Ooh  
Ooh  
Ooh

1  
2  
3  
4

Cm7  
A<sup>b</sup>maj<sup>9</sup>  
F<sup>m</sup>9  
A<sup>b</sup>  
Cm

PA  
Synth



05 SATB Piano Advanced

# Turning Tables

- Adele -

Words and Music by Adele Adkins, Ryan Tedder

Arranged by Don Henken

Original Key

Not too slow  $\text{♩} = 76$

Intro

$C_{m7}$

$A^{\flat}maj9$

$F_{m9}$

Piano  
Adv.

Musical notation for the piano introduction, featuring a treble and bass clef with a 3/4 time signature. The melody is in the treble clef, and the accompaniment is in the bass clef. Chords are indicated above the staff:  $C_{m7}$ ,  $A^{\flat}maj9$ , and  $F_{m9}$ . Performance markings include  $\text{p}$ ,  $\text{LH}$ , and  $\text{sim.}$ .

Verse 1

Musical notation for the first part of Verse 1, measures 6-11. It includes vocal staves for Soprano (S) and Alto (A), and a piano accompaniment (P.A.) staff. The lyrics are: "Close e-nough \_\_\_ to start a war. \_\_\_". Chords are indicated above the piano staff:  $A^{\flat}$ ,  $C_{m7}$ , and  $A^{\flat}maj9$ .

Musical notation for the second part of Verse 1, measures 12-17. It includes vocal staves for Soprano (S) and Alto (A), and a piano accompaniment (P.A.) staff. The lyrics are: "All that I \_\_\_ have is on the floor. \_\_\_". Chords are indicated above the piano staff:  $F_{m9}$  and  $A^{\flat}$ .

Chorus 1

28

S  
- bles. Un-der your thumb I \_\_\_\_\_ can't breathe. So I won't let you \_

A  
- bles. Un-der your thumb I \_\_\_\_\_ can't breathe. So I won't let you \_

T  
8  
- bles. Un-der your thumb I \_\_\_\_\_ can't breathe. So I won't let you \_

B  
- bles. Un-der your thumb I \_\_\_\_\_ can't breathe. So I won't let you \_

P.A  
A<sup>b</sup> A<sup>b</sup>(add2) B<sup>b</sup>(add2) C<sub>m</sub>7 A<sup>b</sup>ma<sub>7</sub>

35

S  
close e - nough to hurt \_\_\_\_\_ me. No, I won't ask you, you to just \_ de - sert

A  
close e - nough to hurt \_\_\_\_\_ me. No, I won't ask you, you to just \_ de - sert

T  
8  
close e - nough to hurt \_\_\_\_\_ me. No, I won't ask you, you to just \_ de - sert

B  
close e - nough to hurt \_\_\_\_\_ me. No, I won't ask you, you to just \_ de - sert

P.A  
E<sup>b</sup> F<sub>m</sub> C<sub>m</sub>7 A<sup>b</sup>ma<sub>7</sub> E<sup>b</sup>

Verse 3

51

S to turn-ing ta - bles. Un - der haunt-

A to turn-ing ta - bles. Un - der haunt-

T to turn-ing ta - bles. Un - der haunt-

B to turn-ing ta - bles. Un - der haunt-

P.A.  $F_{m9}$   $A^b$   $C_{m7}$

57

S - ed skies I see you. Ooh. Where love is lost your ghost was found.

A - ed skies I see you. Ooh. Where love is lost your ghost was found.

T - ed skies I see you. Ooh. Where love is lost your ghost was found.

B - ed skies I see you. Ooh. Where love is lost your ghost was found.

P.A.  $A^{b\text{maj}9}$   $F_{m9}$

Interlude 2

72

S I can't keep up with your turn - ing ta - bles. Un - der your thumb I can't breathe.

A I can't keep up with your turn - ing ta - bles. Un - der your thumb I can't breathe.

T I can't keep up with your turn - ing ta - bles. Un - der your thumb I can't breathe.

B I can't keep up with your turn - ing ta - bles. Un - der your thumb I can't breathe.

P.A.  $A^b$   $F_{m7}$   $A^b$   $A^b(add2)$   $B^b(add2)$

Chorus 2

79

S So I won't let you close e - nough to hurt me. No, I won't

A So I won't let you close e - nough to hurt me. No, I won't

T So I won't let you close e - nough to hurt me. No, I won't

B So I won't let you close e - nough to hurt me. No, I won't

P.A.  $C_{m7}$   $A^b_{maj7}$   $E^b$   $F_m$   $C_{m7}$



96

S  
turn - ing ta - bles.

A  
turn - ing ta - bles.

T  
turn - ing ta - bles.

B  
turn - ing ta - bles.

P.A  
A<sup>b</sup>maj<sub>9</sub> F<sub>m</sub><sup>9</sup> A<sup>b</sup>

Bridge

102

S  
Next time I'll be brav - er, I'll be my own sav - ior when the

A  
Next time I'll be brav - er, I'll be my own sav - ior when the

T  
Next time I'll be brav - er, I'll be my own sav - ior when the

B  
Next time I'll be brav - er, I'll be my own sav - ior when the

P.A  
C<sub>m</sub><sup>7</sup> A<sup>b</sup>maj<sub>9</sub> E<sup>b</sup>

121

S let you close e-nough to hurt me. No, I won't ask you,

A let you close e-nough to hurt me. No, I won't ask you,

T let you close e-nough to hurt me. No, I won't ask you,

B let you close e-nough to hurt me. No, I won't ask you,

P.A.  $A^{\flat}maj7$   $E^{\flat}$   $F_m$   $C_m7$   $A^{\flat}maj7$

126

S you to just de-sert me. I can't give you the heart you think you gave

A you to just de-sert me. I can't give you the heart you think you gave

T you to just de-sert me. I can't give you the heart you think you gave

B you to just de-sert me. I can't give you the heart you think you gave

P.A.  $E^{\flat}$   $F_m$   $C_m7$   $A^{\flat}maj9$   $A^{\flat}$   $E^{\flat}/G$   $G_m/B^{\flat}$

Coda

143

S ta bles Yeah, yeah, yeah. Ooh Ooh

A ta bles Yeah, yeah, yeah. Ooh Ooh

T 8 ooh ooh ooh. Ooh ooh

B ooh ooh ooh. Ooh

P.A. C<sub>m</sub>7 A<sup>b</sup>maj<sub>9</sub> F<sub>m</sub>9

148

S ooh.

A ooh.

T 8 ooh ooh.

B ooh ooh.

P.A. A<sup>b</sup> C<sub>m</sub> rit.



06 SATB Piano Moderated

# Turning Tables

- Adele -

Words and Music by Adele Adkins, Ryan Tedder  
Arranged by Don Henken  
Original Key

Not too slow  $\text{♩} = 76$

Intro

Piano Mod.

The piano introduction consists of six measures in 3/4 time. The right hand plays a steady eighth-note accompaniment, while the left hand plays a simple bass line. Chords are indicated above the staff: C<sub>m7</sub>, A<sup>b</sup><sub>maj9</sub>, and F<sub>m9</sub>.

Verse 1

S  
A  
P. M.

Verse 1 musical score for Soprano (S), Alto (A), and Piano Mod. (P. M.). The lyrics are: "Close e-nough to start a war. All that I". The piano accompaniment includes chords: A<sup>b</sup>, C<sub>m7</sub>, and A<sup>b</sup><sub>maj9</sub>. The score starts at measure 7.

S  
A  
P. M.

Verse 2 musical score for Soprano (S), Alto (A), and Piano Mod. (P. M.). The lyrics are: "have is on the floor.". The piano accompaniment includes chords: F<sub>m9</sub> and A<sup>b</sup>. The score starts at measure 13.

Chorus 1

28

S  
- bles. Un - der your thumb I \_\_\_\_\_ can't breathe. So I won't let you \_

A  
- bles. Un - der your thumb I \_\_\_\_\_ can't breathe. So I won't let you \_

T  
- bles. Un - der your thumb I \_\_\_\_\_ can't breathe. So I won't let you \_

B  
- bles. Un - der your thumb I \_\_\_\_\_ can't breathe. So I won't let you \_

P. M

A<sup>b</sup> A<sup>b</sup>(add2) B<sup>b</sup> C<sub>m</sub>7 A<sup>b</sup>ma<sub>7</sub>

35

S  
close e-nough to hurt \_\_\_\_\_ me. No, I won't ask you, you to just de-sert \_\_\_\_\_ me. I can't give

A  
close e-nough to hurt \_\_\_\_\_ me. No, I won't ask you, you to just de-sert \_\_\_\_\_ me. I can't give

T  
close e-nough to hurt \_\_\_\_\_ me. No, I won't ask you, you to just de-sert \_\_\_\_\_ me. I can't give

B  
close e-nough to hurt \_\_\_\_\_ me. No, I won't ask you, you to just de-sert \_\_\_\_\_ me. I can't give

P. M

E<sup>b</sup> F<sub>m</sub> C<sub>m</sub>7 A<sup>b</sup>ma<sub>7</sub> E<sup>b</sup> F<sub>m</sub>

Verse 3

53

S  
Un - der haunt - ed skies I see \_\_\_\_ you.

A  
Un - der haunt - ed skies I see \_\_\_\_ you.

T  
Un - der haunt - ed skies I see \_\_\_\_ you.

B  
Un - der haunt - ed skies I see \_\_\_\_ you.

P. M  
A<sup>b</sup> C<sub>m</sub>7 A<sup>b</sup>maj9

59

S  
Ooh. \_\_\_\_ Where love is lost \_\_\_\_ your ghost was found. \_\_\_\_

A  
Ooh. \_\_\_\_ Where love is lost \_\_\_\_ your ghost was found. \_\_\_\_

T  
Ooh. \_\_\_\_ Where love is lost \_\_\_\_ your ghost was found. \_\_\_\_

B  
Ooh. \_\_\_\_ Where love is lost \_\_\_\_ your ghost was found. \_\_\_\_

P. M  
F<sub>m</sub>9 A<sup>b</sup>

Chorus 2

75

S  
- bles. Un - der your thumb I \_\_\_\_\_ can't breathe. So I won't let you \_

A  
- bles. Un - der your thumb I \_\_\_\_\_ can't breathe. So I won't let you \_

T  
- bles. Un - der your thumb I \_\_\_\_\_ can't breathe. So I won't let you \_

B  
- bles. Un - der your thumb I \_\_\_\_\_ can't breathe. So I won't let you \_

P. M

A<sup>b</sup> A<sup>b</sup>(add2) B<sup>b</sup> C<sub>m</sub>7 A<sup>b</sup>maj7

82

S  
close e-nough to hurt \_\_\_\_\_ me. No, I won't ask you, you to just de-sert \_\_\_\_\_ me. I can't give

A  
close e-nough to hurt \_\_\_\_\_ me. No, I won't ask you, you to just de-sert \_\_\_\_\_ me. I can't give

T  
close e-nough to hurt \_\_\_\_\_ me. No, I won't ask you, you to just de-sert \_\_\_\_\_ me. I can't give

B  
close e-nough to hurt \_\_\_\_\_ me. No, I won't ask you, you to just de-sert \_\_\_\_\_ me. I can't give

P. M

E<sup>b</sup> F<sub>m</sub> C<sub>m</sub>7 A<sup>b</sup>maj7 E<sup>b</sup> F<sub>m</sub>

Bridge

100

S  
Next time I'll be brav-er, I'll be my own sav-ior

A  
Next time I'll be brav-er, I'll be my own sav-ior

T  
Next time I'll be brav-er, I'll be my own sav-ior

B  
Next time I'll be brav-er, I'll be my own sav-ior

P.M  
A<sup>b</sup> C<sub>m</sub>7 A<sup>b</sup>ma<sub>9</sub>

107

S  
when the thun-der calls for me. Next time I'll be bra-ver,

A  
when the thun-der calls for me. Next time I'll be bra-ver,

T  
when the thun-der calls for me. Next time I'll be bra-ver,

B  
when the thun-der calls for me. Next time I'll be bra-ver,

P.M  
E<sup>b</sup> F<sub>m</sub>7 C<sub>m</sub>7



126

S  
you to just\_ de-sert\_ me. I can't give\_ you\_ the heart you think\_ you gave

A  
you to just\_ de-sert\_ me. I can't give\_ you\_ the heart you think\_ you gave

T  
you to just\_ de-sert\_ me. I can't give\_ you\_ the heart you think\_ you gave

B  
you to just\_ de-sert\_ me. I can't give\_ you\_ the heart you think\_ you gave

P. M  
E<sup>b</sup> F<sub>m</sub> C<sub>m7</sub> A<sup>b</sup><sub>maj9</sub> A<sup>b</sup> E<sup>b</sup>/G G<sub>m</sub>/B<sup>b</sup>

131

S  
\_ me. \_ It's time to say good - bye \_ to turn-ing ta - bles, \_

A  
\_ me. \_ It's time to say good - bye \_ to turn-ing ta - bles, \_

T  
\_ me. \_ It's time to say good - bye \_ turn - ing ta - bles, \_

B  
\_ me. \_ It's time to say good - bye \_ turn - ing ta -

P. M  
B<sup>b</sup> F<sub>m7</sub> E<sup>b</sup> A<sup>b</sup>(add2) C<sub>m7</sub>

Turning Tables 13  
06 SATB Piano Moderated

148 *rit.*

S  
A  
T  
B

P. M.

oooh.  
oooh.  
oooh oooh.  
oooh oooh.

A<sup>b</sup> C<sub>m</sub>



07 SATB

# Turning Tables

- Adele -

Words and Music by Adele Adkins, Ryan Tedder  
Arranged by Don Henken  
Original Key

Not too slow  $\text{♩} = 76$

*Intro*

*Verse 1*

Soprano

Alto

Tenor

Bass

© www.ChorusOnline.com / 0031 (0) 6 - 41 57 77 56

*Interlude 1*

22

S  
you al-ways say \_\_\_ more. \_\_\_\_\_ I can't keep \_\_\_ up with your

A  
you al-ways say \_\_\_ more. \_\_\_\_\_ I can't keep \_\_\_ up with your

T  
\_\_\_\_\_ I can't keep \_\_\_ up with your

B  
\_\_\_\_\_ I can't keep \_\_\_ up with your

27

S  
turn - ing \_\_\_ ta - bles. Un - der your thumb I \_\_\_\_\_ can't breathe.

A  
turn - ing \_\_\_ ta - bles. Un - der your thumb I \_\_\_\_\_ can't breathe.

T  
turn - ing \_\_\_ ta - bles. Un - der your thumb I \_\_\_\_\_ can't breathe.

B  
turn - ing \_\_\_ ta - bles. Un - der your thumb I \_\_\_\_\_ can't breathe.

41

S  
— you — the heart you think you gave — me. — It's time to

A  
— you — the heart you think you gave — me. — It's time to

T  
8  
— you — the heart you think you gave — me. — It's time to

B  
— you — the heart you think you gave — me. — It's time to

45

S  
say good - bye — to turn-ing ta - bles, —

A  
say good - bye — to turn-ing ta - bles, —

T  
8  
say good - bye — to turn-ing ta - bles, —

B  
say good - bye — to turn-ing ta - bles, —

60

S  
Where love is lost — your ghost was found. —————

A  
Where love is lost — your ghost was found. —————

T  
Where love is lost — your ghost was found. —————

B  
Where love is lost — your ghost was found. —————

*Verse 4*

64

S  
I braved a hun - dred storms ——— to leave you. ——— As hard as you try,

A  
I braved a hun - dred storms ——— to leave you. ——— As hard as you try,

T  
I braved a hun - dred storms ——— to leave you. ——— As hard as you try,

B  
I braved a hun - dred storms ——— to leave you. ——— As hard as you try,

Chorus 2

77

S — can't breathe. So I won't let you —

A — can't breathe. So I won't let you —

T — can't breathe. So I won't let you —

B — can't breathe. So I won't let you —

82

S close e - nough to hurt \_\_\_\_\_ me. No, I won't ask you,

A close e - nough to hurt \_\_\_\_\_ me. No, I won't ask you,

T close e - nough to hurt \_\_\_\_\_ me. No, I won't ask you,

B close e - nough to hurt \_\_\_\_\_ me. No, I won't ask you,

94

S to turn - ing ta - bles, \_\_\_\_\_ turn - ing ta -

A to turn - ing ta - bles, \_\_\_\_\_ turn - ing ta -

T to turn - ing ta - bles, \_\_\_\_\_ turn - ing ta -

B to turn - ing ta - bles, \_\_\_\_\_ turn - ing ta -

*Bridge*

99

S - bles. \_\_\_\_\_ Next time I'll

A - bles. \_\_\_\_\_ Next time I'll

T - bles. \_\_\_\_\_ Next time I'll

B - bles. \_\_\_\_\_ Next time I'll



114

S  
\_own sav-ior, stand-ing on my own two feet.

A  
\_own sav-ior, stand-ing on my own two feet.

T  
\_own sav-ior, stand-ing on my own two feet.

B  
\_own sav-ior, stand-ing on my own two feet.

*Chorus 3*

119

S  
I won't let you close e-nough to hurt me. No,

A  
I won't let you close e-nough to hurt me. No,

T  
I won't let you close e-nough to hurt me. No,

B  
I won't let you close e-nough to hurt me. No,

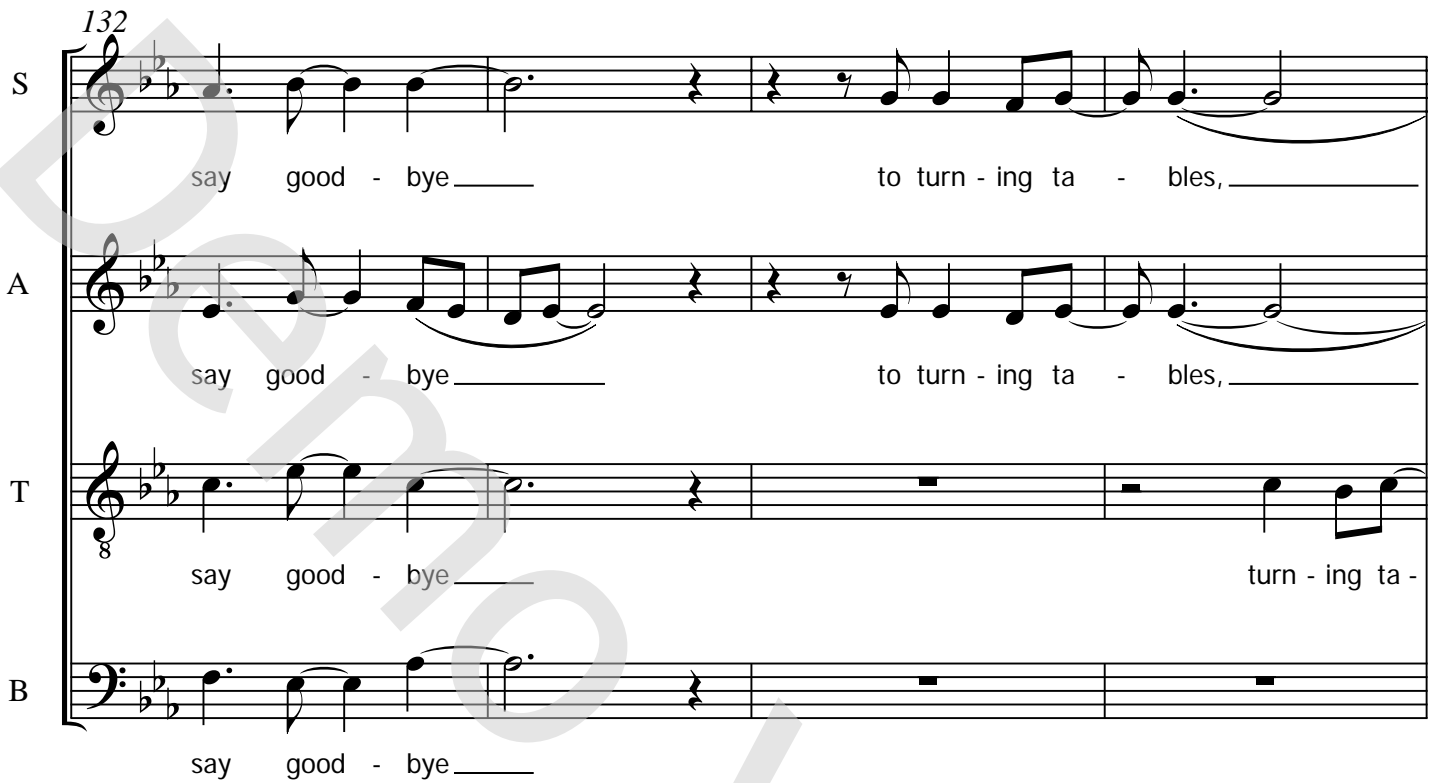
132

S  
say good - bye \_\_\_\_\_ to turn - ing ta - bles, \_\_\_\_\_

A  
say good - bye \_\_\_\_\_ to turn - ing ta - bles, \_\_\_\_\_

T  
8  
say good - bye \_\_\_\_\_ turn - ing ta -

B  
say good - bye \_\_\_\_\_



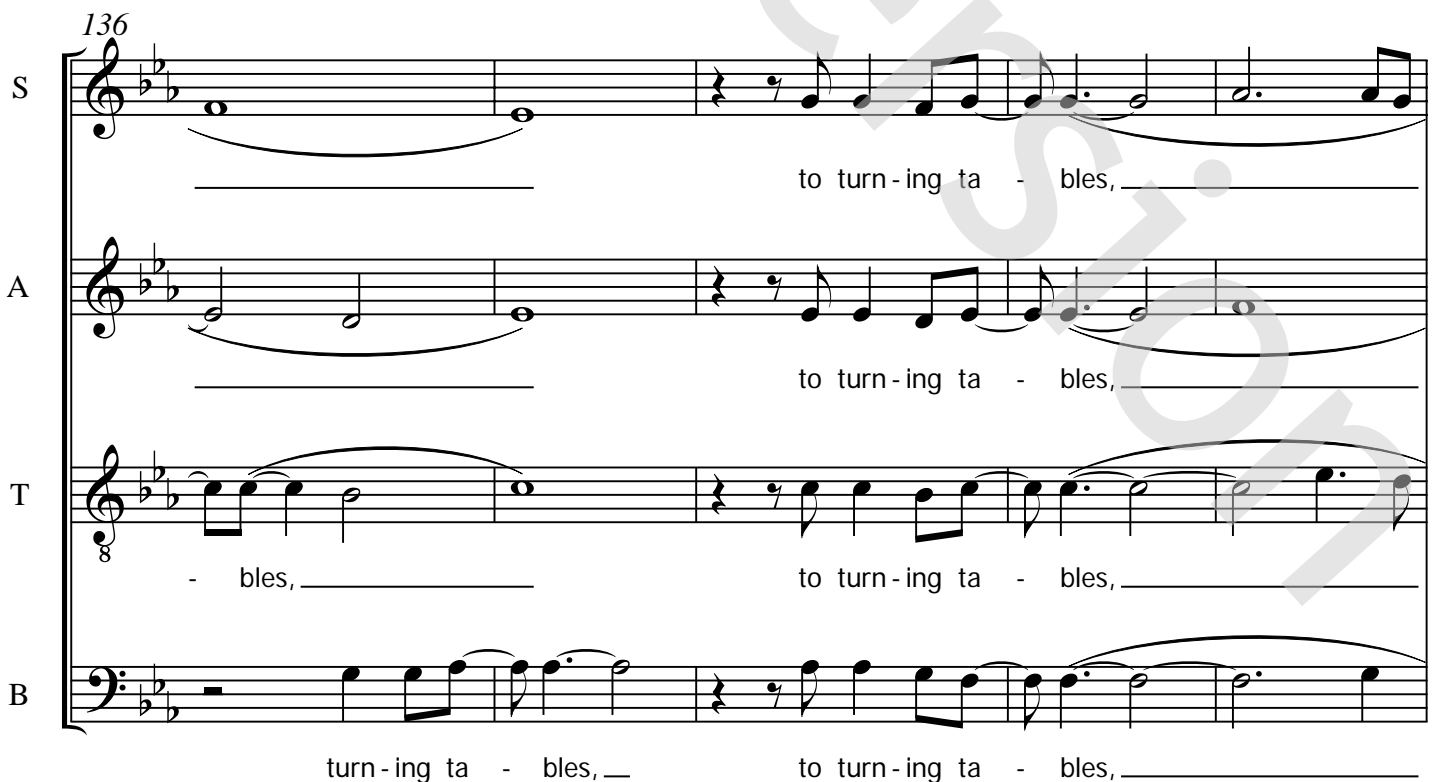
136

S  
\_\_\_\_\_ to turn - ing ta - bles, \_\_\_\_\_

A  
\_\_\_\_\_ to turn - ing ta - bles, \_\_\_\_\_

T  
8  
- bles, \_\_\_\_\_ to turn - ing ta - bles, \_\_\_\_\_

B  
turn - ing ta - bles, \_\_\_\_\_ to turn - ing ta - bles, \_\_\_\_\_





08 C Instrument

# Turning Tables

- Adele -

Words and Music by Adele Adkins, Ryan Tedder  
Arranged by Don Henken  
Original Key

Not too slow  $\text{♩} = 76$

### Intro

### Verse 1

### Verse 2

### Interlude 1

Musical notation for the Intro and Verse 1. The Intro consists of two measures of whole notes in 3/2 time. Verse 1 consists of two measures of whole notes in 3/2 time. Above the staff, the number '8' is written above each measure, indicating the number of eighth notes per measure.

### *mp* Chorus 1

Musical notation for Chorus 1, starting at measure 27. It features a melodic line with a *cresc.* (crescendo) marking. The time signature changes from 3/2 to 3/4 at measure 28 and back to 3/2 at measure 29. The dynamic is marked *mf*.

Musical notation for the continuation of Chorus 1, starting at measure 35. The time signature changes to 5/4 at measure 36 and back to 3/2 at measure 37.

Musical notation for the continuation of Chorus 1, starting at measure 42. It includes a triplet of eighth notes in measure 43. The dynamic is marked *mp*.

### *mp* Verse 3

Musical notation for Verse 3, starting at measure 49. It consists of a melodic line with a *mf* dynamic.

### Verse 4

Musical notation for Verse 4, starting at measure 57. It consists of a melodic line.

Musical notation for the continuation of Verse 4, starting at measure 65. It features a melodic line with a *mf* dynamic.

### Interlude 2

Musical notation for Interlude 2, starting at measure 72. It consists of a melodic line with a *mf* dynamic.

### Chorus 2

Musical notation for Chorus 2, starting at measure 80. It features a melodic line with a *mf* dynamic.

© www.ChorusOnline.com / 0031 (0) 6 - 41 57 77 56



09 Bb Instrument

# Turning Tables

- Adele -

Words and Music by Adele Adkins, Ryan Tedder  
Arranged by Don Henken  
Original Key

Not too slow  $\text{♩} = 76$

Intro

Verse 1

Verse 2

Interlude 1

8 8 4 4

*mp*

Chorus 1

28 *cresc.*

*mf*

36

43

*mp*

Verse 3

51

Verse 4

59

Interlude 2

67

Chorus 2

75

83



10 Eb Instrument

# Turning Tables

- Adele -

Words and Music by Adele Adkins, Ryan Tedder  
Arranged by Don Henken  
Original Key

Not too slow  $\text{♩} = 76$

Intro

Verse 1

Verse 2

Interlude 1

*mp*

Chorus 1

*mf*

*mp*

Verse 3

Verse 4

Interlude 2

Chorus 2



11 Piano Advanced

# Turning Tables

- Adele -

Not too slow  $\text{♩} = 76$

Words and Music by Adele Adkins, Ryan Tedder

Arranged by Don Henken

Original Key

## Intro

$C_{m7}$

$A^{\flat}_{maj9}$

$F_{m9}$

$A^{\flat}$

5

## Verse 1

$C_{m7}$

$A^{\flat}_{maj9}$

9

$F_{m9}$

$A^{\flat}$

13

## Verse 2

$C_{m7}$

$A^{\flat}_{maj9}$

17

© www.ChorusOnline.com / 0031 (0) 6 - 41 57 77 56



12 Piano Moderated

# Turning Tables

- Adele -

Words and Music by Adele Adkins, Ryan Tedder  
Arranged by Don Henken  
Original Key

Not too slow  $\text{♩} = 76$

## Intro

$C_{m7}$

$A^{\flat}_{maj9}$

$F_{m9}$

$A^{\flat}$

5

## Verse 1

$C_{m7}$

$A^{\flat}_{maj9}$

9

$F_{m9}$

$A^{\flat}$

13

© www.ChorusOnline.com / 0031 (0) 6 - 41 57 77 56



13 Synthesizer

# Turning Tables

- Adele -

Words and Music by Adele Adkins, Ryan Tedder  
Arranged by Don Henken  
Original Key

Not too slow  $\text{♩} = 76$

Intro

Verse 1

Verse 2

Strings 8

Interlude 1

23

Chorus 1

31

38

© www.ChorusOnline.com / 0031 (0) 6 - 41 57 77 56





# Turning Tables

- Adele -

Words and Music by Adele Adkins, Ryan Tedder  
Arranged by Don Henken  
Original Key

Not too slow ♩ = 76

### Intro

C<sub>m7</sub>                                  A<sup>b</sup><sub>maj9</sub>                                  F<sub>m9</sub>

### Verse 1

7                                  A<sup>b</sup>                                  C<sub>m7</sub>                                  A<sup>b</sup><sub>maj9</sub>

Close e-nough \_\_\_ to start a war. \_\_\_

### Verse 2

12                                  F<sub>m9</sub>                                  A<sup>b</sup>                                  C<sub>m7</sub>

All that I \_\_\_ have is on the floor. \_\_\_ God on-ly knows

18                                  A<sup>b</sup><sub>maj9</sub>                                  F<sub>m9</sub>                                  A<sup>b</sup>

\_\_\_ what we're fight-ing for. All that I \_\_\_ say, you al-ways say \_\_\_ more. \_\_\_

### Interlude 1

25                                  A<sup>b</sup>                                  F<sub>m7</sub>                                  A<sup>b</sup>                                  A<sup>b</sup>(add2)

I can't keep \_\_\_ up with your turn-ing \_\_\_ ta- bles. Un-der your thumb I \_\_\_ can't

### Chorus 1

31                                  B<sup>b</sup>                                  C<sub>m7</sub>                                  A<sup>b</sup><sub>maj7</sub>                                  E<sup>b</sup>

breathe. So I won't let you \_\_\_ close e-nough to hurt

© www.ChorusOnline.com / 0031 (0) 6 - 41 57 77 56



15 Empty Paper

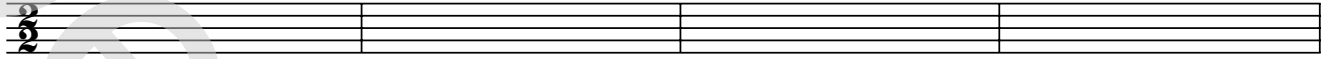
# Turning Tables

- Adele -

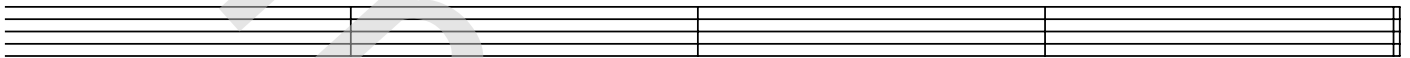
Not too slow  $\text{♩} = 76$

*Words and Music by Adele Adkins, Ryan Tedder  
Arranged by Don Henken  
Original Key*

## Intro

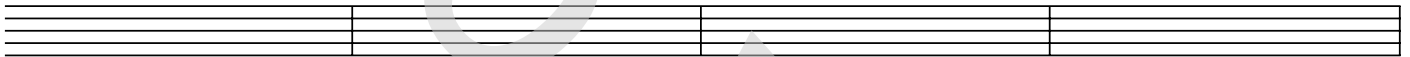


5

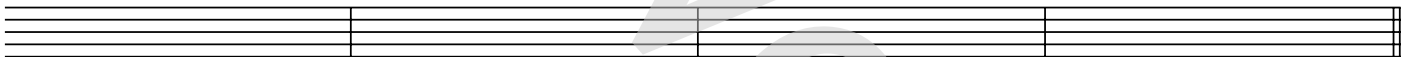


## Verse 1

9

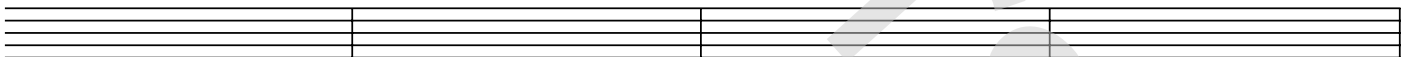


13

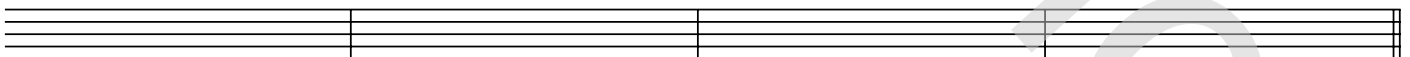


## Verse 2

17

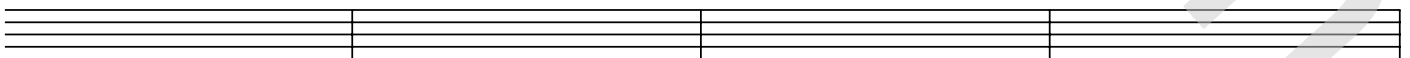


21



## Interlude 1

25



29



© www.ChorusOnline.com / 0031 (0) 6 - 41 57 77 56





16 Lyrics

# Turning Tables

- Adele -

*Words and Music by Adele Adkins, Ryan Tedder  
Arranged by Don Henken  
Original Key*

Intro

Verse 1

Close enough to start a war  
All that I have is on the floor

Verse 2

God only knows what we're fighting for  
All that I say, you always say more

Interlude 1

I can't keep up with your turning tables  
Under your thumb, I can't breathe

Chorus 1

So I won't let you close enough to hurt me  
No, I won't ask you, you to just desert me  
I can't give you the heart you think you gave me  
It's time to say goodbye to turning tables, to turning tables

Verse 3

Under haunted skies I see you ooh  
Where love is lost, your ghost was found

Verse 4

I braved a hundred storms to leave you  
As hard as you try, no, I will never be knocked down

Interlude 2

Chorus 2

Bridge

Next time I'll be braver, I'll be my own savior  
When the thunder calls for me  
Next time I'll be braver, I'll be my own savior  
Standing on my own two feet

Chorus 3

Turning tables

Yeah, yeah, yeah, ooh, ooh, ooh